

Appendix D

Phase 1 Environmental Site Assessment

City of Mississauga

Phase I Environmental Site Assessment Second Line West, Mississauga, ON

Prepared by:

AECOM

105 Commerce Valley Drive West, Floor 7
Markham, ON, Canada L3T 7W3
www.aecom.com

905 886 7022 tel
905 886 9494 fax

Project Number:

60319049

Date:

July, 2014

Statement of Qualifications and Limitations

The attached Report (the "Report") has been prepared by AECOM Canada Ltd. ("Consultant") for the benefit of the City of Mississauga ("Client") in accordance with the agreement between Consultant and Client, including the scope of work detailed therein (the "Agreement").

The information, data, recommendations and conclusions contained in the Report (collectively, the "Information"):

- is subject to the scope, schedule, and other constraints and limitations in the Agreement and the qualifications contained in the Report (the "Limitations");
- represents Consultant's professional judgement in light of the Limitations and industry standards for the preparation of similar reports;
- may be based on information provided to Consultant which has not been independently verified;
- has not been updated since the date of issuance of the Report and its accuracy is limited to the time period and circumstances in which it was collected, processed, made or issued;
- must be read as a whole and sections thereof should not be read out of such context;
- was prepared for the specific purposes described in the Report and the Agreement; and
- in the case of subsurface, environmental or geotechnical conditions, may be based on limited testing and on the assumption that such conditions are uniform and not variable either geographically or over time.

Consultant shall be entitled to rely upon the accuracy and completeness of information that was provided to it and has no obligation to update such information. Consultant accepts no responsibility for any events or circumstances that may have occurred since the date on which the Report was prepared and, in the case of subsurface, environmental or geotechnical conditions, is not responsible for any variability in such conditions, geographically or over time.

Consultant agrees that the Report represents its professional judgement as described above and that the Information has been prepared for the specific purpose and use described in the Report and the Agreement, but Consultant makes no other representations, or any guarantees or warranties whatsoever, whether express or implied, with respect to the Report, the Information or any part thereof.

Without in any way limiting the generality of the foregoing, any estimates or opinions regarding probable construction costs or construction schedule provided by Consultant represent Consultant's professional judgement in light of its experience and the knowledge and information available to it at the time of preparation. Since Consultant has no control over market or economic conditions, prices for construction labour, equipment or materials or bidding procedures, Consultant, its directors, officers and employees are not able to, nor do they, make any representations, warranties or guarantees whatsoever, whether express or implied, with respect to such estimates or opinions, or their variance from actual construction costs or schedules, and accept no responsibility for any loss or damage arising therefrom or in any way related thereto. Persons relying on such estimates or opinions do so at their own risk.

Except (1) as agreed to in writing by Consultant and Client; (2) as required by-law; or (3) to the extent used by governmental reviewing agencies for the purpose of obtaining permits or approvals, the Report and the Information may be used and relied upon only by Client.

Consultant accepts no responsibility, and denies any liability whatsoever, to parties other than Client who may obtain access to the Report or the Information for any injury, loss or damage suffered by such parties arising from their use of, reliance upon, or decisions or actions based on the Report or any of the Information ("improper use of the Report"), except to the extent those parties have obtained the prior written consent of Consultant to use and rely upon the Report and the Information. Any injury, loss or damages arising from improper use of the Report shall be borne by the party making such use.

This Statement of Qualifications and Limitations is attached to and forms part of the Report and any use of the Report is subject to the terms hereof.

July 22, 2014

Mr. Farhad Shahla
Project Manager
City of Mississauga
201 City Centre Drive, Suite 800
Mississauga, ON L5B 2T4

Dear Mr. Shahla:

Project No: 60319049
Regarding: Phase I Environmental Site Assessment
Second Line West, Mississauga, ON

AECOM is pleased to provide you with this Phase I Environmental Site Assessment (ESA) for a portion of Second Line West, Mississauga, ON.

If you should have any comments or questions, please contact me at 905-747-7648.

Sincerely,
AECOM Canada Ltd.

Peter Hicks, P.Eng., B.A., QP_{ESA}
Senior Environmental Engineer
Peter.Hicks2@aecom.com

PH:mm
Encl. Phase I Environmental Site Assessment, Second Line West, Mississauga, ON

Distribution List

# of Hard Copies	PDF Required	Association / Company Name
0	Yes	City of Mississauga
0	Yes	AECOM Canada Limited

AECOM Signatures

Report Prepared By:

Hemant Agnani, B.Sc. (H), M.Sc.
Environmental Scientist
Environment

**Report Reviewed and
Approved By:**

Peter Hicks, P.Eng., B.A., QP_{ESA}
Senior Environmental Engineer
Environment

Executive Summary

AECOM Canada Limited (AECOM) conducted a Phase I Environmental Site Assessment (Phase I ESA) for a portion of the Second Line West road right-of-way (ROW), Mississauga Toronto, ON (herein referred to as the “Site”). A general location map is provided as **Figure 1**. The Phase I ESA was conducted on behalf of the City of Mississauga as part of a Class Environmental Assessment (Class EA) for the proposed improvements along the Second Line West road and widening of Highway 401. The objective of the Phase I ESA was to identify any areas of actual or potential environmental concern that may have resulted from past or current operations on the Site and/or neighbouring properties.

A Site plan is included as **Figure 2** and selected photographs of the Site are included in **Appendix A**.

The Phase I ESA has been conducted in general accordance with the Canadian Standard Association (CSA) Z768-01 Phase I Environmental Site Assessment (November 2001, updated April 2003) protocol.

Background

The Second Line West vehicular crossing of Highway 401 is being removed to accommodate the widening of Highway 401. The need for the removal of the bridge was documented by the Ontario Ministry of Transportation in a Transportation Environmental Study Report (TESR, 2012) for the ultimate widening of Highway 401 from the Highway 403/410 interchange to the Credit River, with environmental approval in 2007. In 2010, the City of Mississauga’s Cycling Master Plan identified a plan for a pedestrian/cyclist connection for Second Line West across Highway 401. In response, the City of Mississauga initiated a Class EA Study, including preliminary design, to pursue recommendations for a north-south pedestrian/cyclist connection across Highway 401 at Second Line West, upon removal of the existing bridge.

The Site is comprised of an approximately 800 meter (m) long and 12 m wide portion of the Second Line West road ROW from south of Sombrero Way (north of Highway 401) to the Donway Drive (south of Highway 401), which includes the Second Line West underpass structure on Highway 401 between Mavis Road to the east and Creditview Road to the west. Also present are portions of forests in the western portion (both south and north of Highway 401) and vacant grassed areas in the eastern portion of the Site. No buildings were observed at the Site. The Site is bisected by Highway 401 and located in the Greater Toronto Area (GTA) within the City of Mississauga in the Region of Peel and, as shown on **Figure 1**.

Second Line West is a lightly travelled local road that forms the road allowance between Concessions 2 & 3 west of Hurontario Street (WHS) in the City of Mississauga. The two-lane paved roadway with gravel shoulders has a posted speed limit of 50 km/h. Second Line West rises up from south of Highway 401 to carry the roadway over Highway 401 and follows a straight and rolling alignment as it slopes down to the crossing of Fletcher’s Creek north of Highway 401. A hydro line parallels the east side of the road. Second Line West forms a boundary between suburban development to the east and rural and recreational development in association with the Credit River and Fletcher’s Creek to the west. Residential areas are situated to the northeast and southeast of the Second Line West Underpass. A cell phone tower is located at the northeast corner of the underpass. Dense forest and bush along Fletcher’s Creek characterize the lands to the northwest and southwest. The forested area associated with Fletcher’s Creek has been identified as an Environmentally Significant Area. No other sensitive receptors (i.e., day care centres, schools, and hospitals) are adjacent to the Site. A concrete culvert located a short distance to the west of Second Line West carries Fletcher’s Creek under Highway 401. The creek joins the Credit River to the southwest of the underpass.

The Second Line underpass structure uses reinforced cast-in-place concrete for the major components of the bridge. The bridge consists of four spans with the two centre spans extending 64 ft. (19.51 m) over Highway 401 and the two end spans extending 42 ft (12.8 m) over the sloped embankment.

Based on the cultural heritage evaluation report (CHER) for the Second Line West Underpass (2012), the Second Line West Underpass is comprised of a four-span, concrete T-beam structure and was completed in 1958. The Second Line West Underpass was identified as Toronto Township Bridge #12 at the time of construction. Historically the Second Line West ROW related to the survey of the northern part of the Township of Toronto as the road allowance between Concessions 2 & 3 WHS. The road was made of gravel at the time of the construction of Highway 401 and it ran from the Base Line (Eglinton Avenue) north to the town line with Chinguacousy Township. The road formed part of the local road network and provided access to the community of Meadowvale.

No underground storage tanks (USTs) or aboveground storage tanks (ASTs) are known or reported to be located at the Site and none were observed during the Site visit. During AECOM's site visit, no visual evidence of water wells, monitoring wells, dry wells, clarifiers, or septic tanks or leach fields was observed on the Site. During AECOM's site visit, no visual evidence of discolored soil, water, or unusual vegetative conditions or odours was observed.

Conclusions

Based on the information gathered during the Phase I ESA conducted for the Site, this Phase I ESA conducted for the Site has revealed no evidence of contamination in connection with the Site.

Table of Contents

Statement of Qualifications and Limitations
 Letter of Transmittal • Distribution List
 Executive Summary

	page
1. Introduction	1
2. Scope and Methodology	1
2.1 Scope of Work	1
2.2 Methodology	2
2.2.1 Records Review	2
2.2.2 Site Visit	3
2.2.3 Interviews	3
3. Site Description	3
3.1 Property Description	3
3.2 On-site Buildings and Structures	4
3.3 Physical Setting	5
3.3.1 Surficial Geology	5
3.3.2 Topography and Regional Drainage	5
3.3.3 Surface Water Drainage	5
4. Previous Reports	5
5. Environmental Database/Records Review	8
5.1 Regulatory Information	8
5.2 Historical Land Use	10
6. Site Visit	11
6.1 Current Site Operations	11
6.2 Waste Generation	11
6.3 Air Emissions	11
6.4 Fuels, Chemicals and Waste Storage	11
6.5 Building Systems	12
6.6 Exterior Site Observations	12
6.7 Hazardous Materials	12
6.8 Neighbouring Properties	13
7. Conclusions	14

List of Tables

Table 1.	Summary of Records Reviewed	2
Table 2.	Summary of Site Information	4
Table 3.	Hazardous Materials Summary	12

List of Figures (end of report)

Figure 1.	Site Location
Figure 2.	Site Plan
Figure 3.	Topographic Map

Appendices

Appendix A.	Site Photographs
Appendix B.	Phase I ESA Information Request/Questionnaire
Appendix C.	Previous Environmental Reports
Appendix D.	Regulatory Records and Requests (MOE, Municipal, TSSA)
Appendix E.	Opta Environmental Services Records
Appendix F.	EcoLog ERIS Report
Appendix G.	Aerial Photos

1. Introduction

AECOM Canada Limited (AECOM) conducted a Phase I Environmental Site Assessment (Phase I ESA) of a portion of the Second Line West, Mississauga, ON herein referred to as the "Site". A general location map is provided as **Figure 1**. The Second Line West vehicular crossing (or underpass) of Highway 401 is being removed to accommodate the widening of Highway 401. In response, the City of Mississauga has initiated a Class Environmental Assessment (Class EA) Study 'Schedule C', including preliminary design, to pursue recommendations for a north-south pedestrian/cyclist connection across Highway 401 at Second Line West, upon removal of the existing bridge.

The Phase I ESA was conducted for the City of Mississauga as part of the Class EA Study for the proposed improvements along the Second Line West road. The objective of the Phase I ESA was to identify any areas of actual or potential environmental concern that may have resulted from past or current operations on the Site and/or neighbouring properties.

A Site plan is included as **Figure 2** and selected photographs of the Site are included in **Appendix A**.

2. Scope and Methodology

2.1 Scope of Work

The Phase I ESA carried out by AECOM was conducted in general accordance with the Canadian Standards Association's Phase I Environmental Site Assessment Standard Z768-01 (CSA standard), and consisted of the following work tasks:

- Records review including, but not limited to aerial photographs and geological and topographic maps;
- Request to EcoLog ERIS (ERIS) for any fire insurance records for the site;
- Request to the Technical Standards and Safety Authority (TSSA) for any records of the site;
- Review of available environmental databases and records, including an EcoLog ERIS search report;
- Review of previous environmental reports;
- Interviews with persons associated with the Site;
- A site visit; and,
- Evaluation of information and preparation of the report provided herein.

A Phase I ESA does not include sampling or testing of air, soil, groundwater, surface water or building materials. The assessment of the Site for the potential presence of hazardous building materials was based on the age of the building and its components, and a non-intrusive visual review of the Site. For this Phase I ESA, no enhancements to the CSA standard were made. A Phase I ESA does not constitute a hazardous materials survey or Designated Substances Survey. This assessment did not include a review or audit of operational environmental compliance issues at the Site.

The preparation of this Phase I ESA report was supervised by a Qualified Person as defined in the Ontario Regulation 153/04 Records of Site Condition – Part XV.1 of the Environmental Protection Act (October 1, 2004, amended October 31, 2011).

2.2 Methodology

2.2.1 Records Review

The applicable search distance for the records review included the Site, properties immediately adjacent to the Site and other neighbouring properties within 250 metres (m) from the Site. Information sources obtained and reviewed as part of the records review are listed in Table 1:

Table 1. Summary of Records Reviewed

Source	Information/Contact
Aerial Photographs	1946, 1960, 1970, 1980, 1988 [EcoLog Environmental Risk Information Service (ERIS) - Order 20140618033, June 26, 2014]. Additional imageries from the years 2003, 2004, 2005, 2006, 2007, 2009 and 2013 were also viewed (Google Earth Pro)
City Directories	City directories were not ordered as the property is comprised of a vehicular bridge and a road right-of-way (ROW) with no municipal address. Due to the nature of the properties adjacent to the Site (forest lands, vacant grassed plots and residential areas), no City directories records were ordered.
Fire Insurance Plans (FIPs)	A search for relevant Fire Insurance Plans did not reveal any records due to the nature of the property (Road ROW).
Insurance Inspection Reports and Plans (ERIS)	A search for relevant Fire Insurance Plans, Inspection Reports or Site Plans was initiated for the Site did not reveal any records.
Technical Standards and Safety Authority (TSSA)	No TSSA records were available for the Site.
Environmental Databases	EcoLog Environmental Risk Information Service (ERIS) Custom-Build Your Own Report - 20140618033 (EcoLog ERIS, June 24, 2014)
Topographic Maps	National Resources Canada, the Atlas of Canada – Topographic Maps (http://atlas.gc.ca/site/english/toporama/), Scale 1:15,000
Geological and Soil Maps	Ministry of Natural Resources <i>Geological Highway Map: Southern Sheet</i> . Scale 1:800,000. Map number 2441 Ministry of Natural Resources <i>Quaternary Geology of Ontario (Southern Sheet)</i> . Scale 1:100,000. Map number 2556
Site Records/Previous Reports	<ul style="list-style-type: none"> Phase I Environmental Site Assessment, highway 401 Expansion: Highway 401/403 Interchange to Credit river, Region of Peel, Ontario, July 2003, prepared by Marshall Macklin Monaghan (MMM) for the MTO (referred to as “2003 Phase I ESA Report”). Transportation Environmental Study Report (TESR), Highway 401 Improvements from Highway 401/403 Interchange to the East of the Credit River, August 2005, prepared by MMM for the MTO (referred to as “2005 TESR”). Contamination Overview Study Hwy 401 Widening From Hwy 401/403 Interchange to the Credit River, Mississauga, October 2012, prepared by Golder Associates for AECOM. Cultural Heritage Evaluation Report, Second Line West Underpass (Toronto Township Bridge # 12), MTO site No. 24-130, Highway 401, October 2012, prepared by Unterman McPhail Associates for AECOM (referred to as “2012 CHER”). Groundwater Assessment, Highway 401 from Highway 403/410 Interchange to the credit river – GWP 2150-01-00, January 2014, prepared by Golder Associates for AECOM (referred to as “2014 GWA”). A sketch (scale of 1:2,500) showing ownership details of the Second line west underpass/structure and the ROW (dated July 9, 2014) provided by the City of Mississauga’s Transportation and Works Department
Existing Title Search	None provided

In addition, available public environmental databases and records were searched to determine if the site, adjacent or neighbouring properties are listed. The databases and search results are presented in Section 5.0.

2.2.2 Site Visit

The Phase I ESA Site visit was conducted by Mr. Hemant Agnani of AECOM on July 4, 2014. The Site visit methodology consisted of traversing the road ROW, and walking portions of the surrounding area. The Site and readily visible and publicly accessible portions of adjoining and neighbouring properties were examined for the presence of areas of potential environmental concern (APECs). AECOM was not accompanied by a Site representative during the Site visit.

2.2.3 Interviews

AECOM conducted an interview with the Site representative, Mr. Farhad Shahla (Transportation Project Engineer, Transportation Infrastructure Management, City of Mississauga), through a questionnaire (**Appendix B**) sent to him in an e-mail dated July 3, 2014. The questionnaire was used by AECOM for collecting information pertaining to current and past Site conditions and operations. Mr. Shahla indicated that the City's Environmental Services Department was consulted and records on file with the City were searched to collect information requested for in AECOM's questionnaire. Mr. Shahla has been associated with the Site for the last two years and has a good understanding of Site history and operations. AECOM's interview with Mr. Shahla focussed on the past and current land uses of the Site and surrounding properties in an effort to identify areas of potential environmental concerns (APECs) for the Site.

A sketch (scale of 1:2,500) showing ownership details of the Second Line West underpass/structure and the ROW (dated July 9, 2014), was provided by Mr. Shahla. The sketch indicated that the portion of land on which the Second Line underpass exists was originally a road allowance owned by the Town of Mississauga and was later designated as a controlled access highway on May 30, 1958 and currently belongs to the Department/Minister of Highways. The lands for the underpass structure were expropriated from two adjacent properties owned by Ernest Graydon and James Dandy Stern on Feb 10, 1956. The Second Line road ROW north and south of Highway 401 was owned by the City of Mississauga since the creation of the Township of Toronto. A portion of the Second Line West ROW located north of Highway 401 was acquired by the Town of Mississauga from Barvin Investments Limited on May 21, 1969 and widened on June 16, 1969. Another portion of the Second Line West ROW located north of Highway 401 was acquired by the Town of Mississauga from Willard Alonzo Wright & Mary Eliza on June 4, 1965 and widened on June 4, 1965.

The response from the City did not indicate any APECs for the Site.

3. Site Description

3.1 Property Description

The Site is located in the Greater Toronto Area (GTA) within the City of Mississauga in the Region of Peel. The Site is bisected by Highway 401 and located north and south of Highway 401 in Mississauga, ON, as shown on **Figure 1**. The Site is roughly rectangular-shaped and comprised of a 800 meter (m) long and 12 m wide portion of the Second Line West road ROW from south of Sombrero Way (north of Highway 401) to the Donway Drive (south of Highway 401), which includes the Second Line West Underpass structure on Highway 401 between Mavis Road to the east and Creditview Road to the west. Also present are portions of forests in the western portion (both south and north of Highway 401) and vacant areas in the eastern portion of the Site. No buildings were observed at the Site. The Second Line West road was opened in 1958.

For the purposes of this study, Second Line West is considered to run north to south in the vicinity of Highway 401. Second Line West is a lightly travelled local road that forms the road allowance between Concessions 2 & 3 west of Hurontario Street (WHS) in the City of Mississauga. The two-lane paved roadway with gravel shoulders has a posted speed limit of 50 km/h and is a signed bicycle route. Second Line West rises up in a conspicuous “humpback” shape to carry the roadway over Highway 401 and follows a straight and rolling alignment as it slopes down to the crossing of Fletcher’s Creek to the north of Highway 401. A hydro line parallels the east side of the road. Second Line West forms a boundary between suburban development to the east and rural and recreational development in association with the Credit River and Fletcher’s Creek to the west. Contemporary residential subdivisions are situated to the northeast and southeast of the Second Line West Underpass. A cell phone tower is located at the northeast corner of the bridge. Dense bush along Fletcher’s Creek characterizes the land to the northwest and southwest. A concrete culvert a short distance to the west of Second Line West carries Fletcher’s Creek under Highway 401. The creek joins the Credit River to the southwest of the underpass.

During AECOM’s site visit, no visual evidence of water wells, monitoring wells, dry wells, clarifiers, or septic tanks or leach fields was observed on the Site. During AECOM’s site visit, no visual evidence of discolored soil, water, or unusual vegetative conditions or odours was observed.

A summary of the Site information is presented on the following page:

Table 2. Summary of Site Information

Source	Information/Contact
Current Site Owner	Ontario Ministry of Transportation (the Second Line underpass structure) and City of Mississauga (Second Line ROW excluding the underpass)
Legal Description	The Site is located in a larger area identified as Lot 8, Concession 2 & 3 West of Hurontario Street (WHS), Geographic Township of Toronto, City of Mississauga
Property Area	Approximately 17,000 m ²
Utility Providers	Electricity – Ontario Hydro

3.2 On-site Buildings and Structures

The Site is developed with a road ROW (Second Line West) and no buildings or structures (except the second line bridge/ROW crossing over Highway 401 and a cell phone tower) in the north-south direction were observed on the Site at the time of the site visit. The Second Line underpass structure uses reinforced cast-in-place concrete for the major components of the bridge including abutments, wingwalls, piers, beams and deck. The bridge consists of four spans with the two centre spans extending 64 ft. (19.51 m) over Highway 401 and the two end spans extending 42-ft (12.8 m) over the sloped embankment. One overhead pole-mounted transformer associated with the hydro line (which parallels the east side of the road) was observed approximately 400 m north of Highway 401/the vehicular structure. No evidence of damage or leaks was observed near this equipment during the Site inspection.

No underground storage tanks (USTs) or aboveground storage tanks (ASTs) are known or reported to be located at the Site and none were observed during the Site visit.

3.3 Physical Setting

3.3.1 Surficial Geology

The Site is located in the City of Mississauga and the surficial geology consists of predominately Halton Till or silt to silty clay. The bedrock consists of shale, limestone, dolostone and siltstone. [Source: Ministry of Natural Resources *Quaternary Geology of Ontario (Southern Sheet)*. Scale 1:100,000. Map number 2556].

Based on the three (3) Borehole records for the boreholes (created for geotechnical investigation in 1957) identified for the Site, the soil stratigraphy (starting from top) includes top soil (0 m) followed by brown clay till (0.2 m) and grey clay till (4.7 m).

Based on the Groundwater Assessment Report (Golder, 2014) prepared for the study area comprised of the area within 250 m buffer centred on Highway 401 and including the Second Line West structure, the study area was reported to be comprised of predominately Till deposits, described as gritty to clayey silt till associated with the Halton Till unit. The geology in the Credit River Valley lands is characterized by fluvial deposits of clay, silt, sand and gravel and deltaic and lacustrine deposits of gravel to gravelly sand. The Groundwater Assessment Report is referred to in Section 4 of this report.

A site-specific investigation would be required in order to obtain detailed permeability information.

3.3.2 Topography and Regional Drainage

The topography of the Site is rolling within and around the road ROW. The Site is located at an elevation ranging from approximately 170 to 177 metres above sea level (mASL) [Source: National Resources Canada, the Atlas of Canada – Topographic Maps, Scale 1:30,000].

Fletcher's Creek enters the Site from its northwestern portion and flows in a southern direction towards Credit River (a portion of which is located 900 m west of the Site). Credit River flows in a southeastern direction towards Lake Ontario. Based on the topographic contours observed on the Atlas of Canada, the inferred regional groundwater flow is south to southwest, towards Lake Ontario; however, it may be influenced by sewers and buried utilities. The actual groundwater flow direction and depth in the vicinity of the Site cannot be determined without site-specific groundwater monitoring well data. **Figure 3** outlines the topographic details.

3.3.3 Surface Water Drainage

Surface water drainage on the Site is via overland flow and natural infiltration. Based on the terrain, surface water is likely to infiltrate into/drain towards Fletcher's Creek and Credit River which drains into Lake Ontario. No stormwater management ponds were located on or immediately adjacent to the Site.

4. Previous Reports

The following reports were available for AECOM's review:

- **Contamination Overview Study Highway 401 Widening from Hwy 401/403 Interchange to the Credit River, Mississauga, October 2012, prepared by Golder Associates for AECOM (referred to as “2012 COS”)**

Golder Associates was retained by AECOM on behalf of the Ministry of Transportation (MTO) to carry out a Contamination Overview Study (COS) of Highway 401 from Highway 410/403 interchange to the Credit River in the City of Mississauga. The study area for the COS also included the Second Line West structure over Highway 401.

The 2012 COS identified the following areas of potential environmental concerns (APECs) that may impact the proposed construction activities within the proposed Highway ROW limits:

1. Historical spills at five locations on the MTO property;
2. Presence of a fill pile of unknown source and quality located at the southwest corner of Highway 410/403/410 interchange;
3. Possible use of fill material at other locations within the proposed Highway ROW limits.

A subsurface investigation was recommended to assess the soil quality in the vicinity of the identified APECs. None of the APECs identified appear to be located in proximity to the Site and are unlikely to cause an impact on the Site.

- **Phase I Environmental Site Assessment, highway 401 Expansion: Highway 401/403 Interchange to Credit River, Region of Peel, Ontario, July 2003, prepared by Marshall Macklin Monaghan (MMM) for the MTO (referred to as “2003 Phase I ESA Report”)**

MMM was retained by the MTO to complete this study on the 7.7 Km long Highway 401 ROW which included areas 120 m on either side from Highway 410/403 interchange to the east of the Credit river. The land usage adjacent to Highway 401 consisted of agricultural or rural land uses with the exception of commercial development near the end of the highway corridor. The study identified the following APECs within the proposed Highway ROW limits:

1. Historical spills at five locations on the MTO property which were likely to have caused adverse effects to soil and/or groundwater;
2. Possible lead paint was identified on the guard rails of the McLaughlin Road bridge;

A subsurface investigation was recommended to assess the soil and groundwater conditions associated with past spills along the Highway Corridor. None of the APECs identified appear to be located in proximity to the Site and are unlikely to cause an impact on the Site.

- **Transportation Environmental Study Report (TESR), Highway 401 Improvements from Highway 401/403 Interchange to the East of the Credit River, August 2005, prepared by MMM for the MTO (referred to as “2005 TESR”)**

MMM was retained by the MTO to complete this study on the 7.7 Km long Highway 401 ROW and 120 m on either side from Highway 410/403 interchange to the east of the Credit River. The 2003 Phase I ESA Report was included as Appendix C in this report. No additional APECs, other than the ones identified in the 2003 Phase I ESA Report, were identified during this study.

- **Groundwater Assessment, Highway 401 from Highway 403/410 Interchange to the Credit River – GWP 2150-01 00, January 2014, prepared by Golder Associates for AECOM (referred to as “2014 GWA”)**

Golder Associates was retained by AECOM to carry out a groundwater assessment (GWA) for the future upgrades to Highway 401 from Highway 410/403 interchange to the west of Credit River in the City of Mississauga. The study area considered for the GWA was comprised of the area within a 250 m buffer centred on Highway 401 and also included the Second Line West structure over Highway 401. The GWA presented a generalized interpretation of hydrogeological conditions. The study area was reported to be comprised of predominately Till deposits, described as gritty to clayey silt till associated with the Halton Till unit. The geology in the Credit River Valley lands is characterized by fluvial deposits of clay, silt, sand and gravel and deltaic and lacustrine deposits of gravel to gravelly sand. The report indicated existences of fourteen wells located within the Study Area. Two (2) wells were observed during the Site reconnaissance, of which one (1) was located on the east side of 2nd Line West. No well contamination or water quality/quantity issues were reported in the Study Area.

- **Cultural Heritage Evaluation Report, 2nd Line West Underpass (Toronto Township Bridge # 12), MTO Site No. 24-130, Highway 401, October 2012, prepared by Unterman McPhail Associates for AECOM (referred to as “2012 CHER”)**

As part of the detailed design AECOM retained Unterman McPhail Associates, Heritage Resource Management Consultants, to prepare a cultural heritage evaluation report (CHER) for the Second Line West Underpass, MTO Site No. 24-130 on Highway 401 on behalf of the Ministry of Transportation (MTO), Central Region.

The CHER study indicated that the section of Highway 401 between Highway 10 (Brampton) and Highway 25 (Milton) was officially opened on November 26, 1959 and the Second Line West Underpass comprising of a four-span, concrete T-beam structure was completed in 1958. The Second Line West Underpass was identified as Toronto Township Bridge #12 at the time of construction. Historically the Second Line West ROW related to the survey of the northern part of the Township of Toronto as the road allowance between Concessions 2 & 3 WHS. The road was made of gravel at the time of the construction of Highway 401 and it ran from the Base Line (Eglinton Avenue) north to the town line with Chinguacousy Township. The road formed part of the local road network and provided access to the community of Meadowvale. The CHER study indicated that the Second Line West Underpass underwent few modifications since it was opened in 1958. No information on rehabilitation projects at the bridge was provided. The bridge retained its original handrail system that contributed to its design character. The 2012 CHER concluded that the Second Line West Underpass did not meet the threshold of 60 points to be considered of provincial importance and eligible for inclusion on the Ontario Heritage Bridge List.

None of the APECs identified in the previous reports appear to be located in proximity to the Site and are unlikely to cause an impact on the Site.

The previous investigation reports are available in **Appendix C**.

5. Environmental Database/Records Review

5.1 Regulatory Information

Ontario Ministry of the Environment

A request to the MOE through the Freedom of Information and Privacy Protection office was not initiated due to the lack of municipal address and nature of the property (Road ROW) involved which would not have yielded relevant environmental records for the Site.

Municipal Records

A Municipal Freedom of Information and Protection to Privacy Act (MFOIPP) request to the City of Mississauga was not initiated due to the lack of municipal address and nature of the property (Road ROW) involved which would not have yielded relevant environmental records for the Site.

Technical Standards & Safety Authority

A request to the Technical Standards & Safety Authority (TSSA) was made for a search of their records regarding tank installations or fuelling facilities that are or were present on the Site. A reply from the TSSA (**Appendix D**) on July 7, 2014 indicated that no records were identified for the Site.

Inventory of PCB Storage Sites

A search of the Ontario Inventory of PCB Storage Sites, dated April 2006, indicates that the Site and the surrounding properties are not listed as a PCB storage facility.

Coal Gasification Plant Waste Sites

A search of the Inventory of Coal Gasification Plant Waste Sites in Ontario, dated April 1987, indicates that there were no Coal Gasification Plant Waste Sites within 1 km of the Site.

Waste Disposal Sites

The MOE maintains an inventory of known open (active or inactive) and closed disposal sites in the Province of Ontario as of 1991. "Class A" sites are those that are deemed to have the potential to impact human health because of the proximity to human development; "Class B" sites are those that are deemed to have the potential to impact environment. Information contained in the Ontario Waste Disposal Site Inventory, June 1991, indicated that there were no active or closed waste disposal sites within 1 km of the Site. No waste disposal sites within 250 m from the Site were identified in the ERIS report.

Ontario Ministry of the Environment Brownfields Environmental Site Registry

Under Ontario Regulation 153/04, a Record of Site Condition (RSC) is a legal document prepared by a property owner and Qualified Person that provides a summary of the environmental condition of a property following the completion of a Phase I ESA, Phase II ESA, site remediation or risk assessment. The Brownfields Environmental Site Registry (BESR) database provides information on RSCs that have been filed for properties in Ontario where

these activities have been completed and a RSC filed. RSCs for individual properties can be publicly searched on the BESR website.

A search of the Brownfields Environmental Site Registry for information on Record of Site Conditions (RSCs) filed with the Ministry of the Environment (MOE) indicated that no RSCs were filed for the Site or the adjacent properties.

Risk Management Services

AECOM initiated a search for Historical Environmental Information Reporting System (HEIRS) records from Opta Environmental Services (Opta) (subcontracted through an environmental database and information services company EcoLog); however, no records were available for the Site. Opta's response is included in **Appendix E**.

EcoLog ERIS Report

A Site-specific report ordered from EcoLog is included in **Appendix F**. EcoLog ERIS reports provide environmental and historical information compiled from government and private source records. The report includes a search of over fifty (50) databases for the Site and other properties within 0.25 km from the Site perimeter. Definitions for the databases can be found following the records within the EcoLog ERIS report in **Appendix F**.

The following records were available from the EcoLog ERIS report for the Site:

- One (1) Certificate of Approval (C of A) record dated August 8, 2009 was identified for 2096553 Ontario Inc. located at 6695 Second Line, Mississauga. The C of A record pertained to an approval for municipal and private sewage works and does not represent an APEC for the Site.
- Three (3) Boreholes (created for geotechnical investigation in 1957) were identified for the Site. The soil stratigraphy in one of the boreholes indicated in the records (starting from top) includes top soil (0 m) followed by brown clay till (0.2 m) and grey clay till (4.7 m).

The following records were available from the EcoLog ERIS report for the surrounding properties:

- Two (2) Boreholes identified for the surrounding properties were created or used for geotechnical/geological investigations. The boreholes were created in 1957 and the depths of the boreholes were 6.1 m and 6.4 m. The soil stratigraphy in one of the boreholes (starting from top) includes brown clay till (0 m) followed by grey clay till (wet and soft) (3 m) and dry and stiff grey sandy loam till (4.6 m).
- One (1) Ontario Spills record was identified for the surrounding property located at 6775 Early Settler Row. The spill record (2005) indicated a spill of diesel (1 L) from a leaking trailer and listed as having possible environmental impact to the soil. Given the quantity of spill, the distance/direction of this property from the Site (220 m northwest) and the surficial geology in the region, the diesel spill is unlikely to migrate to the Site and does not represent an APEC for the Site.
- Four (4) C of A records identified for the surrounding road ROWs (including Fielder Drive, Donway Drive, Cruz Avenue, Newcombe Drive and Seaver Road) pertained to municipal water and sewage. The CofAs were issued in 1995 and 1999 to Fieldgate Dev. and Construction Ltd.
- Seven (7) Water Well Information System (WWIS) records were identified for the surrounding properties indicating existence of water supply wells with well depths ranging from 2.7 m to 29.5 m and the static water levels ranged from 2.4 m to 7 m.

The EcoLog records for the Site or the surrounding properties do not present APECs for the Site.

5.2 Historical Land Use

Historical information for the Site and surrounding properties is based on AECOM's review and analysis of the following historical sources:

- EcoLog Environmental Risk Information Service (ERIS) Custom-Build Your Own Report - 20140618033 (EcoLog ERIS, June 24, 2014);
- A sketch showing ownership details of the Second line west underpass/structure and the ROW, dated July 9, 2014;
- Previous investigation reports; and
- Aerial Photographs for the years 1946, 1960, 1970, 1980, 1988 (ERIS, June 26, 2014) and current view (Google Earth Pro).

A City Directory Search was not completed due to the nature of the properties involved (road ROW, residential, vacant grassed lands and forests). AECOM initiated a search for Historical Environmental Information Reporting System (HEIRS) records through EcoLog ERIS; however, no information was available for the Site.

The ERIS report did not indicate any historical industrial or commercial operations at the Site.

A sketch (scale of 1:2,500) showing ownership details of the Second line west underpass/structure and the ROW (dated July 9, 2014), was provided by the Site representative, Mr. Shahla. The sketch indicated that the portion of land on which the Second Line underpass exists was originally a road allowance owned by the Town of Mississauga and was later designated as a controlled access highway on May 30, 1958 and currently belongs to the Department/Minister of Highways. The lands for the underpass structure were expropriated from two adjacent properties owned by Ernest Graydon and James Dandy Stern on Feb 10, 1956. The Second Line road ROW north and south of Highway 401 was owned by the City of Mississauga since the creation of the Township of Toronto. A portion of the Second Line West ROW located north of Highway 401 was acquired by the Town of Mississauga from Barvin Investments Limited on May 21, 1969 and widened on June 16, 1969. Another portion of the Second Line West ROW located north of Highway 401 was acquired by the Town of Mississauga from Willard Alonzo Wright & Mary Eliza on June 4, 1965 and widened on June 4, 1965.

The previous investigations conducted for Highway 401 included a small portion of the Second Line West ROW and underpass structure and did not indicate existence of the APECs in close proximity to the Site. The previous reports indicated that the section of Highway 401 between Highway 10 (Brampton) and Highway 25 (Milton) was officially opened on November 26, 1959 and the Second Line West Underpass comprising of a four-span, concrete T-beam structure was completed in 1958. The Second Line West Underpass was identified as Toronto Township Bridge #12 at the time of construction. Historically the Second Line West ROW related to the survey of the northern part of the Township of Toronto as the road allowance between Concessions 2 & 3 WHS. The road was made of gravel at the time of the construction of Highway 401 and it ran from the Base Line (Eglinton Avenue) north to the town line with Chinguacousy Township. The road formed part of the local road network and provided access to the community of Meadowvale.

Historical aerial photographs (**Appendix G**) from 1946 to 1960 depict the rural landscape in proximity of Second Line West shortly before the introduction of Highway 401 in the 1960s. No buildings are depicted in proximity to Second Line West although farmsteads are seen fronting on McLaughlin Road to the east and Creditview Road to the west. The Second Line West Underpass appears constructed over Highway 401 in 1960. The surrounding

properties comprised of forest lands (northwest and southwest of the Site) or appeared developed generally as agricultural farmland (northeast and southeast of the Site) until 2003. From 2003 until 2013 (Google Earth Pro imageries), the surrounding properties to the northeast and southeast were generally developed (with residential buildings) similarly as they appeared at the time of AECOM's site reconnaissance (2014).

6. Site Visit

The following is summary of observations made during the Site visit and information gathered from the records review.

6.1 Current Site Operations

The Site is currently comprised of a lightly travelled road with a vehicular structure crossing over Highway 401 and connecting the communities north and south of Highway 401. The Second Line West underpass structure is comprised of one northbound lane, one southbound lane, and concrete curb with handrail system.

No buildings were visible on the Site. A cell phone tower is located at the northeast corner of the bridge. No chemical/waste storage was observed at the Site. No surface utilities were observed (i.e., septic tanks, catch basins, sewer covers, natural gas signage, etc.).

The current land use on the Site does not represent an APEC to the Site.

6.2 Waste Generation

No solid or liquid waste or wastewater appeared to have been generated on the Site and none was observed during the Site visit.

6.3 Air Emissions

Vehicular emissions were the only sources of air emissions observed during the Site visit. No other sources of air emissions were identified on the Site during the site visit. No strong, pungent or noxious odours were noted during the Site visit.

6.4 Fuels, Chemicals and Waste Storage

No present or former aboveground storage tanks (ASTs) or underground storage tanks (USTs) were identified on the Site during the Site visit, interview or in the records review. In addition, no materials were observed to be stored on-site at the time of the Site visit and there were no signs of staining or spills as observed from the road ROW. The Site comprised of trees and vegetation on the shoulders of the road ROW. No stressed vegetation was observed in those areas during the Site visit.

6.5 Building Systems

There were no buildings and building systems (i.e., heating, cooling, hydraulics, etc.) on the Site.

The Site is developed with a road ROW (Second Line West) with the second line bridge/underpass crossing over Highway 401 and a cell phone tower) in the north-south direction were observed on the Site at the time of the site visit. The Second Line West underpass structure is comprised of one northbound lane, one southbound lane, and concrete curb with handrail system. One overhead pole-mounted transformer associated with the hydro line (which parallels the east side of the road) was observed approximately 400 m north of Highway 401/the underpass. No evidence of damage or leaks was observed near this equipment during the Site inspection.

No underground storage tanks (USTs) or aboveground storage tanks (ASTs) are known or reported to be located at the Site and none were observed during the Site visit. No surface utilities were observed (i.e., septic tanks, catch basins, sewer covers, natural gas signage, etc.).

6.6 Exterior Site Observations

No stained surficial materials, stressed vegetation, or lagoons were identified on the Site. No monitoring, drinking, or oil or gas water wells were observed on the site during the site visit.

6.7 Hazardous Materials

AECOM reviewed the Site for the potential presence of hazardous materials during the Site visit. These substances are regulated through federal or provincial regulations and may represent a health concern, and/or require proper handling, storage and disposal.

Table 3. Hazardous Materials Summary

Substance	Concern	Findings
Asbestos	<p>The inhalation of asbestos fibres can cause serious diseases of the lungs and other organs that may not appear until years after the exposure has occurred. The common use of asbestos-containing materials (ACMs) in construction generally ceased voluntarily in the mid-1970s; however, ACMs are known to be present in buildings constructed as late as 1986. Further, asbestos is still utilized in the manufacturing of some vinyl floor tile and cement products.</p> <p>Friable ACMs (breakable by hand) are a potential health concern as asbestos fibres can be easily exposed and become airborne. Further, non-friable ACMs can be considered friable if disturbed. However, if identified to be present, friable ACMs can remain in a building provided that they are in good condition or encapsulated and a management plan is implemented.</p>	<p>Given the age of the vehicular structure, presence of ACMs in the bridge ducts cannot be entirely excluded. It has been AECOM's experience that asbestos can only be thoroughly evaluated by sampling and laboratory analysis.</p>
Polychlorinated Biphenyls (PCBs)	<p>From the 1930s to the 1970s, PCBs were widely used as ingredients in a number of industrial materials, including sealing and caulking compounds, inks and paint additives. They were also used to make coolants and lubricants for certain kinds of electrical equipment, including transformers and capacitors. PCBs are an environmental concern as they do not readily degrade and have been identified to bio-accumulate. In Canada, the federal Environmental Contaminants Act (1976) prohibited the use of PCBs in heat transfer and electrical equipment installed after September 1, 1977, and in transformers and capacitors installed after July 1, 1980. In addition, the storage and disposal of PCB waste materials is regulated.</p>	<p>One overhead pole-mounted transformer associated with the hydro line (which parallels the east side of the road) was observed approximately 400 m north of Highway 401/the vehicular structure. The PCB content or date of installation/manufacture on the transformer could not be viewed from the road ROW during the Site visit. No evidence of damage or leaks was observed near this equipment during the Site inspection.</p>
Lead Based Paint	<p>In 1976, the lead content in interior paint was limited to 0.5% by weight under the federal Hazardous Products Act. Lead is also associated with plumbing</p>	<p>Paint was observed on the guard rails north and south of the vehicular structure along the</p>

Substance	Concern	Findings
	solder and old pipes as well as other lead-based products such as wall shielding (x-ray rooms). Lead occurs naturally in the environment and has many industrial uses. However, small amounts of lead, particularly lead dust, can be hazardous to human health, especially to young children.	Second Line ROW. The paint was observed to be in a flaking condition during the Site visit. It has been AECOM's experience that lead-based paint can only be evaluated by sampling and laboratory analysis. A lead-based paint survey was not conducted as part of this assessment.
Urea Formaldehyde Foam Insulation (UFFI)	During the 1970s, when concerns about energy efficiency led to efforts to improve home insulation in Canada, UFFI became an important insulation product for existing houses. Most installations occurred between 1977 and its ban in Canada in 1980 under the federal Hazardous Products Act. While small amounts of formaldehyde are harmless, it is an irritating and toxic gas in significant concentrations.	UFFI is unlikely to have been used for construction of the road ROW or the vehicular structure.
Ozone Depleting Substances (ODS)	In 1994, the federal government filed the Ozone-depleting Substances (ODS) Regulations to amend controls on production and consumption of chlorofluorocarbons (CFCs), halons, carbon tetrachloride and methyl chloroform.	No sources of refrigerant were observed during the Site visit.

No APECS were identified with respect to hazardous materials at the time of the Site visit.

6.8 Neighbouring Properties

For the purposes of this study, Second Line West is considered to run north to south in the vicinity of Highway 401. Second Line West is a lightly travelled local road that forms the road allowance between Concessions 2 & 3 west of Hurontario Street (WHS) in the City of Mississauga. The two-lane paved roadway with gravel shoulders has a posted speed limit of 50 km/h and is a signed bicycle route. It follows a straight and rolling alignment as it slopes down to the crossing of Fletcher's Creek to the north of Highway 401. A hydro line parallels the east side of the road. Fletcher's Creek enters the Site from its northwestern portion and flows in a southern direction towards Credit River (a portion of which is 900 m west of the Site). Credit River flows in a southeastern direction towards Lake Ontario. Second Line West forms a boundary between suburban development to the east and rural and recreational development in association with the Credit River and Fletcher's Creek to the west. Contemporary residential subdivisions are situated to the northeast and southeast of the Second Line West Underpass. A cell phone tower is located at the northeast corner of the bridge. Dense bush along Fletcher's Creek characterizes the land to the northwest and southwest. A concrete culvert a short distance to the west of Second Line West carries Fletcher's Creek under Highway 401. The creek joins the Credit River to the southwest of the underpass.

AECOM did not observe dry cleaners in the immediate vicinity (i.e., 250 m) of the subject property and none were identified in the database reports.

A forested area associated with Fletcher's Creek (Meadowvale Station woods) exists west of the Site and extends north and south of Highway 401 corridor west of the Mavis Road. This area has been identified as an Environmentally Significant Area. No other sensitive receptors (i.e., day care centres, schools, and hospitals) are adjacent to the Site.

Based on AECOM's Site reconnaissance of the surrounding neighbourhood, no off-site sources of concern were identified.

7. Conclusions

Based on the information gathered during the Phase I ESA conducted for the Site, this Phase I ESA has revealed no evidence of contamination in connection with the Site.

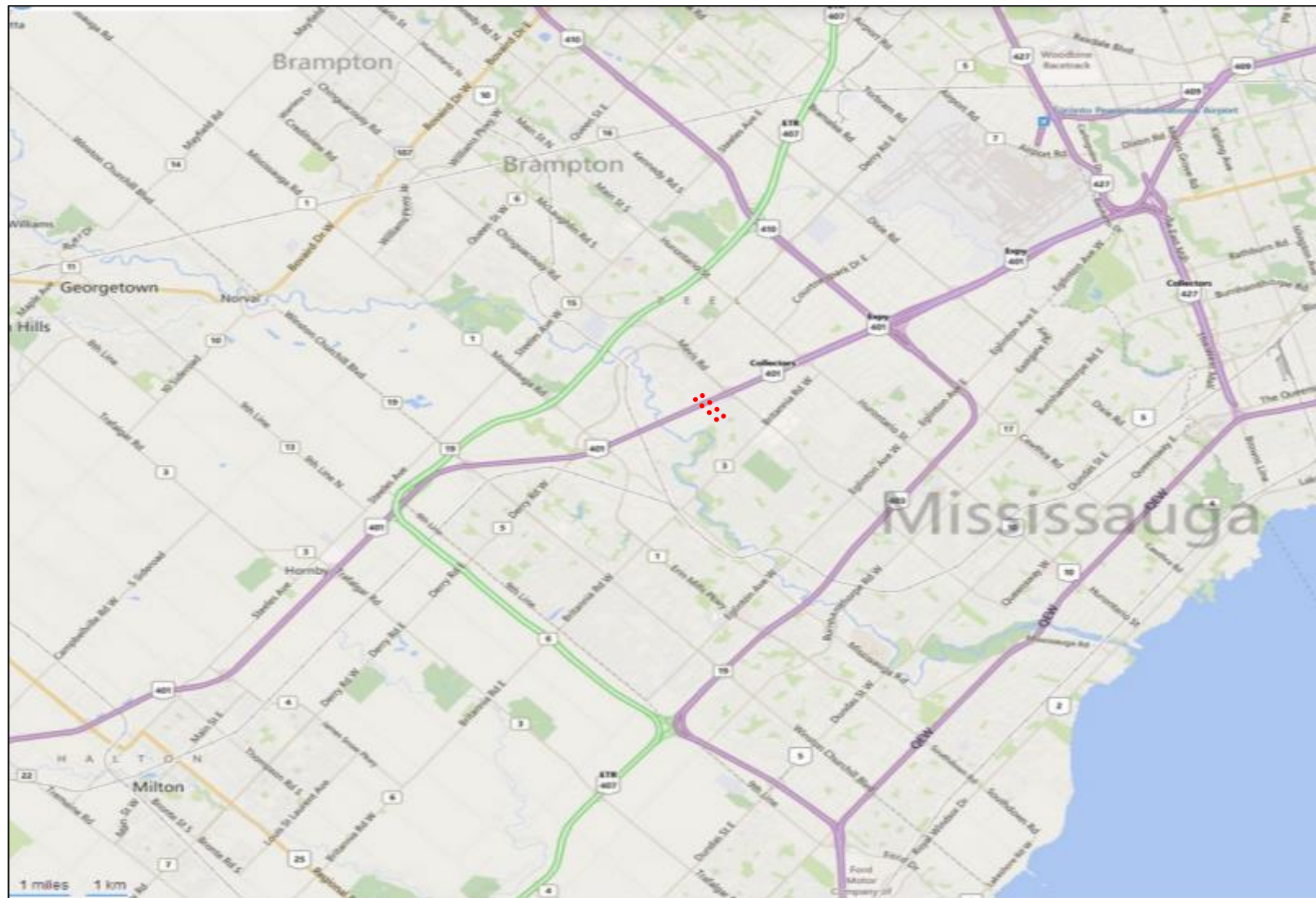
Given the age of the bridge, it may contain asbestos or lead based paint. AECOM recommends that a designated substances survey should be completed for the bridge prior to its demolition.

Figures

Figure 1: Site Location

Figure 2: Site Plan

Figure 3: Topographic Map




 Approximate Location of Property
Scale: As shown
Source: Google Maps

Figure 1
Site Location






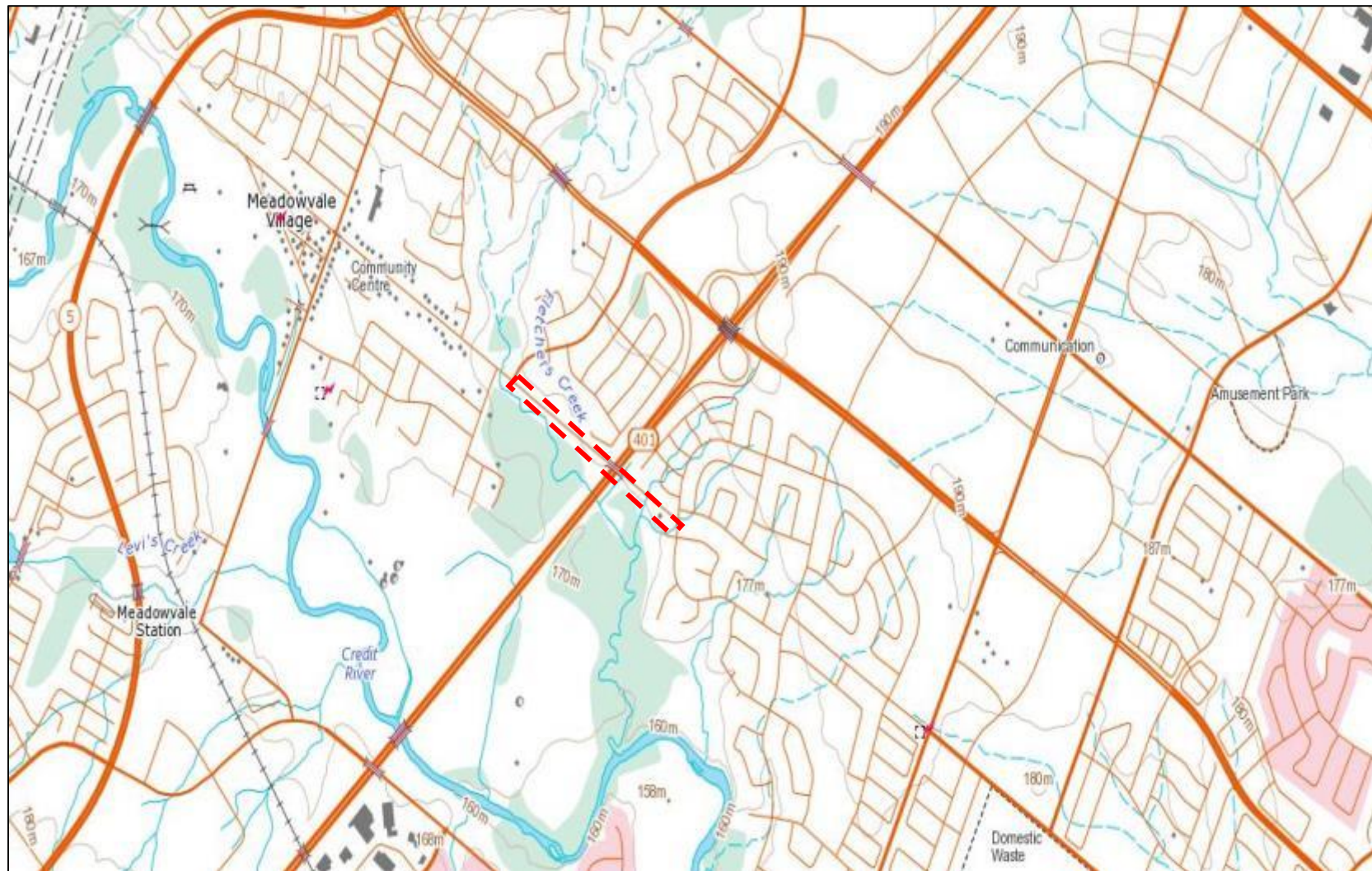
 Approximate boundaries of the Site
 Scale: As shown in the map.
 Source: Google Earth Pro

Figure 2
Site Plan





★ Approximate Location of Site
 Scale: 1:15,000
 Source: Atlas of Canada, NRCAN

Figure 3
Topographic Map



Appendix A

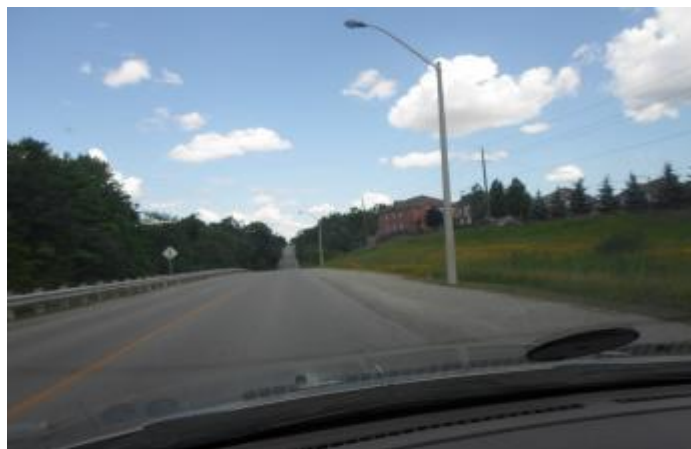
Site Photographs



Photograph 1 ↑
 View of the 2nd Line West Underpass structure, facing southwest



Photograph 2 ↑
 View of the 2nd Line Underpass Structure, facing north.



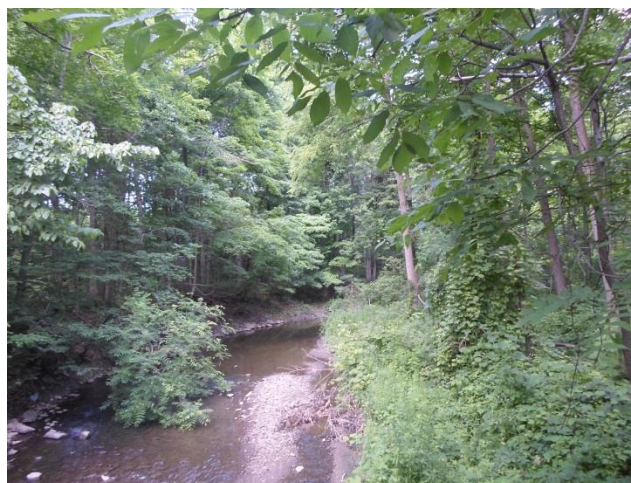
Photograph 3 ↑
 View of the 2nd Line Road Row north of the Underpass structure, facing north



Photograph 4 ↑
 View of the 2nd Line Road Row south of the Underpass structure, facing south



Photograph 5 ↑
 View of the forest located west of the Second Line ROW, north of Highway 401, facing west



Photograph 6 ↑
 View of Fletcher's Creek flowing inside the forest (north of Highway 401), facing north.



Photograph 7 ↑
 View of the pole-mounted transformer associated with the hydro line north of Highway 401 running parallel to the road ROW, facing east.



Photograph 8 ↑
 View of the forest located west of the Second Line ROW, south of Highway 401, facing west



Photograph 9 ↑
 View of the guardrail located south of the vehicular underpass east of the 2nd Line road ROW.



Photograph 10 ↑
 View of the residential area at the south end of the 2nd Line West road ROW, facing south



Photograph 11 ↑
 View of Highway 401 west of the 2nd Line Underpass structure, facing west



Photograph 12 ↑
 View of Highway 401 east of the 2nd Line Underpass structure and the residential area north of Highway 401, facing east

Appendix B

Phase I ESA Information Request/Questionnaire

Phase I ESA Questionnaire/Information Request

1. Site contact: Mr. Farhad Shahla ; Title: Transportation Project Engineer, Transportation Infrastructure Management; Length of employment and association with the subject property _____;
2. Municipal Site Address: None available
3. Legal Site Description: Situated on Lot 8 of Concessions 2 and 3 of the geographic Township of Toronto
4. Name and Type of Facility: Road Right of Way
5. Is the Property Leased or Owned? _____
6. Name of Property Owner(s): _____
7. Date and Length of Lease: _____
8. Date and Length of Ownership: _____
9. Present Land Use: Road Right of Way
10. How long has the property belonged to the MTO/ the City? Give details of previous property use, previous property owner(s) and date(s) of ownership:
 - _____
 - _____
11. Has the Site been associated with landfill/waste disposal and gravel pit operations? What portions of the Site were used for the landfill and pit operations? What were the capacities of the landfill and pit?
12. Are/Were any of the following utilities currently/formerly located on the property? Include Site plans to show locations of both former and current utilities.

Utility	No	Yes	Aboveground	Underground
• Electricity				
• Electrical Transformer(s) Present On-Site				
• Water				
• Natural Gas Pipeline				
• Fuel Oil Tank				
• Sewers				
• Telecommunications – Fibreoptic & Other				
• Oil/Gas Tank				
• Other (describe): _____				
13. Indicate the presence and/or known historical presence of any aboveground storage tanks (AST's) and/or underground storage tanks (UST's) on-site, type of tank(s) (i.e. steel, plastic), approximate size, contents, general condition of the tank(s), condition of the ground surface beneath the tank(s), evidence of spills and/or leaks and presence/absence of secondary containment:
 - _____

14. Has there been any instance when fill was brought to the site in order to alter site topography? (Describe source and type of fill brought to the site and fill location)
15. Has any on site dumping of chemicals/waste materials taken place? (Describe locations and history of materials dumped, including nature of materials)
16. Have any soil/groundwater samples been taken from the Site for environmental monitoring or to generate a baseline data? (Give dates, analytical laboratory used and results of any analyses. Attach reports for review, if available.)
17. Are regulatory authorities aware of any contamination at the Site? (Give details, including past or pending regulatory actions. Attach reports for review if available).
18. Correspondence with authorities relating to any environmental violations, exceedances, penalty fees and pollution incidents.
19. Records of environmental incidents and remedial steps taken for incidents such as spills, leaks, air emissions etc.
20. Are there any boreholes/wells or natural springs either on the Site or in the surrounding area?
21. Describe groundwater use on-site and in surrounding area (e.g. municipal or residential drinking water, commercial or industrial, agricultural). Is there any groundwater quality testing report available for the Site or adjacent properties?
22. Identify on-site septic tanks, and associated ages, construction, frequency of servicing and details of closure, if applicable.
23. Were any wastes removed from the Site by contractors and records available for review (including types, quantities, disposal destination)?
24. Please indicate if the following items were/are present and approximate quantities:
 - oil filled transformers: _____
 - other oil filled equipment (specify): _____
 - Lead and mercury containing items: _____
25. Have any polluting activities been carried out in the vicinity of the site in the past that could be considered an area of potential environmental concern for the Site?
26. Any industries in the vicinity/area which were shutdown in the past and what was the reason (non-compliances, contamination etc.)?
27. Any other relevant information pertaining to the Site/surrounding properties which may have the potential to cause environmental impact to the Site.

Phase I ESA Questionnaire/Information Request

1. Site contact: Mr. Farhad Shahla ; Title: Transportation Project Engineer, Transportation Infrastructure Management; Length of employment and association with the subject property _____;
2. Municipal Site Address: None available
3. Legal Site Description: Situated on Lot 8 of Concessions 2 and 3 of the geographic Township of Toronto
4. Name and Type of Facility: Road Right of Way
5. Is the Property Leased or Owned? owned
6. Name of Property Owner(s): see sketch
7. Date and Length of Lease: no lease
8. Date and Length of Ownership: see sketch
9. Present Land Use: Road Right of Way
10. How long has the property belonged to the MTO/ the City? Give details of previous property use, previous property owner(s) and date(s) of ownership:
 - see sketch
 - _____

11. Has the Site been associated with landfill/waste disposal and gravel pit operations? What portions of the Site were used for the landfill and pit operations? What were the capacities of the landfill and pit?
12. Are/Were any of the following utilities currently/formerly located on the property? Include Site plans to show locations of both former and current utilities.

Utility	No	Yes	Aboveground	Underground
• Electricity				
• Electrical Transformer(s) Present On-Site				
• Water				
• Natural Gas Pipeline				
• Fuel Oil Tank				
• Sewers				
• Telecommunications – Fibreoptic & Other				
• Oil/Gas Tank				
• Other (describe): _____				

13. Indicate the presence and/or known historical presence of any aboveground storage tanks (AST's) and/or underground storage tanks (UST's) on-site, type of tank(s) (i.e. steel, plastic), approximate size, contents, general condition of the tank(s), condition of the ground surface beneath the tank(s), evidence of spills and/or leaks and presence/absence of secondary containment:
 - _____

SKETCH SHOWING OWNERSHIP
OF SECOND LINE WEST
CITY OF MISSISSAUGA
REGIONAL MUNICIPALITY OF PEEL

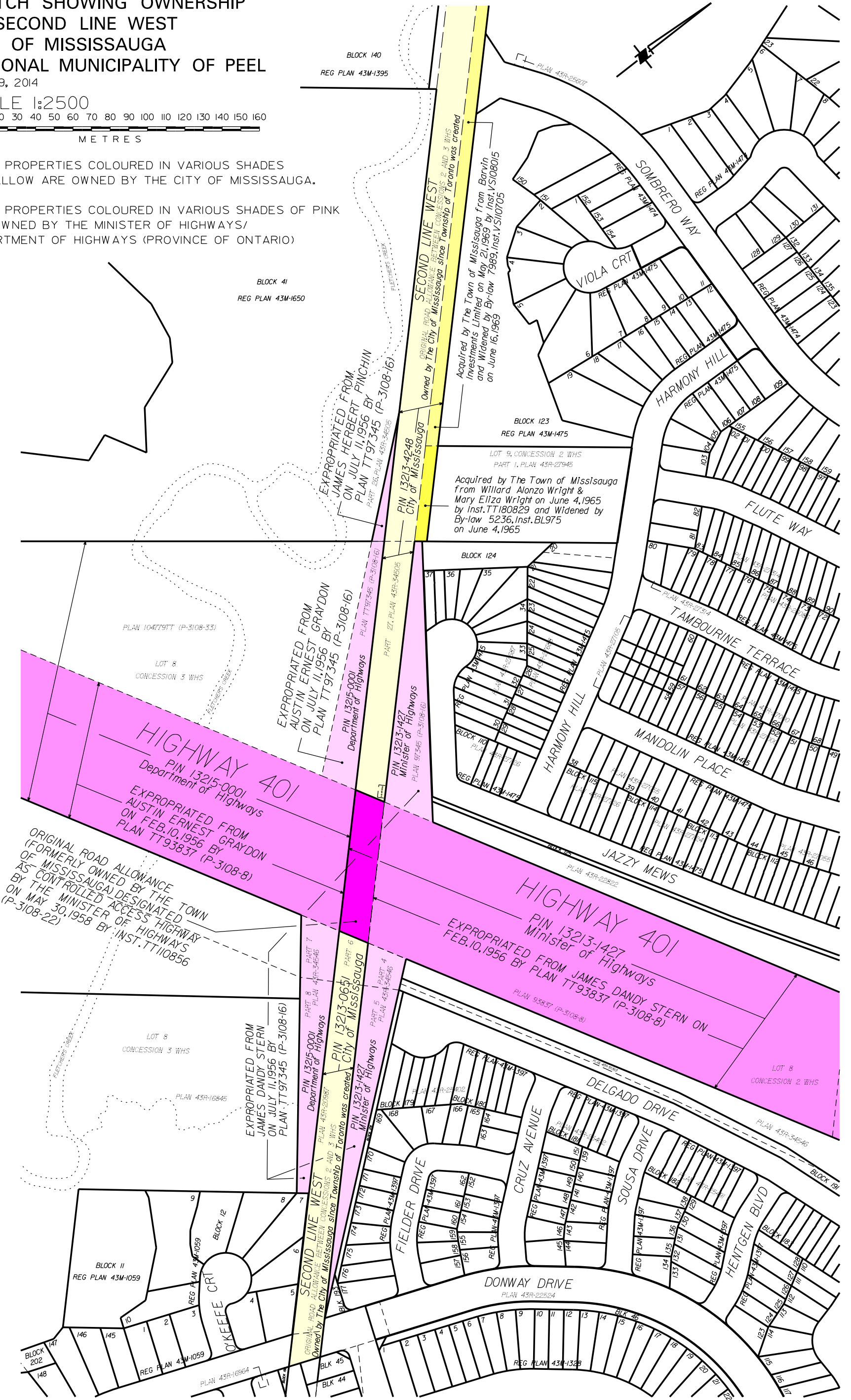
JULY 9, 2014

SCALE 1:2500



NOTE: PROPERTIES COLOURED IN VARIOUS SHADES
OF YELLOW ARE OWNED BY THE CITY OF MISSISSAUGA.

NOTE: PROPERTIES COLOURED IN VARIOUS SHADES OF PINK
ARE OWNED BY THE MINISTER OF HIGHWAYS/
DEPARTMENT OF HIGHWAYS (PROVINCE OF ONTARIO)



NOTE: THIS SKETCH IS FOR THE USE BY THE CITY OF MISSISSAUGA,
TRANSPORTATION AND WORKS DEPARTMENT AND IS NOT INTENDED
FOR USE BY ANY OTHER PARTIES UNLESS EXPRESSED WRITTEN
CONSENT IS OBTAINED.

NOTE: THIS IS NOT A PLAN OF SURVEY AND SHALL NOT BE USED FOR
ANY PURPOSE EXCEPT AS NOTED IN THE TITLE.



MISSISSAUGA
Leading today for tomorrow

Plotted Date

FileName SECOND LINE WEST-PHASE I ESA INFO. REQUEST.DGN

TRANSPORTATION & WORKS DEPT
BUSINESS SERVICES DIVISION
GEOMATICS SECTION
201 CITY CENTRE DR., STE 800
MISSISSAUGA, ONTARIO
L5B 2T4
PHONE 905-615-3200, EXT. 5158

Agnani, Hemant

From: Farhad Shahla <Farhad.Shahla@mississauga.ca>
Sent: Wednesday, July 16, 2014 3:40 PM
To: Agnani, Hemant
Cc: Osojnicki, Mirjana
Subject: RE: Phase I ESA Second Line West Information Request/Questionnaire

Not a problem Hemant and thanks –
Farhad.



Farhad Shahla, M.Eng., P.Eng., PTOE

Transportation Project Engineer, Transportation Infrastructure Management
T 905-615-3200 ext.3377

[City of Mississauga](#) | Transportation and Works Department,
Transportation & Infrastructure Planning Division

Please consider the environment before printing.

From: Agnani, Hemant [<mailto:Hemant.Agnani@aecom.com>]
Sent: 2014/07/16 3:38 PM
To: Farhad Shahla
Cc: Osojnicki, Mirjana
Subject: RE: Phase I ESA Second Line West Information Request/Questionnaire

Thanks. Appreciate your time towards completing the information request.

Regards
Hemant

From: Farhad Shahla [<mailto:Farhad.Shahla@mississauga.ca>]
Sent: Wednesday, July 16, 2014 3:34 PM
To: Agnani, Hemant
Cc: Osojnicki, Mirjana
Subject: RE: Phase I ESA Second Line West Information Request/Questionnaire

Hemant – Let's say 2 years for that question.

Thanks – Farhad.

From: Agnani, Hemant [<mailto:Hemant.Agnani@aecom.com>]
Sent: 2014/07/16 3:29 PM
To: Farhad Shahla
Cc: Osojnicki, Mirjana
Subject: RE: Phase I ESA Second Line West Information Request/Questionnaire

Good afternoon Farhad,

Thanks for sending your responses. There was one question (# 1) for which I'd request you to provide information: Length of your association with the subject property/Site.

Thanks.

Regards
Hemant

From: Farhad Shahla [<mailto:Farhad.Shahla@mississauga.ca>]
Sent: Wednesday, July 16, 2014 3:17 PM
To: Agnani, Hemant
Cc: Osojnicki, Mirjana
Subject: RE: Phase I ESA Second Line West Information Request/Questionnaire

Good afternoon Hemant –

I have already provided you responses for the first 10 questions on the questionnaire for Phase I ESA Second Line W project. Please find below responses to the remainder of questions. Please let me know if you have any questions – Regards – Farhad.

#11 – Contact the Region of Peel, Waste Management Division at 905 791-9499, ext. 7925.

#12 – Contact the individual utilities.

#13 – Contact the Technical Standards and Safety Authority.

#14, 15 and 16 – We have no knowledge of these activities.

#17 – The City does not have any information regarding contamination within this area in our files.

#18, 19 and 20 – None to our knowledge.

#21 – Mississauga is serviced with a lake-based municipal water system, however there may still be wells within the area, and a well survey should be undertaken.

#22, 23, 24, 25, 26 and 27 – We have no knowledge with respect to these questions.



Farhad Shahla, M.Eng., P.Eng., PTOE

Transportation Project Engineer, Transportation Infrastructure Management
T 905-615-3200 ext.3377

[City of Mississauga](#) | Transportation and Works Department,
Transportation & Infrastructure Planning Division

Please consider the environment before printing.

From: Agnani, Hemant [<mailto:Hemant.Agnani@aecom.com>]
Sent: 2014/07/03 1:12 PM
To: Farhad Shahla
Cc: Osojnicki, Mirjana
Subject: Phase I ESA Second Line West Information Request/Questionnaire

Good Afternoon Mr. Farhad Shahla,

I have been given your contact by my colleague Ms. Mirjana Osojnicki, to schedule an interview related to a Phase I Environmental Site Assessment (ESA) for a portion of Second Line West road/structure in Mississauga. Through this interview we'll make an attempt to gather information on the past and current land uses of the Site in an effort to identify areas of potential environmental concerns. I wouldn't expect you to start generating information afresh, but if some information can be gathered/made available within the next few days, it'll be helpful. Some of the questions which are not relevant to this Site may be marked as not applicable. I am fine in case you want to send a response through e-

mail first and then follow-up with a call (if required) or complete this questionnaire directly through a telephonic interview.

Regards
Hemant Agnani
Environmental Scientist, Environment
hemant.agnani@aecom.com

AECOM

105 Commerce Valley Dr. W., Markham, ON L3T 7W3
T 905-747-7625 F 905-886-5206
C: 416-508-8445
www.aecom.com

To better serve our clients across the region, AECOM's Markham offices have joined together. Effective October 21, 2013, we'll be located at the above mentioned address. Please update your records accordingly.

Appendix C

Previous Environmental Reports



**HIGHWAY 401 IMPROVEMENTS
From HIGHWAY 410/403 INTERCHANGE
TO EAST OF THE CREDIT RIVER**

**Region of Peel
City of Mississauga**

**CLASS ENVIRONMENTAL ASSESSMENT FOR
PROVINCIAL TRANSPORTATION FACILITIES
GROUP 'B' PROJECT**

**MINISTRY OF TRANSPORTATION
CENTRAL REGION**

G.W.P. 2149-01-00 and 2150-01-00

**TRANSPORTATION ENVIRONMENTAL
STUDY REPORT**

Volume 1

AUGUST 2005

HIGHWAY 401 IMPROVEMENTS

From Highway 410/403 Interchange To East of the Credit River

**Region of Peel
City of Mississauga**

**CLASS ENVIRONMENTAL ASSESSMENT FOR
PROVINCIAL TRANSPORTATION FACILITIES
GROUP 'B' PROJECT**

**Ministry of Transportation
Central Region
G.W.P. 2149-01-00 and 2150-01-00**

Prepared for the Ministry of Transportation by:
Marshall Macklin Monaghan/Ecoplans Limited

Prepared by:

Rob Kivi, P.Eng.
Consultant Project Manager

J.A. (Sandy) Nairn, MCIP, RPP
Consultant Environmental Planner

Reviewed by:

Darlene Proudfoot, B.A.A.
Environmental Planner

Frank Martins, P.Eng.
Senior Project Engineer

Approved by:

Bill Jones
Manager, Planning & Environmental Office

Lou Politano, P.Eng.
Manager, Engineering Office

THE PUBLIC RECORD

Copies of this document have been submitted to the following offices of the Ministry of the Environment to be placed in the Public Record:

Ministry of the Environment
Halton-Peel District Office
4145 North Service Road, Suite 300
Burlington, ON L7L 6A3

This Transportation Environmental Study Report is also available for review during regular business hours at:

The City of Mississauga
300 City Centre Drive
Mississauga, ON L5B 3C1

Region of Peel
10 Peel Centre Drive
Brampton, ON L6T 4B9

The Ministry of Transportation
Central Region
Planning & Environmental Office
3rd Floor, Building 'D'
1201 Wilson Avenue
Downsview, ON M3M 1J8

Courtneypark Branch Library
730 Courtneypark Drive West
Mississauga, ON L5W 1L9

Ecoplans Limited
2655 North Sheridan Way
Mississauga, ON L5K 2P8

Marshall Macklin Monaghan
80 Commerce Valley Drive East
Thornhill, ON L3T 7N4

Ce document hautement spécialisé n'est disponible qu'en anglais en vertu du règlement 411/97, qui en exempte l'application de la Loi sur les services en français. Pour de l'aide en français, veuillez communiquer avec le ministère des Transports, Bureau des services en français au: 905-704-2045 ou 905-704-2046.

EXECUTIVE SUMMARY

The Ontario Ministry of Transportation (MTO) has retained Marshall Macklin Monaghan to undertake a preliminary design study for improvements to Highway 401 from the Highway 410/403 interchange westerly to east of the Credit River, in the City of Mississauga, Region of Peel. The project follows earlier preliminary design studies, which examined the need and justification for improvements to this section of Highway 401. The current project is reviewing and updating the previous work to confirm the final configuration of improvements with an emphasis on opportunities to integrate transit and High Occupancy Vehicle facilities within the corridor. Ecoplans Limited was retained to carry out the Class Environmental Assessment component of this project.

Based on the earlier evaluation of alternatives, the recommended design includes widening of Highway 401 to provide a 12-lane express/collector configuration.

Specifically, the recommended design includes:

- Widening Highway 401 from a basic 6-lane Highway to a 12-lane express/collector configuration;
- Collector lanes consisting of 3 general purpose lanes in each direction;
- Express lanes consisting of 2 general purpose lanes and 1 HOV lane in each direction;
- Reconstruction of the Hurontario Street interchange, including replacement of the structure over Highway 401;
- Reconstruction of the Mavis Road interchange, including expansion of the existing structure over Highway 401;
- Replacement of the McLaughlin Road structure over Highway 401;
- Removal of the 2nd Line West structure over Highway 401.

Exhibit ES-1 displays the preferred plan for the Highway 401 widening within the project limits.

Information about the following environmental conditions was collected in order to compare alternatives for the highway widening and to assess the environmental impacts of the selected design:

- Natural Environment: physiography and soils, aquatic resources and fisheries, vegetation resources, wildlife resources and environmentally designated areas
- Socio-Economic Environment: adjacent land uses, noise, waste and property contamination and archaeological/heritage resources



- Transportation and Utilities

Following consultation with municipal staff, interested Federal and Provincial Ministries and Agencies and the general public, the environmental assessment was completed. The Table below provides a summary of the anticipated environmental concerns and mitigation measures associated with this project.

Legend

MTO: Ministry of Transportation	CVC: Credit Valley Conservation
MNR: Ministry of Natural Resources	MIS: City of Mississauga
MOE: Ministry of the Environment	RES/BUS: Local residents and/or business owners
MUN: Regional Municipality of Peel	MCL: Ministry of Culture
UTIL: Utilities	TRCA: Toronto Region Conservation Authority

Summary of Identified Concerns and Proposed Mitigation		
ENVIRONMENTAL ISSUE/CONCERN	CONCERNED AGENCIES	PROPOSED MITIGATION
NATURAL ENVIRONMENT		
Erosion and Sediment Control (Section 3.1.1 of TESR)		
<ul style="list-style-type: none"> Soil types have been assessed through secondary source mapping. Further investigations and testing will be completed (sampling, classification, laboratory testing) during detail design. 	MOE MTO MNR CVC TRCA MUN	<ul style="list-style-type: none"> Standard erosion and sediment control measures will be incorporated into the contract. Side slopes will be formed at a maximum of 2 horizontal to 1 vertical to ensure slope stability Carry out a geotechnical investigation to assess the stability of the slope along the west property line for the Fletcher's Creek SWM Pond. Additional measures will be reviewed following completion of the detailed geotechnical investigation.
Management of Excess Material and Property Contamination (Section 3.1.2 of TESR)		
<ul style="list-style-type: none"> The site investigation did identify potential environmental impacts within the Highway corridor and areas within the MTO Patrol Yard. 	MTO MOE	<ul style="list-style-type: none"> Conduct Phase II ESA to assess soil and groundwater conditions associated with past spills along the Highway Corridor. A supplementary Phase II ESA is also recommended in specific areas of the MTO Patrol Yard. Opportunities to minimize waste generation through salvage and reuse will be identified as part of the detail design phase. Excess materials generated during construction will be managed by the Contractor in accordance with OPSS 180.
Fisheries & Aquatic Habitat (Section 3.1.3 of TESR)		
<ul style="list-style-type: none"> There are four watercourses affected by the project which require culvert extensions. 	MOE MNR	<ul style="list-style-type: none"> Construct works during less sensitive time period (July 1 to Sept 15). Minimize in-stream works.

Summary of Identified Concerns and Proposed Mitigation		
ENVIRONMENTAL ISSUE/CONCERN	CONCERNED AGENCIES	PROPOSED MITIGATION
<ul style="list-style-type: none"> Two of these watercourses support warmwater fish species. Existing drainage patterns are being maintained. 	CVC TRCA	<ul style="list-style-type: none"> Implement fisheries mitigation measures for Fletcher's Creek during construction. Isolate the construction area from watercourses through by-pass pumping and temporary diversion of specific reach to install the extensions. Erosion and sediment control measures will be incorporated into the contract.
Vegetation (Section 3.1.4 of TESR)		
<ul style="list-style-type: none"> Impacts to approximately 2 ha of removal of the Meadowvale Station Woods ESA/ANSI due to Highway widening Impacts to 1.5 ha of woodlot in the southwest portion of the Highway 401/403 interchange 	CVC TRCA MNR	<ul style="list-style-type: none"> Only vegetation directly affected by grading, ditching operations and traffic safety will be removed. Graded areas will be covered with topsoil seed and mulch. Landscaping and tree planting will be included in the contract, which will be determined during the detail design stage. Landscaping measures will be implemented in the area of the 2nd Line West to mitigate vegetation removals. Tree management measures will be implemented during construction to protect vegetation not being removed.
Wildlife Habitat (Section 3.1.5 of TESR)		
<ul style="list-style-type: none"> Impacts to wildlife habitat primarily within the Fletcher's creek ESA/ANSI Impacts to the existing wildlife will be of low to moderate significance. 	CVC MNR	<ul style="list-style-type: none"> Existing wildlife habitat areas will not be fragmented, as impacts are limited to edge effects associated with the Highway widening in vicinity of Fletcher's Creek. Amphibian ponds on the east side of Fletcher's Creek are not anticipated to be affected as grading will not affect drainage characteristics. Wildlife passage opportunities through Fletcher's Creek culvert currently low and will remain low.
Drainage (Section 3.1.6 of TESR)		
<ul style="list-style-type: none"> Additional Stormwater runoff from new pavement can impact receiving watercourses and cause flooding. 	MTO	<ul style="list-style-type: none"> Stormwater management practices will be implemented to minimize impacts. Provide SWM Pond for Fletcher's Creek watershed in northwest quadrant of Highway 401 and closed 2nd Line West. Provide SWM Pond for Little Etobicoke Creek Watershed in northwest quadrant of Highway 401 and Highway 403/401 interchange. Provide vegetated swales elsewhere to treat highway runoff.

Summary of Identified Concerns and Proposed Mitigation		
ENVIRONMENTAL ISSUE/CONCERN	CONCERNED AGENCIES	PROPOSED MITIGATION
SOCIO-ECONOMIC ENVIRONMENT		
Adjacent Land Uses/Property (Section 3.2.1 of TESR)		
<ul style="list-style-type: none"> Limited property is required for Highway widening No residential properties are required. No impacts to existing businesses are anticipated. 	MTO RES/BUS	<ul style="list-style-type: none"> Property will be purchased based on fair market value. No residential or commercial buy-outs required since majority of land is within MTO Right-of-Way
Highway & Construction Noise (Section 3.2.2 of TESR)		
<ul style="list-style-type: none"> Residential areas are situated adjacent to Highway 401 within the project limits 	MOE MTO RES/BUS	<ul style="list-style-type: none"> Noise assessment has concluded no mitigation required given noise increase is limited to a maximum of 2 dBA. Where possible, certain operations (e.g. pile driving) will be restricted to daytime hours. Standard contract provisions regarding restrictions on operations causing significant construction noise will be included in the contract. Complaints about noise will be investigated in accordance with the MTO/MOE Noise Protocol.
Archaeology/Heritage (Section 3.2.3 of TESR)		
<ul style="list-style-type: none"> A stage 1-2 Archaeological survey was completed for this project with no significant finds 	MCL MTO	<ul style="list-style-type: none"> If the Contractor's operations expose any items, which may indicate an archaeological find or presence of built heritage structures, work in the area will be suspended immediately and MCL will be contacted.
Air Quality (Section 3.2.4 of TESR)		
<ul style="list-style-type: none"> Impact to air quality during construction 		<ul style="list-style-type: none"> During construction, dust and emissions will be generated by construction equipment and activities. Standard mitigation measures will be applied during the construction. Special Provisions for Dust Suppressants will be incorporated in the contract to ensure dust is effectively managed. Construction equipment will be required to conform to emissions standards and the idling of equipment will be restricted to ensure that air quality is not unduly impacted. Where construction activities are expected to have a direct impact on public traffic, these activities will be undertaken during off-peak periods whenever possible to minimize traffic congestion and idling of vehicles.

Summary of Identified Concerns and Proposed Mitigation		
ENVIRONMENTAL ISSUE/CONCERN	CONCERNED AGENCIES	PROPOSED MITIGATION
TRANSPORTATION		
Traffic (Section 3.4 of TESR)		
<ul style="list-style-type: none">Motorists may experience delays and disruption during construction.	MTO RES/BUS	<ul style="list-style-type: none">Collector lanes will be generally constructed first thereby minimizing traffic disruptions on Highway 401.Closure of Highway 401 lanes only once additional capacity of the network has been provided.Short-term closures will be limited to off-peak and/or nighttime hours

Appendix D

Regulatory Records and Requests

- TSSA

Agnani, Hemant

From: plal@tssa.org on behalf of Public Information Services
<publicinformationservices@tssa.org>
Sent: Monday, July 07, 2014 3:35 PM
To: Agnani, Hemant
Subject: Re: Request for Information on historical and existing tanks and associated piping

Hi Hemant:

Thank you for your inquiry.

We have no record in our database of any fuel storage tanks at the subject address (addresses).

For a further search in our archives please submit your request in writing to Public Information Services via e-mail (publicinformationservices@tssa.org) or through mail along with a fee of \$56.50 (including HST) per location. The fee is payable with credit card (Visa or MasterCard) or with a Cheque made payable to TSSA.

Thank you and have a great day!

Prem
Public Information Services

"Putting Public Safety First"

Technical Standards and Safety Authority
14th Floor, Centre Tower
3300 Bloor Street West
Toronto, ON M8X 2X4

Toll-Free: 1-877-682-8772
Email: publicinformationservices@tssa.org
Web Site: www.tssa.org

On Mon, Jul 7, 2014 at 3:20 PM, Agnani, Hemant <Hemant.Agnani@aecon.com> wrote:

Hello Sarah

Do you have any records/information on file pertaining to historical and current fuel tanks and associated piping for the property legally described as Lot 8, Concession 2 & 3 west of Hurontario Street (WHS), Geographic Township of Toronto, City of Mississauga?

Thanks.

Regards

Hemant Agnani

Environmental Scientist, Environment

hemant.agnani@aecom.com

AECOM

105 Commerce Valley Dr. W., Markham, ON L3T 7W3

T [905-747-7625](tel:905-747-7625) F [905-886-5206](tel:905-886-5206)

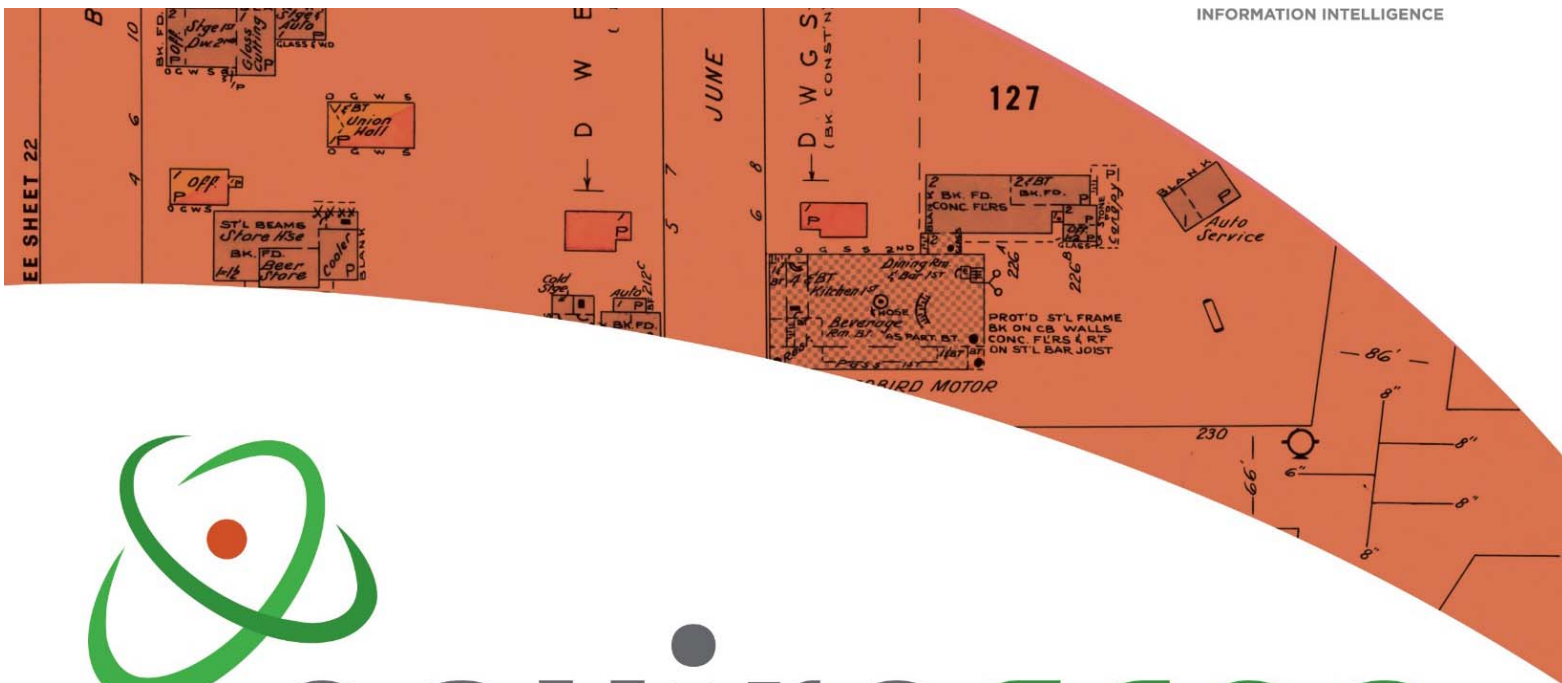
www.aecom.com

To better serve our clients across the region, AECOM's Markham offices have joined together. Effective October 21, 2013, we'll be located at the above mentioned address. Please update your records accordingly.

This electronic message and any attached documents are intended only for the named recipients. This communication from the Technical Standards and Safety Authority may contain information that is privileged, confidential or otherwise protected from disclosure and it must not be disclosed, copied, forwarded or distributed without authorization. If you have received this message in error, please notify the sender immediately and delete the original message.

Appendix E

Opta Environmental Services Records



enviroscan



An SCM Company

175 Commerce Valley Drive W
Markham, Ontario L3T 7Z3

T: 905-882-6300
W: www.optaintel.ca

Report Completed By:

Site Address:

Second Line West, Mississauga, Ontario

Project No:

20140618033

Requested By:

Eleanor Goolab

Opta Order ID:

20140618033

Report Completed By:

Sunita Kapoor

Date Completed:

July 4, 2014



Opta Historical Environmental Services Enviroscan™

DATE: July 4, 2014

Eleanor Goolab
Ecolog Eris
80 Valleybrook Drive
Toronto, Ontario. M3B 2S9

Dear Eleanor,

Re: **Your Site Address:** **Second Line West, Mississauga, Ontario**
 Your Project No.: **20140618033**

As requested, we have searched our records regarding the above site and the following information was found:

Information	Date(s)	Comment	Cost
Research Fee per street address		\$50.00 flat fee per street address.	\$50.00
Fire Insurance Plans	No Record Found	\$100.00 for each Fire Insurance Plan.	
Reports: All Risk/Multi-Risk: Inspection: COPE: Other:	No Record Found	\$55.00 for each Inspection/Survey report No ordered	
Site Plan(s)	No Record Found	\$70.00 for each Site plan	
Subtotal			\$50.00
Minimum order fee of \$155.00			Applicable
2 (two)/4 (four) Day Rush Service			N/A
Total			\$50.00

NRF: No Records Found. NO: Not Ordered.

The total cost for this report is \$50.00 plus courier charges (if applicable) and HST. Please see the Terms and Conditions for our search on page two of this report.

Thank you for employing the services of Opta Information Intelligence.

Sunita Kapoor

Opta Environmental Services



150 Commerce Valley Drive W
Markham, Ontario
L3T 7Z3

T: 905.882.6300
Toll Free: 1.800.268.8080
F: 905.695.6543

An **SCM** Company
www.optaintel.ca



Opta Historical Environmental Services Enviroscan™ Terms and Conditions

Report

The documents (hereinafter referred to as the "Documents") to be released as part of the report (hereinafter referred to as the "Report") to be delivered to the purchaser as set out above are documents in Opta's records relating to the described property (hereinafter referred to as the "Property"). Opta makes no representations or warranties respecting the Documents whatsoever, including, without limitation, with respect to the completeness, accuracy or usefulness of the Documents, and does not represent or warrant that these are the only plans and reports prepared in association with the Property. The Documents are current as of the date(s) indicated on them. Interpretation of the Documents, if any, is by inference based upon the information which is apparent and obvious on the face of the Documents only. Opta does not represent, warrant or guarantee that interpretations other than those referred to do not exist from other sources. The Report will be prepared for use by the purchaser of the services as shown above hereof only.

Disclaimer

Opta disclaims responsibility for any losses or damages of any kind whatsoever, whether consequential or other, however caused, incurred or suffered, arising directly or indirectly as a result of the services (which services include, but are not limited to, the preparation of the Report provided hereunder), including but not limited to, any losses or damages arising directly or indirectly from any breach of contract, fundamental or otherwise, from reliance on Opta Reports or from any tortious acts or omissions of Opta's agents, employees or representatives.

Entire Agreement

The parties hereto acknowledge and agree to be bound by the terms and conditions hereof. The request form constitutes the entire agreement between the parties pertaining to the subject matter hereof and supersedes all prior and contemporaneous agreements, negotiations and discussions, whether oral or written, and there are no representations or warranties, or other agreements between the parties in connection with the subject matter hereof except as specifically set forth herein. No supplement, modification, waiver, or termination of the request shall be binding, unless confirmed in writing by the parties hereto.

Governing Document

In the event of any conflicts or inconsistencies between the provisions hereof and the Reports, the rights and obligations of the parties shall be deemed to be governed by the request form, which shall be the paramount document.

Law

This agreement shall be governed by and construed in accordance with the laws of the Province of Ontario and the laws of Canada applicable therein.



150 Commerce Valley Drive W
Markham, Ontario
L3T 7Z3

T: 905.882.6300
Toll Free: 1.800.268.8080
F: 905.695.6543

An SCM Company
www.optaintel.ca



150 Commerce Valley Drive W
Markham, Ontario
L3T 7Z3

T: 905.882.6300
Toll Free: 1.800.268.8080
F: 905.695.6543

An **SCM** Company
www.optaintel.ca

Appendix F

EcoLog ERIS Report



DATABASE REPORT



Project Property:

*Un-named
Second Line West
Mississauga ON*

P.O. Number

Report Type:

Custom-Build Your Own Report

Order #:

20140618033

Requested by:

Aecom

Date:

June 24, 2014

Ecolog ERIS Ltd.

Environmental Risk Information
Service Ltd. (ERIS)
A division of Glacier Media Inc.
P: 1.866.517.5204
E: info@erisinfo.com

www.erisinfo.com

Table of Contents

Table of Contents.....	1
Executive Summary.....	2
Executive Summary: Report Summary.....	3
Executive Summary: Site Report Summary - Project Property.....	5
Executive Summary: Site Report Summary - Surrounding Properties.....	6
Executive Summary: Summary By Data Source.....	7
Map.....	9
Aerial.....	10
Detail Report.....	11
Unplottable Summary.....	19
Unplottable Report.....	21
Appendix: Database Descriptions.....	31
Definitions.....	41

Notice: IMPORTANT LIMITATIONS and YOUR LIABILITY

Reliance on information in Report: This report DOES NOT replace a full Phase I Environmental Site Assessment but is solely intended to be used as a database review on environmental records.

License for use of information in Report: No page of this report can be used without this cover page, this notice and the project property identifier. The information in Report(s) may not be modified or re-sold.

Your Liability for misuse: Using this Service and/or its reports in a manner contrary to this Notice or your agreement will be in breach of copyright and contract and ERIS may obtain damages for such mis-use, including damages caused to third parties, and gives ERIS the right to terminate your account, rescind your license to any previous reports and to bar you from future use of the Service.

No warranty of Accuracy or Liability for ERIS: The information contained in this report has been produced by EcoLog Environmental Risk Information Services Ltd ("ERIS") using various sources of information, including information provided by Federal and Provincial government departments. The report applies only to the address and up to the date specified on the cover of this report, and any alterations or deviation from this description will require a new report. This report and the data contained herein does not purport to be and does not constitute a guarantee of the accuracy of the information contained herein and does not constitute a legal opinion nor medical advice. Although ERIS has endeavored to present you with information that is accurate, EcoLog ERIS disclaims, any and all liability for any errors, omissions, or inaccuracies in such information and data, whether attributable to inadvertence, negligence or otherwise, and for any consequences arising therefrom. Liability on the part of EcoLog ERIS is limited to the monetary value paid for this report.

Trademark and Copyright: You may not use the ERIS trademarks or attribute any work to ERIS other than as outlined above. This Service and Report(s) are protected by copyright owned by EcoLog ERIS Ltd. Copyright in data used in the Service or Report(s) (the "Data") is owned by EcoLog ERIS or its licensors. The Service, Report(s) and Data may not be copied or reproduced in whole or in any substantial part without prior written consent of EcoLog ERIS.

Executive Summary

Property Information:

Project Property: *Un-named
Second Line West Mississauga ON*

P.O. Number:

Order Information:

Order No.: *20140618033*
Date Requested: *25/06/2014*
Requested by: *Aecom*
Report Type: *Custom-Build Your Own Report*

Additional Products:

Aerial Photographs *National Collection - Digital (PDF)*
Insurance Products *Site Specific Plans*
Insurance Products *Fire Insurance Plans*
Insurance Products *Inspection Reports*

Executive Summary: Report Summary

<i>Database</i>	<i>Name</i>	<i>Searched</i>	<i>Project Property</i>	<i>Boundary to 0.25km</i>	<i>Total</i>
AAGR	Abandoned Aggregate Inventory	Y	0	0	0
AGR	Aggregate Inventory	Y	0	0	0
AMIS	Abandoned Mine Information System	Y	0	0	0
ANDR	Anderson's Waste Disposal Sites	Y	0	0	0
AUWR	Automobile Wrecking & Supplies	Y	0	0	0
BORE	Borehole	Y	3	2	5
CA	Certificates of Approval	Y	1	4	5
CFOT	Commercial Fuel Oil Tanks	Y	0	0	0
CHEM	Chemical Register	Y	0	0	0
COAL	Inventory of Coal Gasification Plants and Coal Tar Sites	Y	0	0	0
CONV	Compliance and Convictions	Y	0	0	0
CPU	Certificates of Property Use	Y	0	0	0
DRL	Drill Hole Database	Y	0	0	0
EASR	Environmental Activity and Sector Registry	Y	0	0	0
EBR	Environmental Registry	Y	0	0	0
ECA	Environmental Compliance Approval	Y	0	0	0
EEM	Environmental Effects Monitoring	Y	0	0	0
EHS	ERIS Historical Searches	Y	0	0	0
EIIS	Environmental Issues Inventory System	Y	0	0	0
EXP	List of TSSA Expired Facilities	Y	0	0	0
FCON	Federal Convictions	Y	0	0	0
FCS	Contaminated Sites on Federal Land	Y	0	0	0
FOFT	Fisheries & Oceans Fuel Tanks	Y	0	0	0
FST	Fuel Storage Tank	Y	0	0	0
FSTH	Fuel Storage Tank - Historic	Y	0	0	0
GEN	Ontario Regulation 347 Waste Generators Summary	Y	0	0	0
HINC	TSSA Historic Incidents	Y	0	0	0
IAFT	Indian & Northern Affairs Fuel Tanks	Y	0	0	0
INC	TSSA Incidents	Y	0	0	0
LIMO	Landfill Inventory Management Ontario	Y	0	0	0
MINE	Canadian Mine Locations	Y	0	0	0
MNR	Mineral Occurrences	Y	0	0	0
NATE	National Analysis of Trends in Emergencies System (NATES)	Y	0	0	0
NCPL	Non-Compliance Reports	Y	0	0	0
NDFT	National Defence & Canadian Forces Fuel Tanks	Y	0	0	0
NDSP	National Defence & Canadian Forces Spills	Y	0	0	0
NDWD	National Defence & Canadian Forces Waste Disposal Sites	Y	0	0	0

<i>Database</i>	<i>Name</i>	<i>Searched</i>	<i>Project Property</i>	<i>Boundary to 0.25km</i>	<i>Total</i>
NEES	National Environmental Emergencies System (NEES)	Y	0	0	0
NPCB	National PCB Inventory	Y	0	0	0
NPRI	National Pollutant Release Inventory	Y	0	0	0
OGW	Oil and Gas Wells	Y	0	0	0
OOGW	Ontario Oil and Gas Wells	Y	0	0	0
OPCB	Inventory of PCB Storage Sites	Y	0	0	0
ORD	Orders	Y	0	0	0
PAP	Canadian Pulp and Paper	Y	0	0	0
PCFT	Parks Canada Fuel Storage Tanks	Y	0	0	0
PES	Pesticide Register	Y	0	0	0
PINC	TSSA Pipeline Incidents	Y	0	0	0
PRT	Private and Retail Fuel Storage Tanks	Y	0	0	0
PTTW	Permit to Take Water	Y	0	0	0
REC	Ontario Regulation 347 Waste Receivers Summary	Y	0	0	0
RSC	Record of Site Condition	Y	0	0	0
RST	Retail Fuel Storage Tanks	Y	0	0	0
SCT	Scott's Manufacturing Directory	Y	0	0	0
SPL	Ontario Spills	Y	0	1	1
SRDS	Wastewater Discharger Registration Database	Y	0	0	0
TANK	Anderson's Storage Tanks	Y	0	0	0
TCFT	Transport Canada Fuel Storage Tanks	Y	0	0	0
VAR	TSSA Variances for Abandonment of Underground Storage Tanks	Y	0	0	0
WDS	Waste Disposal Sites - MOE CA Inventory	Y	0	0	0
WDSH	Waste Disposal Sites - MOE 1991 Historical Approval Inventory	Y	0	0	0
WWIS	Water Well Information System	Y	0	7	7
Total:			4	14	18

Executive Summary: Site Report Summary - Project Property

<i>Map Key</i>	<i>DB</i>	<i>Company/Site Name</i>	<i>Address</i>	<i>Dir/Dist m</i>	<i>Elev diff m</i>	<i>Page Number</i>
1	BORE		ON	-/0.0	166.84	11
3	BORE		ON	-/0.0	166.84	11
5	BORE		ON	-/0.0	166.84	11
9	CA	2096553 Ontario Inc.	6695 Second Line Mississauga ON	-/0.0	166.84	12

Executive Summary: Site Report Summary - Surrounding Properties

Map Key	DB	Company/Site Name	Address	Dir/Dist m	Elev diff m	Page Number
2	BORE		ON	SSE/18.7	166.84	12
4	BORE		ON	S/48.4	166.84	13
6	WWIS		lot 9 con 3 ON	WNW/8.8	166.84	13
7	WWIS		lot 9 con 2 ON	NNW/41.9	166.84	14
8	WWIS		lot 9 con 3 ON	WSW/141.6	166.84	14
10	CA	FIELDGATE DEV. & CONST. LTD.	FIELDER DR/DONWAY DR/CRUZ AVE. MISSISSAUGA CITY ON	ESE/44.7	167.44	15
10	CA	FIELDGATE DEV. & CONST. LTD.	FIELDER DR/DONWAY DR/CRUZ AVE. MISSISSAUGA CITY ON	ESE/44.7	167.44	15
11	CA	FITZWOOD INVESTMENTS LIMITED	NEWCOMBE DR/SEAVAR RD. MISSISSAUGA CITY ON	SE/67.9	168.12	15
11	CA	FITZWOOD INVESTMENTS LIMITED	NEWCOMBE DR/SEAVAR RD. MISSISSAUGA CITY ON	SE/67.9	168.12	16
12	WWIS		lot 9 con 3 ON	NW/86.8	166.84	16
13	WWIS		lot 9 con 3 ON	NW/92.7	166.84	17
14	WWIS		lot 9 con 2 ON	NW/112.3	166.84	17
15	WWIS		lot 10 con 3 ON	NW/155.2	166.84	18
16	SPL		6775 Early Settler Row<UNOFFICIAL> Mississauga ON L5W 1J5	WNW/188.0	166.84	18

Executive Summary: Summary By Data Source

BORE - Borehole

A search of the BORE database, dated 1875-Aug 2011 has found that there are 5 BORE site(s) within approximately 0.25 kilometers of the project property.

<u>Site</u>	<u>Address</u>	<u>Distance m</u>	<u>Map Key</u>
	ON	0.0	<u>1</u>
	ON	18.7	<u>2</u>
	ON	0.0	<u>3</u>
	ON	48.4	<u>4</u>
	ON	0.0	<u>5</u>

CA - Certificates of Approval

A search of the CA database, dated 1985-Oct 30, 2011* has found that there are 5 CA site(s) within approximately 0.25 kilometers of the project property.

<u>Site</u>	<u>Address</u>	<u>Distance m</u>	<u>Map Key</u>
2096553 Ontario Inc.	6695 Second Line Mississauga ON	0.0	<u>9</u>
FIELDGATE DEV. & CONST. LTD.	FIELDER DR/DONWAY DR/CRUZ AVE. MISSISSAUGA CITY ON	44.7	<u>10</u>
FIELDGATE DEV. & CONST. LTD.	FIELDER DR/DONWAY DR/CRUZ AVE. MISSISSAUGA CITY ON	44.7	<u>10</u>
FITZWOOD INVESTMENTS LIMITED	NEWCOMBE DR/SEAVER RD. MISSISSAUGA CITY ON	67.9	<u>11</u>
FITZWOOD INVESTMENTS LIMITED	NEWCOMBE DR/SEAVER RD. MISSISSAUGA CITY ON	67.9	<u>11</u>

SPL - Ontario Spills

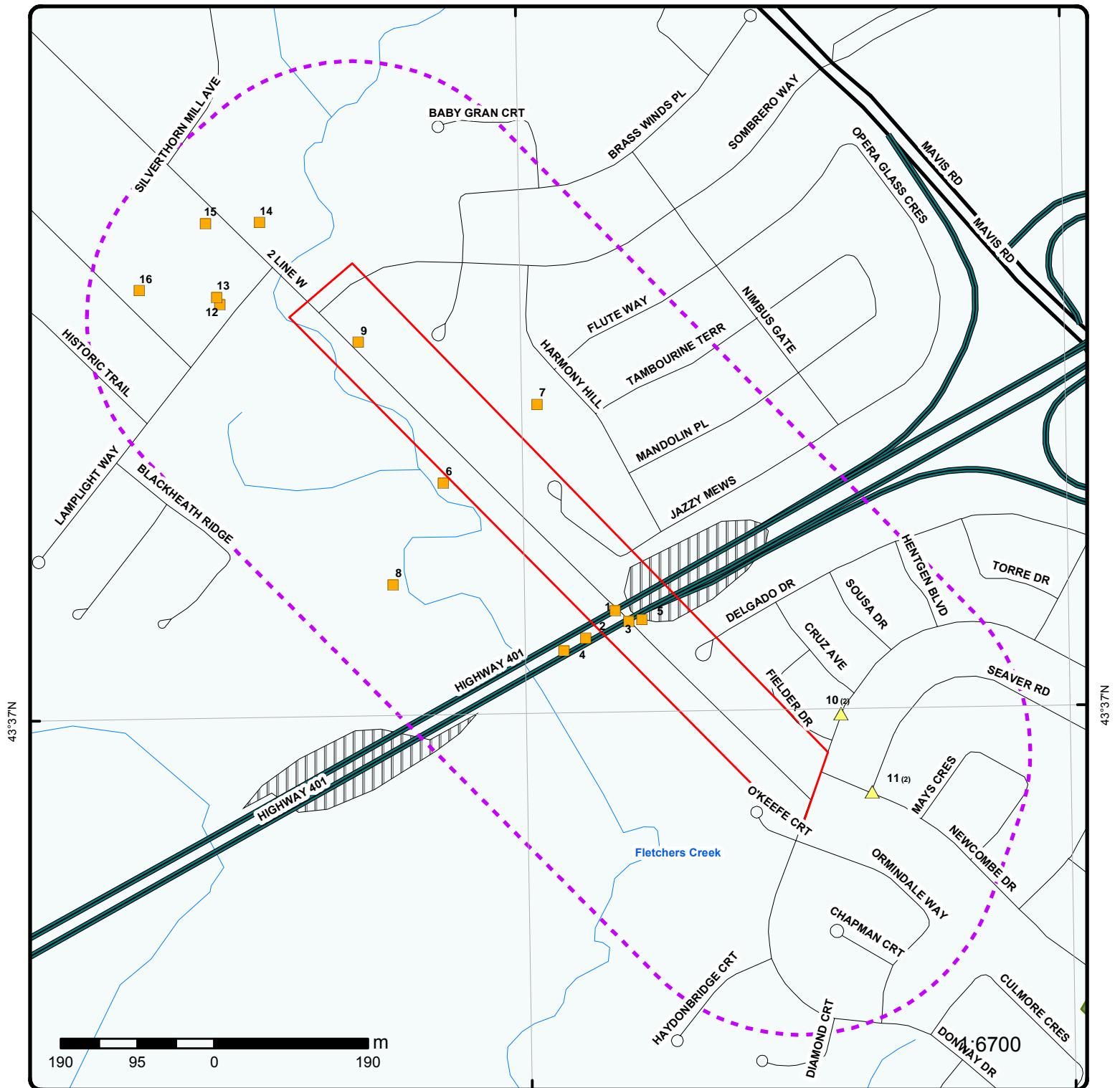
A search of the SPL database, dated 1988-Jun 2013 has found that there are 1 SPL site(s) within approximately 0.25 kilometers of the project property.

<u>Site</u>	<u>Address</u>	<u>Distance m</u>	<u>Map Key</u>
	6775 Early Settler Row<UNOFFICIAL> Mississauga ON L5W 1J5	188.0	<u>16</u>

WWIS - Water Well Information System

A search of the WWIS database, dated 1955-May 2013 has found that there are 7 WWIS site(s) within approximately 0.25 kilometers of the project property.

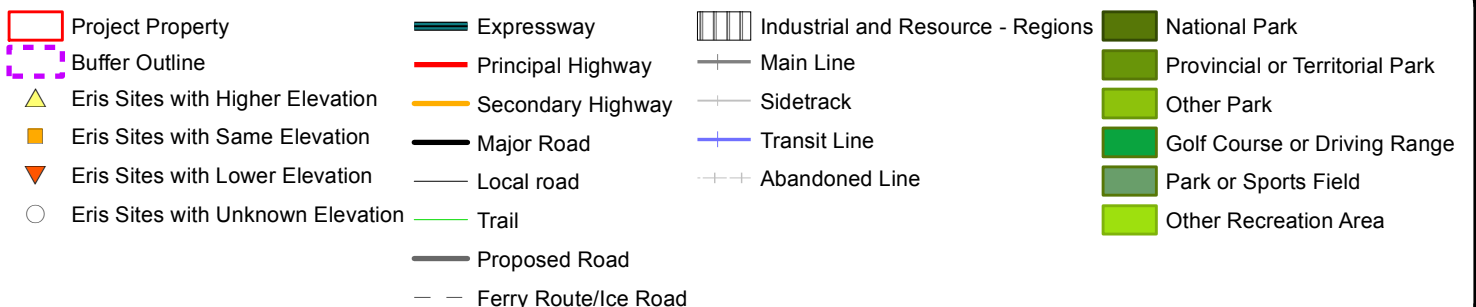
<u>Site</u>	<u>Address</u>	<u>Distance m</u>	<u>Map Key</u>
	lot 9 con 3 ON	8.8	<u>6</u>
	lot 9 con 2 ON	41.9	<u>7</u>
	lot 9 con 3 ON	141.6	<u>8</u>
	lot 9 con 3 ON	86.8	<u>12</u>
	lot 9 con 3 ON	92.7	<u>13</u>
	lot 9 con 2 ON	112.3	<u>14</u>
	lot 10 con 3 ON	155.2	<u>15</u>



Map

Order No: 20140618033

Address: Second Line West, Mississauga, ON



79°43'W

43°37'N

43°37'N



Aerial

Order No: 20140618033

Address: Second Line West, Mississauga, ON

Source: ESRI World Imagery, Updated December 2012

© Ecolog ERIS Ltd

Detail Report

Map Key	Number of Records	Direction/ Distance m	Elevation m	Site	DB
<u>1</u>	1 of 1	-/0.0	166.8	ON	BORE
<div> <div> Borehole ID: 853205 Use: Geotechnical/Geological Investigation Drill Method: Hollow stem auger Easting: 603657.000 Location Accuracy: Elev. Reliability Note: Total Depth m: 13.600000 Township: TORONTO Lot: Completion Date: 1957-MAY-28 Primary Water Use: </div> <div> Type: Borehole Status: Decommissioned UTM Zone: 17 Northing: 4830225.000 Orig. Ground Elev m: 173.699997 DEM Ground Elev m: 175.199997 Primary Name: Concession: Municipality: Static Water Level: 2.100000 Sec. Water Use: </div> </div>					
--- Details ---					
<div> <div> Stratum ID: 218624654 Bottom Depth m: 0.200000 + Stratum ID: 218624655 Bottom Depth m: 4.700000 + Stratum ID: 218624656 Bottom Depth m: 13.600000 </div> <div> Top Depth m: 0 Stratum Desc: Topsoil Top Depth m: 0.200000 Stratum Desc: Brown clay till Top Depth m: 4.700000 Stratum Desc: Grey clay till </div> </div>					
<u>3</u>	1 of 1	-/0.0	166.8	ON	BORE
<div> <div> Borehole ID: 853206 Use: Geotechnical/Geological Investigation Drill Method: Hollow stem auger Easting: 603674.000 Location Accuracy: Elev. Reliability Note: Total Depth m: 3.500000 Township: TORONTO Lot: Completion Date: 1957-MAY-31 Primary Water Use: </div> <div> Type: Borehole Status: Decommissioned UTM Zone: 17 Northing: 4830212.000 Orig. Ground Elev m: 173.699997 DEM Ground Elev m: 174.699997 Primary Name: Concession: Municipality: Static Water Level: Sec. Water Use: </div> </div>					
--- Details ---					
<div> <div> Stratum ID: 218624657 Bottom Depth m: 1.800000 + Stratum ID: 218624658 Bottom Depth m: 3.500000 </div> <div> Top Depth m: 0 Stratum Desc: Gravel till and organic loam Top Depth m: 1.800000 Stratum Desc: Brown clay till </div> </div>					
<u>5</u>	1 of 1	-/0.0	166.8	ON	BORE

Map Key	Number of Records	Direction/ Distance m	Elevation m	Site	DB
Borehole ID:	853207			Type:	Borehole
Use:	Geotechnical/Geological Investigation			Status:	Decommissioned
Drill Method:	Hollow stem auger			UTM Zone:	17
Easting:	603690.000			Northing:	4830214.000
Location Accuracy:				Orig. Ground Elev m:	174.699997
Elev. Reliability Note:				DEM Ground Elev m:	172.399994
Total Depth m:	10.500000			Primary Name:	
Township:	TORONTO			Concession:	CON 2 WEST OF CENTRE ROAD OR HURONTARIO STREET
Lot:	LOT 8			Municipality:	
Completion Date:	1957-JUN-5			Static Water Level:	2.600000
Primary Water Use:				Sec. Water Use:	
--- Details ---					
Stratum ID:	218624659			Top Depth m:	0
Bottom Depth m:	0.200000			Stratum Desc:	Topsoil
+					
Stratum ID:	218624660			Top Depth m:	0.200000
Bottom Depth m:	3.200000			Stratum Desc:	Brown clay till
+					
Stratum ID:	218624661			Top Depth m:	3.200000
Bottom Depth m:	10.500000			Stratum Desc:	Grey clay till

9 **1 of 1** **-/0.0** **166.8** **2096553 Ontario Inc.** **CA**
6695 Second Line
Mississauga ON

Certificate #: 5775-7V9GQF
Application Year: 2009
Issue Date: 8/26/2009
Approval Type: Municipal and Private Sewage Works
Status: Approved
Application Type:
Client Name:
Client Address:
Client City:
Client Postal Code:
Project Description:
Contaminants:
Emission Control:

2 **1 of 1** **SSE/18.7** **166.8** **ON** **BORE**

Borehole ID: 853209 Type: Borehole
Use: Geotechnical/Geological Investigation Status: Decommissioned
Drill Method: Hollow stem auger UTM Zone: 17
Easting: 603621.000 Northing: 4830191.000
Location Accuracy: Orig. Ground Elev m: 165.600006
Elev. Reliability Note: DEM Ground Elev m: 168.899994
Total Depth m: 6.100000 Primary Name:
Township: TORONTO Concession: CON 3 WEST OF CENTRE ROAD OR
HURONTARIO STREET
Lot: LOT 8 Municipality:
Completion Date: 1957-JUN-6 Static Water Level:
Primary Water Use: Sec. Water Use:

--- Details ---

Map Key	Number of Records	Direction/ Distance m	Elevation m	Site	DB
Stratum ID:	218624665			Top Depth m:	0
Bottom Depth m:	3			Stratum Desc:	Brown clay till (fairly soft)
+					
Stratum ID:	218624666			Top Depth m:	3
Bottom Depth m:	4.900000			Stratum Desc:	Grey clay till (soft)
+					
Stratum ID:	218624667			Top Depth m:	4.900000
Bottom Depth m:	6.100000			Stratum Desc:	Grey sandy loam till (hard)

4	1 of 1	S/48.4	166.8	ON	BORE
Borehole ID:	853208			Type:	Borehole
Use:	Geotechnical/Geological Investigation			Status:	Decommissioned
Drill Method:	Hollow stem auger			UTM Zone:	17
Easting:	603594.000			Northing:	4830176.000
Location Accuracy:				Orig. Ground Elev m:	164.100006
Elev. Reliability Note:				DEM Ground Elev m:	168.600006
Total Depth m:	6.400000			Primary Name:	
Township:	TORONTO			Concession:	CON 3 WEST OF CENTRE ROAD OR HURONTARIO STREET
Lot:	LOT 8			Municipality:	
Completion Date:	1957-JUN-5			Static Water Level:	
Primary Water Use:				Sec. Water Use:	
--- Details ---					
Stratum ID:	218624662			Top Depth m:	0
Bottom Depth m:	3			Stratum Desc:	Brown clay till (moist and slightly soft)
+					
Stratum ID:	218624663			Top Depth m:	3
Bottom Depth m:	4.600000			Stratum Desc:	Grey clay till (wet and soft)
+					
Stratum ID:	218624664			Top Depth m:	4.600000
Bottom Depth m:	6.400000			Stratum Desc:	Grey sandy loam till (Dry and stiff)

6	1 of 1	WNW/8.8	166.8	lot 9 con 3 ON	WWIS
Well ID:	4905542			Lot:	009
Concession:	03			Concession Name:	HS W
County:	PEEL			Municipality:	MISSISSAUGA
Easting Nad83:	603444.6			Northing Nad83:	4830383
Zone:	17			Utm Reliability:	margin of error : 30 m - 100 m
Primary Water Use:	Domestic			Construction Date:	25-OCT-78
Sec. Water Use:				Well Depth:	87 ft
Pump Rate:	10 GPM			Static Water Level:	8 ft
Flow Rate:				Clear/Cloudy:	CLEAR
Specific Capacity:				Final Well Status:	Water Supply
Construction Method:	Cable Tool			Flowing (y/n):	N
Elevation (m):	164.83			Elevation Reliability:	
Depth to Bedrock:				Overburden/Bedrock:	Overburden
Water Type:	Not stated			Casing Material:	STEEL
--- Details ---					
Thickness:	36 ft			Original Depth:	36 ft

Map Key	Number of Records	Direction/ Distance m	Elevation m	Site	DB
Material Colour:	BROWN			Material:	CLAY, STONES
+					
Thickness:	42 ft			Original Depth:	78 ft
Material Colour:	GREY			Material:	CLAY
+					
Thickness:	9 ft			Original Depth:	87 ft
Material Colour:	GREY			Material:	GRAVEL

7	1 of 1	NNW/41.9	166.8	lot 9 con 2 ON	WWIS
Well ID:	4902549			Lot:	009
Concession:	02			Concession Name:	HS W
County:	PEEL			Municipality:	MISSISSAUGA
Easting Nad83:	603560.6			Northing Nad83:	4830480
Zone:	17			Utm Reliability:	unknown UTM
Primary Water Use:	Domestic			Construction Date:	23-OCT-56
Sec. Water Use:				Well Depth:	9 ft
Pump Rate:				Static Water Level:	16 ft
Flow Rate:				Clear/Cloudy:	CLEAR
Specific Capacity:				Final Well Status:	Water Supply
Construction Method:	Boring			Flowing (y/n):	N
Elevation (m):	175.82			Elevation Reliability:	
Depth to Bedrock:				Overburden/Bedrock:	Overburden
Water Type:	FRESH			Casing Material:	STEEL
--- Details ---					
Thickness:	4 ft			Original Depth:	4 ft
Material Colour:				Material:	CLAY
+					
Thickness:	5 ft			Original Depth:	9 ft
Material Colour:				Material:	CLAY, STONES
+					
Thickness:	6 ft			Original Depth:	15 ft
Material Colour:	BLUE			Material:	CLAY
+					
Thickness:	2 ft			Original Depth:	17 ft
Material Colour:				Material:	MEDIUM SAND, GRAVEL
+					
Thickness:	4 ft			Original Depth:	21 ft
Material Colour:	GREY			Material:	CLAY

8	1 of 1	WSW/141.6	166.8	lot 9 con 3 ON	WWIS
Well ID:	4905824			Lot:	009
Concession:	03			Concession Name:	HS W
County:	PEEL			Municipality:	MISSISSAUGA
Easting Nad83:	603382.6			Northing Nad83:	4830257
Zone:	17			Utm Reliability:	margin of error : 30 m - 100 m
Primary Water Use:	Domestic			Construction Date:	01-AUG-81
Sec. Water Use:				Well Depth:	78 ft
Pump Rate:	12 GPM			Static Water Level:	8 ft
Flow Rate:				Clear/Cloudy:	CLEAR
Specific Capacity:				Final Well Status:	Water Supply

Map Key	Number of Records	Direction/ Distance m	Elevation m	Site	DB
Construction Method: Elevation (m): Depth to Bedrock: Water Type:	Cable Tool 165.7 FRESH			Flowing (y/n): N Elevation Reliability: Overburden/Bedrock: Overburden Casing Material: STEEL	
--- Details ---					
Thickness:	16 ft			Original Depth:	16 ft
Material Colour:	BROWN			Material:	CLAY
+					
Thickness:	60 ft			Original Depth:	76 ft
Material Colour:	GREY			Material:	CLAY
+					
Thickness:	2 ft			Original Depth:	78 ft
Material Colour:	GREY			Material:	GRAVEL
10	1 of 2	ESE/44.7	167.4	FIELDGATE DEV. & CONST. LTD. FIELDER DR/DONWAY DR/CRUZ AVE. MISSISSAUGA CITY ON	CA
Certificate #:	7-0838-99-				
Application Year:	99				
Issue Date:	10/15/1999				
Approval Type:	Municipal water				
Status:	Approved				
Application Type:					
Client Name:					
Client Address:					
Client City:					
Client Postal Code:					
Project Description:					
Contaminants:					
Emission Control:					
10	2 of 2	ESE/44.7	167.4	FIELDGATE DEV. & CONST. LTD. FIELDER DR/DONWAY DR/CRUZ AVE. MISSISSAUGA CITY ON	CA
Certificate #:	3-1224-99-				
Application Year:	99				
Issue Date:	10/15/1999				
Approval Type:	Municipal sewage				
Status:	Approved				
Application Type:					
Client Name:					
Client Address:					
Client City:					
Client Postal Code:					
Project Description:					
Contaminants:					
Emission Control:					
11	1 of 2	SE/67.9	168.1	FITZWOOD INVESTMENTS LIMITED NEWCOMBE DR/SEAVER RD. MISSISSAUGA CITY ON	CA

Map Key	Number of Records	Direction/ Distance m	Elevation m	Site	DB
Certificate #:		7-1071-95-006			
Application Year:		95			
Issue Date:		11/9/95			
Approval Type:		Municipal water			
Status:		Approved			
Application Type:					
Client Name:					
Client Address:					
Client City:					
Client Postal Code:					
Project Description:					
Contaminants:					
Emission Control:					
11	2 of 2	SE/67.9	168.1	FITZWOOD INVESTMENTS LIMITED NEWCOMBE DR/SEAVAR RD. MISSISSAUGA CITY ON	CA
Certificate #:		3-1522-95-006			
Application Year:		95			
Issue Date:		11/9/95			
Approval Type:		Municipal sewage			
Status:		Approved			
Application Type:					
Client Name:					
Client Address:					
Client City:					
Client Postal Code:					
Project Description:					
Contaminants:					
Emission Control:					
12	1 of 1	NW/86.8	166.8	lot 9 con 3 ON	WWIS
Well ID:		4902592		Lot:	009
Concession:		03		Concession Name:	HS W
County:		PEEL		Municipality:	MISSISSAUGA
Easting Nad83:		603168.6		Northing Nad83:	4830604
Zone:		17		Utm Reliability:	margin of error : 100 m - 300 m
Primary Water Use:		Domestic		Construction Date:	15-NOV-59
Sec. Water Use:				Well Depth:	97 ft
Pump Rate:		12 GPM		Static Water Level:	13 ft
Flow Rate:				Clear/Cloudy:	CLEAR
Specific Capacity:				Final Well Status:	Water Supply
Construction Method:		Cable Tool		Flowing (y/n):	N
Elevation (m):		171.7		Elevation Reliability:	
Depth to Bedrock:				Overburden/Bedrock:	Overburden
Water Type:		FRESH		Casing Material:	STEEL
--- Details ---					
Thickness:		35 ft		Original Depth:	35 ft
Material Colour:				Material:	PREVIOUSLY DUG
+					
Thickness:		35 ft		Original Depth:	70 ft
Material Colour:		GREY		Material:	CLAY, STONES
+					
16	erisinfo.com EcoLog ERIS Ltd. Un-named Second Line West Mississauga ON			Order #: 20140618033	

Map Key	Number of Records	Direction/ Distance m	Elevation m	Site	DB
Thickness:	15 ft			Original Depth:	85 ft
Material Colour:	GREY			Material:	FINE SAND, CLAY
+					
Thickness:	12 ft			Original Depth:	97 ft
Material Colour:				Material:	GRAVEL
13	1 of 1	NW/92.7	166.8	lot 9 con 3 ON	WWIS
Well ID:	4903064			Lot:	009
Concession:	03			Concession Name:	HS W
County:	PEEL			Municipality:	MISSISSAUGA
Easting Nad83:	603164.6			Northing Nad83:	4830613
Zone:	17			Utm Reliability:	margin of error : 30 m - 100 m
Primary Water Use:	Domestic			Construction Date:	10-OCT-68
Sec. Water Use:				Well Depth:	70 ft
Pump Rate:	20 GPM			Static Water Level:	16 ft
Flow Rate:				Clear/Cloudy:	CLEAR
Specific Capacity:				Final Well Status:	Water Supply
Construction Method:	Cable Tool			Flowing (y/n):	N
Elevation (m):	170.8			Elevation Reliability:	
Depth to Bedrock:				Overburden/Bedrock:	Overburden
Water Type:	FRESH			Casing Material:	STEEL
--- Details ---					
Thickness:	70 ft			Original Depth:	70 ft
Material Colour:	GREY			Material:	CLAY
+					
Thickness:	30 ft			Original Depth:	100 ft
Material Colour:				Material:	GRAVEL, CLAY
14	1 of 1	NW/112.3	166.8	lot 9 con 2 ON	WWIS
Well ID:	4902547			Lot:	009
Concession:	02			Concession Name:	HS W
County:	PEEL			Municipality:	MISSISSAUGA
Easting Nad83:	603217.6			Northing Nad83:	4830705
Zone:	17			Utm Reliability:	unknown UTM
Primary Water Use:	Domestic			Construction Date:	15-JUN-47
Sec. Water Use:				Well Depth:	70 ft
Pump Rate:				Static Water Level:	15 ft
Flow Rate:				Clear/Cloudy:	
Specific Capacity:				Final Well Status:	Water Supply
Construction Method:	Cable Tool			Flowing (y/n):	N
Elevation (m):	168.13			Elevation Reliability:	
Depth to Bedrock:				Overburden/Bedrock:	Overburden
Water Type:	FRESH			Casing Material:	STEEL
--- Details ---					
Thickness:	30 ft			Original Depth:	30 ft
Material Colour:	YELLOW			Material:	CLAY
+					
Thickness:	40 ft			Original Depth:	70 ft
Material Colour:	BLUE			Material:	CLAY, STONES

Map Key	Number of Records	Direction/ Distance m	Elevation m	Site	DB
15	1 of 1	NW/155.2	166.8	lot 10 con 3 ON	WWIS
Well ID:	4902590			Lot:	010
Concession:	03			Concession Name:	HS W
County:	PEEL			Municipality:	MISSISSAUGA
Easting Nad83:	603150.6			Northing Nad83:	4830704
Zone:	17			Utm Reliability:	unknown UTM
Primary Water Use:	Domestic			Construction Date:	04-SEP-53
Sec. Water Use:				Well Depth:	90 ft
Pump Rate:	30 GPM			Static Water Level:	23 ft
Flow Rate:				Clear/Cloudy:	CLOUDY
Specific Capacity:				Final Well Status:	Water Supply
Construction Method:	Cable Tool			Flowing (y/n):	N
Elevation (m):	168.79			Elevation Reliability:	
Depth to Bedrock:				Overburden/Bedrock:	Overburden
Water Type:	FRESH			Casing Material:	STEEL
--- Details ---					
Thickness:	42 ft			Original Depth:	42 ft
Material Colour:				Material:	CLAY
+					
Thickness:	18 ft			Original Depth:	60 ft
Material Colour:				Material:	SILT
+					
Thickness:	3 ft			Original Depth:	63 ft
Material Colour:				Material:	SILT, GRAVEL
+					
Thickness:	27 ft			Original Depth:	90 ft
Material Colour:				Material:	SILT, STONES

16	1 of 1	WNW/188.0	166.8	6775 Early Settler Row<UNOFFICIAL> Mississauga ON L5W 1J5	SPL
Ref No.: 0341-6AQRHW					
Incident Dt: 3/21/2005					
MOE Reported Dt: 3/22/2005					
Contaminant Name: DIESEL FUEL					
Contaminant Quantity: 1 L					
Incident Summary: Diesel to property from leaking trailer					
Incident Cause: Pipe Or Hose Leak					
Incident Reason: Unknown - Reason not determined					
Nature of Impact: Soil Contamination					
Receiving Medium: Air					
Environmental Impact: Possible					

Unplottable Summary

DB	Company Name/Site Name	Address	City	Postal
AAGR		Lot 7 Con 2	Peel ON	
CA	FITZWOOD INVESTMENTS LTD. PH. 2 N.	CREDITVALLEY MEADOWS PH. 2	MISSISSAUGA CITY ON	
CA	FITZWOOD INVESTMENTS LIMITED	CREDITVALLEY PH.4 E/DONWAY DR.	MISSISSAUGA CITY ON	
CA	FITZWOOD INVESTMENTS LIMITED	CREDITVALLEY PH.4 E/DONWAY DR.	MISSISSAUGA CITY ON	
CA	REG. MUN. OF PEEL	SECOND LINE W.	MISSISSAUGA ON	
CA	FITZWOOD INVESTMENTS LTD.-CONC. 3 W.H.S	O'KEEFE CRT./PT. LOT 8	MISSISSAUGA CITY ON	
CA	Arrowsmith Village- Phase 7 (21T-99014M)	Part of Lot 8, Concession 2, WHS	Mississauga ON	
CA	Arrowsmith Village- Phase 7 (21T-99014M)	Part of Lot 8, Concession 2, WHS	Mississauga ON	
CA		Pt. Lot 8, Con. 2	MISSISSAUGA ON	
CA		Part of Lot 9 and 10, Concession 2	Mississauga ON	
CA	FITZWOOD INVESTMENTS LIMITED PH. II S.	BIDWELL TRAIL CREDIT VALLEY	MISSISSAUGA CITY ON	
CA	FITZWOOD INVESTMENTS LIMITED	CREDITVALLEY MEADOWS PH. 2	MISSISSAUGA CITY ON	
CA	REG.MUN.OF PEEL	SECOND LINE W.	MISSISSAUGA ON	
CA	FITZWOOD INVESTMENTS LTD. - PT. LOT 8	O'KEEFE CRT.-CONC. 3 W.H.S.	MISSISSAUGA CITY ON	
GEN	Brookfield Lepage Johnson Controls	HWY 401 Info Center	Mississauga ON	
PTTW	Credit Valley Golf and Country Club	Lot 7, Concession 2	Mississauga ON	
PTTW	Credit Valley Golf and Country Club	Lot 7, Concession 2	Mississauga ON	

SPL		2nd Line, just south of Steeles	Mississauga ON
SPL	SHELL CANADA PRODUCTS LTD.	2ND LINE WEST RR #6	MISSISSAUGA CITY ON
SPL		Hwy 401 Ebound, W of Hwy Mississauga Rd.	Mississauga ON
SPL		401E between Mavis and Hurontario	Mississauga ON
SPL	Ontario Provincial Police	Hwy 401<UNOFFICIAL>	Mississauga ON
SPL		Hwy 401, just east of Mississauga Rd.	Mississauga ON
SPL		Hwy 401 E<UNOFFICIAL>	Mississauga ON
SPL	PRIVATE OWNER	HWY 401 EASTBOUND, EAST OF HWY 10	MISSISSAUGA CITY ON
SPL	TRANSPORT TRUCK	HWY 401 EASTBOUND ON SOUTH SIDE SHOULDER JUST EAST OF HWY 10	MISSISSAUGA CITY ON
SPL	TRANSPORT TRUCK	HWY 401 EASTBOUND JUST EAST OF MISSISSAUGA ROAD.	MISSISSAUGA CITY ON
SPL	PRIVATE OWNER	W/B 401, CENTRE CORE, RIGHT SHOULDER CATCH BASIN	MISSISSAUGA CITY ON
SPL	ASHLAND CHEMICALS	HWY 401	MISSISSAUGA CITY ON
SPL			Mississauga ON
SPL		Hwy. 401, east-bound collector lane just west of Dixie Rd. <UNOFFICIAL>	Mississauga ON
SPL		WESTBOUND LANES OF HIGHWAY 401 JUST EAST OF HURONTARIO, HIGHWAY 10<UNOFFICIAL>	Mississauga ON
SPL		East Express Right Shoulder401(marker 343)<UNOFFICIAL>	Mississauga ON
SPL		HWY 401 WESTBOUND COLLECTOR JUST WEST OF DIXIE ROAD.<UNOFFICIAL>	Mississauga ON
WWIS			ON

Unplottable Report

Site:**Lot 7 Con 2 Peel ON****Database:****AAGR**

Type:
Region/County: Wellington
Township: Peel
Concession: 2
Lot: 7
Size (ha):
Landuse:
Comments: naturally rehabilitated

Site:**FITZWOOD INVESTMENTS LTD. PH. 2 N.
CREDITVALLEY MEADOWS PH. 2 MISSISSAUGA CITY ON****Database:****CA**

Certificate #: 3-1870-88-
Application Year: 88
Issue Date: 10/14/1988
Approval Type: Municipal sewage
Status: Approved
Application Type:
Client Name:
Client Address:
Client City:
Client Postal Code:
Project Description:
Contaminants:
Emission Control:

Site:**FITZWOOD INVESTMENTS LIMITED
CREDITVALLEY PH.4 E/DONWAY DR. MISSISSAUGA CITY ON****Database:****CA**

Certificate #: 7-1212-97-
Application Year: 97
Issue Date: 11/21/1997
Approval Type: Municipal water
Status: Approved
Application Type:
Client Name:
Client Address:
Client City:
Client Postal Code:
Project Description:
Contaminants:
Emission Control:

Site:**FITZWOOD INVESTMENTS LIMITED
CREDITVALLEY PH.4 E/DONWAY DR. MISSISSAUGA CITY ON****Database:****CA**

Certificate #: 3-1668-97-
Application Year: 97
Issue Date: 11/21/1997
Approval Type: Municipal sewage
Status: Approved
Application Type:
Client Name:
Client Address:
Client City:
Client Postal Code:
Project Description:
Contaminants:
Emission Control:

Site: **REG. MUN. OF PEEL**
SECOND LINE W. MISSISSAUGA ON

Database:
CA

Site: **FITZWOOD INVESTMENTS LTD.-CONC. 3 W.H.S**
O'KEEFE CRT./PT. LOT 8 MISSISSAUGA CITY ON

Database:
CA

Certificate #: 7-1532-91-
Application Year: 91
Issue Date: 12/30/1991
Approval Type: Municipal water
Status: Approved
Application Type:
Client Name:
Client Address:
Client City:
Client Postal Code:
Project Description:
Contaminants:
Emission Control:

Site: **Arrowsmith Village- Phase 7 (21T-99014M)**
Part of Lot 8, Concession 2, WHS Mississauga ON

Database:
CA

Certificate #: 5744-4TWRTH
Application Year: 01
Issue Date: 2/16/01
Approval Type: Municipal & Private sewage
Status: Approved
Application Type: New Certificate of Approval
Client Name: 968908 Ontario Inc.
Client Address: 100 Strada Dr., Woodbridge
Client City: VAUGHAN
Client Postal Code: L4L 5V7
Project Description: Storm and Sanitary Sewers to be constructed on Fable Crescent and Opera Glass Crescent
Contaminants:
Emission Control:

Site: **Arrowsmith Village- Phase 7 (21T-99014M)**
Part of Lot 8, Concession 2, WHS Mississauga ON

Database:
CA

Certificate #: 5120-4TWSJT

Application Year: 01
Issue Date: 2/16/01
Approval Type: Municipal & Private water
Status: Approved
Application Type: New Certificate of Approval
Client Name: 968908 Ontario Inc.
Client Address: 100 Strada Dr., Woodbridge
Client City: VAUGHAN
Client Postal Code: L4L 5V7
Project Description: Watermains to be constructed on Fable Crescent and Opera Glass Crescent.
Contaminants:
Emission Control:

Site: **Pt. Lot 8, Con. 2 MISSISSAUGA ON** **Database:**
CA

Certificate #: 2631-4ETLBN
Application Year: 99
Issue Date: 12/22/99
Approval Type: Municipal & Private sewage
Status: Approved
Application Type: New Certificate of Approval
Client Name: 745019 Ontario Inc.
Client Address: 1080 Fewster Dr.
Client City: MISSISSAUGA
Client Postal Code: L4W 2T2
Project Description: Storm & Sanitary Sewers
Contaminants:
Emission Control:

Site: **Part of Lot 9 and 10, Concession 2 Mississauga ON** **Database:**
CA

Certificate #: 0200-4QQLCB
Application Year: 00
Issue Date: 11/6/00
Approval Type: Municipal & Private sewage
Status: Approved
Application Type: New Certificate of Approval
Client Name: 919848 Ontario Inc
Client Address: 46 Ashbridge Circle
Client City: Woodbridge
Client Postal Code: L4L 3R5
Project Description: Construction of Storm and Sanitary sewers in the City of Mississauga
Contaminants:
Emission Control:

Site: **FITZWOOD INVESTMENTS LIMITED PH. II S.** **Database:**
BIDWELL TRAIL CREDIT VALLEY MISSISSAUGA CITY ON **CA**

Certificate #: 7-0685-89-
Application Year: 89
Issue Date: 5/8/1989
Approval Type: Municipal water
Status: Approved
Application Type:
Client Name:
Client Address:

Client City:
Client Postal Code:
Project Description:
Contaminants:
Emission Control:

Site: **FITZWOOD INVESTMENTS LIMITED**
CREDITVALLEY MEADOWS PH. 2 MISSISSAUGA CITY ON

Database:
CA

Certificate #: 7-1597-88-
Application Year: 88
Issue Date: 10/14/1988
Approval Type: Municipal water
Status: Approved
Application Type:
Client Name:
Client Address:
Client City:
Client Postal Code:
Project Description:
Contaminants:
Emission Control:

Site: **REG.MUN.OF PEEL**
SECOND LINE W. MISSISSAUGA ON

Database:
CA

Site: **FITZWOOD INVESTMENTS LTD. - PT. LOT 8**
O'KEEFE CRT.-CONC. 3 W.H.S. MISSISSAUGA CITY ON

Database:
CA

Certificate #: 3-1886-91-
Application Year: 91
Issue Date: 12/30/1991
Approval Type: Municipal sewage
Status: Approved
Application Type:
Client Name:
Client Address:
Client City:
Client Postal Code:
Project Description:
Contaminants:
Emission Control:

Site: **Brookfield Lepage Johnson Controls**
HWY 401 Info Center Mississauga ON

Database:
GEN

SIC Code:
SIC Description:
Generator #: ON4812388
Approval Yrs: 04

Site: **Credit Valley Golf and Country Club**
Lot 7, Concession 2 Mississauga ON

Database:
PTTW

Year: 2006
EBR Registry No.: IA06E0408
Ministry Ref. No.: 8531-6N5QPZ
Type: Instrument Decision
Instrument Type: Permit to take water - OWRA s. 34
Proposal Date:
Location: Lot 7, Concession 2 Mississauga Ontario
Proponent Address: Lot 7, Concession 2 Mississauga Ontario

Site: **Credit Valley Golf and Country Club**
Lot 7, Concession 2 Mississauga ON

Database:
PTTW

Year: 2006
EBR Registry No.: IA06E0155
Ministry Ref. No.: 5628-6LMRZ4
Type: Instrument Decision
Instrument Type: Permit to take water - OWRA s. 34
Proposal Date:
Location: Lot 7, Concession 2 Mississauga Ontario
Proponent Address: Lot 7, Concession 2 Mississauga Ontario

Site: **2nd Line, just south of Steeles Mississauga ON**

Database:
SPL

Site: **SHELL CANADA PRODUCTS LTD.**
2ND LINE WEST RR #6 MISSISSAUGA CITY ON

Database:
SPL

Ref No.: 13526
Incident Dt: 1/7/1989
MOE Reported Dt: 1/7/1989
Contaminant Name:
Contaminant Quantity:
Incident Summary: HOME HEATING DEALER
Incident Cause: WASTEWATER DISCHARGE TO WATERCOURSE
Incident Reason: NEGLIGENCE (APPARENT)
Nature of Impact:
Receiving Medium: LAND
Environmental Impact:

Site: **Hwy 401 Ebound, W of Hwy Mississauga Rd. Mississauga ON**

Database:
SPL

Ref No.: 8675-7QNJQ5
Incident Dt:
MOE Reported Dt: 3/31/2009
Contaminant Name: MILK PRODUCT
Contaminant Quantity: 22 L
Incident Summary: TT: 5 gallons milk to hwy lanes, cleaned
Incident Cause: Other Transport Accident
Incident Reason: Other - Reason not otherwise defined
Nature of Impact: Other Impact(s)
Receiving Medium:
Environmental Impact: Not Anticipated

Site: **401E between Mavis and Hurontario Mississauga ON** **Database:** **SPL**

Ref No.: 2825-8659FK
Incident Dt:
MOE Reported Dt: 6/5/2010
Contaminant Name: DIESEL FUEL
Contaminant Quantity: 500 L
Incident Summary: MVA: 401E/Mavis Rd, diesel to highway.
Incident Cause:
Incident Reason:
Nature of Impact:
Receiving Medium:
Environmental Impact:

Site: **Ontario Provincial Police** **Database:**
Hwy 401<UNOFFICIAL> Mississauga ON **SPL**

Ref No.: 1808-83P9UJ
Incident Dt:
MOE Reported Dt: 3/19/2010
Contaminant Name: DIESEL FUEL
Contaminant Quantity: 70 L
Incident Summary: Jackknifed TT on hwy 401 E near the 403, diesel to culvert
Incident Cause: Other Transport Accident
Incident Reason: Spill
Nature of Impact: Soil Contamination
Receiving Medium:
Environmental Impact: Confirmed

Site: **Hwy 401, just east of Mississauga Rd. Mississauga ON** **Database:**
SPL

Ref No.: 7251-5P5LVE
Incident Dt: 7/4/2003
MOE Reported Dt: 7/4/2003
Contaminant Name: DIESEL FUEL
Contaminant Quantity: 80 L
Incident Summary: 20 gal to Hwy 401/Mississauga Rd.
Incident Cause:
Incident Reason:
Nature of Impact: Soil Contamination
Receiving Medium: Land
Environmental Impact: Possible

Site: **Hwy 401 E<UNOFFICIAL> Mississauga ON** **Database:**
SPL

Ref No.: 8230-7DPMZC
Incident Dt:
MOE Reported Dt: 4/14/2008
Contaminant Name: DIESEL FUEL
Contaminant Quantity: 85 L
Incident Summary: Hwy 401 E- Transport truck/100L dsl to grd
Incident Cause: Other Transport Accident
Incident Reason: Unknown - Reason not determined
Nature of Impact: Human Health/Safety; Other Impact(s); Soil Contamination
Receiving Medium:

Environmental Impact: Confirmed

Site: PRIVATE OWNER
HWY 401 EASTBOUND, EAST OF HWY 10 MISSISSAUGA CITY ON

Database:
SPL

Ref No.: 239524
Incident Dt: 9/15/2002
MOE Reported Dt: 9/15/2002
Contaminant Name:
Contaminant Quantity:
Incident Summary: HWY 401 EASTBOUND, CAR HAS LOST FUEL TANK ON SIDE OF ROAD
Incident Cause: OTHER CONTAINER LEAK
Incident Reason: EQUIPMENT FAILURE
Nature of Impact: Soil contamination
Receiving Medium: LAND
Environmental Impact: POSSIBLE

Site: TRANSPORT TRUCK
HWY 401 EASTBOUND ON SOUTH SIDE SHOULDER JUST EAST OF HWY 10 MISSISSAUGA CITY ON

Database:
SPL

Ref No.: 99813
Incident Dt: 5/12/1994
MOE Reported Dt: 5/12/1994
Contaminant Name:
Contaminant Quantity:
Incident Summary: TRANSPORT TRUCK- 450 L DIESEL TO ROAD, F.D.,MTO ON SCENE, CONTAINED
Incident Cause: OTHER CONTAINER LEAK
Incident Reason: ERROR
Nature of Impact: Soil contamination
Receiving Medium: LAND
Environmental Impact: CONFIRMED

Site: TRANSPORT TRUCK
HWY 401 EASTBOUND JUST EAST OF MISSISSAUGA ROAD. MISSISSAUGA CITY ON

Database:
SPL

Ref No.: 147446
Incident Dt: 10/5/1997
MOE Reported Dt: 10/5/1997
Contaminant Name:
Contaminant Quantity:
Incident Summary: CATEAU C.Q. TRANSPORT - 100 L DIESEL FUEL TO C/B AND MEDIAN. OPP, FD, MTO.
Incident Cause: OTHER TRANSPORTATION ACCIDENT
Incident Reason: UNKNOWN
Nature of Impact: Water course or lake
Receiving Medium: LAND
Environmental Impact: POSSIBLE

Site: PRIVATE OWNER
W/B 401, CENTRE CORE, RIGHT SHOULDER CATCH BASIN MISSISSAUGA CITY ON

Database:
SPL

Ref No.: 157981
Incident Dt: 7/15/1998
MOE Reported Dt: 7/15/1998
Contaminant Name:
Contaminant Quantity:
Incident Summary: PRIVATE OWNER-45 L GASO- LINE ONTO HWY,CAR ON FIREFOAM USED BY FD, MTO.

Incident Cause: OTHER TRANSPORTATION ACCIDENT
Incident Reason: FIRE/EXPLOSION
Nature of Impact: Water course or lake
Receiving Medium: LAND
Environmental Impact: NOT ANTICIPATED

Site: **ASHLAND CHEMICALS**
HWY 401 MISSISSAUGA CITY ON

Database:
SPL

Ref No.: 20358
Incident Dt: 6/1/1989
MOE Reported Dt: 6/5/1989
Contaminant Name:
Contaminant Quantity:
Incident Summary: BACKENTRY - ASHLAND CHEM METHYLETHYL CHLORIDE FROM RUPTURED DRUM (AMT U/K)
Incident Cause: OTHER CONTAINER LEAK
Incident Reason: OTHER
Nature of Impact:
Receiving Medium: AIR
Environmental Impact: NOT ANTICIPATED

Site:
Mississauga ON

Database:
SPL

Ref No.: 6828-6RPGBA
Incident Dt: 7/14/2006
MOE Reported Dt: 7/14/2006
Contaminant Name: DIESEL FUEL
Contaminant Quantity: 90 L
Incident Summary: Hwy 401 westbound, E of Dixie, TT fire and diesel to CBs
Incident Cause:
Incident Reason:
Nature of Impact: Surface Water Pollution
Receiving Medium: Water
Environmental Impact: Confirmed

Site:
Hwy. 401, east-bound collector lane just west of Dixie Rd. <UNOFFICIAL> Mississauga ON

Database:
SPL

Ref No.: 6374-6EGU6A
Incident Dt: 7/20/2005
MOE Reported Dt: 7/20/2005
Contaminant Name: DIESEL FUEL
Contaminant Quantity:
Incident Summary: Transport truck (n.o.s.) - diesel fuel to Hwy. 401.
Incident Cause: Container Leak (Fuel Tank Barrels)
Incident Reason: Equipment Failure
Nature of Impact:
Receiving Medium: Land
Environmental Impact: Not Anticipated

Site:
WESTBOUND LANES OF HIGHWAY 401 JUST EAST OF HURONTARIO, HIGHWAY 10<UNOFFICIAL> Mississauga ON

Database:
SPL

Ref No.: 8621-667JXJ
Incident Dt: 10/28/2004
MOE Reported Dt: 10/28/2004
Contaminant Name: DIESEL FUEL
Contaminant Quantity: 150 L
Incident Summary: Hwy 401 Mississauga: 100 L of dsl to storm sewer.
Incident Cause: Other Transport Accident
Incident Reason: Other - Reason not otherwise defined
Nature of Impact: Soil Contamination; Surface Water Pollution
Receiving Medium: Land & Water
Environmental Impact: Possible

Site: **East Express Right Shoulder401(marker 343)<UNOFFICIAL> Mississauga ON** **Database:** **SPL**

Ref No.: 5250-6JXB3M
Incident Dt: 12/9/2005
MOE Reported Dt: 12/10/2005
Contaminant Name: DIESEL FUEL
Contaminant Quantity:
Incident Summary: EGR: Original Doc-0510-6JWEM4
Incident Cause:
Incident Reason:
Nature of Impact: Soil Contamination
Receiving Medium: Land
Environmental Impact: Possible

Site: **HWY 401 WESTBOUND COLLECTOR JUST WEST OF DIXIE ROAD.<UNOFFICIAL> Mississauga ON** **Database:** **SPL**

Ref No.: 0784-5HFA89
Incident Dt: 1/3/2003
MOE Reported Dt: 1/3/2003
Contaminant Name: DIESEL FUEL
Contaminant Quantity: 50 L
Incident Summary: Transport Truck-50 L diesel to Roadway.
Incident Cause:
Incident Reason:
Nature of Impact:
Receiving Medium: Land
Environmental Impact:

Site: **ON** **Database:** **WWIS**

Well ID:	4909637	Lot:	008
Concession:	02	Concession	
		Name:	
County:	PEEL	Municipality:	MISSISSAUGA
Easting Nad83:		Northing	
		Nad83:	
Zone:		Utm Reliability:	
Primary Water Use:		Construction	13-JAN-05
		Date:	
Sec. Water Use:		Well Depth:	
Pump Rate:		Static Water	
		Level:	
Flow Rate:		Clear/Cloudy:	

Specific Capacity:

Construction Method: Boring

Elevation (m):

Depth to Bedrock:

Water Type:

Final Well

Status:

Flowing (y/n):

Elevation

Reliability:

Overburden/Be

drock:

Casing

Material:

Observation Wells

No formation data

PLASTIC

Appendix: Database Descriptions

*Ecolog Environmental Risk Information Services Ltd can search the following databases. The extent of Historical information varies with each database and current information is determined by what is publicly available to Ecolog ERIS at the time of update. **Note:** Databases denoted with " * " indicates that the database will no longer be updated. See the individual database description for more information.*

Abandoned Aggregate Inventory:

Provincial [AAGR](#)

The MAAP Program maintains a database of all abandoned pits and quarries. Please note that the database is only referenced by lot and concession and city/town location. The database provides information regarding the location, type, size, land use, status and general comments.*

*Government Publication Date: Sept 2002**

Aggregate Inventory:

Provincial [AGR](#)

The Ontario Ministry of Natural Resources maintains a database of all active pits and quarries. The database provides information regarding the registered owner/operator, location name, operation type, approval type, and maximum annual tonnage.

Government Publication Date: Up to Aug 2012

Abandoned Mine Information System:

Provincial [AMIS](#)

The Abandoned Mines Information System contains data on known abandoned and inactive mines located on both Crown and privately held lands. The information was provided by the Ministry of Northern Development and Mines (MNDM), with the following disclaimer: "the database provided has been compiled from various sources, and the Ministry of Northern Development and Mines makes no representation and takes no responsibility that such information is accurate, current or complete". Reported information includes official mine name, status, background information, mine start/end date, primary commodity, mine features, hazards and remediation.

Government Publication Date: 1800-Jan 2014

Anderson's Waste Disposal Sites:

Private [ANDR](#)

The information provided in this database was collected by examining various historical documents which aimed to characterize the likely position of former waste disposal sites from 1860 to present. The research initiative behind the creation of this database was to identify those sites that are missing from the Ontario MOE Waste Disposal Site Inventory, as well as to provide revisions and corrections to the positions and descriptions of sites currently listed in the MOE inventory. In addition to historic waste disposal facilities, the database also identifies certain auto wreckers and scrap yards that have been extrapolated from documentary sources. Please note that the data is not warranted to be complete, exhaustive or authoritative. The information was collected for research purposes only.

Government Publication Date: 1860s-Present

Automobile Wrecking & Supplies:

Private [AUWR](#)

This database provides an inventory of all known locations that are involved in the scrap metal, automobile wrecking/recycling, and automobile parts & supplies industry. Information is provided on the company name, location and business type.

Government Publication Date: 2001-Jun 2010

Borehole:Provincial **BORE**

A borehole is the generalized term for any narrow shaft drilled in the ground, either vertically or horizontally. The information here includes geotechnical investigations or environmental site assessments, mineral exploration, or as a pilot hole for installing piers or underground utilities. Information is from many sources such as the Ministry of Transportation (MTO) boreholes from engineering reports and projects from the 1950 to 1990's in Southern Ontario. Boreholes from the Ontario Geological Survey (OGS) including The Urban Geology Analysis Information System (UGAIS) and the York Peel Durham Toronto (YPDT) database of the Conservation Authority Moraine Coalition. This database will include fields such as location, stratigraphy, depth, elevation, year drilled, etc. For all water well data or oil and gas well data for Ontario please refer to WWIS and OOGW.

Government Publication Date: 1875-Aug 2011

Certificates of Approval:Provincial **CA**

This database contains the following types of approvals: Air & Noise, Industrial Sewage, Municipal & Private Sewage, Waste Management Systems and Renewable Energy Approvals. The MOE in Ontario states that any facility that releases emissions to the atmosphere, discharges contaminants to ground or surface water, provides potable water supplies, or stores, transports or disposes of waste, must have a Certificate of Approval before it can operate lawfully. Fields include approval number, business name, address, approval date, approval type and status. This database will no longer be updated, as CofA's have been replaced by either Environmental Activity and Sector Registry (EASR) or Environmental Compliance Approval (ECA). Please refer to those individual databases for any information after Oct.31, 2011.

*Government Publication Date: 1985-Oct 30, 2011**

Commercial Fuel Oil Tanks:Provincial **CFOT**

Since May 2002, Ontario developed a new act where it became mandatory for fuel oil tanks to be registered with Technical Standards & Safety Authority (TSSA). This data would include all commercial underground fuel oil tanks in Ontario with fields such as location, registration number, tank material, age of tank and tank size.

Government Publication Date: 1948-Apr 2013

Chemical Register:Private **CHEM**

This database includes information from both a one time study conducted in 1992 and private source and is a listing of facilities that manufacture or distribute chemicals. The production of these chemical substances may involve one or more chemical reactions and/or chemical separation processes (i.e. fractionation, solvent extraction, crystallization, etc.).

Government Publication Date: 1992, 1999-Jun 2010

Inventory of Coal Gasification Plants and Coal Tar Sites:Provincial **COAL**

This inventory includes both the "Inventory of Coal Gasification Plant Waste Sites in Ontario-April 1987" and the Inventory of Industrial Sites Producing or Using Coal Tar and Related Tars in Ontario-November 1988) collected by the MOE. It identifies industrial sites that produced and continue to produce or use coal tar and other related tars. Detailed information is available and includes: facility type, size, land use, information on adjoining properties, soil condition, site operators/occupants, site description, potential environmental impacts and historic maps available. This was a one-time inventory.*

*Government Publication Date: Apr 1987 and Nov 1988**

Compliance and Convictions:Provincial **CONV**

This database summarizes the fines and convictions handed down by the Ontario courts beginning in 1989. Companies and individuals named here have been found guilty of environmental offenses in Ontario courts of law.

Government Publication Date: 1989-Feb 2014

Certificates of Property Use:Provincial **CPU**

This is a subset taken from Ontario's Environmental Registry (EBR) database. It will include all CPU's on the registry such as (EPA s. 168.6) - Certificate of Property Use.

Government Publication Date: 1994-Apr 2014

Drill Hole Database:Provincial [DRL](#)

The Ontario Drill Hole Database contains information on more than 113,000 percussion, overburden, sonic and diamond drill holes from assessment files on record with the department of Mines and Minerals. Please note that limited data is available for southern Ontario, as it was the last area to be completed. The database was created when surveys submitted to the Ministry were converted in the Assessment File Research Image Database (AFRI) project. However, the degree of accuracy (coordinates) as to the exact location of drill holes is dependent upon the source document submitted to the MNM. Levels of accuracy used to locate holes are: centering on the mining claim; a sketch of the mining claim; a 1:50,000 map; a detailed company map; or from submitted a "Report of Work".

Government Publication Date: 1886-Jan 2014

Environmental Activity and Sector Registry:Provincial [EASR](#)

On October 31, 2011, a smarter, faster environmental approvals system came into effect in Ontario. The EASR allows businesses to register certain activities with the ministry, rather than apply for an approval. The registry is available for common systems and processes, to which preset rules of operation can be applied. The EASR is currently available for: heating systems, standby power systems and automotive refinishing. Businesses whose activities aren't subject to the EASR may apply for an ECA (Environmental Compliance Approval), Please see our ECA database.

Government Publication Date: Oct 31 2011-Apr 2014

Environmental Registry:Provincial [EBR](#)

The Environmental Registry lists proposals, decisions and exceptions regarding policies, Acts, instruments, or regulations that could significantly affect the environment. Through the Registry, thirteen provincial ministries notify the public of upcoming proposals and invite their comments. For example, if a local business is requesting a permit, license, or certificate of approval to release substances into the air or water; these are notified on the registry. Data includes: Approval for discharge into the natural environment other than water (i.e. Air) - EPA s. 9, Approval for sewage works - OWRA s. 53(1), and EPA s. 27 - Approval for a waste disposal site. For information regarding Permit to Take Water (PTTW), Certificate of Property Use (CPU) and (ORD) Orders please refer to those individual databases.

Government Publication Date: 1994-Apr 2014

Environmental Compliance Approval:Provincial [ECA](#)

On October 31, 2011, a smarter, faster environmental approvals system came into effect in Ontario. In the past, a business had to apply for multiple approvals (known as certificates of approval) for individual processes and pieces of equipment. Today, a business either registers itself, or applies for a single approval, depending on the types of activities it conducts. Businesses whose activities aren't subject to the EASR may apply for an ECA. A single ECA addresses all of a business's emissions, discharges and wastes. Separate approvals for air, noise and waste are no longer required. This database will also include Renewable Energy Approvals. For CofA's prior to Nov 1st, 2011, please refer to the CA database. For all Waste Disposal Sites please refer to the WDS database.

Government Publication Date: Oct 31, 2011-Feb 2014

Environmental Effects Monitoring:Federal [EEM](#)

The Environmental Effects Monitoring program assesses the effects of effluent from industrial or other sources on fish, fish habitat and human usage of fisheries resources. Since 1992, pulp and paper mills have been required to conduct EEM studies under the Pulp and Paper Effluent Regulations. This database provides information on the mill name, geographical location and sub-lethal toxicity data.

*Government Publication Date: 1992-2007**

ERIS Historical Searches:Private [EHS](#)

EcoLog ERIS has compiled a database of all environmental risk reports completed since March 1999. Available fields for this database include: site location, date of report, type of report, and search radius. As per all other databases, the ERIS database can be referenced on both the map and "Statistical Profile" page.

Government Publication Date: 1999-Mar 2013

Environmental Issues Inventory System:Federal [EIIS](#)

The Environmental Issues Inventory System was developed through the implementation of the Environmental Issues and Remediation Plan. This plan was established to determine the location and severity of contaminated sites on inhabited First Nation reserves, and where necessary, to remediate those that posed a risk to health and safety; and to prevent future environmental problems. The EIIS provides information on the reserve under investigation, inventory number, name of site, environmental issue, site action (Remediation, Site Assessment), and date investigation completed.

*Government Publication Date: 1992-2001**

List of TSSA Expired Facilities:Provincial [EXP](#)

This is a list of all expired facilities that fall under the TSSA (TSSA Act & Safety Regulations), including the six regulations that exist under the Fuels Safety Division. It will include facilities such as private fuel outlets, bulk plants, fuel oil tanks, gasoline stations, marinas, propane filling stations, liquid fuel tanks, piping systems, etc. These tanks have been removed and automatically fall under the expired facilities inventory held by TSSA.

Government Publication Date: Current to May 2013

Federal Convictions:Federal [FCON](#)

Environment Canada maintains a database referred to as the "Environmental Registry" that details prosecutions under the Canadian Environmental Protection Act (CEPA) and the Fisheries Act (FA). Information is provided on the company name, location, charge date, offence and penalty.

*Government Publication Date: 1988-Jun 2007**

Contaminated Sites on Federal Land:Federal [FCS](#)

The Federal Contaminated Sites Inventory includes information on all known federal contaminated sites under the custodianship of departments, agencies and consolidated Crown corporations as well as those that are being or have been investigated to determine whether they have contamination arising from past use that could pose a risk to human health or the environment. The inventory also includes non-federal contaminated sites for which the Government of Canada has accepted some or all financial responsibility. It does not include sites where contamination has been caused by, and which are under the control of, enterprise Crown corporations, private individuals, firms or other levels of government.

Government Publication Date: June 2000-Jan 2014

Fisheries & Oceans Fuel Tanks:Federal [FOFT](#)

Fisheries & Oceans Canada maintains an inventory of all aboveground & underground fuel storage tanks located on Fisheries & Oceans property or controlled by DFO. Our inventory provides information on the site name, location, tank owner, tank operator, facility type, storage tank location, tank contents & capacity, and date of tank installation.

Government Publication Date: 1964-Sept 2003

Fuel Storage Tank:Provincial [FST](#)

The Technical Standards & Safety Authority (TSSA), under the Technical Standards & Safety Act of 2000 maintains a database of registered private and retail fuel storage tanks in Ontario with fields such as location, tank status, license date, tank type, tank capacity, fuel type, installation year and facility type.

Government Publication Date: 2010-May 2013

Fuel Storage Tank - Historic:Provincial [FSTH](#)

The Technical Standards & Safety Authority (TSSA), under the Technical Standards & Safety Act of 2000 maintains a database of registered private and retail fuel storage tanks in Ontario with fields such as location, tank status, license date, tank type, tank capacity, fuel type, installation year and facility type.

*Government Publication Date: Pre-Jan 2010**

Ontario Regulation 347 Waste Generators Summary:

Provincial GEN

Regulation 347 of the Ontario EPA defines a waste generation site as any site, equipment and/or operation involved in the production, collection, handling and/or storage of regulated wastes. A generator of regulated waste is required to register the waste generation site and each waste produced, collected, handled, or stored at the site. This database contains the registration number, company name and address of registered generators including the types of hazardous wastes generated. It includes data on waste generating facilities such as: drycleaners, waste treatment and disposal facilities, machine shops, electric power distribution etc. This information is a summary of all years from 1986 including the most currently available data. Some records may contain, within the company name, the phrase "See & Use..." followed by a series of letters and numbers. This occurs when one company is amalgamated with or taken over by another registered company. The number listed as "See & Use", refers to the new ownership and the other identification number refers to the original ownership. This phrase serves as a link between the 2 companies until operations have been fully transferred.

*Government Publication Date: 1986-Apr 2014***TSSA Historic Incidents:**

Provincial HINC

This database will cover all incidences recorded by TSSA with their older system, before they moved to their new management system. TSSA's Fuels Safety Program administers the Technical Standards & Safety Act 2000, providing fuel-related safety services associated with the safe transportation, storage, handling and use of fuels such as gasoline, diesel, propane, natural gas and hydrogen. Under this Act, TSSA regulates fuel suppliers, storage facilities, transport trucks, pipelines, contractors and equipment or appliances that use fuels. The TSSA works to protect the public, the environment and property from fuel-related hazards such as spills, fires and explosions. This database will include spills and leaks from pipelines, diesel, fuel oil, gasoline, natural gas, propane and hydrogen recorded by the TSSA.

*Government Publication Date: 2006-June 2009***Indian & Northern Affairs Fuel Tanks:**

Federal IAFI

The Department of Indian & Northern Affairs Canada (INAC) maintains an inventory of all aboveground & underground fuel storage tanks located on both federal and crown land. Our inventory provides information on the reserve name, location, facility type, site/facility name, tank type, material & ID number, tank contents & capacity, and date of tank installation.

*Government Publication Date: 1950-Aug 2003****TSSA Incidents:**

Provincial INC

TSSA's Fuels Safety Program administers the Technical Standards & Safety Act 2000, providing fuel-related safety services associated with the safe transportation, storage, handling and use of fuels such as gasoline, diesel, propane, natural gas and hydrogen. Under this Act, TSSA regulates fuel suppliers, storage facilities, transport trucks, pipelines, contractors and equipment or appliances that use fuels. Includes incidents from fuel-related hazards such as spills, fires and explosions. This database will include spills and leaks from diesel, fuel oil, gasoline, natural gas, propane and hydrogen recorded by the TSSA.

*Government Publication Date: June 2009-Apr 2013***Landfill Inventory Management Ontario:**

Provincial LIMO

The Landfill Inventory Management Ontario (LIMO) database is updated every year, as the ministry compiles new and updated information. The inventory will include small and large landfills. Additionally, each year the ministry will request operators of the larger landfills complete a landfill data collection form that will be used to update LIMO and will include the following information from the previous operating year. This will include additional information such as estimated amount of total waste received, landfill capacity, estimated total remaining landfill capacity, fill rates, engineering designs, reporting and monitoring details, size of location, service area, approved waste types, leachate of site treatment, contaminant attenuation zone and more. The small landfills will include information such as site owner, site location and certificate of approval # and status.

Government Publication Date: 2012

Canadian Mine Locations:Private [MINE](#)

This information is collected from the Canadian & American Mines Handbook. The Mines database is a national database that provides over 290 listings on mines (listed as public companies) dealing primarily with precious metals and hard rocks. Listed are mines that are currently in operation, closed, suspended, or are still being developed (advanced projects). Their locations are provided as geographic coordinates (x, y and/or longitude, latitude). As of 2002, data pertaining to Canadian smelters and refineries has been appended to this database.

Government Publication Date: 1998-2009

Mineral Occurrences:Provincial [MNR](#)

In the early 70's, the Ministry of Northern Development and Mines created an inventory of approximately 19,000 mineral occurrences in Ontario, in regard to metallic and industrial minerals, as well as some information on building stones and aggregate deposits. Please note that the "Horizontal Positional Accuracy" is approximately +/- 200 m. Many reference elements for each record were derived from field sketches using pace or chain/tape measurements against claim posts or topographic features in the area. The primary limiting factor for the level of positional accuracy is the scale of the source material. The testing of horizontal accuracy of the source materials was accomplished by comparing the planimetric (X and Y) coordinates of that point with the coordinates of the same point as defined from a source of higher accuracy.

Government Publication Date: 1846-Apr 2013

National Analysis of Trends in Emergencies System (NATES):Federal [NATE](#)

In 1974 Environment Canada established the National Analysis of Trends in Emergencies System (NATES) database, for the voluntary reporting of significant spill incidents. The data was to be used to assist in directing the work of the emergencies program. NATES ran from 1974 to 1994. Extensive information is available within this database including company names, place where the spill occurred, date of spill, cause, reason and source of spill, damage incurred, and amount, concentration, and volume of materials released.

*Government Publication Date: 1974-1994**

Non-Compliance Reports:Provincial [NCPL](#)

The Ministry of the Environment provides information about non-compliant discharges of contaminants to air and water that exceed legal allowable limits, from regulated industrial and municipal facilities. A reported non-compliance failure may be in regard to a Control Order, Certificate of Approval, Sectoral Regulation or specific regulation/act.

Government Publication Date: 1994-2012

National Defence & Canadian Forces Fuel Tanks:Federal [NDFT](#)

The Department of National Defence and the Canadian Forces maintains an inventory of all aboveground & underground fuel storage tanks located on DND lands. Our inventory provides information on the base name, location, tank type & capacity, tank contents, tank class, date of tank installation, date tank last used, and status of tank as of May 2001. This database will no longer be updated due to the new National Security protocols which have prohibited any release of this database.

*Government Publication Date: Up to May 2001**

National Defence & Canadian Forces Spills:Federal [NDSP](#)

The Department of National Defence and the Canadian Forces maintains an inventory of spills to land and water. All spill sites have been classified under the "Transportation of Dangerous Goods Act - 1992". Our inventory provides information on the facility name, location, spill ID #, spill date, type of spill, as well as the quantity of substance spilled & recovered.

Government Publication Date: Mar 1999-Aug 2010

National Defence & Canadian Forces Waste Disposal Sites:Federal [NDWD](#)

The Department of National Defence and the Canadian Forces maintains an inventory of waste disposal sites located on DND lands. Where available, our inventory provides information on the base name, location, type of waste received, area of site, depth of site, year site opened/closed and status.

*Government Publication Date: 2001-Apr 2007**

National Environmental Emergencies System (NEES):

Federal

NEES

In 2000, the Emergencies program implemented NEES, a reporting system for spills of hazardous substances. For the most part, this system only captured data from the Atlantic Provinces, some from Quebec and Ontario and a portion from British Columbia. Data for Alberta, Saskatchewan, Manitoba and the Territories was not captured. However, NEES is also a repository for all previous Environment Canada spill datasets. NEES is composed of the historic datasets ' or Trends ' which dates from approximately 1974 to present. NEES Trends is a compilation of historic databases, which were merged and includes data from NATES (National Analysis of Trends in Emergencies System), ARTS (Atlantic Regional Trends System), and NEES. In 2001, the Emergencies Program determined that variations in reporting regimes and requirements between federal and provincial agencies made national spill reporting and trend analysis difficult to achieve. As a consequence, the department has focused efforts on capturing data on spills of substances which fall under its legislative authority only (CEPA and FA). As such, the NEES database will be decommissioned in December 2004.

*Government Publication Date: 1974-2003**

National PCB Inventory:

Federal

NPCB

Environment Canada's National PCB inventory includes information on in-use PCB containing equipment in Canada including federal, provincial and private facilities. All federal out-of-service PCB containing equipment and all PCB waste owned by the federal government or by federally regulated industries such as airlines, railway companies, broadcasting companies, telephone and telecommunications companies, pipeline companies, etc. are also listed. Although it is not Environment Canada's mandate to collect data on non-federal PCB waste, the National PCB inventory includes some information on provincial and private PCB waste and storage sites. Some addresses provided may be Head Office addresses and are not necessarily the location of where the waste is being used or stored.

*Government Publication Date: 1988-2008**

National Pollutant Release Inventory:

Federal

NPRI

Environment Canada has defined the National Pollutant Release Inventory ("NPRI") as a federal government initiative designed to collect comprehensive national data regarding releases to air, water, or land, and waste transfers for recycling for more than 300 listed substances.

Government Publication Date: 1993-2011

Oil and Gas Wells:

Private

OGW

The Nickle's Energy Group (publisher of the Daily Oil Bulletin) collects information on drilling activity including operator and well statistics. The well information database includes name, location, class, status and depth. The main Nickle's database is updated on a daily basis, however, this database is updated on a monthly basis. More information is available at www.nickles.com.

Government Publication Date: 1988-Mar 2014

Ontario Oil and Gas Wells:

Provincial

OOGW

In 1998, the MNR handed over to the Ontario Oil, Gas and Salt Resources Corporation, the responsibility of maintaining a database of oil and gas wells drilled in Ontario. The OGSR Library has over 20,000+ wells in their database. Information available for all wells in the ERIS database include well owner/operator, location, permit issue date, well cap date, licence no., status, depth and the primary target (rock unit) of the well being drilled. All geology/stratigraphy table information, plus all water table information is also provide for each well record.

Government Publication Date: 1800-2013

Inventory of PCB Storage Sites:

Provincial

OPCB

The Ontario Ministry of Environment, Waste Management Branch, maintains an inventory of PCB storage sites within the province. Ontario Regulation 11/82 (Waste Management - PCB) and Regulation 347 (Generator Waste Management) under the Ontario EPA requires the registration of inactive PCB storage equipment and/or disposal sites of PCB waste with the Ontario Ministry of Environment. This database contains information on: 1) waste quantities; 2) major and minor sites storing liquid or solid waste; and 3) a waste storage inventory.

Government Publication Date: 1987-Oct 2004

Orders:Provincial [ORD](#)

This is a subset taken from Ontario's Environmental Registry (EBR) database. It will include all Orders on the registry such as (EPA s. 17) - Order for remedial work, (EPA s. 18) - Order for preventative measures, (EPA s. 43) - Order for removal of waste and restoration of site, (EPA s. 44) - Order for conformity with Act for waste disposal sites, (EPA s. 136) - Order for performance of environmental measures.

Government Publication Date: 1994-Apr 2014

Canadian Pulp and Paper:Private [PAP](#)

This information is part of the Pulp and Paper Canada Directory. The Directory provides a comprehensive listing of the locations of pulp and paper mills and the products that they produce.

Government Publication Date: 1999, 2002, 2004, 2005, 2009

Parks Canada Fuel Storage Tanks:Federal [PCFT](#)

Canadian Heritage maintains an inventory of all known fuel storage tanks operated by Parks Canada, in both National Parks and at National Historic Sites. The database details information on site name, location, tank install/removal date, capacity, fuel type, facility type, tank design and owner/operator.

*Government Publication Date: 1920-Jan 2005**

Pesticide Register:Provincial [PES](#)

The Ontario Ministry of Environment maintains a database of all manufacturers and vendors of registered pesticides.

Government Publication Date: 1988-Jun 2013

TSSA Pipeline Incidents:Provincial [PINC](#)

TSSA's Fuels Safety Program administers the Technical Standards & Safety Act 2000, providing fuel-related safety services associated with the safe transportation, storage, handling and use of fuels such as gasoline, diesel, propane, natural gas and hydrogen. Under this Act, TSSA regulates fuel suppliers, storage facilities, transport trucks, pipelines, contractors and equipment or appliances that use fuels. This database will include spills, strike and leaks from recorded by the TSSA.

Government Publication Date: June 2009-Mar 2012

Private and Retail Fuel Storage Tanks:Provincial [PRT](#)

The Fuels Safety Branch of the Ontario Ministry of Consumer and Commercial Relations maintained a database of all registered private fuel storage tanks and licensed retail fuel outlets. This database includes an inventory of locations that have gasoline, oil, waste oil, natural gas and/or propane storage tanks on their property. The MCCR no longer collects this information. This information is now collected by the Technical Standards and Safety Authority (TSSA).

*Government Publication Date: 1989-1996**

Permit to Take Water:Provincial [PTTW](#)

This is a subset taken from Ontario's Environmental Registry (EBR) database. It will include all PTTW's on the registry such as OWRA s. 34 - Permit to take water.

Government Publication Date: 1994-Apr 2014

Ontario Regulation 347 Waste Receivers Summary:Provincial [REC](#)

Part V of the Ontario Environmental Protection Act ("EPA") regulates the disposal of regulated waste through an operating waste management system or a waste disposal site operated or used pursuant to the terms and conditions of a Certificate of Approval or a Provisional Certificate of Approval. Regulation 347 of the Ontario EPA defines a waste receiving site as any site or facility to which waste is transferred by a waste carrier. A receiver of regulated waste is required to register the waste receiving facility. This database represents registered receivers of regulated wastes, identified by registration number, company name and address, and includes receivers of waste such as: landfills, incinerators, transfer stations, PCB storage sites, sludge farms and water pollution control plants. This information is a summary of all years from 1986 including the most currently available data.

Government Publication Date: 1986-2012

Record of Site Condition:

Provincial

RSC

The Record of Site Condition (RSC) is part of the Ministry of the Environment's Brownfields Environmental Site Registry. Protection from environmental cleanup orders for property owners is contingent upon documentation known as a record of site condition (RSC) being filed in the Environmental Site Registry. In order to file an RSC, the property must have been properly assessed and shown to meet the soil, sediment and groundwater standards appropriate for the use (such as residential) proposed to take place on the property. The Record of Site Condition Regulation (O. Reg. 153/04) details requirements related to site assessment and clean up.

RSCs filed after July 1, 2011 will also be included as part of the new (O.Reg. 511/09).

Government Publication Date: 1997-Sept 2001, Oct 2004-Feb 2014

Retail Fuel Storage Tanks:

Private

RST

This database includes an inventory of retail fuel outlet locations (including marinas) that have on their property gasoline, oil, waste oil, natural gas and / or propane storage tanks.

Government Publication Date: 1999-Jun 2010

Scott's Manufacturing Directory:

Private

SCT

Scott's Directories is a data bank containing information on over 200,000 manufacturers across Canada. Even though Scott's listings are voluntary, it is the most comprehensive database of Canadian manufacturers available. Information concerning a company's address, plant size, and main products are included in this database.

Government Publication Date: 1992-Mar 2011

Ontario Spills:

Provincial

SPL

This database identifies information such as location (approximate), type and quantity of contaminant, date of spill, environmental impact, cause, nature of impact, etc. Information from 1988-2002 was part of the ORIS (Occurrence Reporting Information System). The SAC (Spills Action Centre) handles all spills reported in Ontario. Regulations for spills in Ontario are part of the MOE's Environmental Protection Act, Part X.

Government Publication Date: 1988-Jun 2013

Wastewater Discharger Registration Database:

Provincial

SRDS

Information under this heading is combination of the following 2 programs. The Municipal/Industrial Strategy for Abatement (MISA) division of the Ontario Ministry of Environment maintained a database of all direct dischargers of toxic pollutants within nine sectors including: Electric Power Generation; Mining; Petroleum Refining; Organic Chemicals; Inorganic Chemicals; Pulp & Paper; Metal Casting; Iron & Steel; and Quarries. All sampling information is now collected and stored within the Sample Result Data Store (SRDS).

Government Publication Date: 1990-2011

Anderson's Storage Tanks:

Private

TANK

The information provided in this database was collected by examining various historical documents, which identified the location of former storage tanks, containing substances such as fuel, water, gas, oil, and other various types of miscellaneous products. Information is available in regard to business operating at tank site, tank location, permit year, permit & installation type, no. of tanks installed & configuration and tank capacity. Data contained within this database pertains only to the city of Toronto and is not warranted to be complete, exhaustive or authoritative. The information was collected for research purposes only.

*Government Publication Date: 1915-1953**

Transport Canada Fuel Storage Tanks:

Federal

TCFT

With the provinces of BC, MB, NB, NF, ON, PE, and QC; Transport Canada currently owns and operates 90 fuel storage tanks. Our inventory provides information on the site name, location, tank age, capacity and fuel type.

Government Publication Date: 1970-Mar 2007

TSSA Variances for Abandonment of Underground Storage Tanks:

Provincial

VAR

The TSSA, Under the Liquid Fuels Handling Code and the Fuel Oil Code, all underground storage tanks must be removed within two years of disuse. If removal of a tank is not feasible, you may apply to seek a variance from this code requirement. This is a list of all variances granted for abandoned tanks.

Waste Disposal Sites - MOE CA Inventory:

Provincial [WDS](#)

The Ontario Ministry of Environment, Waste Management Branch, maintains an inventory of known open (active or inactive) and closed disposal sites in the Province of Ontario. Active sites maintain a Certificate of Approval, are approved to receive and are receiving waste. Inactive sites maintain Certificate(s) of Approval but are not receiving waste. Closed sites are not receiving waste. The data contained within this database was compiled from the MOE's Certificate of Approval database. Locations of these sites may be cross-referenced to the Anderson database described under ERIS's Private Source Database section, by the CA number. All new Environmental Compliance Approvals handed out after Oct 31, 2011 for Waste Disposal Sites will still be found in this database.

Government Publication Date: 1970-Feb 2014

Waste Disposal Sites - MOE 1991 Historical Approval Inventory:

Provincial [WDSH](#)

In June 1991, the Ontario Ministry of Environment, Waste Management Branch, published the "June 1991 Waste Disposal Site Inventory", of all known active and closed waste disposal sites as of October 30st, 1990. For each "active" site as of October 31st 1990, information is provided on site location, site/CA number, waste type, site status and site classification. For each "closed" site as of October 31st 1990, information is provided on site location, site/CA number, closure date and site classification. Locations of these sites may be cross-referenced to the Anderson database described under ERIS's Private Source Database section, by the CA number.

Government Publication Date: Up to Oct 1990*

Water Well Information System:

Provincial [WWIS](#)

This database describes locations and characteristics of water wells found within Ontario in accordance with Regulation 903. It includes such information as coordinates, construction date, well depth, primary and secondary use, pump rate, static water level, well status, etc. Also included are detailed stratigraphy information, approximate depth to bedrock and the approximate depth to the water table.

Government Publication Date: 1955-May 2013

Definitions

Database Descriptions: This section provides a detailed explanation for each database including: source, information available, time coverage, and acronyms used. They are listed in alphabetic order.

Detail Report: This is the section of the report which provides the most detail for each individual record. Records are summarized by location, starting with the project property followed by records in closest proximity.

Distance: The distance value is the distance between plotted points, not necessarily the distance between the sites' boundaries". All values are an approximation.

Direction: The direction value is the compass direction of the site in respect to the project property and/or center point of the report.

Elevation: The elevation value is taken from the location at which the records for the site address have been plotted. All values are an approximation. Source: Google Elevation API.

Executive Summary: This portion of the report is divided into 3 sections:

'Report Summary'- Displays a chart indicating how many records fall on the project property and, within the report search radii.

'Site Report Summary'-Project Property'- This section lists all the records which fall on the project property. For more details, see the 'Detail Report' section.

'Site Report Summary-Surrounding Properties'- This section summarizes all records on adjacent properties, listing them in order of proximity from the project property. For more details, see the 'Detail Report' section.

Map Key: The map key number is assigned according to closest proximity from the project property. Map Key numbers always start at #1. The project property will always have a map key of '1' if records are available. If there is a number in brackets beside the main number, this will indicate the number of records on that specific property. If there is no number in brackets, there is only one record for that property.


The symbol and colour used indicates 'elevation': the red inverted triangle will dictate 'ERIS Sites with Lower Elevation', the yellow triangle will dictate 'ERIS Sites with Higher Elevation' and the orange square will dictate 'ERIS Sites with Same Elevation.'

Unplottables: These are records that could not be mapped due to various reasons, including limited geographic information. These records may or may not be in your study area, and were included as reference.

Appendix G

Aerial Photographs




 Approximate location of Site
 Source: ERIS

Aerial Photograph – 1946



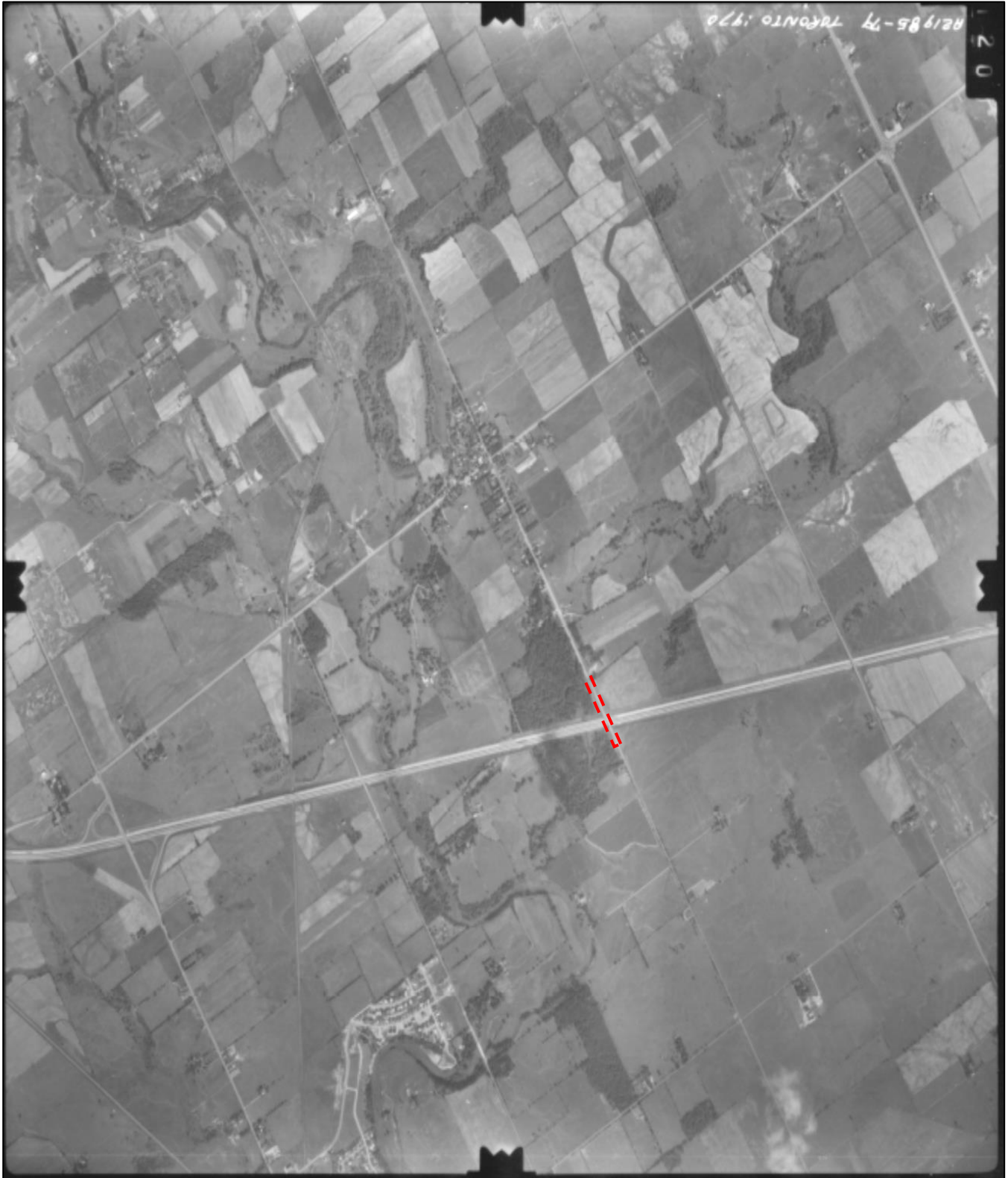
1: 20,000




 Approximate location of Site
 Source: ERIS

Aerial Photograph – 1960
1: 30,000






 Approximate location of Property
 Source: ERIS

Aerial Photograph – 1970
1: 25,000






 Approximate location of Property
 Source: ERIS

Aerial Photograph – 1980
1: 25,000





 Approximate location of Property
 Source: ERIS

Aerial Photograph – 1988
1: 25,000

