

CALL TO ARTISTS – Expression of Interest (EOI)

Project: Community Engaged Public Art at Mississauga’s Meadowvale Theatre (Design Only)

Project Budget: \$15,000.00

Proposal Deadline: March 1, 2021 at 4 p.m. EST.

1. Artist Opportunity

The City of Mississauga invites professional artists and artist-led teams to submit credentials and expressions of interest to design a permanent public artwork integrated into glass panels located in the lobby of Mississauga’s Meadowvale Theatre, as part of the Theatre’s renovation initiative. **All costs and tasks associated with the fabrication, installation and maintenance of the artwork will be paid for and coordinated by the City of Mississauga.**

The artwork will be produced onto glass panels surrounding the Theatre’s control room in the building’s lobby and will be fabricated, installed, and maintained by the City of Mississauga and its contractors. The commissioned artist(s) will be expected to complete the design of the project by **October 2021**.

Submissions to this call are due **March 1, 2021**. The selected artist(s) will work with community members to develop the design of the artwork. Public art will be fabricated and installed through Q1 2022 and unveiled in Q3 2022.

2. Project Background

Meadowvale Theatre is a performing arts facility located at 6315 Montevideo Road, and is connected to West Credit Secondary School. The Theatre is a City-owned facility on land leased from the Peel District School Board, and is operated by Culture Division staff at the City of Mississauga. The Theatre contains a lobby, licensed snack bar, rehearsal hall, and a 395-seat auditorium and stage with associated back-of-house facilities.

The Theatre, built in 1989, has been at the centre of many local presentations for over 25 years. Each year, hundreds of events and public performances, catering to wide audiences and theatregoers are offered. At Meadowvale Theatre, visitors experience all aspects of the performing arts including music, drama, dance, musical theatre, comedy and much more. The venue is rented for theatre productions and rehearsals,

as well as conferences, corporate meetings and events, film festivals, dance recitals, community events, and private parties.

As part of the City's renovation of Meadowvale Theatre, public art will be commissioned and integrated into the lobby of the building. The vision of the renovation is to contribute to the creation of a welcoming arts space, where residents and artists discover the possibilities for growth and development through artistic and cultural experiences.

The Meadowvale Theatre Strategic Plan (2014) outlines further values of the space, including: fostering community partnerships with local schools, youth centres, senior centres, and other service agencies, better reflecting the diversity of Mississauga's communities, and creating a refined, welcoming arts space where residents and artists discover possibilities for growth and development through artistic and cultural experiences. Public art located in the lobby is hoped to reflect these values.



Above: Rendering by [CS&P Architects](#) of Mississauga's Meadowvale Theatre, showing the main entrance looking east. This proposed rendering is subject to change, pending further design development.



Above: Rendering by [CS&P Architects](#) of Mississauga's Meadowvale Theatre, showing the glass on the exterior of the control room, where public art will be located. The control room is located in the Theatre's interior lobby. This proposed rendering is subject to change, pending further design development.

See Appendix I for further site renderings.

Meadowvale Theatre acts as both a prestigious performing arts venue and an important gathering place that draws residents together and contributes to the city's cultural, social, and economic vitality. The building is an important cultural destination and a community space and incubator for emerging artists. The artwork is to be community engaged work because the Theatre is too - this public art installation will play an important role in connecting the Theatre's users and visitors to the space, both as a prestigious event venue and as a community arts and culture hub.

The selected artist(s) must be willing to work with community members to inform the design of the artwork and it is expected that the selected artist(s) will facilitate opportunities for community engagement. The artist will create a digital file of their artwork, which will be provided to the General Contractor to fabricate and install onto the glass. Artistic integrity will be respected by all project team members.

The goals of this public art project are to:

- Engage community members to create artwork that reflects the diversity of Mississauga and Meadowvale Theatre’s users and patrons;
- Contribute to the redevelopment of Meadowvale Theatre as a high quality cultural hub and prestigious event venue that supports and engages emerging artists; and to
- Improve customer experience in the facility by creating an atmosphere of inspiration, creativity, vibrancy, and wonder.

3. Eligibility

This is a public competition open to professional artists and artist/artist-led teams*.

** The City of Mississauga defines a professional artist as an individual who earns all or a sizable portion of their livelihood through remuneration for artistic creation and is recognized by their peers as an artist.*

4. Anticipated Budget

The total budget for all artist fees and expenses related to this project is **\$15,000.00 + HST Canadian Dollars**.^{*} No further compensation will be made to the artist for costs associated with participating in the selection process.

** This fee includes (but is not limited to): artist fees, costs associated with the design of the artwork, technical consultation, travel to the site and project meetings, community engagement, purchase of relevant materials, lighting plan documentation, maintenance plan documentation, and attendance at unveiling of the completed artwork.*

5. Anticipated Schedule

It is expected that the commissioned artist(s) will comply with the project’s general timeline dates, as highlighted below*:

Date	Project Phase
Monday, March 1, 2021 at 4pm EST	Submissions Due for Call to Artists
Week of March 22, 2021	Art Selection Committee interviews short-listed Artists

April 2, 2021	Selected Artist(s) notified Art Services Agreement is signed
April-July 2021	Community Engagement and Artist Proposal Development
August-November 2021	Technical Design Review
December 2021	Final Artwork Files Due
Q1 2022	Fabrication and Installation (City-Led)
Q3 2022	Meadowvale Theatre Opening and Public Art Unveiling

**Schedule subject to change.*

6. Artwork Design Parameters

The artwork is required to be provided to the City as a digital file, but can be a non-digital work that is later digitized according to the specifications.

The artwork will be fabricated onto glass panels (by direct-to-glass printing, film transfer, back painted glass, or a similar method), which will be installed on the exterior sections of the Control Room. The City will determine the best fabrication method for the artwork in consultation with the selected artist(s) and project team.

Examples of potential fabrication methods include direct-to-glass printing, which involves using a glass printer to jet ceramic ink directly onto glass panels, back mounted colour film transfers, and back painted glass. Direct-to-glass printing uses image processing software to turn standard graphic files into ready-to-print images that are tuned for optimum results on glass. Back painted glass typically uses a resin paint and is applied on the back of the glass panel. See example works below.



Above: Artistic interpretation of the Kansas City Skyline, Blue Cross Blue Sheild, Kansas City Headquarters, MO



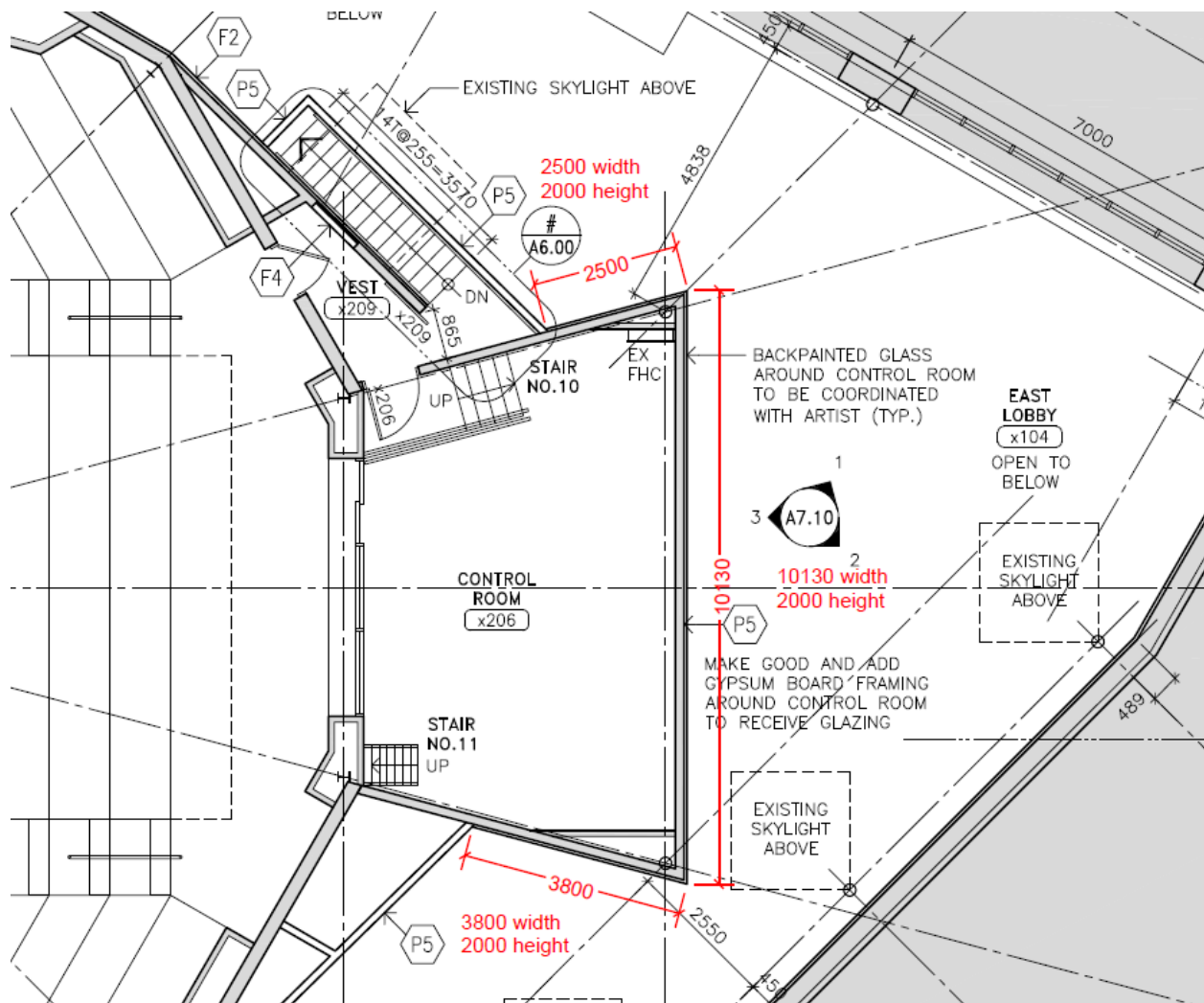
Above: Water Walk by Paul Housberg, Spaulding Rehabilitation Hospital, Boston, MA, 2013

The final artwork design must be digitally rendered and/or digitized and provided to the City's Public Art Program in a high-quality file format. The City will work with its contractors to fabricate the artwork design onto glass panels. Specific file format, size,

printing method, and technical design requirements will be confirmed by Public Art Program staff once the artist(s) is selected.

The selected artist(s) will be required to provide a detailed installation plan describing artwork scale and placement on the glass, as well as a preferred lighting plan to best complement their work. The proposed lighting plan is designed in consultation with the Project Team to ensure it can be accommodated within the allowable fabrication and installation budget.

See Appendix II for technical design drawings.



7. Selection Process and Criteria

Submissions to this Call to Artists will be reviewed by a jury of qualified persons, including arts professionals, community members, and members from Meadowvale Theatre's design and architecture teams. The jury will evaluate applications on the basis of:

- Qualifications and professional experience of the artist(s);
- Demonstrated ability and interest of the artist(s) to engage community members and to work collaboratively through the design process and to execute a project of this scale under the budget and timeline set out;
- Demonstrated experience with and expressed desire to create public art for and in the public realm; and,
- Artistic excellence and merit of the artist's past work.

The selected artist(s) should be passionate about arts spaces and their potential as spaces for growth and development through artistic and cultural experiences.

Up to five artists may be short-listed for an in-person interview, to take place the week of **March 22-26 2021 9:00 a.m. and 4:00 p.m.** Interviews will take place virtually and will be recorded and shared with the Art Selection Committee. Artists must be prepared to speak to their vision and approach for this community-engaged artwork but will not need to present a formal proposal.

Following the interviews, the jury may select an artist or artist/artist-led team for the commission. The selected artist(s) will develop their artwork proposal in collaboration with the City and in response to artist-led community engagement.

The City of Mississauga reserves the right to select and retain the artist deemed most appropriate for the project at its sole discretion.

8. Submission Requirements

Please read all components of the Call to Artists prior to completing your submission. A complete submission package includes the following documentation **in one combined PDF format**:

- a) **Artist declaration**: use the form provided below.
- b) **Artist statement** (1-2 pages): a written expression of interest detailing

- a. a summary of qualifications and professional experience that outlines the artist's suitability to this project;
- b. why the context of the project is interesting or important to the artist; and
- c. your experience with community engaged art processes.
- c) **Artist's CV:** highlight relevant experience on projects similar to or directly related to this project.
- d) **Support materials:** up to 10 images of past work (with accompanying documentation list, see *below*)
- e) **Documentation list:** all visual support materials must be accompanied by a written list with artist's name, title of work, medium, dimensions (if applicable), location and date.
- f) **References:** include contact name, title, organization, telephone number, and email address for two references who can speak to the artist's artistic practice and interest and/or experience in public art projects.

Submissions must be sent by email to:

public.art@mississauga.ca

Subject: Artist Submission – Meadowvale Theatre

If the file size exceeds 20 MB, artists are asked to use an external file share program. Incomplete submissions or submissions received after the deadline will not be juried.

9. Reserved Rights of the City of Mississauga

The City of Mississauga (the "City"), at its sole discretion, may request clarifications or request additional information, as deemed necessary to evaluate the submissions. The City retains the sole discretion to determine whether a submission is responsive and if the prospective Artist or Artist Team is capable of performing the Work. The City reserves the right, at its sole discretion, to determine the number of pre-qualified Artists or Artist Teams. The City reserves the right to not proceed with awarding a contract.

10. Publication of Competition Information

The City of Mississauga shall have the exclusive right to issue all public announcements regarding the competition.

11. Additional Information

For additional information or questions please contact:

Philippa French, Public Art Curator, philippa.french@mississauga.ca

Please refer to the City of Mississauga [Public Art Master Plan](#) for additional details about the goals of public art in Mississauga.

12. Artist Declaration

The following Declaration is to be signed by the Artist or Artist Team and submitted as part of their expression of interest package.

I/We hereby declare that the information provided herein is true and correct to the best of my/our knowledge.

Name _____

Signature _____

Date _____

Name _____

Signature _____

Date _____

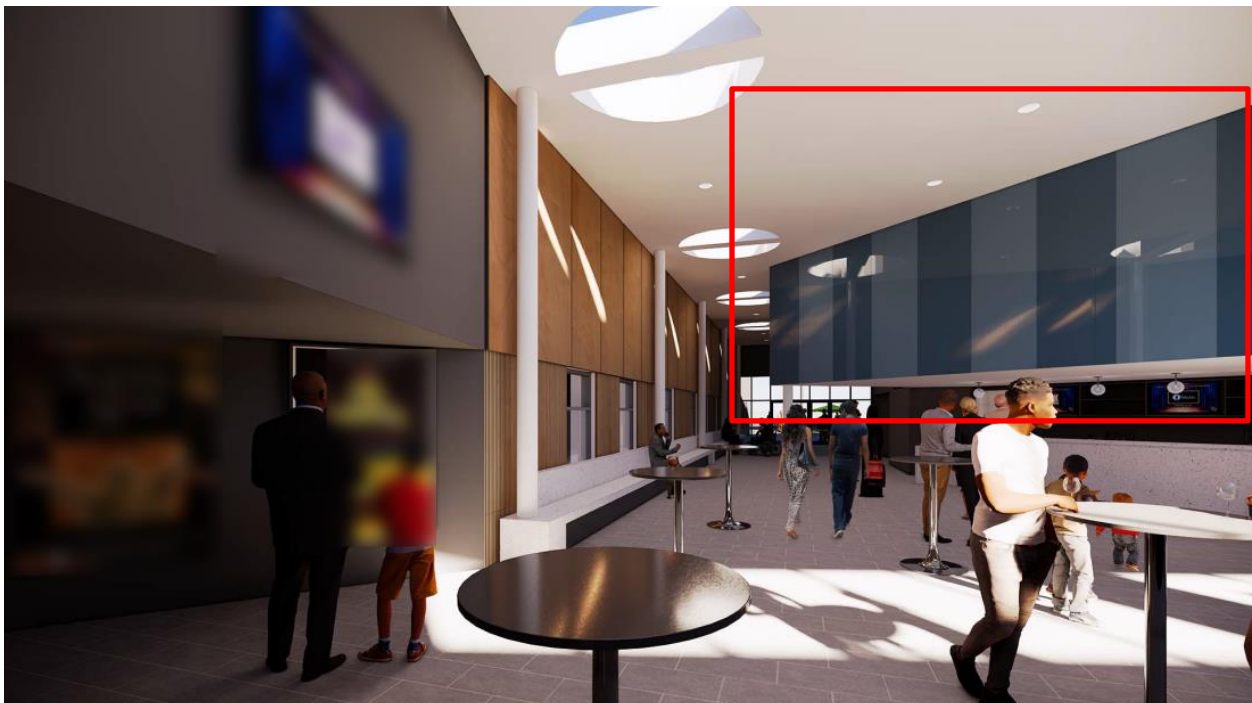
Appendix I: Site Renderings



Above: View from inside the front entrance of the Theatre, looking towards the lobby. Rendering by CS&P Architects of Mississauga's Meadowvale Theatre, showing the coloured glass on the exterior of the control room (outlined in red), where public art will be located. The control room is located in the Theatre's interior lobby. This proposed rendering is subject to change, pending further design development.



Above: View of glass control room (outlined in red) from the lobby, looking towards the concession (under the control room). This proposed rendering is subject to change, pending further design development.

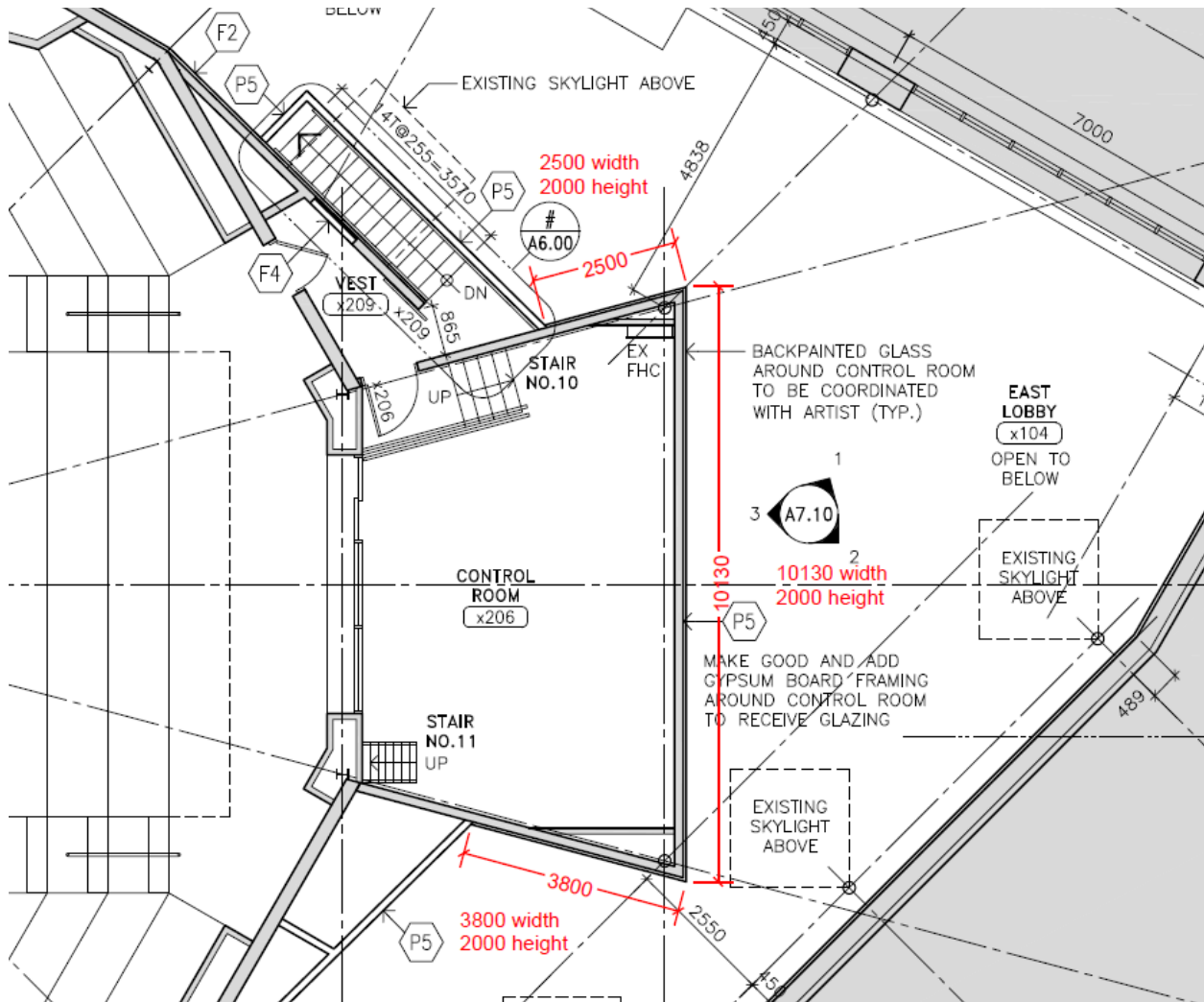


Above: View of glass control room (outlined in red) from the lobby, looking towards the lobby exit. This proposed rendering is subject to change, pending further design development.



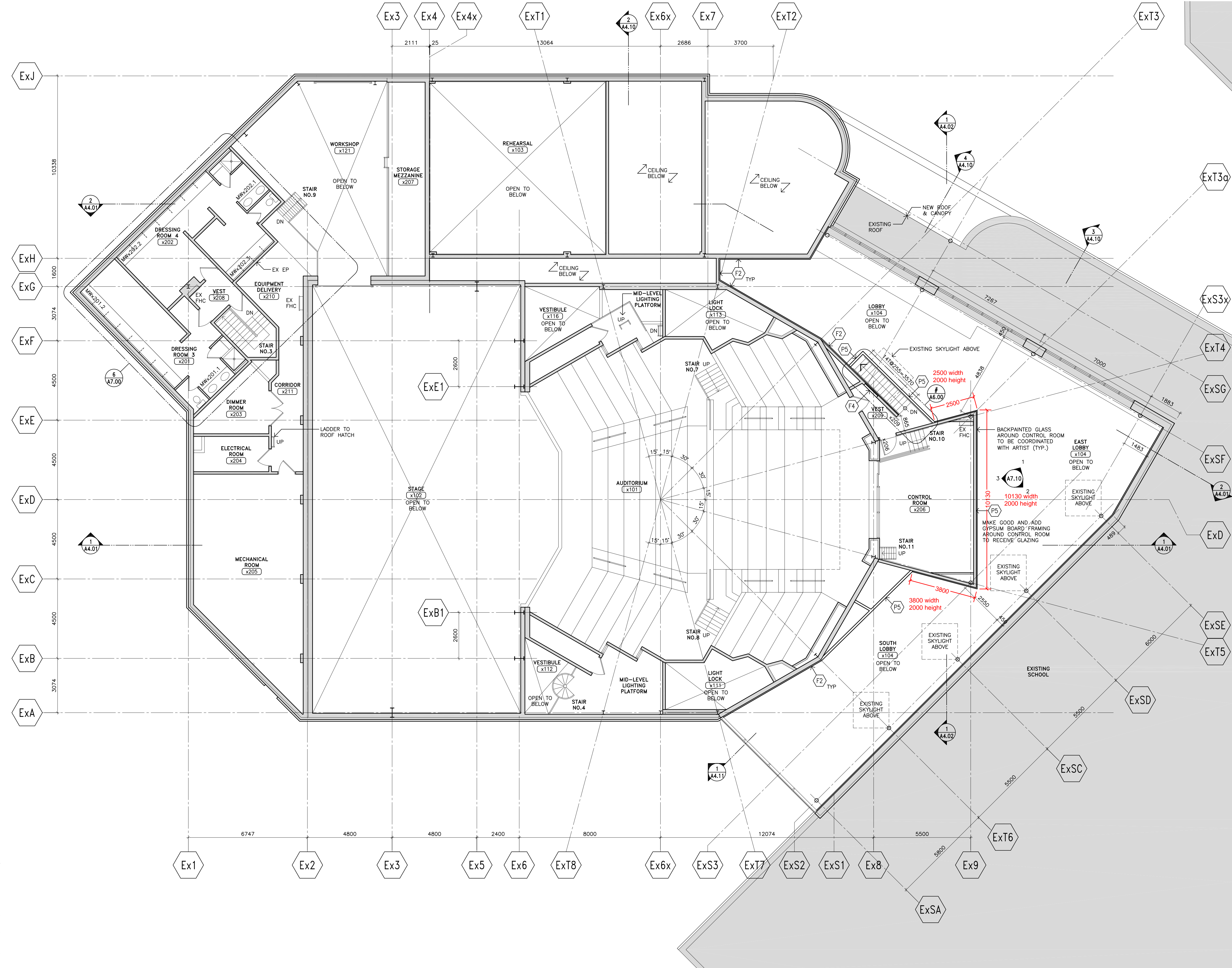
Above: View of glass control room (outlined in red) from the lobby exit, looking towards the concession (under the control room). This proposed rendering is subject to change, pending further design development.

Appendix II: Site Drawings



FILENAME:P:\20017\CAD\20017 - A211.dwg

DRAWING LAST EDITED: 01DEC20 14:10:09



PARTITION SCHEDULE

P1	90MM CONCRETE BLOCK
P2	140MM CONCRETE BLOCK
P3	190MM CONCRETE BLOCK
P4	240MM CONCRETE BLOCK
P5	16MM GYPSUM BOARD 152MM METAL STUDS 90MM SOUND ATTENUATION BATT INSUL. 16MM GYPSUM BOARD
P6	16MM GYPSUM BOARD 152MM METAL STUDS 150MM SOUND ATTENUATION BATT INSUL. 16MM GYPSUM BOARD
P7	SHAFT WALL: ULC W452 16MM GYPSUM BOARD (TYPE X) 64MM WIDE C-H STEEL STUD 25MM GYPSUM BOARD (TYPE X)
F1	16MM GYPSUM BOARD 22MM METAL FURRING CHANNEL
F2	16MM GYPSUM BOARD 41MM METAL STUD
F3	16MM GYPSUM BOARD 64MM METAL STUD
F4	16MM GYPSUM BOARD 92MM METAL STUD
F5	16MM GYPSUM BOARD 92MM METAL STUD

SUFFIXES

A	ASHLAR COURSE
B	DOUBLE LAYER GWB - ONE SIDE
C	DOUBLE LAYER GWB - BOTH SIDES
R	RUNNING BOND
X	TYPE 'X' GYPSUM WALL BOARD

PARTITION SCHEDULE NOTES

- ALL INTERIOR CONCRETE BLOCK IS TYPICALLY PARTITION TYPE 2, 190MM HIGH, STACK BOND, UNLESS OTHERWISE NOTED.
- ALL STACK BOND JOINTS TO HAVE RAKED MORTAR JOINTS VERTICALLY AND HORIZONTALLY

SYMBOL LEGEND

2A	PARTITION TYPE (SEE PARTITION SCHEDULE)
000	ROOM NUMBER
MSxxx	HOLLOW METAL SCREEN TYPE
ASxxx	ALUMINUM SCREEN TYPE
STxxx	STOREFRONT ALUM SCREEN TYPE
GSxxx	GLASS GUARD
A	DOOR NUMBER
EXISTING DOOR	EXISTING DOOR
EXISTING WALL	EXISTING WALL
SHADED AREAS NOT IN CONTRACT	SHADED AREAS NOT IN CONTRACT
+ 0.000	TOP OF FIN. FLOOR
GRID	EXISTING GRID
GRID	NEW GRID

GENERAL NOTES

- ALL PARTITIONS TO EXTEND TO UNDERSIDE OF STRUCTURAL SLAB/METAL DECK, WITH FIRE RESISTANCE RATINGS AS NOTED.
- USE MOISTURE RESISTANT GWB FOR ALL WALLS AND CEILINGS IN WASHROOMS.
- PATCH ALL PENETRATIONS CREATED BY NEW WORK AND MAKE GOOD TO MATCH SURROUNDING FINISHES.

Key to Detail Location

NO.	Detail Number
NO.	Drawing Number

If this sheet is not 24" x 36" (609.6 x 914.4 mm) It is a reduced print - Read dwg. accordingly.

Contractors must check and verify all dimensions on the job and report any discrepancies to the Architect before proceeding with the work.

All prints and specifications are the property of the Architect and must be returned at the completion of the work.

Drawings should not be scaled.

No	Date	Revision/issued
1	NOV 2, 2020	ISSUED FOR 100% DD
2	DEC 2, 2020	ISSUED FOR 50% CD

CONSULTANTS

ARCHITECT
CS&P Architects Inc.
2345 Yonge St., Suite 200
Toronto, ON. M4P 2E5
Phone: 416-482-5002
Email: cspe@csparch.com

CIVIL
MTE Consultant Inc.
1016 Sutton Drive, Unit A
Burlington, ON. L7L 6B8
Phone: 905-639-2552

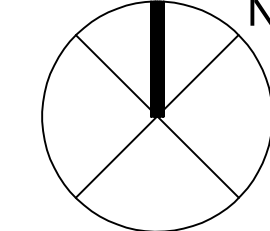
LANDSCAPE
GSP Group
72 Victoria Street South, Suite 201
Kitchener, ON. N2G 4Y9
Phone: 519-569-8883

MECH & ELEC
& ICAT
HH Angus & Associates Ltd.
1127 Leslie Street
North York, ON. M3C 2J6
Phone: 416-443-8200

STRUCTURAL
LEA Consulting Ltd.
425 University Avenue, Suite 400
Toronto, ON. M5G 1T6
Phone: 416-572-1786



PROJECT NORTH



CS&PArchitects

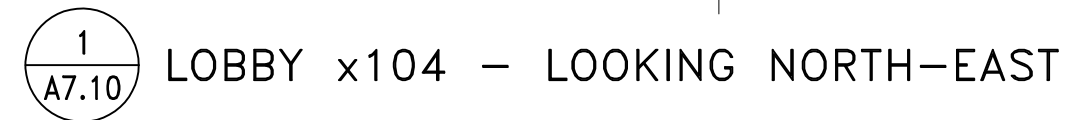
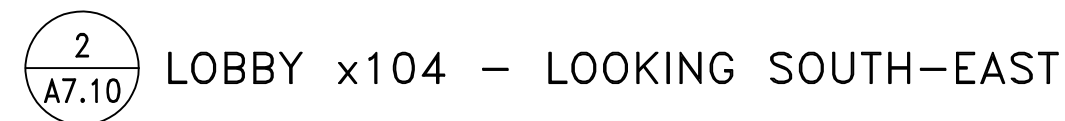
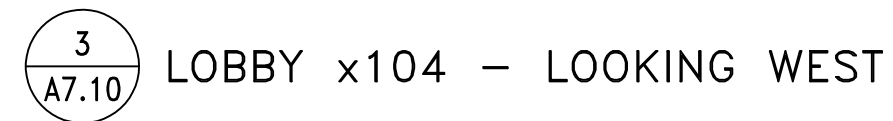
PROJECT NAME
**MEADOWVALE THEATRE
RENOVATION**

PROJECT ADDRESS
6315 Montevideo Road
Mississauga, ON L5N 4G7

CS&P Architects Inc.
T: 416.482.5002 F: 416.482.5040
cspe@csparch.com
2345 Yonge Street, Suite 200
Toronto, ON M4P 2E5 Canada
www.csparch.com

SECOND FLOOR
PLAN

scale: 1:100
date: SEPTEMBER 11, 2020
drawn: JK
checked by: CS&P
project number: 20017
drawing number: A2.11



scale: 1:50
date: OCTOBER 27, 2020
drawn: JK
checked by: CS&P
project number: 20017
drawing number: A7 10

