
Traffic Safety Council

Date

2016/11/30

Time

5:00 P.M.

Location

Hearing Room, 2nd Floor, Civic Centre
300 City Centre Drive, Mississauga, ON L5B 3C1

Members

Councillor Sue McFadden, Ward 10
Councillor Chris Fonseca, Ward 3
Councillor John Kovac, Ward 4
Sandra Beniuk, Citizen Member
Arvind Bhaskar, Citizen Member
Brad Butt, Citizen Member
Robert Crocker, Peel District School Board Trustee
Tamara Coulson, Citizen Member
Louise Goegan, Citizen Member
Denise Gordon-Mohamud, Citizen Member
Sushil Kumra, Citizen Member
Heather Relf, Citizen Member (Vice-Chair)
Ajay Sharma, Citizen Member
Mashkoor Sherwani, Citizen Member
Daniel Suess, Citizen Member
Boris Swedak, Life Member
Altamash Syed, Citizen Member
Thomas Thomas, Dufferin-Peel Catholic District School Board Trustee
Katherine Vukobrat, Citizen Member
Peter Westbrook, Citizen Member (Chair)

ADVISORY BOARD

Andy Bate, Manager, Traffic Services and Road Safety

Sheelagh Duffin, Supervisor, Crossing Guards

Daniel Elias, Principals/Vice-Principals Association Peel District School Board

Barry Foley, Manager, Parking Enforcement

Anna Gentile/ Marcy Macina - Central Planning and Operations Officer, Student Transportation of Peel Region (STOPR)

Anna Capuano, Principals/Vice-Principals Association Dufferin-Peel Catholic District School Board

Alex Liya, Traffic Operations Technician

Sgt. Jason Watson, Peel Regional Police

Denna Yaunan, Traffic Operations Technologist

Erica Warsh, Transportation Demand Management Coordinator

Contact

Angie Melo, Legislative Coordinator, Legislative Services

905-615-3200 ext. 5423/Fax 905-615-4181/Email: angie.melo@mississauga.ca

Find it Online

<http://www.mississauga.ca/portal/cityhall/trafficsafetycouncil>

1. CALL TO ORDER
2. DECLARATIONS OF CONFLICT OF INTEREST
3. PRESENTATIONS / DEPUTATIONS
4. PUBLIC QUESTION PERIOD

Traffic Safety Council may grant permission to a person who is present at the Traffic Safety Council and wishes to address a matter on the Agenda. Persons addressing the Committee will ask their questions within a time limit of 5 minutes, as public question period total limit is 15 minutes.

5. MATTERS TO BE CONSIDERED

- 5.1 Approval of October 28, 2016

Minutes of the Traffic Safety Council meeting held on October 28, 2016

RECOMMEND APPROVAL

- 5.2 Site Inspection Reports – St. Charles Garnier Catholic School (Ward 4)

Site Inspection Reports for the inspections conducted on November 1 and 21, 2016 at the intersection of Rathburn Road and Meadows Boulevard for the students attending St. Charles Garnier Catholic School.

RECOMMENDATION

1. That the warrants are not met for the retention of the school crossing guard at the intersection of Rathburn Road and Meadows Boulevard for the students attending St. Charles Garnier Catholic School.
2. That the crossing located at Rathburn Road and Meadows Boulevard be closed effective March break 2017.
3. That the Principal of St. Charles Garnier Catholic School be requested to notify the parents and students of St. Charles Garnier Catholic School that the crossing located at Rathburn Road and Meadows Boulevard will be closed effective March break 2017.

RECOMMEND APPROVAL

5.3 Site Inspection Report – St. Pio of Pietrelcina Catholic School (Ward 4)

Site Inspection Report for the inspection conducted on November 2, 2016 at the intersection of Huron Heights Drive and Elia Avenue for the students attending St. Pio of Pietrelcina Catholic School.

RECOMMENDATION

1. That Traffic Safety Council be requested to conduct a further site inspection in December 2016 at the intersection of Huron Heights Drive and Elia Avenue for the students attending St. Pio Pietrelcina Catholic School.
2. That Peel Regional Police be requested to enforce rolling stops at the intersection of Huron Heights Drive and Elia Avenue for the students attending St. Pio of Pietrelcina Catholic School.

RECOMMEND APPROVAL

5.4 Site Inspection Report – Cashmere Public School (Ward 7)

Site Inspection Report for the inspection conducted on November 4, 2016 at the intersection of Mavis Road and Paisley Boulevard for the students attending St. Cashmere Public School.

RECOMMENDATION

That the request for the placement of a crossing guard at the intersection of Mavis Road and Paisley Boulevard for the students attending Cashmere Public School be denied as the warrants are not met.

RECOMMEND APPROVAL

5.5 Site Inspection Report – St. Therese of the Child Jesus Catholic School (Ward 10)

Site Inspection Report for the inspection conducted on November 8, 2016 at the intersection of Forest Park Drive and Bloomfield Drive for the students attending St. Therese of the Child Jesus Catholic School.

RECOMMENDATION

That the placement of a crossing guard at the intersection of Forest Park Drive and Bloomfield Drive for the students attending St. Therese of the Child Jesus Catholic School be implemented as the warrants have been met.

RECOMMEND APPROVAL

5.6 Site Inspection Report – Hillside Public School (Ward 2)

Site Inspection Report for the inspection conducted on November 10, 2016 at the intersection of Kelly Road and Truscott Drive for the students attending Hillside Public School.

RECOMMENDATION

That the request for the placement of a crossing guard at the intersection of Kelly Road and Truscott Drive for the students attending Hillside Public School be denied as the warrants are not met.

RECOMMEND APPROVAL

5.7 Site Inspection Report – Hillside Public School (Ward 2)

Site Inspection Report for the inspection conducted on November 22, 2016 at the intersection of Kelly Road and Brookhurst Road for the students attending Hillside Public School.

RECOMMENDATION

That the request for the placement of a crossing guard at the intersection of Kelly Road and Brookhurst Road for the students attending Hillside Public School be denied as the warrants are not met.

RECOMMEND APPROVAL

5.8 Site Inspection Report – McKinnon Public School (Ward 10)

Site Inspection Report for the inspection conducted on November 11, 2016 at the intersection of Tacc Drive and Tenth Line West for the students attending McKinnon Public School.

RECOMMENDATION

1. That Traffic Safety Council conduct a further site inspection in spring 2017 at the intersection of Tacc Drive and Tenth Line West for the students attending McKinnon Public School, once the "No Stopping" signage as per Recommendation TSC-0099-2016.
2. That the Principal of McKinnon Public School be requested to remind parents and students of the requirement of wearing a helmet while riding a bike.

RECOMMEND APPROVAL

5.9 Site Inspection Report – Owenwood Public School (Ward 2)

Site Inspection Report for the inspection conducted on November 17, 2016 at the intersection of Lakeshore Road and Silver Birch Trail for the students attending Owenwood Road.

RECOMMENDATION

1. That the warrants are not met for the retention of the school crossing guard at the intersection of Lakeshore Road West and Silver Birch Trail for the students attending Owenwood Public School.
2. That the crossing located at Lakeshore Road West and Silver Birch Trail f be closed effective March break 2017.
3. That the Principal of Owenwood Public School be requested to notify the parents and students of Owenwood Public School that the crossing located at Lakeshore Road West and Silver Birch Trail will be closed effective March break 2017.

RECOMMEND APPROVAL

- 5.10 Email dated October 26, 2016 from Councillor Ras on behalf of an area resident, requesting a site inspection at on Bromsgrove Road in front of Clarkson Secondary School.

RECOMMEND RECEIPT/REFERRAL

- 5.11 Request received from resident Christine Baron, requesting a site inspection at Windwood Drive and the park path for students attending Settler's Green Public School.

RECOMMEND RECEIPT/REFERRAL

- 5.12 Email dated November 9, 2016 from resident David Brennan, requesting a site inspection in front of St. Hilary Catholic School.

RECOMMEND RECEIPT/REFERRAL

- 5.13 Email dated November 10, 2016 from Councillor Mahoney, on behalf of Loyola School Council Chair, Rita Reid, requesting a site inspection at Burnhamthorpe Road, in front of Loyola Catholic Secondary School.

RECOMMEND RECEIPT/REFERRAL

- 5.14 Email dated November 10, 2016 from Councillor Pat Saito, on behalf of an area resident, requesting a site inspection on Montevideo Road, in front of St. Teresa of Avila Catholic School.

RECOMMEND RECEIPT/REFERRAL

5.15 Brian Fleming Public School and St. Alfred's Catholic School (Ward 3)

Councillor Chris Fonseca with respect to traffic concerns in the area of Brian Fleming Public School and St. Alfred's Catholic School.

DIRECTION REQUIRED

6. SUB COMMITTEE REPORTS

7. PARKING ENFORCEMENT REPORT

7.1 Parking Enforcement School Zone Report – October 2016

A report from the Manager of Parking Enforcement with respect to parking enforcement in school zones for the month of October 2016

RECOMMEND RECEIPT

8. TRANSPORTATION AND WORKS ACTION ITEMS

8.1 Transportation and Works Department Action Items – October 2016

Action Items List from the Transportation and Works Department for the month of October 2016.

RECOMMEND RECEIPT

OTHER BUSINESS

DATE OF NEXT MEETING: January 25, 2017

ADJOURNMENT

City of Mississauga
Minutes



Traffic Safety Council

Date

2016/10/26

Time

5:00 p.m.

Location

Hearing Room, 2nd Floor, Civic Centre
300 City Centre Drive, Mississauga, ON L5B 3C1

Members Present

- Councillor Chris Fonseca, Ward 3 (Arrived at 5:03pm)
- Councillor John Kovac, Ward 4
- Ajay Sharma, Citizen Member
- Sandra Beniuk, Citizen Member
- Brad Butt, Citizen Member
- Robert Crocker, Peel District School Board Trustee
- Heather Relf, Citizen Member (Vice-Chair)
- Katherine Vukobrat, Citizen Member
- Louise Gogan, Citizen Member
- Sushil Kumra, Citizen Member
- Tamara Coulson, Citizen Member

Members Absent

- Councillor Sue McFadden, Ward 10
- Altamash Syed, Citizen Member
- Arvind Bhaskar, Citizen Member
- Boris Swedak, Life Member
- Dan Suess, Citizen Member
- Denise Gordon-Mohamud, Citizen Member
- Mashkoor Sherwani, Citizen Member
- Thomas Thomas, Dufferin-Peel Catholic District School Board Trustee
- Peter Westbrook, Citizen Member (Chair)

Advisory Board Present

Alex Liya, Traffic Operations Technician, Transportation and Works

Denna Yaunan, Traffic Operations Technologist, Transportation and Works

Sheelagh Duffin, Supervisor, Crossing Guard, Transportation and Works

Barry Foley, Manger, Parking Enforcement

Anna Gentile, Central Planning and Operations Officer, Student Transportation of Peel Region (STOPR)

Sgt. Jason Watson, Peel Regional Police

Contact

Angie Melo, Legislative Coordinator, Legislative Services

905-615-3200 ext. 5423/ Fax 905-615-4181/ Email angie.melo@mississauga.ca

Find it online

<http://www.mississauga.ca/portal/cityhall/trafficsafetycouncil>

CALL TO ORDER: 5:00 p.m.

DECLARATIONS OF DIRECT (OR INDIRECT) PECUNIARY INTEREST - Nil

DEPUTATIONS

Jean Souliere, President, Force Multiplier Solutions Canada spoke to stop arm cameras on school buses to catch drivers who pass school buses when the buses stop arm is extended. He spoke to a completed pilot project in the City of Mississauga and noted that on average 2.5 violations were recorded per day. He further spoke to the program being cost neutral to the city and the need to change driver behaviours.

Questions and comments were made by Members of the Committee about an educational component; motorist training; statistical data collected; support from the Peel Regional Police and a partnership agreement between the City and Force Multiplier Solutions Canada.

RECOMMENDATION

That the PowerPoint presentation by Jean Souliere, President, FxS Canada Inc. with respect to Force Multiplier Solutions – Stop Arm Cameras, be received for information.

Received (K. Vukobrat)
Recommendation TSC-0089-2016)

MATTERS CONSIDERED

1. Approval of June 22, 2016 Minutes

Minutes of the Traffic Safety Council meeting held on September 28, 2016 were approved as amended with the addition of Robert Crocker, Peel District School Board Trustee being present.

Approved (T. Coulson)

2. Site Inspection Report – Cashmere Public School (Ward 7)

Site Inspection Report for the inspections conducted on October 4, 2016 at the intersection of Mavis Road and Paisley Boulevard, for the students attending Cashmere Public School.

RECOMMENDATION

That Traffic Safety Council be requested to re-inspect the intersection of Mavis Road and Paisley Boulevard for the students attending Cashmere Public School, at the end of October or beginning of November 2016.

Approved (Councillor Fonseca)

Recommendation TSC-0090-2016

3. Site Inspection Report – St. Therese of the Child Jesus Catholic School (Ward 10)

Site Inspection Report for the inspection conducted on October 6, 2016 at the intersection of Forest Park Drive and Bloomfield Drive for the students attending St. Therese of the Child Jesus Catholic School.

RECOMMENDATION

1. That Traffic Safety Council be requested to re-inspect the intersection of Forest Park Drive and Bloomfield Drive for the students attending St. Therese of the Child Jesus Catholic School in November 2016.
2. That Transportation and Works be requested to review signage in front of St. Therese of the Child Jesus Catholic School.

Approved (S. Beniuk)

Recommendation TSC-0091-2016

4. Site Inspection Reports – St. Bernadette Catholic School (Ward 6)

Site Inspection Report for the inspection conducted on October 12, 2016 at the intersection of Creditview Road and South Parade Court for the students attending St. Bernadette Catholic School.

RECOMMENDATION

1. That the Traffic Safety Council re-inspect the intersection of Creditview Road and South Parade for the students attending St. Bernadette Catholic School, in September 2017, once the students from St. Dunstan Catholic School move to St. Bernadette Catholic School, with the closure of St. Dunstan Catholic School.
2. That Transportation and Works be requested to paint Zebra Markings at the Intersection of Creditview Road and South Parade Court/Rathkeale Road.

Approved (T. Coulson)

Recommendation TSC-0092-2016

5. Peel Inspection Report – St. Philip Catholic School (Ward 7)

Site Inspection Report for the inspection conducted on September 19, 2016 and October 20, 2016 at the intersection of Confederation Parkway and Fairview Road West for the students attending St. Philip Catholic School.

RECOMMENDATION

That the warrants are met for the retention of the crossing guard at the intersection of Confederation Parkway and Fairview Road West for the students attending St. Philip Catholic School.

Approved (S. Beniuk)
Recommendation TSC-0093-2016

6. Site Inspection Request – St. Joseph Elementary School (Ward 11)

Email dated October 20, 2016 from Councillor George Carlson on behalf of residents requesting a site inspection and safety review on Church Street in front of St. Joseph's Elementary school.

RECOMMENDATION

That the email dated October 20, 2016 from Councillor George Carlson on behalf of residents requesting a site inspection and safety review on Church Street in front of St. Joseph's Elementary school, be received and referred to the Traffic Safety Council Site Inspection Subcommittee for a report back to the Traffic Safety Council.

Received (T. Coulson)
Recommendation TSC-0094-2016

7. Parking Enforcement School Zone Report – September 2016

A report from the Manager of Parking Enforcement with respect to parking enforcement in school zones for the month of September 2016.

RECOMMENDATION

That the Report from the Manager of Parking Enforcement with respect to parking enforcement in school zones for the month of September 2016, be received for information.

Received (T. Coulson)
Recommendation TSC-0095-2016

8. Ward 3 "Community Corner" Invitation

Councillor Fonseca spoke to the email dated October 5, 2016 inviting Traffic Safety Council to participate in a "Community Corner" for Ward 3. She requested that any interested committee member email her to be a part of her Community Corner.

RECOMMENDATION

Email dated October 5, 2016 from Chris Fonseca, Councillor Ward 3, inviting Traffic Safety Council to participate in a "Community Corner" for Ward 3 be received for information.

Received (K. Vukobrat)

Recommendation TSC-0096-2016

9. Site Inspection Reports – St. Elizabeth Seton Catholic School (Ward 9)

Site Inspection Report for the inspection conducted on October 13, 2016 at the intersection of Glen Erin Drive and Windwood Drive for the students attending St. Elizabeth Seton Catholic School

RECOMMENDATION

1. That the request for a crossing guard at the intersection Glen Erin Drive and Windwood Drive for the students attending St. Elizabeth Seton Catholic School, be denied as the warrants are not met.
2. That the Principal of St. Elizabeth Seton Catholic School be requested to remind the students to enter the crosswalk, to cross, only when the walk signal is displayed.

Approved (B. Butt)

Recommendation TSC-0097-2016

10. Site Inspection Report – Meadowvale Village Public School, David Leeder Middle School and Rotherglen Elementary School (Ward 11)

Site Inspection Report for the inspection conducted on October 18, 2016 at the intersection of Second Line West at the Walkway between Old Derry Road and Hush Lane, and a second site inspection conducted on October 18, 2016 at the intersection of Second Line West and Old Derry Road, for the students attending Meadowvale Village Public School, David Leeder Middle School and Rotherglen Elementary School.

RECOMMENDATION

1. That the request for a crossing guard Second Line West at the walkway between Old Derry Road and Hush Lane, for the students attending G Meadowvale Village Public School, David Leeder Middle School and Rotherglen Elementary School, be denied as the warrants are not met.
2. That the request for a crossing guard at the intersection of Second Line West and Old Derry Road, for the students attending Meadowvale Village Public School, David Leeder Middle School and Rotherglen Elementary School, be denied as the warrants are not met.
3. That Peel Regional Police be requested to enforce stopping violations at the intersection of Second Line West and Old Derry Road, for students attending Meadowvale Village Public School, David Leeder Middle School and Rotherglen Elementary School.
4. That Transportation and Works be requested to consider the feasibility to conduct a warrant study for a traffic signal at the intersection of Second Line West and Old Derry Road, for students attending Meadowvale Village Public School, David Leeder Middle School and Rotherglen Elementary School.

Approved (T. Coulson)
Recommendation TSC-0098-2016

11. Site Inspection Reports – McKinnon Public School (Ward 10)

Site Inspection Report for the inspection conducted on October 24, 2016 at the intersection of Tacc Drive and Tenth Line West for the students attending McKinnon Public School.

RECOMMENDATION

1. That the Traffic Safety Council be requested to conduct a further site inspection in November 2016, at the intersection of Tacc Drive and Tenth Line West for the students attending McKinnon Public School.
2. That Transportation and Works be requested to review the signage at the intersection of Tacc Drive and Tenth Line West for the students attending McKinnon Public School.

Approved (T. Coulson)
Recommendation TSC-0099-2016

12. Site Inspection Reports – St. Aloysius Gonzaga Secondary School

Brad Butt, Citizen Member spoke to the Site Inspection Report for the inspection conducted on October 19, 2016 at the 2800 Erin Centre Boulevard, at St. Aloysius Gonzaga Secondary School's driveway. He noted the complexity of the location and the coordination between the School Board and the City of Mississauga.

RECOMMENDATION

1. That the new Kiss and Ride layout at St. Aloysius Gonzaga Secondary School, prepared by Dale Lucas, from the Dufferin-Peel Catholic School Board, be distributed to the appropriate City staff for approval.
2. That once the new Kiss and Ride layout for St. Aloysius Gonzaga Secondary School, prepared by Dale Lucas, from the Dufferin-Peel Catholic School Board, is approved, that Transportation and Works be requested to review the feasibility of the following:
 - a. Implementing a left arrow on Erin Centre Boulevard at Planation Place.
 - b. Implementing an island at the north entrance of St. Aloysius Gonzaga Secondary School, on Erin Centre Boulevard.
 - c. Review the signage on the property shared by St. Aloysius Gonzaga Secondary School and Erin Meadows Community Centre, and on-street signage.

Approved (B. Butt)

Recommendation TSC-0100-2016

13. Site Inspection Request – St. Pio of Pietrelcina Catholic School (Ward 4)

Councillor Kovac spoke a request received from a resident and from Julie Lavallo, Principal at St. Pio of Pietrelcina Elementary School requesting a site inspection at the intersection of Huron Heights Drive and Elia Avenue for the placement of a crossing guard. Sheelagh Duffin, Supervisor, Crossing Guard noted that a site inspection would be done at the location.

RECOMMENDATION

That the request from Julie Lavallo, Principal at St. Pio of Pietrelcina Elementary School requesting a site inspection at the intersection of Huron Heights Drive and Elia Avenue for the placement of a crossing guard, be received and referred to the Traffic Safety Council Site Inspection Subcommittee for a report back to the Traffic Safety Council.

Approved (Councillor Kovac)

Recommendation TSC-0101-2016

14. Transportation and Works Department Action Items – September 2016

Action Items List from the Transportation and Works Department for the month of September 2016.

RECOMMENDATION

That the Action Items List from the Transportation and Works Department for the month of September 2016, be received for information.

Received (Councillor Fonseca)
Recommendation TSC-0102-2016

15. Minutes of the Walk To School Subcommittee meeting – October 19, 2016

The minutes from the October 19, 2016 Walk to School Subcommittee meeting.

RECOMMENDATION

That the Minutes of the Walk to School Subcommittee meeting on October 19, 2016, be received for information.

Received (B. Butt)
Recommendation TSC-0103-2016

RECOMMENDATION

That the amount of up to \$4,000.00 be approved for the purchase of promotional items to be included in the baskets for schools launching a Walk to School Program.

Approved (B. Butt)
Recommendation TSC-0104-2016

16. Traffic Safety Council Member Annual Appreciation Dinner

Traffic Safety Council Members discussed and agreed on a location and date for the annual appreciation dinner.

RECOMMENDATION

That the amount of up to \$1,500.00 per approved for the cost of the Traffic Safety Council Members annual appreciation dinner to be held at Pete's on Eglinton on December 14, 2016.

Approved (B. Butt)
Recommendation TSC-0105-2016

17. Twenty-Seventh Annual Crossing Guard Appreciation Banquet/Christmas Dinner

Members of the Committee reviewed the email from Sheelagh Duffin, Supervisor, Crossing Guards who extended an invitation to one member of the Traffic Safety Council to attend the annual crossing guard appreciation banquet/Christmas dinner. The committee decided that the Vice-Chair along with the Chair of Traffic Safety Council would attend the annual crossing guard appreciation dinner.

OTHER BUSINESS - NIL

ADJOURNMENT: 5:39 p.m. (T. Coulson)

Date of Next Meeting: November 23, 2016

DRAFT

Traffic Safety Council
NOV 30 2016

Corporate Services
Office of the City Clerk

Site Inspection Report



Site	
School: St. Charles Garnier Catholic School	Address: 4233 Central Parkway E, Mississauga, On L4Z 1M7
School Times: 8:45 AM - 3:15 PM	Student Population: 209
No. of School Buses: 2	Bussed
School:	Address:
School Times:	Student Population:
No. of School Buses:	

Location: (Please identify the location with reference of nearest intersection. Indicate nearest school and address)
Rathburn Rd. & Meadows Blvd.

Date of Inspection: 2016 11 01 Inspection Time: 8:15 AM - 3:15 PM Requested By: Supervisor-Crossing Guards

Prepared By: V. Mansour Request For: Retention of School Crossing Guard

Observers

File Number: RT.10 File Number: RT.10 Ward: Ward 4

Observed By: T. Coulson	<input type="checkbox"/> AM <input type="checkbox"/> PM <input checked="" type="checkbox"/> AM & PM
Observed By: A. Bhaskar	<input type="checkbox"/> AM <input type="checkbox"/> PM <input checked="" type="checkbox"/> AM & PM
Observed By: S. Duffin	<input type="checkbox"/> AM <input type="checkbox"/> PM <input checked="" type="checkbox"/> AM & PM
Observed By: V. Mansour	<input type="checkbox"/> AM <input type="checkbox"/> PM <input checked="" type="checkbox"/> AM & PM
Observed By:	<input type="checkbox"/> AM <input type="checkbox"/> PM <input type="checkbox"/> AM & PM
Observed By:	<input type="checkbox"/> AM <input type="checkbox"/> PM <input type="checkbox"/> AM & PM

Details

Weather Conditions: AM: Dry Sunny Rain Snow Other: 9 C
PM: Dry Sunny Rain Snow Other: 16 C

Type of Crossing: 4 Way Intersection 3 Way Intersection Midblock (i.e., not an intersection)

Type of Control: Traffic Lights Yield Signs No Control
 Stop Signs (Traffic is stopped on one street only) All Way Stop (Traffic is stopped in all directions)

Site Conditions

School Signs: School Area Signs School Crossing Signs Parking/Stopping Prohibition

Posted Speed Limit: 40 km/hr 50 km/h 60 km/hr Other:

Visibility of Crossing Pedestrians: Poor Fair Good Comments:

Sight Obstructions: Hedges Trees Fences Bus Shelter
 Newspaper Boxes Other (Specify):

Road Grade: Flat Incline Decline

Road Geometrics: Straight Rathburn Rd. Curved Meadows Blvd. S. Comments:

Road Width: N/A feet/metres Curb to Curb: feet/metres Curb to Median: feet/metres

Road Conditions: AM: Dry Wet Snow Covered Ice
PM: Dry Wet Snow Covered Ice

Sidewalks: Not Present North South East West

Proximity to School: In Front of Within 650 feet/metres

Route Survey: Shopping Area Construction Driveway Parked Vehicle(s)
 Transit Bus Stop Underpass Within feet/metres Other (specify):

Comments / Conflicts:

5.29

Crossing Guard Warrant Survey

Location: Rathburn Rd. & Meadows Blvd.

Safe Gap Time Safe Gap Time Calculation (if applicable): $\left(\frac{W}{3.5} + 4 \right)$ = sec.
 Signalized Intersection turning traffic count

Morning Intervals

Time (AM)	# of Peds	# of Peds	Gaps	# of Gaps
7:45 - 7:50	WEST	NORTH		
7:50 - 7:55				
7:55 - 8:00			WEST LEG NORTH LEG	
8:00 - 8:05				
8:05 - 8:10				
8:10 - 8:15				
8:15 - 8:20			, , 0, ,0	
8:20 - 8:25			, , ,	
8:25 - 8:30			, , , ,	
8:30 - 8:35			, , , ,	
8:35 - 8:40	P, P,	P	, ,	
8:40 - 8:45			0, , , ,	
8:45 - 8:50				
8:50 - 8:55				
8:55 - 9:00				

Afternoon Intervals

Time (PM)	# of Peds	# of Peds	Gaps	# of Gaps
2:45 - 2:50	WEST	NORTH		
2:50 - 2:55				
2:55 - 3:00			WEST LEG NORTH LEG	
3:00 - 3:05				
3:05 - 3:10				
3:10 - 3:15				
3:15 - 3:20			,0, , , ,	
3:20 - 3:25	, P		, , , , , ,0	
3:25 - 3:30	P,		0, , , , ,	
3:30 - 3:35	,		, , ,0, ,	
3:35 - 3:40			, ,0, , , ,	
3:40 - 3:45			, , , , , ,0	
3:45 - 3:50				
3:50 - 3:55				
3:55 - 4:00			* EAST SIDE	

Recommendations

Observations

Volume of Traffic (see Intersection Plan):
 AM: Heavy Light Intermittant PM: Heavy Light Intermittant

Number of Crossing Pedestrians:
 AM: North East South West PM: North East South West

Turning Traffic:
 AM: Heavy Light Intermittant PM: Heavy Light Intermittant

Additional Comments/Conflicts

PAVEMENT MARKINGS ARE VISIBLE.

TURNING TRAFFIC IS LIGHT.

VISIBILITY FOR TURNING TRAFFIC IS GOOD.

TRAFFIC IS COURTEOUS TO CROSSING PEDESTRIANS.

NO YOUNGER STUDENTS CROSSING.

Additional Recommendations

Site Inspection Report



Corporate Services
Office of the City Clerk

Site	
School: St. Charles Garnier Catholic School	Address: 4233 Central Parkway E Mississauga, On L4Z 1M7
School Times: 8:45 AM 3:15 PM	Student Population: 209
No. of School Buses: 2	Bussed
School:	Address:
School Times:	Student Population:
No. of School Buses:	

Location: (Please identify the location with reference of nearest intersection. Indicate nearest school and address)
 [Rathburn Rd. & Meadows Blvd.]

Date of Inspection: 2016 11 21 Inspection Time: 8:15 AM 3:15 PM Requested By: Supervisor-Crossing Guards

Prepared By: V. Mansour Request For: Retention of School Crossing Guard

Observers	
File Number: RT.10	Ward: Ward 4
Observed By: T. Coulson	<input type="checkbox"/> AM <input type="checkbox"/> PM <input checked="" type="checkbox"/> AM & PM
Observed By: A. Syed	<input type="checkbox"/> AM <input type="checkbox"/> PM <input checked="" type="checkbox"/> AM & PM
Observed By: S. Duffin	<input type="checkbox"/> AM <input type="checkbox"/> PM <input checked="" type="checkbox"/> AM & PM
Observed By: V. Mansour	<input type="checkbox"/> AM <input type="checkbox"/> PM <input checked="" type="checkbox"/> AM & PM
Observed By: B. Butt	<input checked="" type="checkbox"/> AM <input type="checkbox"/> PM <input type="checkbox"/> AM & PM
Observed By: S. Kumra	<input type="checkbox"/> AM <input checked="" type="checkbox"/> PM <input type="checkbox"/> AM & PM

Details	
Weather Conditions:	AM: <input checked="" type="checkbox"/> Dry <input checked="" type="checkbox"/> Sunny <input type="checkbox"/> Rain <input type="checkbox"/> Snow <input type="checkbox"/> Other: 0 C
	PM: <input checked="" type="checkbox"/> Dry <input type="checkbox"/> Sunny <input type="checkbox"/> Rain <input type="checkbox"/> Snow <input type="checkbox"/> Other: 1 C
Type of Crossing:	<input checked="" type="checkbox"/> 4 Way Intersection <input type="checkbox"/> 3 Way Intersection <input type="checkbox"/> Midblock (i.e., not an intersection)
Type of Control:	<input checked="" type="checkbox"/> Traffic Lights <input type="checkbox"/> Yield Signs <input type="checkbox"/> No Control
	<input type="checkbox"/> Stop Signs (Traffic is stopped on one street only) <input type="checkbox"/> All Way Stop (Traffic is stopped in all directions)

Site Conditions	
School Signs:	<input type="checkbox"/> School Area Signs <input type="checkbox"/> School Crossing Signs <input type="checkbox"/> Parking/Stopping Prohibition
Posted Speed Limit:	<input type="checkbox"/> 40 km/hr <input checked="" type="checkbox"/> 50 km/h <input type="checkbox"/> 60 km/hr <input type="checkbox"/> Other:
Visibility of Crossing Pedestrians:	<input type="checkbox"/> Poor <input type="checkbox"/> Fair <input checked="" type="checkbox"/> Good Comments:
Sight Obstructions:	<input type="checkbox"/> Hedges <input type="checkbox"/> Trees <input type="checkbox"/> Fences <input type="checkbox"/> Bus Shelter
	<input type="checkbox"/> Newspaper Boxes <input type="checkbox"/> Other (Specify):
Road Grade:	<input checked="" type="checkbox"/> Flat <input type="checkbox"/> Incline <input type="checkbox"/> Decline
Road Geometrics:	<input checked="" type="checkbox"/> Straight [Rathburn Rd.] <input checked="" type="checkbox"/> Curved [Meadows Blvd. S.] Comments:
Road Width:	N/A feet/metres Curb to Curb: feet/metres Curb to Median: feet/metres
Road Conditions:	AM: <input checked="" type="checkbox"/> Dry <input type="checkbox"/> Wet <input type="checkbox"/> Snow Covered <input type="checkbox"/> Ice
	PM: <input checked="" type="checkbox"/> Dry <input type="checkbox"/> Wet <input type="checkbox"/> Snow Covered <input type="checkbox"/> Ice
Sidewalks:	<input type="checkbox"/> Not Present <input checked="" type="checkbox"/> North <input checked="" type="checkbox"/> South <input checked="" type="checkbox"/> East <input checked="" type="checkbox"/> West
Proximity to School:	<input type="checkbox"/> In Front of <input checked="" type="checkbox"/> Within 650 feet/metres
Route Survey:	<input type="checkbox"/> Shopping Area <input type="checkbox"/> Construction <input type="checkbox"/> Driveway <input type="checkbox"/> Parked Vehicle(s)
	<input type="checkbox"/> Transit Bus Stop <input type="checkbox"/> Underpass Within feet/metres Other (specify):
Comments / Conflicts:	

Crossing Guard Warrant Survey

Location: Rathburn Rd. & Meadows Blvd.

Safe Gap Time Safe Gap Time Calculation (if applicable): $\left(\frac{W}{3.5} + 4\right)$ = sec.
 Signalized Intersection turning traffic count

Morning Intervals

Time (AM)	# of Peds	# of Peds	Gaps	# of Gaps
7:45 - 7:50	WEST	NORTH		
7:50 - 7:55				
7:55 - 8:00			WEST LEG NORTH LEG	
8:00 - 8:05				
8:05 - 8:10				
8:10 - 8:15				
8:15 - 8:20			, 0,	
8:20 - 8:25			, ,	
8:25 - 8:30			0, , , ,	
8:30 - 8:35			, , , ,	
8:35 - 8:40	IP		, , ,	
8:40 - 8:45			0,0, , ,	
8:45 - 8:50				
8:50 - 8:55				
8:55 - 9:00				

Afternoon Intervals

Time (PM)	# of Peds	# of Peds	Gaps	# of Gaps
2:45 - 2:50	WEST	NORTH		
2:50 - 2:55				
2:55 - 3:00			WEST LEG NORTH LEG	
3:00 - 3:05				
3:05 - 3:10				
3:10 - 3:15				
3:15 - 3:20			0,0, , , ,	
3:20 - 3:25			, ,0,0 , ,	
3:25 - 3:30			0, , , , ,	
3:30 - 3:35	IP,		0, ,0, , , ,0	
3:35 - 3:40			0, ,	
3:40 - 3:45			, ,0 , , ,	
3:45 - 3:50				
3:50 - 3:55				
3:55 - 4:00				

Recommendations

SEE ATTACHED

Observations

Volume of Traffic (see Intersection Plan):
 AM: Heavy Light Intermittant PM: Heavy Light Intermittant

Number of Crossing Pedestrians:
 AM: North East South West 2 PM: North East South West 4

Turning Traffic:
 AM: Heavy Light Intermittant PM: Heavy Light Intermittant

5.2e

Additional Comments/Conflicts

PAVEMENT MARKINGS ARE VISIBLE.

TURNING TRAFFIC IS LIGHT.

TRAFFIC IS COURTEOUS TO CROSSING PEDESTRIANS.

VISIBILITY FOR TURNING TRAFFIC IS GOOD.

NO YOUNGER STUDENTS CROSSING.

Additional Recommendations

1) THAT THE WARRANTS ARE NOT MET FOR THE RETENTION OF A SCHOOL CROSSING GUARD.

2) THAT THE CROSSING BE CLOSED AT THE MARCH BREAK.

3) THAT THE PRINCIPAL BE REQUESTED TO NOTIFY THE PARENTS AND STUDENTS THAT THE CROSSING WILL BE CLOSED AT THE MARCH BREAK.

Traffic Safety Council
NOV 30 2016

Corporate Services
 Office of the City Clerk

Site Inspection Report



Site	
School: St. Pio of Pietrelcina Catholic School	Address: 4765 Huron Heights Dr. Mississauga, On L4Z 4G9
School Times: 8:45 AM 3:15 PM	Student Population: 458
No. of School Buses: 19	Bussed
School:	Address:
School Times:	Student Population:
No. of School Buses:	

Location: (Please identify the location with reference of nearest intersection. Indicate nearest school and address)
 Huron Heights Drive & Elia Avenue

Date of Inspection: 2016 11 02	Inspection Time: 8:15 AM 3:15 PM	Requested By: Principal
Prepared By: D. Yaunan	Request For: Placement of Crossing Guard and Safety Review	

Observers		
File Number: RT,10	File Number: RT,10	Ward: Ward 4
Observed By: T. Coulson	<input type="checkbox"/> AM <input type="checkbox"/> PM <input checked="" type="checkbox"/> AM & PM	
Observed By: D. Suess	<input type="checkbox"/> AM <input type="checkbox"/> PM <input checked="" type="checkbox"/> AM & PM	
Observed By: B. Bull	<input checked="" type="checkbox"/> AM <input type="checkbox"/> PM <input type="checkbox"/> AM & PM	
Observed By: A. Syed	<input type="checkbox"/> AM <input checked="" type="checkbox"/> PM <input type="checkbox"/> AM & PM	
Observed By: S. Duffin	<input type="checkbox"/> AM <input type="checkbox"/> PM <input checked="" type="checkbox"/> AM & PM	
Observed By: D. Yaunan	<input type="checkbox"/> AM <input type="checkbox"/> PM <input checked="" type="checkbox"/> AM & PM	

Details	
Weather Conditions:	AM: <input checked="" type="checkbox"/> Dry <input type="checkbox"/> Sunny <input type="checkbox"/> Rain <input type="checkbox"/> Snow <input type="checkbox"/> Other: 13 C
	PM: <input type="checkbox"/> Dry <input type="checkbox"/> Sunny <input type="checkbox"/> Rain <input type="checkbox"/> Snow <input type="checkbox"/> Other: 17 C
Type of Crossing:	<input type="checkbox"/> 4 Way Intersection <input checked="" type="checkbox"/> 3 Way Intersection <input type="checkbox"/> Midblock (i.e., not an intersection)
Type of Control:	<input type="checkbox"/> Traffic Lights <input type="checkbox"/> Yield Signs <input type="checkbox"/> No Control <input type="checkbox"/> Stop Signs (Traffic is stopped on one street only) <input checked="" type="checkbox"/> All Way Stop (Traffic is stopped in all directions)

Site Conditions	
School Signs:	<input checked="" type="checkbox"/> School Area Signs <input type="checkbox"/> School Crossing Signs <input type="checkbox"/> Parking/Stopping Prohibition
Posted Speed Limit:	<input checked="" type="checkbox"/> 40 km/hr <input type="checkbox"/> 50 km/h <input type="checkbox"/> 60 km/hr <input type="checkbox"/> Other:
Visibility of Crossing Pedestrians:	<input type="checkbox"/> Poor <input type="checkbox"/> Fair <input checked="" type="checkbox"/> Good <input type="checkbox"/> Comments:
Sight Obstructions:	<input type="checkbox"/> Hedges <input type="checkbox"/> Trees <input type="checkbox"/> Fences <input type="checkbox"/> Bus Shelter <input type="checkbox"/> Newspaper Boxes <input type="checkbox"/> Other (Specify):
Road Grade:	<input checked="" type="checkbox"/> Flat <input type="checkbox"/> Incline <input type="checkbox"/> Decline
Road Geometrics:	<input checked="" type="checkbox"/> Straight <input type="checkbox"/> Curved <input type="checkbox"/> Comments:
Road Width:	SOUTH LEG WEST LEG 38 45 feet/metres Curb to Curb: feet/metres Curb to Median: feet/metres
Road Conditions:	AM: <input checked="" type="checkbox"/> Dry <input type="checkbox"/> Wet <input type="checkbox"/> Snow Covered <input type="checkbox"/> Ice PM: <input type="checkbox"/> Dry <input checked="" type="checkbox"/> Wet <input type="checkbox"/> Snow Covered <input type="checkbox"/> Ice
Sidewalks:	<input type="checkbox"/> Not Present <input checked="" type="checkbox"/> North <input checked="" type="checkbox"/> South <input checked="" type="checkbox"/> East <input checked="" type="checkbox"/> West
Proximity to School:	<input type="checkbox"/> In Front of <input checked="" type="checkbox"/> Within 84 feet/metres
Route Survey:	<input type="checkbox"/> Shopping Area <input type="checkbox"/> Construction <input type="checkbox"/> Driveway <input type="checkbox"/> Parked Vehicle(s) <input type="checkbox"/> Transit Bus Stop <input type="checkbox"/> Underpass Within feet/metres Other (specify):
Comments / Conflicts:	

5.3c

Additional Comments/Conflicts

OBSERVED ROLLING STOPS.

MOST STUDENTS CROSSED WITH PARENTS.

NO CONFLICTS OBSERVED.

THIS IS A FRENCH IMMERSION SCHOOL; NO BUSSING FOR FRENCH IMMERSION STUDENTS.

IN THE AM THERE IS A STEADY STREAM OF TRAFFIC THROUGH THE KISS AND RIDE FROM 8:30 TO 9:00, EVEN THOUGH SCHOOL ENTRY IS 8:45.

TRAFFIC MUCH LIGHTER DURING THE PM.

PLASP AT ST. PIO OF PIETRELCINA CATHOLIC SCHOOL.

PARKING ENFORCEMENT PRESENT DURING THE PM.

CORRECT SIGNAGE IN PLACE.

Additional Recommendations

Site Inspection Report



Traffic Safety Council
NOV 30 2016

Corporate Services
Office of the City Clerk

Site	
School: Cashmere Public School	Address: 2455 Cashmere Ave. Mississauga, On L5B 2M7
School Times: 8:45 AM 3:15 PM	Student Population: 445
No. of School Buses: 301	Bussed
School: []	Address: []
School Times: [] AM [] PM	Student Population: []
No. of School Buses: []	

Location: (Please identify the location with reference of nearest intersection. Indicate nearest school and address)
 Mavis Rd. & Paisley Blvd.

Date of Inspection: 2016 11 04 Inspection Time: 8:15 AM 3:15 PM Requested By: S I - October 4, 2016

Prepared By: V. Mansour Request For: Placement of a Crossing Guard - 2nd Inspection

Observers	
File Number: RT.10	Ward: Ward 7
Observed By: T. Coulson	<input type="checkbox"/> AM <input type="checkbox"/> PM <input checked="" type="checkbox"/> AM & PM
Observed By: V. Mansour	<input type="checkbox"/> AM <input type="checkbox"/> PM <input checked="" type="checkbox"/> AM & PM
Observed By: S. Beniuk	<input type="checkbox"/> AM <input checked="" type="checkbox"/> PM <input type="checkbox"/> AM & PM
Observed By: S. Duffin	<input type="checkbox"/> AM <input checked="" type="checkbox"/> PM <input type="checkbox"/> AM & PM
Observed By: M. Macina	<input type="checkbox"/> AM <input checked="" type="checkbox"/> PM <input type="checkbox"/> AM & PM
Observed By: []	<input type="checkbox"/> AM <input type="checkbox"/> PM <input type="checkbox"/> AM & PM

Details	
Weather Conditions:	AM: <input type="checkbox"/> Dry <input checked="" type="checkbox"/> Sunny <input type="checkbox"/> Rain <input type="checkbox"/> Snow <input type="checkbox"/> Other: 4 C
	PM: <input type="checkbox"/> Dry <input checked="" type="checkbox"/> Sunny <input type="checkbox"/> Rain <input type="checkbox"/> Snow <input type="checkbox"/> Other: 10 C
Type of Crossing:	<input checked="" type="checkbox"/> 4 Way Intersection <input type="checkbox"/> 3 Way Intersection <input type="checkbox"/> Midblock (i.e., not an intersection)
Type of Control:	<input checked="" type="checkbox"/> Traffic Lights <input type="checkbox"/> Yield Signs <input type="checkbox"/> No Control <input type="checkbox"/> Stop Signs (Traffic is stopped on one street only) <input type="checkbox"/> All Way Stop (Traffic is stopped in all directions)

Site Conditions	
School Signs:	<input type="checkbox"/> School Area Signs <input type="checkbox"/> School Crossing Signs <input type="checkbox"/> Parking/Stopping Prohibition
Posted Speed Limit:	<input type="checkbox"/> 40 km/hr <input checked="" type="checkbox"/> 50 km/h <input checked="" type="checkbox"/> 60 km/hr <input type="checkbox"/> Other: []
Visibility of Crossing Pedestrians:	<input type="checkbox"/> Poor <input type="checkbox"/> Fair <input checked="" type="checkbox"/> Good <input type="checkbox"/> Comments: []
Sight Obstructions:	<input type="checkbox"/> Hedges <input type="checkbox"/> Trees <input type="checkbox"/> Fences <input type="checkbox"/> Bus Shelter <input type="checkbox"/> Newspaper Boxes <input type="checkbox"/> Other (Specify): []
Road Grade:	<input type="checkbox"/> Flat <input checked="" type="checkbox"/> Incline North <input type="checkbox"/> Decline []
Road Geometrics:	<input checked="" type="checkbox"/> Straight <input type="checkbox"/> Curved <input type="checkbox"/> Comments: []
Road Width:	N/A feet/metres Curb to Curb: [] feet/metres Curb to Median: [] feet/metres
Road Conditions:	AM: <input checked="" type="checkbox"/> Dry <input type="checkbox"/> Wet <input type="checkbox"/> Snow Covered <input type="checkbox"/> Ice PM: <input checked="" type="checkbox"/> Dry <input type="checkbox"/> Wet <input type="checkbox"/> Snow Covered <input type="checkbox"/> Ice
Sidewalks:	<input type="checkbox"/> Not Present <input checked="" type="checkbox"/> North <input checked="" type="checkbox"/> South <input checked="" type="checkbox"/> East <input checked="" type="checkbox"/> West
Proximity to School:	<input type="checkbox"/> In Front of <input checked="" type="checkbox"/> Within 240 feet/metres
Route Survey:	<input type="checkbox"/> Shopping Area <input type="checkbox"/> Construction <input type="checkbox"/> Driveway <input type="checkbox"/> Parked Vehicle(s) <input type="checkbox"/> Transit Bus Stop <input type="checkbox"/> Underpass Within [] feet/metres Other (specify): []
Comments / Conflicts:	[]

5.49

Crossing Guard Warrant Survey

Location: Mavis Rd. & Paisley Blvd.

Safe Gap Time Safe Gap Time Calculation (if applicable): $\left(\frac{W}{3.5} + 4\right)$ = sec.
 Signalized Intersection turning traffic count

Morning Intervals

Time (AM)	# of Peds	# of Conflicts	Gaps	# of Gaps
7:45 - 7:50				
7:50 - 7:55				
7:55 - 8:00				
8:00 - 8:05				
8:05 - 8:10				
8:10 - 8:15				
8:15 - 8:20			0,0	
8:20 - 8:25			0,1	
8:25 - 8:30			0,0,11	
8:30 - 8:35	1P,1P		111,0	
8:35 - 8:40	1P,1P		1,1,0	
8:40 - 8:45			1,0	
8:45 - 8:50				
8:50 - 8:55				
8:55 - 9:00				

Afternoon Intervals

Time (PM)	# of Peds	# of Conflicts	Gaps	# of Gaps
2:45 - 2:50				
2:50 - 2:55				
2:55 - 3:00				
3:00 - 3:05				
3:05 - 3:10				
3:10 - 3:15				
3:15 - 3:20	1,11P		0,1,11	
3:20 - 3:25	1		1,1,1	
3:25 - 3:30	1P		0,1,1	
3:30 - 3:35			1,1,0,1	
3:35 - 3:40			0,1,1	
3:40 - 3:45			1	
3:45 - 3:50				
3:50 - 3:55				
3:55 - 4:00				

Recommendations

1) THAT THE WARRANTS ARE NOT MET FOR THE PLACEMENT OF A SCHOOL CROSSING GUARD.

Observations

Volume of Traffic (see Intersection Plan):
 AM: Heavy Light Intermittant PM: Heavy Light Intermittant

Number of Crossing Pedestrians:
 AM: North East 1 South 3 West PM: North 1 East South 4 West

Turning Traffic:
 AM: Heavy Light Intermittant PM: Heavy Light Intermittant

Additional Comments/Conflicts

TRAFFIC SIGNAL TIMING HAS BEEN ADJUSTED TO ALLOW AMPLE TIME FOR CROSSING STUDENTS.

THE ZEBRA STRIPES AT THE INTERSECTION HAVE BEEN REFRESHED AND EXPANDED.

THE TRAFFIC IS COURTEOUS TO CROSSING PEDESTRIANS.

GOOD STOPPING COMPLIANCE.

Additional Recommendations

Site Inspection Report



Traffic Safety Council
NOV 30 2016

Corporate Services
 Office of the City Clerk

Site	
School: St. Therese of the Child Jesus	Address: 6930 Forest Park Drive Mississauga, On L5N 6X7
School Times: 9:15 AM 3:45 PM	Student Population: 566
No. of School Buses: 227	Bussed
School:	Address:
School Times:	Student Population:
No. of School Buses:	

Location: (Please identify the location with reference of nearest intersection. Indicate nearest school and address)
 Forest Park Dr. & Bloomfield Dr.

Date of Inspection: 2016 11 08 Inspection Time: 8:45 AM 3:45 PM Requested By: S | - October 6, 2016

Prepared By: V. Mansour Request For: Placement of a School Crossing Guard

Observers

Files Number: RT.10 File Number: RT.10 Ward: Ward 10

Observed By: A. Syed	<input type="checkbox"/> AM <input checked="" type="checkbox"/> PM <input type="checkbox"/> AM & PM
Observed By: A. Bhaskar	<input checked="" type="checkbox"/> AM <input type="checkbox"/> PM <input type="checkbox"/> AM & PM
Observed By: S. Duffin	<input type="checkbox"/> AM <input type="checkbox"/> PM <input checked="" type="checkbox"/> AM & PM
Observed By: V. Mansour	<input type="checkbox"/> AM <input type="checkbox"/> PM <input checked="" type="checkbox"/> AM & PM
Observed By: M. Sherwani	<input checked="" type="checkbox"/> AM <input type="checkbox"/> PM <input type="checkbox"/> AM & PM
Observed By:	<input type="checkbox"/> AM <input type="checkbox"/> PM <input type="checkbox"/> AM & PM

Details

Weather Conditions: AM: Dry Sunny Rain Snow Other: 10 C
 PM: Dry Sunny Rain Snow Other: 14 C

Type of Crossing: 4 Way Intersection 3-Way Intersection Midblock (i.e., not an intersection)

Type of Control: Traffic Lights Yield Signs No Control
 Stop Signs (Traffic is stopped on one street only) All Way Stop (Traffic is stopped in all directions)

Site Conditions

School Signs: School Area Signs School Crossing Signs Parking/Stopping Prohibition

Posted Speed Limit: 40 km/hr 50 km/h 60 km/hr Other:

Visibility of Crossing Pedestrians: Poor Fair Good Comments:

Sight Obstructions: Hedges Trees Fences Bus Shelter
 Newspaper Boxes Other (Specify):

Road Grade: Flat Incline Decline

Road Geometrics: Straight Curved Comments:

Road Width: 52 feet/metres Curb to Curb: feet/metres Curb to Median: feet/metres

Road Conditions: AM: Dry Wet Snow Covered Ice
 PM: Dry Wet Snow Covered Ice

Sidewalks: Not Present North South East West

Proximity to School: In Front of Within feet/metres

Route Survey: Shopping Area Construction School Exit Parked Vehicle(s)
 Transit Bus Stop Underpass Within feet/metres **Driveway**

Comments / Conflicts:

559

Crossing Guard Warrant Survey

Location: Forest Park Dr. & Bloomfield Dr.

Safe Gap Time Safe Gap Time Calculation (if applicable): $\left(\frac{W}{3.5} + 4\right)$ = sec.
 Signalized Intersection turning traffic count

Morning Intervals

Time (AM)	# of Peds	# of Peds	Gaps	# of Gaps
8:45 - 8:50			19,IIIIIIIIII,19,II,20,IIIIII	3
8:50 - 8:55			26,I,33,IIII,81,IIIIII	6
8:55 - 9:00	I,IP		II,23,II,48,IIIIIIIIII	3
9:00 - 9:05	II,IP,I,II	IIPII	IIIIIIII,20,IIIIIIIIII	1
9:05 - 9:10	IIII,II,IP	II,II,IP,I,5	IIIIIIIIII,26,IIII	1
9:10 - 9:15	I,IIIP,IP		I,25,I,28,IIII,22,IIII,35,II	4
9:15 - 9:20			II,59,II,52,57,II	8
8:20 - 8:25				
8:25 - 8:30				
8:30 - 8:35				
8:35 - 8:40				
8:40 - 8:45				
8:45 - 8:50				
8:50 - 8:55				
8:55 - 9:00				

Afternoon Intervals

Time (PM)	# of Peds	# of Peds	Gaps	# of Gaps
3:45 - 3:50	IP,IP,I	IIII	27,IIIIIIIIIIIIIIIIIIII	1
3:50 - 3:55	15	II,IP	II,26,IIIIIIIIIIIIIIIIIIII	1
3:55 - 4:00	IIIP		IIII,39,II,41,I,28,I,26,II,44	8
4:00 - 4:05			III,33,IIII,27,II,34,IIII,34,IIII,32,II	5
4:05 - 4:10			III,21,IIIIII,44,44,35,IIIIII	6
4:10 - 4:15				
4:15 - 4:20				
3:20 - 3:25				
3:25 - 3:30				
3:30 - 3:35				
3:35 - 3:40				
3:40 - 3:45				
3:45 - 3:50				
3:50 - 3:55				
3:55 - 4:00				

Recommendations

1) THAT THE WARRANTS HAVE BEEN MET FOR THE PLACEMENT OF A SCHOOL CROSSING GUARD.

Observations

Volume of Traffic (see Intersection Plan): **TO**
AM: Heavy Light Intermittant PM: Heavy Light Intermittant

Number of Crossing Pedestrians:
AM: North East South West PM: North East South West

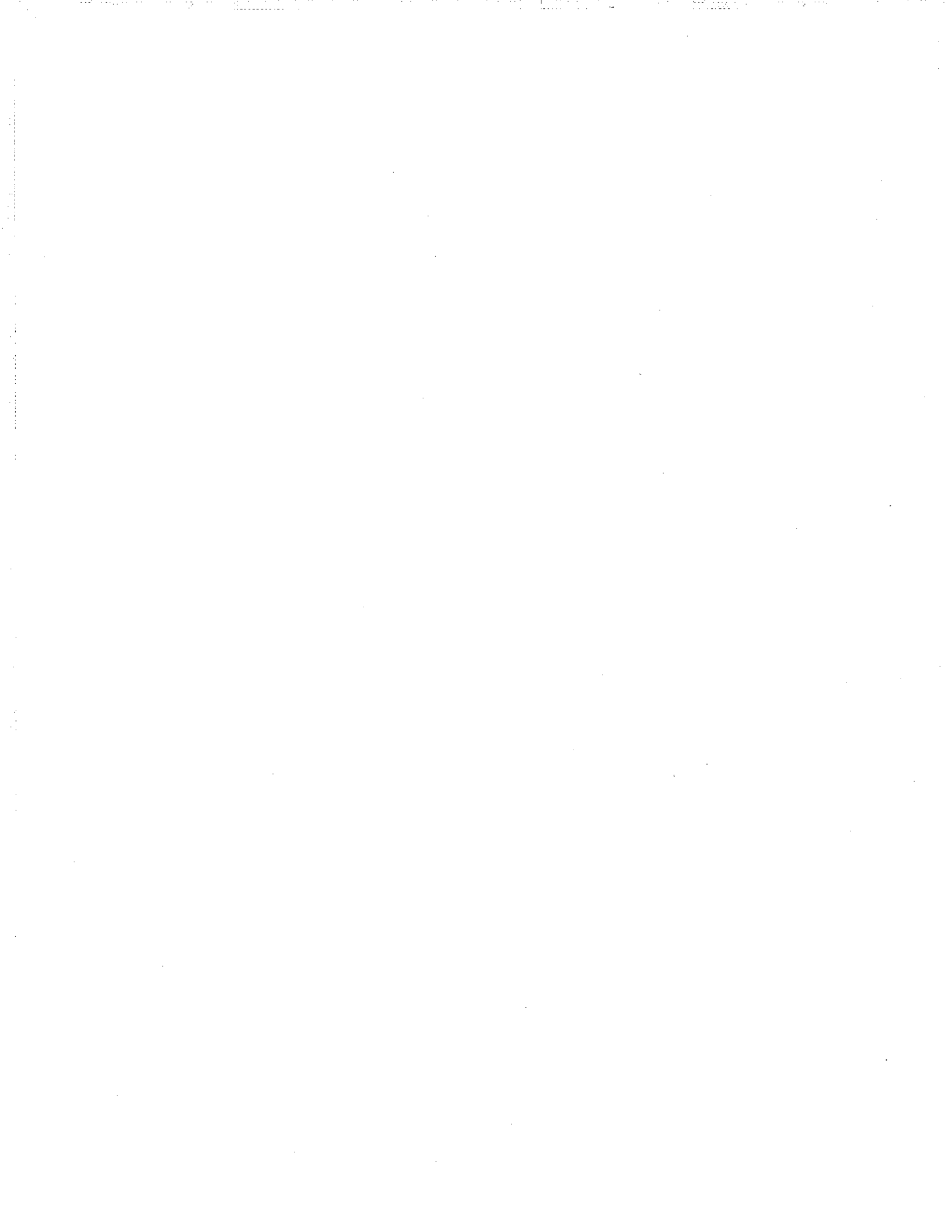
Turning Traffic:
AM: Heavy Light Intermittant PM: Heavy Light Intermittant

Additional Comments/Conflicts

TRAFFIC IS COURTEOUS TO CROSSING PEDESTRIANS.

TRAFFIC IS SCHOOL RELATED.

Additional Recommendations



5.6

Site Inspection Report



Traffic Safety Council
NOV 30 2016

Corporate Services
Office of the City Clerk

Site	
School: Hillside Public School	Address: 1290 Kelly Rd. Mississauga, On L5J 3V1
School Times: 8:40 AM 3:00 PM	Student Population: 562
No. of School Buses: 70	Bussed
School:	Address:
School Times:	Student Population:
No. of School Buses:	

Location: (Please identify the location with reference of nearest intersection. Indicate nearest school and address)
 Kelly Rd & Truscott Drive

Date of Inspection: 2016 11 10 Inspection Time: 8:10 AM 3:00 PM Requested By: S I - September 26, 2016

Prepared By: D. Yaunan Request For: Placement of a School Crossing Guard

Observers

File Number: RT.10 File Number: RT.10 Ward: Ward 2

Observed By: S. Duffin	<input type="checkbox"/> AM	<input type="checkbox"/> PM	<input checked="" type="checkbox"/> AM & PM
Observed By: B. Butt	<input checked="" type="checkbox"/> AM	<input type="checkbox"/> PM	<input type="checkbox"/> AM & PM
Observed By: D. Yaunan	<input type="checkbox"/> AM	<input type="checkbox"/> PM	<input checked="" type="checkbox"/> AM & PM
Observed By: S. Beniuk	<input checked="" type="checkbox"/> AM	<input type="checkbox"/> PM	<input type="checkbox"/> AM & PM
Observed By: A. Syed	<input type="checkbox"/> AM	<input checked="" type="checkbox"/> PM	<input type="checkbox"/> AM & PM
Observed By: S. Kumra	<input type="checkbox"/> AM	<input checked="" type="checkbox"/> PM	<input type="checkbox"/> AM & PM

Details

Weather Conditions: AM: Dry Sunny Rain Snow Other: 6 C
 PM: Dry Sunny Rain Snow Other: 15 C

Type of Crossing: 4 Way Intersection 3 Way Intersection Midblock (i.e., not an intersection)

Type of Control: Traffic Lights Yield Signs No Control
 Stop Signs (Traffic is stopped on one street only) All Way Stop (Traffic is stopped in all directions)

Site Conditions

School Signs: School Area Signs School Crossing Signs Parking/Stopping Prohibition

Posted Speed Limit: 40 km/hr 50 km/h 60 km/hr Other:

Visibility of Crossing Pedestrians: Poor Fair Good Comments:

Sight Obstructions: Hedges Trees Fences Bus Shelter
 Newspaper Boxes Other (Specify):

Road Grade: Flat Incline Decline

Road Geometrics: Straight Curved Comments:

Road Width: N/A feet/metres Curb to Curb: feet/metres Curb to Median: feet/metres

Road Conditions: AM: Dry Wet Snow Covered Ice
 PM: Dry Wet Snow Covered Ice

Sidewalks: Not Present North South East West

Proximity to School: In Front of Within 260 feet/metres

Route Survey: Shopping Area Construction Driveway Parked Vehicle(s)
 Transit Bus Stop Underpass Within feet/metres Other (specify):

Comments / Conflicts: CHURCH DRIVEWAY ACTS AS FOURTH LEG OF INTERSECTION.

5.6a

Crossing Guard Warrant Survey

Location: Kelly Rd & Truscott Drive

Safe Gap Time Safe Gap Time Calculation (if applicable): $\left(\frac{W}{3.5} + 4\right)$ = sec.
 Signalized intersection turning traffic count

Morning Intervals

Time (AM)	# of Peds	# of Peds	Gaps		# of Gaps
7:45 - 7:50					
7:50 - 7:55					
7:55 - 8:00					
8:00 - 8:05			WEST LEG	EAST LEG	
8:05 - 8:10					
8:10 - 8:15					
8:15 - 8:20			,	,0	
8:20 - 8:25	,		,0,0,0	0,0, ,	
8:25 - 8:30			0, ,	,	
8:30 - 8:35	, ,		,0, ,0	0, , ,	
8:35 - 8:40			, , ,	, , ,	
8:40 - 8:45			, ,0,	, ,0,	
8:45 - 8:50					
8:50 - 8:55					
8:55 - 9:00					

Afternoon Intervals

Time (PM)	# of Peds	# of Peds	Gaps		# of Gaps
2:45 - 2:50					
2:50 - 2:55			WEST LEG	EAST LEG	
2:55 - 3:00					
3:00 - 3:05			0,0,	0, , ,	
3:05 - 3:10	P,		0, , ,	0, , ,	
3:10 - 3:15	,8,	,15	, ,0,0	,0, ,0	
3:15 - 3:20	,		0, ,0,	,0,0,0	
3:20 - 3:25			,0, ,0	0, ,0,0	
3:25 - 3:30			, ,0,	, ,0,0	
3:30 - 3:35					
3:35 - 3:40					
3:40 - 3:45					
3:45 - 3:50					
3:50 - 3:55					
3:55 - 4:00					

Recommendations

1) THAT THE WARRANTS FOR PLACEMENT OF A SCHOOL CROSSING GUARD HAVE NOT BEEN MET.

Observations

Volume of Traffic (see Intersection Plan):
 AM: Heavy Light Intermittant PM: Heavy Light Intermittant

Number of Crossing Pedestrians:
 AM: North East South West PM: North East South West

Turning Traffic:
 AM: Heavy Light Intermittant PM: Heavy Light Intermittant

Additional Comments/Conflicts

ALL THE STUDENTS CROSSED WITH PARENTS.
THE INTERSECTION IS WELL MARKED WITH ZEBRA STRIPES IN PLACE.
THE DRIVERS ARE COURTEOUS TO CROSSING PEDESTRIANS.
THE STUDENTS ARE USING THE PED BUTTON TO CROSS THE INTERSECTION.

Additional Recommendations

Site Inspection Report



Traffic Safety Council
NOV 30 2016

Corporate Services
Office of the City Clerk

Site	
School: Hillside Public School	Address: 1290 Kelly Rd. Mississauga, On L5J 3V1
School Times: 8:40 AM - 3:00 PM	Student Population: 562
No. of School Buses: 70	Bussed
School:	Address:
School Times:	Student Population:
No. of School Buses:	

Location: (Please identify the location with reference of nearest intersection. Indicate nearest school and address)
 Kelly Rd. & Brookhurst Rd.

Date of Inspection: 2016 11 22 Inspection Time: 8:10 AM 3:00 PM Requested By: S I - September 21, 2016

Prepared By: P. Westbrook Request For: Placement of a School Crossing Guard

Observers	
File Number: RT.10	Ward: Ward 2
Observed By: A. Bhaskar	<input type="checkbox"/> AM <input type="checkbox"/> PM <input checked="" type="checkbox"/> AM & PM
Observed By: B. Butt	<input checked="" type="checkbox"/> AM <input type="checkbox"/> PM <input type="checkbox"/> AM & PM
Observed By: S. Duffin	<input type="checkbox"/> AM <input type="checkbox"/> PM <input checked="" type="checkbox"/> AM & PM
Observed By: V. Mansour	<input type="checkbox"/> AM <input type="checkbox"/> PM <input checked="" type="checkbox"/> AM & PM
Observed By: P. Westbrook	<input type="checkbox"/> AM <input type="checkbox"/> PM <input checked="" type="checkbox"/> AM & PM
Observed By: S. Kumra	<input type="checkbox"/> AM <input checked="" type="checkbox"/> PM <input type="checkbox"/> AM & PM

Details	
Weather Conditions:	AM: <input checked="" type="checkbox"/> Dry <input type="checkbox"/> Sunny <input type="checkbox"/> Rain <input type="checkbox"/> Snow <input type="checkbox"/> Other: 1 C
	PM: <input checked="" type="checkbox"/> Dry <input checked="" type="checkbox"/> Sunny <input type="checkbox"/> Rain <input type="checkbox"/> Snow <input type="checkbox"/> Other: 4 C
Type of Crossing:	<input type="checkbox"/> 4 Way Intersection <input checked="" type="checkbox"/> 3 Way Intersection <input type="checkbox"/> Midblock (i.e., not an intersection)
Type of Control:	<input type="checkbox"/> Traffic Lights <input checked="" type="checkbox"/> Stop Signs (Traffic is stopped on one street only) <input type="checkbox"/> Yield Signs <input type="checkbox"/> No Control <input type="checkbox"/> All Way Stop (Traffic is stopped in all directions)

Site Conditions	
School Signs:	<input type="checkbox"/> School Area Signs <input type="checkbox"/> School Crossing Signs <input type="checkbox"/> Parking/Stopping Prohibition
Posted Speed Limit:	<input type="checkbox"/> 40 km/hr <input checked="" type="checkbox"/> 50 km/h <input type="checkbox"/> 60 km/hr <input type="checkbox"/> Other:
Visibility of Crossing Pedestrians:	<input type="checkbox"/> Poor <input type="checkbox"/> Fair <input checked="" type="checkbox"/> Good Comments:
Sight Obstructions:	<input type="checkbox"/> Hedges <input type="checkbox"/> Trees <input type="checkbox"/> Fences <input type="checkbox"/> Bus Shelter <input type="checkbox"/> Newspaper Boxes <input type="checkbox"/> Other (Specify):
Road Grade:	<input checked="" type="checkbox"/> Flat <input type="checkbox"/> Incline <input type="checkbox"/> Decline
Road Geometrics:	<input checked="" type="checkbox"/> Straight <input type="checkbox"/> Curved Comments:
Road Width:	32 feet/metres Curb to Curb: feet/metres Curb to Median: feet/metres
Road Conditions:	AM: <input checked="" type="checkbox"/> Dry <input type="checkbox"/> Wet <input type="checkbox"/> Snow Covered <input type="checkbox"/> Ice PM: <input checked="" type="checkbox"/> Dry <input type="checkbox"/> Wet <input type="checkbox"/> Snow Covered <input type="checkbox"/> Ice
Sidewalks:	<input type="checkbox"/> Not Present <input checked="" type="checkbox"/> North <input checked="" type="checkbox"/> South <input checked="" type="checkbox"/> East <input checked="" type="checkbox"/> West
Proximity to School:	<input type="checkbox"/> In Front of <input checked="" type="checkbox"/> Within 100 feet/metres
Route Survey:	<input type="checkbox"/> Shopping Area <input type="checkbox"/> Construction <input type="checkbox"/> Driveway <input type="checkbox"/> Parked Vehicle(s) <input type="checkbox"/> Transit Bus Stop <input type="checkbox"/> Underpass Within feet/metres Other (specify):
Comments / Conflicts:	

5.79

Crossing Guard Warrant Survey

Location: Kelly Rd. & Brookhurst Rd.

Safe Gap Time Safe Gap Time Calculation (if applicable): $\left(\frac{W}{3.5} + 4\right)$ 13 = sec.
 Signalized Intersection turning traffic count

Morning Intervals

Time (AM)	# of Pods	# of Peds	Gaps	# of Gaps
7:45 - 7:50				
7:50 - 7:55				
7:55 - 8:00				
8:00 - 8:05				
8:05 - 8:10				
8:10 - 8:15			32,16,34,15,1,59,25,79	15
8:15 - 8:20			48,29,1,20,55,25,60,30,1	17
8:20 - 8:25	II,IP		27,30,44,1,35,29,61,21,1,22	17
8:25 - 8:30	III,II,16,	III,IP	24,22,61,23,27,1,27,44,1,56	18
8:30 - 8:35	III,II,IP,	II,IP	25,1,26,40,IIIIII,40,1,38,34,IIII	13
8:35 - 8:40	I,II,II,I		27,II,39,IIII,76,1,31,24,III,15,1,19,III	15
8:40 - 8:45				
8:45 - 8:50				
8:50 - 8:55				
8:55 - 9:00				

Afternoon Intervals

Time (PM)	# of Pods	# of Peds	Gaps	# of Gaps
2:45 - 2:50				
2:50 - 2:55				
2:55 - 3:00				
3:00 - 3:05	II,II		50,75,1,20,37,14,35,1	22
3:05 - 3:10	II,IP,IP,	II,IP,II	24,35,IIIIIIII,35,13,44,1,66	14
3:10 - 3:15	18,III		80,II,15,45,1,101,36	19
3:15 - 3:20			98,15,36,26,38	14
3:20 - 3:25			44,19,1,26,1,23,95,III,90	20
3:25 - 3:30			138,44,1,74	10
3:30 - 3:35				
3:35 - 3:40				
3:40 - 3:45				
3:45 - 3:50				
3:50 - 3:55				
3:55 - 4:00				

Recommendations

1) THAT THE WARRANTS HAVE NOT BEEN MET FOR PLACEMENT OF A SCHOOL CROSSING GUARD.

Observations

Volume of Traffic (see Intersection Plan):
 AM: Heavy Light Intermittant PM: Heavy Light Intermittant

Number of Crossing Pedestrians:
 AM: North 22 East 19 South West PM: North 26 East 6 South West

Turning Traffic:
 AM: Heavy Light Intermittant PM: Heavy Light Intermittant

Additional Comments/Conflicts

ALL TRAFFIC IS WELL BEHAVED.

STOPPING COMPLIANCE IS GOOD IN THE PRESENCE OF PEDESTRIANS.

THE TRAFFIC IS COURTEOUS TO CROSSING PEDESTRIANS.

YOUNGER STUDENTS WERE ACCOMPANIED BY PARENTS.

DAY CARE GROUP CROSSED WITH TWO ADULTS - 16 IN THE AM AND 18 IN THE PM.

Additional Recommendations

Site Inspection Report



Traffic Safety Council
NOV 30 2016

Corporate Services
 Office of the City Clerk

Site	
School: McKinnon Public School	Address: 3270 Tacc Drive Mississauga, On L5M 0H3
School Times: 8:30 AM - 3:00 PM	Student Population: 738
No. of School Buses: 154	Bussed
School: []	Address: []
School Times: [] AM - [] PM	Student Population: []
No. of School Buses: []	

Location: (Please identify the location with reference to nearest intersection. Indicate nearest school and address)
 Tacc Drive & Tenth Line West

Date of Inspection: 2016 11 11 Inspection Time: 8:00 AM - 3:00 PM Requested By: S I - October 24, 2016

Prepared By: A. Liya Request For: Placement of a Crossing Guard

Observers

File Number: RT.10 Ward: Ward 10

Observed By: T. Coulson	<input type="checkbox"/> AM	<input type="checkbox"/> PM	<input checked="" type="checkbox"/> AM & PM
Observed By: D. Suess	<input type="checkbox"/> AM	<input type="checkbox"/> PM	<input checked="" type="checkbox"/> AM & PM
Observed By: S. Beniuk	<input type="checkbox"/> AM	<input type="checkbox"/> PM	<input checked="" type="checkbox"/> AM & PM
Observed By: A. Liya	<input type="checkbox"/> AM	<input type="checkbox"/> PM	<input checked="" type="checkbox"/> AM & PM
Observed By: S. Duffin	<input type="checkbox"/> AM	<input type="checkbox"/> PM	<input checked="" type="checkbox"/> AM & PM
Observed By: []	<input type="checkbox"/> AM	<input type="checkbox"/> PM	<input type="checkbox"/> AM & PM

Details

Weather Conditions: AM: Dry Sunny Rain Snow Other: 7 C
 PM: Dry Sunny Rain Snow Other: 6 C

Type of Crossing: 4 Way Intersection 3 Way Intersection Midblock (i.e., not an intersection)

Type of Control: Traffic Lights Yield Signs No Control
 Stop Signs (Traffic is stopped on one street only) All Way Stop (Traffic is stopped in all directions)

Site Conditions

School Signs: School Area Signs School Crossing Signs Parking/Stopping Prohibition

Posted Speed Limit: 40 km/hr 50 km/h 60 km/hr Other: []

Visibility of Crossing Pedestrians: Poor Fair Good **ON TENTH LINE** Comments: []

Sight Obstructions: Hedges Trees Fences Bus Shelter
 Newspaper Boxes Other (Specify): []

Road Grade: Flat Incline Decline

Road Geometrics: Straight Curved Comments: []

Road Width: N/A feet/metres Curb to Curb: [] feet/metres Curb to Median: [] feet/metres

Road Conditions: AM: Dry Wet Snow Covered Ice
 PM: Dry Wet Snow Covered Ice

Sidewalks: Not Present North South East West

Proximity to School: In Front of Within 170 feet/metres

Route Survey: Shopping Area Construction Driveway Parked Vehicle(s)
 Transit Bus Stop Underpass Within [] feet/metres Other (specify): []

Comments / Conflicts: []

5.8a

Crossing Guard Warrant Survey

Location:

Safe Gap Time Safe Gap Time Calculation (if applicable): $\left(\frac{W}{3.5} + 4\right)$ = sec.
 Signalized Intersection turning traffic count

Morning Intervals

Time (AM)	# of Peds	# of Conflicts	Gaps	# of Gaps
7:45 - 7:50				
7:50 - 7:55				
7:55 - 8:00				
8:00 - 8:05			0, I, III	
8:05 - 8:10	I		0, III, I, III	
8:10 - 8:15	III		I, III, III	
8:15 - 8:20	III, II		0, III	
8:20 - 8:25	III, III		III, II, II	
8:25 - 8:30			III, I, III	
8:30 - 8:35				
8:35 - 8:40				
8:40 - 8:45				
8:45 - 8:50				
8:50 - 8:55				
8:55 - 9:00				

Afternoon Intervals

Time (PM)	# of Peds	# of Conflicts	Gaps	# of Gaps
2:45 - 2:50				
2:50 - 2:55				
2:55 - 3:00	III, P			
3:00 - 3:05	II		0, I, II	
3:05 - 3:10	II, II		III, I	
3:10 - 3:15	II		0, III, II	
3:15 - 3:20			I, II, III, III	
3:20 - 3:25			0, III, I	
3:25 - 3:30			0, II, 0	
3:30 - 3:35				
3:35 - 3:40				
3:40 - 3:45				
3:45 - 3:50				
3:50 - 3:55				
3:55 - 4:00				

Recommendations

- 1) THAT TRAFFIC SAFETY COUNCIL RE-INSPECT IN THE SPRING ONCE THE "NO STOPPING" SIGNAGE RECOMMENDED ON THE TRAFFIC SAFETY COUNCIL SITE INSPECTION REPORT DATED OCTOBER 24, 2016 IS IN PLACE.
- 2) THAT THE PRINCIPAL OF MCKINNON PUBLIC SCHOOL BE REQUESTED TO REMIND PARENTS AND STUDENTS OF THE REQUIREMENT OF WEARING A HELMET WHILE RIDING A BIKE.

Observations

Volume of Traffic (see Intersection Plan):
 AM: Heavy Light Intermittant PM: Heavy Light Intermittant

Number of Crossing Pedestrians:
 AM: North East South West PM: North East South West

Turning Traffic:
 AM: Heavy Light Intermittant PM: Heavy Light Intermittant

Additional Comments/Conflicts

PEDESTRIANS CROSS CONFIDENTLY, OBEYING THE TRAFFIC SIGNALS AND ACTIVATING THE PED BUTTON.

ZEBRA STRIPES AND COUNTDOWN TIMERS ARE IN PLACE.

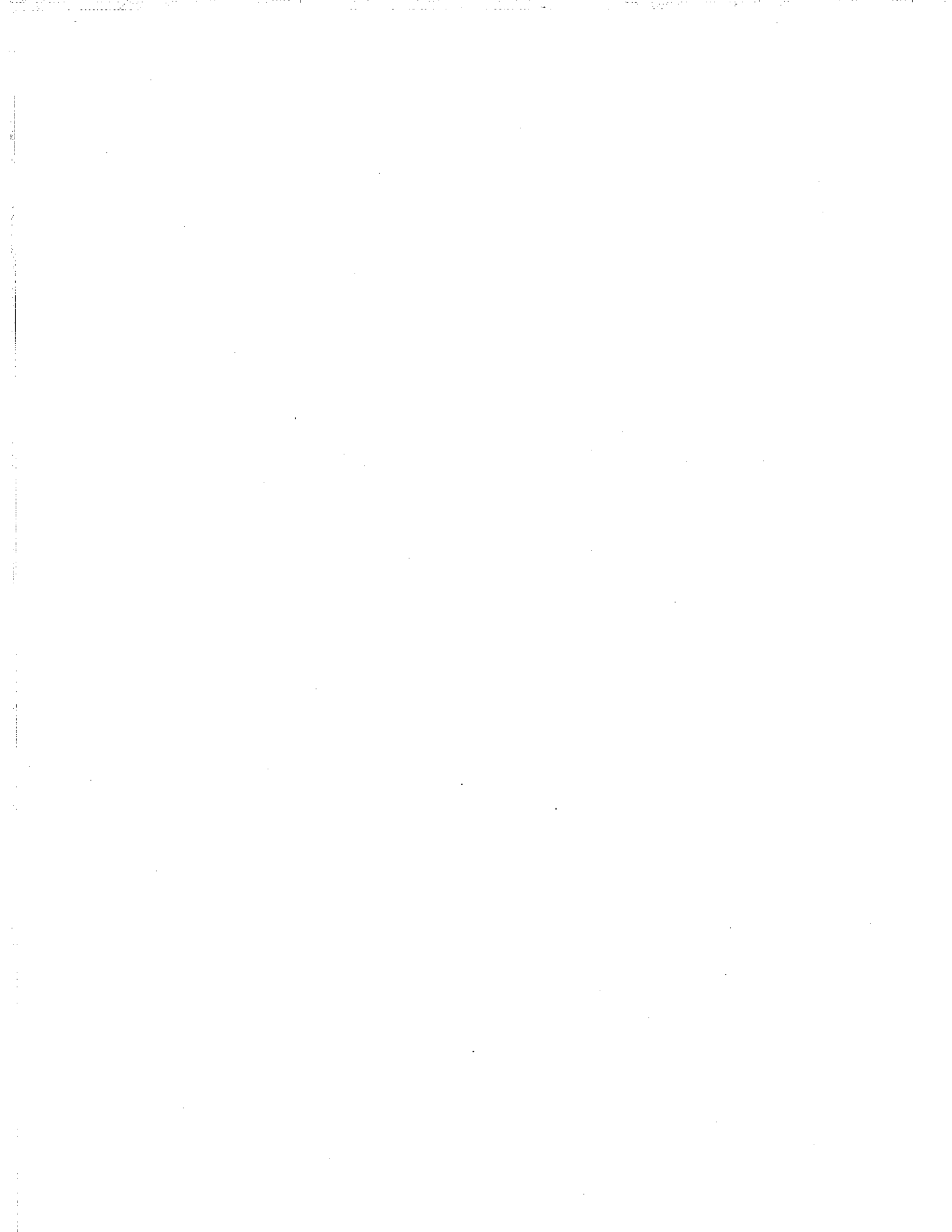
PEDESTRIANS HAVE SUFFICIENT TIME TO CROSS THE INTERSECTION.

DRIVERS ARE COURTEOUS TO CROSSING PEDESTRIANS.

OF THE 7 OR 8 CYCLISTS IN THE AM NONE WORE HELMETS OR HAD HELMETS WITH THEM. THE SAME WAS OBSERVED IN THE PM.

Additional Recommendations

Empty text area for additional recommendations.



5.9

Site Inspection Report



Traffic Safety Council
NOV 30 2016

Corporate Services
Office of the City Clerk

Site			
School:	Owenwood Public School	Address:	930 Owenwood Drive Mississauga, On L5H 3J2
School Times:	8:50 AM	3:20 PM	
Student Population:	104	No. of School Buses:	54 Bussed
School:		Address:	
School Times:		AM	PM
Student Population:			
No. of School Buses:			

Location: (Please identify the location with reference to nearest intersection. Indicate nearest school and address)
 Lakeshore Road and Silver Birch Trail

Date of Inspection: 2016 11 17 Inspection Time: 8:20 AM 3:20 PM Requested By: Supervisor-Crossing Guards

Prepared By: D. Yaunan Request For: Retention of School Crossing Guard

Observers		
File Number:	RT.10	Ward: Ward 2
Observed By:	D. Yaunan	<input type="checkbox"/> AM <input type="checkbox"/> PM <input checked="" type="checkbox"/> AM & PM
Observed By:	P. Westbrook	<input type="checkbox"/> AM <input type="checkbox"/> PM <input checked="" type="checkbox"/> AM & PM
Observed By:	S. Kurnra	<input type="checkbox"/> AM <input checked="" type="checkbox"/> PM <input type="checkbox"/> AM & PM
Observed By:	S. Duffin	<input type="checkbox"/> AM <input type="checkbox"/> PM <input checked="" type="checkbox"/> AM & PM
Observed By:		<input type="checkbox"/> AM <input type="checkbox"/> PM <input type="checkbox"/> AM & PM
Observed By:		<input type="checkbox"/> AM <input type="checkbox"/> PM <input type="checkbox"/> AM & PM

Details	
Weather Conditions:	AM: <input checked="" type="checkbox"/> Dry <input checked="" type="checkbox"/> Sunny <input type="checkbox"/> Rain <input type="checkbox"/> Snow <input type="checkbox"/> Other: 3 C
	PM: <input checked="" type="checkbox"/> Dry <input checked="" type="checkbox"/> Sunny <input type="checkbox"/> Rain <input type="checkbox"/> Snow <input type="checkbox"/> Other: 12 C
Type of Crossing:	<input checked="" type="checkbox"/> 4 Way Intersection <input type="checkbox"/> 3 Way Intersection <input type="checkbox"/> Midblock (i.e., not an intersection)
Type of Control:	<input checked="" type="checkbox"/> Traffic Lights <input type="checkbox"/> Yield Signs <input type="checkbox"/> No Control
	<input type="checkbox"/> Stop Signs (Traffic is stopped on one street only) <input type="checkbox"/> All Way Stop (Traffic is stopped in all directions)

Site Conditions	
School Signs:	<input type="checkbox"/> School Area Signs <input type="checkbox"/> School Crossing Signs <input checked="" type="checkbox"/> Parking/Stopping Prohibition
Posted Speed Limit:	<input type="checkbox"/> 40 km/hr <input type="checkbox"/> 50 km/h <input checked="" type="checkbox"/> 60 km/hr <input type="checkbox"/> Other: _____
Visibility of Crossing Pedestrians:	<input type="checkbox"/> Poor <input type="checkbox"/> Fair <input checked="" type="checkbox"/> Good Comments: _____
Sight Obstructions:	<input type="checkbox"/> Hedges <input type="checkbox"/> Trees <input type="checkbox"/> Fences <input type="checkbox"/> Bus Shelter
	<input type="checkbox"/> Newspaper Boxes <input type="checkbox"/> Other (Specify): _____
Road Grade:	<input type="checkbox"/> Flat <input checked="" type="checkbox"/> Incline _____ <input type="checkbox"/> Decline _____
Road Geometrics:	<input checked="" type="checkbox"/> Straight _____ <input type="checkbox"/> Curved _____ Comments: _____
Road Width:	N/A feet/metres Curb to Curb: _____ feet/metres Curb to Median: _____ feet/metres
Road Conditions:	AM: <input checked="" type="checkbox"/> Dry <input type="checkbox"/> Wet <input type="checkbox"/> Snow Covered <input type="checkbox"/> Ice
	PM: <input checked="" type="checkbox"/> Dry <input type="checkbox"/> Wet <input type="checkbox"/> Snow Covered <input type="checkbox"/> Ice
Sidewalks:	<input type="checkbox"/> Not Present <input checked="" type="checkbox"/> North <input checked="" type="checkbox"/> South <input checked="" type="checkbox"/> East <input checked="" type="checkbox"/> West
Proximity to School:	<input type="checkbox"/> In Front of <input checked="" type="checkbox"/> Within 650 feet/metres
Route Survey:	<input type="checkbox"/> Shopping Area <input type="checkbox"/> Construction <input type="checkbox"/> Driveway <input type="checkbox"/> Parked Vehicle(s)
	<input type="checkbox"/> Transit Bus Stop <input type="checkbox"/> Underpass Within _____ feet/metres Other (specify): _____
Comments / Conflicts:	

599

Crossing Guard Warrant Survey

Location: Lakeshore Road and Silver Birch Trail

Safe Gap Time Safe Gap Time Calculation (if applicable): $\left(\frac{W}{3.5} + 4 \right)$ = sec.
 Signalized Intersection turning traffic count

Morning Intervals

Time (AM)	# of Peds	# of Conflicts	Gaps	# of Gaps
7:45 - 7:50				
7:50 - 7:55				
7:55 - 8:00				
8:00 - 8:05				
8:05 - 8:10				
8:10 - 8:15				
8:15 - 8:20				
8:20 - 8:25			/ /	
8:25 - 8:30			/ / / /	
8:30 - 8:35	/		/ / / / / /	
8:35 - 8:40	/ P		/ /	
8:40 - 8:45	/ P		/ / / / /	
8:45 - 8:50			/ /	
8:50 - 8:55				
8:55 - 9:00				

Afternoon Intervals

Time (PM)	# of Peds	# of Conflicts	Gaps	# of Gaps
2:45 - 2:50				
2:50 - 2:55				
2:55 - 3:00				
3:00 - 3:05				
3:05 - 3:10				
3:10 - 3:15				
3:15 - 3:20				
3:20 - 3:25			/, 0	
3:25 - 3:30			/ / / / /	
3:30 - 3:35			0, /	
3:35 - 3:40	/ P		/, 0	
3:40 - 3:45			/, /	
3:45 - 3:50			/, 0	
3:50 - 3:55				
3:55 - 4:00				

Recommendations

SEE ATTACHED

Observations

Volume of Traffic (see Intersection Plan):
 AM: Heavy Light Intermittant PM: Heavy Light Intermittant

Number of Crossing Pedestrians:
 AM: North East 3 South West PM: North East 1 South West

Turning Traffic:
 AM: Heavy Light Intermittant PM: Heavy Light Intermittant

Additional Comments/Conflicts

THE SCHOOL SECRETARY CONFIRMED THAT ALL STUDENTS LIVING NORTH OF LAKESHORE ROAD ARE OFFERED COURTESY BUSSING.

THE INTERSECTION IS WELL MARKED.

TRAFFIC IS COURTEOUS TO CROSSING PEDESTRIANS.

Additional Recommendations

- 1) THAT THE WARRANTS ARE NOT MET FOR THE RETENTION OF A SCHOOL CROSSING GUARD.
- 2) THAT THE CROSSING BE CLOSED AT THE MARCH BREAK.
- 3) THAT THE PRINCIPAL BE REQUESTED TO NOTIFY THE PARENTS AND STUDENTS THAT THE CROSSING WILL BE CLOSED AT THE MARCH BREAK.

Angie Melo

Trans Safety Council
NOV 30 2016

From: Angie Melo
Sent: 2016/11/24 4:36 PM
To: Angie Melo
Subject: FW: foot and vehicle traffic around Clarkson Secondary School

From: Sheelagh Duffin
Sent: 2016/11/14 3:42 PM
To: Gaggan Gill
Cc: Angie Melo; Kelly Walter; Jennifer Waye; Karen Ras; David Marcotte (david.marcotte@peelsb.com); Peter Westbrook
Subject: RE: foot and vehicle traffic around Clarkson Secondary School

Hello,

By copy of this email to Kelly Walter I am requesting that she schedule a safety review on Bromsgrove Road in front of Clarkson Secondary School. The times of the inspection would be 7:30 – 8:00 am and 2:29 – 3:00 pm. The safety review would be to review the feasibility of installing an IPS and to determine if there are other safety measures that might be implemented for the students of Clarkson Secondary School.

Dave – Would you kindly advise your availability to attend to review the Kiss and Ride so that we can schedule the safety review for the same time.

Thank you.

Sheelagh
5167



Sheelagh Duffin
Supervisor, Crossing Guards
T 905-896-5167 | F 905-896-5166
sheelagh.duffin@mississauga.ca

City of Mississauga | Transportation and Works Department,
Works Operations and Maintenance Division
3185 Mavis Road
Mississauga ON L5C 1T7

Please consider the environment before printing.

From: Angie Melo
Sent: 2016/10/26 4:40 PM
To: Sheelagh Duffin
Subject: FW: foot and vehicle traffic around Clarkson Secondary School

Please review for consideration of a Site Inspection

Thank you



Angie Melo
Legislative Coordinator
T 905-615-3200 ext.5423
angie.melo@mississauga.ca

5.10a

City of Mississauga | Corporate Services Department,
Legislative Services Division

Please consider the environment before printing.

From: Gaggan Gill
Sent: 2016/10/26 4:36 PM
To: Angie Melo
Cc: Jennifer Waye; Karen Ras; Gaggan Gill
Subject: foot and vehicle traffic around Clarkson Secondary School

Good afternoon Angie:

Could you please look into the following inquiry from Councillor Ras.

A resident [REDACTED] has concerns about foot and vehicle traffic around Clarkson Secondary School.

Is there an opportunity to have this area reviewed by traffic safety council?

Apparently, parents are not very good at dropping kids off directly at the school rather drop them off along Bromsgrove with kids darting in/out of traffic.

Can the school get a better Kiss 'n Ride? Can there be a better marked crossing around the same area where there is a MiWay stop near the highschool? Similar to the green light just for pedestrians near the GO on Bromsgrove.

Thanks for your help.

Best,

Gaggan
Gaggan Gill
Special Assistant to
Councillor Karen Ras, Ward 2
905-896-5200 b.

Fall Community Office Hours: Friday, November 4th, 1:00 – 2:30 pm, Clarkson Community Centre, Multipurpose Room. Please email karen.ras@mississauga.ca or call 905-896-5200 to make an appointment for a one-on-one discussion.



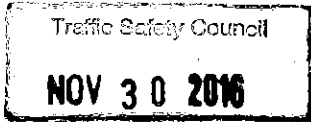
Please consider the environment before printing this e-mail.

"This e-mail may not be forwarded to anyone for any reason without express written permission of the author."

Angie Melo

5.11

From: Angie Melo
Sent: 2016/11/24 4:25 PM
To: Angie Melo
Subject: FW: Settlers Green Public School



From: Sheelagh Duffin
Sent: 2016/11/09 2:32 PM
To: Kelly Walter
Cc: Angie Melo;
Subject: RE: Settlers Green Public School

Hi Kelly,

Would you kindly schedule a Mississauga Traffic Safety Council site inspection and gap study in early December at Windwood Drive and the park path for the students of Settler's Green Public School as per the email below. The times of the inspection would be 8:20 – 8:50 and 3:10 – 3:40.

For information, student cyclists have been observed exiting the path and crossing Windwood Drive on their bicycles without stopping to check for on-coming traffic.

Kindly advise Ms. Baron by email of the date of the inspection once scheduled.

Thank you.

Sheelagh



Sheelagh Duffin
Supervisor, Crossing Guards
T 905-896-5167 | F 905-896-5166
sheelagh_duffin@mississauga.ca

City of Mississauga | Transportation and Works Department,
Works Operations and Maintenance Division
3185 Mavis Road
Mississauga ON L5C 1T7

Please consider the environment before printing.

From: Angie Melo
Sent: 2016/11/07 4:03 PM
To: Sheelagh Duffin
Subject: Settlers Green Public School

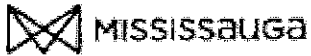
I received a telephone call from Ms. Christine Baron [REDACTED] who advised that she has spoken to a number of people (does not have any names or numbers of those she has spoken to in the past about this issue).

Ms. Baron would is very concerned for the safety of the students from Settlers Green Public School who use the pathway through Montivideo Drive and out to Windwood Drive. Ms. Baron advised that the signage is either too far or not visible because it's lost in the large tree, as well as there are no line markings on the road.

5.11.9

She would like to have Traffic Safety conduct a site inspection at this location. Ms. Baron would like to be contacted to advise of when the site inspection will be conducted.

Thank you
Angie



Angie Melo
Legislative Coordinator
T 905-615-3200 ext.5423
angie.melo@mississauga.ca

City of Mississauga | Corporate Services Department,
Legislative Services Division

Please consider the environment before printing.

Angie Melo

From: Angie Melo
Sent: 2016/11/24 4:13 PM
To: Angie Melo
Subject: FW: Site Inspection



-----Original Message-----

From: Sheelagh Duffin
Sent: 2016/11/09 3:27 PM
To: davidbrennan
Cc: Angie Melo; dale.lucas@dpcdsb.org; Kelly Walter; Peter Westbrook ([REDACTED])
Subject: RE: Site Inspection

Hello David,

Hope all is well with you. It has been awhile since we were together in front of St. Hilary Catholic School the last time.

By copy of this email to Kelly Walter I am requesting that she schedule a Mississauga Traffic Safety Council site inspection early December in front of St. Hilary Catholic School. The times of the inspection would be 8:30 - 9:00 and 3:30 - 4:00. Kelly will notify the principal and the councillor of the date and times once the inspection is scheduled.

Dale - would you kindly advise your availability in early December so that we can schedule a joint Traffic Safety site inspection/ Dufferin Peel Catholic District School Board Kiss and Ride inspection.

Thank you.

Sheelagh
5167

Sheelagh Duffin
Supervisor, Crossing Guards
T 905-896-5167 | F 905-896-5166
sheelagh.duffin@mississauga.ca

City of Mississauga | Transportation and Works Department, Works Operations and Maintenance Division
3185 Mavis Road
Mississauga ON L5C 1T7

Please consider the environment before printing.

-----Original Message-----

From: Angie Melo
Sent: 2016/11/09 10:21 AM
To: Sheelagh Duffin
Subject: FW: Site Inspection

Hi Sheelagh,

5.129 I have received this request, and I am referring it to you for consideration of scheduling a site inspection. I will advise David that I will forward the request for a site inspection of the kiss and ride area on school property, to Dale Lucas of the school board.

Angie Melo
Legislative Coordinator
T 905-615-3200 ext.5423
angie.melo@mississauga.ca

City of Mississauga | Corporate Services Department, Legislative Services Division

Please consider the environment before printing.

-----Original Message-----

From: David Brennan [REDACTED]
Sent: 2016/11/09 8:33 AM
To: Angie Melo; Carolyn Parrish; Maria.Bevacqua@dpcdsb.org; David Brennan
Subject: Site Inspection

Good morning Angie,

I'm not sure if you remember me, but I spent a brief time on the traffic safety council a few years back. I have cc'd Ward 5 Councillor Carolyn Parrish as well as the school principal of St. Hilary, Maria Bevacqua.

I'm just writing in regards to St. Hilary Catholic Elementary School. Two recent school council meetings have outlined a serious need for a site inspection of the Kiss n Ride/drop-off area in front of the school, as well as the need for by-law officers to enforce the existing laws around the school.

In a few short weeks, we have had at least four accidents; cars parking in the bus zone, cars parking and leaving their vehicle in the Kiss n Ride area, people who are using a relatives accessibility permit to park in handicap parking, etc. Some mornings, out of frustration motorists are speeding through the lot, and others can be seen entering through the exit of the school. It is only a matter of time before a student, parent, or both get injured.

In terms of the crossing guards at Ceremonial/Fairwind, they are doing a fantastic job.

If you have any questions, please do not hesitate to contact the school principal at [REDACTED]

Thank you so much!

David Brennan

Sent from my iPhone

5.13



From: Angie Melo
Sent: 2016/11/24 4:17 PM
To: Angie Melo
Subject: FW: Loyola CSS Traffic Issues

From: Sheelagh Duffin
Sent: 2016/11/11 4:26 PM
To: Meredith Karosas
Cc: Angie Melo; Kelly Walter; rita_reid; dale.lucas@dpcdsb.org
Subject: RE: Loyola CSS Traffic Issues

Hello Meredith,

By copy of this email to Kelly Walter I am requesting that she schedule a Mississauga Traffic Safety Council safety review for the students of Loyola Secondary School on Burnhamthorpe Road in front of the school and on Ridgeway Drive on the east side of the school to determine if there are measures that can be implemented to improve safety for the students. The times of the safety review would be 7:42 – 8:12 am and 2:15 – 2:45 pm.

The councillor's office, the chair of the parent council, the school principal and all other interested parties will be notified of the date of the safety review once it is scheduled should anyone wish to attend.

Thank you.

Sheelagh



Sheelagh Duffin
 Supervisor, Crossing Guards
 T 905-896-5167 | F 905-896-5166
sheelagh.duffin@mississauga.ca

City of Mississauga | Transportation and Works Department,
 Works Operations and Maintenance Division
 3185 Mavis Road
 Mississauga ON L5C 1T7

Please consider the environment before printing.

From: Angie Melo
Sent: 2016/11/10 3:27 PM
To: Sheelagh Duffin
Subject: FW: Loyola CSS Traffic Issues

Request for Site Inspection



Angie Melo
 Legislative Coordinator
 T 905-615-3200 ext.5423

5.139

angie.melo@mississauga.ca

City of Mississauga | Corporate Services Department,
Legislative Services Division

Please consider the environment before printing.

From: Meredith Karosas **On Behalf Of** Matt Mahoney
Sent: 2016/11/10 3:26 PM
To: Angie Melo
Cc: Debbie Thomson; Meredith Karosas; Matt Mahoney
Subject: FW: Loyola CSS Traffic Issues

Good afternoon Angie

Councillor Mahoney has request that the following email from Loyola CSS Parent Council be forward to the Traffic Safety Council for review.

Please let us know next steps?

Thank you.

Meredith

Meredith E Karosas
Executive Assistant
Councillor Matt Mahoney, Ward 8
T 905-896-5800 } Meredith.Karosas@Mississauga.ca



300 City Centre Drive | Mississauga ON | L5B 3C1

[Join our mailing list](#)



Please consider the environment before printing this e-mail.

"This e-mail may not be forwarded to anyone for any reason without express written permission of the author."

From: Rita Reid
Sent: 2016/11/10 11:58 AM
To: Matt Mahoney
Subject: Loyola CSS Traffic Issues

Matt,

I am school council co-chair this year at Loyola CSS. In our last council meeting we discussed traffic problems the school faces and we would like to bring these to your attention in hopes that we can find solutions before somebody gets hurt. The problem times are before and after school. There are cars parking on the Burnhamthorpe shoulder to drop off and pick up students. Some cars even come to a dead stop on Ridgeway to let out students in the morning. Drivers on their way to work are going too fast. I am sure there are other issues that put the safety of our students and teachers in jeopardy. Can

5.13b

you please pass this along to the Traffic Safety Council to review.

We also talked about you coming out to one of our meetings. I believe Cheryl Diab was going to speak to you about this.

Thanks,
Rita Reid.
Co-chair Loyola CSS



5.14

From: Angie Melo
Sent: 2016/11/24 4:19 PM
To: Angie Melo
Subject: FW: SR 3518401 - Request for cross walk markings - ref. W9 21427196

From: Sheelagh Duffin
Sent: 2016/11/16 2:41 PM
To: Kelly Walter
Cc: Colin Patterson; Angie Melo; Nancy Salichuk
Subject: RE: SR 3518401 - Request for cross walk markings - ref. W9 21427196

Hello Kelly,

As per Colin's email, would you kindly schedule a site inspection at St. Teresa of Avila Catholic Elementary School 6675 Montevideo Road. The site inspection would include a gap study to determine if there are students crossing Montevideo in front of the school and also a safety review of the pedestrian tunnel under Montevideo at the south end of the school. The times of the inspection would be 8:00 – 8:30 am and 3:00 – 3:30.

From: Colin Patterson
Sent: 2016/11/16 10:40 AM
To: Sheelagh Duffin
Subject: RE: SR 3518401 - Request for cross walk markings - ref. W9 21427196

Sheelagh,

Yes please pass along to Traffic Safety to schedule a site inspection.

Thanks,

Colin

From: Sheelagh Duffin
Sent: 2016/11/16 10:34 AM
To: Colin Patterson
Subject: RE: SR 3518401 - Request for cross walk markings - ref. W9 21427196

Hi Colin,

We have not been at St. Teresa of Avila for a number of years. There is a pedestrian tunnel under Montevideo Road directly at the school, south side. The last time we were there we inspected the tunnel to make sure it was in good repair; no garbage, lights functioning, etc.

We can do a site inspection but I would wonder why, if they are concerned with crossing Montevideo, they would not use the pedestrian tunnel.

Let me know if you want a site inspection. It would be probably the second week of December before Traffic Safety would have an opening to schedule it in.

Thanks!!

5.149

Sheelagh
5167



Sheelagh Duffin
Supervisor, Crossing Guards
T 905-896-5167 | F 905-896-5166
sheelagh.duffin@mississauga.ca

City of Mississauga | Transportation and Works Department,
Works Operations and Maintenance Division
3185 Mavis Road
Mississauga ON L5C 1T7

Please consider the environment before printing.

From: Colin Patterson
Sent: 2016/11/16 10:25 AM
To: Sheelagh Duffin
Subject: FW: SR 3518401 - Request for cross walk markings - ref. W9 21427196

Hi Sheelagh,

Is this an area that has been reviewed by Traffic Safety recently? I'm thinking this concern may be best addressed through Traffic Safety.

Let me know what you think.

Thanks,

Colin

From: Lisa Young Lai
Sent: 2016/11/11 3:12 PM
To: Pat Saito
Cc: Colin Patterson; Nancy Salichuk
Subject: SR 3518401 - Request for cross walk markings - ref. W9 21427196

Good Afternoon Councillor Saito,

This is to confirm that your request was received and has been assigned to the Road Safety section for review and comments.


An update will be provided.



Lisa Young Lai
Administrative Assistant, Traffic Management
T 905-615-3200 ext.4796 | F 905-896-5166
Lisa_younglai@mississauga.ca

City of Mississauga | Transportation and Works Department,
Works Operations and Maintenance Division

"This e-mail may not be forwarded to anyone for any reason without express written permission of the author."

 Please consider the environment before printing this e-mail.

From: Pat Saito
Sent: 2016/11/10 11:19 AM
To: Nancy Salichuk
Cc: Mickey Frost
Subject: Action: Request for cross walk makings - ref. W9 21427196

Hello,
Please have staff investigate, take appropriate action and provide Councillor Saito with a follow-up response. Your assistance is appreciated.

Ref. W9 21427196

Resident would like to know if it's possible to have a cross walk (markings) installed in front of St. Teresa of Avila School (6675 Montevideo Rd). Resident informs there is a designated crossing guard at Aquitaine & Montevideo, however, the location is a little far from the school. Feels it would make the area safer for students if a cross walk was installed in front of the school.

Thank you kindly,
Michelle Stefancic, ext. 5900
Administrative Assistant
Ward 9 Councillor Pat Saito

"This e-mail may not be forwarded to anyone for any reason without express written permission of the author."

7-1



School Offence Month Report - 2016/2017

October 2016

<i>School Name</i>	<i>Offence Code</i>	<i>Issued Tickets</i>	<i>Total Visits</i>
ALLAN A. MARTIN (PS)	15	1	1
	99	0	7
ARTESIAN DR (PS)	43	1	1
	99	0	1
ASCENSION OF OUR LORD (CS)	99	0	2
BARONDALE (PS)	27	1	1
	43	1	1
	99	0	1
BISHOP SCALABRINI (CS)	99	0	1
BLESSED-TERESA OF CALCUTTA (CS)	2	6	2
	99	0	1
BRIAN W. FLEMING (PS)	99	0	3
BRIARWOOD (PS)	27	3	3
	99	0	1
BRITANNIA (PS)	3	1	1
	42	1	1
	43	2	1
	99	0	1
BROOKMEDE (PS)			

7.1a

October 2016

<i>School Name</i>	<i>Offence Code</i>	<i>Issued Tickets</i>	<i>Total Visits</i>
	24	1	1
	99	0	4
BURNHAMTHORPE (PS)			
	15	1	1
	27	4	2
	42	2	2
	43	1	1
	99	0	1
CAMILLA ROAD (PS)			
	99	0	2
CANADIAN MARTYRS (CS)			
	42	1	1
	43	2	2
	99	0	2
CASHMERE AVENUE (PS)			
	2	1	1
	43	1	1
CASTLEBRIDGE (PS)			
	99	0	2
CHAMPLAIN TRAIL (PS)			
	99	0	1
CHRIS HADFIELD (PS)			
	43	1	1
	99	0	1
CHURCHILL MEADOWS (PS)			
	12	1	1
	15	3	2
	24	1	1
	27	1	1

October 2016

<i>School Name</i>	<i>Offence Code</i>	<i>Issued Tickets</i>	<i>Total Visits</i>
	31	1	1
	42	2	1
	43	3	2
	99	0	2
CLARKSON 1 (PS)			
	99	0	2
CLIFTON (PS)			
	99	0	3
COOKSVILLE CREEK (PS)			
	24	2	1
	43	3	1
CORLISS (PS)			
	99	0	2
CORPUS CHRISTI (CS)			
	99	0	2
CORSAIR (PS)			
	24	1	1
	43	2	2
DARCEL AVENUE (PS)			
	99	0	1
DIVINE MERCY (CS)			
	43	2	1
	99	0	1
DIXIE (PS)			
	43	2	1
DUNRANKIN DRIVE (PS)			
	2	43	1
	24	1	1
	43	2	2
	99	0	1

7.1c

October 2016

<i>School Name</i>	<i>Offence Code</i>	<i>Issued Tickets</i>	<i>Total Visits</i>
EDENROSE (PS)	27	12	3
	43	8	3
EDENWOOD (PS)	99	0	3
ELLENGALE (PS)	17	1	1
	43	1	1
	99	0	1
ERIN CENTRE MIDDLE SCHOOL (PS)	42	1	1
	43	1	1
	99	0	1
ERIN MILLS (PS)	99	0	2
FAIRVIEW (PS)	43	8	1
FAIRWIND (PS)	43	4	1
FALLINGBROOK (PS)	7	1	1
	27	1	1
	43	61	5
	99	0	1
FATHER DANIEL ZANON (CS)	99	0	1
FLORADALE (PS)	12	1	1
	42	1	1
	43	4	3

7.1d

October 2016

<i>School Name</i>	<i>Offence Code</i>	<i>Issued Tickets</i>	<i>Total Visits</i>
FOREST AVENUE (PS)	42	1	1
	43	3	1
	99	0	6
FOREST GLEN (PS)	43	2	1
	99	0	1
GLENHAVEN (PS)	99	0	2
	99	0	2
GREEN GLADE (PS)	99	0	2
	99	0	2
HAWTHORN (PS)	43	1	1
	43	1	1
HAZEL MCCALLION SR. (PS)	27	1	1
	99	0	1
HILLCREST (PS)	99	0	2
	99	0	2
HILLSIDE (PS)	43	2	2
	99	0	1
HUNTINGTON RIDGE (PS)	17	1	1
	43	3	3
	99	0	1
JANET I. MCDOUGALD (PS)	99	0	1
	99	0	3
JOHN CABOT (CS)	99	0	3
JOHN XXIII (CS)			

7.1e

October 2016

<i>School Name</i>	<i>Offence Code</i>	<i>Issued Tickets</i>	<i>Total Visits</i>
LANCASTER (PS)	43	3	2
	15	2	1
	42	1	1
LEVI CREEK (PS)	43	6	4
	43	5	3
LORNE PARK 1 (PS)	99	0	1
MARY FIX CATHOLIC (CS)	43	1	1
	99	0	1
MCBRIDE (PS)	99	0	2
	8	1	1
MCKINNON (PS)	15	1	1
	43	9	5
	15	1	1
MEADOWVALE (PS)	42	1	1
	99	0	1
MEADOWVALE VILLAGE (PS)	99	0	1
	43	1	1
METROPOLITAN ANDREI (CS)	99	0	1
	43	6	4
MIDDLEBURY (PS)	99	0	1
MINEOLA (PS)	99	0	1

7.1F

October 2016

<i>School Name</i>	<i>Offence Code</i>	<i>Issued Tickets</i>	<i>Total Visits</i>
MORNING STAR MIDDLE SCHOOL (PS)	43	2	1
	99	0	1
MUNDEN PARK (PS)	12	1	1
	99	0	1
NAHANI WAY (PS)	27	1	1
	43	1	1
	99	0	2
OAKRIDGE (PS)	42	1	1
	99	0	1
OSCAR PETERSON (PS)	12	1	1
	24	1	1
	43	5	2
OSPREY WOODS (PS)	17	1	1
	27	1	1
	43	2	2
OUR LADY OF GOOD VOYAGE (CS)	27	2	1
	99	0	2
OUR LADY OF MERCY (CS)	43	6	2
	99	0	1
OWENWOOD (PS)	99	0	2
PLUM TREE PARK (PS)			

7.19

October 2016

<i>School Name</i>	<i>Offence Code</i>	<i>Issued Tickets</i>	<i>Total Visits</i>
	3	1	1
	7	1	1
	43	5	3
	99	0	1
QUEEN ELIZABETH (PS)			
	99	0	2
QUEEN OF HEAVEN (CS)			
	43	4	1
	99	0	3
QUEENSTON DRIVE (PS)			
	42	5	1
RICK HANSEN (PS)			
	42	1	1
	43	88	7
RIDGEWOOD (PS)			
	43	5	1
RIVERSIDE (PS)			
	42	2	1
RUTH THOMPSON MIDDLE SCHOOL(P			
	43	2	1
	99	0	1
SAN LORENZA RUIZ (CS)			
	43	1	1
SAWMILL VALLEY (PS)			
	99	0	1
SHELTER BAY (PS)			
	43	6	1
SHERIDAN PARK (PS)			
	99	0	1
SHERWOOD MILLS (PS)			

7.1h

October 2016

<i>School Name</i>	<i>Offence Code</i>	<i>Issued Tickets</i>	<i>Total Visits</i>
	7	1	1
	24	1	1
	26	1	1
SILVERTHORN (PS)	43	2	1
SPRINGFIELD (PS)	99	0	1
ST. ALFRED (CS)	27	6	3
	43	1	1
ST. BARBARA (CS)	27	3	1
	99	0	3
ST. BASIL (CS)	43	2	1
	99	0	3
ST. BERNADETTE (CS)	27	1	1
	43	1	1
ST. BERNARD OF CLAIRVAUX	15	1	1
	43	9	3
ST. CHARLES GARNIER (CS)	99	0	1
ST. CHRISTOPHER (CS)	99	0	2
ST. CLARE (CS)	43	2	1
ST. DAVID OF WALES (CS)	8	1	1

7.1.

October 2016

<i>School Name</i>	<i>Offence Code</i>	<i>Issued Tickets</i>	<i>Total Visits</i>
	99	0	1
ST. EDITH STEIN (CS)			
	15	1	1
	99	0	3
ST. EDMUND (CS)			
	99	0	1
ST. ELIZABETH SETON (CS)			
	99	0	2
ST. FAUSTINA (CS)			
	7	1	1
	12	3	3
	99	0	9
ST. FRANCIS OF ASSISI (CS)			
	99	0	2
ST. GREGORY (CS)			
	99	0	2
ST. HELEN (CS)			
	43	2	2
	99	0	1
ST. HERBERT (CS)			
	27	1	1
	31	1	1
	43	5	3
ST. JEROME (CS)			
	99	0	1
ST. JOHN OF THE CROSS (CS)			
	27	2	1
	43	2	2
ST. JOSEPH 1 (CS)			
	99	0	1

713

October 2016

<i>School Name</i>	<i>Offence Code</i>	<i>Issued Tickets</i>	<i>Total Visits</i>
ST. JULIA (CS)	7	1	1
	43	2	1
ST. LUKE (CS)	43	2	1
	99	0	6
ST. MARGARET OF SCOTLAND (CS)	99	0	6
	99	0	1
ST. MARK (CS)	99	0	1
	17	1	1
ST. MATTHEW (CS)	43	1	1
	42	2	1
ST. PAUL (CS)	42	2	1
	43	4	1
ST. PIO OF PIETRELCINA (CS)	42	1	1
	43	2	1
ST. RAPHAEL (CS)	42	1	1
	43	2	1
ST. RAYMOND (CS)	27	1	1
	99	0	3
ST. RICHARD (CS)	99	0	3
	99	0	1
ST. SEBASTIAN (CS)	99	0	1
	43	1	1
ST. SIMON STOCK (CS)	99	0	2
	99	0	2
ST. SOFIA (CS)	99	0	2

7.1k

October 2016

<i>School Name</i>	<i>Offence Code</i>	<i>Issued Tickets</i>	<i>Total Visits</i>
ST. TERESA OF AVILA (CS)	12	1	1
	15	1	1
	27	1	1
	43	1	1
	99	0	1
ST. THERESE OF THE CHILD JESUS	99	0	1
ST. THOMAS MORE (CS)	99	0	1
ST. TIMOTHY (CS)	8	2	2
	12	2	2
	43	13	7
	99	0	13
ST. VINCENT DE PAUL (CS)	43	1	1
	99	0	4
STS. MARTHA AND MARY (CS)	8	1	1
	43	4	2
	99	0	5
STS. PETER AND PAUL (CS)	27	1	1
	43	1	1
	99	0	2
TECUMSEH (PS)	43	4	1
THE VALLEYS (PS)	42	1	1

7.12

October 2016

<i>School Name</i>	<i>Offence Code</i>	<i>Issued Tickets</i>	<i>Total Visits</i>
THOMAS STREET MIDDLE (PS)	99	0	1
THORNWOOD (PS)	43	4	1
TOMKEN ROAD (PS)	42	2	1
TRELAWNY (PS)	99	0	1
VISTA HEIGHTS (PS)	2	2	1
	12	1	1
WHITEHORN (PS)	12	1	1
	43	4	2
	99	0	1
WHITEOAKS (PS)	43	2	2
WILLOW WAY (PS)	3	1	1
	24	1	1
	27	1	1
	43	1	1
	99	0	1
WOODLANDS, THE (PS)	99	0	2
Grand Total for month		403	527
Grand Total for 2016		403	527

7.1m

October 2016

<i>School Name</i>	<i>Offence Code</i>	<i>Issued Tickets</i>	<i>Total Visits</i>
--------------------	---------------------	-----------------------	---------------------

Please note: Offence Code 99 means no tickets were issued.

8.1

Traffic Safety Council
 NOV 3 U 2016

Oct-16			
Reference	School / Location	Item	Action
TSC-0091-2016	St. Therese of the Child Jesus Catholic School	2. That Transportation and Works be requested to review signage in front of St. Therese of the Child Jesus Catholic School	utility locates required to accommodate this request
TSC-0092-2016	St. Bernadette Catholic School	2. That Transportation and Works be requested to paint Zebra Markings at the intersection of Creditview Road and South Parade Court/Rathkeale Road.	Forwarded to Road Safety
TSC-0098-2016	Meadowvale Village Public School, Davi Leeder Middle School, and Rotherglen Elementary School	4. That Transportation and Works be requested to consider the feasibility to conduct a warrant study for a traffic signal at the intersection of Second Line West and Old Derry Road, for students attending Meadowvale Village Public School, David Leeder Middle School and Rotherglen Elementary School	Forwarded to Traffic Signals and Streetlighting
TSC-0099-2016	McKinnon Public School	4. That Transportation and Works be requested to review the signage at the intersection of Tacc Drive and Tenth Line West for the students attending McKinnon Public School	work order issued