



MISSISSAUGA

AGENDA

FACILITY ACCESSIBILITY DESIGN SUBCOMMITTEE OF THE MISSISSAUGA ACCESSIBILITY ADVISORY COMMITTEE

THE CORPORATION OF THE CITY OF MISSISSAUGA

www.mississauga.ca

Monday, June 24, 2019 – 1:30PM

**Committee Room D – 2nd Floor, Civic Centre
300 City Centre Drive, Mississauga L5B 3C1**

MEMBERS

Clement Lowe, Citizen Member (CHAIR)
Emily Daigle, Citizen Member
Carol-Ann Chafe, Citizen Member
Steven Viera, Citizen Member
Asim Zaidi, Citizen Member
Naz Husain, *ex-officio*

Contact:

Dayna Obaseki, Legislative Coordinator
Legislative Services, 905-615-3200 ext. 5425
dayna.obaseki@mississauga.ca

Find it Online

<http://www.mississauga.ca/portal/cityhall/accessibilityadvisory>

CALL TO ORDER

ITEMS FOR CONSIDERATION

1. LifeCycle Replacement – Lakefront Promenade Park

Kate Preston, Landscape Architect, Dillon Consulting Limited

Janet Lack, Project Leader - Landscape Architect, Parks Program Delivery

DATE OF NEXT MEETING

Monday, September 30, 2019 - 1:30 PM, Civic Centre, Committee Room D – 300 City Centre Drive, Mississauga

ADJOURNMENT



LIFECYCLE REPLACEMENT

Lakefront Promenade Park

Facility Accessibility Design Standards Meeting

June 24, 1:30pm

Key Map – Location in Mississauga



Project Background

To provide design services for the replacement of various paving surfaces that have reached the end of their lifecycle.



Project Context

The City of Mississauga has identified areas within Lakefront Promenade Park that require lifecycle replacement:

- Area 1: A.E Crookes Headland Trail
- Area 4: Goodwin Drive Trail Connection
- Area 7: Lakefront Promenade Public Marina Trail
- Area 9: Douglas Kennedy Headland Trail



Overview

- Pathway materials;
- Pathway slopes;
- Pathway widths; and
- Accessible components.





Area 1: A.E Crookes Headland Trail

Detail Standards

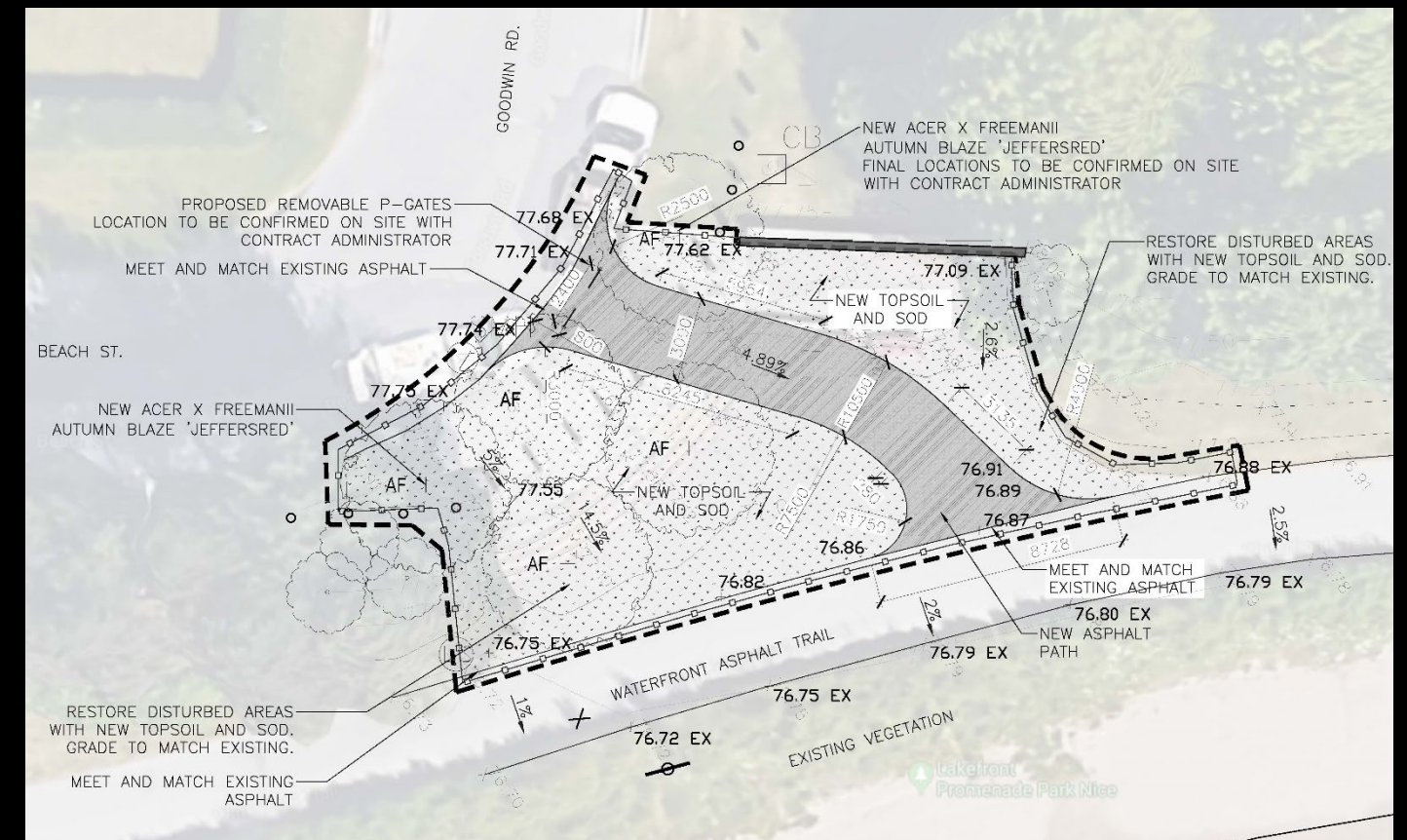
Waterfront Trail:

- **Maximum slope of less than 5.0%**
- **Travelled width of minimum 3.0m clear**
- **New decking**
- **New concrete or asphalt pavement**
- **Update benches to current standards**
- **Edge protection along Waterfront Trail**

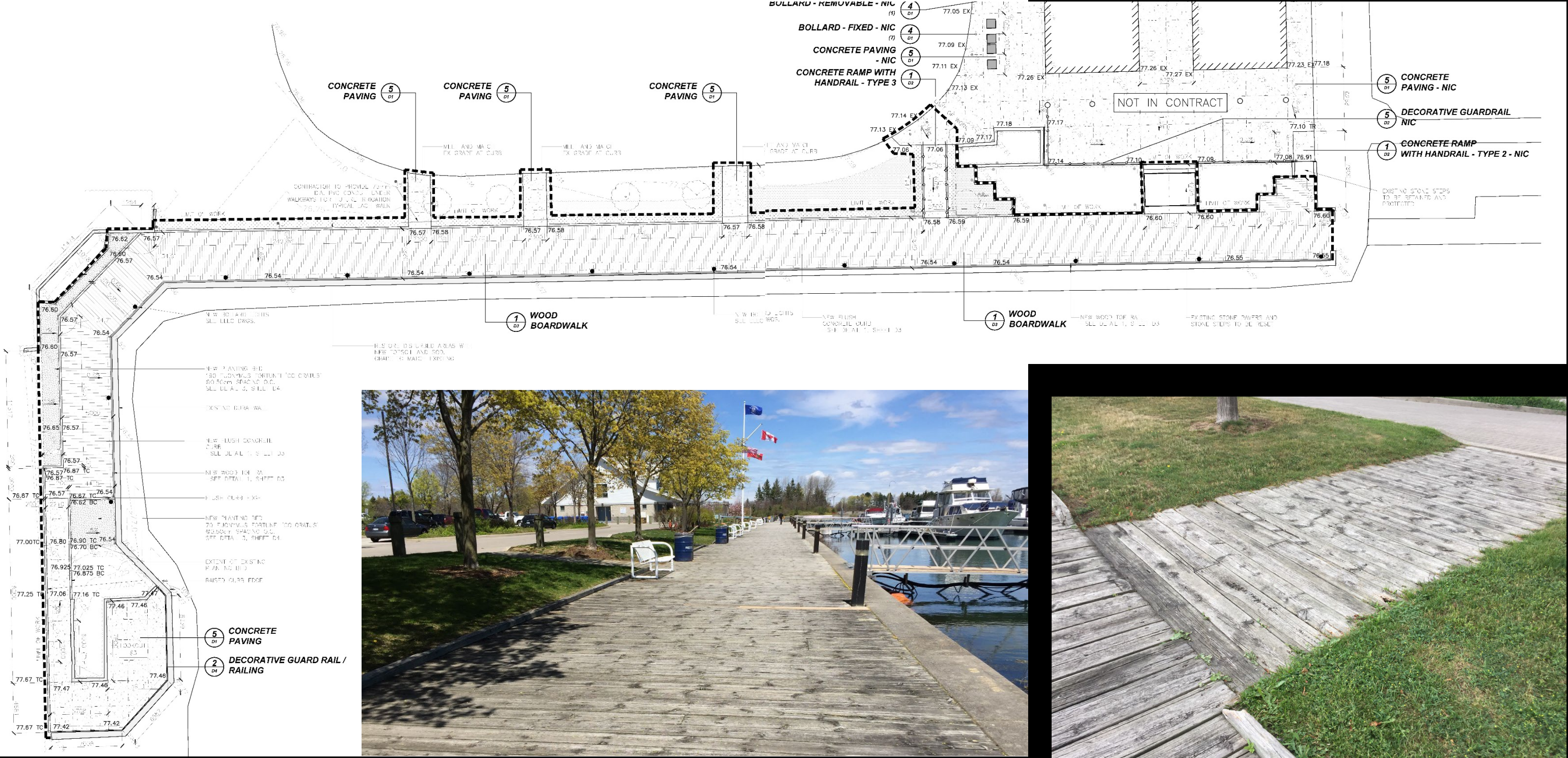
Secondary Pathways / Trail Connections

- **Reduce existing ramp slopes to maximum 6.7% slope**
- **New handrails.**
- **New asphalt paving**
- **Travelled width of minimum 2.0m clear**

- **Replace stone steps and ramp to one accessible path with maximum slope of less than 5.0%**
- **Travelled width of minimum 3.0m clear**
- **Remove existing bollards**
- **Provide landscape treatment of sod and trees**



Area 7: Lakefront Promenade Public Marina Trail

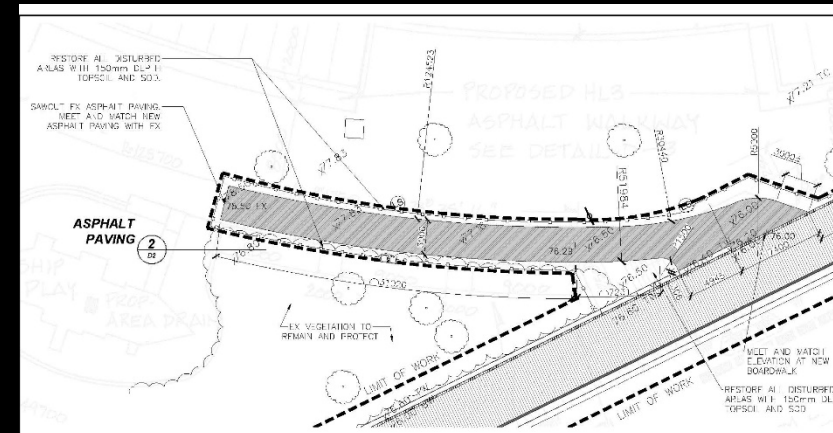


Area 7: Lakefront Promenade Public Marina Trail

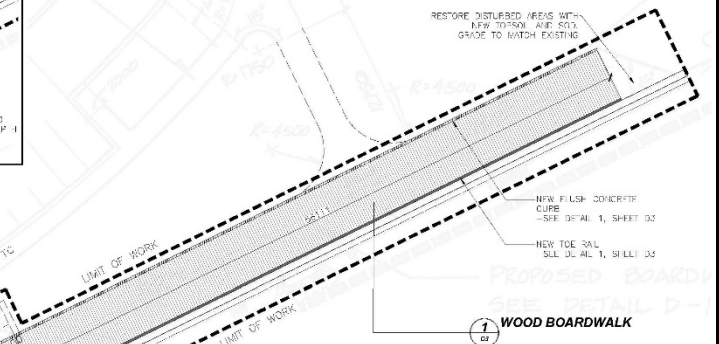
Detail Standards

Primary Trail and Trail Connections:

- New decking
- Main travelled width of minimum 4.5m clear
- Secondary travelled width of minimum 2.0m clear
- Reduce existing ramp slopes to less than 5% where feasible and to a maximum 6.7%
- Edge protection along main Marina trail
- Up-grade trail lighting
- New hand and guardrails



THE OWNER OR DESIGN CONSULTING LIMITED DO NOT GUARANTEE THE ACCURACY OF THE "AS-BUILT" CONDITIONS SHOWN ON THE BACKGROUND DRAWING. THE CONTRACTOR IS REQUIRED TO CONFORM TO ALL EXISTING CONDITIONS TO THOSE SHOWN ON THE BACKGROUND DRAWING, AND BRING TO THE ATTENTION OF THE CONTRACT ADMINISTRATOR AND THE CITY ALL SITE CONDITIONS THAT DIFFER AND THAT MAY HAVE AN IMPACT ON THE PROPOSED WORKS, PRIOR TO CONSTRUCTION START-UP.



Area 9: Douglas Kennedy Headland Trail

Detail Standards

Primary Trail and Trail Connections:

- New decking
- Main travelled width of minimum 4.5m clear
- Secondary travelled width of 3.0m clear
- Reduce trail connections slopes to less than 5% where feasible
- Edge protection along main Waterfront Trail



Questions?