



## **AGENDA**

---

### **FACILITY ACCESSIBILITY DESIGN SUBCOMMITTEE OF THE MISSISSAUGA ACCESSIBILITY ADVISORY COMMITTEE**

THE CORPORATION OF THE CITY OF MISSISSAUGA  
[www.mississauga.ca](http://www.mississauga.ca)

**MONDAY, AUGUST 29, 2016 – 1:30 PM**

**Committee Room D – 2<sup>nd</sup> Floor, Civic Centre  
300 City Centre Drive, Mississauga L5B 3C1**

### **MEMBERS**

Clement Lowe, Citizen Member (CHAIR)  
Mashkoor Sherwani, Citizen Member  
Melanie Taddeo, Citizen Member  
Asim Zaidi, Citizen Member  
Carol-Ann Chafe, *ex-officio*

### **Contact:**

Karen Morden, Legislative Coordinator  
Legislative Services, 905-615-3200 ext. 5471  
[karen.morden@mississauga.ca](mailto:karen.morden@mississauga.ca)

### **Find it Online**

<http://www.mississauga.ca/portal/cityhall/accessibilityadvisory>

## **CALL TO ORDER**

## **ITEM FOR CONSIDERATION**

### **1. Fire Station 120 – New Construction**

Frank Alaimo, Principal of Alaimo Architecture Inc., Laila Gabiazon, Project Manager, Facilities & Property Management, and Brian Walsh, Assistant Fire Chief with respect to Fire Station 120 – New Construction.

## **DATE OF NEXT MEETING**

**Facility Accessibility Design Subcommittee** – Monday, September 26, 2016; 1:30 PM, Civic Centre, Committee Room D – 300 City Centre Drive, Mississauga

## **ADJOURNMENT**

Mississauga Fire & Emergency Services  
Fire Station 120 - 125 Eglinton Avenue West

Accessibility Committee Presentation August 29, 2016



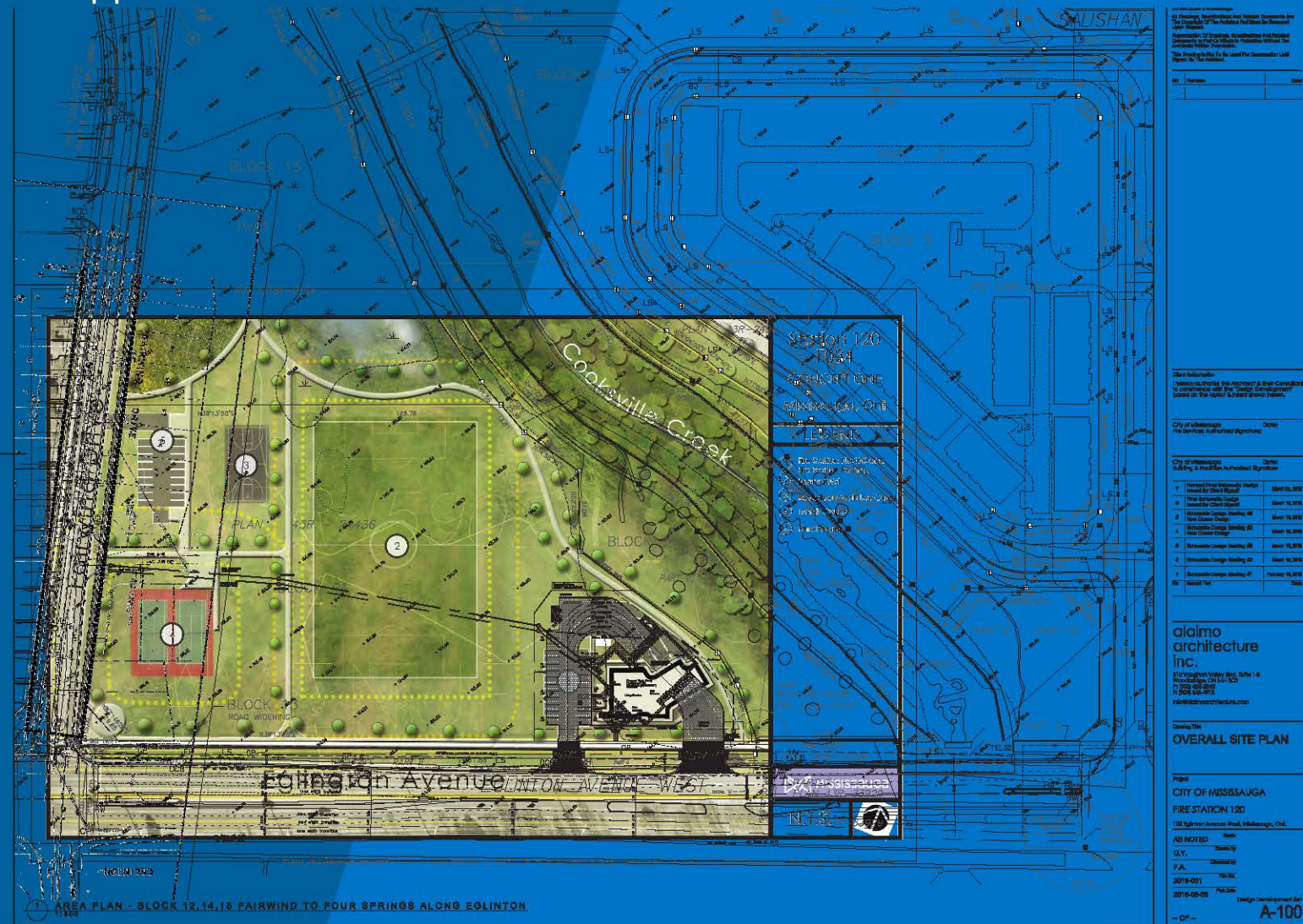


## Mississauga Fire & Emergency Services Fire Station 120 - 125 Eglinton Avenue West

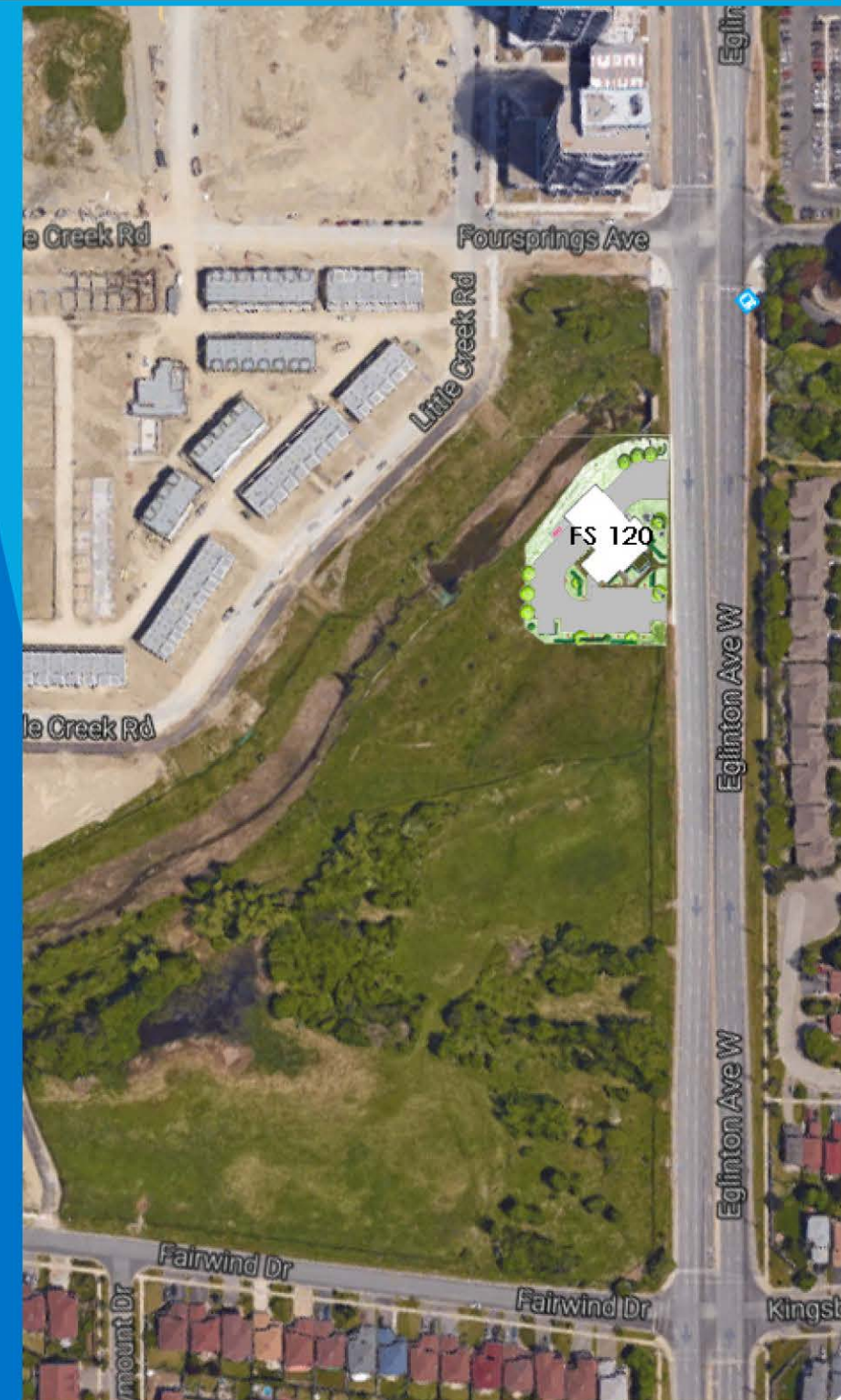
### Aerial Site Context

#### Site Location

- North of Fairwind Drive, West of Eglinton Avenue, South of Four Springs Avenue
- Site situated on north east corner of existing City owned park lands.
- Creek adjacent to north side of site.
- Site located on the west side fronting Eglinton Avenue.
- Residential neighbourhood to the east opposite Eglinton Avenue and south opposite Fairwind Drive.



Soccer Field Plan along Eglinton  
(rotated 90 CCW from adjacent image)



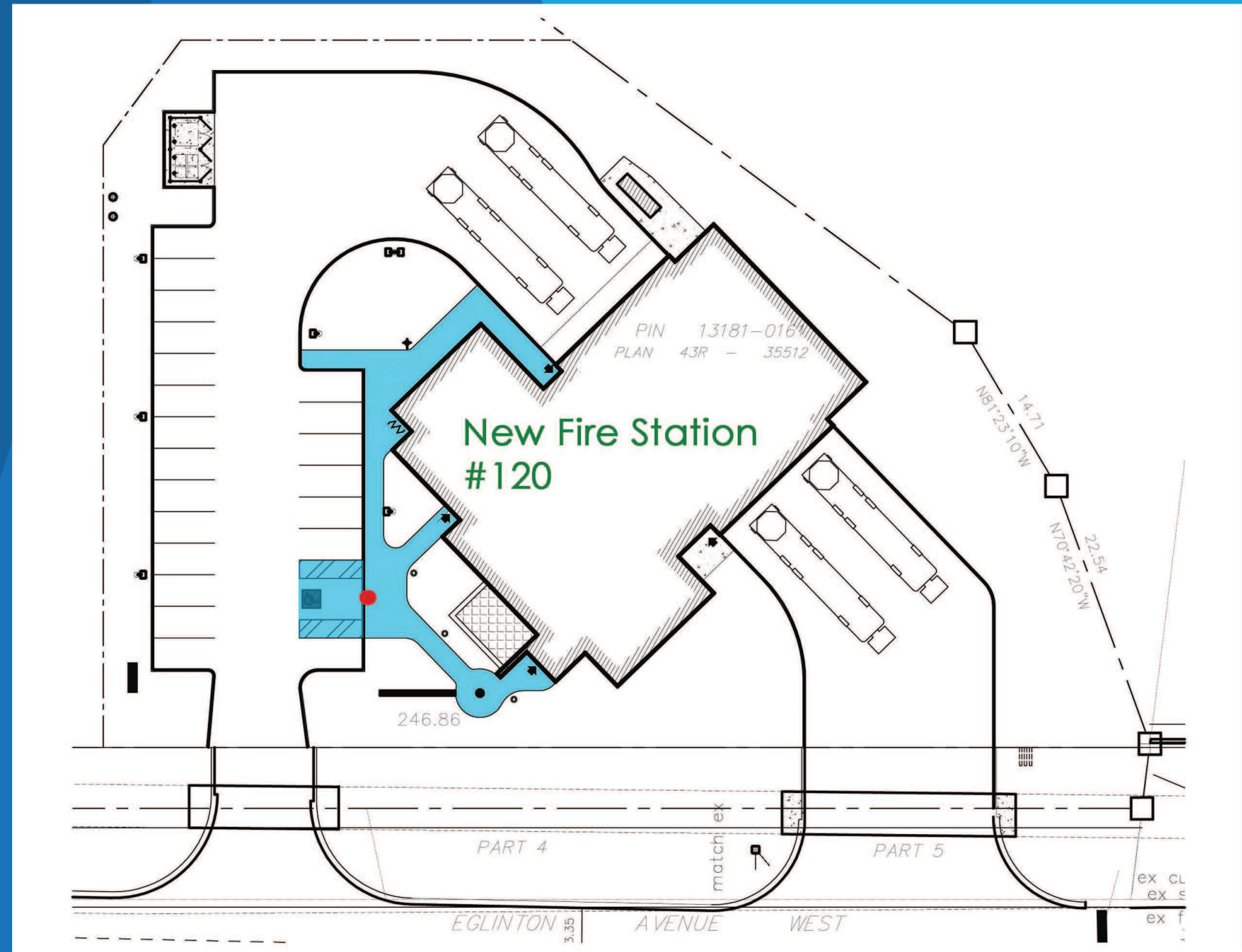
Fairwind to Four Springs along Eglinton



# Mississauga Fire & Emergency Services Fire Station 120 - 125 Eglinton Avenue West

## Site - Access Route & Accessible Parking

- 1 Accessible Parking Space located within 30m of Accessible entrances. (shown in blue)
- Accessible Parking Space complete with MADH Signage (sign post indicated by red dot)
- Accessible Parking Space is flush with Accessible Walkway areas (shown in blue)

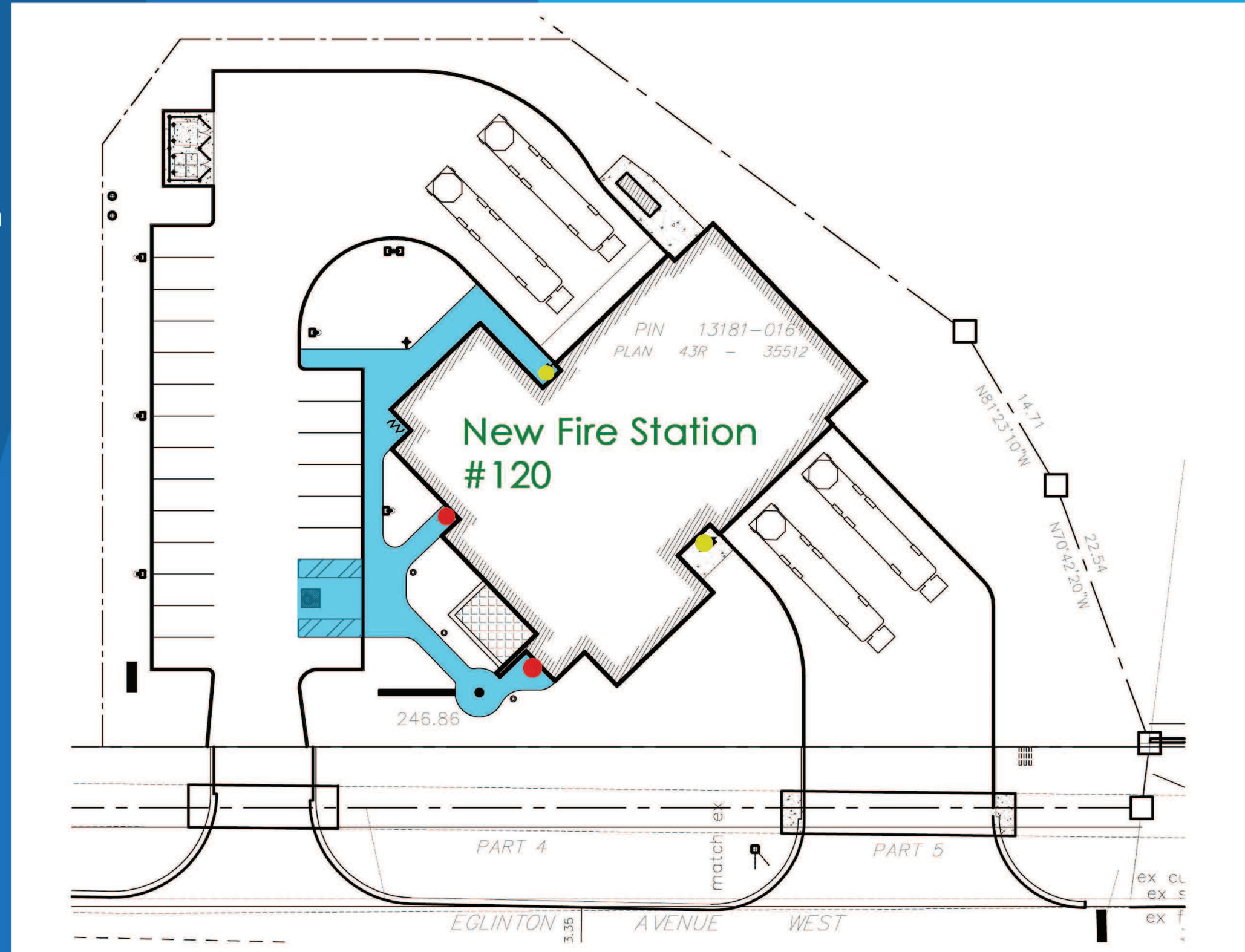




## Mississauga Fire & Emergency Services Fire Station 120 - 125 Eglinton Avenue West

### Site - Accessible Entrances

- 4 Access Points into Building of which 2 (50%) are Accessible
- Primary Entrance & Secondary Staff Entrances are both Accessible and are complete with power door operators (indicated by red dots)
- Tertiary Entrances for Staff use to access apparatus driveways, not intended for public use although doors & walkway are flush and do have required 300/600mm O.B.C. clearances but do not have power operators.

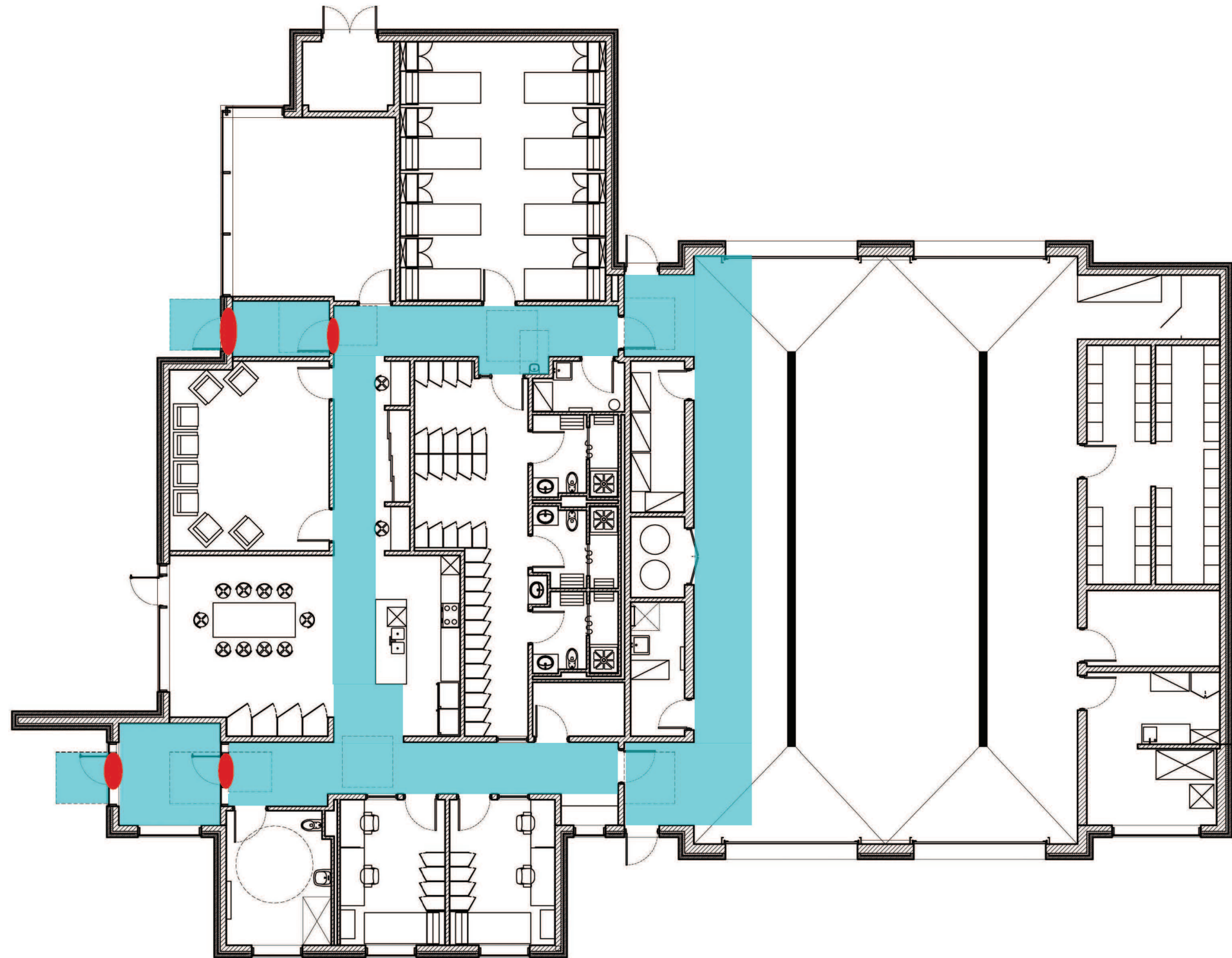




Mississauga Fire & Emergency Services  
Fire Station 120 - 125 Eglinton Avenue West

Building - Interior Accessible Route

- Power Operators at Primary Public Entrance & Secondary Staff Entrance (indicated by red ovals)
- Accessible Circulation Route within building (shown in light blue). All doors on this path have 300/600 clearances & appropriately sized approach clear spaces.
- Accessible Circulation Route width is 1610mm wide consistently.

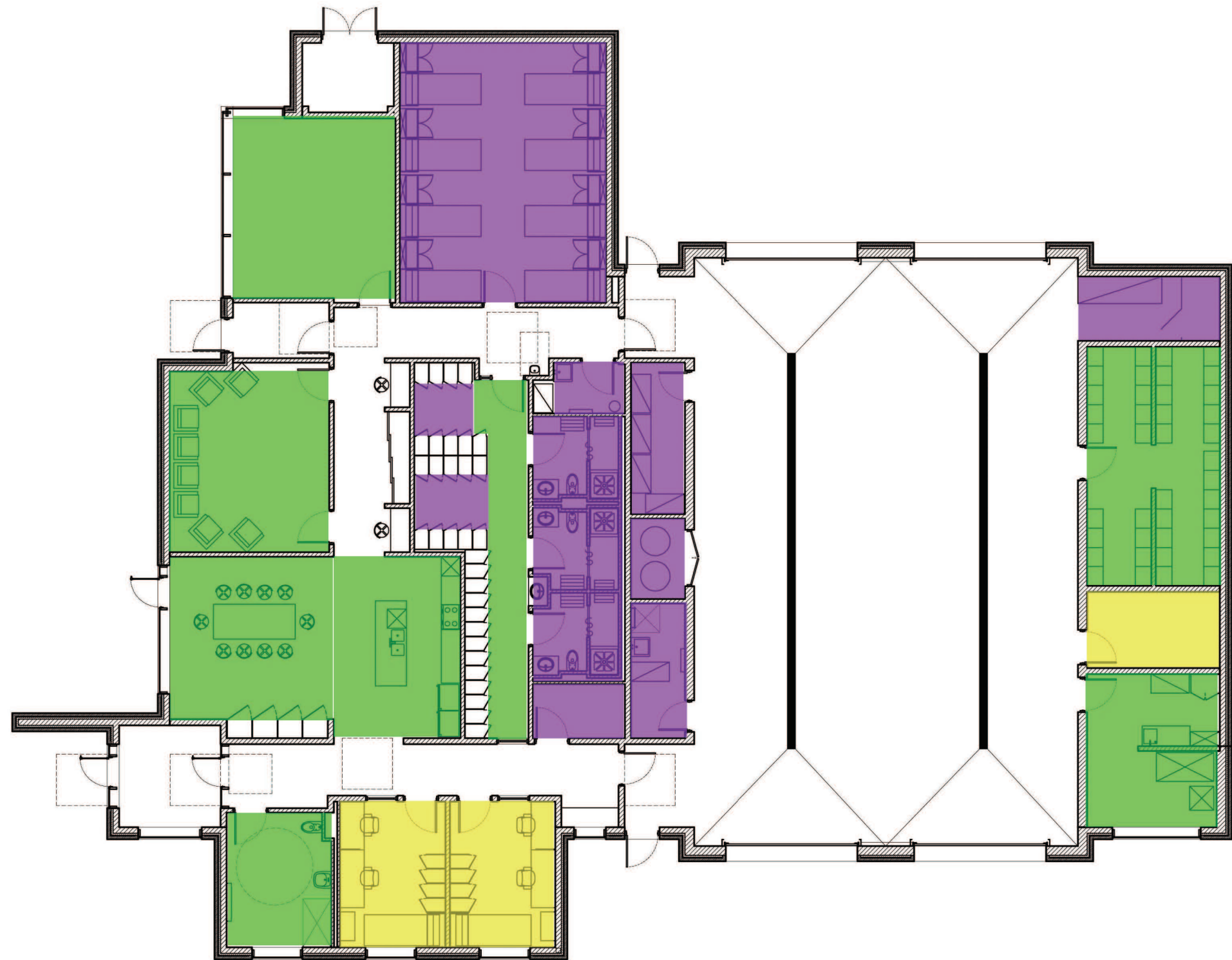




## Mississauga Fire & Emergency Services Fire Station 120 - 125 Eglinton Avenue West

## Building - Interior Accessible Spaces

- Rooms shown in Green are Fully Accessible Spaces designed to meet both O.B.C. & FADS for Public & Staff uses including Public Tours & daily Staff activities.
- Rooms shown in Yellow are Partially Accessible Spaces designed to meet O.B.C. requirements but may not fully meet FADS for scooter access etc. These spaces are intended to be used by Staff and may accommodate a Supervisor or other City of Mississauga employee requiring Accessible access.
- Rooms shown in Purple are Not Accessible Spaces and are either exempt from FADS or are operationally restricted to Staff only. These spaces include Staff Washrooms, Dormitories, Hot Water Rooms, Janitor Closets, I.T. Room, & Sprinkler Service Area- note these spaces are generally designed to O.B.C. but may be lacking in approach/departure space.





## Mississauga Fire & Emergency Services Fire Station 120 - 125 Eglinton Avenue West

## Conclusion

- Relatively small facility designed primarily for use by Fire & Emergency Services staff. However facility is open to the public both casually and in emergency situations.
- Facility designed to be fully accessible for Public to visit and tour spaces of interest to public.
- All interior amenities provided are accessible (Drinking Fountain, Universal Washroom with shower).
- Exterior Walkways are accessible and entrances are located in close proximity to parking.

Questions / Comments