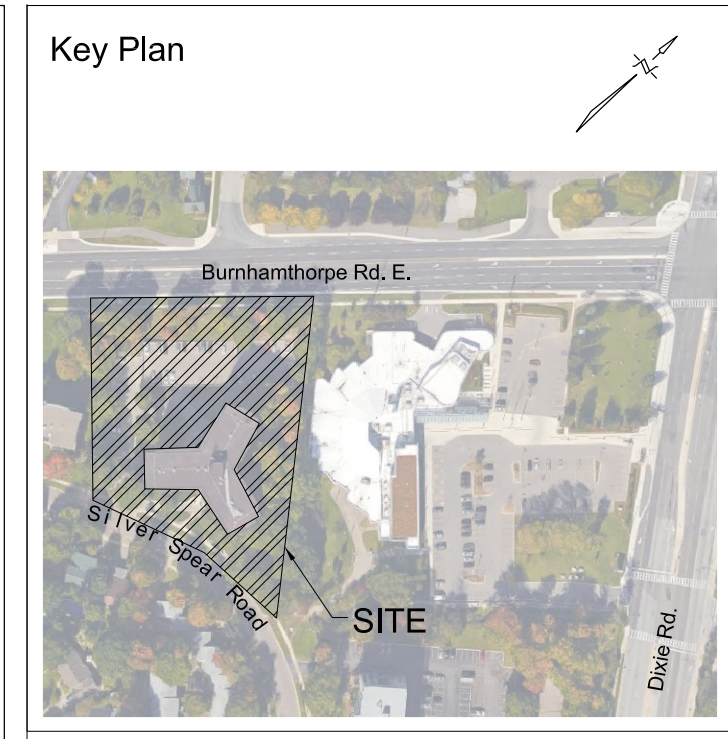


1 TREE PROTECTION PLAN



2 SITE IMAGES



- Legend**
- EXISTING TREE TO BE PRESERVED
 - EXISTING TREE TO BE REMOVED
 - EXISTING TREE IN TERMINAL DECLINE TO BE REMOVED
 - DEAD TREE TO BE REMOVED
 - EXISTING TREE TO BE INJURED
 - TREE PROTECTION FENCING
 - VIEWSHED

ISA
MEMBER
 STANLEY LUK - ISA# ON-0994

No	Date	Revisions	By
2.0	11.06.2017	ISSUED FOR RE-ZONING APPLICATION	GM
1.0	10.12.2017	ISSUED FOR COORDINATION	GM

ASSOCIATION OF LANDSCAPE ARCHITECTS
 MEMBER
 DESIGNED BY: [Signature]
 North Arrow

the mbtw group
 255 Wilsford Ave., Unit 14 | Toronto, Ontario, Canada M6M 1S8
 T: (416) 449-7767 | F: (416) 449-1803 | www.mbtw.com

Project Name:
1315 Silver Spear Road
 Starlight Investments
 City of Mississauga

Sheet Title:
Tree Protection Plan

Designed: GM	Drawn: DI	Scale: 1:250	Drawing No.: TP-1
Date of Drawing: August 2017	Job No.: SIS001		

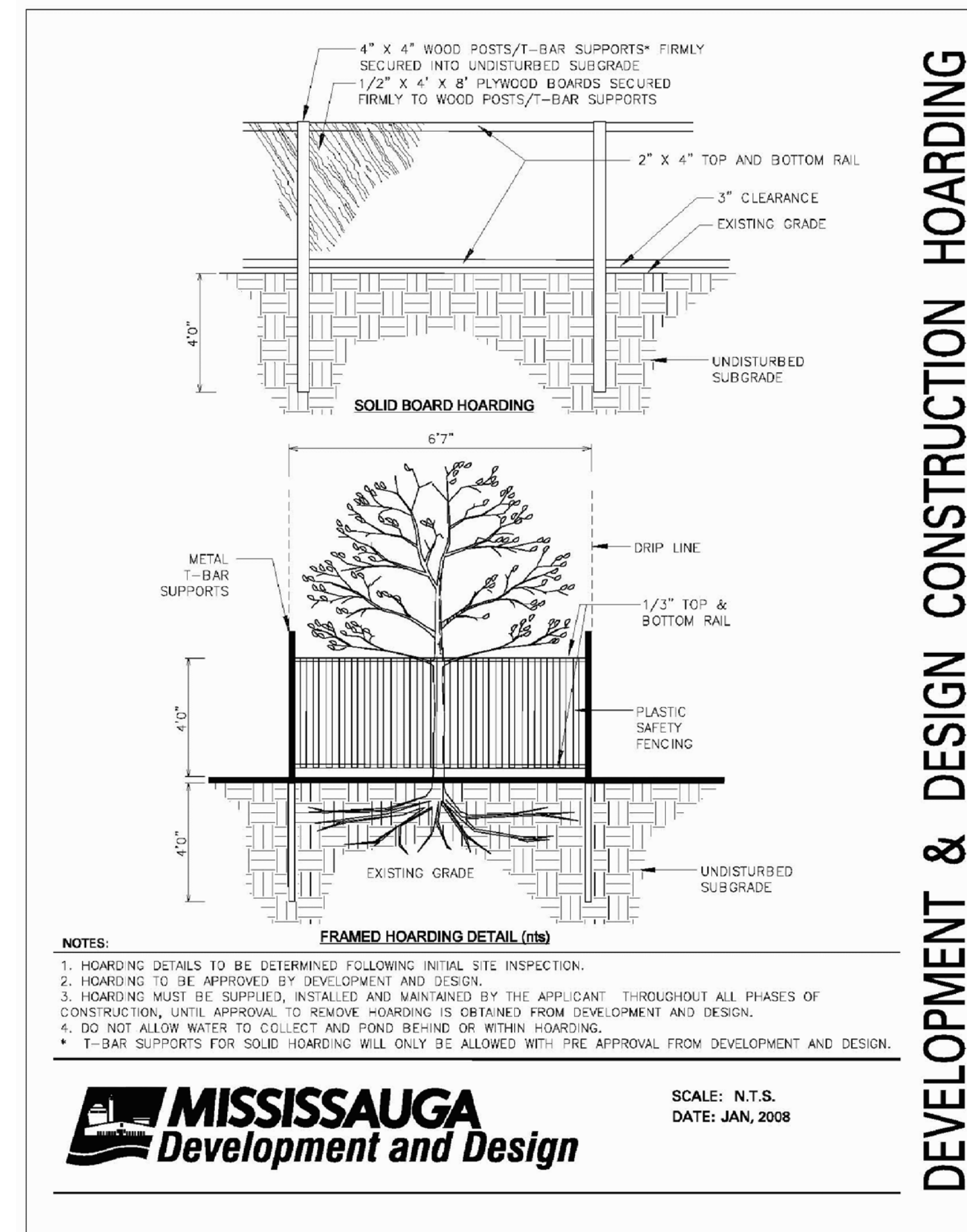
NOTE: This drawing, as an instrument of service, is provided by The MBTW Group. The contractor shall check and verify all dimensions and report all errors and omissions, to the Landscape Architect whose seal is affixed to this drawing, before proceeding with the work. This drawing is not to be scaled. All dimensions are in millimeters unless otherwise noted. Stake out all utilities prior to commencing work.

Regarding the Tree Preservation Plan: The trees reflected in this plan are the result of an inspection as noted on the Arborist Report. The location of tree numbers 504, 506, 524, and 566 are approximate and those locations were not provided in the property survey.

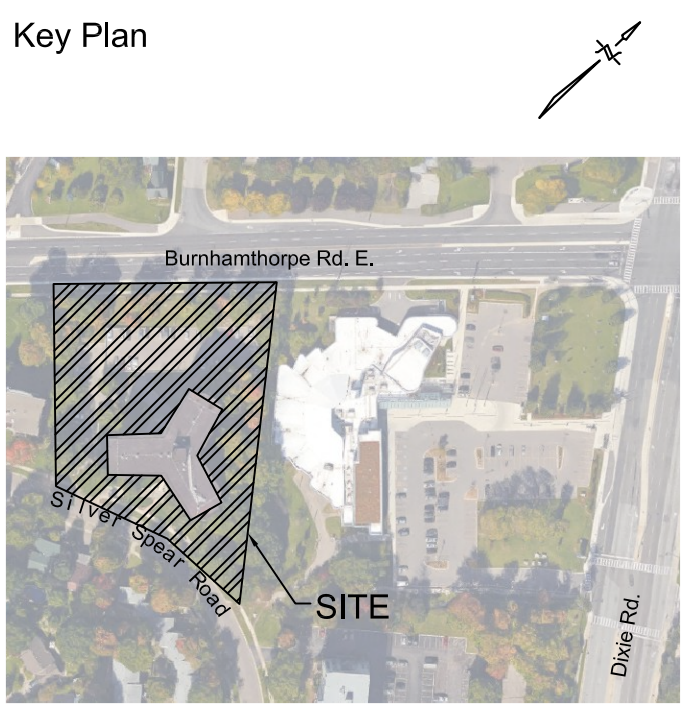
TAG #	BOTANICAL NAME	COMMON NAME	DBH (cm)	SPR (m)	CONDITION	REMARKS	STATUS	LOCATION	TPZ
501	Quercus rubra	Red Oak	98	18	Good	Tree is in good condition	Injure	West Property Line	9
502	Malus domestica	Common Apple	12+14	4	Poor	2 Trunk clump. Canopy dieback-boundary tree	Preserve	West Property Line	2
503	Acer platanoides	Norway Maple	24+16	6	Poor	2 Trunk clump. Boundary Tree Tree growing through chain link fence. Trunk girdled.	Remove	West Property Line	3
504	Acer saccharum	Sugar Maple	12	4	Fair	Tree girdled by chainlink fence Boundary Tree	Remove	West Property Line	2
505	Quercus rubra	Red Oak	48	8	Good	Boundary tree. Trunk originates on neighboring property. Canopy form good. Foliage exhibits anthracnose fungal damage	Remove	West Property Line	4
506	Fraxinus americana	White Ash	12	6	Poor	EAB damage. Tree leaning east.	Remove	West Property Line	3
507	Acer saccharum	Sugar Maple	28+27	6	Poor	2 trunk clump. South trunk exhibits cavity decay, top 75% of canopy dead. North trunk in good condition. Included bark.	Remove	West Property Line	3
508	Acer saccharum	Sugar Maple	30	6	Fair	Bark decay on N/W side of trunk. Canopy lopsided. Favouring North side of trunk.	Remove	North West Corner	3
509	Carya cordiformis	Bitternut Hickory	49	12	Good	Sugar maple sapling growing at North Side of trunk.	Remove	North West Corner	6
510	Acer saccharum	Sugar Maple	28	6	Good		Remove	North West Corner	3
511	Acer saccharum	Sugar Maple	46	10	Good	Canopy leaning east.	Remove	North West Corner	5
512	Acer saccharum	Sugar Maple	22	6	Poor	Severe cavity decay. Top 50% of canopy is dead.	Remove	North West Corner	3
513	Pinus nigra	Austrian Pine	23	3	Fair	Slight lean SW. Canopy lopsided due to shade from adjacent trees.	Remove	North West Corner	1.5
514	Acer saccharum	Sugar Maple	36	6	Good	2 Co-dominant leaders	Remove	North West Corner	3
515	Acer saccharum	Sugar Maple	32	6	Good	Canopy on South and East side only.	Remove	North West Corner	3
516	Acer saccharum	Sugar Maple	28	6	Fair	Minor cavity decay in trunk. Canopy health good.	Remove	North West Corner	3
517	Acer saccharum	Sugar Maple	26	6	Good		Remove	North side of site	3
518	Acer saccharum	Sugar Maple	24	6	Good	Slight lean south.	Remove	North side of site	3
519	Acer saccharum	Sugar Maple	30	6	Good		Remove	North side of site	3
520	Acer saccharum	Sugar Maple	32	6	Good		Remove	North side of site	3
521	Acer saccharum	Sugar Maple	42	6	Terminal Decline	Trunk leaning north across chainlink fence. Insect boreholes on trunk. Canopy sparse. Severe bark decay on south side of tree.	Remove	North side of site	3
522	Acer saccharum	Sugar Maple	46	8	Good	Top of canopy sparse.	Remove	North side of site	4
523	Quercus rubra	Red Oak	60	12	Good		Remove	North side of site	6
524	Quercus rubra	Red Oak	64	12	Good		Remove	North side of site	6
525	Quercus rubra	Red Oak			Dead		Remove	North east corner	0
526	Acer saccharum	Sugar Maple	26	6	Good		Remove	North east corner	3
527	Quercus rubra	Red Oak	56	12	Good		Remove	North east corner	6
528	Acer platanoides	Norway Maple	29	6	Good	Top of crown is missing.	Remove	North east corner	3
529	Quercus rubra	Red Oak	56	10	Fair	Dieback at top of canopy	Remove	North east corner	5
530	Robinia pseudoacacia	Black Locust	8,14,4,11	4	Poor	Stump sprout regeneration. Main trunk culgirdled by chainlink fence.	Remove	North east corner	2
531	Acer saccharum	Sugar Maple	23	6	Good		Remove	North east corner	3
532	Quercus alba	White Oak	55	12	Good	Canopy growth in good condition. Canopy lean east due to shading of adjacent trees.	Injure	North east corner	6
533	Ulmus pumila	Siberian Elm	32	6	Poor	Tree cut at 1.5m from grade. Stump sprout regeneration.	Preserve	North east corner	3
534	Acer saccharum	Sugar Maple	30	6	Fair	Canopy topped. Minor branch tip dieback	Remove	North east corner	3
535	Quercus rubra	Red Oak	56	12	Good	Canopy health good. Canopy shape lopsided, favouring south side of trunk.	Remove	East Boundary	6
536	Acer platanoides	Norway Maple	38	8	Poor	Canopy lopsided. West 1/2 of canopy removed. Severe surface root damage.	Remove	East Boundary	4
537	Acer platanoides	Norway Maple	37	8	Terminal Decline	Canopy health is good. 2 co-dominant leaders. Large injury on west side of trunk. Severe decay and carpenter ant damage observed in bark.	Remove	East Boundary	4
538	Acer platanoides	Norway Maple	21	6	Good	Tree growing at fence line	Preserve	East Boundary	3
539	Acer saccharum	Sugar Maple	49	12	Fair	Cavity at SW side of root flare. Canopy growth good	Preserve	East Boundary	6

1 Tree Inventory Table

TAG #	BOTANICAL NAME	COMMON NAME	DBH (cm)	SPR (m)	CONDITION	REMARKS	STATUS	LOCATION	TPZ
540	Acer saccharum	Sugar Maple	34	8	Poor	Top 25% of canopy is dead.	Remove	South of parking lot	4
541	Pinus nigra	Austrian Pine	38	6	Fair	Leaning north. Sapsucker holes on trunk.	Remove	South of parking lot	3
542	Pinus nigra	Austrian Pine	36	6	Fair	Leaning north. Canopy sparse. Sapsucker holes on trunk	Remove	South of parking lot	3
543	Betula papyrifera	Paper Birch	16	2	Terminal Decline	Canopy sparse. Cavity decay at base. Branch tip dieback	Remove	North of existing building	1
544	Betula papyrifera	Paper Birch	17	2	Terminal Decline	Canopy sparse. Cavity decay at base. Branch tip dieback	Remove	North of existing building	1
545	Acer saccharum	Sugar Maple	42	12	Good		Preserve	North of existing building	6
546	Acer saccharum	Sugar Maple	35	12	Good		Injure	North of existing building	6
547	Acer saccharum	Sugar Maple	44	10	Good		Preserve	East Boundary	5
548	Acer saccharum	Sugar Maple	41	10	Good	Canopy leaning south.	Preserve	East Boundary	5
549	Acer saccharum	Sugar Maple	19	8	Good		Preserve	East open space	3
550	Fagus grandifolia	American Beech	57	8	Poor	Advanced Beech bark disease. Canopy dieback	Preserve	East open space	4
551	Acer saccharum	Sugar Maple	44	8	Good	Canopy favouring east side of trunk.	Preserve	East open space	4
552	Fagus grandifolia	American Beech	56	12	Fair	Minor Beech bark disease damage. Canopy is in good condition.	Preserve	East open space	6
553	Fagus grandifolia	American Beech	36	12	Fair	Minor Beech bark disease.	Preserve	East open space	6
554	Acer saccharum	Sugar Maple	28	8	Good	Trunk leaning south east	Preserve	East open space	4
555	Quercus rubra	Red Oak	74	16	Good	Canopy lopsided favouring east side of trunk.	Preserve	East Boundary	8
556	Fagus grandifolia	American Beech	27	4	Poor	Severe Beech bark disease. canopy dieback	Preserve	East open space	2
557	Fagus grandifolia	American Beech	25	6	Fair	Minor Beech bark disease. canopy growth in in good condition.	Preserve	East open space	3
558	Acer saccharum	Sugar Maple	37	8	Good		Preserve	East open space	4
559	Acer saccharum	Sugar Maple	37	6	Good		Preserve	East open space	3
560	Quercus rubra	Red Oak	59	8	Good	Canopy growth narrow. Minor branch tip dieback	Preserve	East open space	4
561	Acer saccharum	Sugar Maple	49	10	Good		Preserve	East Boundary	5
562	Quercus rubra	Red Oak	81	12	Good		Preserve	East open space	6
563	Quercus rubra	Red Oak	61	10	Good	Canopy lopsided. Favouring south and west side of trunk.	Preserve	South east corner of existing building	5
564	Acer saccharum	Sugar Maple	29		Good	2 co-dominant leaders in canopy	Preserve	South east corner of existing building	0
565	Quercus rubra	Red Oak	77	12	Good		Preserve	East Boundary	6
566	Acer saccharum	Sugar Maple	36	8	Good	Adjacent tree.	Preserve	Neighboring east boundary	4
567	Pinus nigra	Austrian Pine	33	6	Fair	Minor dieback tip blight damage.	Remove	North west of existing building	3
568	Acer saccharum	Sugar Maple	47	8	Fair	Minor branch tip dieback on East side of canopy.	Remove	North west of existing building	4
569	Tilia cordata	Little Leaf Linden	38	6	Good		Remove	South of existing parking lot	3
570	Tilia cordata	Little Leaf Linden	16	4	Terminal Decline	Severe canker infection on bark. canopy decline	Remove	South of existing parking lot	2
571	Quercus rubra	Red Oak	89	10	Good		Remove	South west corner of existing building	5
572	Tilia cordata	Little Leaf Linden	40	6	Good	Trunk is leaning slightly south	Preserve	South of existing building	3
573	Tilia cordata	Little Leaf Linden	37	6	Poor	Canopy sparse. Root flare severely injured by lawn care equipment.	Preserve	Main entrance to existing building	3
574	Tilia cordata	Little Leaf Linden	32	6	Good	Canopy health is good. Tree is leaning South east.	Preserve	South of existing building	3
575	Tilia cordata	Little Leaf Linden	38	6	Fair	Canopy sparse. Leaning south east. Surface root damage.	Preserve	South of existing building	3
576	Tilia cordata	Little Leaf Linden	39	6	Poor	Canopy decline. Heartwood decay. Surface root damage.	Preserve	South of existing building	3
577	Quercus rubra	Red Oak	61	10	Fair	Tree topped. Branch dieback observed at top of canopy.	Preserve	South east corner	5
578	Quercus rubra	Red Oak	80	10	Good		Preserve	South east corner	5
579	Acer saccharum	Sugar Maple	39	12	Good	Canopy lopsided. Favouring east side of trunk.	Preserve	South east corner	6
580	Quercus rubra	Red Oak	68	12	Good		Preserve	South east corner	6
581	Juniperus virginiana	Eastern Red Cedar	21	4	Good		Preserve	Front garden	2



2 Tree Protection Hoarding Detail



Legend

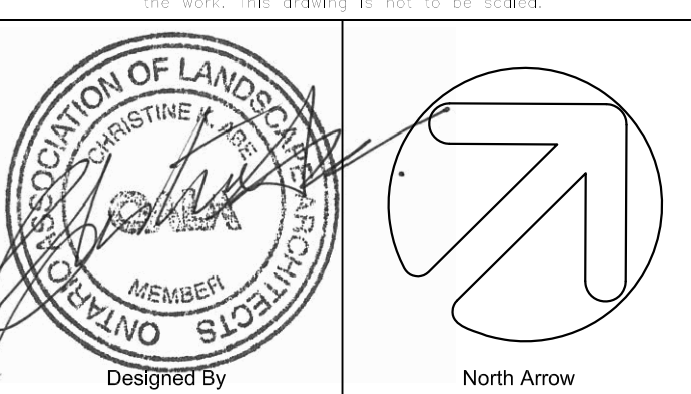


STANLEY LUK - ISA# ON-0994

1.0	11.06.2017	ISSUED FOR RE-ZONING APPLICATION	GM
-----	------------	----------------------------------	----

No	Date	Revisions	By

This drawing, as an instrument of service, is provided to you, and is the property of the MBTW Group. The contractor shall check and verify all dimensions and report all errors and omissions to the Landscape Architect whose seal is affixed to this drawing, before proceeding with the work. This drawing is not to be scaled.



the mbtw group
 235 Wickham Ave., Unit 14 | Toronto, Ontario, Canada M4M 1S8
 T: (416) 449-7767 | F: (416) 449-1803 | www.mbtw.com

Project Name:
1315 Silver Spear Road
 Starlight Investments
 City of Mississauga

Sheet Title:
Tree Protection Plan

Designed: GM	Drawn: DI	Scale: 1:250	Drawing No.:
Date of Drawing: August 2017	Job No.:	SIS001	TP-2

NOTE:
 This drawing, as an instrument of service, is provided by The MBTW Group. The contractor shall check and verify all dimensions and report all errors and omissions, to the Landscape Architect whose seal is affixed to this drawing, before proceeding with the work. This drawing is not to be scaled. All dimensions are in millimeters unless otherwise noted. Stake out all utilities prior to commencing work.