

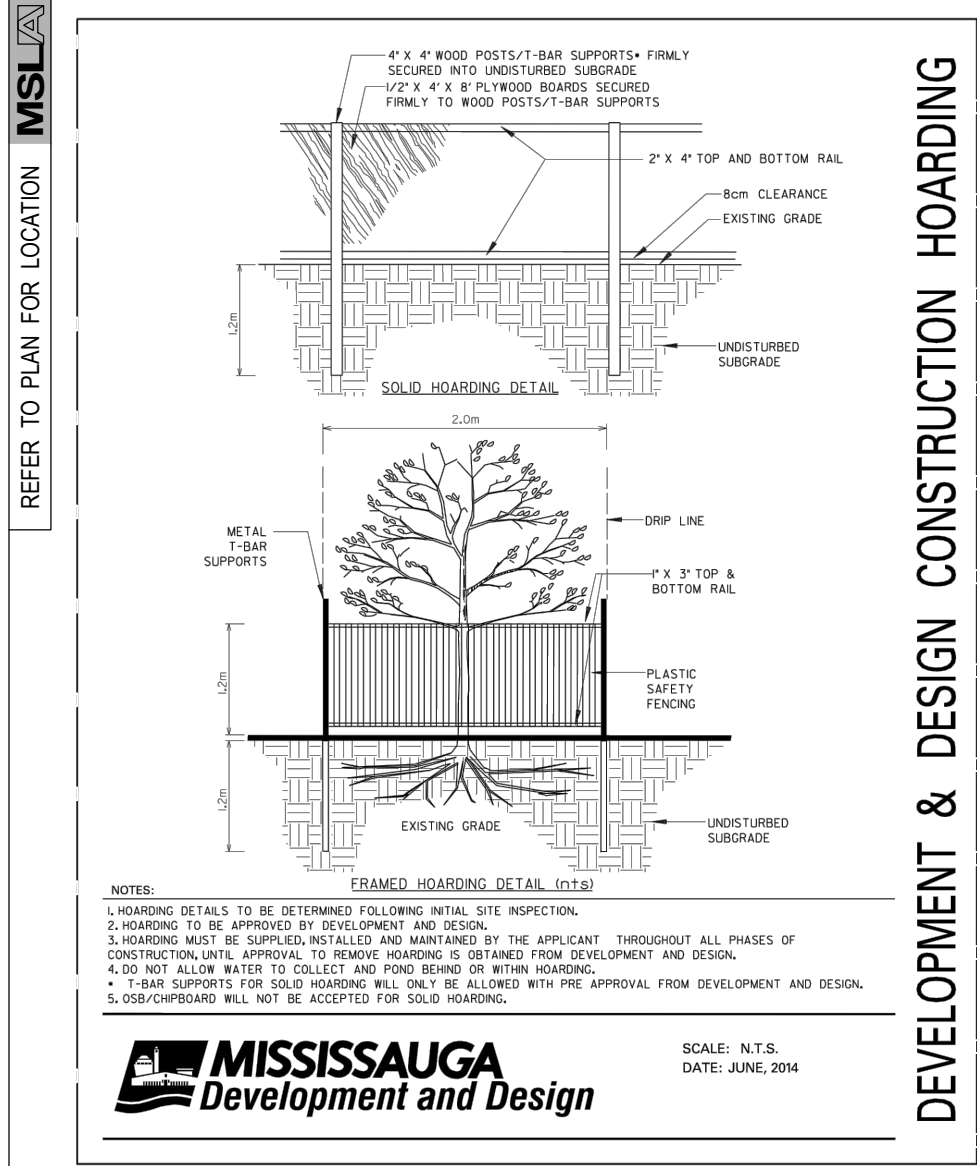
Legend

- Property Line
- Tree Protection Zone
- Existing Deciduous Tree to Remain
- Existing Deciduous Tree to be Removed
- Detail Reference Key
- Existing Tree Reference Key

Existing Tree Schedule

Table #1. Tree number (No.), species, diameter at breast height (DBH), Condition Rating (CR) Tree Category (TC) and comments.

No.	Tree Species	DBH (cm)	CR (%)	TC	Location	Comments
#1	Manitoba Maple	6-8	65	Neighbour	NE near fence	To be Preserved
#2	Siberian Spruce	19	70	Neighbour	E near fence	To be Preserved
#3	Siberian Spruce	18	70	Neighbour	E offsite	To be Preserved
#4	Siberian Spruce	16	70	Neighbour	E offsite	To be Preserved
#5	Siberian Spruce	15	70	Neighbour	E offsite	To be Preserved
#6	Siberian Spruce	11	55	Neighbour	E offsite	To be Preserved
#7	Siberian Spruce	6	60	Neighbour	E offsite	To be Preserved
#8	Siberian Spruce	5	50	Neighbour	SE offsite	To be Preserved
#9	Little-leaf Linden	111	65	Neighbour	SE offsite	To be Preserved
#10	Little-leaf Linden	13	70	Neighbour	SE offsite	To be Preserved
#11	Honey Locust	14	65	Neighbour	SE offsite	To be Preserved
#12	Honey Locust	15	70	Neighbour	SE offsite	To be Preserved
#13	Honey Locust	10	65	Neighbour	S offsite	To be Preserved
#14	Siberian Spruce	10	70	Neighbour	S offsite	To be Preserved
#15	Little-leaf Linden	15	65	Neighbour	S offsite	To be Preserved
#16	Little-leaf Linden	16	65	Neighbour	S offsite	To be Preserved
#17	Little-leaf Linden	14	70	Neighbour	S offsite	To be Preserved
#18	White Spruce	7	65	Neighbour	S offsite	To be Preserved
#19	Blue Spruce	8	60	Neighbour	S offsite	To be Preserved
#20	White Spruce	8	65	Neighbour	S offsite	To be Preserved
#21	Freeman Maple	11	70	Neighbour	S offsite	To be Preserved
#22	White Spruce	7	65	Neighbour	S offsite	To be Preserved
#23	Blue Spruce	8	65	Neighbour	S offsite	To be Preserved
#24	White Spruce	6	60	Neighbour	S offsite	To be Preserved
#25	NA (Stump)	NA	0	Neighbour	SW offsite	To be Preserved
#26	Freeman Maple	18	65	Neighbour	SW offsite	To be Preserved
#27	Freeman Maple	18	70	Neighbour	SW offsite	To be Preserved
#28	Little-leaf Linden	15	65	Neighbour	SW offsite	To be Preserved
#29	Little-leaf Linden	12	65	Neighbour	SW offsite	To be Preserved
#30	White Spruce	9	65	Neighbour	SW offsite	To be Preserved

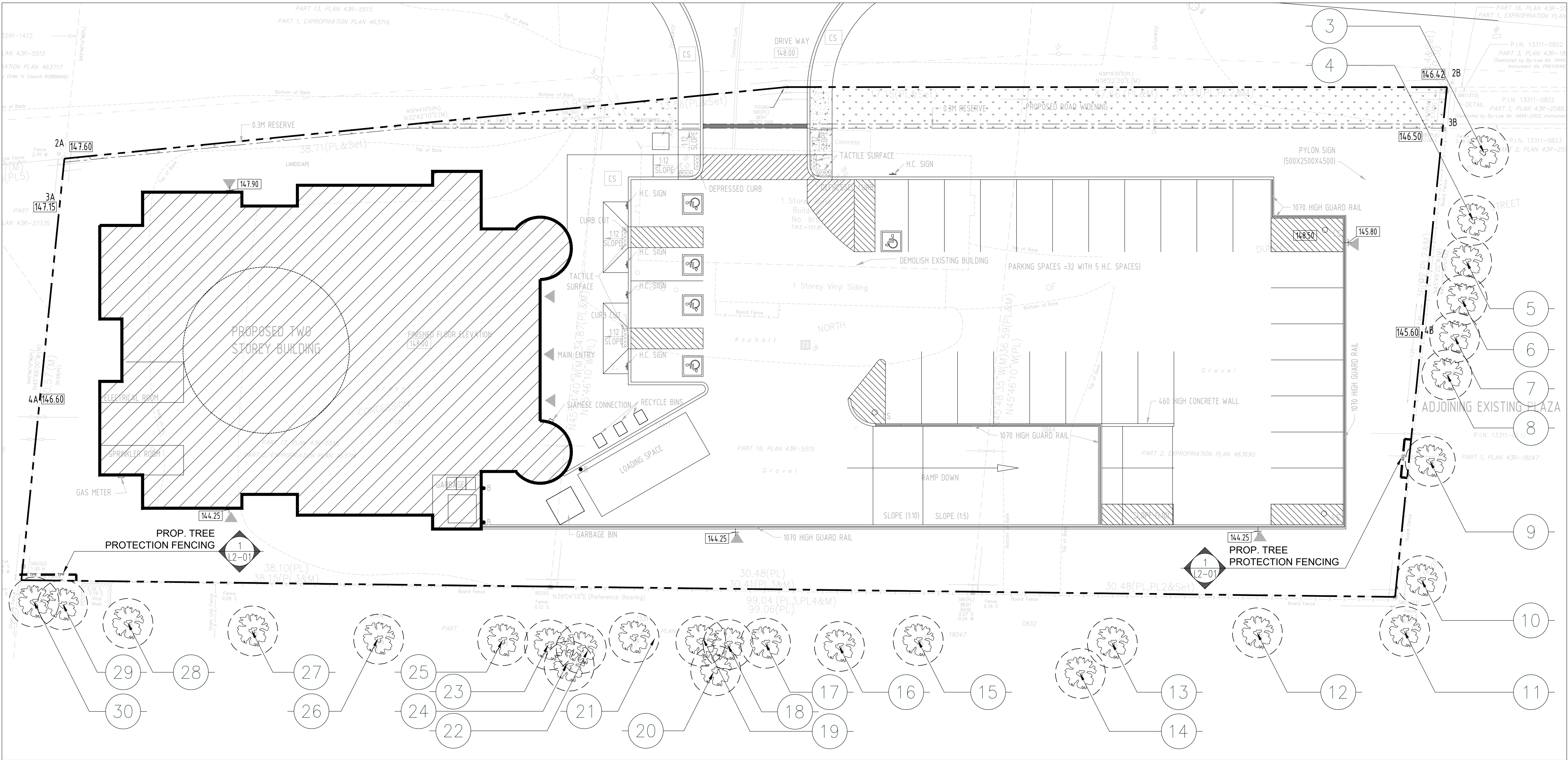
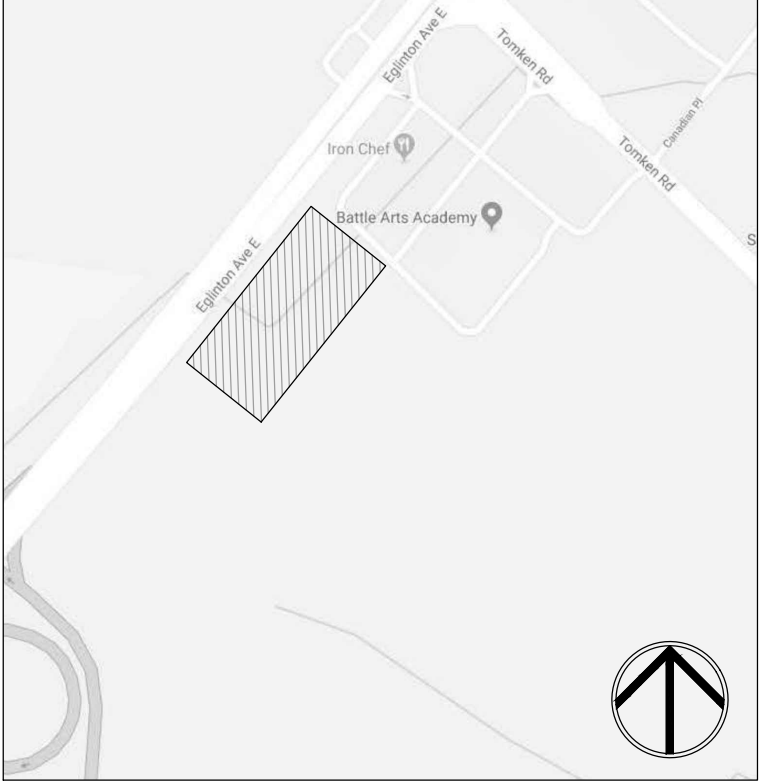


TREE PROTECTION BARRIERS DETAIL TYP.

SCALE: N.T.S.

1/201

Key Map



**msla**  
MARTON SMITH LANDSCAPE ARCHITECTS  
170 The Donway W Suite 206,  
Toronto, Ontario, Canada, M3C 2G3  
tel. 416.492.9966 | email: info@msla.ca

Architect:  
**ANTRIX**  
ARCHITECTS INC.  
1109 BRITANNIA RD. E., MISSISSAUGA  
ON L4W 3X1, PHONE 905 564 1154  
FAX 888 501 0265

Client/Owner:

Municipality:  
**MISSISSAUGA**

Notes:

03	Issued for Submission	02/06/19
02	Issued for Review	01/18/19
01	Issued for Review	11/08/18
No.	Revision	Date

North: Stamp:

Project:  
**Proposed Place of Worship**  
900 Eglinton Ave W.  
Mississauga, Ontario

Scale: **1:150** Date: **Nov 2018**

Drawn By: **S.P.** Checked By: **L.M.**

Drawing Title:

**Tree Preservation Plan**

Project No. **18195** Sheet No. **L2-01**

All information contained in these plans shall be checked by the contractor. All discrepancies shall be reported to the Landscape Architect (L.A.) before commencing with construction. All drawings have copyright and shall remain the property of the Landscape Architect. Copying or any reproduction in part or whole shall only be permitted with written consent of L.A. Drawings shall not be used for construction unless sealed & SIGNED. NOTE: FOR ANY AND ALL GRADING INFORMATION REFER TO SITE GRADING ENGINEERING DRAWINGS. NO SLOPES ARE TO EXCEED 3:1. PROPERTY LINES AND SETBACKS MUST BE CONFIRMED BY CONTRACTOR PRIOR TO CONSTRUCTION. ANY AND ALL RETAINING WALLS MUST BE APPROVED BY STRUCTURAL ENGINEER PRIOR TO CONSTRUCTION. ANY AND ALL RETAINING WALLS MUST BE APPROVED BY STRUCTURAL ENGINEER PRIOR TO CONSTRUCTION. DO NOT SCALE DRAWINGS. PRELIMINARY NOT FOR CONSTRUCTION. THESE DRAWINGS ARE NOT TO BE USED FOR CONSTRUCTION UNTIL COUNTERSIGNED BY L.A. ARCHITECT. SIGNED DATE