



flanagan
beresford
& patteson
architects



70 silton road, unit # 01, woodbridge,
ontario, l4l 8b9, (905) 265-2688

CITY PARK HOMES

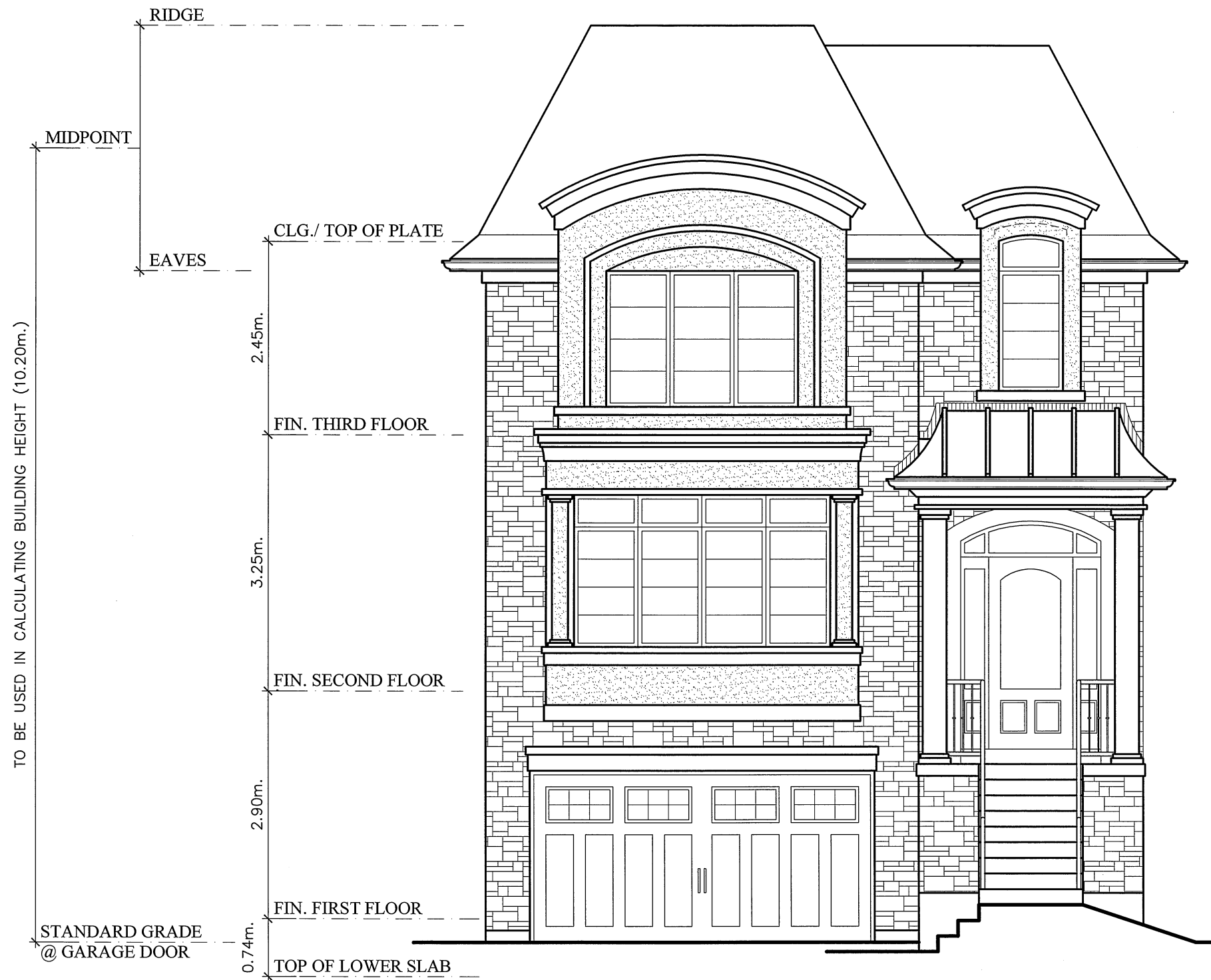
PROPOSED RESIDENTIAL DEVELOPMENT

WEALTHY PLACE & PRIMATE ROAD, MISSISSAUGA, ONTARIO

16-1353

3/16"=1'0"

JUNE 07 2017



FRONT ELEVATION 8.35m MODEL

flanagan
beresford
& patteson
architects



70 silton road, unit # 01, woodbridge,
ontario, l4l 8b9, (905) 265-2688

CITY PARK HOMES

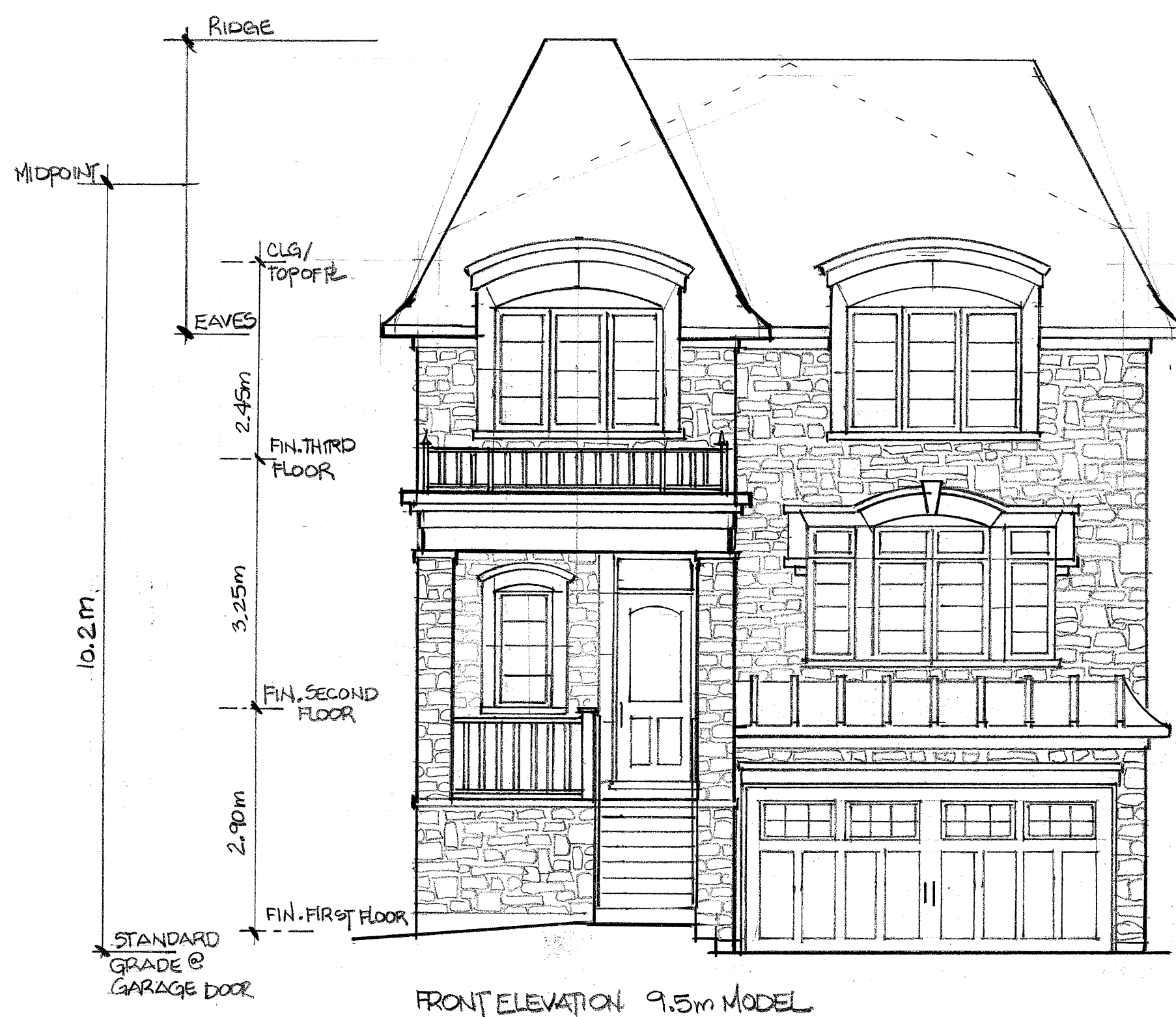
PROPOSED RESIDENTIAL DEVELOPMENT

WEALTHY PLACE & PRIMATE ROAD, MISSISSAUGA, ONTARIO

16-1353

3/16"=1'0"

JUNE 07 2017



flanagan
 beresford
 & patteson
 architects



70 silton road, unit # 01, woodbridge,
 ontario, l4l 8b9, (905) 265-2688

CITY PARK HOMES

PROPOSED RESIDENTIAL DEVELOPMENT

WEALTHY PLACE & PRIMATE ROAD, MISSISSAUGA, ONTARIO

16-1353

3/16"=1'0"

JUNE 07 2017