

ISSUED FOR

- 2018-08-31 ISSUED FOR OPA / ZBL
- 2019-01-18 131 EGLINTON AVE E LANDS ADDED
- 2019-05-31 OPA / ZBL UPDATES

METRIC

THIS DRAWING IS COPYRIGHTED AND MUST NOT BE USED, REPRODUCED, OR REWARDED WITHOUT WRITTEN PERMISSION.

ALL DIMENSIONS ARE IN MILLIMETERS UNLESS OTHERWISE NOTED. DIMENSIONS ARE TO FACE UNLESS OTHERWISE NOTED. DO NOT SCALE THIS DRAWING.

REPORT ACCURACIES AND DIMENSIONS TO THE CONSULTANT FOR CLARIFICATION BEFORE COMMENCING WITH THE WORK.

DEVIATIONS FROM THE CONTRACT DOCUMENTS WITHOUT WRITTEN APPROVAL FROM THE CONSULTANT ARE SUBJECT TO CORRECTION AT THE CONTRACTOR'S EXPENSE.

ARCHITECT

DIALOG
1100 2 BLOOR ST. E.
TORONTO, ON M4W 1A8
TEL: (416) 966-0220 WEBSITE: dialogdesign.ca

URBAN PLANNER

GLEN SCHWARR, ASSOCIATE INC.
10 KINGSBRIDGE GARDEN CIRCLE SUITE 200
MISSISSAUGA, ON L5R 3K6
TEL: (416) 638-4911 WEBSITE: gscil.ca

LANDSCAPE ARCHITECT

TERRAPLAN LANDSCAPE ARCHITECT
20 CHAMPLAIN BLVD. SUITE 102
TORONTO, ON M5H 2T1
TEL: (416) 438-4911 WEBSITE: terraplan.ca

TRAFFIC CONSULTANT

WSP
100 COMMERCE VALLEY DRIVE WEST
THORNHILL, ON L3T 0A1
TEL: (905) 881-4211 WEBSITE: wsp.com

CIVIL ENGINEER

C.F. CROZIER & ASSOCIATES
2800 HIGH POINT DRIVE, SUITE 100
MILTON, ON L9T 6P4
TEL: (905) 875-0026 WEBSITE: cfcozier.ca

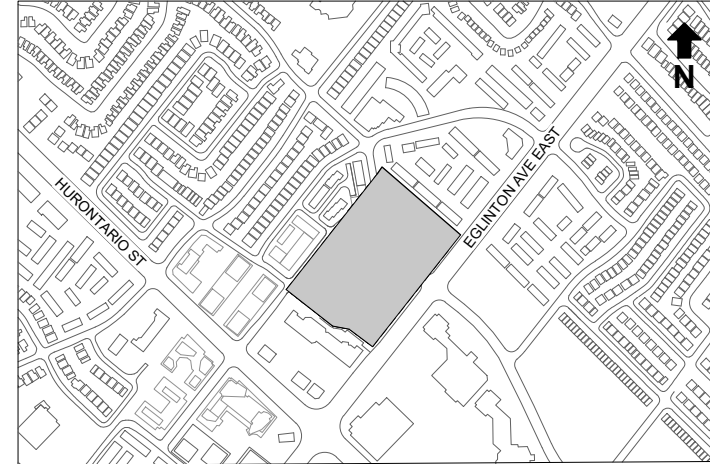
WIND CONSULTANT

THEAKSTON ENVIRONMENTAL
596 GLENGARRY CR., P.O. BOX 390
FERGUS, ONTARIO, N1M 3Z1
TEL: (519) 781-2910 WEBSITE: theakston.com

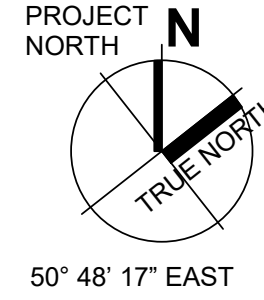
ACOUSTIC CONSULTANT

JADE ACOUSTICS
411 CONFEDERATION PARKWAY UNIT 19
CONCORD, ON L4K 0A8
TEL: (905) 460-2444 WEBSITE: jadecooustics.com

KEYPLAN



SEAL



91 EGLINTON Ave E MASTER PLAN

91 EGLINTON Ave E
MISSISSAUGA, ON L4E 1B2

SITE/ CONCEPT PLAN

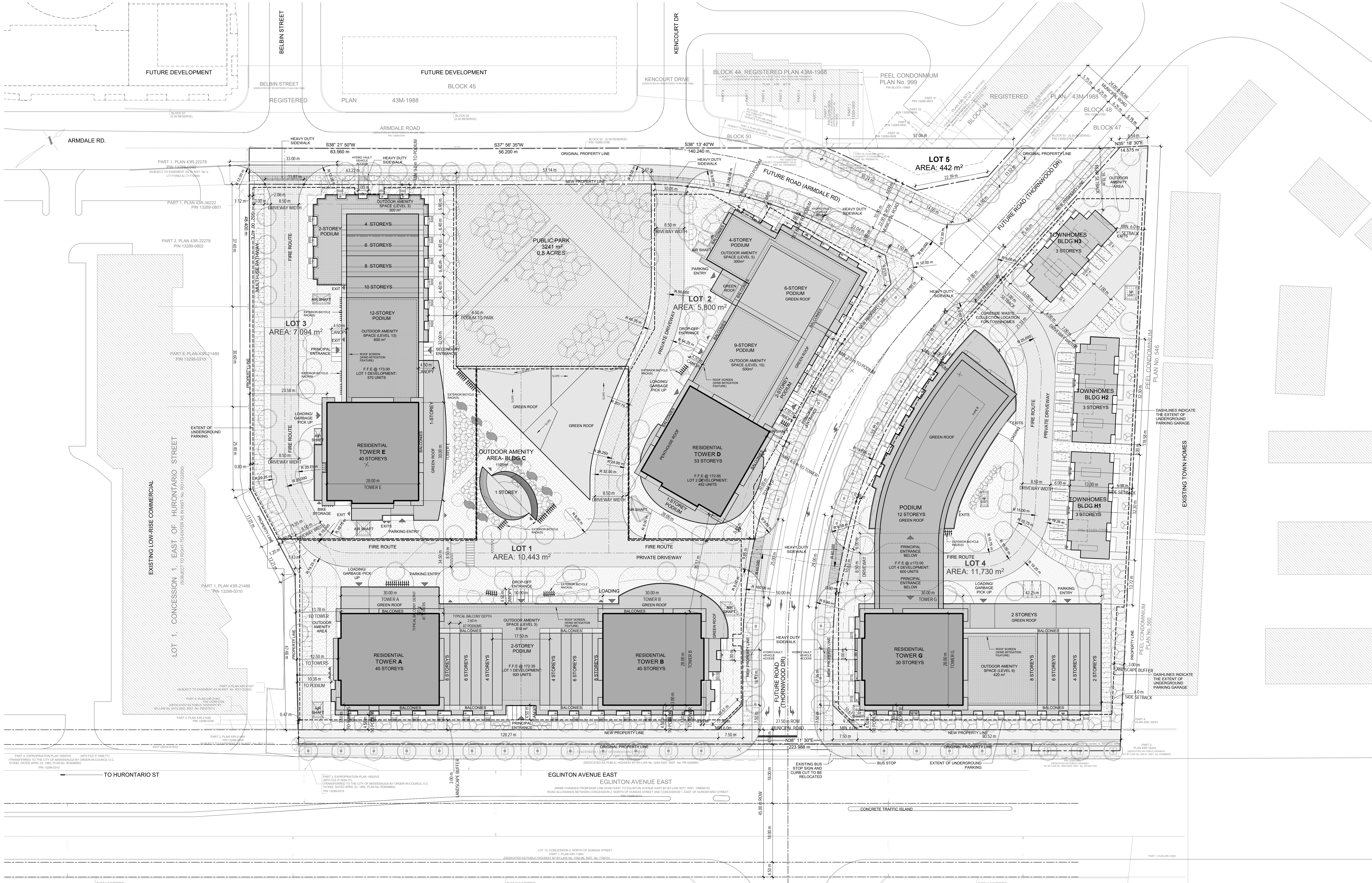
DRAWN: AP
PLOT DATE: 2019-05-31 10:21:05 AM

CHECKED: FW

RZ-01b

11153T0100

C:\RevisedLocal\Fw\DWG_11153T0100_AP_91 EGLINTON Ave E.dwg (1)



SURVEY NOTES:
SURVEY COMPLETED BY KRCMAR SURVEYORS LTD.
DATED AUGUST 4, 2017
DRAWING 11-153T01 (NO. 91 EGLINTON AVENUE EAST,
MISSISSAUGA)
1137 CENTRE STREET THORNHILL ON L4J 3M6 905.738.0053
P. 905.738.9221 WWW.KRCMAR.CA

SCHAEFFER DZALDOV BENNETT LTD. DATED JUNE 8, 2018,
JOB NO. 17-450-02 (PART 3, PLAN 43R-22278)
COMPOSITE SKETCH PREPARED BY SCHAEFFER DZALDOV
BENNETT LTD. DATED FEBRUARY 15, 2018. JOB NO. 17-450-01
64 JARON DRIVE, CONCORD, ONTARIO L4K 3P5 TEL: (416) 987-2011

GRADING PLAN
PRELIMINARY OVERALL GRADING PLAN
COMPLETED BY CROZIER & ASSOCIATES
DRAWING FIG 6 DATED AUGUST 28, 2018

LANDSCAPE PLAN
LANDSCAPE PLAN PREPARED BY TERRAPLAN
DATED 2018-08-31 DRAWING LS-100

0m 8m 16m 24m 32m 40m

SCALE 1:400

CONCEPT/SITE PLAN
SCALE 1: 400