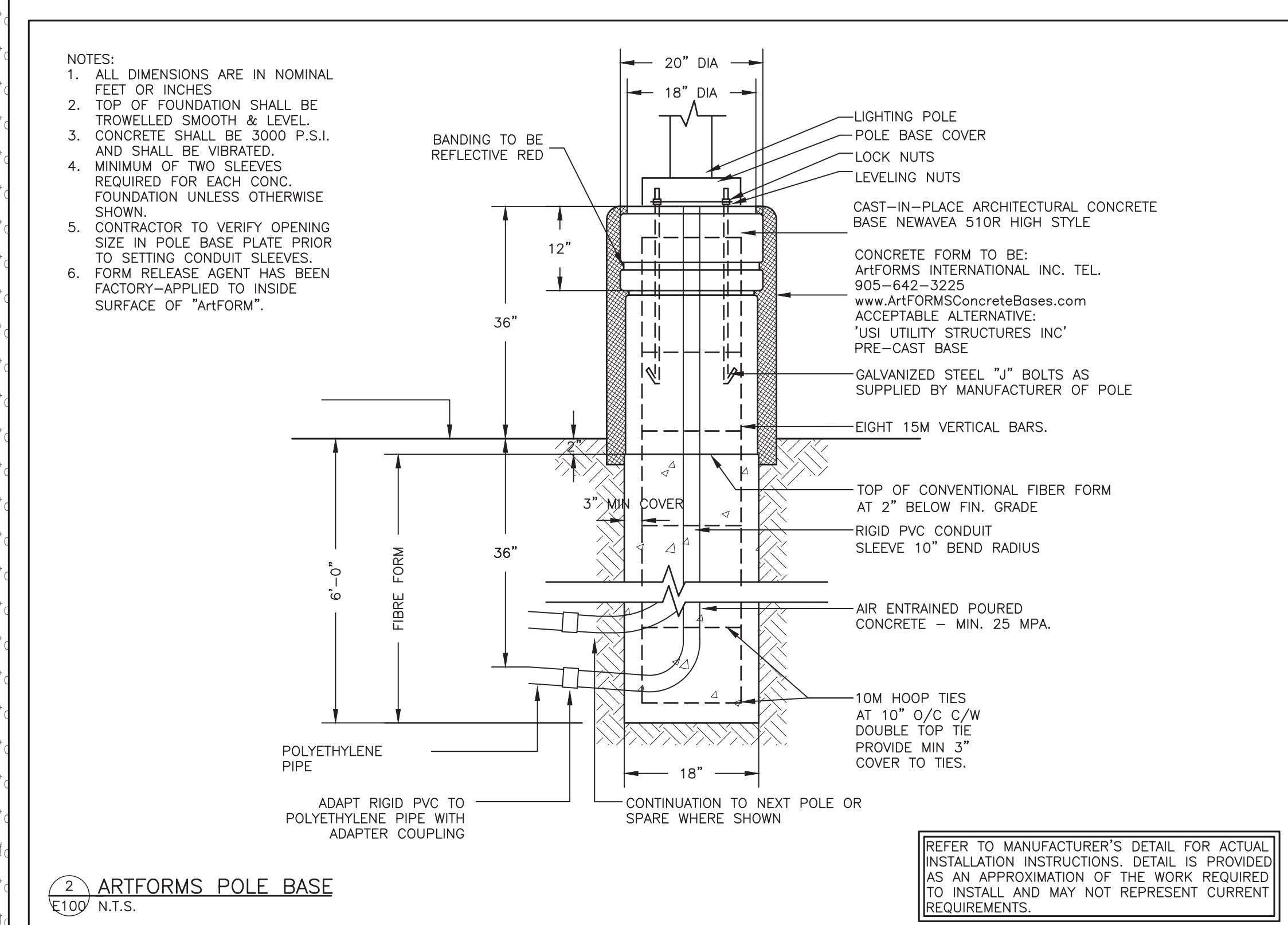


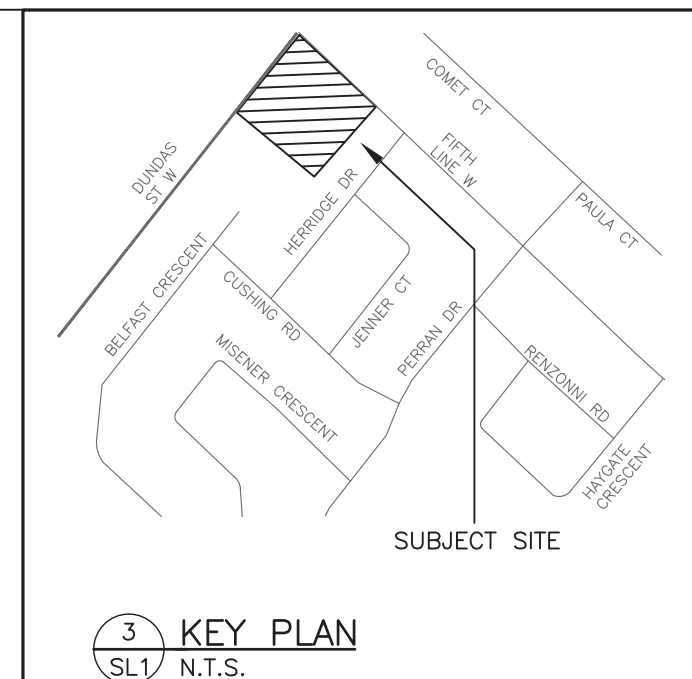
### ELECTRICAL LEGEND

	LIGHT FIXTURE ( z = TYPE AS PER SCHEDULE )
	WALL MOUNTED LIGHT FIXTURE ( z = TYPE AS PER SCHEDULE )
	POLE LIGHT FIXTURE ( z = TYPE AS PER SCHEDULE )

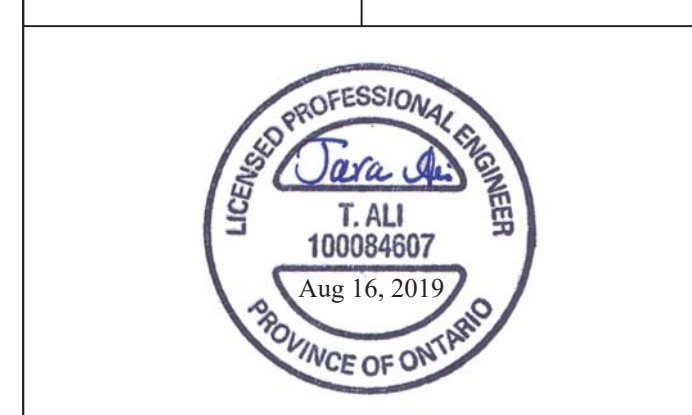
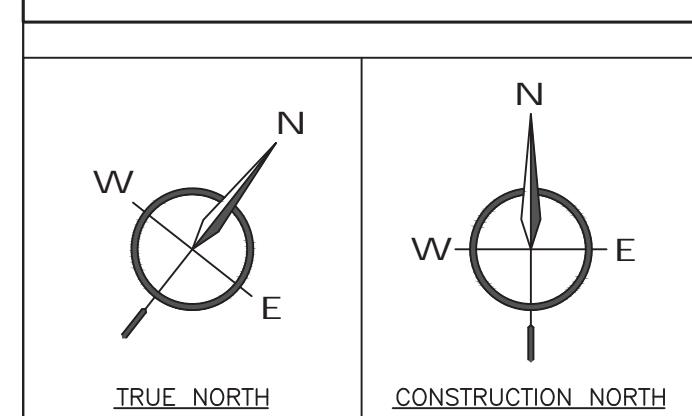


### LUMINAIRE SCHEDULE

TYPE	ACCEPTABLE MANUFACTURERS	MODELS	CATALOGUE NUMBERS	DESCRIPTION NUM. OF LAMPS VOLTAGE	LOCATION MOUNTING HEIGHT	NOTES
AA	EXISTING	URBANSCAPE	MPTC-30W16LED4K-T-LE3W-120-PH6-BKTX	POST TOP 38W LED 120V	GENERAL POST TOP 15' A.F.G.	12" STRAIGHT ROUND STEEL 4" DIAMETER POLE + 3" BASE WITH OWNER TO CONFIRM FINISH PRIOR TO ORDERING.
BB	EXISTING	106L	106L-32L-530-NW-G1-4-	WALL PACK 52W LED 120V	BUILDING WALL 15' A.F.G.	OWNER TO CONFIRM FINISH PRIOR TO ORDERING.
CC	PHILIPS LIGHTING	106L	106L-16L-530-NW-G1-4-	WALL PACK 28W LED 120V	BUILDING WALL 15' A.F.G.	OWNER TO CONFIRM FINISH PRIOR TO ORDERING.
DD	EXISTING	LYTEPROFILE	FRAME: P6R.D.15.N.210.U.V.B ENGINE: P6R.D.80.40.V.B REFLECTOR: P6R.D.C.C.F	6" DOWNLIGHT 15.7W LED 120V	ENTRANCE RECESSED CANOPY	RECESS LIGHTING INTO CANOPY OVERHANG. FIXTURE IS WET LOCATION LISTED.
FF	GARCO LIGHTING	111L	111L-16L-350-NW-G2-3	MINI TRAPEZOID 18W LED 120V	BUILDING WALL SEE DWG.	12" x 5 11/32" LED MINI TRAPEZOID, CONFIRM FINISH WITH OWNER PRIOR TO ORDERING FIXTURES.
GG	LIGHTOLIER	S7R	S7R8 30K 10 WHITE WET LOCATION LISTED	SURFACE ROUND 13W LED 120V	CANOPY SURFACE 3.25m A.F.G.	7" SLIM SURFACE LED ROUND FIXTURE, CONFIRM FINISH WITH OWNER PRIOR TO ORDERING FIXTURES.
HH	GARCO	SVPG	SVPG 140L 800 NW G2 3 UNV	SOFTVIEW 37W LED 120V	DRIVE THRU SURFACE 5.4m A.F.G.	19.24" DIAMETER SURFACE SOFTVIEW CANOPY LIGHT.
JJ	PHILIPS	MPTC	MPTC 30W 16LED 4K T LE3 HS	URBAN POST TOP 18W LED 120V	GENERAL POST TOP 15' A.F.G.	12" STRAIGHT ROUND STEEL 4" DIAMETER POLE + A 3" BASE WITH OWNER TO CONFIRM FINISH PRIOR TO ORDERING FIXTURES.
KK	PHILIPS	MPTC	MPTC 16W 16LED 4K T LE4 HS	URBAN POST TOP 38W LED 120V	GENERAL POST TOP 15' A.F.G.	12" STRAIGHT ROUND STEEL 4" DIAMETER POLE + A 3" BASE WITH OWNER TO CONFIRM FINISH PRIOR TO ORDERING FIXTURES.
LL	NORA LIGHTING	NYLO	NYLO 6W 12 1 40 WW B BLACK, WET LISTED	CYLINDER 17W LED 120V	ENTRANCE WALL 5.5m A.F.G.	6" x 14" WET LISTED WALL MOUNTED CYLINDER. CONFIRM FINISH PRIOR TO ORDERING FIXTURES.



- ### SITE LIGHTING NOTES:
- THIS DRAWING IS FOR FIXTURE LOCATIONS AND PHOTOMETRIC LAYOUT OF SITE LIGHTING ONLY. CONTACT ELECTRICAL CONSULTANT FOR BUILDING ELECTRICAL SITE PLAN TO CONFIRM LAYOUT OF CONDUIT ROUTING, CIRCUIT ARRANGEMENT, AND WIRE SIZING.
  - VOLTAGES OF FIXTURES ARE TO BE VERIFIED WITH THE ELECTRICAL SITE PLANS PRIOR TO ORDERING FIXTURES.
  - ELEVATIONS OF BASES ARE TO BE COORDINATED WITH SITE GRADING PLAN.
  - LIGHT STANDARDS ARE TO BE COORDINATED WITH WINDOW LOCATIONS. ANY FIXTURES WITHIN 10' (3m) OF THE BUILDING OR ANY CHANGES MADE TO THE BUILDING ENVELOPE ARE TO BE BROUGHT TO THE ATTENTION OF THE SITE LIGHTING CONSULTANT OR PROJECT MANAGER.
  - SUBSTITUTIONS OF LIGHT FIXTURES ARE NOT PERMITTED. IF THE CONTRACTOR SUBSTITUTES LIGHTING FIXTURES THE CONTRACTOR SHALL CARRY ALL COSTS TO HAVE PHOTOMETRIC CALCULATIONS DONE BY THE OFFICE OF THE SITE LIGHTING CONSULTANT AND ALL COSTS ASSOCIATED WITH SITE PLAN RE-SUBMISSION TO THE CITY.
  - PHOTOMETRICS SHOWN CONSIDER ALL FACTORS AFFECTING LIGHT OUTPUT LEVELS SUCH AS LAMP AND BALLAST DEPRECIATION AND DIRT ACCUMULATION OVER AN ESTIMATED ONE-YEAR PERIOD.
  - PHOTOMETRIC VALUES ARE SHOWN IN FOOTCANDLES(fc).
  - ALL EXTERIOR LIGHTING POLES ARE TO BE GALVANIZED TO PREVENT CORROSION.
  - ALL EXTERIOR LIGHTING IS FULL CUTOFF AND WILL BE DIRECTED ONTO THE SITE AND WILL NOT INFRINGE UPON THE ADJACENT PROPERTIES.



8		
7		
6		
5		
4		
3		
2	ISSUED FOR SITE PLAN APPROVAL	AUG. 08, 2019
1	ISSUED FOR REVIEW	DEC 14, 2016
No	REVISION	DATE



PROJECT TITLE:  
**ERINVIEW DEVELOPMENT**  
 2132 DUNDAS ST. W  
 2630 FIFTH LINE WEST  
 MISSISSAUGA, ONTARIO

DRAWING TITLE:  
**SITE LIGHTING PLAN PHASE#2**

PARCEL REGISTER PIN: 13425-0182  
 SITE LIGHTING REFERENCE # OP 17/01 W2

DRAWN BY: BE  
 CHECKED BY: TA  
 DATE: 2019.04.09  
 SCALE: AS NOTED

CUSTOMER PROJECT No. 15055  
 MIGHTON PROJECT No. 35051  
 DRAWING No. E100