

1. Copyright of this drawing is reserved by the Architect. The drawing and all associated documents are an instrument of service by the Architect. The drawing and the information contained therein may not be reproduced in whole or in part without prior written permission of the Architect.  
2. These Contract Documents are the property of the Architect. The Architect bears no responsibility for the interpretation of these documents by the Contractor. Upon written application, the Architect will provide written graphic clarification or supplementary information regarding the intent of the Contract Documents. The Architect will review Shop Drawings submitted by the Contractor for design conformance only.  
3. Drawings are not to be scaled for construction. The Contractor is to verify all existing conditions and dimensions required to perform the work and report any discrepancies with the Contract Documents to the Architect before commencing any work.  
4. Positions of specified finished mechanical or electrical devices, fittings, and fixtures are indicated on architectural drawings. The locations shown on the architectural drawings govern over the Mechanical and Electrical drawings. These items are shown as located unless noted to be located by the Architect.  
5. These drawings are not to be used for construction unless noted below as "Issued For Construction".  
6. All work is to be carried out in conformance with the Code and Bylaws of the authorities having jurisdiction.  
7. The Architect of these plans and specifications gives no warranty or representation to any party about the constructability of the buildings represented by them. All contractors or subcontractors must satisfy themselves when bidding and at all times ensure that they can properly construct the work represented by these plans.  
© TREVOR MCIVOR ARCHITECT INC. 2017

| Rev. ID | Issue Name                         | Change ID | Change Name | Date       |
|---------|------------------------------------|-----------|-------------|------------|
| 01      | Issued for Zoning By-Law Amendment |           |             | 2019-04-16 |

**TREVOR MCIVOR ARCHITECT INC**

**Architecture:**  
Trevor McIvor: trevor@trevormcivor.com  
Steve Choe: steve@trevormcivor.com

134 Peter St., #1301  
Toronto, ON M5A 4M2  
t: (416) 525 7772  
w: www.trevormcivor.com

|            |           |
|------------|-----------|
| Consultant | Architect |
|            |           |

**NOT FOR CONSTRUCTION**

**2476 & 2482 Confederation Pkwy.**  
Mississauga, ON

GROUND FLOOR PLAN

**A201**

Drawn: TB

1. Copyright of this drawing is reserved by the Architect. The drawing and all associated documents are an instrument of service by the Architect. The drawing and the information contained therein may not be reproduced in whole or in part without prior written permission of the Architect.

2. These Contract Documents are the property of the Architect. The Architect bears no responsibility for the interpretation of these documents by the Contractor. Upon written application, the Architect will provide written graphic clarification or supplementary information regarding the intent of the Contract Documents. The Architect will review Shop Drawings submitted by the Contractor for design conformance only.

3. Drawings are not to be scaled for construction. The Contractor is to verify all existing conditions and dimensions required to perform the work and report any discrepancies with the Contract Documents to the Architect before commencing any work.

4. Positions of specified finished mechanical or electrical devices, fittings, and fixtures are indicated on architectural drawings. The locations shown on the architectural drawings govern over the Mechanical and Electrical drawings. These items are shown as located unless noted to be located by the Architect.

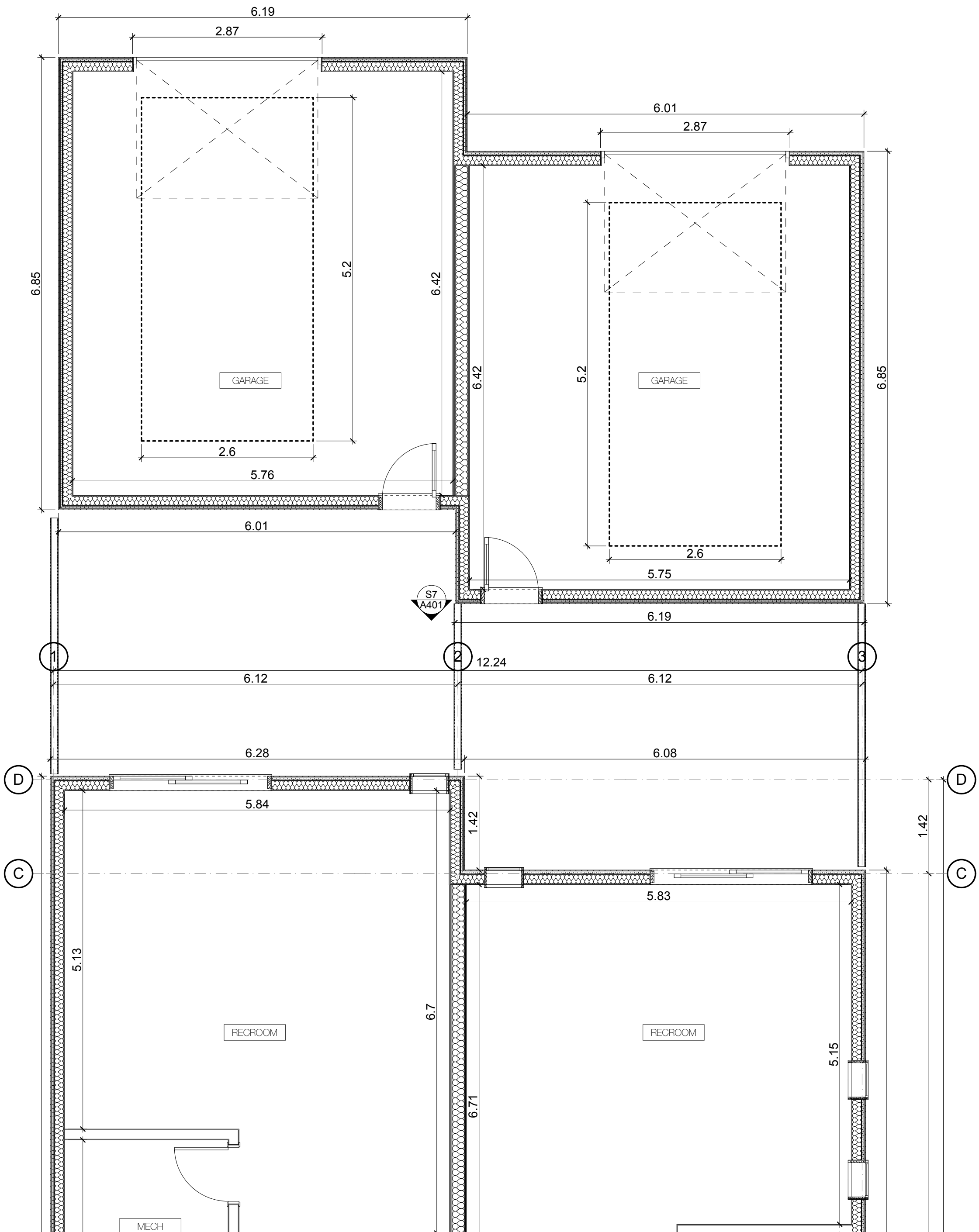
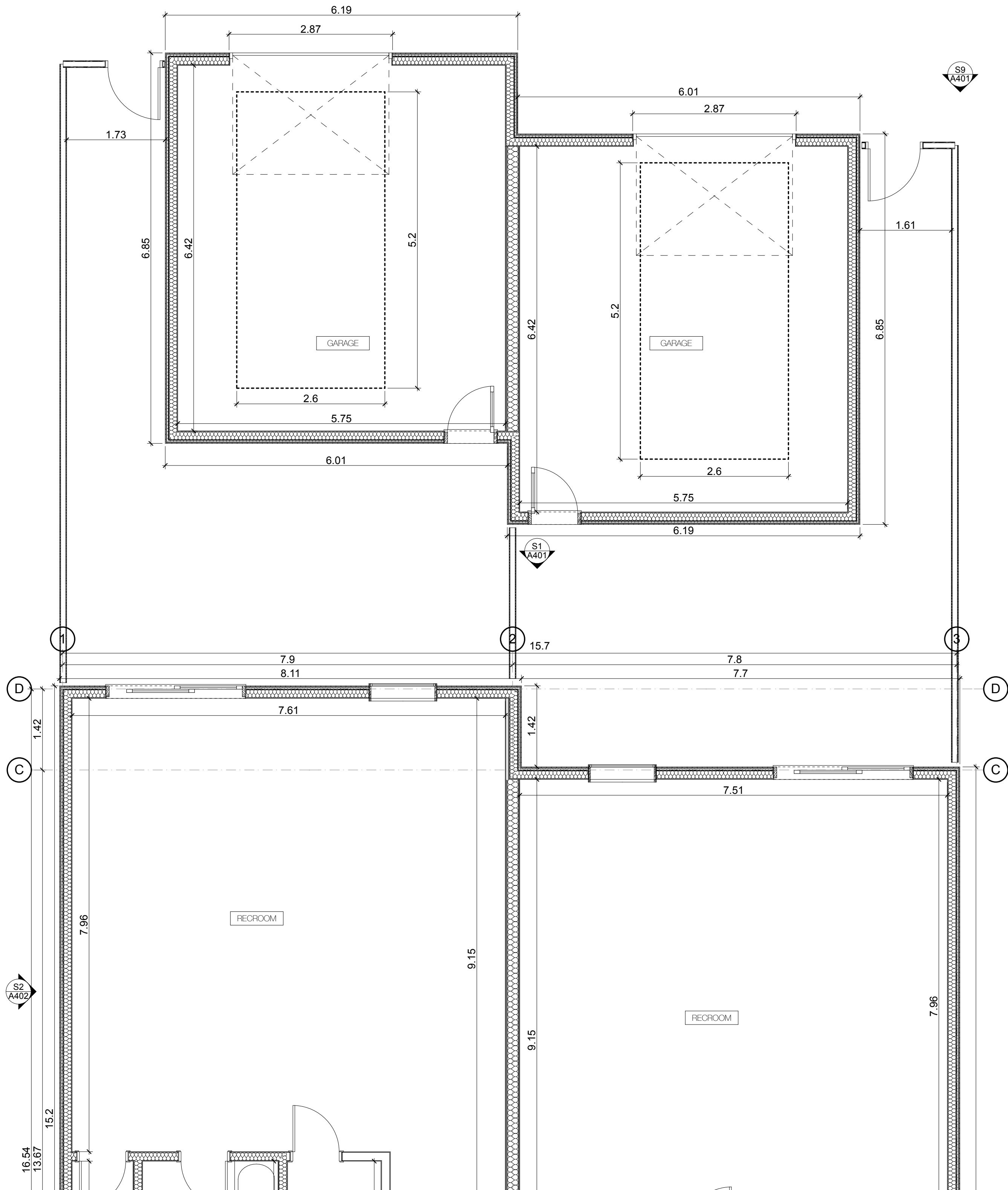
5. These drawings are not to be used for construction unless noted below as "Issued For Construction".

6. All work is to be carried out in conformance with the Code and Bylaws of the authorities having jurisdiction.

7. The Architect of these plans and specifications gives no warranty or representation to any party about the constructability of the buildings represented by them. All contractors or subcontractors must satisfy themselves when bidding and at all times ensure that they can properly construct the work represented by these plans.

© TREVOR MCIVOR ARCHITECT INC. 2017

| Rev. ID | Issue Name                         | Change ID | Change Name | Date       |
|---------|------------------------------------|-----------|-------------|------------|
| 01      | Issued for Zoning By-Law Amendment |           |             | 2019-06-16 |



1

## GROUND FLOOR - GARAGE PLANS

SCALE: 1:50

TREVOR MCIVOR ARCHITECT INC

### Architecture:

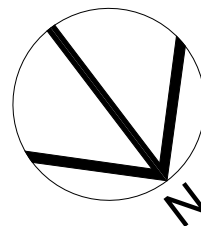
Trevor McIvor: trevor@trevormcivor.com  
Steve Choe: steve@trevormcivor.com

134 Peter St., #1301  
Toronto, ON M5A 4M2  
t: (416) 525 7772  
w: www.trevormcivor.com

Consultant Architect



NOT FOR  
CONSTRUCTION



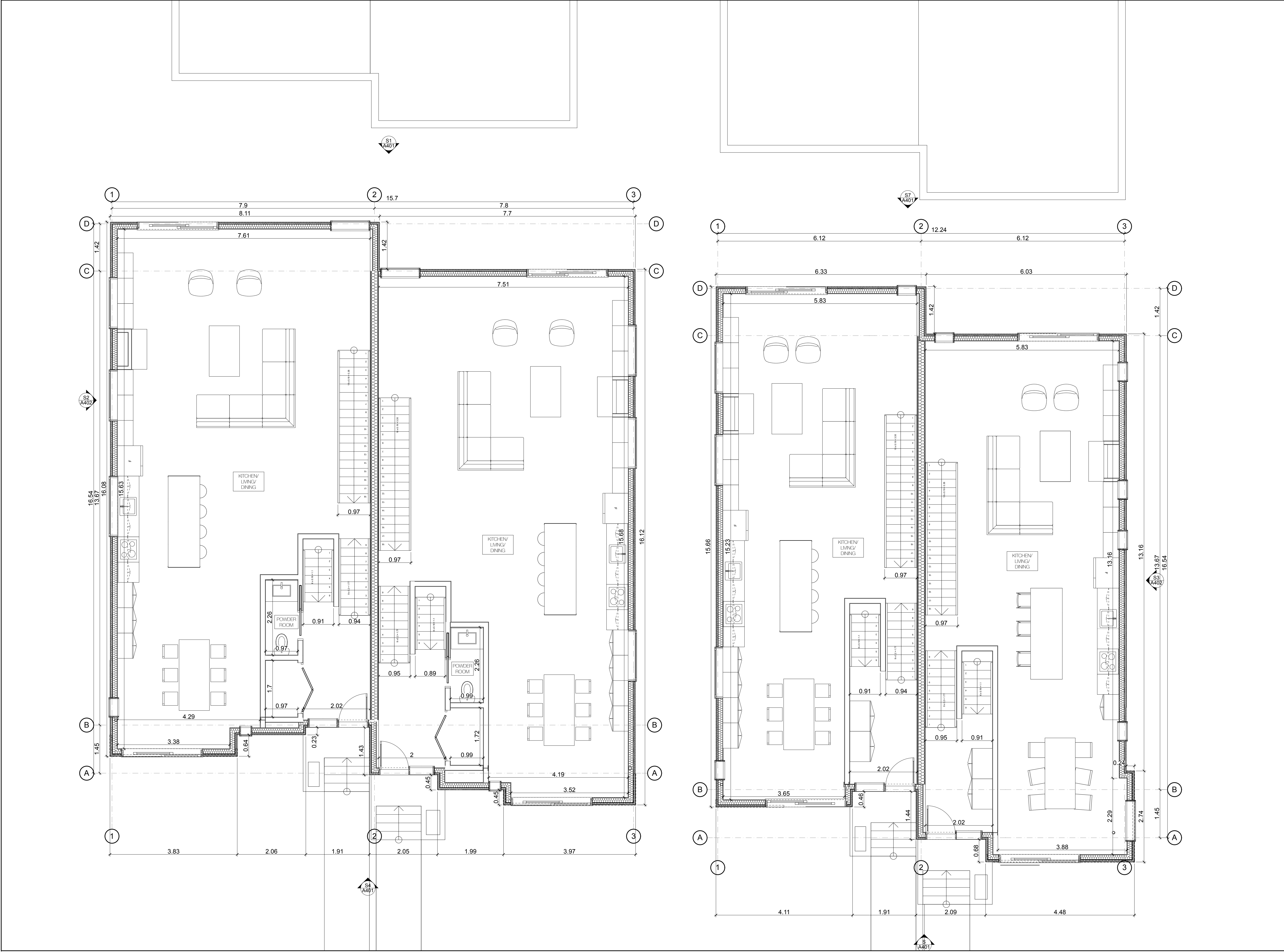
2476 & 2482 Confederation Pkwy.  
Mississauga, ON

GROUND FLOOR - GARAGE PLANS

# A201A

Drawn: TB





**1 SECOND FLOOR PLAN**  
SCALE: 1:50

1. Copyright of this drawing is reserved by the Architect. The drawing and all associated documents are an instrument of service by the Architect. The drawing and the information contained therein may not be reproduced in whole or in part without prior written permission of the Architect.

2. These Contract Documents are the property of the Architect. The Architect bears no responsibility for the interpretation of these documents by the Contractor. Upon written application, the Architect will provide written clarification or supplementary information regarding the intent of the Contract Documents. The Architect will review Shop Drawings submitted by the Contractor for design conformance only.

3. Drawings are not to be scaled for construction. The Contractor is to verify all existing conditions and dimensions required to perform the work and report any discrepancies with the Contract Documents to the Architect before commencing any work.

4. Positions of specified finished mechanical or electrical devices, fittings, and fixtures are indicated on architectural drawings. The locations shown on the architectural drawings govern over the Mechanical and Electrical drawings. These items are shown located as indicated by the Architect.

5. These drawings are not to be used for construction unless noted below as "Issued For Construction".

6. All work is to be carried out in conformance with the Code and Bylaws of the authorities having jurisdiction.

7. The Architect of these plans and specifications gives no warranty or representation to any party about the constructability of the buildings represented by them. All contractors or subcontractors must satisfy themselves when bidding and at all times ensure that they can properly construct the work represented by these plans.

© TREVOR MCIVOR ARCHITECT INC. 2017

| Rev. | ID | Issue Name                         | Change ID | Change Name | Date       |
|------|----|------------------------------------|-----------|-------------|------------|
| 01   |    | Issued for Zoning By-Law Amendment |           |             | 2019-06-16 |

**TREVOR MCIVOR ARCHITECT INC**

**Architecture:**  
Trevor McIvor: trevor@trevormcivor.com  
Steve Choe: steve@trevormcivor.com

134 Peter St., #1301  
Toronto, ON M5A 4M2  
t: (416) 525 7772  
w: www.trevormcivor.com

| Consultant | Architect   |
|------------|---|
|            |  |

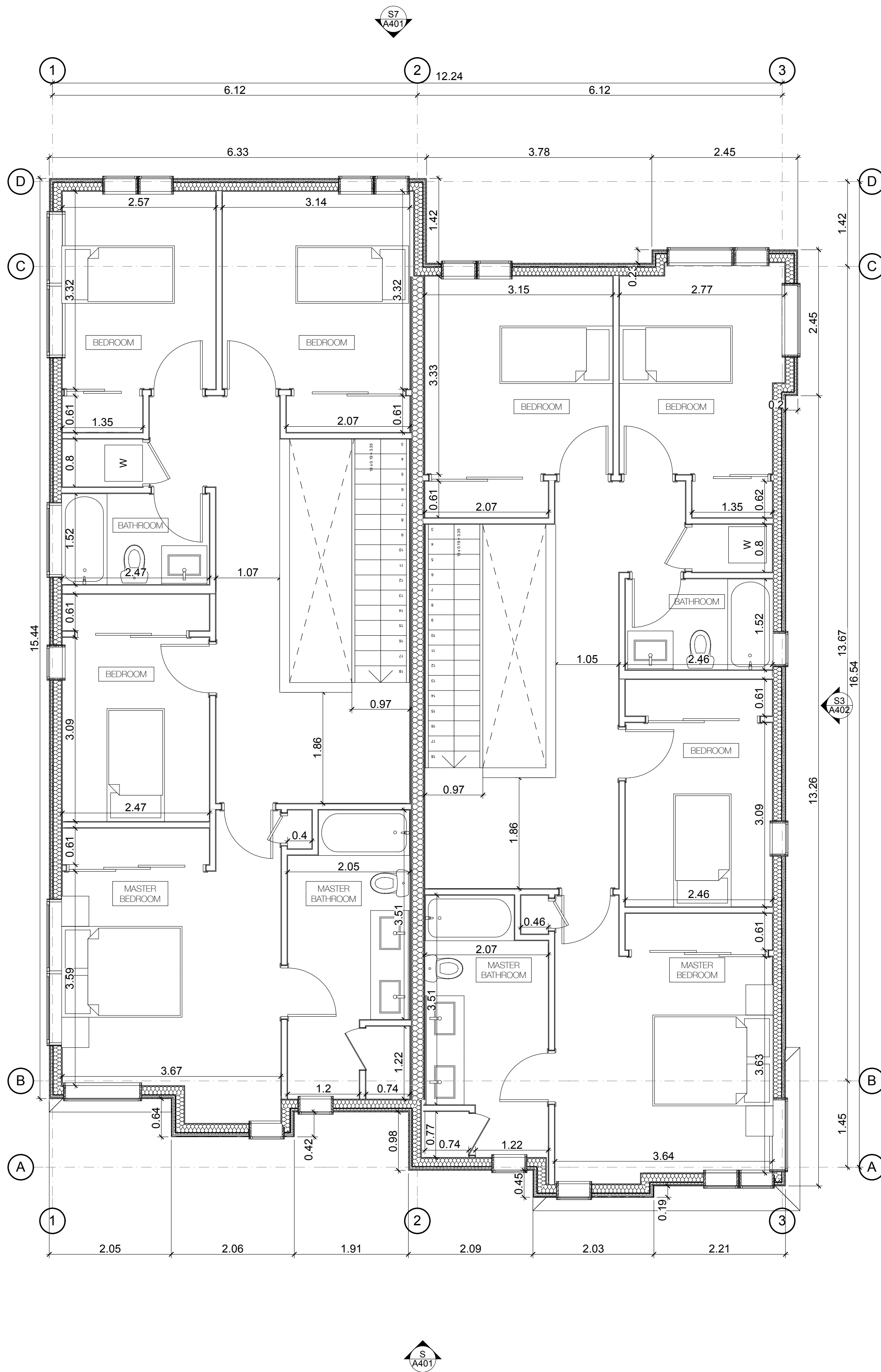
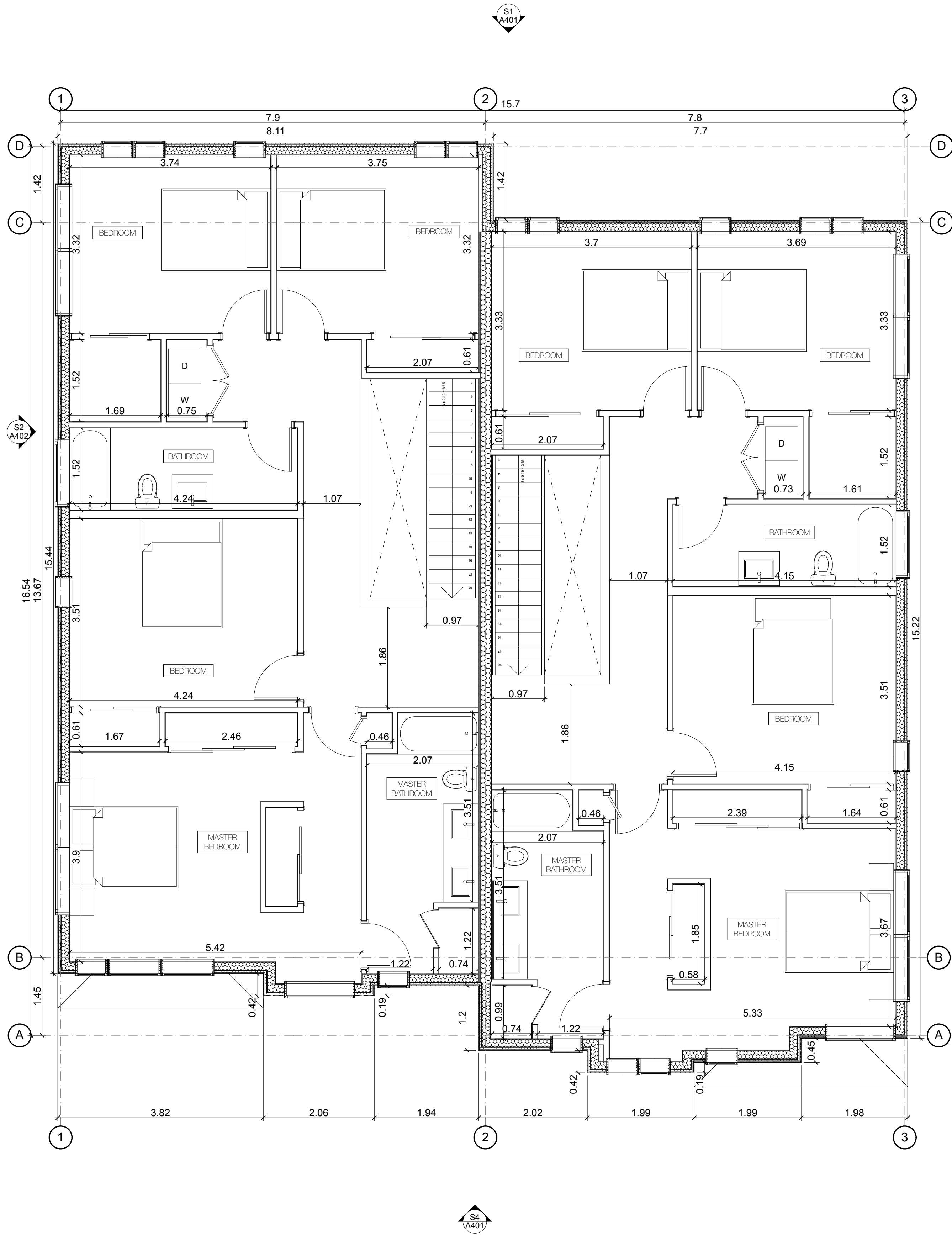
**NOT FOR CONSTRUCTION**

**2476 & 2482 Confederation Pkwy.**  
Mississauga, ON

**SECOND FLOOR PLAN**

**A202**

Drawn: TB



1. Copyright of this drawing is reserved by the Architect. The drawing and all associated documents are an instrument of service by the Architect. The drawing and the information contained therein may not be reproduced in whole or in part without prior written permission of the Architect.

2. These Contract Documents are the property of the Architect. The Architect bears no responsibility for the interpretation of these documents by the Contractor. Upon written application, the Architect will provide written graphic clarification or supplementary information regarding the intent of the Contract Documents. The Architect will review Shop Drawings submitted by the Contractor for design conformance only.

3. Drawings are not to be scaled for construction. The Contractor is to verify all existing conditions and dimensions required to perform the work and report any discrepancies with the Contract Documents to the Architect before commencing any work.

4. Positions of specified finished mechanical or electrical devices, fittings, and fixtures are indicated on architectural drawings. The locations shown on the architectural drawings govern over the Mechanical and Electrical drawings. These items are to be installed as indicated by the Architect.

5. These drawings are not to be used for construction unless noted below as "Issuance For Construction".

6. All work is to be carried out in conformance with the Code and Bylaws of the authorities having jurisdiction.

7. The Architect of these plans and specifications gives no warranty or representation to any party about the constructability of the buildings represented by them. All contractors or subcontractors must satisfy themselves when bidding and at all times ensure that they can properly construct the work represented by these plans.

© TREVOR MCIVOR ARCHITECT INC. 2017

| Rev. | Issue Name                         | Change ID | Change Name | Date       |
|------|------------------------------------|-----------|-------------|------------|
| 01   | Issued for Zoning By-Law Amendment |           |             | 2019-06-16 |

TREVOR MCIVOR ARCHITECT INC.

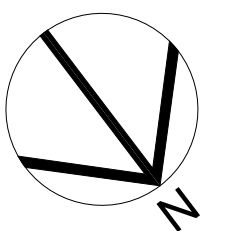
Architecture:  
Trevor McIvor: trevor@trevormcivor.com  
Steve Choe: steve@trevormcivor.com

134 Peter St., #1301  
Toronto, ON M5A 4M2  
t: (416) 525 7772  
w: www.trevormcivor.com

Consultant Architect



NOT FOR CONSTRUCTION



2476 & 2482 Confederation Pkwy.  
Mississauga, ON

THIRD FLOOR PLAN

A203

Drawn: TB