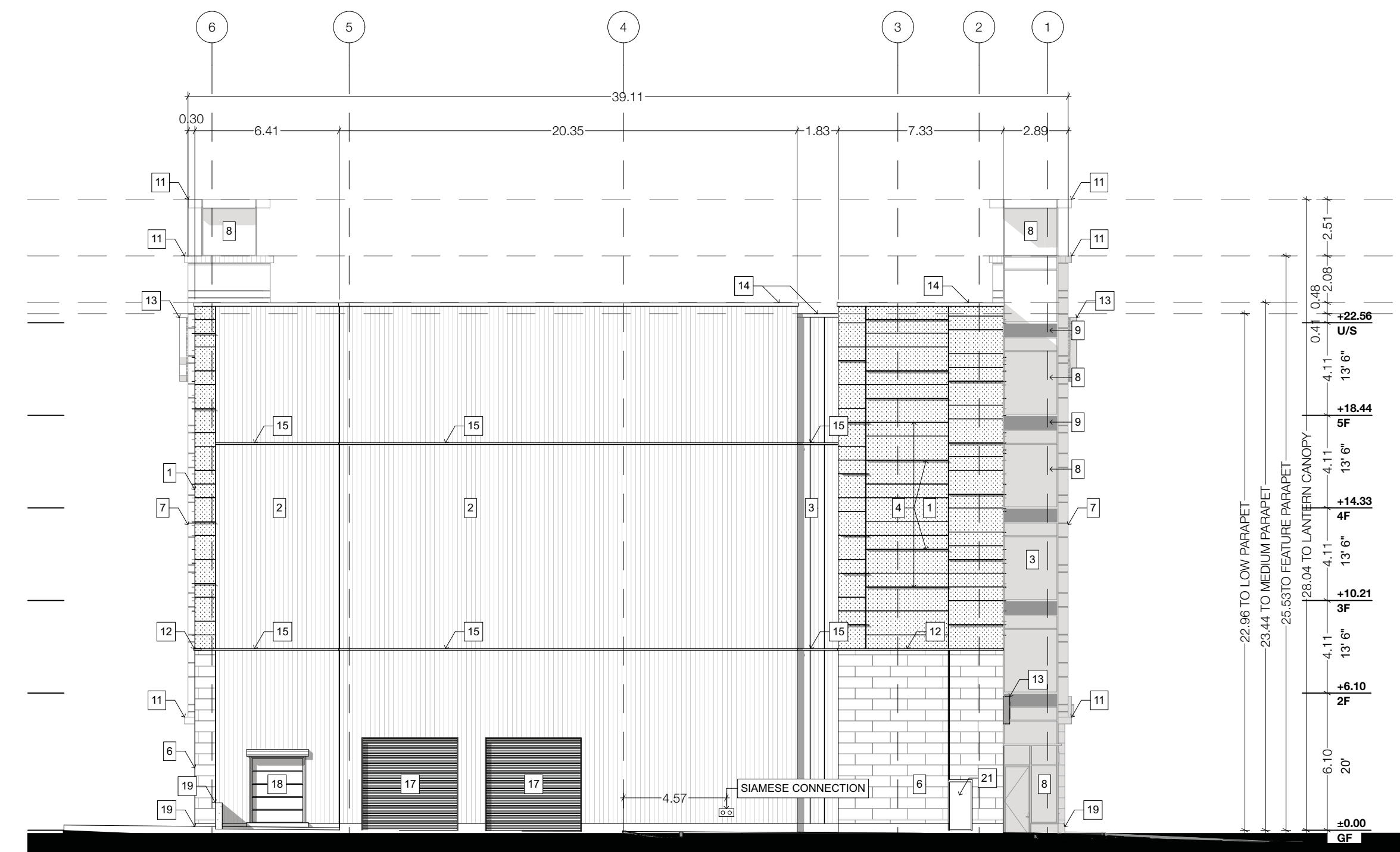


KEY PLAN  
 SCALE: 1:1000

LEGEND	
1	INSULATED METAL PANEL (IMP) SYSTEM - HORIZONTAL ORIENTATION - MINI MICRO-RIB PROFILE - COLOUR: 'PEWTER'
2	INSULATED METAL PANEL (IMP) SYSTEM - VERTICAL ORIENTATION - 'EMBOSSED SHADOWLINE' PROFILE - COLOUR: 'PEWTER'
3	INSULATED METAL PANEL (IMP) SYSTEM - VERTICAL ORIENTATION (RECESSES & REVEALS) - 'EMBOSSED SHADOWLINE' PROFILE - COLOUR: 'DARK BRONZE'
4	KINGSPAN KARRIER FIN - STANDARD RECTANGLE FIN - COLOUR: 'PEWTER'
5	RESERVED
6	3 1/2" ARCHITECTURAL MASONRY UNIT - ARISCRRAFT ADAIR LIMESTONE - FINISH: FINE DRESSED SEPA-VEINED - RUNNING BOND
7	ALUCOIL - ALUMINIUM COMPOSITE MATERIAL - FINISH: 'LIGHT WENGÉ' 4mm FR CORE
8	CURTAIN WALL GLAZING
9	SPANDREL PANEL - COLOUR: TO MATCH IMP 'PEWTER'
10	GLASS SIGNAGE BAND - COLOUR: TBD
11	METAL CANOPY - COLOUR TO MATCH IMP 'PEWTER'
12	CONTINUOUS BENT FLASHING SILL
13	INTERIALLY LIT SIGNAGE - COLOUR TBD
14	FIRESTONE PREFINISHED METAL CAP - FINISH: 'SLATE GREY' (ALL BENT METAL CAP PARAPETS)
15	PREFINISHED METAL IMP STACK JOINT COVER TRIM - COLOUR TO MATCH IMP 'PEWTER'
16	INSULATED HOLLOW METAL DOOR - COLOUR TO MATCH IMP 'PEWTER'
17	HIGH SPEED ROLL-UP O/H DOOR
18	INSULATED O/H DOOR - COLOUR TO MATCH IMP 'PEWTER'
19	POURED CONCRETE
20	BACK-LIT GLASS WITH FRIT PATTERN - COLOUR: TO MATCH - 'BOLD BLUE' WITH WHITE FRITTING
21	INSULATED HOLLOW METAL DOOR - COLOUR TO MATCH ARCHITECTURAL MASONRY UNIT 'ADAIR LIMESTONE'
22	INSULATED HOLLOW METAL DOOR - COLOUR TO MATCH VERTICAL IMP SYSTEM 'DARK BRONZE'



SOUTH ELEVATION



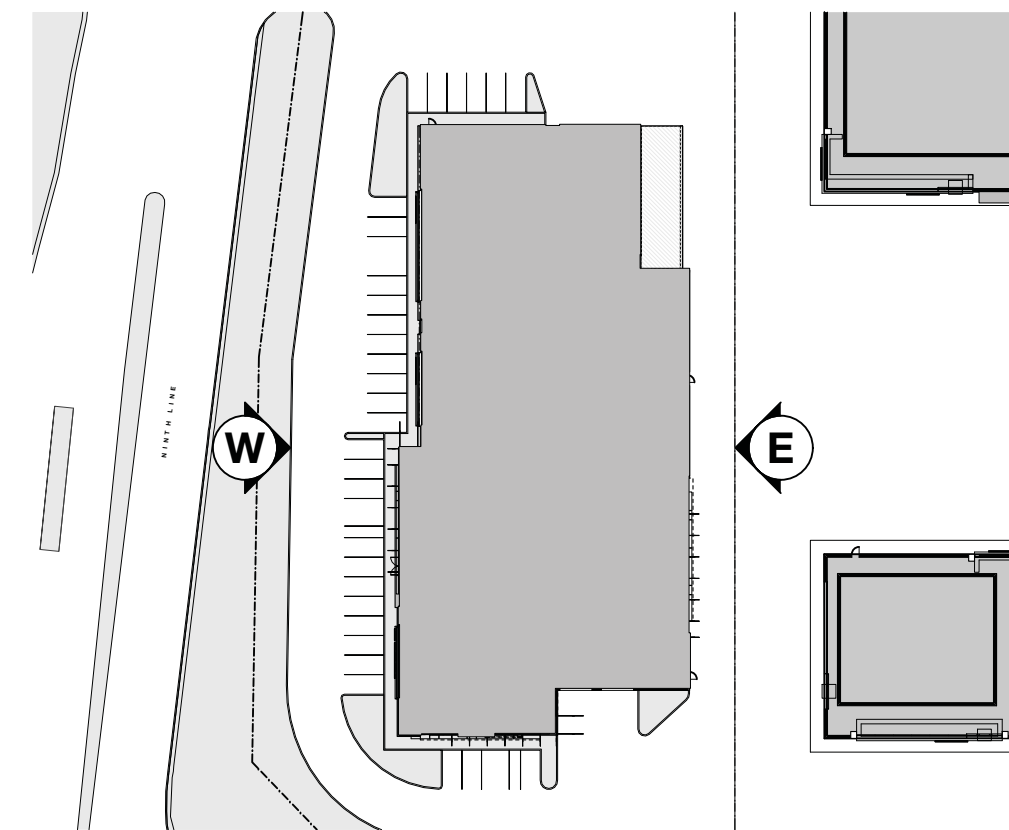
NORTH ELEVATION



Note: Building permit issuance shall be subject to the building permit drawings not being in contravention with these approved plans and drawings including, but not limited to, the exterior design of the building and exterior building materials

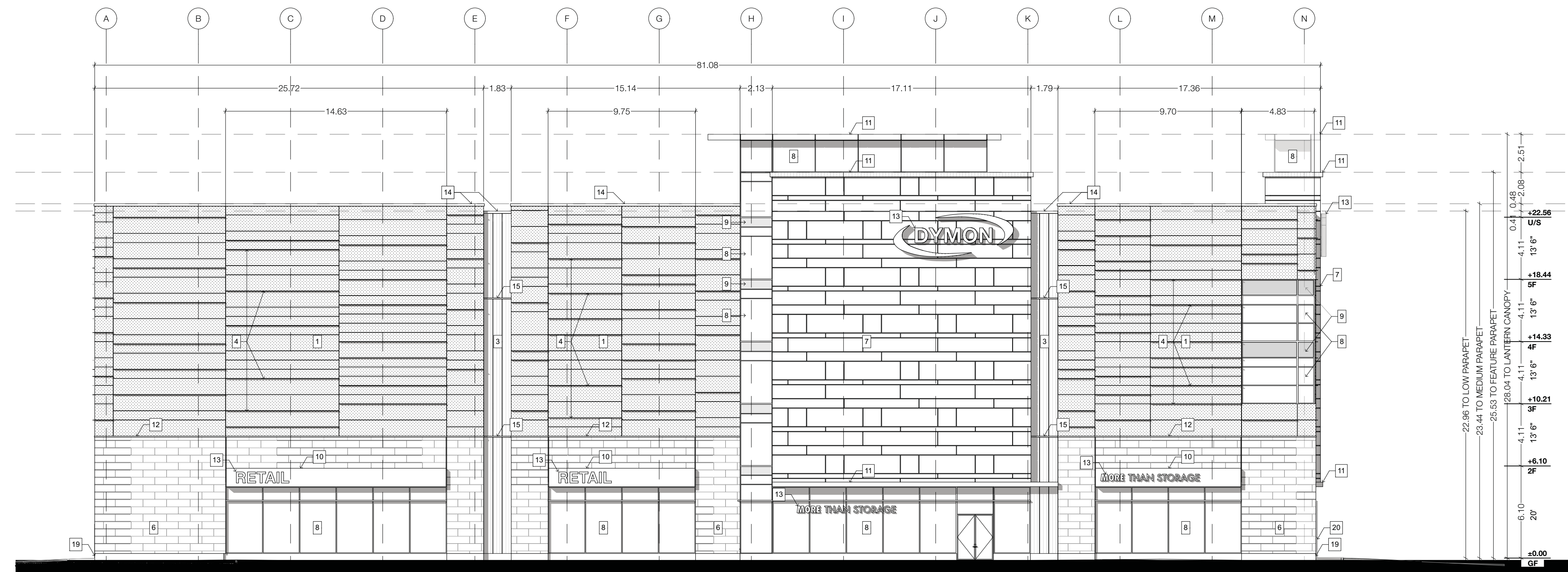
Note: This drawing and all copyright therein are the sole and exclusive property of TACT Design Inc. Reproduction or use of this drawing in whole or in part by any means or in any way whatsoever without the prior written consent of TACT Design is strictly prohibited. Do not scale this drawing. Published Wednesday, November 14, 2018. file: 1611 3855 Dundas v\_13\_shadow studies.pln

design architect	<b>TACT Architecture Inc.</b> 6059 College Street (near 16th) Toronto, Ontario M6G 1B8 416-516-1949 info@tactdesign.ca
architect of record	<b>nicholas caragianis architect</b> 137 Dundas Street Toronto, Ontario M5G 1S7 416-597-8801 416-597-8805 info@nicholascaragianis.com
job title	<b>Dymon Storage</b> 3855 Dundas Street East Mississauga, Ontario
client	<b>Dymon Capital Corporation</b>
city file number	
sheet title	<b>South &amp; North Elevations</b>
drawn by	<b>JL, RD, FT, HG, ST</b>
checked by	<b>PJ</b>
issue date	<b>Wednesday, November 14, 2018</b>
scale	<b>1:200</b>
job number	<b>1611-15</b>

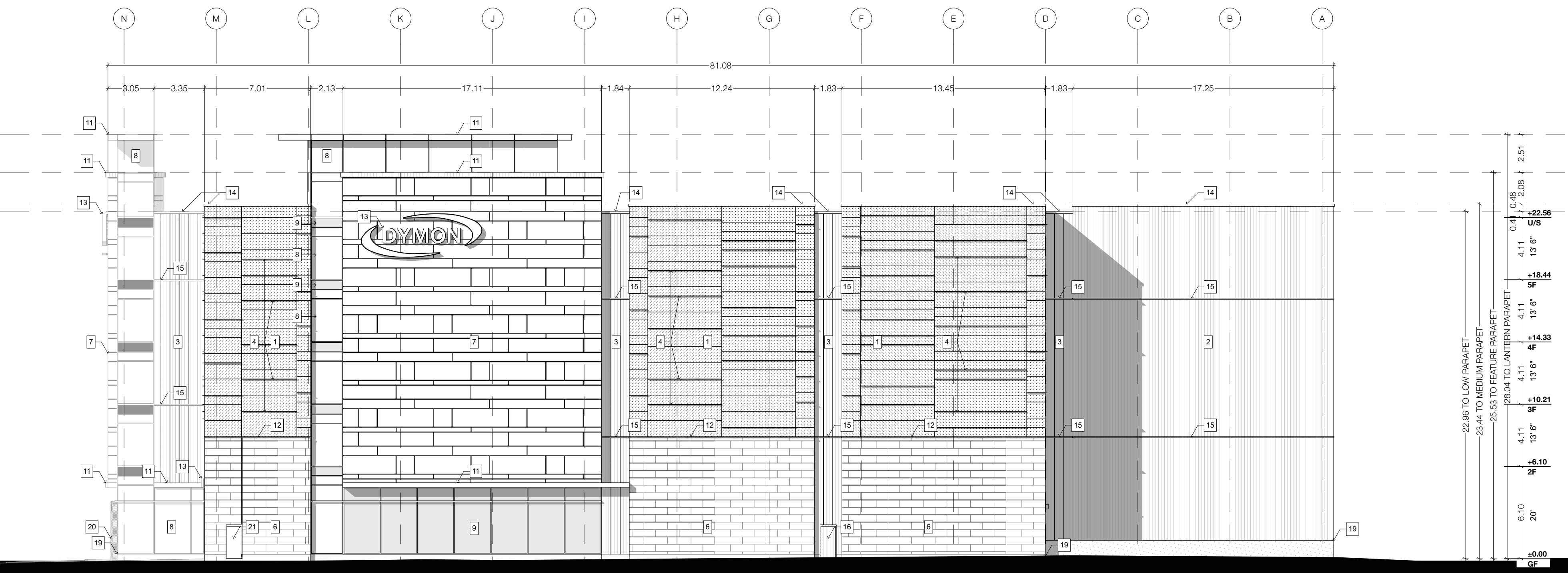


KEY PLAN  
 SCALE: 1:1000

LEGEND	
1	INSULATED METAL PANEL (IMP) SYSTEM - HORIZONTAL ORIENTATION - MINI MICRO-RIB PROFILE - COLOUR: 'PEWTER'
2	INSULATED METAL PANEL (IMP) SYSTEM - VERTICAL ORIENTATION - 'EMBOSSED SHADOWLINE' PROFILE - COLOUR: 'PEWTER'
3	INSULATED METAL PANEL (IMP) SYSTEM - VERTICAL ORIENTATION (RECESSES & REVEALS) - 'EMBOSSED SHADOWLINE' PROFILE - COLOUR: 'DARK BRONZE'
4	KINGSPAN KARRIER FIN - STANDARD RECTANGLE FIN - COLOUR: 'PEWTER'
5	RESERVED
6	3 1/2" ARCHITECTURAL MASONRY UNIT - ARISCRAPT ADAIR LIMESTONE - FINISH: FINE DRESSED SEPA-VEINED - RUNNING BOND
7	ALUCOIL - ALUMINIUM COMPOSITE MATERIAL - FINISH: 'LIGHT WENGÉ' 4mm FR CORE
8	CURTAIN WALL GLAZING
9	SPANDREL PANEL - COLOUR: TO MATCH IMP 'PEWTER'
10	GLASS SIGNAGE BAND - COLOUR: TBD
11	METAL CANOPY - COLOUR TO MATCH IMP 'PEWTER'
12	CONTINUOUS BENT FLASHING SILL
13	INTERIALLY LIT SIGNAGE - COLOUR TBD
14	FIRESTONE PREFINISHED METAL CAP - FINISH: 'SLATE GREY' (ALL BENT METAL CAP PARAPETS)
15	PREFINISHED METAL IMP STACK JOINT COVER TRIM - COLOUR TO MATCH IMP 'PEWTER'
16	INSULATED HOLLOW METAL DOOR - COLOUR TO MATCH IMP 'PEWTER'
17	HIGH SPEED ROLL-UP O/H DOOR
18	INSULATED O/H DOOR - COLOUR TO MATCH IMP 'PEWTER'
19	POURED CONCRETE
20	BACK-LIT GLASS WITH FRIT PATTERN - COLOUR: TO MATCH - 'BOLD BLUE' WITH WHITE FRITTING
21	INSULATED HOLLOW METAL DOOR - COLOUR TO MATCH ARCHITECTURAL MASONRY UNIT 'ADAIR LIMESTONE'
22	INSULATED HOLLOW METAL DOOR - COLOUR TO MATCH VERTICAL IMP SYSTEM 'DARK BRONZE'



WEST ELEVATION



EAST ELEVATION



**Note:** Building permit issuance shall be subject to the building permit drawings not being in contravention with these approved plans and drawings including, but not limited to, the exterior design of the building and exterior building materials.

**Note:** This drawing and all copyright therein are the sole and exclusive property of TACT Design Inc. Reproduction or use of this drawing in whole or in part by any means or in any way whatsoever without the prior written consent of TACT Design is strictly prohibited. Do not scale this drawing. Published Wednesday, November 14, 2018. file: 1611-13855 Dundas v\_13\_shadow studies.pln

design architect  
**TACT Architecture Inc.**  
 6050 College Street (near Hwy 104)  
 Toronto, Ontario M9G 1B8  
 416.516.1949  
 info@tactdesign.ca

architect of record  
**nicholas caragias architect**  
 137 Dundas Street East, Suite 200  
 Toronto, Ontario M5G 1R7  
 416.516.1949  
 info@nicholascaragias.com

job title  
**Dymon Storage**  
 3855 Dundas Street East  
 Mississauga, Ontario

client  
**Dymon Capital Corporation**

city file number

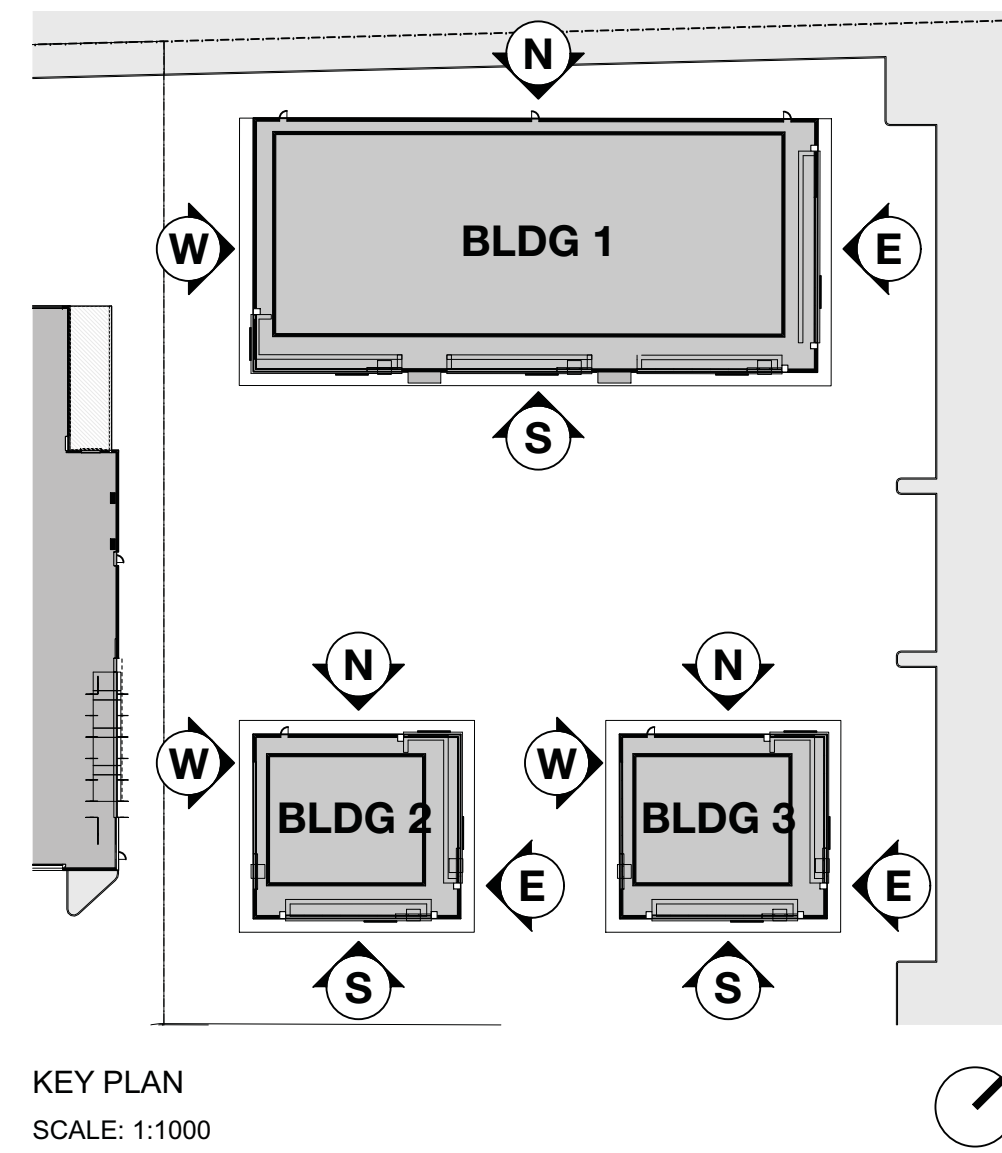
sheet title  
**West & East Elevations**

drawn by **JL, RD, FT, HG, ST** checked by **PJ**

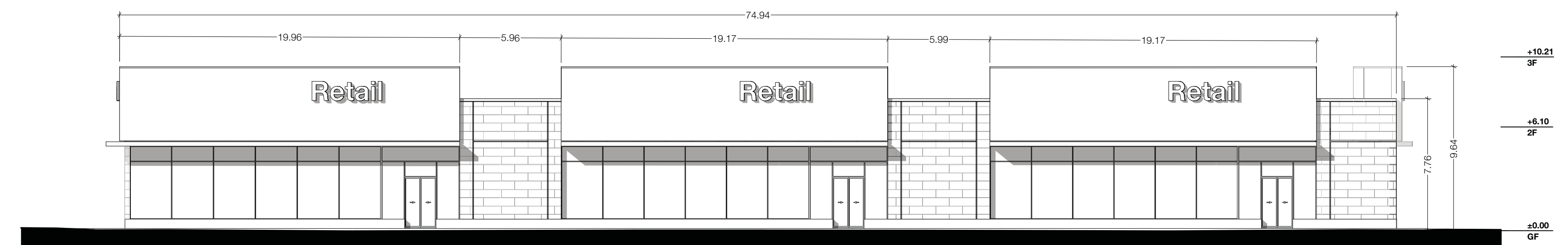
issue date  
**Wednesday, November 14, 2018**

scale **1:200** job number **1611-15**

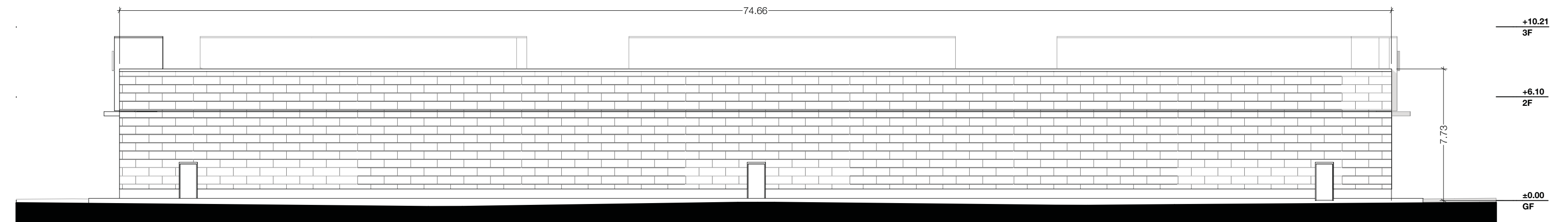
Revision:  
 YYYYMMDD Revision  
 2017.11.16 SPC SUBMISSION  
 2018.09.11 ZSA SUBMISSION  
 2018.11.15 ZSA SUBMISSION



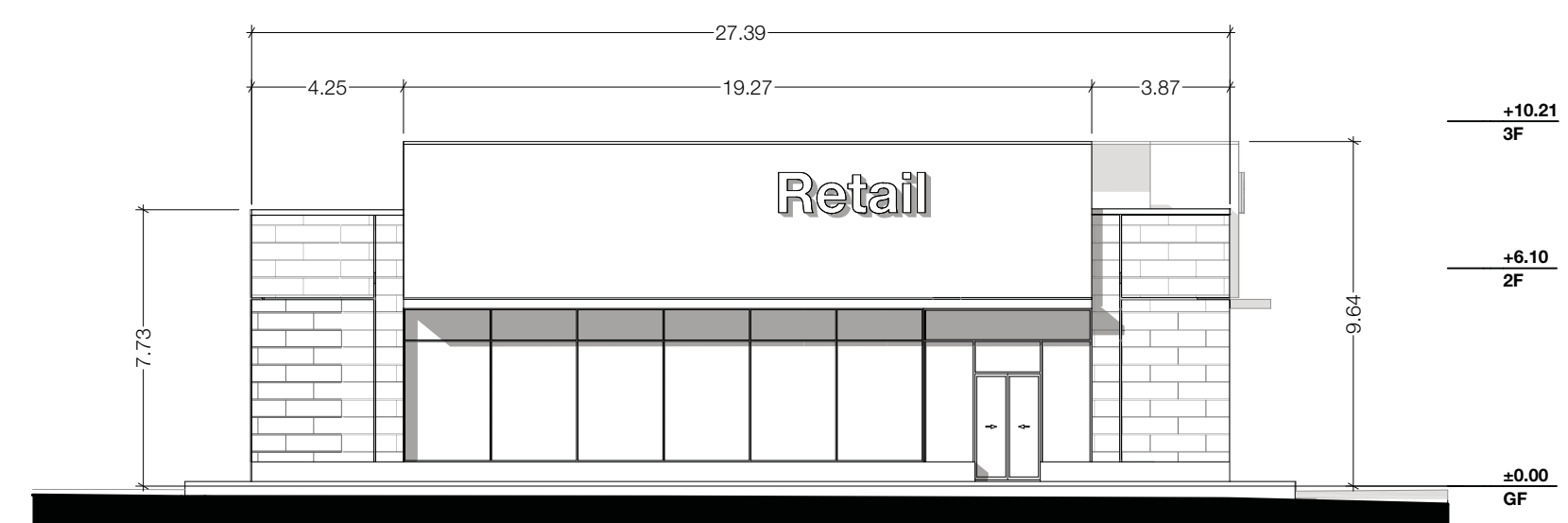
KEY PLAN  
SCALE: 1:1000



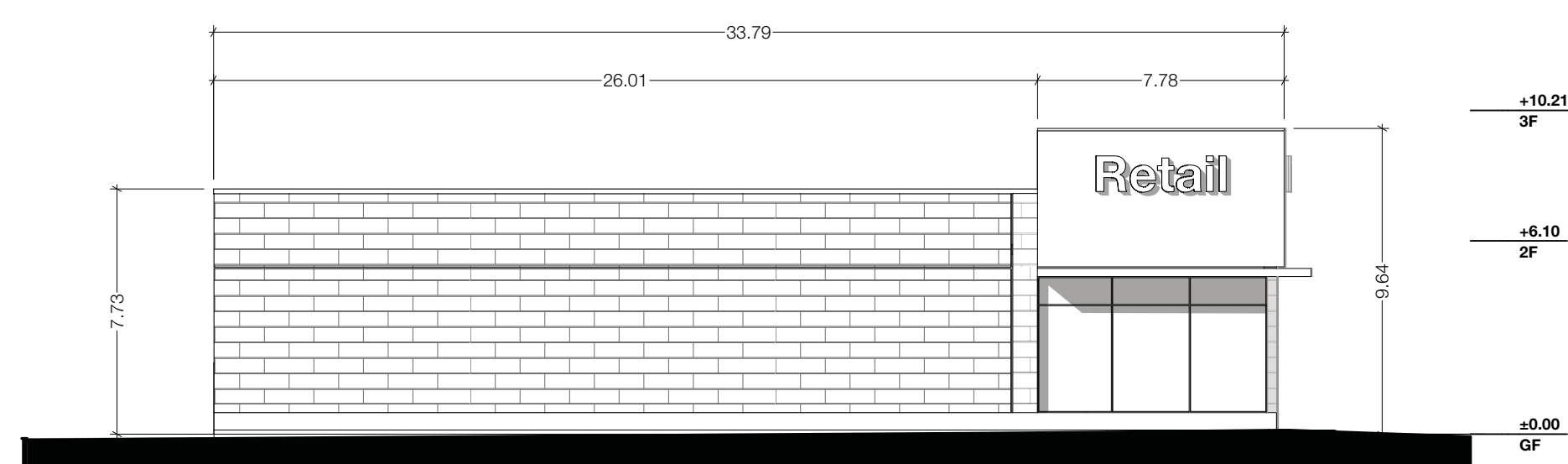
BLDG 1 SOUTH ELEVATION



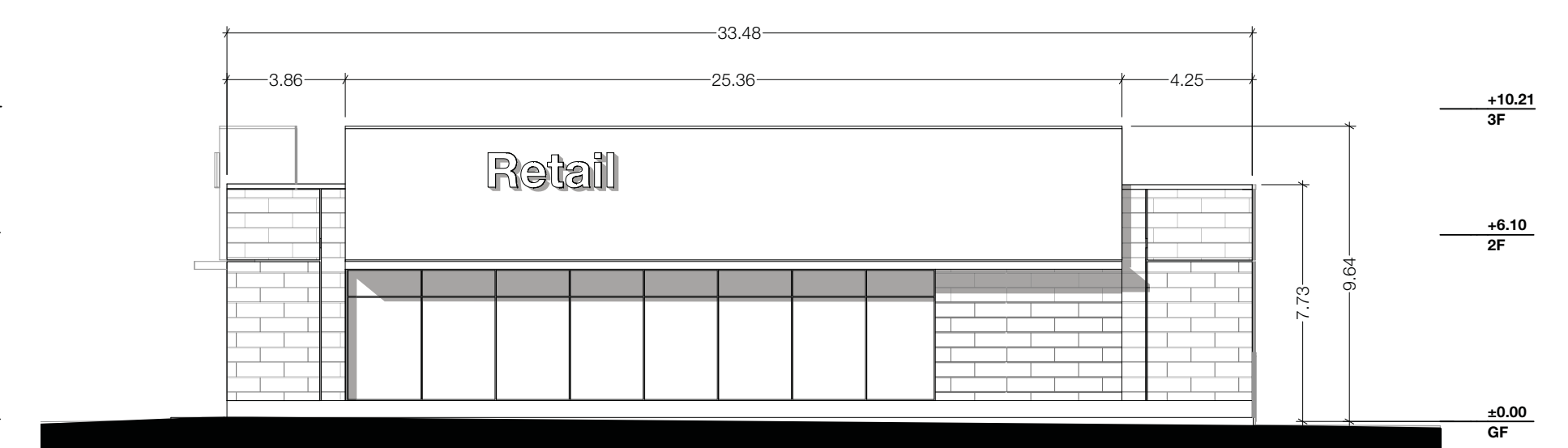
BLDG 1 NORTH ELEVATION



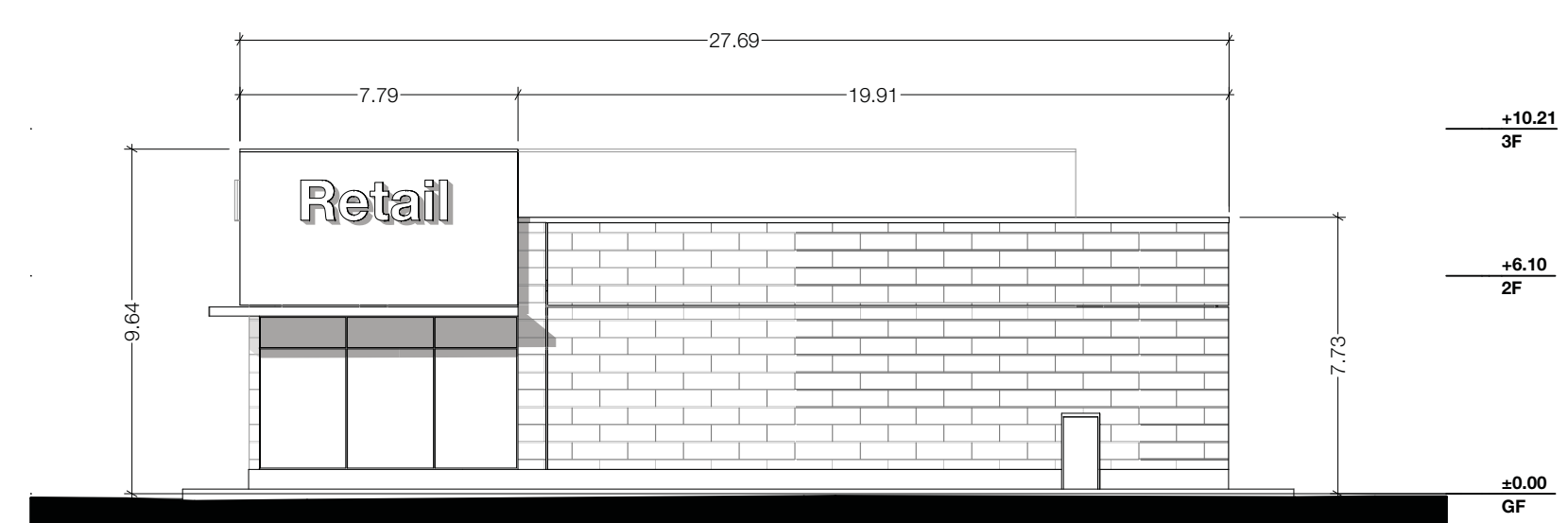
BLDG 3 SOUTH ELEVATION



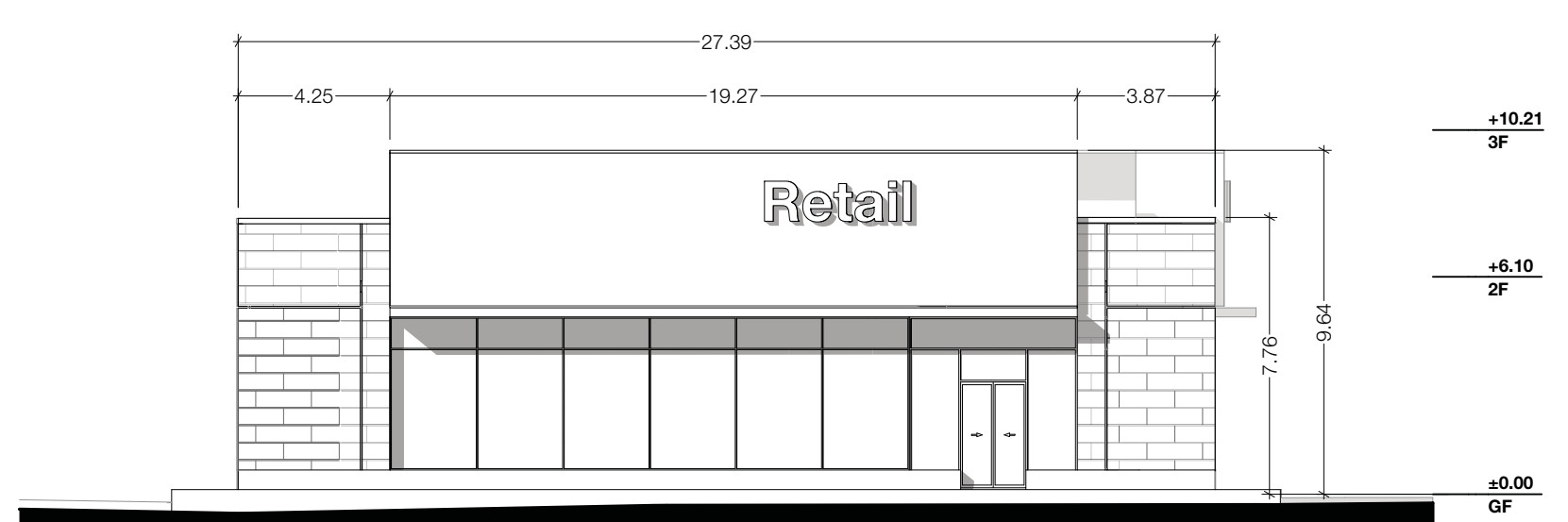
BLDG 1 WEST ELEVATION



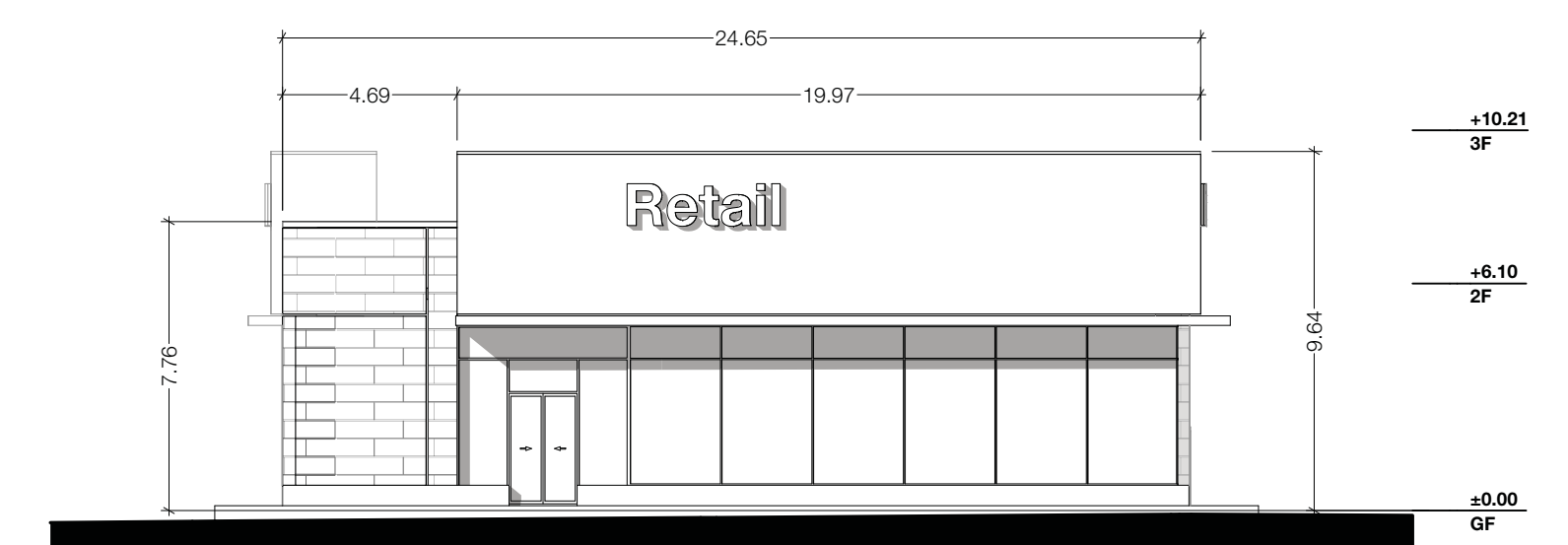
BLDG 1 EAST ELEVATION



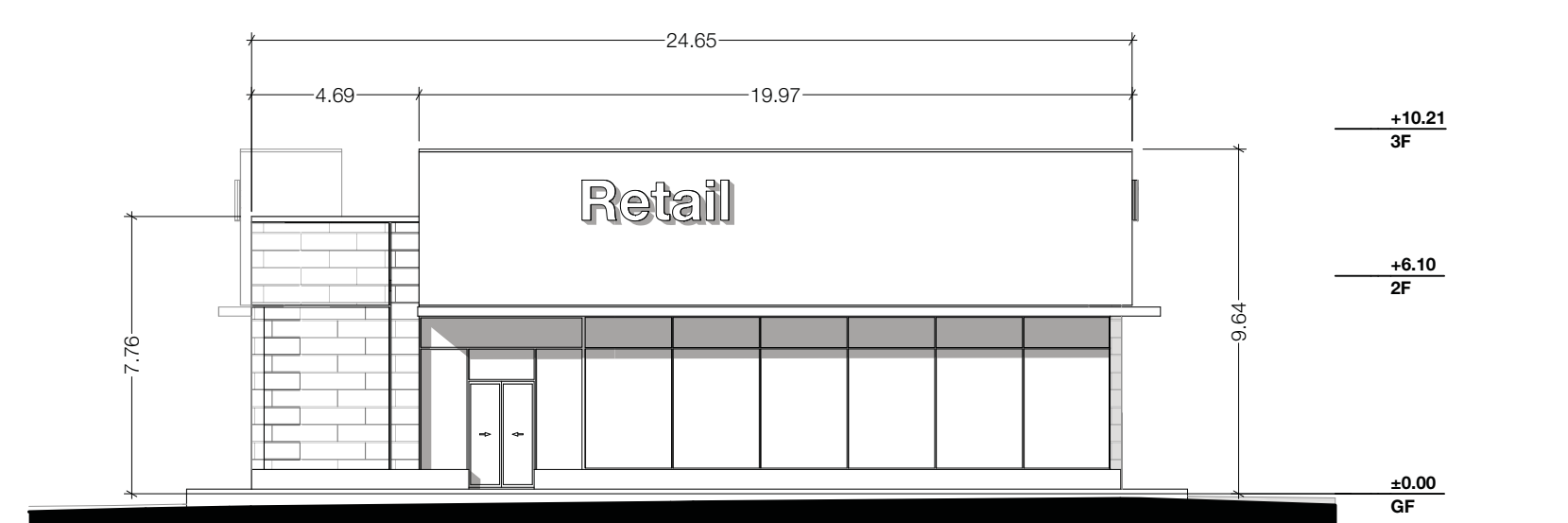
BLDG 3 NORTH ELEVATION



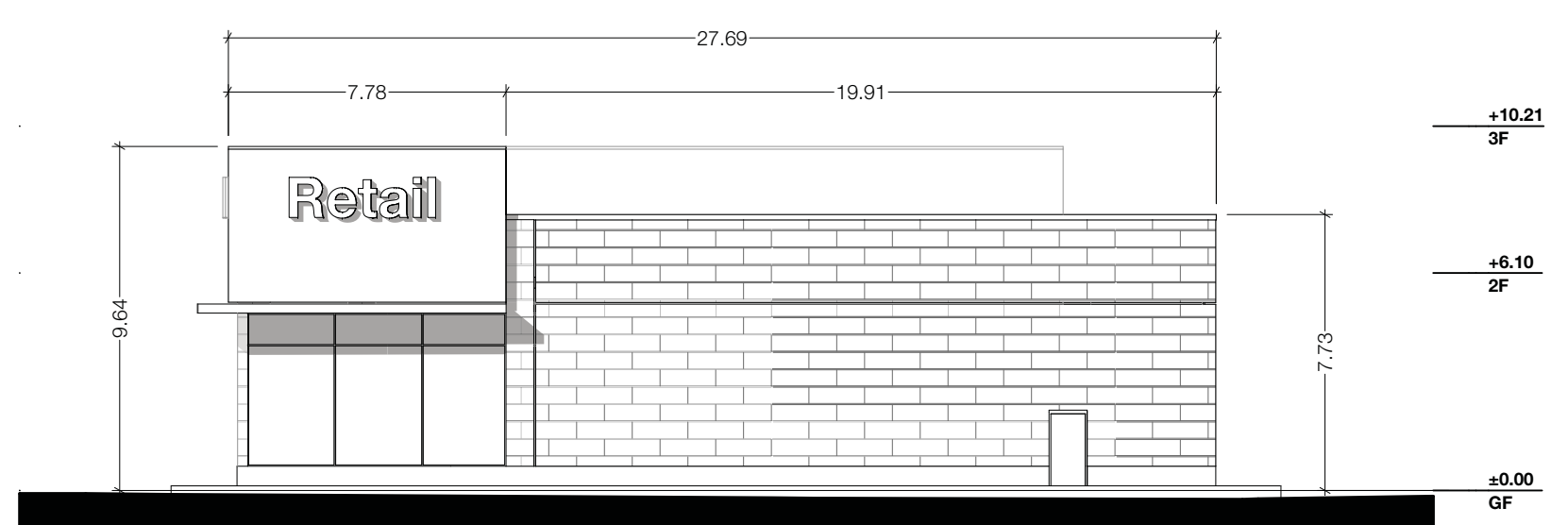
BLDG 2 SOUTH ELEVATION



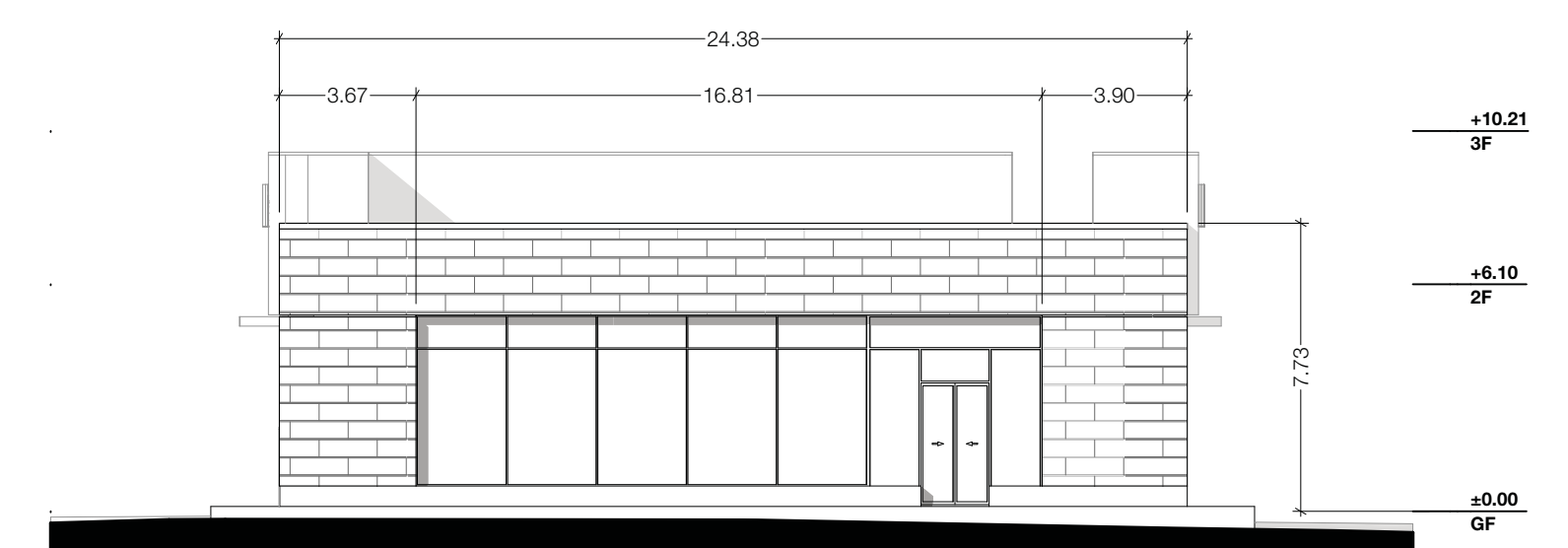
BLDG 2 EAST ELEVATION



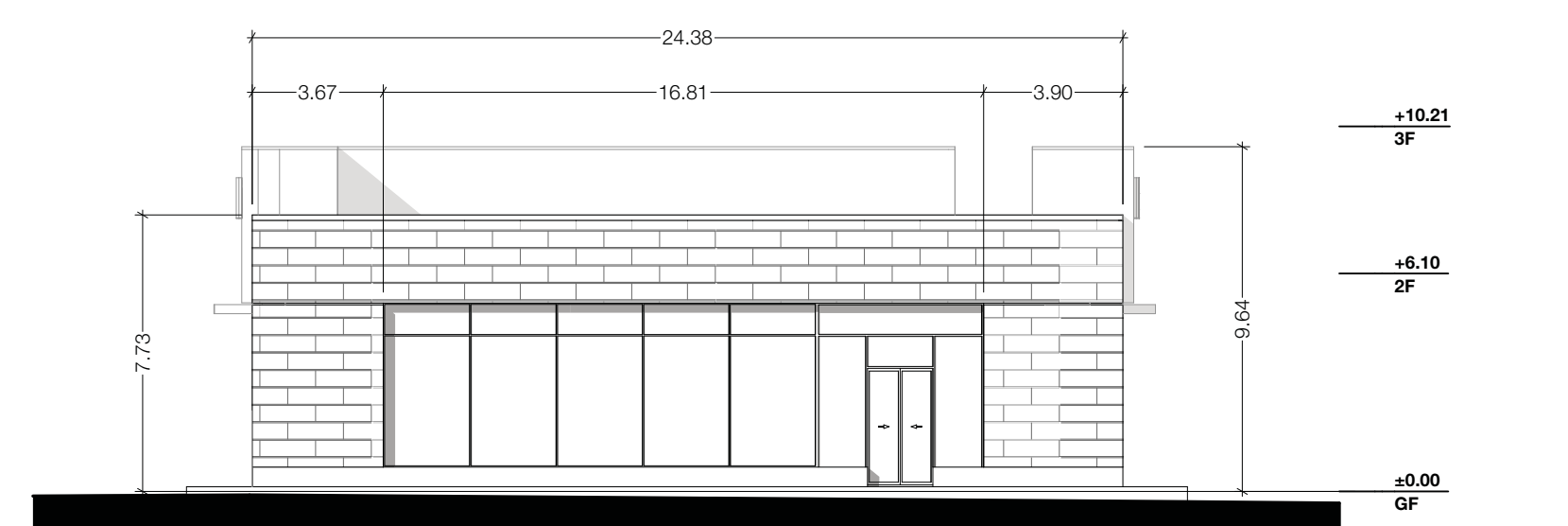
BLDG 3 EAST ELEVATION



BLDG 2 NORTH ELEVATION



BLDG 2 WEST ELEVATION



BLDG 3 WEST ELEVATION



**Note:** Building permit issuance shall be subject to the building permit drawings not being in contravention with these approved plans and drawings including, but not limited to, the exterior design of the building and exterior building materials.

**Note:** This drawing and all copyright therein are the sole and exclusive property of TACT Design Inc. Reproduction or use of this drawing in whole or in part by any means or in any way whatsoever without the prior written consent of TACT Design is strictly prohibited. Do not scale this drawing.  
 Published Wednesday, November 14, 2018.  
 file: 16111 3855 Dundas v\_13\_shadow studies.pln

design architect  
**TACT Architecture Inc.**  
 6095 College Street (near 16th)  
 Toronto, Ontario M6G 1B8  
 416-516-1949  
 info@tactdesign.ca

architect of record  
**nicholas caragianis architect inc.**  
 137 Dundas Street  
 Toronto, Ontario M5G 1R7  
 416-593-8801  
 416-593-8899  
 info@nicholasca.com

job title  
**Dymon Storage**  
 3855 Dundas Street East  
 Mississauga, Ontario

client  
**Dymon Capital Corporation**

city file number

sheet title  
**Retail Elevations**

drawn by **JL, RD, FT, HG, ST** checked by **PJ**

issue date  
**Wednesday, November 14, 2018**

scale **1:200** job number **1611-15**