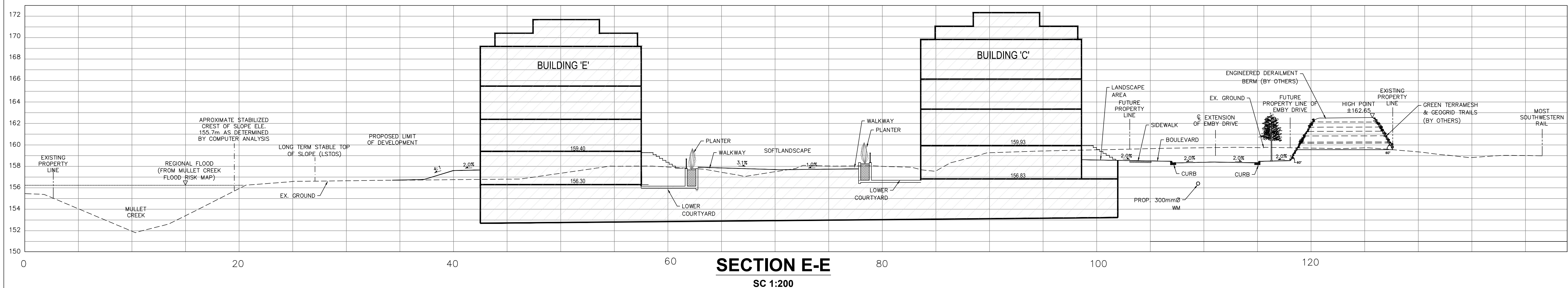
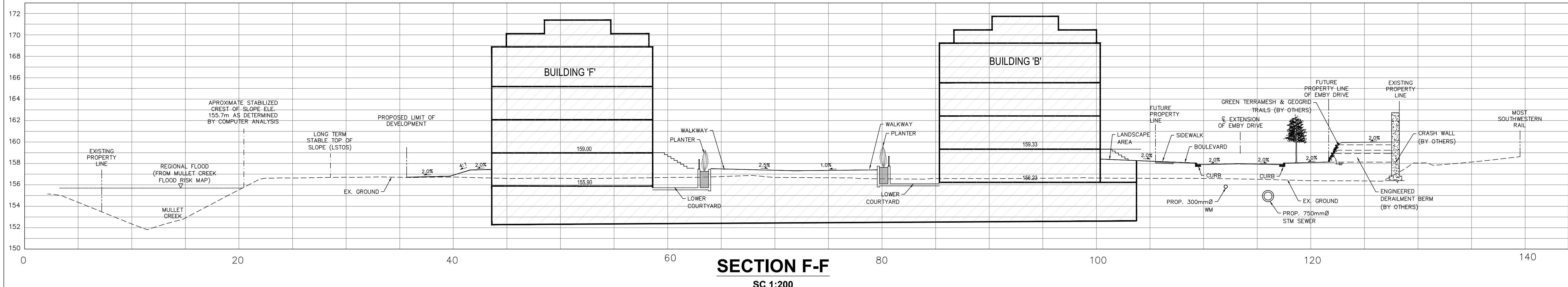


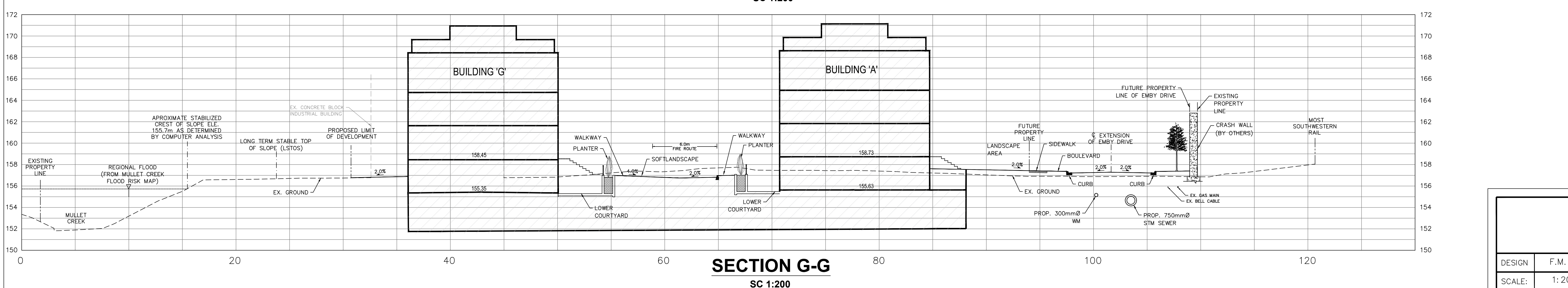
SECTION D-D
SC 1:200



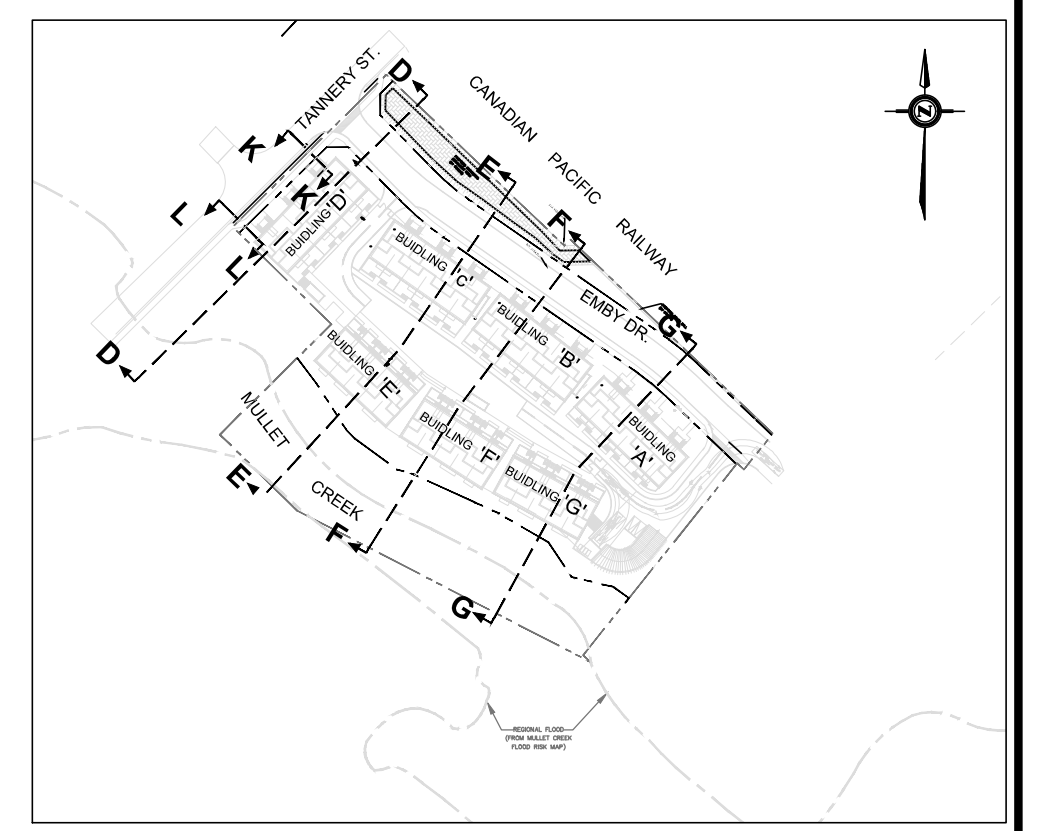
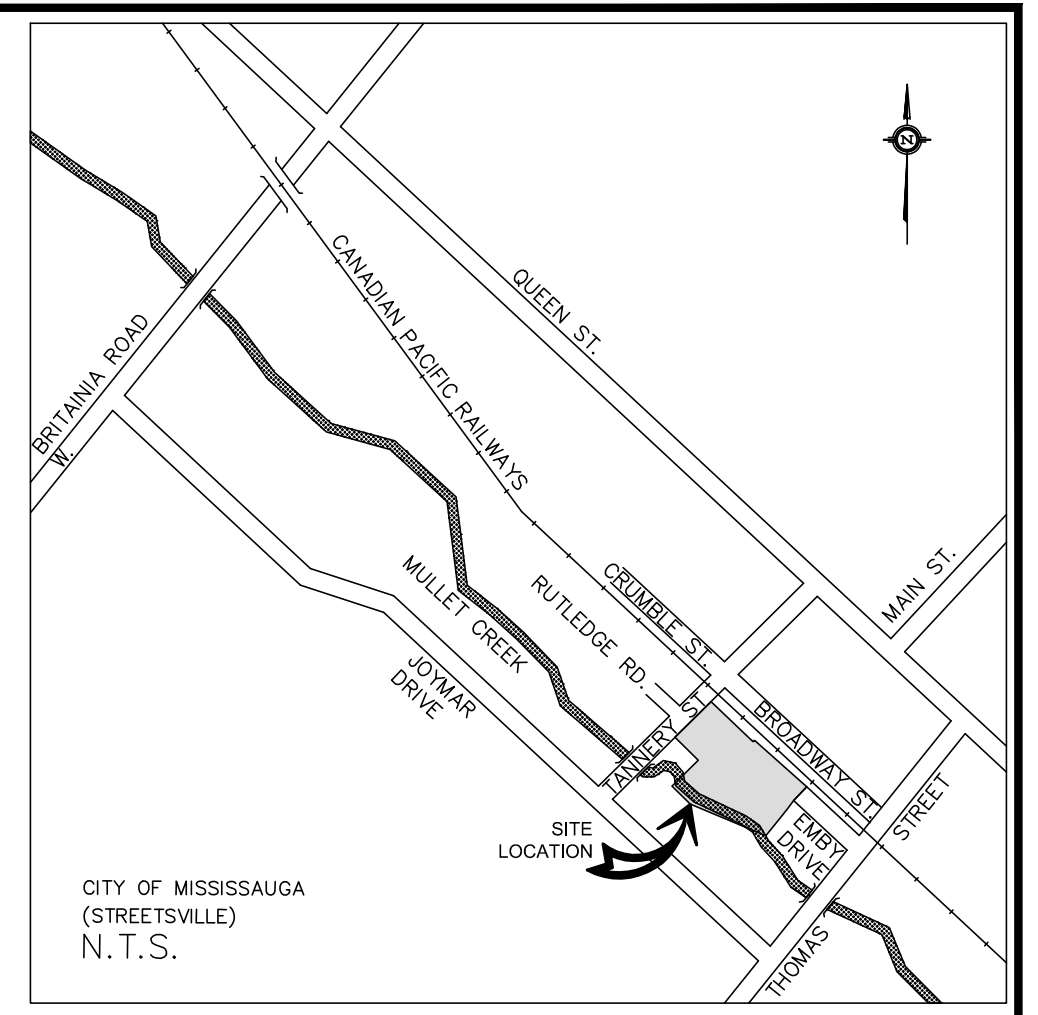
SECTION E-E
SC 1:200



SECTION F-F
SC 1:200



SECTION G-G
SC 1:200



- GENERAL NOTES:**
- REFER TO DWG. C-100 FOR PROPOSED GRADING PLAN.
 - REFER TO DWG. C-101 FOR PROPOSED SEWERS AND WATERMAIN.
 - REFER TO DWG. C-106 FOR PROPOSED BERM AND CRASH WALL CROSS SECTIONS.



No.	DATE	DESCRIPTION
1	2019/08/27	ISSUED FOR ZBA RESUBMISSION

425 Cochrane Drive, Suite 800
Markham, Ontario
L3R 9R9, Canada
Tel: (905)470-0015 Fax: (905)470-0000
www.LEA.ca

LEA Consulting Ltd.
Consulting Engineers
and Planners

F. MORSE
10022039
JUNE 27
2019
PROVIDE OR REVISED

51-57 TANNERY STREET DEVELOPMENT
EAST - WEST CROSS SECTIONS

DESIGN	F.M.	DRAWN	M.N.	CHECKED	R.B.	CONTRACT No.	18038	
SCALE:	1:200 (FULL SIZE)						DRAWING NUMBER	C-103
DATE:	MAY 09, 2019							

DRAWING NAME: F:\18038 - 51 Tannery Street Development Drawings\C-103_105_106_Cross Sections.dwg Jun 27, 2019 11:36am