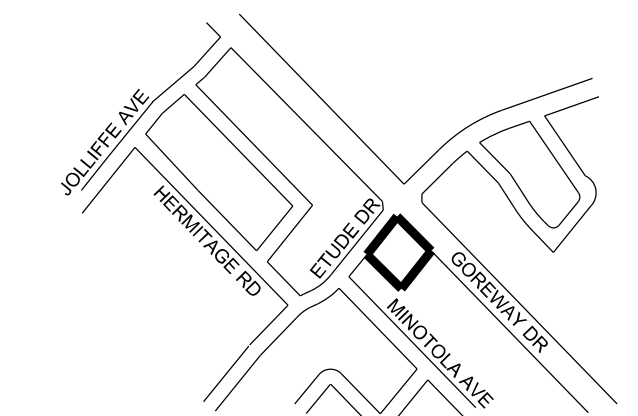


DRAFT PLAN OF SUBDIVISION

PART OF LOT 11
CONCESSION 7
EAST OF HURONTARIO STREET
GEOGRAPHIC TOWNSHIP OF TORONTO
CITY OF MISSISSAUGA
MUNICIPALITY OF PEEL



KEY PLAN
1:10,000



SUBJECT PROPERTY

OWNER'S CERTIFICATE:
I authorize Weston Consulting Group Inc. to prepare and submit this plan for draft approval.

Date: _____

RJP LAL
201812 ONTARIO INC.
1098 PETER ROBERTSON BOULEVARD, SUITE 24
BRAMPTON, ONTARIO L6R 3A5
TEL: (905) 751-6800

SURVEYOR'S CERTIFICATE:
I hereby certify that the boundaries of the lands being subdivided and their correct relationship to the adjacent lands are accurately and correctly shown on this plan.

Date: DECEMBER 21, 2017

J.P. GELBOIM SURVEYING LIMITED
ONTARIO LAND SURVEYORS
476 MIDDELDEN ROAD, UNIT 102
ORANGEVILLE, ONTARIO L9K 3M4
TEL: (905) 338-8210 FAX: (905) 338-8446

ADDITIONAL INFORMATION:
[Section 51(17) of the Planning Act, R.S.O. 1990, c. P.13], as amended to December 13, 2017
a), b), e), f), g), & j) - on plan.
c) - on key plan
d) - piped statistics
h) - piped water to be installed by developer
i) - clay
k) - all services to be made available by developer
l) - nil

DEVELOPMENT STATISTICS:	UNITS	AREA(HA)
Residential-Condominium Townhouses [Blk.1]:	14	0.3977
Sight Triangle [Block 2]:		0.0059
0.3 m Reserves [Blocks 3-4]:		0.0032
TOTAL	14	0.4068

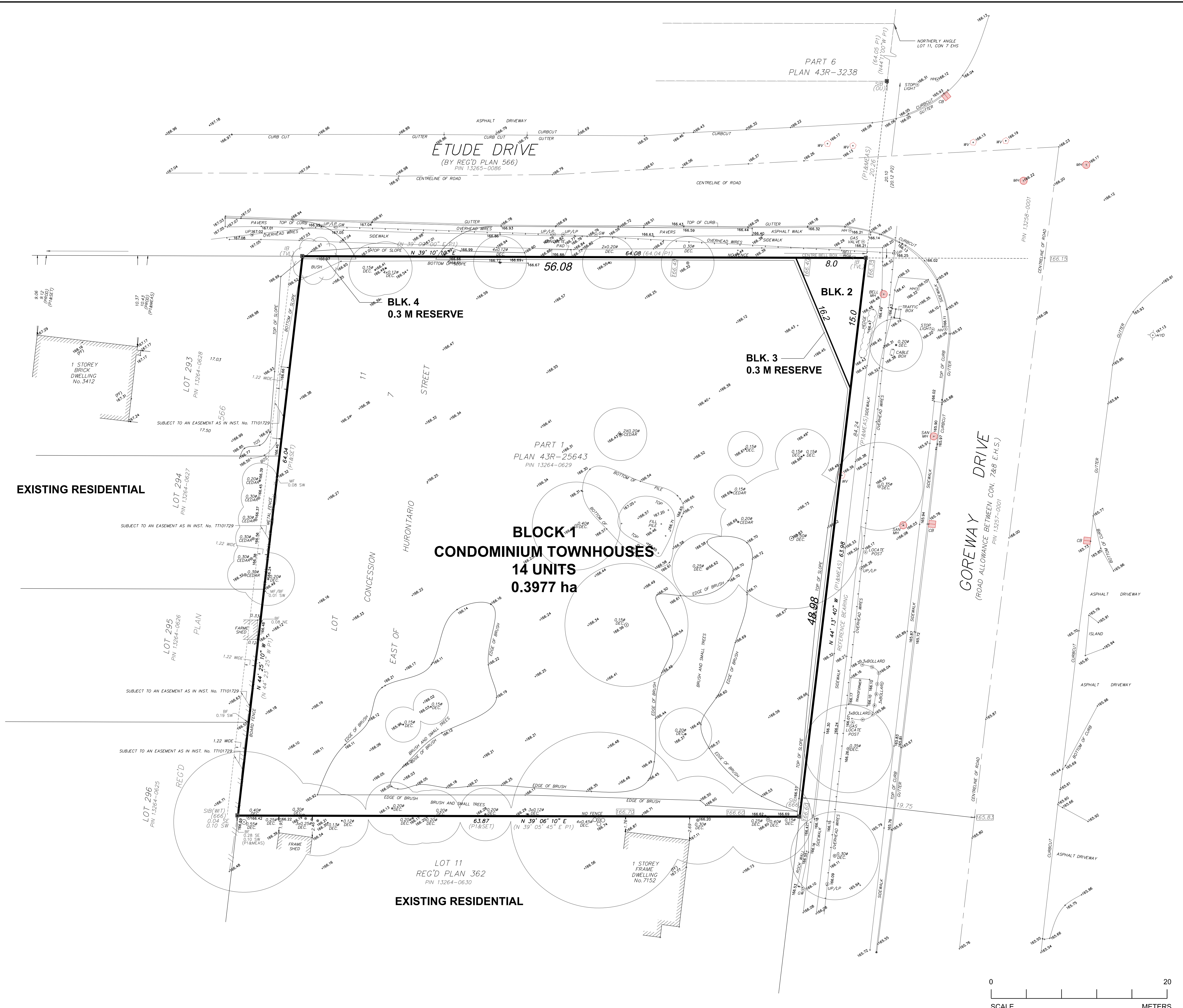
Net Density: 35.2 uph
Parking Provided: 28 spaces (garage & driveway) plus 5 visitor spaces



REVISIONS LIST

NO.	DATE	DESCRIPTION

20 DEC 2017	FIRST DRAFT	
File Number:	7997	Drawing Number:
Date Drawn:	20 DEC 2017	
Drawn By:	SM	
Planner:	KF	
Scale:	1:200	
CAD:	7997/draft/plans/D1.dgn	



EXISTING RESIDENTIAL

EXISTING RESIDENTIAL

**BLOCK 1
CONDOMINIUM TOWNHOUSES
14 UNITS
0.3977 ha**

**BLK. 4
0.3 M RESERVE**

**BLK. 3
0.3 M RESERVE**

BLK. 2

**GOREWAY DRIVE
(ROAD ALLOWANCE BETWEEN CON. 7&8 E.H.S.)**

**ETUDE DRIVE
(BY REG'D PLAN 566)
PIN 13263-0086**

**PART 6
PLAN 43R-3238**

**PART 1
PLAN 43R-25643
PIN 13264-0629**

**LOT 11
REG'D PLAN 362
PIN 13264-0630**

**LOT 293
PIN 13264-0628**

**LOT 294
PIN 13264-0627**

**LOT 295
PIN 13264-0626**

**LOT 296
PIN 13264-0625**

