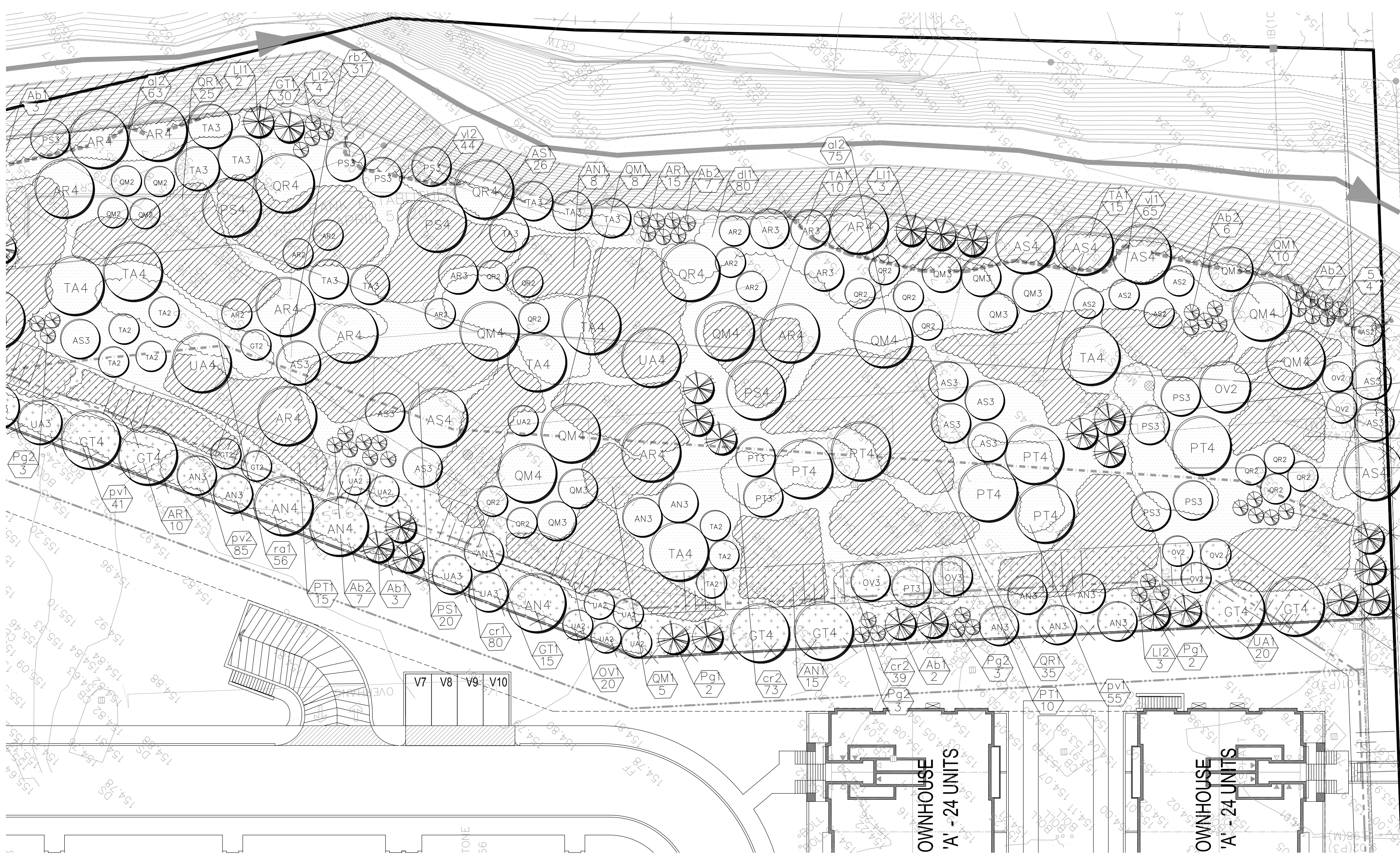


1/L100 RESTORATION PLAN

1:300



2/L100 RESTORATION PLAN

1:300

SEED MIX 'A' - BANK SEED MIX BY OSC		SEED MIX 'B' - WETLAND SEED MIX	
25% Virginia Wild Rye ( <i>Elymus virginicus</i> )	5% Bebb's Sedge ( <i>Carex bebbii</i> )	25% Fowl Bluegrass ( <i>Poa palustris</i> )	40% Fox Sedge ( <i>Carex vulpinoidea</i> )
1% Canada Blue Joint ( <i>Calamagrostis canadensis</i> )	1% Bonaset ( <i>Eupatorium perfoliatum</i> )	1% Nodding Bur Marigold ( <i>Bidens cernua</i> )	1% Purple Stemmed Aster ( <i>Aster puniceus</i> )
25% Fox Sedge ( <i>Carex vulpinoidea</i> )	25% Fowl Bluegrass ( <i>Poa palustris</i> )	1% Nodding Bur Marigold ( <i>Bidens cernua</i> )	1% Purple Stemmed Aster ( <i>Aster puniceus</i> )
30% Fowl Blue Grass ( <i>Poa palustris</i> )	40% Fox Sedge ( <i>Carex vulpinoidea</i> )	1% Nodding Bur Marigold ( <i>Bidens cernua</i> )	1% Purple Stemmed Aster ( <i>Aster puniceus</i> )
1% Canada Golden Rod ( <i>Solidago canadensis</i> )	5% Dark Green Bulrush ( <i>Scirpus atrovirens</i> )	1% Nodding Bur Marigold ( <i>Bidens cernua</i> )	1% Purple Stemmed Aster ( <i>Aster puniceus</i> )
8% New England Aster ( <i>Aster novae-angliae</i> )	1% Rice Cutgrass ( <i>Leersia oryzoides</i> )	1% Nodding Bur Marigold ( <i>Bidens cernua</i> )	1% Purple Stemmed Aster ( <i>Aster puniceus</i> )
10% Black Eye Susan ( <i>Rudbeckia hirta</i> )	10% Soft Rush ( <i>Juncus effusus</i> )	1% Nodding Bur Marigold ( <i>Bidens cernua</i> )	1% Purple Stemmed Aster ( <i>Aster puniceus</i> )
100%	100%	1% Nodding Bur Marigold ( <i>Bidens cernua</i> )	1% Purple Stemmed Aster ( <i>Aster puniceus</i> )

APPLY APPROPRIATE SEED MIX FOR AREAS AS INDICATED AT A RATE OF 25KG/HECTARE IN COMBINATION WITH A GENERALLY ACCEPTED MULCHING METHOD OVER 300mm OF CLEAN TOPSOIL.

SEED MIXTURE SUPPLIED BY ONTARIO SEED COMPANY LTD. OR APPROVED EQUAL.

ONTARIO SEED COMPANY LTD.  
WATERLOO, ONT. N2L 3Z6  
TEL: 519-886-0557  
FAX: 519-886-0605  
seed@oscseed.com

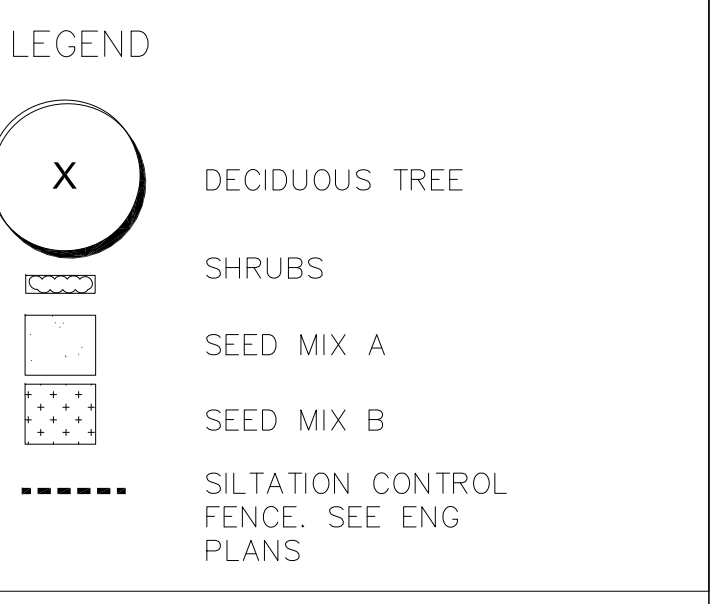
NOTE:  
-CHECK ALL QUANTITIES - REPORT ANY DISCREPANCIES TO THE LANDSCAPE ARCHITECT  
-THE QUANTITIES INDICATED ON THE PLAN SUPERSEDE THE TOTAL ON THE PLANT LIST  
-THE LAYOUT OF ALL PLANT MATERIAL IS TO BE APPROVED BY THE LANDSCAPE ARCHITECT PRIOR TO PLANTING.

NATURALIZED AREA PLANT LIST

KEY	QNT	BOTANICAL NAME	COMMON NAME	CAL.	HEIGHT	SPREAD	SPACE	COND.	KEY
DECIDUOUS TREES									
AN1	38	Acer nigrum 'Greencolumn'	Greencolumn Maple	-	1000	800	-	WB	AN1
AR1	58	Acer rubrum	Red Maple	-	1000	800	-	WB	AR1
AS1	39	Acer saccharum	Sugar Maple	-	1000	800	-	WB	AS1
GT1	73	Gleditsia Tricanthos var. inermis	Thornless Honeylocust	-	1000	800	-	WB	GT1
OV1	35	Ostrya virginiana	Ironwood	-	1000	800	-	WB	OV1
PS1	20	Prunus serotina	Black Cherry	-	1000	800	-	WB	PS1
PT1	48	Populus tremuloides	Trembling Aspen	-	1000	800	-	WB	PT1
QM1	58	Quercus macrocarpa	Bur Oak	-	1000	800	-	WB	QM1
QR1	85	Quercus rubra	Red Oak	-	1000	800	-	WB	QR1
TA1	43	Tilia americana	American Basswood	-	1000	800	-	WB	TA1
UA1	41	Ulmus americana 'Princeton'	Princeton Elm	-	1000	800	-	WB	UA1
AN2	1	Acer nigrum 'Greencolumn'	Greencolumn Maple	-	1500	800	-	WB	AN2
AR2	8	Acer rubrum	Red Maple	-	1500	800	-	WB	AR2
AS2	6	Acer saccharum	Sugar Maple	-	1500	800	-	WB	AS2
GT2	9	Gleditsia Tricanthos var. inermis	Thornless Honeylocust	-	1500	800	-	WB	GT2
OV2	14	Ostrya virginiana	Ironwood	-	1500	800	-	WB	OV2
PS2	3	Prunus serotina	Black Cherry	-	1500	800	-	WB	PS2
PT2	3	Populus tremuloides	Trembling Aspen	-	1500	800	-	WB	PT2
QM2	8	Quercus macrocarpa	Bur Oak	-	1500	800	-	WB	QM2
QR2	16	Quercus rubra	Red Oak	-	1500	800	-	WB	QR2
TA2	8	Tilia americana	American Basswood	-	1500	800	-	WB	TA2
UA2	12	Ulmus americana 'Princeton'	Princeton Elm	-	1500	800	-	WB	UA2
AN3	10	Acer nigrum 'Greencolumn'	Greencolumn Maple	-	3000	1000	-	WB	AN3
AR3	5	Acer rubrum	Red Maple	-	3000	1000	-	WB	AR3
AS3	11	Acer saccharum	Sugar Maple	-	3000	1000	-	WB	AS3
GT3	1	Gleditsia Tricanthos var. inermis	Thornless Honeylocust	-	3000	1000	-	WB	GT3
OV3	5	Ostrya virginiana	Ironwood	-	3000	1000	-	WB	OV3
PS3	8	Prunus serotina	Black Cherry	-	3000	1000	-	WB	PS3
PT3	6	Populus tremuloides	Trembling Aspen	-	3000	1000	-	WB	PT3
QM3	10	Quercus macrocarpa	Bur Oak	-	3000	1000	-	WB	QM3
QR3	4	Quercus rubra	Red Oak	-	3000	1000	-	WB	QR3
TA3	19	Tilia americana	American Basswood	-	3000	1000	-	WB	TA3
UA3	17	Ulmus americana 'Princeton'	Princeton Elm	-	3000	1000	-	WB	UA3
AN4	6	Acer nigrum 'Greencolumn'	Greencolumn Maple	50	-	1000	-	WB	AN4
AR4	10	Acer rubrum	Red Maple	50	-	1000	-	WB	AR4
AS4	7	Acer saccharum	Sugar Maple	50	-	1000	-	WB	AS4
GT4	11	Gleditsia Tricanthos var. inermis	Thornless Honeylocust	50	-	1000	-	WB	GT4
OV4	13	Ostrya virginiana	Ironwood	50	-	1000	-	WB	OV4
PS4	6	Prunus serotina	Black Cherry	50	-	1000	-	WB	PS4
PT4	8	Populus tremuloides	Trembling Aspen	50	-	1000	-	WB	PT4
QM4	6	Quercus macrocarpa	Bur Oak	50	-	1000	-	WB	QM4
QR4	7	Quercus rubra	Red Oak	50	-	1000	-	WB	QR4
TA4	7	Tilia americana	American Basswood	50	-	1000	-	WB	TA4
UA4	5	Ulmus americana 'Princeton'	Princeton Elm	50	-	1000	-	WB	UA4
CONIFEROUS TREES									
AB1	14	Abies Balsamea	Balsam Fir	-	1500	-	1200	CG	AB1
LI1	5	Larix Laricina	Tamarack	-	1500	-	1200	CG	LI1
PG1	20	Picea glauca	White Spruce	-	1500	-	1200	CG	PG1
TO1	18	Thuja occidentalis	White Cedar	-	1500	-	1200	CG	TO1
AB2	32	Abies Balsamea	Balsam Fir	-	1250	-	1200	CG	AB2
LI2	19	Larix Laricina	Tamarack	-	1250	-	1200	CG	LI2
PG2	24	Picea glauca	White Spruce	-	1250	-	1200	CG	PG2
PA2	3	Pinus strobus	White Pine	-	1250	-	1200	CG	PA2
TO2	12	Thuja occidentalis	White Cedar	-	1250	-	1200	CG	TO2
DECIDUOUS SHRUBS									
al1	119	Amelanchier laevis	Serviceberry	-	600	-	900	CC	al1
cr1	189	Cornus racemosa	Grey Dogwood	-	600	-	900	CC	cr1
bl1	80	Dieretia lonicera	Bush Honeysuckle	-	600	-	900	CC	bl1
pv1	283	Prunus virginiana ssp. virginiana	Chokecherry	-	600	-	900	CC	pv1
rs1	30	Rosa blanda	Smooth Rose	-	600	-	900	CC	rs1
ro1	56	Rubus allegheniensis	Blackberry	-	600	-	900	CC	ro1
nl1	117	Viburnum lentago	Nannyberry	-	600	-	900	CC	nl1
al2	194	Amelanchier laevis	Serviceberry	-	400	-	900	CC	al2
cr2	112	Cornus racemosa	Grey Dogwood	-	400	-	900	CC	cr2
bl2	50	Dieretia lonicera	Bush Honeysuckle	-	400	-	900	CC	bl2
pv2	85	Prunus virginiana ssp. virginiana	Chokecherry	-	400	-	900	CC	pv2
rs2	31	Rosa blanda	Smooth Rose	-	400	-	900	CC	rs2
ro2	50	Rubus allegheniensis	Blackberry	-	400	-	900	CC	ro2
nl2	123	Viburnum lentago	Nannyberry	-	400	-	900	CC	nl2

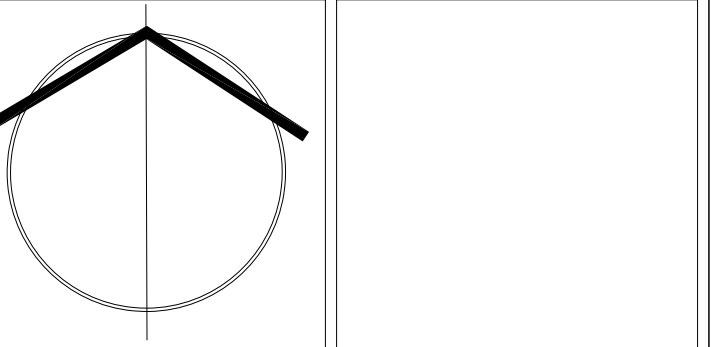
NOTE:  
-CHECK ALL QUANTITIES - REPORT ANY DISCREPANCIES TO THE LANDSCAPE ARCHITECT  
-THE QUANTITIES INDICATED ON THE PLAN SUPERSEDE THE TOTALS OF THE PLANT LIST  
-THE LAYOUT OF ALL PLANT MATERIAL IS TO BE APPROVED BY THE LANDSCAPE ARCHITECT PRIOR TO PLANTING.

GENERAL NOTES  
- VERIFY ALL DIMENSIONS.  
- DO NOT SCALE DRAWINGS.  
- REPORT ANY DISCREPANCIES, DISCOVERED ERRORS, OR OMISSIONS TO THE LANDSCAPE ARCHITECT BEFORE PROCEEDING.  
- IT IS ADVISED THAT CONTRACTORS CONTACT THE LANDSCAPE ARCHITECT PRIOR TO CONSTRUCTION TO ENSURE THE USE OF THE LATEST REVISED DRAWINGS.  
- DRAWINGS AND SPECIFICATIONS ARE THE PROPERTY OF THE LANDSCAPE ARCHITECT.



No.	DATE	REVISION	BY

It is the responsibility of the Contractor and/or Owner to ensure that the drawings with the latest revisions are used for construction.



**SBK** 5770 HURONTARIO STREET, SUITE 320  
MISSISSAUGA, ONTARIO, L4R 3Z5  
T: 416.695.4949 F: 905.712.3101  
WWW.STRYBOS.COM

**STRYBOS BARRON KING**  
LANDSCAPE ARCHITECTURE

PROJECT:  
**PROPOSED STACKED TOWNHOUSE DEVELOPEMNT**  
65-95 JOYMAR DRIVE  
MISSISSAUGA, ONTARIO

DRAWING TITLE:  
**RESTORATION PLAN**

SCALE:	AS SHOWN	PROJECT No.
DATE:	MAY 2019	19-5173
DRAWN BY:	SM	DRAWING No.
CHECKED BY:	MG	<b>L100</b>