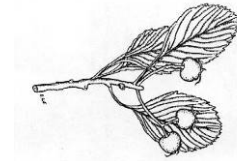


Arborist Report for Dixie Road, Wealthy Place and Primate Road project

Mississauga, Ontario



DAWhiteTreeCare.com

Tel: 416 431 2453, E-mail: DAWhiteTreeCare@GMail.com

D. Andrew White M. Sc. ISA Certified Arborist ON-0734. 78 Marcella St. Toronto, ON, M1G 1L2.

1. Introduction

The following is an arborist report for eight (8) existing residential lots, being 2103 Primate Road, 2107 Primate Road, 2113 Primate Road, 2119 Primate Road, 1351 Wealthy Place, 1357 Wealthy Place, 2122 Dixie Road and 2116 Dixie Road, in Mississauga Ontario. The purpose of this report was to ascertain the potential impacts of the proposed construction of a new development on the trees on the site and on adjacent properties.

This report was written for *MSLA*.

2. Methods

An on-site inspection was made on November 28, 2017. The sizes of individual trees were measured as diameter at breast height (DBH), breast height being 137 cm from ground level. The locations of these trees are indicated on the modified site plan (Fig. 1). From the data collected plant Condition Rating (CR), Location Rating (LR), Species Rating (SR), and minimum Tree Protection Zones (TPZ), were estimated.^{1,2}

It is necessary to protect all trees designated for preservation during both demolition and construction. This tree protection can be accomplished by protecting the said trees with *tree protection barriers*. The minimum tree protection zone (TPZ) radius is based on the diameter of the tree ($TPZ \approx 0.06_{m/cm} \times DBH_{cm}$). Tree barriers for road allowance areas would be composed of a 1.2 metres (4 ft.) high plastic safety fencing secured on metal T-bar supports as per city “framed hoarding” detail. Usually, tree protection barriers, not on road allowance, are to be “solid board hoarding” at 1.2 metres (4 ft.) high, and composed of plywood.³

TPZ signs must be added to TPZ barriers. Signage, as shown in typical detail drawing ‘Tree Protection Zone (TPZ) Signage NHF-401’, shall be installed on all sides of the TPZ barrier. The distance between individual signs shall not exceed 10 meters on any one side of the barrier. The phone number required to be printed on TPZ signage should be that of the appropriate District of the Tree Protection and Plan Review.

3. Discussion

There are plans to develop the site at Dixie Road, Wealthy Place and Primate Road. Within the proposed development there are approximately one hundred and twenty-five (125) existing trees. Several non-exempt trees (see below) would need to be injured or removed, in order to allow for the proposed development (Table 1, Fig. 1).

3.2 Roadside Trees

Removal

Two (2) city owned trees over 15cm DBH are proposed to be removed. (Table 1, Fig. 1 Trees #1, 21 & 39). These trees are in conflict with the proposed development.

Three (3) city owned trees over 50cm DBH are proposed for removal (Table 1, Fig. 1 Trees #38,40,43).

Preservation:

City trees #33, 34, 84 and 85 are to be protected by barriers during the demolition and construction work on the site. Refer to Tree Preservation/ Removals plan prepared by Marton Smith Landscape Architects (MSLA) for barrier detail and locations.

Any work required within TPZ must be completed using hand tools to avoid any potential damage of the root zone if roots of 5cm or greater are uncovered within area of construction must be cut sharply by a qualified Arborist

No	Tree Species	DBH	Comments
#33	Apple	18-20	Protect: Tree is over TPZ from proposed grade disturbances. Mitigation: The tree would be protected by combination of solid and framed fencing TPZ: 1.8 m (min) CR: 55% Canopy: +/- 4m TC: City
#34	Lilac tree	1-3	Protect: Tree is over TPZ from proposed grade disturbances. Mitigation: The tree would be protected by combination of solid and framed fencing barrier TPZ: 1.8 m (min) CR: 65% Canopy: +/- 8m TC: City
#84	Norway maple	88	Protect: Tree is over TPZ from proposed grade disturbances. Mitigation: The tree would be protected by framed Tree Protection fencing TPZ: 1.8 m (min) CR: 55%

			Canopy: +/- 11m TC: City
#85	Norway maple	92	Protect: Tree is over TPZ from proposed grade disturbances. Mitigation: The tree would be protected by framed Tree Protectionfencing TPZ: 1.8 m (min) CR: 55% Canopy: +/- 15m TC: City

3.3 Private Trees

Removal

Eighty-four (84) privately owned trees over 15cm DBH are proposed to be removed. (Table 1, Fig. 1 Trees #2-14, 16-20, 22-32, 34b-37, 41-42, 44-83, 86-106, 108-123).

Six (6) exempt privately owned trees (DBH less than 15cm) are also proposed for removal. Three (3) dead privately owned trees are also proposed to be removed (Table 1, Fig. 1 Trees #29,69 & 96). These trees are all in conflict with the proposed development.

3.4 Neighbouring Trees

One (1) neighbouring tree over 15cm DBH is proposed for removal due to conflict with the proposed development. (Table 1, Fig. 1 Tree #64).

4. Conclusion

In order to allow for the proposed construction at the Dixie Road, Wealthy Place and Primate Road project, several non-exempt trees would be removed or injured as follows.

Ninety-Three (84) privately owned trees over 15cm DBH are proposed for removal.

Two (2) city owned trees over 15cm DBH are proposed for removal.

Three (3) city owned trees over 50cm DBH are proposed for removal.

One (1) neighbouring tree over 15cm DBH is proposed for removal.

All of the trees to be retained would be protected by barriers during the demolition and construction work on the site as per the city tree protection detail. *MSLA Landscape Architects* has developed a detailed tree preservation plan and proposed landscape plan for the subject site.

D. Andrew White M. Sc.



Table #1. Tree number (No.), species, diameter at breast height (DBH), comments, Condition Rating (CR) and Tree Category.

No.	Tree Species	DBH (cm)	Location	CR (%)	TC	Recommendation
#1	blue spruce	29	1357 Wealthy Pl	70	City	To be Removed
#2	white spruce	29-32	1357 Wealthy Pl	60	private	To be Removed
#3	white spruce	58	1357 Wealthy Pl	65	private	To be Removed
#4	white spruce	62	1357 Wealthy Pl	70	private	To be Removed
#5	white cedar	10-14	1357 Wealthy Pl	70	private	To be Removed
#6	white spruce	27	1357 Wealthy Pl	65	private	To be Removed
#7	white spruce	28	1357 Wealthy Pl	70	private	To be Removed
#8	crab-apple	42	1357 Wealthy Pl	55	private	To be Removed
#9	white spruce	48	1357 Wealthy Pl	65	private	To be Removed
#10	pear tree	14-16	1357 Wealthy Pl	65	private	To be Removed
#11	mulberry	8-143	2116 Dixie Rd	70	private	To be Removed
#12+	white cedars	10-20	1357 Wealthy Pl	60-70	private	To be Removed
#13	white cedar	16-28	1357 Wealthy Pl	65	private	To be Removed
#14	white cedar	20-27	1357 Wealthy Pl	70	private	To be Removed
#15	white cedar	36	1357 Wealthy Pl	75	Neighbour	To be Preserved
#16	white cedar	32-34	1357 Wealthy Pl	70	private	To be Removed
#17	Manitoba maple	16-20	1357 Wealthy Pl	65	private	To be Removed
#18	mulberry	12-15	1357 Wealthy Pl	70	private	To be Removed
#19	mulberry	15-22	1357 Wealthy Pl	70	private	To be Removed
#20	white birch	54	1351 Wealthy Pl	65	private	To be Removed
#21	rowan tree	22	1351 Wealthy Pl	55	City (border)	To be Removed
#22	Norway maple	10-18	1351 Wealthy Pl	65	private	To be Removed
#23	honey locust	63	1351 Wealthy Pl	60	private	To be Removed
#24	red oak	69	1351 Wealthy Pl	65	private	To be Removed
#25	Norway maple	31	1351 Wealthy Pl	65	private	To be Removed
#26	Norway maple	52	1351 Wealthy Pl	60	private	To be Removed
#27	mulberry	28	1351 Wealthy Pl	65	private	To be Removed
#28	white cedar	29	1351 Wealthy Pl	55	private	To be Removed
#29	white cedar	15-22	1351 Wealthy Pl	0	private	To be Removed
#30	white cedar	14-18	1351 Wealthy Pl	50	private	To be Removed
#31	mulberry	30	1351 Wealthy Pl	60	private	To be Removed
#32	lilac	1-3	1351 Wealthy Pl	70	private	To be Removed
#33	apple	18-20	2103 Primate Rd	55	City	To be Preserved
#34	lilac tree	1-3	2103 Primate Rd	65	City	To be Preserved
#34b	cherry tree	15-17	2103 Primate Rd	55	private	To be Removed
#35	red oak	48	2103 Primate Rd	65	private	To be Removed
#36	Norway maple	43	2103 Primate Rd	65	private	To be Removed
#37	red oak	88	2103 Primate Rd	60	private	To be Removed

#38	Norway maple	51	2103 Primate Rd	60	City (border)	To be Removed
#39	crab-apple	15-27	2103 Primate Rd	55	city	To be Removed
#40	blue spruce	58	2107 Primate Rd	70	city	To be Removed
#41	blue spruce	44	2107 Primate Rd	70	private	To be Removed
#42	linden tree	78	2107 Primate Rd	60	private	To be Removed
#43	Norway maple	69	2113 Primate Rd	60	City (border)	To be Removed
#44	white cedar	12-18	2113 Primate Rd	65	private	To be Removed
#45	mulberry	30	2113 Primate Rd	60	private	To be Removed
#46	Norway maple	89	2113 Primate Rd	55	private	To be Removed
#47	Norway maple	31	2113 Primate Rd	60	private	To be Removed
#48	yew tree	15-32	2113 Primate Rd	70	private	To be Removed
#49	yew tree	34	2113 Primate Rd	65	private	To be Removed
#50	mulberry	10-14	2113 Primate Rd	70	private	To be Removed
#51	Norway maple	125	2113 Primate Rd	55	private	To be Removed
#52	cottonwood	115	2113 Primate Rd	60	private	To be Removed
#53	Norway maple	15	2113 Primate Rd	65	private	To be Removed
#54	Manitoba maple	15	2113 Primate Rd	65	private	To be Removed
#55	Manitoba maple	18	2113 Primate Rd	65	private	To be Removed
#56	mulberry	20	2113 Primate Rd	70	private	To be Removed
#57	mulberry	38	2113 Primate Rd	70	private	To be Removed
#58	mulberry	20	2113 Primate Rd	70	private	To be Removed
#59	mulberry	38	2113 Primate Rd	65	private	To be Removed
#60	mulberry	27	2113 Primate Rd	65	private	To be Removed
#61	mulberry	16	2119 Primate Rd	70	private	To be Removed
#62	Norway maple	83	2119 Primate Rd	60	private	To be Removed
#63	white spruce	30	2119 Primate Rd	55	private	To be Removed
#64	mulberry	26	2119 Primate Rd	70	Neighbour (border)	To be Removed
#65	white cedar	15	2119 Primate Rd	60	private	To be Removed
#66	white cedar	18	2119 Primate Rd	65	private	To be Removed
#67	mulberry	34	2119 Primate Rd	65	private	To be Removed
#68	mulberry	30	2119 Primate Rd	20	private	To be Removed
#69	green ash	40	2119 Primate Rd	0	private	To be Removed
#70	Norway maple	72	2119 Primate Rd	65	private	To be Removed
#71	Norway maple	86	2119 Primate Rd	70	private	To be Removed
#72	Scots pine	15-19	2118 Dixie Rd	50	private	To be Removed
#73	Norway maple	75	2118 Dixie Rd	55	private	To be Removed
#74	Norway maple	86	2118 Dixie Rd	60	Private	To be Removed
#75	Norway maple	87	2118 Dixie Rd	60	private	To be Removed
#76	mulberry	20	2118 Dixie Rd	70	private	To be Removed
#77	mulberry	22	2118 Dixie Rd	70	private	To be Removed
#78	blue spruce	63	2118 Dixie Rd	60	private	To be Removed
#79	blue spruce	34-38	2118 Dixie Rd	60	private	To be Removed

#80	mulberry	14-18	2118 Dixie Rd	70	private	To be Removed
#81+	stumps	NA	2118 Dixie Rd	0	private	To be Removed
#82+	white cedars	12-26	2118 Dixie Rd	65-70	private	To be Removed
#83	Siberian elm	20-33	2118 Dixie Rd	60	private	To be Removed
#84	Norway maple	88	2118 Dixie Rd	55	city	<u>To be Preserved</u>
#85	Norway maple	92	2118 Dixie Rd	55	city	<u>To be Preserved</u>
#86	Norway maple	54	2118 Dixie Rd	60	private	To be Removed
#87	Norway spruce	72	2118 Dixie Rd	60	private	To be Removed
#88	Norway spruce	48	2118 Dixie Rd	60	private	To be Removed
#89	Norway spruce	33	2118 Dixie Rd	60	private	To be Removed
#90	Norway spruce	42	2118 Dixie Rd	60	private	To be Removed
#91	Norway spruce	31	2118 Dixie Rd	60	private	To be Removed
#92	Norway spruce	22-32	2118 Dixie Rd	55	private	To be Removed
#93	Norway spruce	58	2118 Dixie Rd	50	private	To be Removed
#94	Norway spruce	48	2118 Dixie Rd	55	private	To be Removed
#95	Norway spruce	44-64	2118 Dixie Rd	60	private	To be Removed
#96	Norway spruce	33	2118 Dixie Rd	0	private	To be Removed
#97	Norway spruce	49	2118 Dixie Rd	60	private	To be Removed
#98	Norway spruce	14-68	2118 Dixie Rd	60	private	To be Removed
#99	Norway maple	32-66	2118 Dixie Rd	55	private	To be Removed
#100	Norway maple	52-54	2118 Dixie Rd	60	private	To be Removed
#101	red oak	74	2118 Dixie Rd	65	private	To be Removed
#102	mulberry	38	2118 Dixie Rd	65	private	To be Removed
#103	Norway maple	56	2118 Dixie Rd	60	private	To be Removed
#104	Norway maple	54	2118 Dixie Rd	60	private	To be Removed
#105	Norway maple	42	2118 Dixie Rd	55	private	To be Removed
#106	Norway maple	15-34	2118 Dixie Rd	50	private	To be Removed
#107	stump	NA	2122 Dixie Rd	0	city	To be Removed
#108-109	apple trees	18-20	2122 Dixie Rd	55-60	private	To be Removed
#110-123	apple trees	12-16	2122 Dixie Rd	55-60	private	To be Removed
#124	Norway maple	8-10	N neighbour	65	neighbour	To Remain
#125	Norway maple	32	NW neighbour	65	neighbour	To Remain

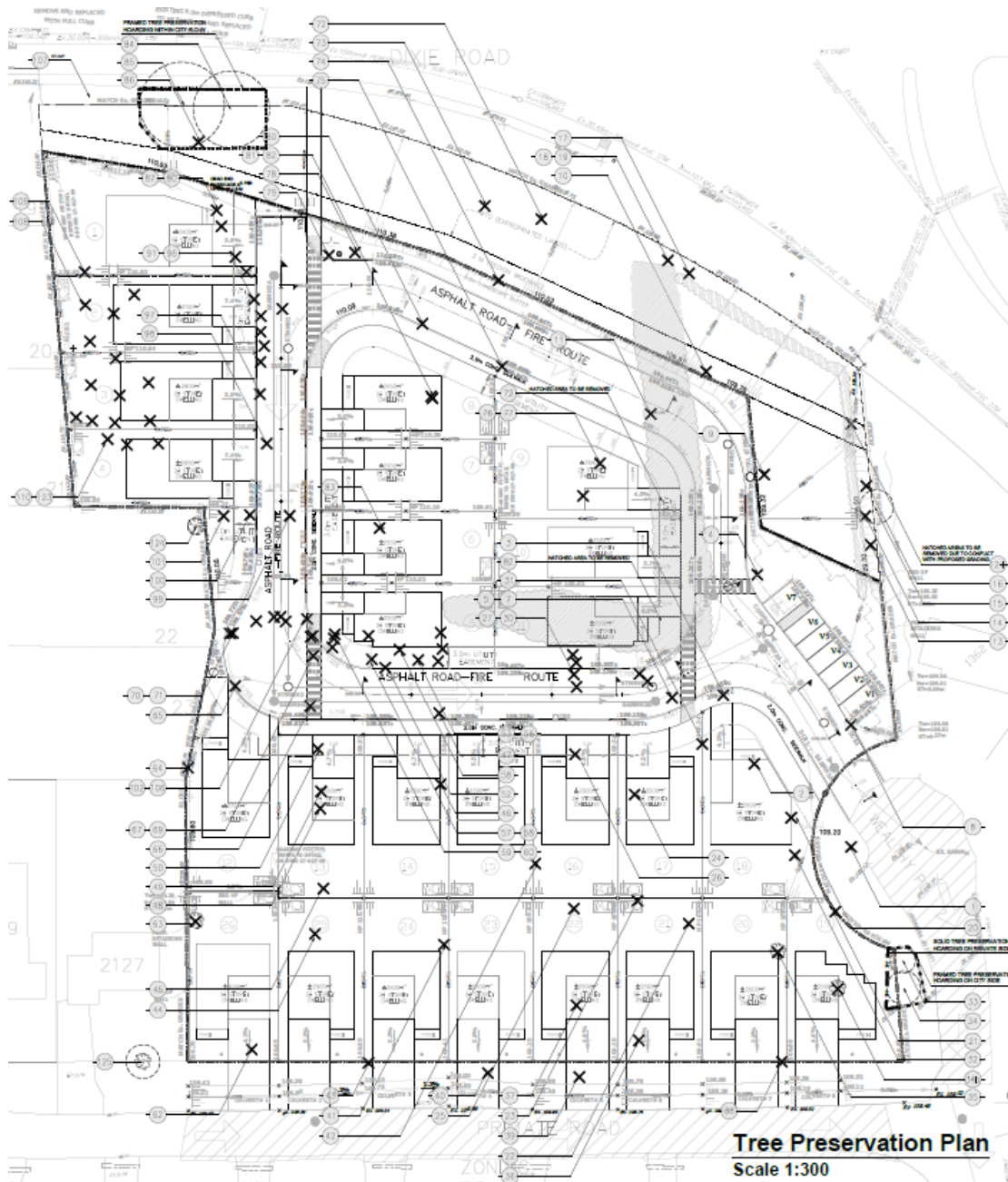


Figure #1: Tree locations on the Dixie Road, Wealthy Place and Primate Road project development site. Refer to Tree Preservation Plan (L1-01) prepared by MSLA.

4. Photographs



Photograph #1: Tree located on east side of the subject site



Photograph #1: Trees located on east side of the subject site



Photograph #1: Trees located on North-west side of the subject site



Photograph #1: Trees located on North-west side of the subject site



Photograph #1: Trees located on South side of the subject site



Photograph #1: Trees located on South side of the subject site



Photograph #1: Trees located on South side of the subject site



Photograph #1: Trees located on South-East side of the subject site



Photograph #1: Trees located on South-East side of the subject site



Photograph #1: Trees located on South-East (road) side of the subject site



Photograph #1: Trees located on South-West side of the subject site



Photograph #1: Trees located on South-West side of the subject site



Photograph #1: Trees located on South-West side of the subject site



Photograph #1: Trees located on West (road) side of the subject site

5. References

- 1- Council of Tree Landscape Appraisers. 2000. Guide for Plant Appraisal. 9th Edition. International Society of Arboriculture.
- 2- International Society of Arboriculture of Ontario. 1998. Ontario Supplement to Guide for Plant Appraisal 8th Edition. Ontario Chapter, International Society of Arboriculture.

