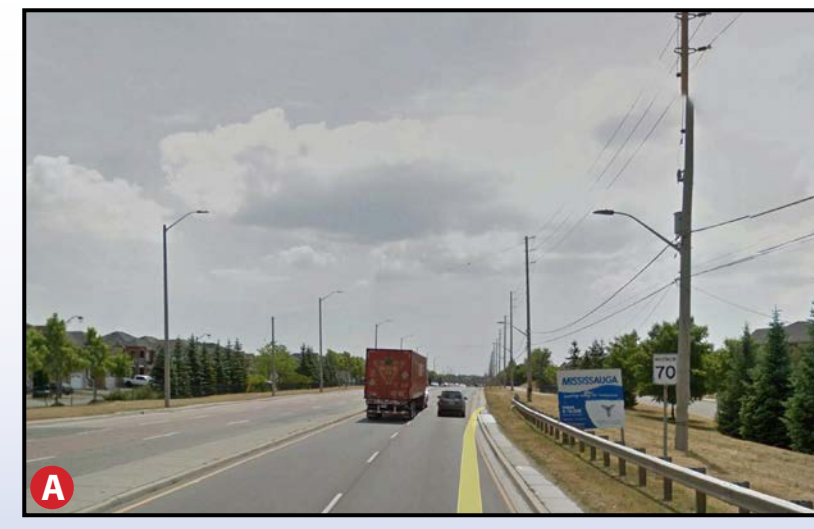


EXISTING CONDITIONS



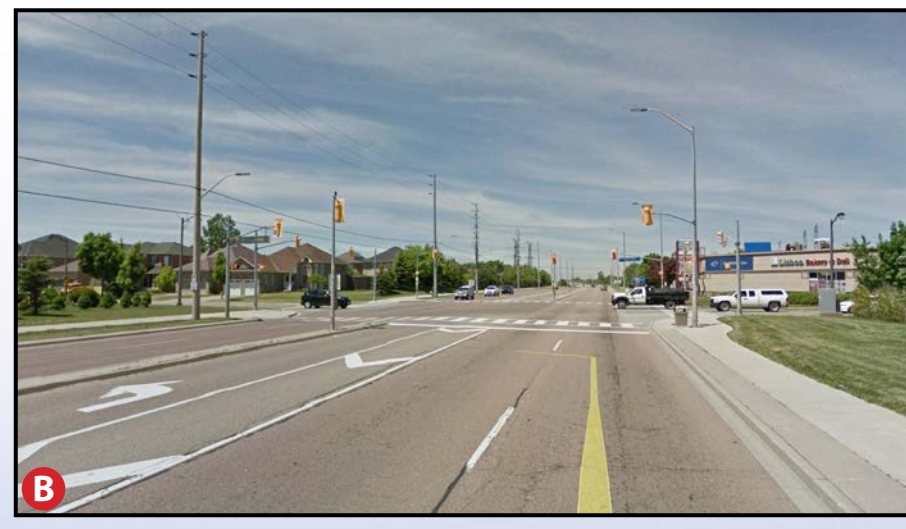
EXISTING CONDITIONS - HIGHWAY NO. 407



EXISTING CONDITIONS - MISSISSAUGA WELCOME SIGN



EXISTING CONDITIONS - MAVIS MID BLOCK



EXISTING CONDITIONS - TWAIN AVENUE AND KNOTTY PINE GROVE



EXISTING CONDITIONS - ENVOY AND KAISER DRIVE



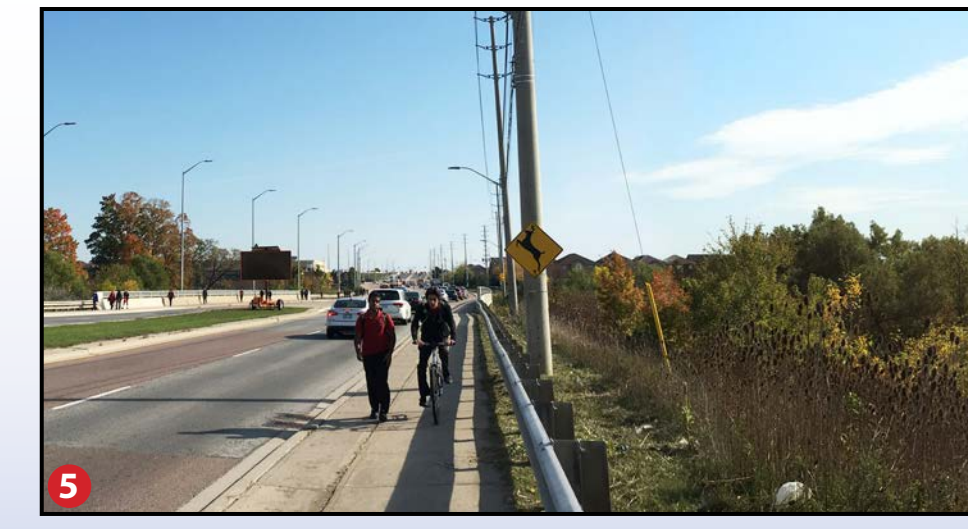
EXISTING CONDITIONS - DERRY ROAD WEST



EXISTING CONDITIONS - DERRY ROAD WEST



EXISTING CONDITIONS - NOVO STAR DRIVE / CRAWFORD MILL AVENUE



EXISTING CONDITIONS - FLETCHER'S CREEK



EXISTING CONDITIONS - COURTNEY PARK DRIVE WEST / SOMBRERO WAY

- LEGEND
- PROPOSED TREE
 - EXISTING TREE
 - NEW LANDSCAPE / STREETSCAPE OPPORTUNITIES
 - EXISTING PUBLIC/OPEN SPACE
 - CREEK / POND
 - MULTI-USE TRAIL
 - SIDEWALK / PATH

SLOPE STABILIZATION

- Berms and slopes around bridge structures and along the transportation corridor vegetated with colony forming / suckering and deep rooted plant species to assist with slope stabilization.
- Native plant species reduce erosion, improve slope stability, increase infiltration and reduce overland flow.
- Low maintenance, salt tolerant, hardy plants are organized into large masses to promote dense colony formation and enhance visual quality.
- Slopes are highly visible; aesthetic plantings should be a priority.

FEATURE PLANTING OPPORTUNITY

- Enhancement plantings using columnar trees with distinctive color and form in character with the rest of the corridor.

MULTI-USE TRAIL

- Active transportation is encouraged through the provision of a safe, comfortable and well-connected multi-use trail.
- Tying into the existing cycling network, a multi-use trail provides a strong emphasis on safe passage for cyclists and pedestrians.

INTERSECTION PLANTING

- Columnar trees define intersections and give a consistent character to the corridor.
- If desired, low-maintenance, colourful plantings may be included such as shrubs, grasses and perennials with seasonal interest and high ecological value.
- Intersection planting is positioned to delineate private/public spaces.

PROTECTION OF EXISTING VEGETATION

- Limit the size of the construction area to only what is needed and retain existing vegetation wherever possible.
- Protect and preserve all trees and vegetation located on adjacent properties and do not permit any vegetation clearing, or changes to grades beyond the established work area.
- Establish a Tree Protection Zone through the installation of tree protection fencing which follows standard arboricultural procedures.
- Carefully clear vegetation and trees designated for removal.

ENHANCED INTERSECTION OPPORTUNITIES

- Enhanced intersections can become well-used public spaces which provide amenities such as seating, sidewalks, trails and key plantings, where appropriate.
- Serve as aesthetic gateways to communities and landmarks for pedestrians, cyclists and motorists.
- Create four-season interest with salt-tolerant pollinator species, including nectar and host plants.
- Turf, paths and seating with columnar and canopy trees provides additional amenity space.
- Area is enhanced with trees and shrub beds featuring native species that provide benefits to birds and pollinators.

ENHANCED INTERSECTION/LANDSCAPE FEATURE AREA

- Columnar character trees provide a consistent visual theme through the neighbourhood.
- Seating areas at corners provide resting space along the multi-use trail.
- Coloured paving can provide additional enhancement and visibility for site users.

NATURALIZED LANDSCAPE PLANTING AND PUBLIC ART OPPORTUNITIES

- Plant columnar character trees in groups at intersection. Choose native species with all-season interest, strong fall colours and salt-tolerance where as appropriate.
- Design for the widest variety of users possible, incorporating plant materials with changing foliage colour, decorative bark and blossoms for seasonal visual, textural and aromatic interest.
- Consider the driver, cyclist and pedestrian experiences and design planting to appeal to a variety of users.
- Enhance transit stop and multi-use trail through seating areas and amenity spaces.

FEATURE OPPORTUNITY

- Plant columnar character trees in groups at intersection. Choose native species with all-season interest, strong fall colours and salt-tolerance where as appropriate.
- Design for the widest variety of users possible, incorporating plant materials with changing foliage colour, decorative bark and blossoms for seasonal visual, textural and aromatic interest.
- Consider the driver, cyclist and pedestrian experiences and design planting to appeal to a variety of users.
- Enhance transit stop and multi-use trail through seating areas and amenity spaces.

PRECEDENTS AND OPPORTUNITIES



A COMBINATION OF DECORATIVE AND NATURALIZED PLANTING INCLUDING TREES, SHRUBS AND ORNAMENTAL GRASSES CAN PROVIDE ALL-SEASON INTEREST AND ENHANCE VIEWS, VISTAS, INTERSECTIONS AND KEY AREAS.



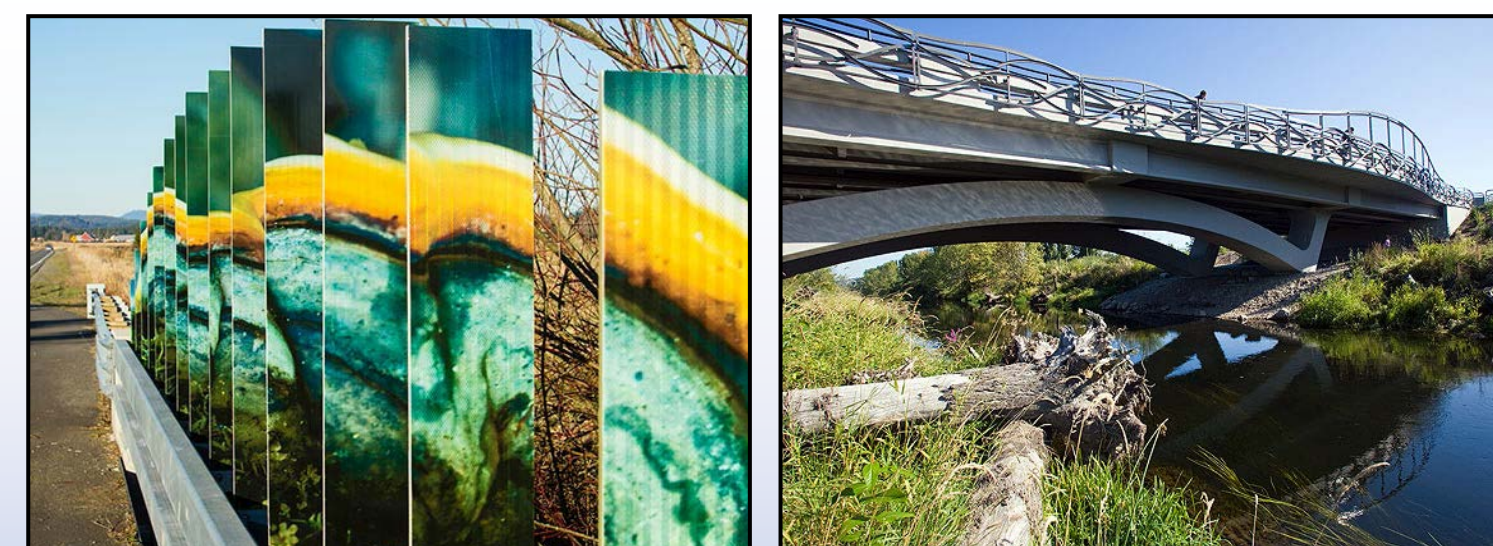
COLUMNAR TREES WITH STRONG FORM AND COLOUR CAN BE COMBINED WITH OTHER DISTINCTIVE PLANTINGS AND USED TO ACCENT INTERSECTIONS AND KEY AREAS, CREATING A DEFINING VISUAL THEME FOR THE STREET.



ENHANCED INTERSECTIONS CAN FEATURE AMENITY ZONES, INCLUDING SEATING AREAS, COLOURFUL PLANTING AND FEATURE GARDENS ADDING COMFORT AND VALUE TO THE PUBLIC REALM. THESE CAN BE CLEARLY MARKED BY VARIED MATERIALS, SUCH AS UNIT PAVERS OR COLOURED CONCRETE.



SMALL SEATING AREAS CAN PROVIDE RESTING AREAS AND ENHANCE THE PUBLIC REALM.



INTEGRATED PUBLIC ART CAN FRAME AND ENHANCE FLETCHER'S CREEK CROSSING. Left: King County Bridge, Washington (USA). Artist: Leo Saul Berk. Right: York Bridge, Redmond, Washington (USA). Artist: Cliff Garten



FEATURED LANDSCAPE OPPORTUNITIES MAY INCLUDE A VARIETY OF ELEMENTS, INCLUDING HARDSCAPES AND AESTHETICALLY PLEASING GREENERY TO FRAME AND ENHANCE VIEWS. LOCAL CONTEXT AND THE COMMUNITY IDENTITY SHOULD PLAY A VITAL ROLE IN SELECTING APPROPRIATE ELEMENTS AND PLANTINGS.

NOTE: FURTHER REFINEMENT TO THE LANDSCAPE PLAN WILL BE UNDERTAKEN BASED ON THE UTILITY RELOCATION PLAN

