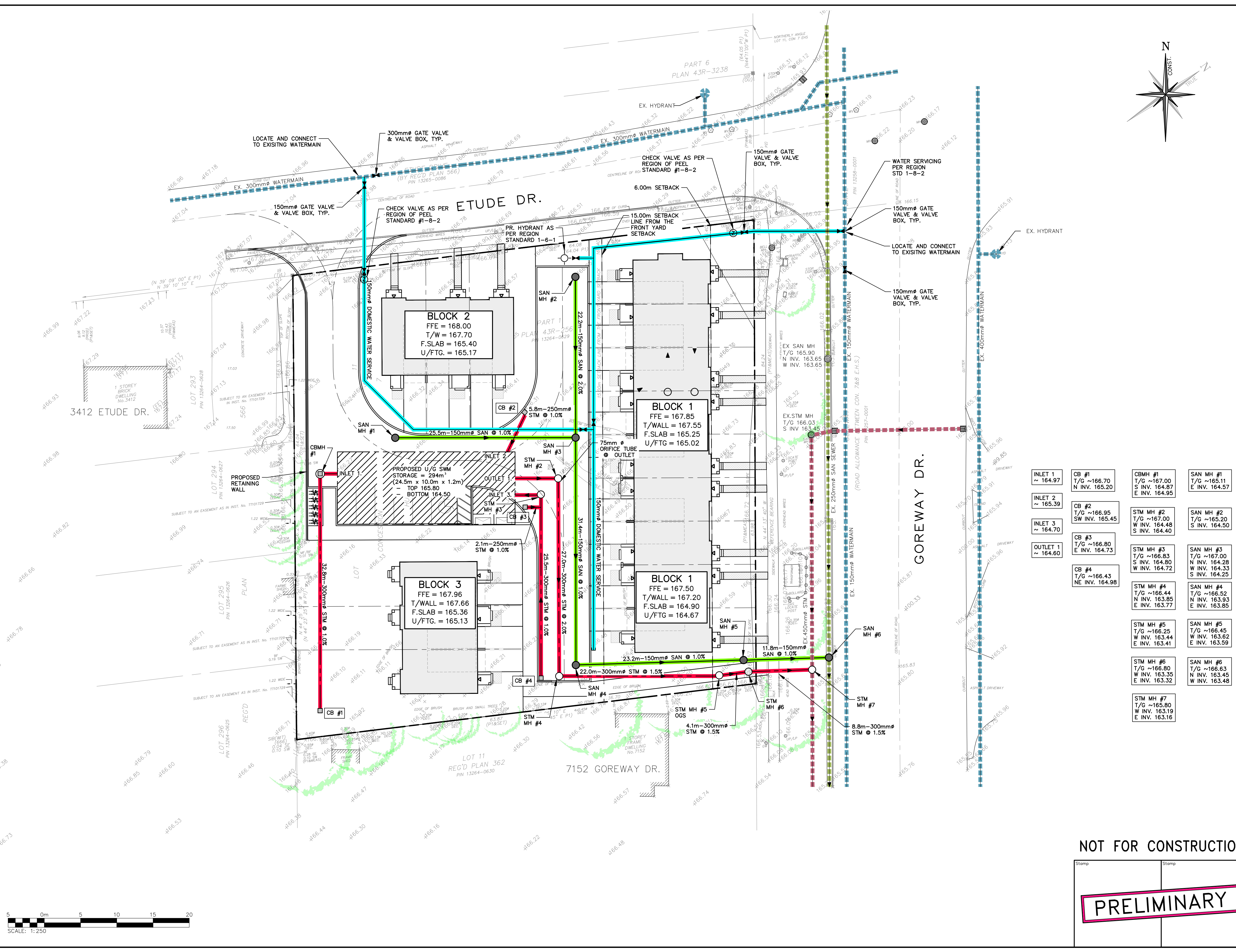


**LEGEND**

- PROPERTY LINE
- EXISTING WATERMAIN & GATE VALVE
- EXISTING STORM SEWER & MANHOLE
- EXISTING SINGLE / DOUBLE CATCHBASIN
- EXISTING SANITARY SEWER & MANHOLE
- PROPOSED WATERMAIN & GATE VALVE
- PROPOSED WATER SERVICE LATERAL (XXmm)
- PROPOSED FIRE HYDRANT & GATE VALVE
- PROPOSED CHECK VALVE IN CHAMBER
- PROPOSED STORM SEWER & MANHOLE
- PROPOSED SINGLE / DOUBLE CATCHBASIN
- PROPOSED SANITARY SEWER & MANHOLE



INLET 1 ~ 164.97	CB #1 T/G ~166.70 N INV. 165.20	CBMH #1 T/G ~167.00 S INV. 164.87 E INV. 164.95	SAN MH #1 T/G ~165.11 E INV. 164.57
INLET 2 ~ 165.39	CB #2 T/G ~166.95 SW INV. 165.45	STM MH #2 T/G ~167.00 W INV. 164.48 S INV. 164.40	SAN MH #2 T/G ~165.20 S INV. 164.50
INLET 3 ~ 164.70	CB #3 T/G ~166.80 E INV. 164.73	STM MH #3 T/G ~166.83 S INV. 164.80 W INV. 164.72	SAN MH #3 T/G ~167.00 N INV. 164.28 W INV. 164.33 S INV. 164.25
OUTLET 1 ~ 164.60	CB #4 T/G ~166.43 NE INV. 164.98	STM MH #4 T/G ~166.44 N INV. 163.85 E INV. 163.77	SAN MH #4 T/G ~166.52 N INV. 163.93 E INV. 163.85
		STM MH #5 T/G ~166.25 W INV. 163.44 E INV. 163.41	SAN MH #5 T/G ~166.45 T/G ~166.45 W INV. 163.62 E INV. 163.59
		STM MH #6 T/G ~166.80 W INV. 163.35 E INV. 163.32	SAN MH #6 T/G ~166.63 N INV. 163.45 W INV. 163.48
		STM MH #7 T/G ~165.80 W INV. 163.19 E INV. 163.16	

3	ISSUED FOR 4TH SUBMISSION ZBA/OPA	2019/OCT/30
2	ISSUED FOR 3RD SUBMISSION ZBA/OPA	2019/SEPT/30
1	ISSUED FOR 2ND SUBMISSION ZBA/OPA	2019/AUG/30
0	ISSUED FOR ZBA/OPA	2017/DEC/15

**ELEVATION NOTE:**  
ELEVATIONS SHOWN ON THIS PLAN ARE DERIVED FROM THE CANADIAN GEODETIC DATUM BENCHMARK No. 448  
ELEVATION = 162.55m

**SURVEY NOTES:**  
SURVEY COMPLETED BY J.H. GELBLOOM SURVEYING LIMITED. (2017/MAY/08)  
PROJECT No.: 17-089  
BEARINGS ARE UTM GRID, DERIVED FROM RTN OBSERVATIONS  
UTM ZONE 17, NAD83 (GRS) (2011.0)  
DISTANCES ARE GROUND AND CAN BE CONVERTED TO GRID BY MULTIPLYING BY THE COMBINED SCALE FACTOR OF 0.9996781

**SITE PLAN NOTES:**  
DESIGN ELEMENTS ARE BASED ON SITE PLAN BY JARDIN DESIGN GROUP INC.  
DRAWING No.: A-01, REV.2 (2019/APR/11)  
PROJECT No.: 17-18

**DRAWING NOTES:**  
THIS DRAWING IS THE EXCLUSIVE PROPERTY OF C.F. CROZIER & ASSOCIATES INC. AND THE REPRODUCTION OF ANY PART OF IT WITHOUT PRIOR WRITTEN CONSENT OF THIS OFFICE IS STRICTLY PROHIBITED.  
THE CONTRACTOR SHALL VERIFY ALL DIMENSIONS, LEVELS, AND DATUMS ON SITE AND REPORT ANY DISCREPANCIES OR OMISSIONS TO THIS OFFICE PRIOR TO CONSTRUCTION.  
THIS DRAWING IS TO BE READ AND UNDERSTOOD IN CONJUNCTION WITH ALL OTHER PLANS AND DOCUMENTS APPLICABLE TO THIS PROJECT. DO NOT SCALE THIS DRAWING.  
ALL EXISTING UNDERGROUND UTILITIES TO BE VERIFIED IN THE FIELD BY THE CONTRACTOR PRIOR TO CONSTRUCTION.  
EXISTING INVERTS FROM AS-BUILT DRAWINGS 2006S-D, 40529-D

Project  
**7170 GOREWAY DRIVE**  
CITY OF MISSISSAUGA

Drawing  
**PRELIMINARY**  
SITE SERVICING PLAN

NOT FOR CONSTRUCTION

Stamp  
**PRELIMINARY**

**CROZIER & ASSOCIATES**  
Consulting Engineers

2800 HIGH POINT DRIVE  
SUITE 100  
MILTON, ON L9T 6P4  
905 875 0026 T  
905 875 4915 F  
WWW.CFCROZIER.CA

Drawn: J.K. Design: J.K. Project No.: **1346-4573**  
Check: S.C.S. Check: L.T. Scale: 1:250 Dwg.: **FIG. 1**

