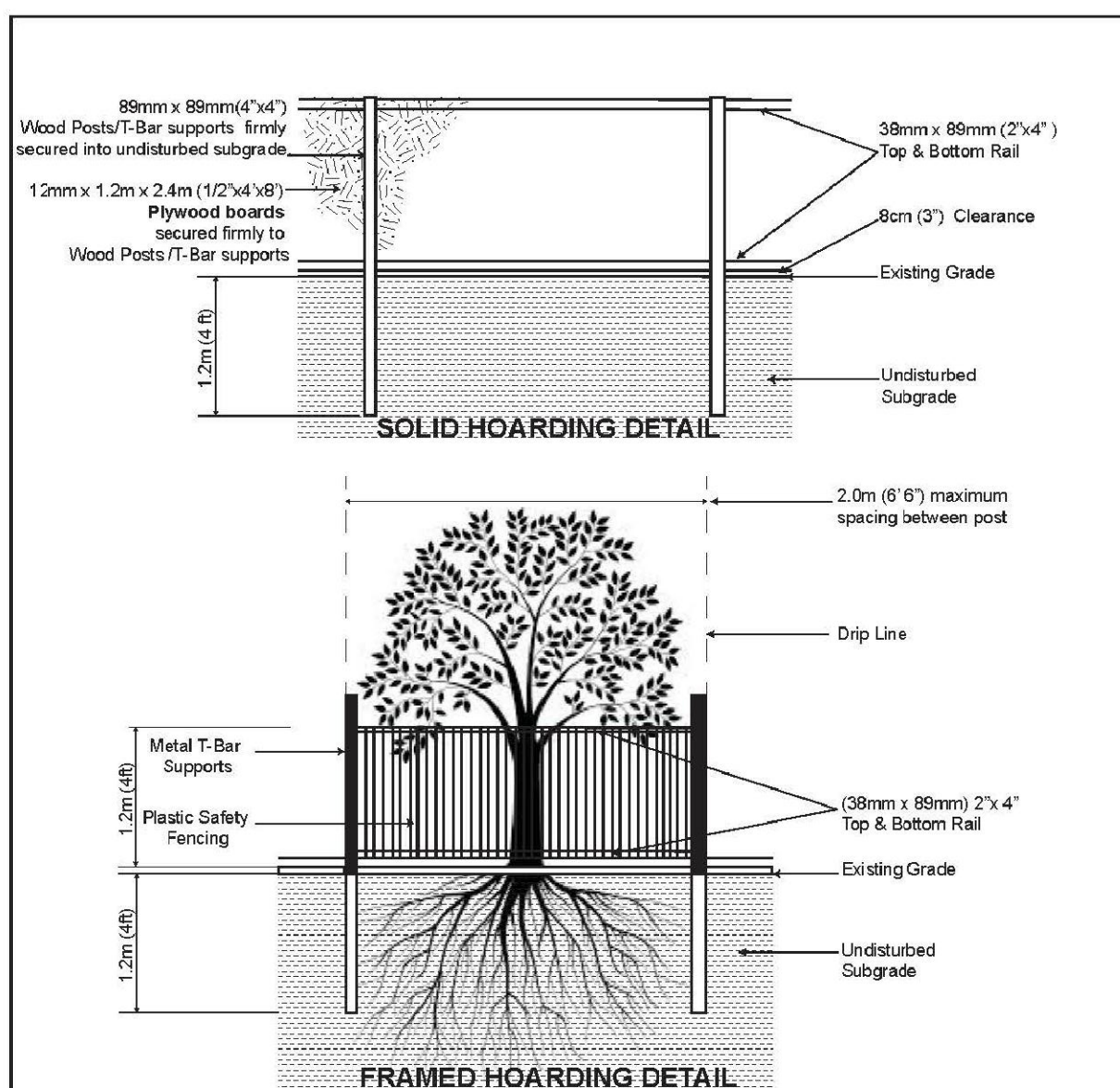


EXISTING TREE INVENTORY

Tag No.	Tree Species	Diameter (cm)	Crown Dia. (m)	Health	Structure	Comments	Action	Min. TPZ (m)	Tag No.
225	WEeping WILLOW	98.9	19.0	GOOD	BROAD FORM	DEAD IN STEM, BROKEN LIMBS THROUGHOUT, EPICORMIC SHOOTS THROUGHOUT	REMOVE	4.8	225
226	COLORADO BLUE SPRUCE	38.0	6.0	GOOD	GOOD FORM	BRANCHING TO GRADE	REMOVE	2.4	226
227	COLORADO BLUE SPRUCE	39.0	6.0	GOOD	GOOD FORM	BRANCHING TO GRADE	REMOVE	2.4	227
228	SILVER MAPLE	30-74	14.0	FAIR	ASYMMETRICAL FORM, NARROW FORM, CROWDING BY ADJACENT TREE, EPICORMIC BRANCHING		REMOVE	4.8	228
229	SILVER MAPLE	11-74	18.0	FAIR	MULTI-STEMMED	ASYMMETRICAL FORM, CROWDING BY ADJACENT TREE, LOW BRANCHING, SOME DEADWOOD AND DIEBACK IN CROWN	REMOVE	4.8	229
230	WEeping WILLOW	71.0	16.0	POOR	DOUBLE STEM	DEADWOOD AND DIEBACK THROUGHOUT	REMOVE	4.8	230
231	SCOTS PINE	20.0	4.0	GOOD	HIGH CROWN	DIEBACK ON LOWER BRANCHES	REMOVE	1.8	231
232	HAWTHORN	16.0	7.0	POOR	ONE SIDED FORM	CROWDING BY ADJACENT TREE, DIEBACK ON LOWER BRANCHES	REMOVE	1.8	232
233	SHAGBARK HICKORY	23.0	6.0	GOOD	NARROW FORM	CROWDING BY ADJACENT TREE, MINOR DIEBACK ON LOWER BRANCHES	REMOVE	1.8	233
234	WEeping WILLOW	76.0	20.0	GOOD	BROAD FORM	DOUBLE LEADERS, EPICORMIC GROWTH AND DIEBACK ON LOWER BRANCHES, SOME DEADWOOD AND DIEBACK IN CROWN	REMOVE	4.8	234
235	WHITE SPRUCE	46.0	10.0	GOOD	GOOD FORM	BRANCHING TO GRADE	REMOVE	3	235
236	WHITE CEDAR	21.0	6.0	GOOD	DOUBLE STEM	ONE SIDED FORM, PART OF CEDAR GROUPING	REMOVE	1.8	236
237	WHITE CEDAR	16.0	5.0	GOOD	MULTI-STEMMED	NARROW FORM, PART OF CEDAR GROUPING	REMOVE	1.8	237
238	CRAWFPLE	21.0	6.0	FAIR	MULTI-STEMMED	ASYMMETRICAL FORM, CROWDING BY ADJACENT TREE, DIEBACK AND SUCKER GROWTH ON LOWER BRANCHES	REMOVE	1.8	238
239	JUNIPER	26.0	4.0	GOOD	GOOD FORM	DIEBACK ON LOWER BRANCHES	REMOVE	1.8	239
240	HAWTHORN	23.0	6.0	POOR	MULTI-STEMMED	DIEBACK THROUGHOUT	REMOVE	1.8	240
241	HAWTHORN	23.0	6.0	POOR	MULTI-STEMMED	ONE SIDED FORM, CROWDING BY ADJACENT TREE, DECLINING	REMOVE	1.8	241
242	NORWAY MAPLE	16.0	5.0	FAIR	NARROW FORM	HIGH CROWN, CROWDING BY ADJACENT TREE	PRESERVE	1.8	242
243	BUR OAK	29.0	7.0	FAIR	ONE SIDED FORM	HIGH CROWN, SOME DIEBACK IN CROWN	PRESERVE	1.8	243
244	SHAGBARK HICKORY	17.0	7.0	GOOD	ONE SIDED FORM	CROWDING BY ADJACENT TREE	PRESERVE	1.8	244
245	HAWTHORN	19.0	6.0	POOR	ONE SIDED FORM	CROWDING BY ADJACENT TREE, DIEBACK THROUGHOUT	REMOVE	1.8	245
246	ASH	32.0	8.0	DEAD	DEAD		REMOVE	2.4	246
247	ASH	35.0	8.0	DEAD	DEAD		REMOVE	2.4	247
248	ASH	48.0	9.0	DEAD	DEAD		REMOVE	3	248
249	BUR OAK	22.0	6.0	POOR	ONE SIDED FORM	DECLINING	REMOVE	1.8	249
250	ASH	21.0	6.0	FAIR	ONE SIDED FORM	CROWDING BY ADJACENT TREE, HIGH CROWN, DIEBACK ON LOWER BRANCHES	REMOVE	1.8	250
251	ASH	25.0	8.0	DEAD	DEAD		REMOVE	1.8	251
252	ASH	25.0	8.0	DEAD	DEAD		REMOVE	1.8	252
253	HAWTHORN	30.0	8.0	POOR	MULTI-STEMMED	FAILED LIMBS, DECLINING	REMOVE	2.4	253
254	HAWTHORN	24.0	5.0	FAIR	ONE SIDED FORM	CROWDING BY ADJACENT TREE, SOME DIEBACK THROUGHOUT	REMOVE	1.8	254
255	HAWTHORN	23.0	7.0	POOR	MULTI-STEMMED	ONE SIDED FORM, CROWDING BY ADJACENT TREE, DIEBACK THROUGHOUT	REMOVE	1.8	255
256	HAWTHORN	16.0	6.0	POOR	ONE SIDED FORM	SUBORDINATED BY ADJACENT TREE	REMOVE	1.8	256
257	HAWTHORN	25.0	4.0	POOR	IRREGULAR FORM	DECLINING	REMOVE	1.8	257
258	BUR OAK	30.0	12.0	FAIR	MULTI-STEMMED	UPPER CROWN SERIOUSLY ENTANGLED WITH WILD GRAPE VINES	REMOVE	3.6	258
259	BUR OAK	59.0	13.0	FAIR	BROAD FORM	RETAINING WALL ADJACENT TO EAST SIDE OF STEM, DIEBACK ON LOWER BRANCHES, SOME DEADWOOD AND EPICORMIC SHOOTS THROUGHOUT CROWN	PRESERVE	3.6	259
260	BUR OAK	30.0	6.0	FAIR	ONE SIDED FORM	HIGH CROWN, CROWDING BY ADJACENT TREE, DIEBACK ON LOWER BRANCHES	REMOVE	2.4	260
261	HAWTHORN	23.0	6.0	FAIR	ONE SIDED FORM	CROWDING BY ADJACENT TREE	REMOVE	1.8	261
262	BUR OAK	30.0	6.0	FAIR	NARROW FORM	HIGH CROWN, CROWDING BY ADJACENT TREE	REMOVE	2.4	262
263	BASSWOOD	31.0	8.0	POOR	IRREGULAR FORM	DECLINING	REMOVE	2.4	263
264	HAWTHORN	17.0	7.0	FAIR	ASYMMETRICAL FORM	CROWDING BY ADJACENT TREE, DIEBACK ON LOWER BRANCHES	REMOVE	1.8	264
265	BASSWOOD	19.0	7.0	GOOD	MULTI-STEMMED	MINOR DIEBACK ON LOWER BRANCHES	REMOVE	1.8	265
266	BASSWOOD	23.0	8.0	GOOD	MULTI-STEMMED	DENSE CLUSTER OF SEVERAL STEMS, CROWDING BY ADJACENT TREE	REMOVE	1.8	266
267	BASSWOOD	16.0	6.0	GOOD	MULTI-STEMMED	BROAD FORM, CROWDING BY ADJACENT TREE	REMOVE	1.8	267
268	AUSTRIAN PINE	38.0	9.0	GOOD	GOOD FORM	CROWDING BY ADJACENT TREE	REMOVE	2.4	268
269	AUSTRIAN PINE	64.0	9.0	GOOD	DOUBLE STEM	STEMS FUSED TOGETHER	REMOVE	4.2	269
270	AUSTRIAN PINE	40.0	8.0	GOOD	DOUBLE LEADER	ELEVATED CROWN	REMOVE	2.4	270
271	AUSTRIAN PINE	41.0	8.0	GOOD	GOOD FORM	GIRDLED ROOTS	REMOVE	3	271
272	WEeping WILLOW	30.0	14.0	GOOD	MULTI-STEMMED	BROAD FORM, BROKEN LIMBS IN CROWN, NEW GROWTH THROUGHOUT	REMOVE	2.4	272
273	WEeping WILLOW	34.0	14.0	GOOD	MULTI-STEMMED	BROAD FORM, BROKEN LIMBS IN CROWN, NEW GROWTH THROUGHOUT	REMOVE	2.4	273
274	WEeping WILLOW	102.0	16.0	POOR	DOUBLE STEM	ONE STEM FAILED	REMOVE	6.12	274
275	WEeping WILLOW	101.0	15.0	FAIR	ONE SIDED FORM	SEVERAL BROKEN LIMBS AND BRANCHES, EPICORMIC SHOOTS THROUGHOUT	REMOVE	6.06	275
276	SILVER MAPLE	44.0	13.0	GOOD	GOOD FORM	DIEBACK ON LOWER BRANCHES, MINOR DECAY IN CROWN	REMOVE	3	276
277	SILVER MAPLE	65.0	14.0	POOR	MULTI-STEMMED	MATURE, DECLINING CROWN WITH EPICORMIC GROWTH THROUGHOUT	REMOVE	4.2	277
278	COLORADO BLUE SPRUCE	35.0	6.0	GOOD	GOOD FORM	MINOR DIEBACK ON LOWER BRANCHES	REMOVE	2.4	278
279	COLORADO BLUE SPRUCE	30.0	6.0	FAIR	GOOD FORM	TWIG TIP DIEBACK THROUGHOUT	REMOVE	2.4	279
280	SCOTS PINE	30.0	7.0	GOOD	ONE SIDED FORM	CROWDING BY ADJACENT TREE	REMOVE	2.4	280
281	WHITE CEDAR	25.0	6.0	GOOD	MULTI-STEMMED	CROWDING BY ADJACENT TREE	REMOVE	1.8	281
282	SCOTS PINE	26.0	6.0	GOOD	NARROW FORM	HIGH CROWN, CROWDING BY ADJACENT TREE	REMOVE	1.8	282
283	WHITE PINE	32.0	6.0	GOOD	ONE SIDED FORM	HIGH CROWN, CROWDING BY ADJACENT TREE	REMOVE	2.4	283
284	WHITE CEDAR	19.0	5.0	GOOD	DOUBLE STEM	ONE SIDED FORM, CROWDING BY ADJACENT TREE	REMOVE	1.8	284
285	SCOTS PINE	26.0	8.0	GOOD	IRREGULAR FORM	CROWDING BY ADJACENT TREE, DIEBACK ON LOWER BRANCHES	REMOVE	1.8	285
286	WHITE CEDAR	25.0	4.0	GOOD	ONE SIDED FORM	CROWDING BY ADJACENT TREE	REMOVE	1.8	286
287	WHITE CEDAR	26.0	6.0	GOOD	MULTI-STEMMED	ONE SIDED FORM, CROWDING BY ADJACENT TREE	REMOVE	1.8	287
288	WHITE CEDAR	16.0	4.0	GOOD	DOUBLE STEM	ONE SIDED FORM, CROWDING BY ADJACENT TREE	REMOVE	1.8	288
289	WHITE CEDAR	15.0	4.0	GOOD	DOUBLE STEM	ONE SIDED FORM, CROWDING BY ADJACENT TREE	REMOVE	1.8	289
290	WHITE CEDAR	25.0	5.0	GOOD	DOUBLE STEM	ONE SIDED FORM, CROWDING BY ADJACENT TREE	REMOVE	1.8	290
291	WHITE CEDAR	25.0	5.0	GOOD	DOUBLE STEM	ONE SIDED FORM, CROWDING BY ADJACENT TREE	REMOVE	1.8	291
452	RUSSIAN OLIVE	19.0	5.0	POOR	MULTI-STEMMED	ONE SIDED FORM, CROWDING BY ADJACENT TREE, SIGNIFICANT CROWN DIEBACK	REMOVE	1.8	452
453	RUSSIAN OLIVE	15.0	5.0	POOR	MULTI-STEMMED	ONE SIDED FORM, CROWDING BY ADJACENT TREE, SIGNIFICANT CROWN DIEBACK	REMOVE	1.8	453
454	RUSSIAN OLIVE	17.0	7.0	POOR	MULTI-STEMMED	SIGNIFICANT CROWN DIEBACK	REMOVE	1.8	454
455	CRACK WILLOW	52.0	17.0	FAIR	IRREGULAR FORM	LEANING, DEADWOOD AND DIEBACK THROUGHOUT, LOTS OF NEW EPICORMIC	REMOVE	3.6	455
456	BUR OAK	11-22	8.0	FAIR	HIGH CROWN	NARROW FORM, CROWDING BY ADJACENT TREE, SOME TWIG TIP DIEBACK IN CROWN	REMOVE	1.8	456
457	HAWTHORN	25.0	8.0	FAIR	MULTIPLE LEADERS	BROAD FORM, CROWDING BY ADJACENT TREE, DIEBACK THROUGHOUT	REMOVE	1.8	457
458	HAWTHORN	16.0	6.0	FAIR	ONE SIDED FORM	CROWDING BY ADJACENT TREE, DIEBACK IN CROWN	REMOVE	1.8	458
459	HAWTHORN	23.0	6.0	FAIR	ONE SIDED FORM	CROWDING BY ADJACENT TREE, DIEBACK IN CROWN	REMOVE	1.8	459
460	HAWTHORN	28.0	10.0	FAIR	ONE SIDED FORM	CROWDING BY ADJACENT TREE, DIEBACK IN CROWN	REMOVE	1.8	460
461	POPLAR	24.0	9.0	GOOD	MULTI-STEMMED	BRANCHING TO GRADE	REMOVE	1.8	461
462	SIBERIAN ELM	30.0	7.0	GOOD	GOOD FORM	GIRDLED ROOTS	PRESERVE	1.8	462
463	SIBERIAN ELM	24.0	7.0	GOOD	GOOD FORM	GIRDLED ROOTS	PRESERVE	1.8	463
464	SIBERIAN ELM	11.0	4.0	GOOD	GOOD FORM	GIRDLED ROOTS	PRESERVE	1.8	464
465	SIBERIAN ELM	25.0	8.0	GOOD	GOOD FORM	GIRDLED ROOTS	PRESERVE	1.8	465
466	SIBERIAN ELM	20.0	6.0	GOOD	GOOD FORM	GIRDLED ROOTS	PRESERVE	1.8	466

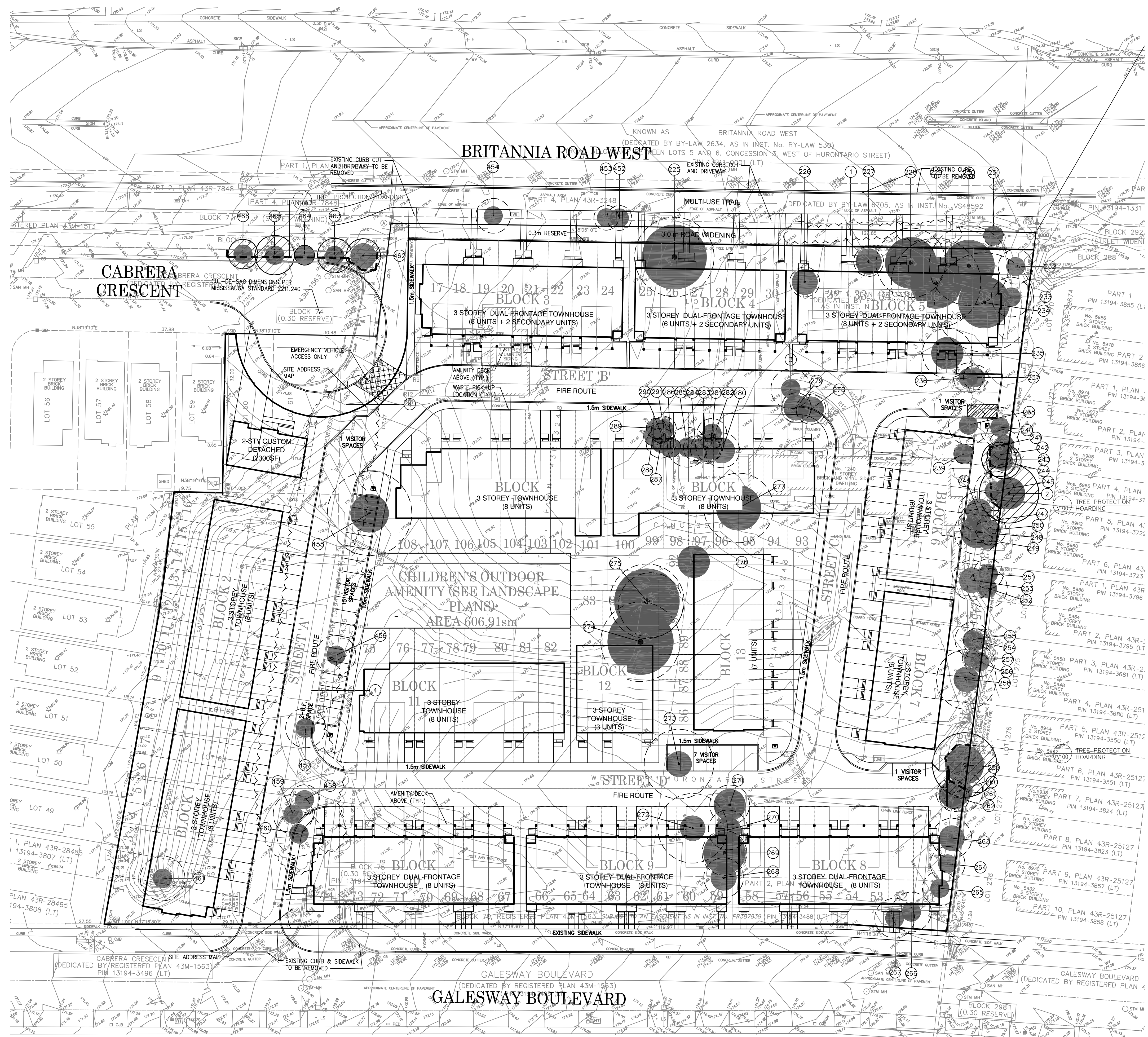
Key #	Tree Species	Diameter (cm)	Crown Dia. (m)	Health	Structure	Comments	Action	Min. TPZ (m)	Key #
1	CEDAR HEDGE	WHIP-14	4.0	GOOD	GOOD FORM	CONTINUOUS, DENSE CEDAR HEDGE	REMOVE	1.8	1
2	BUR OAK	45.0	12.0	GOOD	ASYMMETRICAL FORM	EPICORMIC SHOOTS THROUGHOUT CROWN	PRESERVE	3	2
3	WHITE BIRCH	24.0	8.0	GOOD	DOUBLE STEM	CROWDING BY ADJACENT TREE, EPICORMIC GROWTH THROUGHOUT	REMOVE	1.8	3
4	NATURALIZED THICKET	WHIP-14		POOR-Q/VAIRES		DENSE THICKET DOMINATED BY HAWTHORN AND BUCKTHORN	REMOVE	1.8	4



- NOTES:**
- Hoarding details to be determined following initial site inspection.
 - Private tree hoarding to be approved by Development & Design.
 - City tree hoarding to be approved by Community Services Dept.
 - Hoarding must be supplied, installed and maintained by the applicant throughout all phases of construction.
 - Inspection must be conducted by the Development and Design Division prior to removing any/all private hoarding.
 - Do not allow water to collect and pond behind or within hoarding.
 - T-bar supports are acceptable alternative to 4x4 posts. Unshaped metal supports will not be accepted.
 - Plywood must be utilized for solid hoarding. OSB/Chipboards will not be accepted for solid hoarding. Plywood sheets must be installed on "construction" side of frame.
 - Applicant is responsible to ensure utility locates are completed within city boulevard prior to installing framed hoarding.

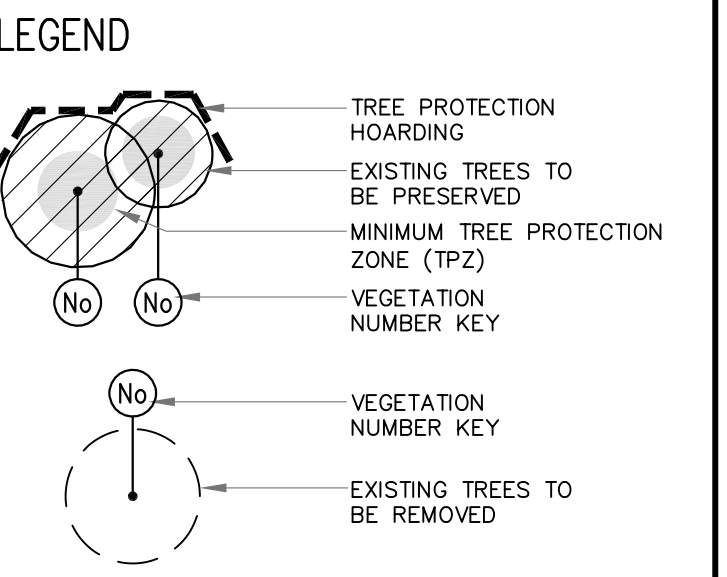
TREE PRESERVATION HOARDING
ISSUE DATE: DATE: 06/06/2021

1 V100 **TREE PROTECTION HOARDING**



GENERAL NOTES

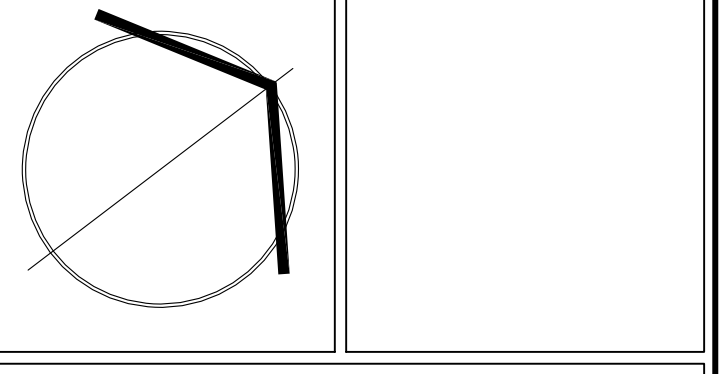
- VERIFY ALL DIMENSIONS.
- DO NOT SCALE DRAWINGS.
- REPORT ANY DISCREPANCIES, DISCOVERED ERRORS, OR OMISSIONS TO THE LANDSCAPE ARCHITECT BEFORE PROCEEDING.
- IT IS ADVISED THAT CONTRACTORS CONTACT THE LANDSCAPE ARCHITECT PRIOR TO CONSTRUCTION TO ENSURE THE USE OF THE LATEST REVISED DRAWINGS.
- DRAWINGS AND SPECIFICATIONS ARE THE PROPERTY OF THE LANDSCAPE ARCHITECT.



Watt Cleary
MATTHEW C. GIFFES
 International Society of Arboriculture
 Certified Arborist #CN-1144
 Date: MARCH 11, 2020

No.	DATE	REVISION	BY
1	MAR. 20, 2020	ISSUED FOR SUBMISSION	B.B.

It is the responsibility of the Contractor and/or Owner to ensure that the drawings with the latest revisions are used for construction.



SBK 5770 HURONTARIO STREET, SUITE 320
 MISSISSAUGA, ONTARIO, L5R 3G5
 T: 416.695.4949 F: 905.712.2101
 WWW.STRYBOS.COM

STRYBOS BARRON KING
 LANDSCAPE ARCHITECTURE

PROJECT:
BRITANNIA ROAD
 RESIDENTIAL DEVELOPMENT
 CONDOMINIUM TOWNHOUSES
 REGIONAL MUNICIPALITY OF PEEL
 BRITANNIA ROAD, MISSISSAUGA

DRAWING TITLE:
**EXISTING TREE INVENTORY
 AND PRESERVATION PLAN**

SCALE:	PROJECT No.
1: 400	20-5406
DATE:	DRAWN BY:
MARCH 2020	SS
CHECKED BY:	DRAWING No.
BB	L100