

CITY OF MISSISSAUGA – NOTICE OF STUDY COMMENCEMENT

Municipal Class Environmental Assessment Study for the extension of Square One Drive

WHAT?

- The City of Mississauga has started studying the extension of Square One Drive, from Rathburn Road West to Confederation Parkway, as part of a study called a Class Environmental Assessment (Class EA).
- Two new intersections – one with Confederation Parkway, and another with Rathburn Road West – would be required for the roadway extension.

WHY?

- To improve access to, from, and within downtown Mississauga, and areas beyond.
- To support “multi-modal” transportation and encourage opportunities to travel by walking, cycling, and transit.
- To create a finer street grid in downtown Mississauga with an urban scale, more walkable blocks, new routing options for local trips, and better transit access.

HOW?

- The study will examine how traffic operates on nearby roadways – both now, and in the future – and determine ways to address any existing roadway safety concerns. It will also examine the impact of extending Square One Drive on the social, cultural, and natural environments, and develop measures to mitigate those impacts.
- Multiple Alternative Designs will be developed and evaluated by the Project Team and refined through public consultation (see below). The Project Team will then select a Preferred Alternative and develop a basic design for the roadway extension (called a preliminary design).
- At the end of the study, an Environmental Study Report (ESR) documenting the entire study process will be available for public review.

GET INVOLVED!

- Consultation is an important part of the Class EA process. Throughout the study, the City will make contact with various agencies and members of the community, and consider their opinions as part of any decisions that are made.
- Two Public Information Centres (PICs) will be held to present information related to the study and answer any questions you may have. Details regarding PICs will be advertised publicly and communicated to you directly as the study progresses.
- To find out more about project announcements and other information please visit the project website:

www.mississauga.ca/squareoneclassea

WE WANT TO HEAR FROM YOU – PLEASE VISIT THE WEBSITE AND COMPLETE A SURVEY!

(if you require a hard copy of the survey, please contact the Project Team – see below)

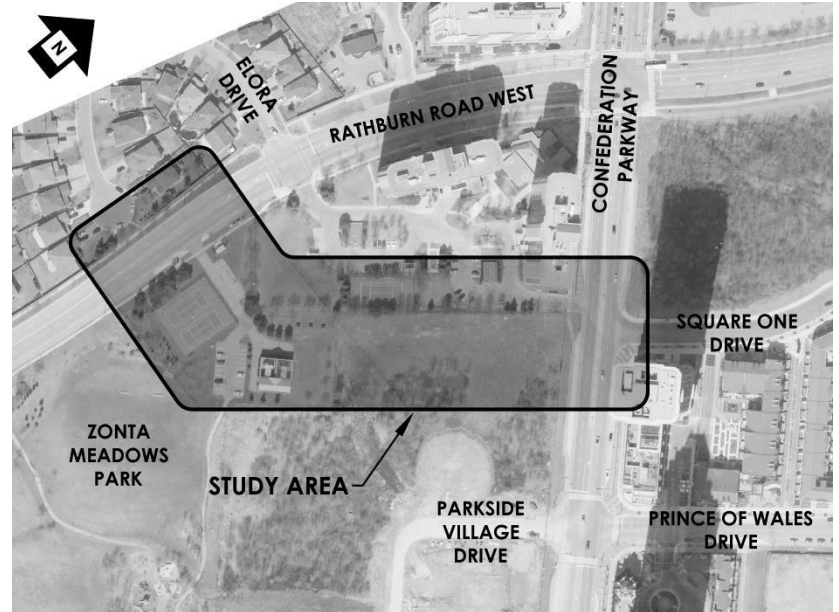
- If you have any questions or comments regarding the study (or wish to be removed from the study mailing list), please contact:

squareoneclassea@stantec.com

Dana Glofcheskie, P.Eng.
Project Manager
 City of Mississauga
 201 City Centre Dr, Suite 800
 Mississauga, ON L5B 2T4
 (905) 615-3200, ext. 8243

Travis Brown, PMP
Consultant Project Manager
 Stantec Consulting Ltd.
 300W – 675 Cochrane Dr
 Markham, ON L3R 0B8
 (905) 944-6866

WHERE?



This notice signals the commencement of the Class EA, a study which will define the problem, identify/evaluate alternative solutions, and determine a preferred design in consultation with regulatory agencies and the public. The study is being undertaken in accordance with the planning and design process for Schedule 'C' projects, as outlined in the "Municipal Class Environmental Assessment" document (October 2000, amended in 2011), which is approved under the Ontario *Environmental Assessment Act*.

Personal information is collected under the authority of the Environmental Assessment Act and will be used in the assessment process. With exception of personal information, all comments shall become part of the public records. Questions about this collection should be directed to the Project Manager listed above.

This notice was first issued on March 31, 2016.