

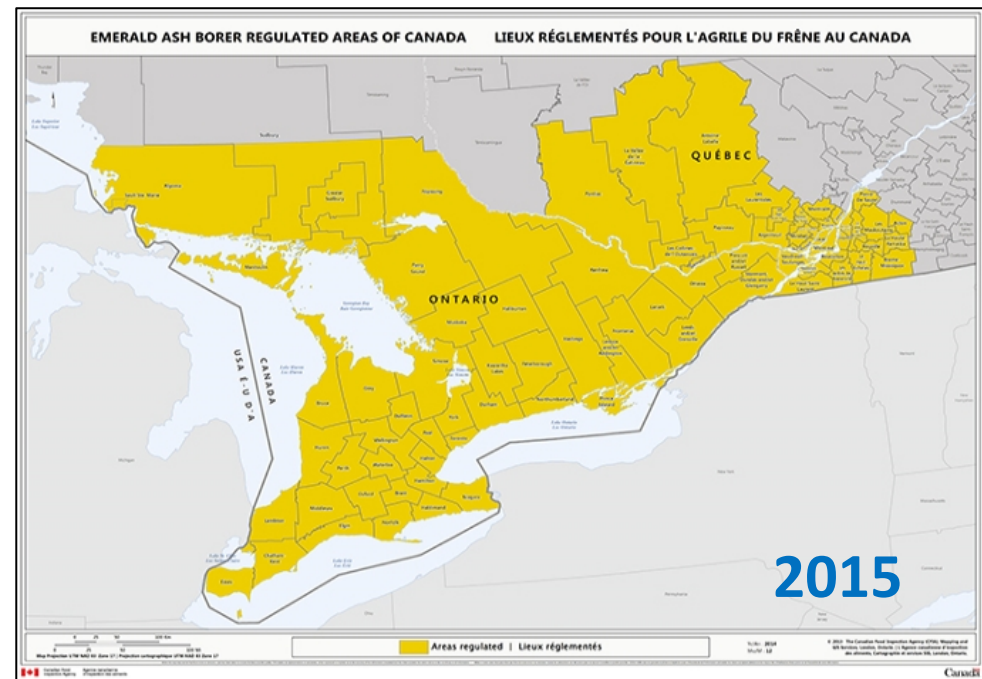
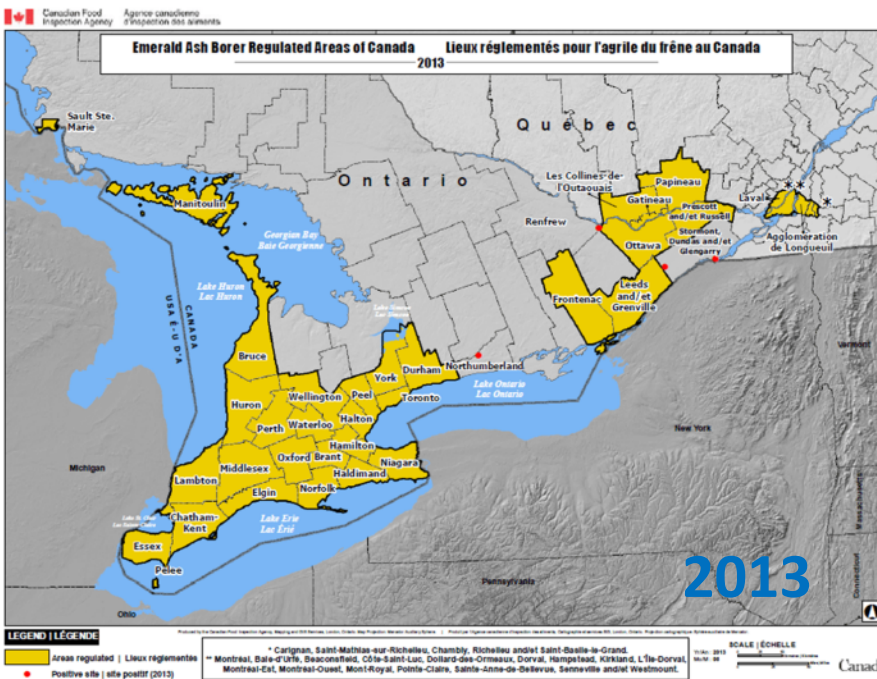
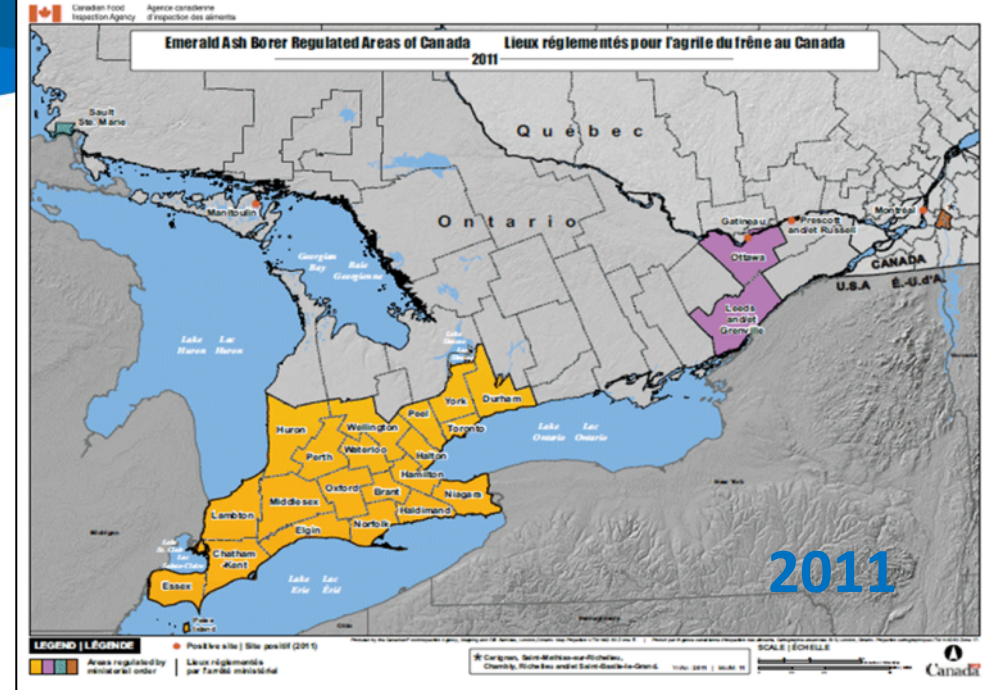
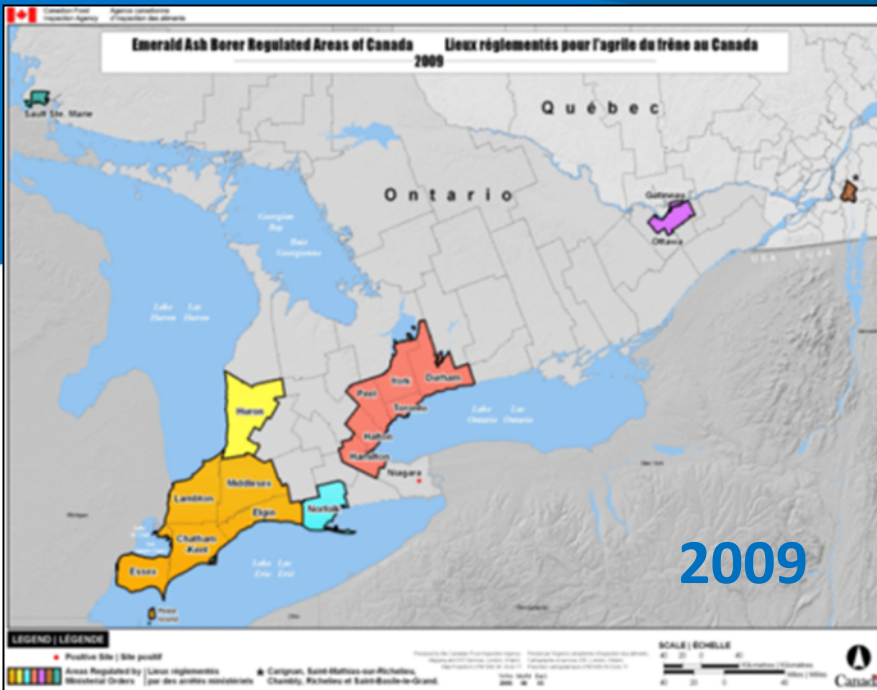
Emerald Ash Borer(EAB)

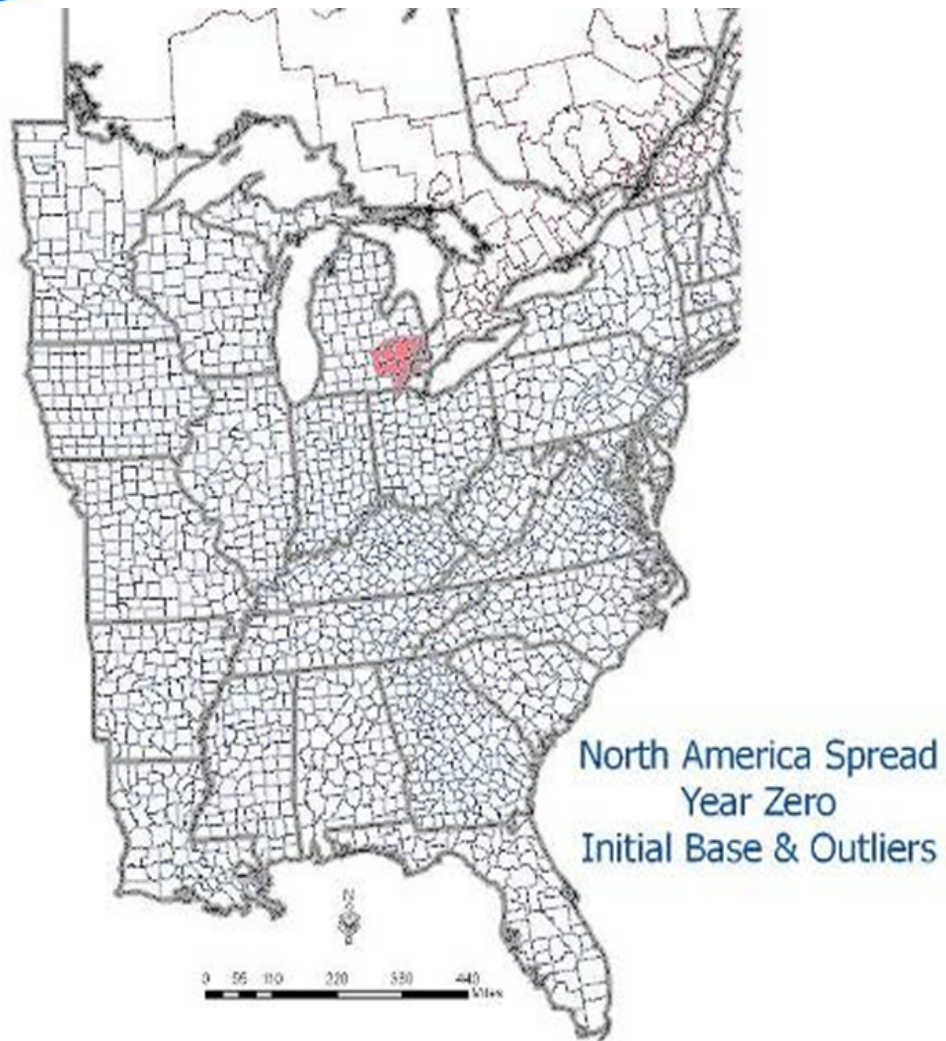


Budget Committee January 13, 2015

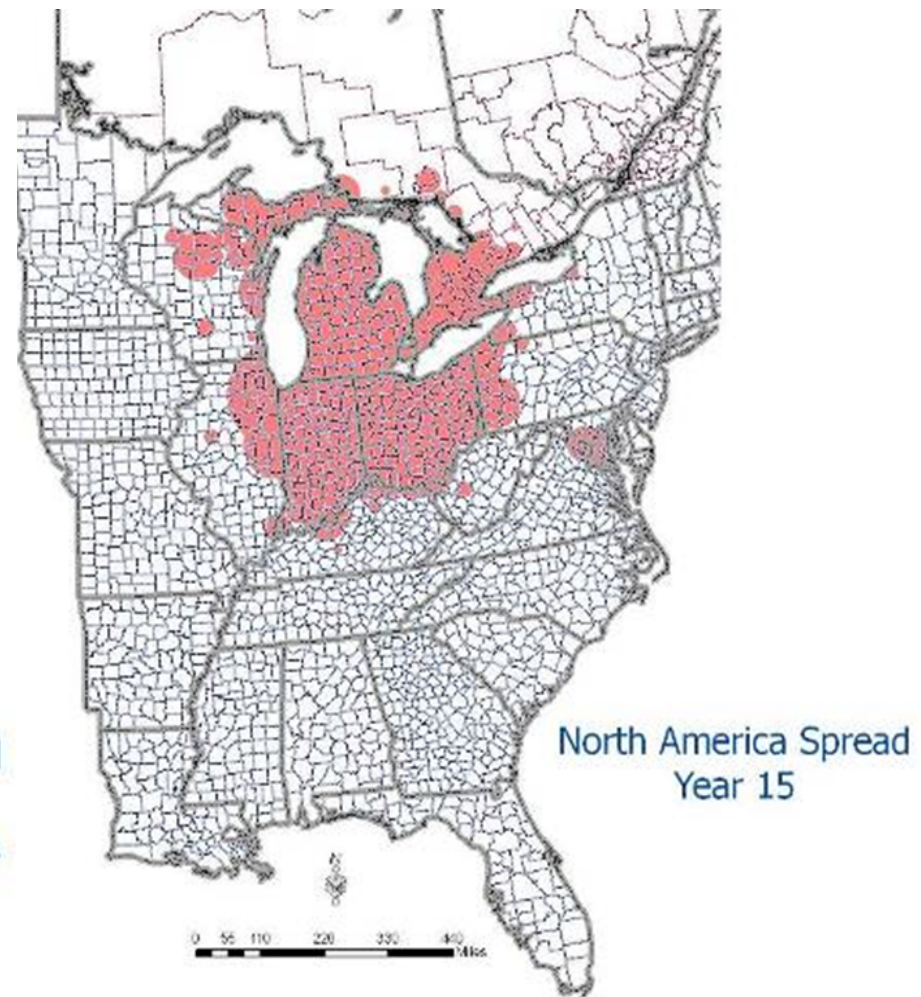
EAB Infestation



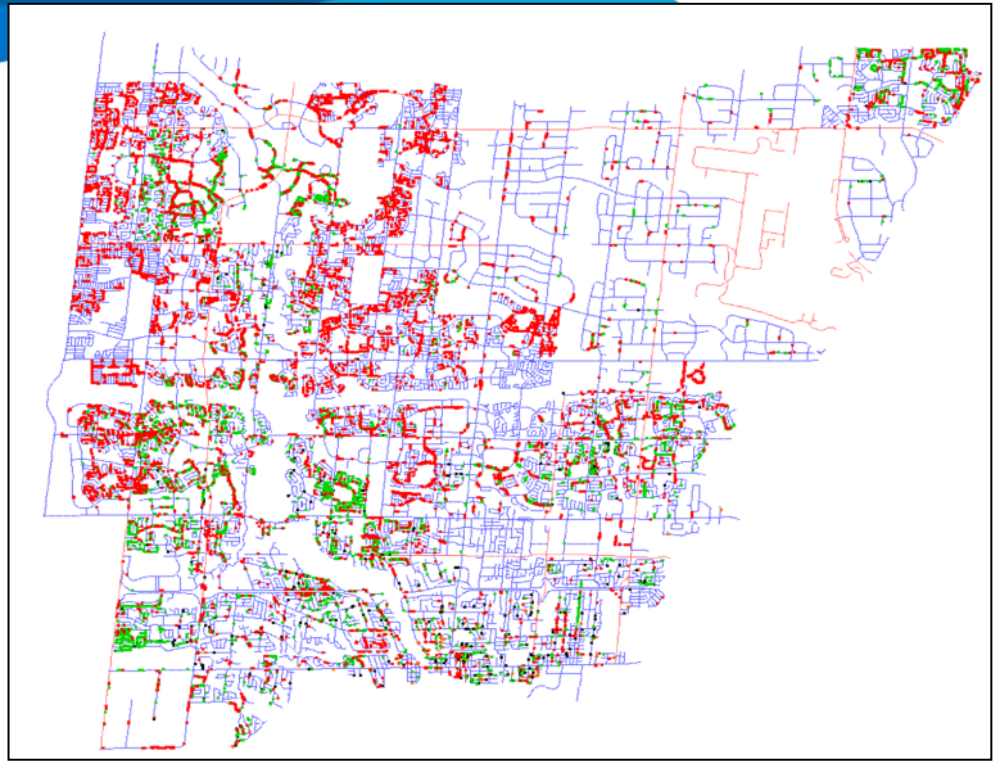




2002



2017



X	Y	Park Name	TREE	SPECIES	DBH
616249.00693	4824914.67620	A.E. Crookes	4558	Black Ash	22
616244.21370	4824910.17194	A.E. Crookes	4568	Green Ash	19
616455.73984	4825176.13855	Douglas Kennedy	4578	Black Ash	27
616409.72576	4824823.60941	Lakefront Promenade	4333	White Ash	19
616390.59306	4824784.74487	Lakefront Promenade	4341	White Ash	22
616513.18159	4825027.49884	Lakefront Promenade	4412	White Ash	20
616443.99300	4824797.85672	Lakefront Promenade	4435	White Ash	24
616419.08033	4824788.13145	Lakefront Promenade	4442	White Ash	24
616359.79396	4824427.13867	Lakefront Promenade	4511	White Ash	24
616441.82239	4824355.86552	Lakefront Promenade	4530	White Ash	29
616683.02503	4825775.93142	Lakeview Park	4274	Black Ash	20
616624.07964	4825477.41086	Lakeview Park	4285	Black Ash	21
616740.30612	4825595.44259	Lakeview Park	4299	Black Ash	35

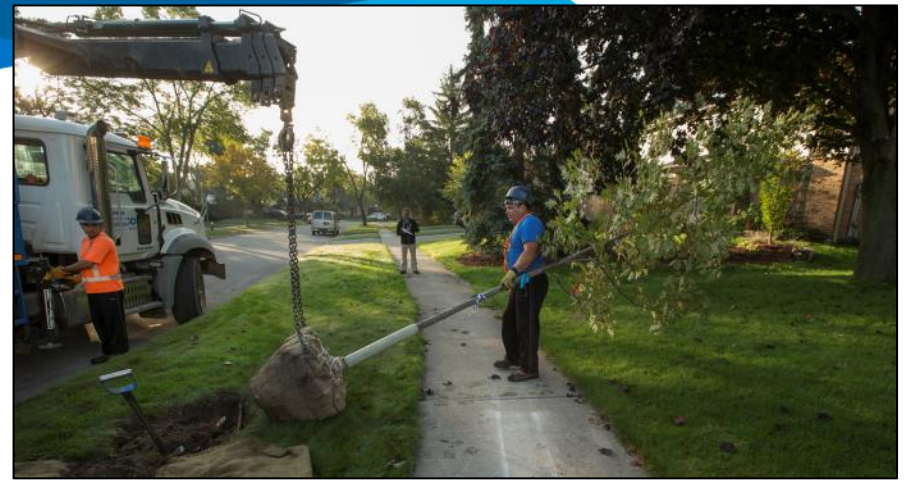
**Ash Tree
Data**



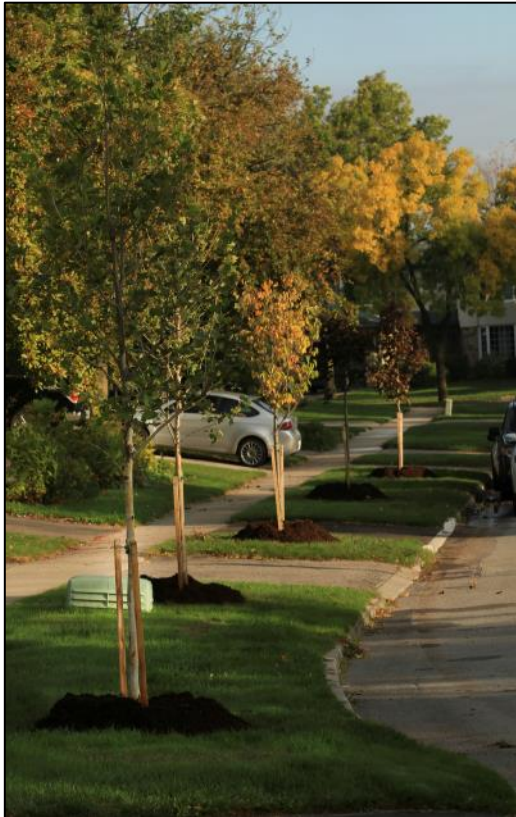
Works Completed







Replacement Trees





Private Trees



Communication Tactics

eCity Homepage Banner

Light Up The Square 2014

Concert, sleigh rides, holiday market, food trucks, photos with Santa & more!

What is EAB?

Learn about EAB, signs of infestation and the safety risk of dead & dying ash trees.

Sign Up for Fall Programs

Play, move & learn with us this fall. Programs begin September 20th.



EAB Website Update


MISSISSAUGA

[login](#)
[store](#)
[contact](#)
[email updates](#)

[advanced search](#)

[Select Language](#) |
 [HOME](#)
[CITY HALL](#)
[RESIDENTS](#)
[BUSINESS](#)
[DISCOVER MISSISSAUGA](#)
[SERVICES ONLINE](#)
[CONTACT & HELP](#)

FORESTRY


- Home
- City Trees & Boulevards
- Private Trees & Encroachment
- Pests & Disease Management
- Maintaining our Natural Areas
- Get Involved
- By-Laws
- Parks

[Residents](#) > [Parks and Forestry](#) > [Urban Forestry](#) > [Pest Management](#)


Emerald Ash Borer (EAB)



RESIDENT UPDATE
GYPSY MOTH




Tweets [Follow](#)



Mississauga P&F
@MississaugaPF 1h

Our #tbt picture today looks at the ice melt moving down the Credit River into Erindale Park 25 years ago in 1990.
pic.twitter.com/YDTn7fsd0r




Tweet to @MississaugaPF

Emerald Ash Borer (EAB) is killing Ash trees in Mississauga.

EAB is an insect that kills all species of Ash trees native to North America. EAB has already infested and will continue to destroy many Ash trees in Ontario, Quebec and the North Eastern United States.

Dead and dying trees are now a serious safety concern as EAB continues to spread to more trees throughout Mississauga. As winter approaches with the potential for wind, snow and ice storms, the danger of falling branches and trees will also increase.



Privately Owned Trees: What Can You Do?

It is your responsibility to treat or remove dead or dying Ash trees on your property.

Once infested with EAB, an Ash tree will die quickly. If your EAB infested ash tree is located in a yard, along a street or a fence, it will pose a safety risk and should be removed.

Safety is the most important issue when determining when to remove your dead or dying ash tree.

If you think a tree on your property is infested with EAB, contact an ISA certified arborist for advice on your tree.

[Find an ISA certified arborist.](#)




Mississauga News

forestry

////////////////////
PARKS AND FORESTRY

*It is your responsibility
to treat or remove dead
or dying ash trees on
your property.*



**emerald ash borer
is killing ash trees**

EAB is an insect that kills ash trees native to North America. It has spread through Mississauga.

Dead and dying ash trees on public and private property may not be safe. Trees and branches may be more likely to fall in winter storm weather.

➤ Learn more about **EAB** and what you need to do at mississauga.ca/eab

(3-1-1) Call 3-1-1 or 905-615-4311
if outside city limits

Elevator Poster

forestry

PARKS AND FORESTRY


eab
emerald ash borer
is killing ash trees



It is your responsibility to treat or remove dead or dying ash trees on your property.

EAB is an insect that kills all species of ash trees native to North America. **EAB** has already spread through large portions of Ontario, Quebec and North Eastern United States.

As the **EAB** population continues to grow in Mississauga, dead and dying trees are becoming a serious safety issue. The safety risk will increase during the upcoming winter storm weather.

➤ Learn more about **EAB** and what you need to do on mississauga.ca/eab

☎ 311 (905 615 4311)



Living Green Blog

18
NOV



Emerald Ash Borer (EAB) is killing Ash trees in Mississauga

EAB is an insect that is killing all species of Ash trees native to North America. EAB has already infested and killed Ash trees in Mississauga, Ontario, Quebec and North Eastern United States.

As EAB spreads throughout Mississauga, and the number of dead or dying Ash trees grows, there is also a growing safety issue with the potential for falling branches, limbs and trees. As winter approaches with the potential for wind, snow and ice storms, the danger of falling branches and trees also increases.

What can you do?

It is your responsibility to treat or remove dead or dying Ash trees on your property.

Once infested with EAB, an Ash tree will die quickly. If your EAB infested Ash tree is located in a yard, along a street or a fence, it will pose a safety risk and should be removed.

Safety is the most important issue when determining when to remove your dead or dying Ash tree.

What is the City doing?

The City has inspected all city-owned Ash trees along boulevards and in parks in Mississauga. The City continues to inspect woodlots for EAB. City contracted crews have treated Ash trees that are sustainable with TreeAzin™. The City continues to remove dead or dying Ash trees on City property. All city-owned street trees and park trees removed due to EAB will be replanted within the community.

To learn more about EAB and what you need to do, visit the website: www.mississauga.ca/eab

e Newsletters

Recreation

Stay Fit, Get Active
 Fitness, Swim and Skate memberships available.
[Find Out More](#)

Rent Our Spaces
 Affordable rooms and facilities for rent.
[Book With Us](#)

NEWS AND EVENTS



New! Skating for the Family
A terrific opportunity for families to skate together, supervised by qualified skating instructors. Register today!



Aquatics Leadership Online
Sign up today for aquatic and first aid courses starting in January. Find courses that build your skills and confidence.



Jerry Love Foundation Gala
Children love recreation. Help provide year-round opportunities. Join us for A Night at the Club. Nov. 20th, tickets available.



Transitway Set To Open
MiWay service on the Mississauga Transitway starts Monday, November 17. Experience it on Routes 21, 107 and 109.



What is Emerald Ash Borer?
Learn about Emerald Ash Borer (EAB) the signs of infestation and the safety risk posed by dead or dying ash trees.

MY ACCOUNT



AARON, HOW ABOUT A MEMBERSHIP?
Get unlimited access to fitness cardio, weight room and classes, public swimming and skating, walking track, and open therapy time by choosing the membership type that's right for you.



Recreation Memberships
Everyone should be able to participate in recreation. Learn all about ActiveAssist our fee assistance program for low-income families and individuals.



activeassist
for low-income families

Library

MISSISSAUGA LIBRARY SYSTEM
ANNUAL REPORT
WATCH / LISTEN


Around Town



Transitway Set To Open
MiWay service on the Mississauga Transitway starts Monday, November 17. Experience it on Routes 21, 107 and 109. miway.ca/transitway



Art Gallery of Mississauga
On view November 6 – January 1:
Rahab Nazzari | Dipna Horra | Rana Sava. Free admission!
artgalleryofmississauga.com



What is EAB?
Learn about Emerald Ash Borer (EAB) the signs of infestation and the safety risk posed by dead or dying ash trees.
Mississauga.ca/eab







MISSISSAUGA

City of Mississauga, 300 City Centre Drive, Mississauga, Ontario Canada L6B 3C1
[Terms of Use](#) | [Accessibility](#) | ©1995-2014

Flyer

forestry
PARKS AND FORESTRY


eab
emerald ash borer
is killing ash trees




It is your responsibility to treat or remove dead or dying Ash trees on your property.

EAB is an insect that kills all species of Ash trees native to North America. It has spread through Ontario, Quebec and North Eastern US.

Dead and dying Ash trees on public and private property may not be safe. Trees and branches may be more likely to fall during storm weather.

➤ Learn more about **EAB** and what you need to do on mississauga.ca/eab

3-1-1
Call 3-1-1 or 905-615-4311
if outside city limits


MISSISSAUGA

forestry
PARKS AND FORESTRY

what can you do?

It is your responsibility to treat or remove dead or dying Ash trees on your property.

Once infested with **EAB**, an Ash tree will die quickly. If your **EAB** infested Ash tree is located in a yard, along a street or a fence, it will pose a safety risk and should be removed.

Safety is the most important issue when determining when to remove your dead or dying Ash tree.

Contact an ISA certified arborist for advice on your Ash tree.

what is the City doing?

The City has inspected all city-owned Ash trees along boulevards and in parks in Mississauga. The City continues to inspect woodlots for **EAB**.

City contracted crews have treated Ash trees that are sustainable with TreeAzin™. The City continues to remove dead or dying Ash street trees and trees in parks and woodlots city-wide. Removal focuses on high risk areas next to roadways, trails and paths, homes, schools and buildings/facilities. Public safety is the first priority.

All city-owned street trees and park trees removed due to **EAB** will be replanted within the community.

➤ Learn more about **EAB** and what you need to do on mississauga.ca/eab

➤ If you would like to help us plant trees and build our tree canopy, visit onemilliontrees.ca to learn how you can get involved.

3-1-1
Call 3-1-1 or 905-615-4311
if outside city limits


MISSISSAUGA

Removal Notice




The City-owned ash tree(s) adjacent to your property has (have) been inspected and identified for removal due to declining health as a result of the emerald ash borer (EAB).

City contracted crews will be in your neighbourhood removing trees in the next few weeks.

The tree stump will be removed soon after the initial tree removal and the ground will be repaired with topsoil and reseeded as weather permits. Trees removed during the winter months will be stumped and the ground repaired the following spring.

The City plans to replant each street and park tree removed due to EAB. Trees may need to be replanted in another location in the community due to changes in utilities. Residents will be informed of these relocations.


For more information call  (3-1-1)
(905-615-4311 if outside city limits)

To learn more about EAB visit mississauga.ca/eab

Twitter Chat




Conversation from Twitter Chat




Magdalena Edwards @magalenaedwards · Nov 12
 @citymississauga I am interested if we can started treating some of the trees now that we know that 99% of the woodlands will be cut

↩ ↻ ⭐ ⋮




City of Mississauga @citymississauga · Nov 12
 @magalenaedwards We're currently treating all viable Ash trees in the city #MississaugaEAB

↩ ↻ 1 ⭐ ⋮




Magdalena Edwards @magalenaedwards · Nov 12
 @citymississauga there are over 50 with red Xs marked to be cut down in the wadding Cres wooded lot

↩ ↻ ⭐ ⋮




City of Mississauga @citymississauga · Nov 12
 @magalenaedwards High risk areas with a high number of Ash trees, such as those with trails and paths, are our priority.

↩ ↻ 2 ⭐ ⋮



Magdalena Edwards @magalenaedwards · Nov 12
 @citymississauga this has greatly changed the G1 Green Belt Zone(Sheridan Homelands) should there not be a priority on restoring such zones?

↩ ↻ ⭐ ⋮




City of Mississauga @citymississauga · Nov 12
 @magalenaedwards Yes, it is definitely a priority and is part of our #EAB plan #MississaugaEAB

RETWEETS
 2

6:29 PM - 12 Nov 2014 · Details


↩ ↻ ⭐ ⋮ [Hide conversation](#)

Reply to @citymississauga @magalenaedwards



Magdalena Edwards @magalenaedwards · Nov 12
 @citymississauga where can we find details on the #EAB plan? Is it posted and available to the public?

↩ ↻ ⭐ ⋮



City of Mississauga @citymississauga · Nov 12
 @magalenaedwards Yes it is! You can find all the details here: ow.ly/EbUW #MississaugaEAB

↩ ↻ ⭐ ⋮

Print Spread

forestry

PARKSANDFORESTRY



emerald ash borer
is killing ash trees



Trees with **EAB** are a safety risk

EAB is an insect that is killing all species of Ash trees native to North America. EAB has already infested and killed Ash trees in Mississauga, Ontario, Quebec and North Eastern United States.

EAB is spreading in Mississauga and the number of dead or dying Ash trees is growing. There is a safety issue with the potential for falling branches, limbs and trees, especially with winter's wind, snow and ice storms.

What can you do?

It is your responsibility to treat or remove dead or dying Ash trees on your property.

Once infested with EAB, an Ash tree will die quickly. If your EAB infested Ash tree is located in a yard, along a street or a fence, it will pose a safety risk and should be removed.

Safety is the most important issue when determining when to remove your dead or dying Ash tree.

What is the City doing?

The City has inspected all city-owned Ash trees along boulevards and in parks in Mississauga. The City continues to inspect woodlots for EAB.

City contracted crews have treated Ash trees that are sustainable with TreeAzin™. The City continues to remove dead or dying Ash trees on City property.

All city-owned street trees and park trees removed due to EAB will be replanted within the community.

➤ **To learn more about EAB and what you need to do, visit the website:**
www.mississauga.ca/eab



It is your responsibility to treat or remove dead or dying Ash trees on your property.



EAB is an insect that kills all species of Ash trees native to North America. It has spread through Ontario, Quebec and North Eastern US.



Dead and dying Ash trees on public and private property may not be safe. Trees and branches may be more likely to fall during storm weather.

➤ Learn more about **EAB** and what you need to do on mississauga.ca/eab



Ongoing Works



