

Karen Ras

Regional Councillor • Ward 2



300 City Centre Dr., Mississauga, Ontario L5B 3C1 • 905-896-5200 • karen.ras@mississauga.ca

Dear Friends and Neighbours,

I am excited to share with you my first newsletter as your City and Regional Councillor. It contains information that affects you, your family and your neighbourhood.

More than any other order of government, local government has the greatest impact on a person's daily life. Municipal government maintains streets and parks, collects waste, provides housing, clears snow (during one of the most challenging winters), and provides a safe community for all. Your tax dollars work hard to maintain and improve the quality of life

across our beautiful and diverse city and region.

With so much happening in the city, it can be a challenge to provide timely and up-to-date information so I encourage you to visit my web page at mississauga.ca/portal/cityhall/ward2 and follow me on Twitter @RasWard2 or on Facebook at **Karen Ras**. You can also visit the City of Mississauga website at mississauga.ca for direct access to numerous online services or feel free to contact me directly at karen.ras@mississauga.ca or by phone at **905-896-5200**.

Starting this spring, I will be holding regular community office hours at

Clarkson Community Centre. Please contact my office if you wish to book a meeting or just drop in to say hello!

On behalf of my Executive Assistant Helena Francisco and my Administrative Assistant Jennifer Waye, we look forward to being of service to you.

Thank you for the privilege of allowing me to represent your interests on Council.

Kind Regards,

Karen Ras,
Councillor Ward 2



Bi-Weekly, Cart-Based Waste Collection is **COMING!**

Beginning January 4, 2016, those of you who currently receive curbside waste collection services will be moving to bi-weekly, cart-based collection which means:

- Garbage and recycling will be picked up every other week (one week garbage, the next week recycling) but organics will continue to be picked up weekly
- You will be required to use carts (rather than bags and bins) for your waste

In early 2016, once the program has been rolled out, the Region will offer a collection program for the old blue boxes and green bins. Whenever possible, residents are encouraged to re-purpose the old containers (i.e. yard waste).

You can go to peelregion.ca/carts to learn more about bi-weekly, cart-based waste collection.

Key Dates to Remember:

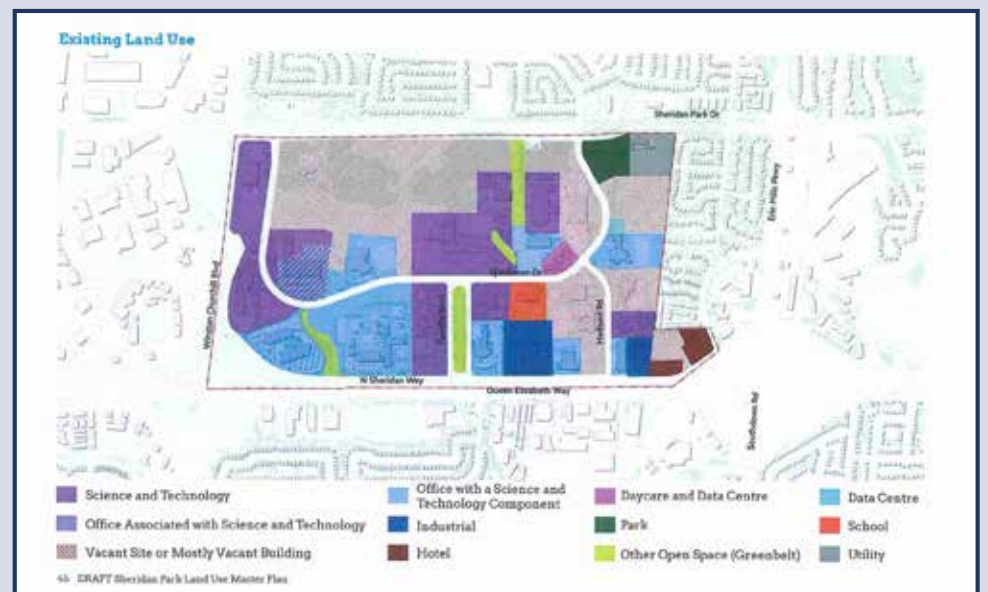
- Carts will be delivered from September through mid-December of 2015
- You start using the new carts during the week of January 4, 2016

Please note that a few locations in Ward 2, primarily condominium townhouse complexes, will be on a bag-based program instead of using carts until they are phased in.

More information about the bi-weekly, bag-based program can be found at peelregion.ca/bags.



Economic Development: Sheridan Park Corporate Centre Land Use Master Plan



The Sheridan Park Corporate Centre is located on 138 hectares (340 acres) north of the Queen Elizabeth Way (QEW) between Erin Mills Parkway and Winston Churchill Boulevard. It was established originally as the Sheridan Park Research Community in the mid-1960s. There is restrictive zoning in place and, based on an ever changing business climate, the zoning of Sheridan Park is being reviewed and updated.

In November 2013, the Planning and Building Department along with the Sheridan Park Association, retained Urban Strategies Inc., a planning consultant firm to finalize a Land Use Master Plan for the Sheridan Park Corporate Centre. The Plan is currently out for public comment and will help shape the new zoning by-law for the Park. These much needed proposed updates to City planning policies for the Park should bolster the number of companies in Mississauga's growing science and technology sector.

As Councillor, I am pleased and excited that we are moving forward with plans to update Sheridan Park Corporate Centre. It's time to build on the past successes of this innovation hub.

Story continues inside



Economic Development: Sheridan Park Corporate Centre Land Use Master Plan
Continued from front page

There are great opportunities to support existing businesses in the park, and to build new partnerships with innovative companies and post-secondary research institutions like the University of Toronto Mississauga (UTM) and Sheridan College. It is investments like these that can add new, high-paying jobs and vibrancy to the area.

The new master plan recommends updates to the City's land use planning framework based on extensive consultations with businesses located there. The proposed changes will infuse some flexibility for types of businesses that can provide and support a science and technology hub needs.

For additional information, please contact Lisa Christie, Planner, Planning and Building Department at 905-615-3200, ext. 5542 or by email at lisa.christie@mississauga.ca.

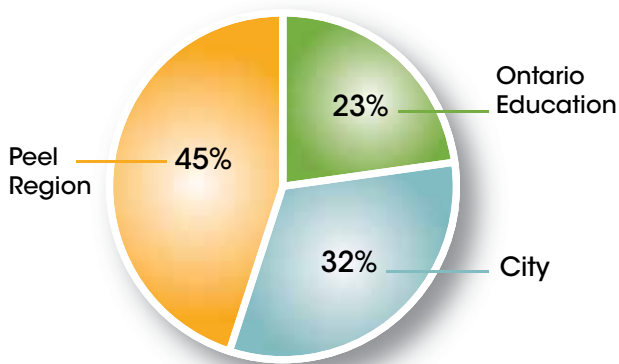
Councillor Karen Ras at the Sheridan Park Corporate Centre, holding copy of the Draft Sheridan Park Corporate Centre, Land Use Master Plan. Photo courtesy of The Mississauga News, John Stewart.

The 2015 City and Regional Budgets are Approved

Mississauga City Council and Peel Region have passed their 2015 budgets. The tax increase will be 2.2 per cent on the 2015 residential property tax bill. The increase includes 1.3 per cent for the City's services and 0.9 per cent for Region of Peel services. The goal is to keep property taxes as low as possible while delivering good value for money and supporting the local priorities.

Did you know that less than one third of your property tax bill is affected by the City tax rate?

Residential Property Tax Bill

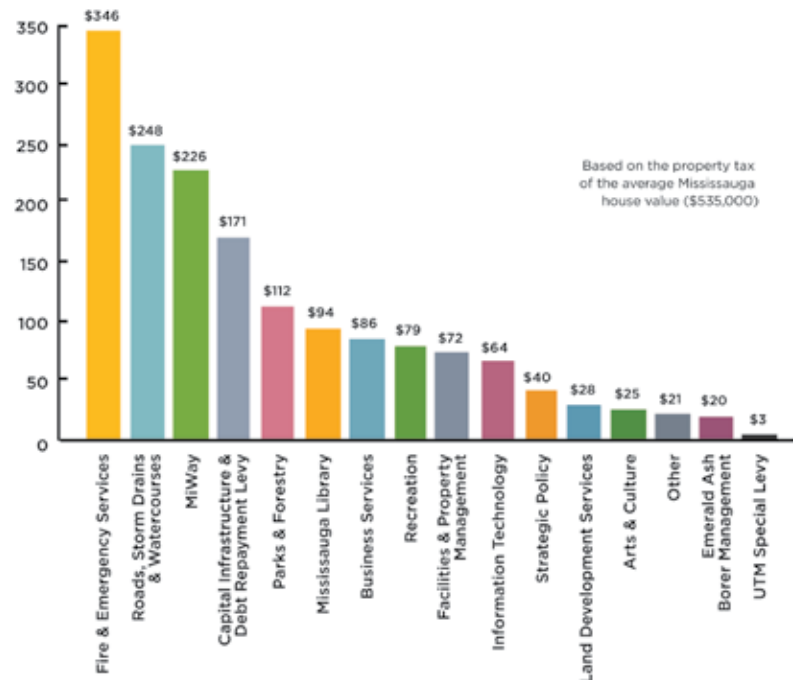


Both the City and Regional Councils sought to minimize the burden of tax so that any potential increases remain affordable while continuing to be citizen-focused, fiscally-responsible and financially stable.

Gross Operating Budget

In 2015, the City of Mississauga will spend \$694.8 million on the delivery of services to citizens and the repair and maintenance required for the upkeep of City facilities and infrastructure. City staff found \$6.2 million in efficiencies for 2015. Savings are in the areas of staff benefits, electricity costs, and other miscellaneous efficiencies.

What do your City taxes pay for?



Highlights of the 2015 Regional Budget include the following service-level increases:



19,500 more Regionally controlled trips for accessible transportation services each year



2,555 additional paramedic service hours each year to address an increase in 9-1-1 calls



300 additional child care subsidies per year



100 additional housing rent subsidies annually

Extended operation hours

at Battleford and Brampton Community Recycling Centres (CRCs) Monday to Thursday 8:30 a.m. to 8 p.m. from May through October



Highlights of the 2015 City of Mississauga Capital Program include:

- **\$36 million** in Transportation and Works for construction and implementation of the Bus Rapid Transitway
- **\$24.1 million** in Storm Drainage and Erosion Control Projects
- **\$15 million** for renovation of Meadowvale Community Centre
- **\$11 million** in Road Rehabilitation Projects
- **\$5.5 million** in Bridge and Structure Rehabilitation
- **\$4.5 million** for Ninth Line Widening – Derry Road to North Limit
- **\$4.2 million** in Parks and Forestry to mitigate the impacts of the Emerald Ash Borer

LOOKING AHEAD:

Stormwater Charge

In December 2013, City Council approved a stormwater utility program with a target date of January 2016. The charge will appear on the Region of Peel Water bill. The charge is based on the amount of hard surface area on a property as a measure of how much stormwater runs off the property into the City's drainage system. It is a more fair and equitable approach to provide funding for the City's stormwater program. A stormwater charge will give the City the resources it needs now and in the future.

WATER CAPITAL WORKS Projects in Ward 2

Watermain work on the following streets is in progress and expected to finish this summer:

- Bodmin Road
- Cramer Street
- Padstow Crescent
- Widemarr Road
- Una Road
- Yeovil Road
- Caldwell Avenue
- Cresthampton Lane
- Mayford Court
- Tecumseh Park Drive

Work on Arioso Court, Corsica Court, Pyramid Crescent, Saginaw Crescent, Wadding Crescent and Woking Crescent has just recently begun and will be completed by the end of the year.

New Local Health Integrated Network for South West Mississauga

I was pleased to be in attendance at an event where MPP Charles Sousa announced the new South West Mississauga Health Link which will focus on delivering better care to individuals with complex care needs through integrated, individualized care plans and coordinated support from a tightly knit team of providers.

healthcareathome.ca/mh



From left to right, Angela Burden, Vice President Regional Programs and Strategic Development, Mississauga Halton Community Care Access Centre (CCAC); Ronald Haines, Vice Chair, Mississauga Halton Local Health Integration Network (LHIN); Karen Ras, Ward 2 Councillor; Charles Sousa, MPP, Mississauga South; Caroline Brereton, CEO, Mississauga Halton CCAC; Bill MacLeod, CEO, Mississauga Halton LHIN.

Councillor Ras Visits Rotary



Fred Durdan presenting appreciation certificate to Councillor Karen Ras, who spoke at the Rotary Club Mississauga Lakeshore.

Getting the scoop on 311

Councillor Karen Ras gets pointers from Customer Service Advisor, at the 311 office. What is 311? It's the phone number to reach municipal government services and non-emergency police services. If you've lost your pet or need information on zoning or have any other questions, this is the one-stop shop for information!



Investing in our Community: Forestview Park in Clarkson

The Forestview Park playground has reopened with new features, including a "Spinfinity" spinning component and "Harry the Hippo" as well as slides, swings and spring toys. The playground mulch improves accessibility and protects against falls. A sandbox and park benches will be added this spring. A new park pathway will be installed later in the summer.



Ottawa 67's captain Travis Konecny and Mississauga Steelheads captain Bryson Cianfrone face off for the ceremonial puck drop with Mississauga Councillors Ras,

Fonseca, Starr, Mahoney, Saito, McFadden and Carlson at the 'War of the Wards' hockey game held Sunday, March 8, 2015.

Mississauga Homeowners' Water Meters May Be Scheduled for Mandatory Replacement Program

Mississauga homeowners with water meters that are more than 20 years old may be contacted by the Region to participate in its Mandatory Water Meter Replacement Program. Residents will not be billed for the cost of this replacement. The Water Meter Replacement Program is an important part of ongoing maintenance of the Region's water meter system.

Mississauga residents who receive a letter notifying them of their mandatory participation will need to call and book an appointment with Neptune Technology Group Canada Ltd. (independent contractor). Neptune representatives (dressed in a uniform with proper identification) will then come and remove residents' old meters from inside their homes and replace them with new meters and reading devices.

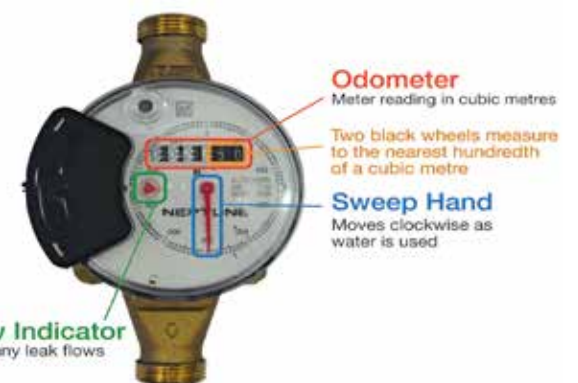
Please remember that residents set the date and time of meter replacements with the approved installer (Neptune) and anyone showing up unannounced asking for entry into your home should be reported.

For more information, please call **905-791-7800**, ext. **3226**.

Protect Yourself – Learn How to Find and Check Your Water Meter

Learning how to check your water meter to find leaks around your home could save you from a high water bill. Once leaks are found, they are often easy and inexpensive to fix.

Two Black Wheel Meter



How to Check Your Water Meter:

1. Turn off everything that uses water in and around your home. This includes appliances such as water softeners and filtration devices.
2. Find your meter in your basement or crawl space. The meter is usually beside the main shut-off valve.
3. Look at the low flow indicator, as shown below.
4. If no water is being used in your home and your low flow indicator moves, you have a leak.
5. If the sweep hand moves when you believe no water is being used in your home, you may have a larger than average leak.

Once you've determined you have a leak, you need to locate it. How to videos and more information on how to find and fix indoor and outdoor leaks on your property can be found at peelregion.ca/leaks.

What is the Committee of Adjustment?

The Committee of Adjustment Office administers the hearing applications for minor variances and consents. Minor Variance requests deal with relief from the terms of a zoning by-law where a proposed use or structure does not exactly conform to the zoning by-law. The Committee of Adjustment can also approve the expansion of a legal non-conforming use and similar uses. Consent applications deal with the division of properties for the creation of a new lot or lot addition and creation of private easements. The approval of these applications rests with the City's Committee of Adjustment. The Committee currently consists of seven (7) citizen members appointed by Council for the four year term of Council.

Any person or public body can submit comments of support or concerns to the Committee.

When the Committee is considering a minor variance application, the four tests as prescribed by Section 45(1) of the Planning Act are applied to determine if the minor variance should be approved. The four tests are as follows:

- Is the application minor in nature?
- Is it desirable for the appropriate development or use of the land, building or structure?
- Is it in keeping with the general intent and purpose of the Zoning By-law?
- Is it in keeping with the general intent and purpose of the Official Plan?

A minor variance approval may contain various conditions including required approvals from various city departments, outside agencies or any other conditions that the Committee feels is appropriate.

The Committee makes their decision at the scheduled public meeting. The Committee considers all information or comments submitted before making a decision.

Decisions of the Committee may be appealed to the Ontario Municipal Board (OMB). The decision of the OMB is the final decision. The OMB is an independent administrative tribunal responsible for hearing appeals and deciding on a variety of contentious municipal matters.

For more information, check out the new Citizens Guide at mississauga.ca/portal/cityhall/committeeofadjustment or contact David Martin, Committee of Adjustment Secretary/Treasurer, 905-615-3200, ext. 5433 or by email at dave.martin@mississauga.ca.

Ratray Marsh Update



CVC (Credit Valley Conservation) completed the second and final phase of sediment removal at Ratray Marsh. The work was completed within budget and ahead of schedule, in just five weeks.

The CVC removed 6,435 m³ of sediment exposing native organic soils, installed 16 habitat structures and removed the temporary access road constructed by the Region of Peel.

CVC staff will continue with carp control and install native aquatic plants this summer.

Environment Canada/Canadian Wildlife Service recognize Ratray Marsh as a benchmark site for the Coastal Wetland Monitoring Project, part of the Great Lakes Restoration Initiative. They will monitor the site on behalf of CVC.

Sheridan Villa's day programs provide support and respite to caregivers



Sheridan Villa's low-cost Adult Day Service (ADS) programs help seniors and adults with physical or cognitive disabilities get out of the house and interact with others in a safe and supportive environment. Located at 2460 Truscott Drive, the program also allows caregivers the opportunity to rest or to take care of other matters.

ADS programs include up to 10 hours of daytime or evening supported programming and care from professional and caring staff including assistance with eating, dressing and toileting, bathing, physiotherapy, recreation programs, on-site health clinics, access to on-site nurses and lunch or dinner for \$20.20 per day.

Regular ADS program hours

Monday to Friday 8 a.m. – 6 p.m.
Saturday 8 a.m. – 5 p.m.

Evening ADS program hours

Monday and Wednesday 3 – 9 p.m.

Bathing program hours

Monday and Wednesday 3 – 8 p.m.
Saturday Noon – 4 p.m.

Sheridan Villa also offers professionally trained support workers to provide personal services like baths and showers for seniors who cannot bathe safely in their own homes. The cost for this service is only \$5 for a one-hour appointment.

Throughout the year, Sheridan Villa hosts free exercise and fall prevention classes funded by the Local Health Integration Network. These drop-in classes run Tuesdays and Fridays at 9 a.m., 10 a.m. and 11 a.m.

To book a tour of Sheridan Villa or to register for these ADS programs or services, call **905-791-8668** ext. **2915**.

KNOW WHO TO CALL

2-1-1 is for confidential information and referral to non-emergency community, health and social services in Peel:

- employment leads
- doctors accepting patients
- social housing resources



3-1-1 provides residents with direct access to local municipal government programs and services in Peel:

- garbage pick-up
- water billing
- recreation programs



9-1-1 is for life-threatening emergencies or crimes:

- a fire
- a crime in progress
- a medical emergency

Visit peelregion.ca for more information.

KEY CONTACTS

Councillor Karen Ras
karen.ras@mississauga.ca



@RasWard2



Karen Ras

T: 905.896.5200
Region of Peel 905-791-7800
peelregion.ca

Water Billing	905-791-8711
Water (24 hours)	905-791-7800
Waste Management	905-791-9499
Peel Art Gallery, Museum and Archives	905-791-4055
Peel Public Health	905-799-7700

Councillor Karen Ras delivers a hot meal to a Ward 2 client of the Red Cross' Meals on Wheels program.

