

2019 EMPLOYMENT PROFILE

EMPLOYMENT

OVERALL WORKERS EMPLOYED WITHIN MISSISSAUGA

▲ 1.6%
445,141

TOTAL EMPLOYMENT + CENSUS ADJUSTMENT

416,595 + 28,546

TEMPORARY EMPLOYMENT***

16,930 ▲ 9.6%

EMPLOYEES THAT WORK FROM HOME

1.7% BASED ON 88.7% SAMPLE SIZE

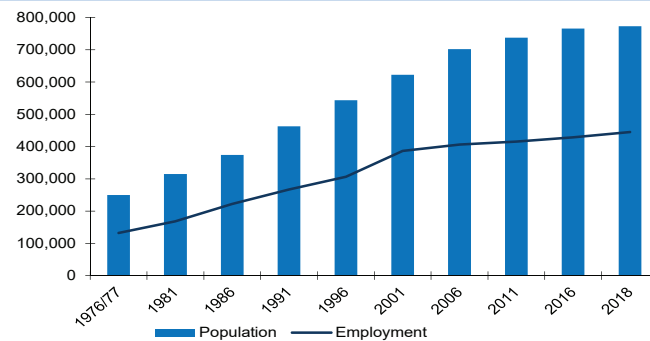
2018 TOTAL FORECASTED POPULATION

773,420 ▲ 0.4%

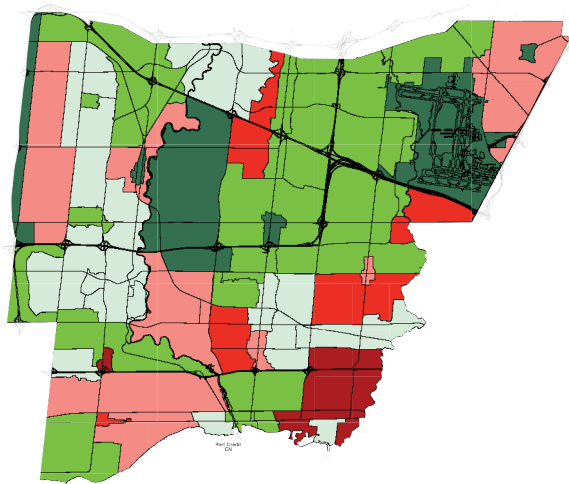
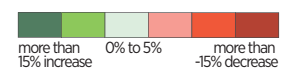
2018 EMPLOYMENT RATIO

0.58

WORKERS EMPLOYED AS A PROPORTION OF TOTAL POPULATION 1976-2018



EMPLOYMENT TRENDS 2014-2018



BUSINESSES

TOTAL NUMBER OF BUSINESSES IN MISSISSAUGA

▲ 4.6%
94,995

NUMBER OF BUSINESSES OPERATING ON BUSINESS SITES

22,474

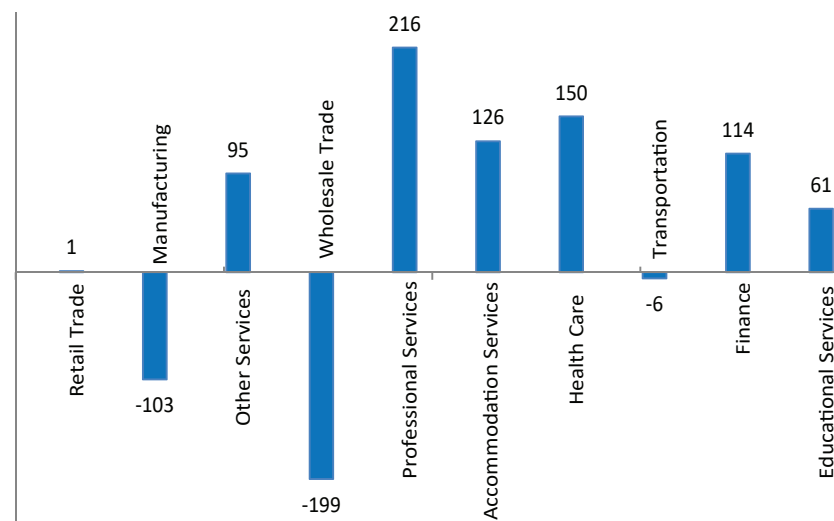
HOME-BASED BUSINESSES*

72,521

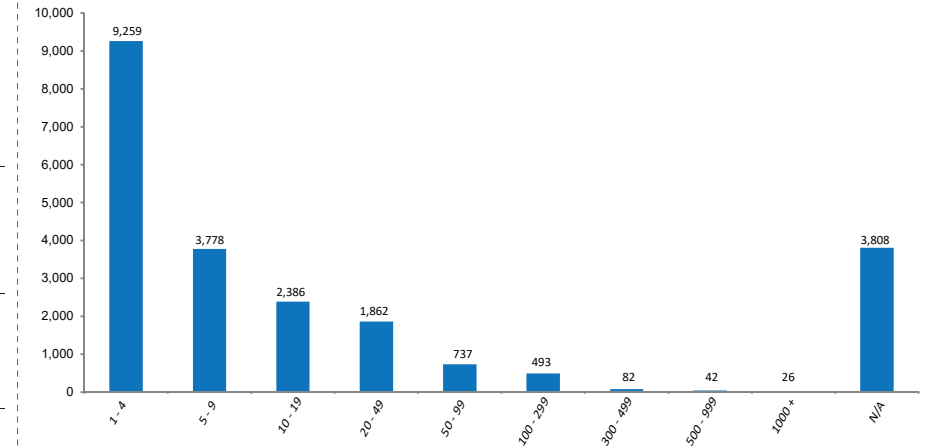
NUMBER OF BUSINESSES BY BUSINESS CLASSIFICATION FOR TOP 10 SECTORS

- 2,992 RETAIL TRADE
- 2,416 MANUFACTURING
- 2,364 OTHER SERVICES
- 2,175 WHOLESALE TRADE
- 1,975 PROFESSIONAL + TECHNICAL SERVICES
- 1,747 ACCOMMODATION + FOOD SERVICES
- 1,708 HEALTH CARE + SOCIAL ASSISTANCE
- 1,058 TRANSPORTATION + WAREHOUSING
- 859 FINANCE + INSURANCE
- 784 EDUCATIONAL SERVICES

BUSINESS SECTOR TRENDS 2014-2018



NUMBER OF BUSINESSES BY SIZE OF BUSINESS**



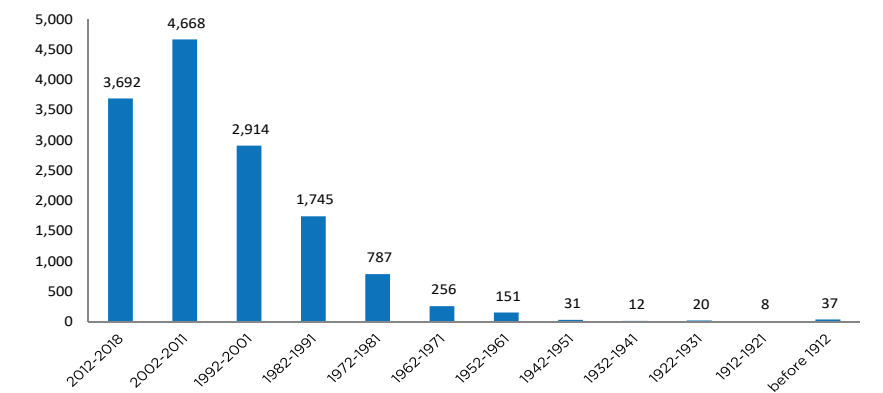
VACANCIES**

2,470 ▼ 29%

NEW BUSINESSES OR BUSINESSES THAT MOVED BETWEEN 2017 AND 2018**

2,630

NUMBER OF BUSINESSES BY YEAR ESTABLISHED BASED ON 63.7% RESPONSE



(*) - Source: Statistics Canada, Canadian Business Patterns (CBP) Database, June 2018
Businesses have a minimum of \$30,000 in annual revenue (non-taxable and/or taxable).

(**) - Source: Mississauga Employment Survey

(***) - Temporary employees are not included in Total Employment

Comparisons are based on the previous Annual Employment Survey

