

2015 EXISTING LAND USE

EXISTING LAND USE OVERVIEW

TOTAL AREA OF MISSISSAUGA
(HECTARES/ACRES)*

29,212 ha
72,185 acres

PERCENTAGE OF TOTAL OFFICE
LANDS LOCATED WITHIN
CORPORATE CENTRES

66.0%

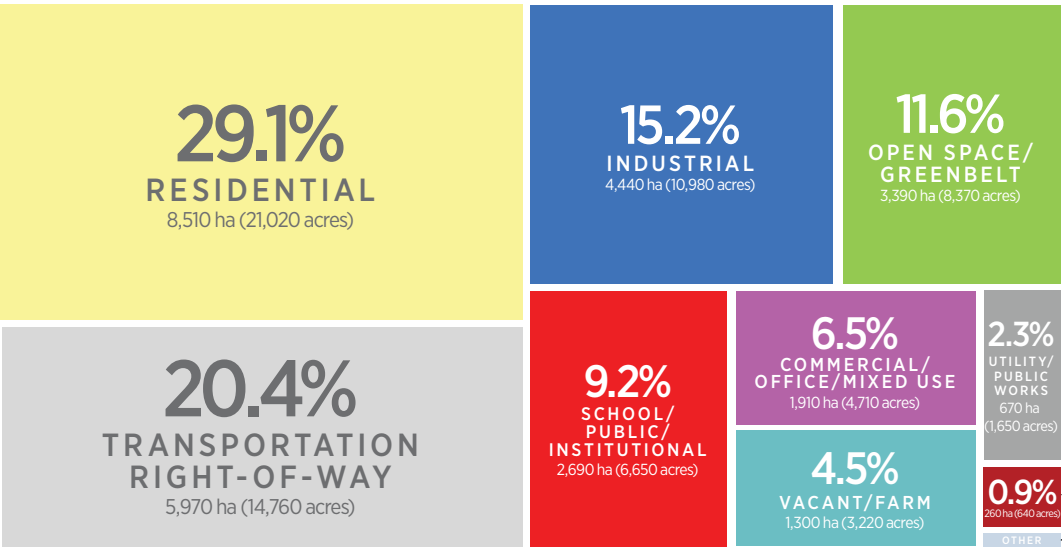
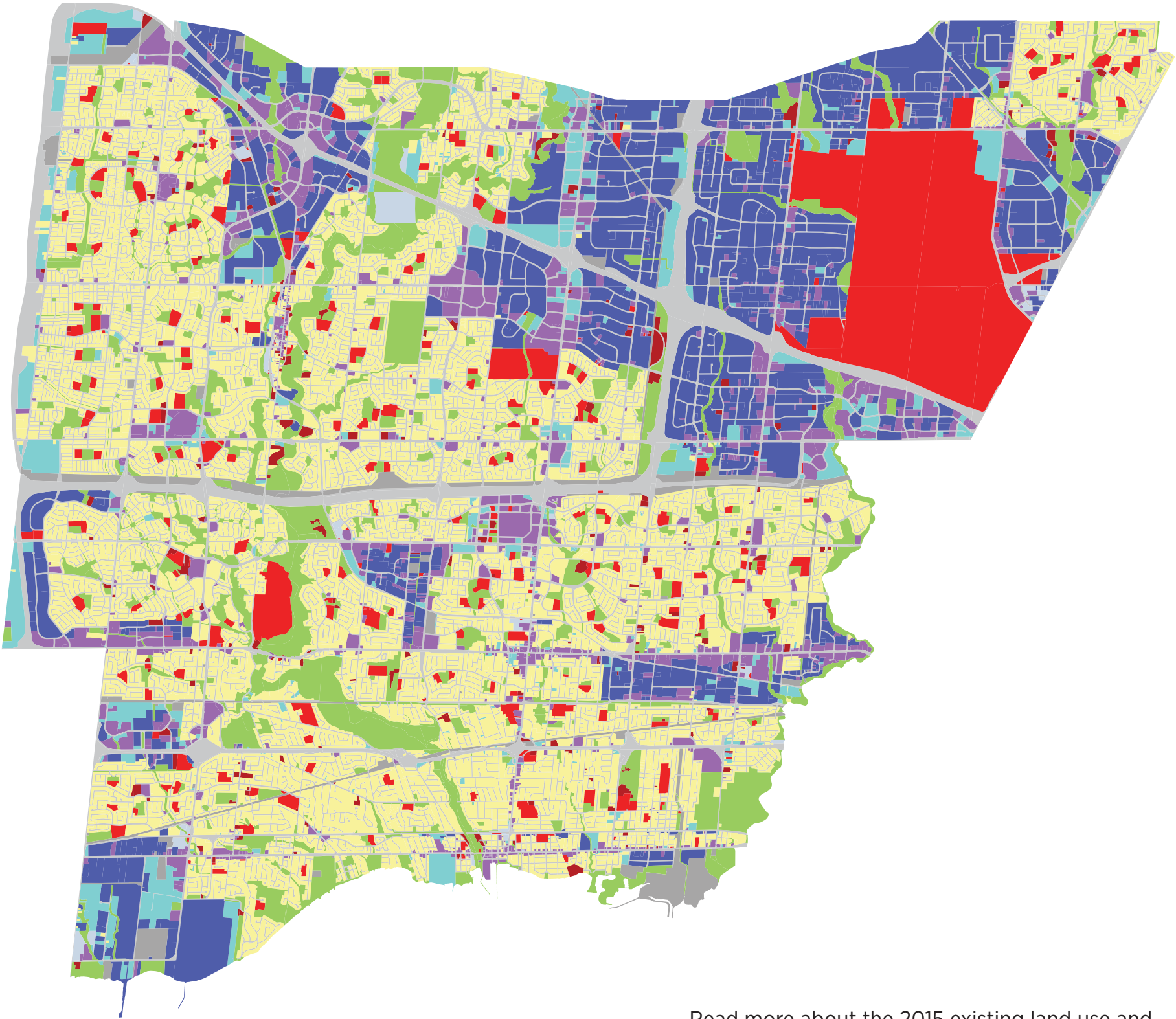
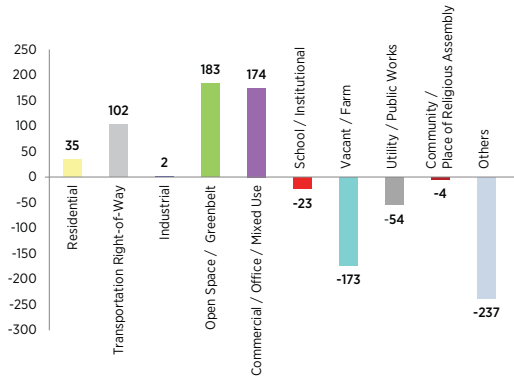
PERCENTAGE OF RESIDENTIAL
LANDS COMPRISED OF
TOWNHOUSES IN
NEIGHBOURHOODS

10.3%

PERCENTAGE OF TOTAL
VACANT LANDS LOCATED IN
DOWNTOWN MISSISSAUGA

2.9%

EXISTING LAND USE CHANGE
IN HECTARES (2008-2015)



Read more about the 2015 existing land use and view this map as a KML at mississauga.ca/data

* OVERALL TOTAL IS 1.4 HA LESS THAN LAST YEAR AS A RESULT OF SHORELINE ADJUSTMENTS