

2015 EMPLOYMENT PROFILE

EMPLOYMENT

OVERALL WORKERS EMPLOYED WITHIN MISSISSAUGA

▲ 0.7%

420,500

TOTAL EMPLOYMENT + CENSUS ADJUSTMENT

393,020 + 27,480

FULL-TIME EMPLOYMENT VS. PART-TIME

91% FULL-TIME, 9% PART-TIME

EMPLOYEES THAT WORK FROM HOME

1.2% BASED ON 88% SAMPLE SIZE

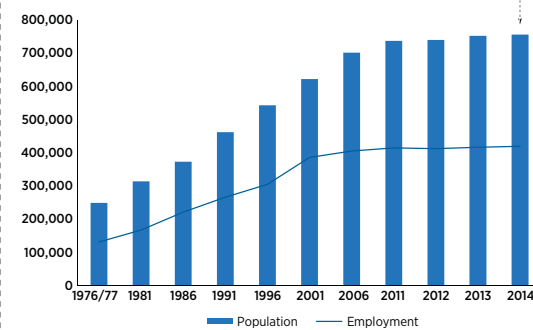
2014 TOTAL FORECASTED POPULATION

757,000 ▲ 0.5%

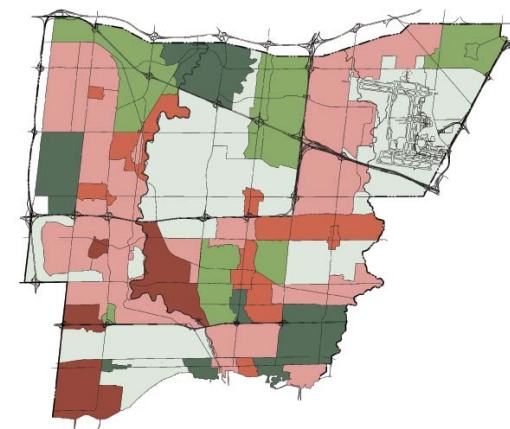
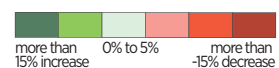
2014 EMPLOYMENT RATIO

0.56

WORKERS EMPLOYED AS A PROPORTION OF TOTAL POPULATION 1976-2014



EMPLOYMENT TRENDS 2010-2014



BUSINESSES

TOTAL NUMBER OF BUSINESSES IN MISSISSAUGA*

▲ 5.3%

62,300

NUMBER OF BUSINESSES OPERATING ON BUSINESS SITES

20,300

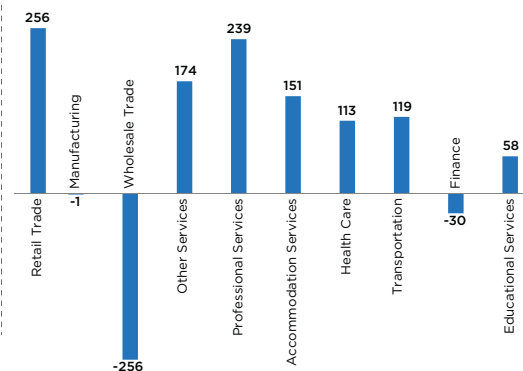
HOME-BASED BUSINESSES*

42,000

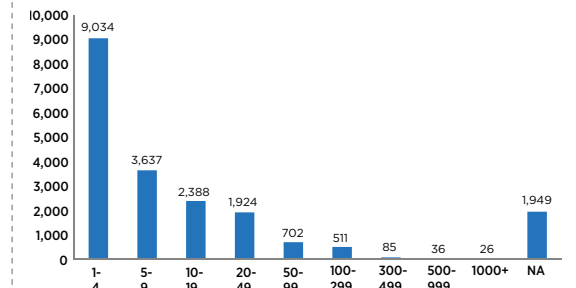
NUMBER OF BUSINESSES BY BUSINESS CLASSIFICATION FOR TOP 10 SECTORS

- 2,991 RETAIL TRADE
- 2,519 MANUFACTURING
- 2,374 WHOLESALE TRADE
- 2,269 OTHER SERVICES
- 1,759 PROFESSIONAL + TECHNICAL SERVICES
- 1,621 ACCOMMODATION + FOOD SERVICES
- 1,558 HEALTH CARE + SOCIAL ASSISTANCE
- 1,064 TRANSPORTATION + WAREHOUSING
- 745 FINANCE + INSURANCE
- 723 EDUCATIONAL SERVICES

BUSINESS SECTOR TRENDS 2010-2014



NUMBER OF BUSINESSES BY SIZE OF BUSINESS



VACANCIES

3,925 ▲ 12%

NEW BUSINESSES OR BUSINESSES THAT MOVED BETWEEN 2013 AND 2014

1,890

*Source: Statistics Canada, Canadian Business Patterns (CBP) Database, June 2014
Comparisons are based on the previous Annual Employment Survey

Download full size maps and read more about this at mississauga.ca/data

