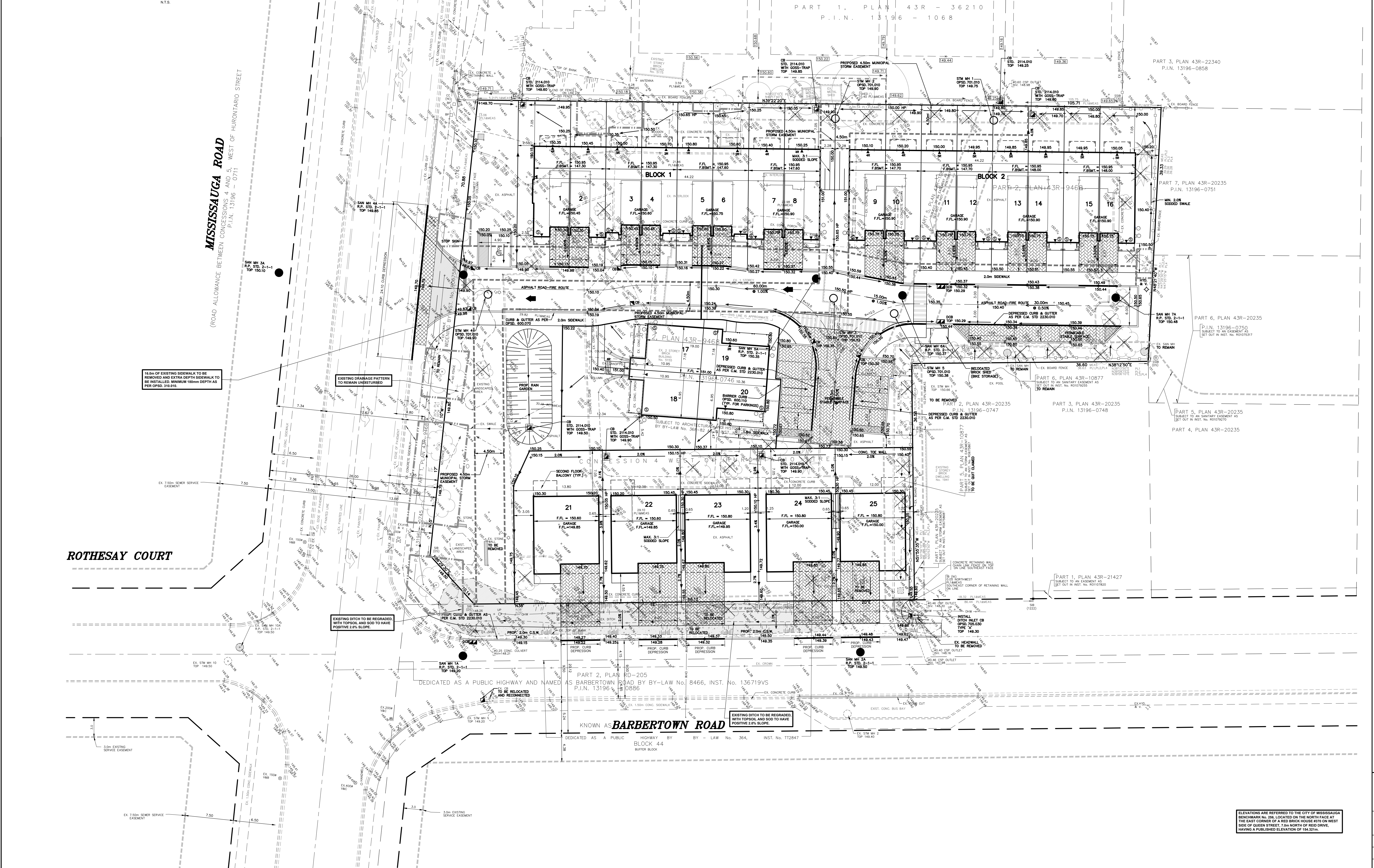


- LEGEND**
- 198.95 - EXISTING ELEVATION
 - (200.00) - EXISTING ELEVATION TO REAIN
 - 126.25 - PROPOSED ELEVATION
 - - - - - DIRECTION OF SURFACE FLOW
 - - - - - EXISTING CONTOURS
 - EXISTING OVERLAND FLOW ROUTE
 - PROPOSED OVERLAND FLOW ROUTE
 - - - - - LIMIT OF PROPERTY



SKIRA & ASSOCIATES LTD.
CONSULTING ENGINEERS
3900 Steeles Ave. East, Unit 10, Scarborough, Ontario M1V 5P9
Tel: (416) 291-0101 Fax: (416) 291-0102 Email: info@skira.com

CONCEPT SITE GRADING

PROJECT No. 215-M72
DATE - MARCH 2016
SCALE - 1:250
DRAWN BY - M.B.

FIGURE
No. 4

ELEVATIONS ARE REFERRED TO THE CITY OF MISSISSAUGA
BENCHMARK NO. 28, LOCATED ON THE NORTH FACE AT
THE EAST CORNER OF A RED BRICK HOUSE #719 ON WEST
SIDE OF QUEEN STREET 7.5m NORTH OF RED DOME,
HAVING A PUBLISHED ELEVATION OF 154.321m.