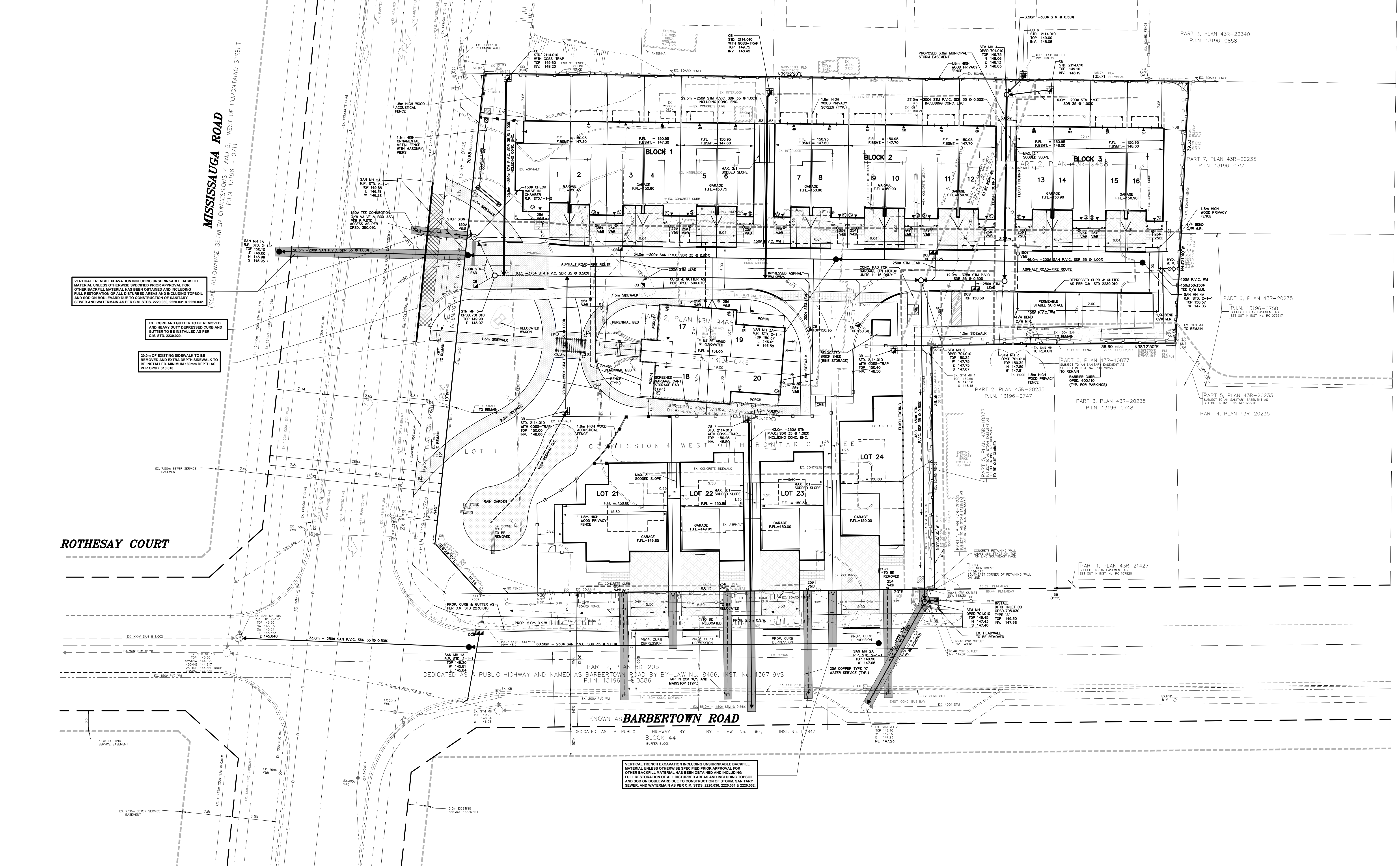


- LEGEND**
- EXISTING STORM/SANITARY SEWER
 - PROPOSED STORM/SANITARY SEWER
 - EXISTING STORM MANHOLE
 - PROPOSED STORM MANHOLE
 - EXISTING SANITARY MANHOLE
 - PROPOSED SANITARY MANHOLE
 - EXISTING WATERMAIN
 - PROPOSED WATERMAIN
 - LIMIT OF PROPERTY



VERTICAL TRENCH EXCAVATION INCLUDING UNBURNABLE BACKFILL MATERIAL UNLESS OTHERWISE SPECIFIED PRIOR APPROVAL FOR OTHER BACKFILL MATERIAL HAS BEEN OBTAINED AND INCLUDING FULL RESTORATION OF ALL DISTURBED AREAS INCLUDING TOPSOIL AND SOIL ON BOULEVARD DUE TO CONSTRUCTION OF STORM, SANITARY SEWER, AND WATERMAIN AS PER C.A. STD. 220.00, 220.01 & 220.02.

EX. CURB AND GUTTER TO BE REMOVED AND HEAVY DUTY DEPRESSION CURB AND GUTTER TO BE INSTALLED AS PER C.A. STD. 220.00.

30 CM OF EXISTING SIDEWALK TO BE REMOVED AND EXTRA DEPTH SIDEWALK TO BE INSTALLED MINIMUM 150MM DEPTH AS PER C.A. STD. 220.00.

VERTICAL TRENCH EXCAVATION INCLUDING UNBURNABLE BACKFILL MATERIAL UNLESS OTHERWISE SPECIFIED PRIOR APPROVAL FOR OTHER BACKFILL MATERIAL HAS BEEN OBTAINED AND INCLUDING FULL RESTORATION OF ALL DISTURBED AREAS INCLUDING TOPSOIL AND SOIL ON BOULEVARD DUE TO CONSTRUCTION OF STORM, SANITARY SEWER, AND WATERMAIN AS PER C.A. STD. 220.00, 220.01 & 220.02.

SKIRA & ASSOCIATES LTD.
CONSULTING ENGINEERS
3900 Steeles Ave. East, Suite 101, Scarborough, Ontario M1V 5P8
Tel: (416) 291-5100 Fax: (416) 291-1098 Email: info@skira.com

CONCEPT SITE SERVICING

PROJECT No. 215-M72
DATE - MARCH 2016
SCALE - 1:250
DRAWN BY - M.B.

FIGURE No. 3