



FRONT ELEVATION



BLOCK 3

CITY PARK (STREETSVILLE) INC.
 PROPOSED COMMON ELEMENT &
 FREEHOLD TOWNHOUSE DEVELOPMENT
 5155 MISSISSAUGA ROAD, MISSISSAUGA, ONT. L5M 2N9
 15-1276 3/32"-1/8" JAN. 2016

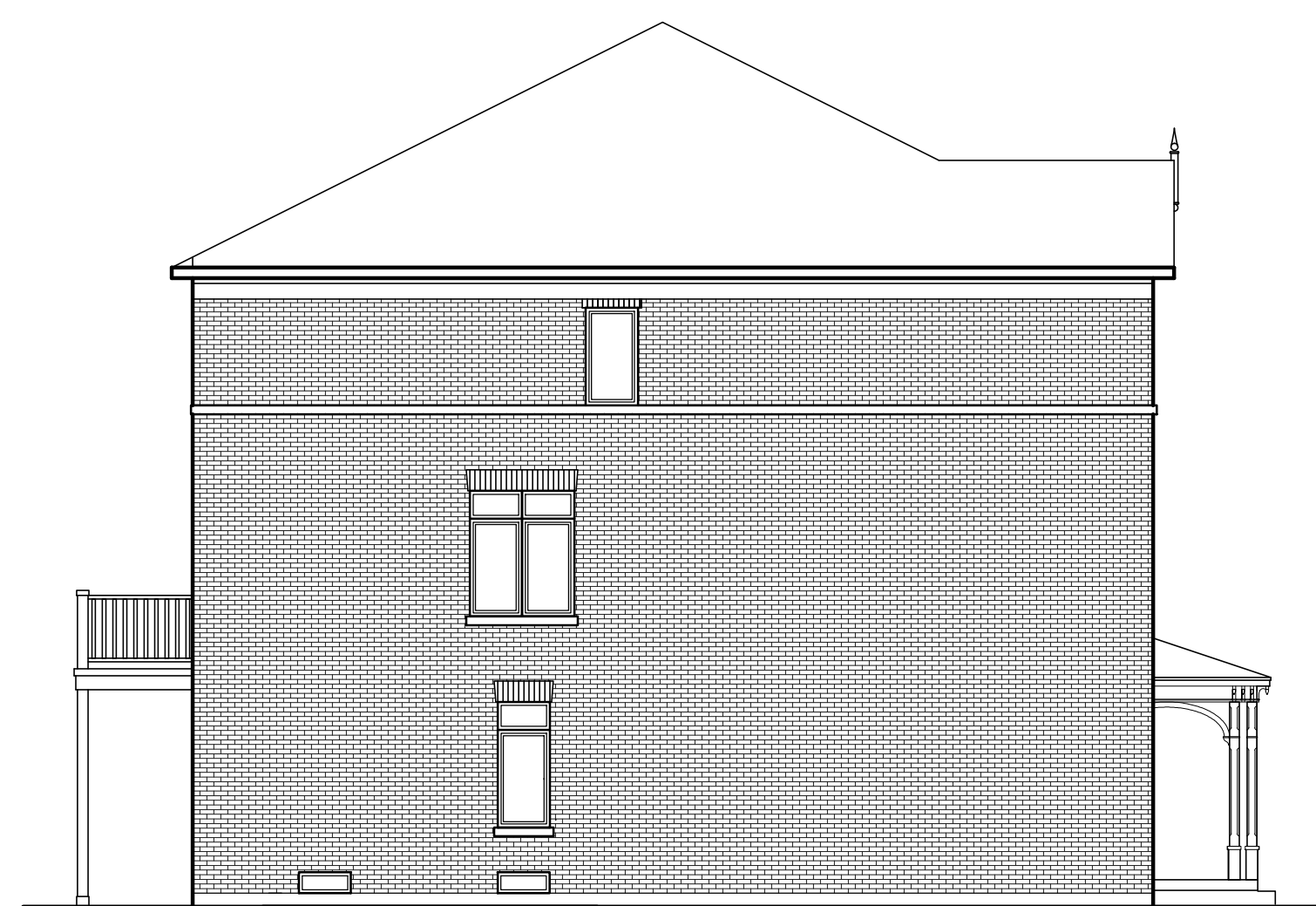


REAR ELEVATION



BLOCK 3

CITY PARK (STREETSVILLE) INC.
 PROPOSED COMMON ELEMENT &
 FREEHOLD TOWNHOUSE DEVELOPMENT
 5155 MISSISSAUGA ROAD, MISSISSAUGA, ONT. L5M 2N9
 15-1276 3/32"-1/8" JAN. 2016



TYPICAL SIDE ELEVATION

UNIT 10
UNIT TYPE A

UNIT 17
UNIT TYPE A



BLOCK 3

CITY PARK (STREETSVILLE) INC.
 PROPOSED COMMON ELEMENT &
 FREEHOLD TOWNHOUSE DEVELOPMENT
 5155 MISSISSAUGA ROAD, MISSISSAUGA, ONT. L5M 2N9
 15-1276 3/32"-1/8" JAN. 2016