



FRONT ELEVATION



BLOCK 2

CITY PARK (STREETSVILLE) INC.
 PROPOSED COMMON ELEMENT &
 FREEHOLD TOWNHOUSE DEVELOPMENT
 5155 MISSISSAUGA ROAD, MISSISSAUGA, ONT. L5M 2N9
 15-1276 332°-19" JAN. 2016

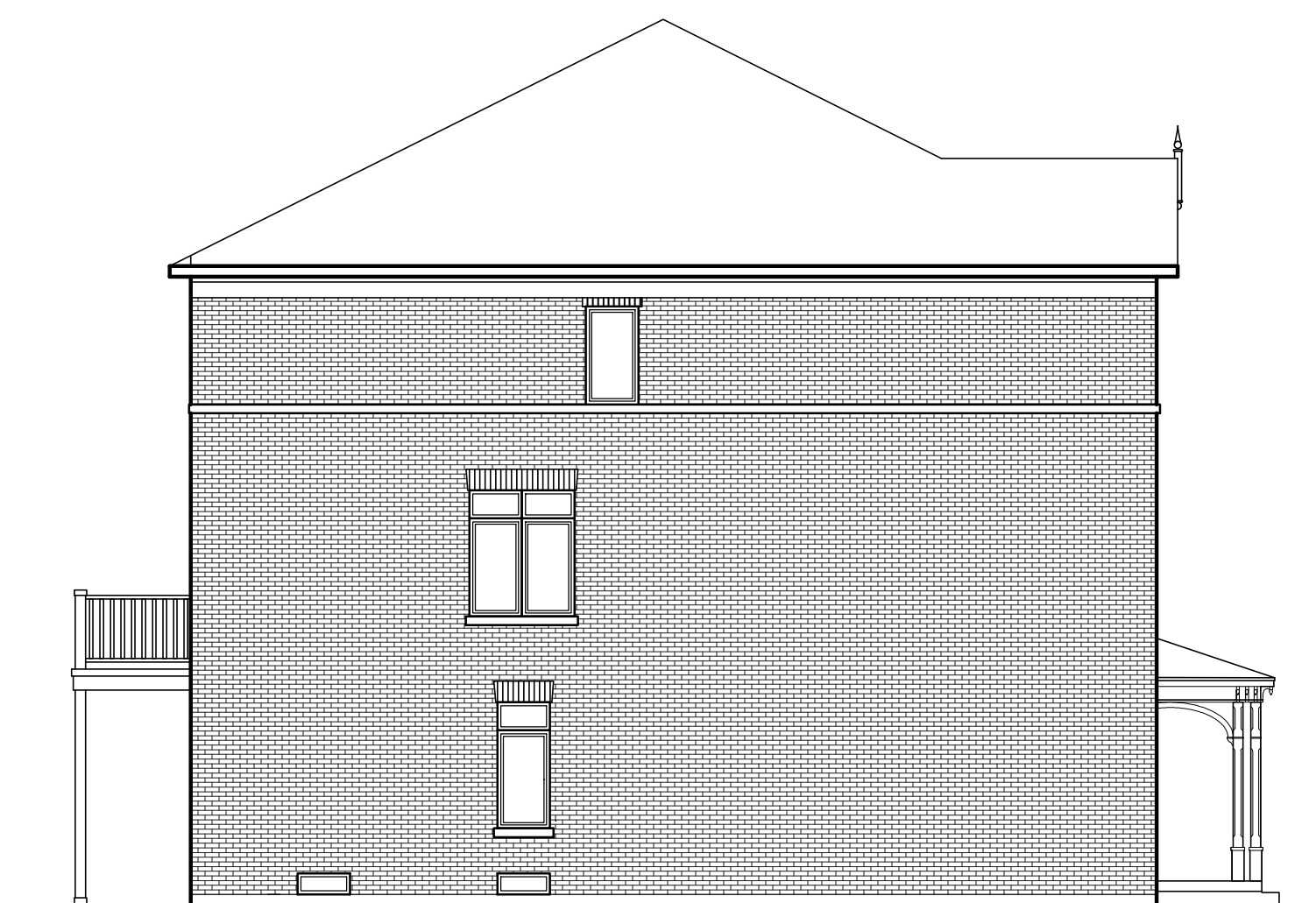


REAR ELEVATION



BLOCK 2

CITY PARK (STREETSVILLE) INC.
 PROPOSED COMMON ELEMENT &
 FREEHOLD TOWNHOUSE DEVELOPMENT
 5155 MISSISSAUGA ROAD, MISSISSAUGA, ONT. L5M 2N9
 15-1276 332°-19" JAN. 2016



TYPICAL SIDE ELEVATION

UNIT 2
UNIT TYPE A

UNIT 9
UNIT TYPE A



BLOCK 2

CITY PARK (STREETSVILLE) INC.
 PROPOSED COMMON ELEMENT &
 FREEHOLD TOWNHOUSE DEVELOPMENT
 5155 MISSISSAUGA ROAD, MISSISSAUGA, ONT. L5M 2N9
 15-1276 332°-19" JAN. 2016