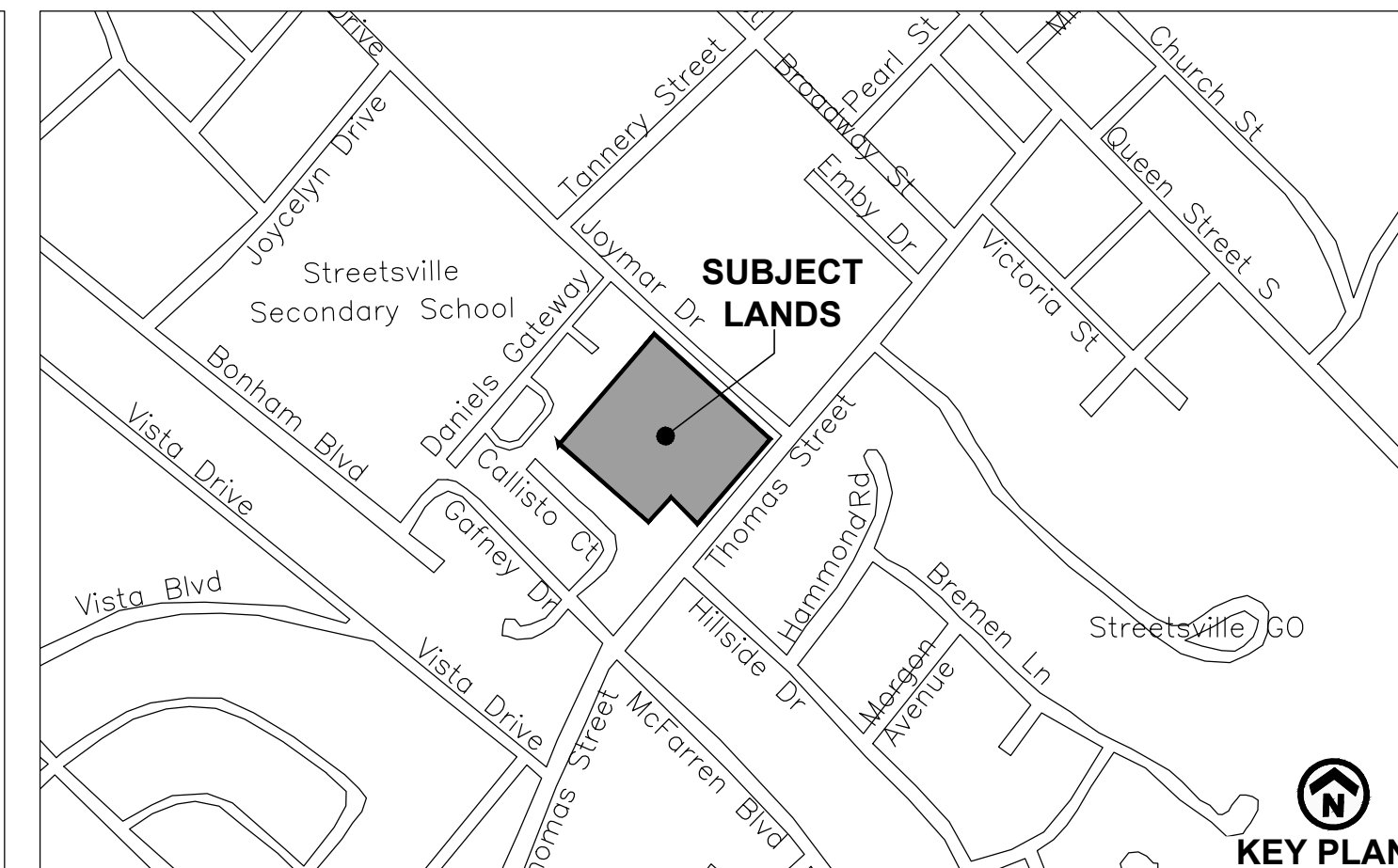


BLOCK 19753

Existing Residential



DRAFT PLAN OF SUBDIVISION
1672736 Ontario Inc.
FILE #: 95-0-16

PART LOT 4, CONCESSION 5, W.H.S.
 43R28302

CITY OF MISSISSAUGA,
 REGIONAL MUNICIPALITY OF PEEL

OWNERS CERTIFICATE

I HEREBY AUTHORIZE GLEN SCHNARR & ASSOCIATES INC. TO PREPARE AND SUBMIT THIS DRAFT PLAN OF SUBDIVISION TO THE CITY OF MISSISSAUGA FOR APPROVAL.

SIGNED _____
 JOHN ZAMINI, PRESIDENT
 1672736 ONTARIO INC.

DATE OCTOBER 25, 2016

SURVEYORS CERTIFICATE

I HEREBY CERTIFY THAT THE BOUNDARIES OF THE LANDS TO BE SUBDIVIDED AS SHOWN ON THIS PLAN AND THEIR RELATIONSHIP TO ADJACENT LANDS ARE CORRECTLY AND ACCURATELY SHOWN.

SIGNED _____
 BONEY CHERIAN, O.L.S., O.L.I.P.
 DAVID B. SEARLES SURVEYING LTD.
 ONTARIO LAND SURVEYORS
 4255 SHERWOODTOWNE BLVD., #206
 MISSISSAUGA, ON
 L4Z 1Y5

DATE OCTOBER 25, 2016

ADDITIONAL INFORMATION

(UNDER SECTION 51(17) OF THE PLANNING ACT) INFORMATION REQUIRED BY CLAUSES A,B,C,D,E,F,G,J & L ARE SHOWN ON THE DRAFT AND KEY PLANS.

- H) MUNICIPAL AND PIPED WATER TO BE PROVIDED
- I) SANDY LOAM AND CLAY LOAM
- K) SANITARY AND STORM SEWERS TO BE PROVIDED

LAND USE SCHEDULE

LAND USE	LOTS / BLOCKS	AREA (ha)	AREA (ac)	UNITS
CONDO TOWNHOUSES (REAR LANE TYPE 'A')	1-7	0.43	1.06	54
CONDO TOWNHOUSES (REAR LANE TYPE 'B')	14-16	0.19	0.47	29
CONDO TOWNHOUSES (BACK-TO-BACK)	8-13,17-26	0.56	1.38	136
COMMON ELEMENT	27- 38	1.29	3.19	
TOTAL	38	2.47	6.10	219

NOTES

- existing building to be demolished
- residential Areas calculated by ground floor area only
- delineates residential blocks above common element areas

CALLISTO COURT

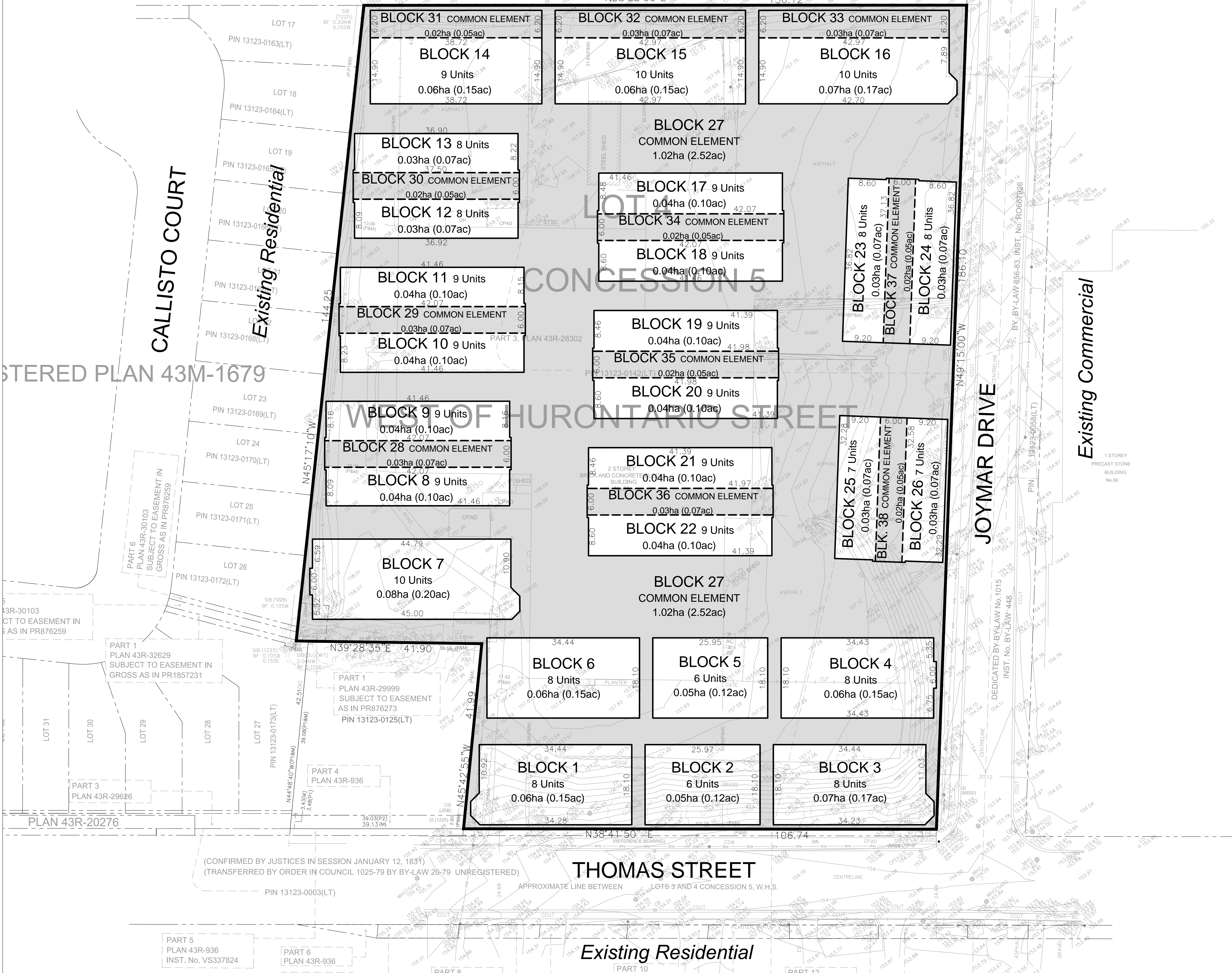
Existing Residential

Existing Commercial

JOYMAR DRIVE

THOMAS STREET

Existing Residential



PART 5
 PLAN 43R-936
 INST. No. VS337824

PART 6
 PLAN 43R-936

SCALE 1:400
 (24 x 36)
 October 25, 2016

GLEN SCHNARR & ASSOCIATES INC.
 URBAN & REGIONAL PLANNERS, LAND DEVELOPMENT CONSULTANTS
 SUITE 700 10 KINGSBRIDGE GARDEN CIRCLE
 MISSISSAUGA, ONTARIO, L5R 3K6
 TEL (905) 568-8888 FAX (905) 568-8894 www.gsal.ca