

---

## **Traffic Safety Council**

### **Date**

2016/03/23

### **Time**

5:00 P.M.

### **Location**

Hearing Room, 2<sup>nd</sup> Floor, Civic Centre  
300 City Centre Drive, Mississauga, ON L5B 3C1

### **Members**

Councillor Sue McFadden, Ward 10  
Councillor Chris Fonseca, Ward 3  
Councillor John Kovac, Ward 4  
Sandra Beniuk, Citizen Member  
Robert Crocker, Peel District School Board Trustee  
Tamara Coulson, Citizen Member  
Louise Goegan, Citizen Member  
Denise Gordon-Mohamud, Citizen Member  
Sushil Kumra, Citizen Member  
Heather Relf, Citizen Member (Vice-Chair)  
Ajay Sharma, Citizen Member  
Mashkoor Sherwani, Citizen Member  
Daniel Suess, Citizen Member  
Boris Swedak, Life Member  
Altamash Syed, Citizen Member  
Thomas Thomas, Dufferin-Peel Catholic District School Board Trustee  
Katherine Vukobrat, Citizen Member  
Peter Westbrook, Citizen Member (Chair)

---

**ADVISORY BOARD**

Andy Bate, Supervisor, Traffic Operations

Sheelagh Duffin, Supervisor, Crossing Guards

Daniel Elias, Principals/Vice-Principals Association Peel District School Board

Barry Foley, Manager, Parking Enforcement

Anna Gentile/ Marcy Macina - Central Planning and Operations Officer, Student Transportation of Peel Region (STOPR)

Anna Capuano, Principals/Vice-Principals Association Dufferin-Peel Catholic District School Board

Alex Liya, Traffic Operations Technician

Tim Murphy, Peel Regional Police

Denna Yaunan, Traffic Operations Technician

Erica Warsh, Transportation Demand Management Coordinator

**Contact**

Angie Melo, Legislative Coordinator, Legislative Services

905-615-3200 ext. 5423/Fax 905-615-4181/Email: [angie.melo@mississauga.ca](mailto:angie.melo@mississauga.ca)

**Find it Online**

<http://www.mississauga.ca/portal/cityhall/trafficsafetycouncil>

INDEX – TRAFFIC SAFETY COUNCIL – March 23, 2016CALL TO ORDERDECLARATIONS OF DIRECT (OR INDIRECT) PECUNIARY INTERESTPRESENTATIONS / DEPUTATIONS

Max Gill, Traffic Operations Technologist, with respect to Traffic Calming Program and Policy

MATTERS TO BE CONSIDERED

1. Approval of January 27, 2016 Minutes
2. Site Inspection Report – Edenrose Public School (Ward 6)
3. Site Inspection Report – Plum Tree Park Public School (Ward 9)
4. Site Inspection Reports – St. Veronica Catholic School and David Leeder Middle School (Ward 11)
5. Site Inspection Report – Sheridan Park Public School (Ward 2)
6. Site Inspection Reports – Silverthorn Public School (Ward 3)
7. Site Inspection Requests
8. Parking Enforcement School Zones Reports for January and February 2016
9. Transportation and Works Action Items List January 2016
10. 66<sup>th</sup> Annual Ontario Traffic Council Conference (May 15 – 17, 2016)
11. Traffic Safety Council and Mississauga Cycling Advisory Committee Collaboration
12. Peel District School Board Representation on Traffic Safety Council
13. Dufferin-Peel Catholic District School Board Representation on Traffic Safety Council

CALL TO ORDERDECLARATIONS OF DIRECT (OR INDIRECT) PECUNIARY INTERESTPRESENTATIONS / DEPUTATIONS

Max Gill, Traffic Operations Technologist, with respect to Traffic Calming Policy

MATTERS TO BE CONSIDERED

1. Approval of January 27, 2016 Minutes

Minutes of the Traffic Safety Council meeting held on January 27, 2016

RECOMMEND APPROVAL

2. Site Inspection Report – Edenrose Public School (Ward 6)

Site Inspection Report for the inspection conducted on March 3, 2016 at 1342 Edenrose Street in front of Edenrose Public School.

RECOMMENDATION

1. That the request for a crossing guard at the driveway of Edenrose Public School be denied as the warrants are not met.
2. That Transportation and Works be requested to review the following:
  - a. Review signage on Edenrose Street, in front of Edenrose Public School.
  - b. Review the feasibility of installing speed boards, in the spring 2016, on Edenrose Street, for the students attending Edenrose Public School.
3. That Parking Enforcement be requested to enforce all "No Stopping/No Parking" violations between 8:40 a.m. to 9:00 a.m., and 2:50 p.m. to 3:15 p.m., on Edenrose Street, for students attending Edenrose Public School, once signage is in place.
4. That Peel Regional Police be requested to enforce speeding, passing, and no U-turn violations on Edenrose Street for students attending Edenrose Public School, between 8:40 a.m. to 9:00 a.m., and 3:10 p.m. to 3:30 p.m.
5. That the Peel District School Board be requested to review the following:
  - a. The operation of the Kiss & Ride area
  - b. Consider extending the Kiss & Ride area to include the staff parking lot on the west side of Edenrose Public School.

RECOMMEND APPROVAL

3. Site Inspection Report – Plum Tree Park Public School (Ward 9)

Site Inspection Report for the inspection conducted on March 9, 2016 at the intersection of Derry Road and Tenth Line for the students attending Plum Tree Park Public School.

RECOMMENDATION

That the request for a crossing guard at the intersection of Derry Road and Tenth Line for the students attending Plum Tree Park Public School, be denied as the warrants are not met.

RECOMMEND APPROVAL

4. Site Inspection Reports – St. Veronica Catholic School and David Leeder Middle School (Ward 11)

Site Inspection Reports for the inspections conducted on March 4, 2016 at the intersections of McLaughlin Road and Novo Star Drive/Arrowsmith Drive, and at Mavis Road and Crawford Mill Avenue/Novo Star Drive for the students attending St. Veronica Catholic School and David Leeder Middle School.

RECOMMENDATION

1. That Transportation and Works be requested to ensure that the traffic signals across Mavis Road and at McLaughlin Road are at a slow walking speed for September 2016, as the Student Transportation of Peel Region will no longer provide school bus services for students attending St. Veronica Catholic School and David Leeder Middle School effective September 2016.
2. That the Principals of St. Veronica Middle School and David Leeder Middle School be requested to remind their students to always activate the pedestrian signal button before crossing Mavis Road and McLaughlin Road.

RECOMMEND APPROVAL

5. Site Inspection Report – Sheridan Park Public School (Ward 2)

Site Inspection Report for the inspection conducted on March 10, 2016 in the vicinity of Thorn Lodge Drive and Perran Drive, for the students attending Sheridan Park Public School.

RECOMMENDATION

1. That the request to change the current location of the crossing guard, for students attending Sheridan Park Public School, be denied as the current crossing guard location works well and is strategically placed.

2. That Parking Enforcement be requested to enforce all No Stopping/No Parking prohibitions between 3:20 p.m. and 3:40 p.m., in the vicinity of Thorn Lodge Drive and Perran Drive for the students attending Sheridan Park Public School.
3. That Transportation and Works be requested to review the signage in the vicinity of Thorn Lodge Drive and Perran Drive for the students attending Sheridan Park Public School.

#### RECOMMEND APPROVAL

#### 6. Site Inspection Reports – Silverthorn Public School (Ward 3)

Site Inspection Reports for the site inspections conducted on Breckenridge Drive and Cedar Creek Drive, and at 3535 Cedar Creek Drive in front of Silverthorn Public School.

#### RECOMMENDATION

1. That the request for a crossing guard at the intersection of Breckenridge Drive and Cedar Creek Drive for the students attending Silverthorn Public School be denied as the warrants are not met.
2. That the request for a crossing guard 3535 Cedar Creek Drive, in front of Silverthorn Public School be denied as the warrants are not met.
3. That the Principal of Silverthorn Public School be requested to:
  - a. Ensure that school staff/volunteers are in place when students are being loaded onto the school bus.
  - b. Review the Kiss & Ride operation and ensure that school staff/volunteers are manning the area during the prescribed time of the Kiss & Ride operation.

#### RECOMMEND APPROVAL

#### 7. Site Inspection Requests

- 7.1 Email dated February 23, 2016 from Nancy, resident, requesting the implementation of a crossing guard at Tomken Road and Runningbrook Drive, for the students attending Blessed Teresa of Calcutta School.
- 7.2 Email dated March 2, 2016 from Councillor Fonseca, on behalf of a resident, requesting a site inspection at the intersection of Fieldgate Drive and Bough Beeches Blvd. for the students attending Saints. Martha & Mary Catholic School.
- 7.3 Email dated March 17, 2016 from Sheelagh Duffin, on behalf of a resident, requesting a site inspection at the intersection of Barondale Drive and Cortina Crescent for students attending Barondale Public School.

#### RECOMMEND RECEIPT/REFERRAL

8. Parking Enforcement in School Zones Reports – January and February 2016

Reports from the Manager of Parking Enforcement with respect to parking enforcement in school zones for January and February 2016.

RECOMMEND RECEIPT

9. Transportation and Works Action Items List – January 2016

Action Items List from Transportation and Works for the month of January 2016.

RECOMMEND RECEIPT

10. 66<sup>th</sup> Ontario Traffic Council Annual Conference

An invitation to members of Traffic Safety Council to attend the Ontario Traffic Council's 2014 Conference on May 15 – 17, 2016, at the Horseshoe Resort, Barrie, Ontario. In the past, three (3) citizen members of Traffic Safety Council attended. Please advise at the meeting of your interest in attending.

DIRECTION REQUIRED

11. Traffic Safety Council and Mississauga Cycling Advisory Committee Collaboration

Peter Westbrook, Chair of the Traffic Safety Council will provide an overview on the discussion between some Members of the Traffic Safety Council and of the Mississauga Cycling Advisory Committee regarding a joint Walk and Bike to School initiative.

RECOMMEND RECEIPT/REFERRAL/DIRECTION

12. Peel District School Board Representation on Traffic Safety Council

Letter dated December 10, 2015 from the Director of Education, Peel District School Board advising that Robert Crocker, Trustee, Wards 6 & 11, was appointed as the Board's representative to the Traffic Safety Council, and that Nokha Dakroub, Trustee, Wards 9 & 10 was also appointed as the alternate representative to the Traffic Safety Council.

RECOMMEND RECEIPT

13. Dufferin-Peel Catholic District School Board Representation on Traffic Safety Council

Letter dated February 22, 2016 from the Director of Education, Dufferin-Peel Catholic District School Board advising that Thomas Thomas, Trustee, Ward 5, was appointed as the Board's representative to the Traffic Safety Council

RECOMMEND RECEIPTOTHER BUSINESS

Date of Next Meeting: April 27, 2016

ADJOURNMENT



---

## Traffic Safety Council

### Date

2016/01/27

### Time

5:00 p.m.

### Location

Hearing Room, 2<sup>nd</sup> Floor, Civic Centre  
300 City Centre Drive, Mississauga, ON L5B 3C1

### Members Present

Councillor Chris Fonseca, Ward 3 (arrived at 5:15 p.m.)  
Councillor John Kovac, Ward 4 (arrived at 5:22 p.m.)  
Sandra Beniuk, Citizen Member  
Robert Crocker, Peel District School Board Trustee  
Tamara Coulson, Citizen Member  
Louise Goegan, Citizen Member  
Denise Gordon-Mohamud, Citizen Member  
Heather Relf, Citizen Member (Vice-Chair)  
Mashkoor Sherwani, Citizen Member  
Daniel Suess, Citizen Member  
Altamash Syed, Citizen Member  
Katherine Vukobrat, Citizen Member  
Peter Westbrook, Citizen Member (Chair)

### Members Absent

Councillor Sue McFadden, Ward 10  
Thomas Thomas, Dufferin-Peel Catholic District School Board Trustee  
Ajay Sharma, Citizen Member  
Boris Swedak, Life Member

**Advisory Board Present**

Alex Liya, Traffic Operations Technician

Denna Yaunan, Traffic Operations Technician

Cst. Yevgeniy Li, Peel Regional Police, 12 Division

**Contact**

Angie Melo, Legislative Coordinator, Legislative Services

905-615-3200 ext. 5423/ Fax 905-615-4181/ Email [angie.melo@mississauga.ca](mailto:angie.melo@mississauga.ca)

**Find it online**

<http://www.mississauga.ca/portal/cityhall/trafficsafetycouncil>

CALL TO ORDER 5:26 p.m.

DECLARATIONS OF CONFLICT OF INTEREST - NIL

PRESENTATIONS / DEPUTATIONS – NIL

Ivana Di Millo, Director, Communications, Shawn Slack, Director, IT, and Wendy McClymont, Manager, 311 Citizen Contact Centre, with respect to Pingstreet City Application.

Ivana Di Millo spoke to the mobile application Pingstreet which was launched in the fall of 2015, providing users real-time access. Ms. Di Millo noted that this application makes it easier for citizen's to report a problem, such as sidewalk damage, request a temporary parking permit, direct link to waste collection schedule, Mayor and Ward Councillors' contact information, upcoming events and meetings, and latest news. Submissions and access through the mobile application is available 24/7.

Shawn Slack spoke to the real-time interface with the back end system. Mr. Slack noted that submissions made through the Pingstreet mobile application are processed in real-time as it interfaces with the back end system. One of the features of the Pingstreet mobile application is the ability to attach photographs, which makes it easier to identify the problem.

Wendy McClymont spoke to the advantages of the application with respect to requesting a temporary parking permit in that users can be standing right by their vehicle and submit their request, and that the information is immediately dispatched to parking enforcement officer's devices. Users who make a submission through Pingstreet are provided a notification number, which can be used for tracking the status of the submission. Ms. McClymont also spoke to the successes of Pingstreet in that there were approximately 160 submissions through Pingstreet for parking permits in the first month.

Ms. Di Millo advised that they are looking for suggestions of other uses to put more value to citizens.

RECOMMENDATION

That the PowerPoint Presentation regard Pingstreet Application as presented by Ivana Di Millo, Director, Communications, Shawn Slack, Director, IT, and Wendy McClymont, Manager, 311 Citizen Contact Centre, be received for information

Approved (T. Coulson)

Recommendation TSC-0001-2016

MATTERS TO BE CONSIDERED1. Approval of November 25, 2015 Minutes

Correction to item #7 on the November 25, 2015 meeting Minutes were noted.

Approved as amended (L. Goegan)

2. Site Inspection Report – Munden Park Public School (Ward 7)

Site Inspection Report for the safety review conducted on December 8, 2015 at the bridge in Camilla Park over the Cooksville Creek for the students attending Munden Park Public School.

RECOMMENDATION

That the Site Inspection Report for the safety review conducted on December 8, 2015 at the bridge in Camilla Park over the Cooksville Creek for the students attending Munden Park Public School, be received for information.

Approved (S. Kumra)

Recommendation TSC-0002-2016

3. Site Inspection Report – St. Basil Catholic School (Ward 3)

Site Inspection Report for the site inspection conducted on December 10, 2015 at 4235 Golden Orchard Drive in front of St. Basil Catholic School.

Members discussed the signage concerns in the St. Basil Catholic School area, and agreed that as a result of the recommendation for Transportation and Works Department to review the signage and report back to the Traffic Safety Council, that this matter would be placed on a future agenda to be discussed further.

RECOMMENDATION

1. That Transportation and Works be requested to review the signage in the St. Basil Catholic School area as follows:
  - a. Changing "No Parking" signs at the school entrance and exit driveway to "No Stopping" signs;
  - b. Adding more "No U Turn" signs to create No U Turn zones;
  - c. Replace "No Stopping" signs opposite the school with "No Stopping" Monday to Friday between 8:00 a.m. to 4:00 p.m. September to June; and
  - d. Add more "No Stopping" signs for better visibility.

2. That Parking Enforcement be requested to enforce all parking and stopping prohibitions from 8:20 a.m. to 8:45 a.m., and 3:05 p.m. to 3:30 p.m., once signage is in place for the students attending St. Basil Catholic School.
3. That Peel Regional Police be requested to enforce "No U Turn" violations from 8:20 a.m. to 8:45 a.m. and 3:05 p.m. to 3:30 p.m., for the students attending St. Basil Catholic School.
4. That the Student Transportation of Peel Region be requested to relocate the school bus stops currently located at the south leg of Greybrook Crescent and the entrance driveway to St. Basil Catholic School.
5. That the Dufferin-Peel Catholic District School Board consider reviewing staffing and operation of the Kiss & Ride area at St. Basil Catholic School.

Approved (Councillor C. Fonseca)  
Recommendation TSC-0003-2016

4. Site Inspection Report – Brian W. Fleming Public School (Ward 3)

Site Inspection Report for the site inspection conducted on December 15, 2015 at 3255 Havenwood Drive for the students attending Brian W. Fleming Public School.

Councillor Fonseca advised that she has had residents express their concerns with respect to the operation of the Kiss & Ride area at Brian W. Fleming Public School, and that the Peel District School Board be requested to review the operation of the Kiss & Ride area at the school.

RECOMMENDATION

1. That Parking Enforcement be requested to enforce parking prohibitions between 3:10 p.m. and 3:45 p.m. on Havenwood Drive, for the students attending Brian W. Fleming Public School.
2. That the Transportation and Works Department be requested to review signage in the area for students attending Brian W. Fleming Public School.
3. That the Peel District School Board consider reviewing the staffing and operation of the Kiss & Ride area at Brian W. Fleming Public School.

Approved (Councillor C. Fonseca)  
Recommendation TSC-0004-2016

5. Site Inspection Report – St. Christopher Catholic School, Hillcrest Middle School, Whiteoaks Public School and Lorne Park Secondary School (Ward 2)

Site Inspection Report for the site inspection and safety review conducted on January 11, 2016 at the intersection of Clarkson Road and Birchwood Drive, for the students attending St. Christopher Catholic School, Hillcrest Middle School, Whiteoaks Public School and Lorne Park Secondary School.

RECOMMENDATION

1. That the request for a crossing guard at the intersection of Clarkson Road and Birchwood Drive, for the students attending St. Christopher Catholic School and Whiteoaks Public School, be denied as the warrants are not met.
2. That the City of Mississauga, Ward 2 -Councillor be requested to consider conducting a survey of area residents living on the east side of Clarkson Road to determine if they are in favour of a sidewalk being constructed on the east side of Clarkson Road, for students attending St. Christopher Catholic School, Hillcrest Middle School, Whiteoaks Public School and Lorne Park Secondary School.
3. That the Transportation and Works Department be requested to conduct a speed study on Clarkson Road in the area of Birchwood Drive in order to determine if traffic calming measures should be recommended, for the students attending St. Christopher Catholic School, Hillcrest Middle School, Whiteoaks Public School and Lorne Park Secondary School.

Approved (S. Beniuk)

Recommendation TSC-0005-2016

6. Site Inspection Report – Fairview Public School (Ward 7)

Site Inspection Report for the site inspection conducted on January 14, 2016 at the east leg at Duke of York Boulevard, and Webb Drive for the students attending Fairview Public School.

RECOMMENDATION

1. That the request for a crossing guard at the east leg of Duke of York Boulevard and Webb Drive, for students attending Fairview Public School, be denied as the warrants are not met.
2. That the Traffic Safety Council be requested to re-inspect existing crossing at the west leg of Duke of York Boulevard and Webb Drive to determine if the warrants continue to be met.

Approved (L. Goegan)

Recommendation TSC-0006-2016

7. Site Inspection Report – Corliss Public School (Ward 5)

Site Inspection Report for the site inspection conducted on January 19, 2016 at the intersection of Sigsbee Drive and Brandon Gate Drive, north leg, for the students attending Corliss Public School.

RECOMMENDATION

That the request for a crossing guard at the intersection of Brandon Gate Drive and Sigsbee Drive, north leg, for the students attending Corliss Public School, be denied as the warrants are not met.

Approved (L. Goegan)

Recommendation TSC-0007-2016

8. Site Inspection Request – St. Veronica Catholic School and David Leeder Middle School (Ward 11)

An email dated January 7, 2016 from Anna Gentile, from Student Transportation of Peel Region requesting a safety review at the intersection of Mavis Road and Crawford Mill Avenue/Novo Star Drive, and, at the intersections of McLaughlin Road and Novo Star Drive/Arrowsmith Drive from 8:00 a.m. to 8:40 a.m. and from 2:10 p.m. to 3:30 p.m.

RECOMMENDATION

That the email dated January 7, 2016 from Anna Gentile, from Student Transportation of Peel Region requesting a safety review at the intersection of Mavis Road and Crawford Mill Avenue/Novo Star Drive, and, at the intersections of McLaughlin Road and Novo Star Drive/Arrowsmith Drive from 8:00 a.m. to 8:40 a.m. and from 2:10 p.m. to 3:30 p.m. be received and referred to the Traffic Safety Council Site Inspection Subcommittee for a report back to Traffic Safety Council.

Approved (S. Beniuk)

Recommendation TSC-0008-2016

9. Parking Enforcement in School Zones for November and December 2015

Report from the Manager of Parking Enforcement with respect to parking enforcement in school zones for November and December 2015.

RECOMMENDATION

That the report from the Manager of Parking Enforcement with respect to parking enforcement in school zones for November and December 2015 be received for information.

Approved (Councillor J. Kovac)

Recommendation TSC-0009-2016

10. Transportation and Works Action Items List – November 2015

Action Items List from the Transportation and Works Department for the month of November 2015.

RECOMMENDATION

That the Action Items List from the Transportation and Works Department for the month of November 2015 be received for information.

Approved (D. Suess)

Recommendation TSC-0010-2016

11. Walk to School Subcommittee Minutes – January 13, 2016

Minutes of the Walk to School Subcommittee meeting on January 13, 2016.

RECOMMENDATION

That the Minutes of the Walk to School Subcommittee meeting on January 13, 2016, be received.

Approved (H. Relf)

Recommendation TSC-0011-2016

Louise Goegan, Chair of the Walk to School Subcommittee, advised that supply of "Frequent Walker" cards, supplied to schools who participate in the Walk to School Program, is low, and that it is necessary to have more printed.

RECOMMENDATION

That the amount of up to \$1,500 be approved to cover the costs of printing materials used for the Walk to School Program.

Approved (H. Relf)

Recommendation TSC-0012-2016



12. Public Information Subcommittee Minutes – January 22, 2016

That the Minutes of the Public Information Subcommittee meeting on January 22, 2016, be received.

Approved (A. Syed)

Recommendation TSC-0013-2016

Heather Relf, Chair, Public Information Subcommittee, advised that at the Public Information Subcommittee meeting on January 22, 2016, the Subcommittee Members reviewed and discussed the nominations for the Dr. Arthur Wood Safety Award and that Judy Richards, Principal at Oscar Peterson, was selected as the recipient of the 2015 Dr. Arthur Wood Safety Award.

RECOMMENDATION

That the Judy Richards, Principal of Oscar Peterson Public School, be named the recipient of the 2015 Dr. Arthur Wood Safety Award.

Approved (D. Gordon-Mohamud)

Recommendation TSC-0014-2016

OTHER BUSINESS

Date of Next Meeting January 27, 2016

ADJOURNMENT 6:25 p.m.

# Site Inspection Report



Corporate Services  
Office of the City Clerk

2

<b>Site</b>	
School: Edenrose Public School	Address: 1342 Edenrose St. Mississauga ON L5V1K9
School Times: 8:55 AM 3:25 PM	Student Population: 770
No. of School Buses: 336	Based
School:	Address:
School Times:	AM PM
Student Population:	
No. of School Buses:	

Location: (Please identify the location with reference to nearest intersection. Indicate nearest school and address)			
In front of 1342 Edenrose St. @ Edenrose Public School			
Date of Inspection: 2016 03 03	Inspection Time: 8:25 AM 3:25 PM	Requested By: public health nurse	
Prepared By: V. Mansour	Request For: crossing guard		

<b>Observers</b>	
File Number: RT.10	Ward: Ward 6
Observed By: S. Duffin	<input type="checkbox"/> AM <input type="checkbox"/> PM <input checked="" type="checkbox"/> AM & PM
Observed By: V. Mansour	<input type="checkbox"/> AM <input type="checkbox"/> PM <input checked="" type="checkbox"/> AM & PM
Observed By: T. Coulson	<input type="checkbox"/> AM <input type="checkbox"/> PM <input checked="" type="checkbox"/> AM & PM
Observed By: A. Syed	<input checked="" type="checkbox"/> AM <input type="checkbox"/> PM <input type="checkbox"/> AM & PM
Observed By: H. Relf	<input type="checkbox"/> AM <input checked="" type="checkbox"/> PM <input type="checkbox"/> AM & PM
Observed By:	<input type="checkbox"/> AM <input type="checkbox"/> PM <input type="checkbox"/> AM & PM

<b>Details</b>	
Weather Conditions:	AM: <input checked="" type="checkbox"/> Dry <input type="checkbox"/> Sunny <input type="checkbox"/> Rain <input type="checkbox"/> Snow <input type="checkbox"/> Other:
	PM: <input checked="" type="checkbox"/> Dry <input type="checkbox"/> Sunny <input type="checkbox"/> Rain <input type="checkbox"/> Snow <input type="checkbox"/> Other:
Type of Crossing:	<input type="checkbox"/> 4 Way Intersection <input type="checkbox"/> 3 Way Intersection <input checked="" type="checkbox"/> Midblock (i.e., not an intersection)
Type of Control:	<input type="checkbox"/> Traffic Lights <input type="checkbox"/> Yield Signs <input checked="" type="checkbox"/> No Control
	<input type="checkbox"/> Stop Signs (Traffic is stopped on one street only) <input type="checkbox"/> All Way Stop (Traffic is stopped in all directions)

<b>Site Conditions</b>	
School Signs:	<input checked="" type="checkbox"/> School Area Signs <input type="checkbox"/> School Crossing Signs <input checked="" type="checkbox"/> Parking/Stopping Prohibition
Posted Speed Limit:	<input checked="" type="checkbox"/> 40 km/hr <input type="checkbox"/> 50 km/h <input type="checkbox"/> 60 km/hr <input type="checkbox"/> Other:
Visibility of Crossing Pedestrians:	<input type="checkbox"/> Poor <input type="checkbox"/> Fair <input checked="" type="checkbox"/> Good Comments:
Sight Obstructions:	<input type="checkbox"/> Hedges <input type="checkbox"/> Trees <input type="checkbox"/> Fences <input type="checkbox"/> Bus Shelter
	<input type="checkbox"/> Newspaper Boxes <input type="checkbox"/> Other (Specify):
Road Grade:	<input type="checkbox"/> Flat <input type="checkbox"/> Incline <input type="checkbox"/> Decline
Road Geometrics:	<input type="checkbox"/> Straight <input type="checkbox"/> Curved Comments:
Road Width:	32 feet/metres Curb to Curb: feet/metres Curb to Median: feet/metres
Road Conditions:	AM: <input checked="" type="checkbox"/> Dry <input type="checkbox"/> Wet <input type="checkbox"/> Snow Covered <input type="checkbox"/> Ice
	PM: <input checked="" type="checkbox"/> Dry <input type="checkbox"/> Wet <input type="checkbox"/> Snow Covered <input type="checkbox"/> Ice
Sidewalks:	<input type="checkbox"/> Not Present <input checked="" type="checkbox"/> North <input checked="" type="checkbox"/> South <input type="checkbox"/> East <input type="checkbox"/> West
Proximity to School:	<input checked="" type="checkbox"/> In Front of <input type="checkbox"/> Within feet/metres
Route Survey:	<input type="checkbox"/> Shopping Area <input type="checkbox"/> Construction <input type="checkbox"/> Driveway <input type="checkbox"/> Parked Vehicle(s)
	<input type="checkbox"/> Transit Bus Stop <input type="checkbox"/> Underpass Within feet/metres Other (specify):
Comments / Conflicts:	No vehicles stopped in the No Stopping zone opposite the school AM or PM to let students cross the road Some vehicles made U turns AM and PM. Vehicles passing the queue for the Kiss & Ride in the opposite driving lane in the AM.

29

**Crossing Guard Warrant Survey**

Location: In front of 1342 Edenrose St. @ Edenrose Public School

☒ Safe Gap TimeSafe Gap Time Calculation (if applicable):  $\left( \frac{W}{3.5} + 4 \right)$  13 = sec.☐ Signalized Intersection turning traffic count**Morning Intervals**

Time (AM)	# of Peds	# of Conflicts	Gaps	# of Gaps
7:45 - 7:50				
7:50 - 7:55				
7:55 - 8:00				
8:00 - 8:05				
8:05 - 8:10				
8:10 - 8:15				
8:15 - 8:20				
8:20 - 8:25				
8:25 - 8:30			//////, 14, ////, 22, /, 18	3
8:30 - 8:35			14, //, 13, ////, 13, //, 14, ////, 13, ////, 14, //	6
8:35 - 8:40			19, ////, 14, //, 20, ////, 35, //, 16, //, 14, /	7
8:40 - 8:45			/, 13, ////, 17, ////, 25, //, 30, ////	5
8:45 - 8:50			15, ////, (gridlock)////	1
8:50 - 8:55			////, (gridlock)////, 20, /	1
8:55 - 9:00			8:54 gridlock at Kiss & Ride	

**Afternoon Intervals**

Time (PM)	# of Peds	# of Conflicts	Gaps	# of Gaps
2:45 - 2:50				
2:50 - 2:55				
2:55 - 3:00				
3:00 - 3:05				
3:05 - 3:10				
3:10 - 3:15				
3:15 - 3:20				
3:20 - 3:25				
3:25 - 3:30	///		///, 16, //, 67, //, 13, //, 57, ////	11
3:30 - 3:35	//, ///		19, 20, ////, 18, //, 20, /, 27, //, 20, ////	7
3:35 - 3:40	////		/, 48, //, 15, //, 38, /, 22, /, 13, //, 18, ////, 25, //, 14	11
3:40 - 3:45			////, 34, ////, 40, ////, 21, 49, /	9
3:45 - 3:50			13, 15, 29, ////, 45, //, 65, 13, 14, //, 22, /, 13, /	16
3:50 - 3:55			///, 21, /// INCOMPLETE	
3:55 - 4:00				

**Recommendations**

SEE BELOW

**Observations**

Volume of Traffic (see Intersection Plan):

AM: ☐ Heavy ☐ Light ☒ IntermittantPM: ☐ Heavy ☒ Light ☐ Intermittant

Number of Crossing Pedestrians:

AM: North ☐ East ☐ South ☐ West ☐ 0PM: North ☐ East ☐ South ☐ West ☐ 14

Turning Traffic:

AM: ☐ Heavy ☐ Light ☐ IntermittantPM: ☐ Heavy ☐ Light ☐ Intermittant

**Additional Comments/Conflicts**

Some speeding PM

**Additional Recommendations**

- 1) THAT THE WARRANTS FOR A SCHOOL CROSSING GUARD AT THE SCHOOL DRIVEWAY HAVE NOT BEEN MET.
- 2) THAT TRANSPORTATION & WORKS BE REQUESTED TO REVIEW SIGNAGE AND PARKING ENFORCEMENT BE REQUESTED ONCE SIGNAGE IS IN PLACE. AM 8:40 - 9:00 AND PM 2:50 - 3:15
- 3) THAT PEEL REGIONAL POLICE BE REQUESTED TO ENFORCE SPEEDING AND IMPROPER U TURNS AND PASSING VIOLATIONS. AM 8:40 - 9:00 AND PM 3:10 - 3:30
- 4) THAT TRANSPORTATION & WORKS BE REQUESTED TO INSTALL SPEED BOARDS AT EDENROSE PUBLIC SCHOOL IN THE SPRING 2016
- 5) THAT THE PEEL DISTRICT SCHOOL BOARD BE REQUESTED TO REVIEW THE OPERATION OF THE KISS AND RIDE AND TO CONSIDER EXTENDING THE KISS AND RIDE TO ENCOMPASS THE STAFF PARKING LOT ON THE WEST SIDE OF THE SCHOOL.

2c

## Angie Melo

---

**From:** Sheelagh Duffin  
**Sent:** 2016/02/02 1:07 PM  
**To:** Grayson, Stephanie  
**Cc:** Laurie Letourneau; Heather McGuire; Peter Westbrook ( ; Angie Melo  
**Subject:** RE: Edenrose PS - Traffic Concerns

Hi Stephanie,

We can schedule a site inspection for in front of the school in order to determine if the warrants are met for the implementation of a crossing guard. However, crossing guards are warranted for walking students. It is expected that parents that are dropping off students will drop them off where it is safe to do so, the Kiss and ride or a few blocks from the school where the students can use the sidewalk and also the existing crossing guard at White Clover Way and Edenrose Street to cross the road, or the all way stop just west of the school..

By copy of this email to Heather McGuire I am requesting that she schedule a Traffic Safety Council Site Inspection and Safety Review in front of the school for the students of Edenrose Public School. The times of the inspection would be 8:25 – 8:55 am and 3:25 – 3:55 pm.

You will be notified of the date and time of the inspection once scheduled as will the school should you wish to join us.

Thank you.

Sheelagh



Sheelagh Duffin  
Supervisor, Crossing Guards  
T 905-896-5167 | F 905-896-5166  
[sheelagh.duffin@mississauga.ca](mailto:sheelagh.duffin@mississauga.ca)

City of Mississauga | Transportation and Works Department,  
Works Operations and Maintenance Division  
3185 Mavis Road  
Mississauga ON L5C 1T7

Please consider the environment before printing.

---

**From:** Grayson, Stephanie [<mailto:Stephanie.Grayson@peelregion.ca>]  
**Sent:** 2016/01/25 12:49 PM  
**To:** Sheelagh Duffin  
**Cc:** Laurie Letourneau ([laurie.letourneau@peelsb.com](mailto:laurie.letourneau@peelsb.com))  
**Subject:** Edenrose PS - Traffic Concerns

Hi Sheelagh,

I am following up regarding the traffic and safety concerns at Edenrose PS that we briefly discussed on January 13. I have attached an e-copy of the concerns that I shared with you. Are we able to arrange a crossing guard assessment in front of the school or would you like to arrange a meeting with the administration first? Laurie Letourneau is the Vice-Principal overseeing the AT portfolio this year. Please advise on how to proceed.

# Site Inspection Report



Corporate Services  
Office of the City Clerk

<b>Site</b>	
School: Plum Tree Park Public School	Address: 6855 Tenth Line W Mississauga ON L5N 5R2
School Times: 9:10 AM 3:40 PM	Student Population: 756
No. of School Buses: 308	BUSED
School:	Address:
School Times:	Student Population:
No. of School Buses:	

Location: (Please identify the location with reference to nearest intersection. Indicate nearest school and address)			
Derry Rd & Tenth Line - East Leg			
Date of Inspection: 2016 03 09	Inspection Time: 8:40 AM 3:40 PM	Requested By: a resident	
Prepared By: D. Yaunan/ H. Relf	Request For: a crossing guard		

<b>Observers</b>	
File Number: RT.10	File Number: RT.10
Ward: Ward 9	
Observed By: S. Duffin	<input type="checkbox"/> AM <input type="checkbox"/> PM <input checked="" type="checkbox"/> AM & PM
Observed By: H. Relf	<input type="checkbox"/> AM <input type="checkbox"/> PM <input checked="" type="checkbox"/> AM & PM
Observed By: D. Gordon - Mohamud	<input checked="" type="checkbox"/> AM <input type="checkbox"/> PM <input type="checkbox"/> AM & PM
Observed By: D. Yaunan	<input type="checkbox"/> AM <input type="checkbox"/> PM <input checked="" type="checkbox"/> AM & PM
Observed By:	<input type="checkbox"/> AM <input type="checkbox"/> PM <input type="checkbox"/> AM & PM
Observed By:	<input type="checkbox"/> AM <input type="checkbox"/> PM <input type="checkbox"/> AM & PM

<b>Details</b>	
Weather Conditions:	AM: <input checked="" type="checkbox"/> Dry <input checked="" type="checkbox"/> Sunny <input type="checkbox"/> Rain <input type="checkbox"/> Snow <input type="checkbox"/> Other: 10C
	PM: <input checked="" type="checkbox"/> Dry <input checked="" type="checkbox"/> Sunny <input type="checkbox"/> Rain <input type="checkbox"/> Snow <input type="checkbox"/> Other: 18C
Type of Crossing:	<input checked="" type="checkbox"/> 4 Way Intersection <input type="checkbox"/> 3 Way Intersection <input type="checkbox"/> Midblock (i.e., not an intersection)
Type of Control:	<input checked="" type="checkbox"/> Traffic Lights <input type="checkbox"/> Yield Signs <input type="checkbox"/> No Control
	<input type="checkbox"/> Stop Signs (Traffic is stopped on one street only) <input type="checkbox"/> All Way Stop (Traffic is stopped in all directions)

<b>Site Conditions</b>	
School Signs:	<input type="checkbox"/> School Area Signs <input type="checkbox"/> School Crossing Signs <input type="checkbox"/> Parking/Stopping Prohibition
Posted Speed Limit:	<input type="checkbox"/> 40 km/hr <input type="checkbox"/> 50 km/h <input type="checkbox"/> 60 km/hr <input type="checkbox"/> Other:
Visibility of Crossing Pedestrians:	<input type="checkbox"/> Poor <input type="checkbox"/> Fair <input type="checkbox"/> Good <input type="checkbox"/> Comments:
Sight Obstructions:	<input type="checkbox"/> Hedges <input type="checkbox"/> Trees <input type="checkbox"/> Fences <input type="checkbox"/> Bus Shelter
	<input type="checkbox"/> Newspaper Boxes <input type="checkbox"/> Other (Specify):
Road Grade:	<input type="checkbox"/> Flat <input type="checkbox"/> Incline <input type="checkbox"/> Decline
Road Geometrics:	<input type="checkbox"/> Straight <input type="checkbox"/> Curved <input type="checkbox"/> Comments:
Road Width:	NA feet/metres Curb to Curb: feet/metres Curb to Median: feet/metres
Road Conditions:	AM: <input type="checkbox"/> Dry <input type="checkbox"/> Wet <input type="checkbox"/> Snow Covered <input type="checkbox"/> Ice
	PM: <input type="checkbox"/> Dry <input type="checkbox"/> Wet <input type="checkbox"/> Snow Covered <input type="checkbox"/> Ice
Sidewalks:	<input type="checkbox"/> Not Present <input checked="" type="checkbox"/> North <input checked="" type="checkbox"/> South <input checked="" type="checkbox"/> East <input checked="" type="checkbox"/> West
Proximity to School:	<input type="checkbox"/> In Front of <input checked="" type="checkbox"/> Within 300 feet/metres
Route Survey:	<input type="checkbox"/> Shopping Area <input type="checkbox"/> Construction <input type="checkbox"/> Driveway <input type="checkbox"/> Parked Vehicle(s)
	<input checked="" type="checkbox"/> Transit Bus Stop <input type="checkbox"/> Underpass Within feet/metres Other (specify):
Comments / Conflicts:	

39

**Crossing Guard Warrant Survey**

Location: Derry Rd &amp; Tenth Line - East Leg

☐ Safe Gap Time

Safe Gap Time Calculation (if applicable):

$$\left( \frac{W}{3.5} + 4 \right)$$

= sec.

☒ Signalized Intersection turning traffic count**Morning Intervals**

Time (AM)	# of Peds	# of Conflicts	Gaps	# of Gaps
7:45 - 7:50				
7:50 - 7:55				
7:55 - 8:00				
8:00 - 8:05				
8:05 - 8:10				
8:10 - 8:15				
8:15 - 8:20				
8:20 - 8:25				
8:25 - 8:30				
8:30 - 8:35				
8:35 - 8:40				
8:40 - 8:45				
8:45 - 8:50				
8:50 - 8:55				
8:55 - 9:00				

**Afternoon Intervals**

Time (PM)	# of Peds	# of Conflicts	Gaps	# of Gaps
2:45 - 2:50				
2:50 - 2:55				
2:55 - 3:00				
3:00 - 3:05				
3:05 - 3:10				
3:10 - 3:15				
3:15 - 3:20				
3:20 - 3:25				
3:25 - 3:30				
3:30 - 3:35				
3:35 - 3:40				
3:40 - 3:45				
3:45 - 3:50				
3:50 - 3:55				
3:55 - 4:00				

**Recommendations**

1) THAT THE WARRANTS FOR A CROSSING GUARD HAVE NOT BEEN MET.

**Observations**

Volume of Traffic (see Intersection Plan):

AM: ☐ Heavy ☐ Light ☐ IntermittantPM: ☐ Heavy ☐ Light ☐ Intermittant

Number of Crossing Pedestrians:

AM: North ☐ East ☐ South ☐ West ☐PM: North ☐ East ☐ South ☐ West ☐

Turning Traffic:

AM: ☐ Heavy ☐ Light ☒ IntermittantPM: ☐ Heavy ☐ Light ☒ Intermittant

**Angie Melo**

---

**From:** Sheelagh Duffin  
**Sent:** 2016/02/12 4:47 PM  
**To:** Heather McGuire  
**Cc:** Angie Melo  
**Subject:** Request for a site inspection - Tenth Line West & Derry Road

Hi Heather,

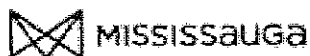
Would you kindly schedule a site inspection and gap study at the intersection of Derry Road and Tenth Line West for the students of Plum Tree Park to determine if the warrants are met for a school crossing guard. The parent that called with the request, Ms. Wallace, indicated that the students that should be crossing here are taking a longer route to and from school so that they can cross Derry Road with the crossing guard at Derry Road and Danton Promenade. Her niece is in grade 2 and, especially in bad weather, she feels that this is onerous.

The times of the inspection would be 8:40 – 9:10 am and 3:40 – 4:10 pm on the east leg of the intersection.

Would you kindly notify Ms. Wallace of the date and time of the inspection at.

Thank you.

Sheelagh  
5167



Sheelagh Duffin  
Supervisor, Crossing Guards  
T 905-896-5167 | F 905-896-5166  
[sheelagh.duffin@mississauga.ca](mailto:sheelagh.duffin@mississauga.ca)

City of Mississauga | Transportation and Works Department,  
Works Operations and Maintenance Division  
3185 Mavis Road  
Mississauga ON L5C 1T7

Please consider the environment before printing.



# Site Inspection Report



Corporate Services  
Office of the City Clerk

4

<b>Site</b>					
School:	St. Veronica Catholic School	Address:	680 Novo Star Dr Mississauga ON L5W1C7	School Times:	8:30 AM 3:00 PM
				Student Population:	463
				No. of School Buses:	326 <b>BUSED</b>
School:	David Leeder Middle School	Address:	6900 Gooderham Estate B. Mississauga ON L5W1B4	School Times:	8:10 AM 2:10 PM
				Student Population:	844
				No. of School Buses:	615 <b>BUSED</b>
Location: (Please identify the location with reference of nearest intersection. Indicate nearest school and address)					
McLaughlin Rd & Novo Star/Arrowsmith - N, S, & E Legs					
Date of Inspection:	2016	03	04	Inspection Time:	8:00 AM 2:10 PM
Prepared By:	A. Liya			Requested By:	STOPR
Request For:	safety review prior to bus removal				

<b>Observers</b>					
File Number:	RT.10	File Number:	RT.10	Ward:	Ward 11
Observed By:				<input type="checkbox"/> AM	<input type="checkbox"/> PM <input type="checkbox"/> AM & PM
Observed By:	A. Syed			<input checked="" type="checkbox"/> AM	<input type="checkbox"/> PM <input type="checkbox"/> AM & PM
Observed By:	A. Liya			<input type="checkbox"/> AM	<input type="checkbox"/> PM <input checked="" type="checkbox"/> AM & PM
Observed By:	H. Relf			<input type="checkbox"/> AM	<input checked="" type="checkbox"/> PM <input type="checkbox"/> AM & PM
Observed By:				<input type="checkbox"/> AM	<input type="checkbox"/> PM <input type="checkbox"/> AM & PM
Observed By:				<input type="checkbox"/> AM	<input type="checkbox"/> PM <input type="checkbox"/> AM & PM

<b>Details</b>					
Weather Conditions:	AM:	<input checked="" type="checkbox"/> Dry	<input type="checkbox"/> Sunny	<input type="checkbox"/> Rain	<input type="checkbox"/> Snow
	PM:	<input checked="" type="checkbox"/> Dry	<input type="checkbox"/> Sunny	<input type="checkbox"/> Rain	<input type="checkbox"/> Snow
				Other:	-5C
Type of Crossing:	<input checked="" type="checkbox"/> 4 Way Intersection	<input type="checkbox"/> 3 Way Intersection	<input type="checkbox"/> Midblock (i.e., not an intersection)		
Type of Control:	<input checked="" type="checkbox"/> Traffic Lights	<input type="checkbox"/> Yield Signs	<input type="checkbox"/> No Control		
	<input type="checkbox"/> Stop Signs (Traffic is stopped on one street only)	<input type="checkbox"/> All Way Stop (Traffic is stopped in all directions)			

<b>Site Conditions</b>					
School Signs:	<input checked="" type="checkbox"/> School Area Signs	<input type="checkbox"/> School Crossing Signs	<input type="checkbox"/> Parking/Stopping Prohibition		
Posted Speed Limit:	<input checked="" type="checkbox"/> 40 km/hr	<input type="checkbox"/> 50 km/h	<input type="checkbox"/> 60 km/hr	<input type="checkbox"/> Other:	
Visibility of Crossing Pedestrians:	<input type="checkbox"/> Poor	<input type="checkbox"/> Fair	<input checked="" type="checkbox"/> Good	Comments:	
Sight Obstructions:	<input type="checkbox"/> Hedges	<input type="checkbox"/> Trees	<input type="checkbox"/> Fences	<input type="checkbox"/> Bus Shelter	
	<input type="checkbox"/> Newspaper Boxes	<input type="checkbox"/> Other (Specify):			
Road Grade:	<input type="checkbox"/> Flat	<input checked="" type="checkbox"/> Incline	<input type="checkbox"/> Decline		
Road Geometrics:	<input type="checkbox"/> Straight	<input checked="" type="checkbox"/> Curved	Comments:		
Road Width:	feet/metres	Curb to Curb:	feet/metres	Curb to Median:	feet/metres
Road Conditions:	AM:	<input type="checkbox"/> Dry	<input type="checkbox"/> Wet	<input checked="" type="checkbox"/> Snow Covered	<input type="checkbox"/> Ice
	PM:	<input checked="" type="checkbox"/> Dry	<input type="checkbox"/> Wet	<input type="checkbox"/> Snow Covered	<input type="checkbox"/> Ice
Sidewalks:	<input type="checkbox"/> Not Present	<input checked="" type="checkbox"/> North	<input checked="" type="checkbox"/> South	<input checked="" type="checkbox"/> East	<input checked="" type="checkbox"/> West
Proximity to School:	<input type="checkbox"/> In Front of	<input type="checkbox"/> Within	feet/metres		
Route Survey:	<input type="checkbox"/> Shopping Area	<input type="checkbox"/> Construction	<input type="checkbox"/> Driveway	<input type="checkbox"/> Parked Vehicle(s)	
	<input checked="" type="checkbox"/> Transit Bus Stop	<input type="checkbox"/> Underpass	Within	feet/metres	
Comments / Conflicts:	The intersection functions well. No conflicts observed.				

49

**Crossing Guard Warrant Survey**

Location: McLaughlin Rd &amp; Novo Star/Arrowsmith - N, S, &amp; E Legs

☐ Safe Gap TimeSafe Gap Time Calculation (if applicable):  $\left( \frac{W}{3.5} + 4 \right)$  = sec☒ Signalized Intersection turning traffic count**Morning Intervals**

Time (AM)	# of Peds	# of Conflicts	Gaps			# of Gaps
			North Leg	South Leg	East Leg	
7:45 - 7:50						
7:50 - 7:55						
7:55 - 8:00						
8:00 - 8:05			///	//////	///	
8:05 - 8:10			///	//////	0,0	
8:10 - 8:15			///	//////	///,0	
8:15 - 8:20			0,///	//////	///	
8:20 - 8:25			///,///	//////	///	
8:25 - 8:30			///,///	//////	///,///	
8:30 - 8:35			///,///	//////	///	
8:35 - 8:40			0,///	///	///,///	
8:40 - 8:45						
8:45 - 8:50						
8:50 - 8:55						
8:55 - 9:00						

**Afternoon Intervals**

Time (PM)	# of Peds	# of Conflicts	Gaps			# of Gaps
			North Leg	South Leg	East Leg	
2:45 - 2:50						
2:50 - 2:55						
2:55 - 3:00						
3:00 - 3:05						
3:05 - 3:10						
3:10 - 3:15			0,///	0,///	///,///	
3:15 - 3:20			0,///,0	0,0,///	0,0	
3:20 - 3:25			///,0,0	///,0,0	0,///,0	
3:25 - 3:30			0,0,///	///,0,0	///,///,///	
3:30 - 3:35			///,0,0	0,0,0	///,///,///	
3:35 - 3:40			///,0,0	///,///	0,0,0	
3:40 - 3:45			///,///,///	0,0,///	///,0,///	
3:45 - 3:50			///,0,///,0	///,///,0	///,0,0,///	
3:50 - 3:55			0,///,0	0,///,///	///,0,0,///	
3:55 - 4:00			0,///,///	0,///,///	0,///,///	

**Recommendations**

SEE SITE INSPECTION REPORT FOR MAVIS RD AND NOVO STAR/ CRAWFORD MILL DATED MARCH 4 2016

**Observations**

Volume of Traffic (see Intersection Plan):

AM: ☐ Heavy ☐ Light ☐ Intermittant PM: ☐ Heavy ☐ Light ☐ Intermittant

Number of Crossing Pedestrians:

AM: North ☐ East ☐ South ☐ West ☐ PM: North ☐ East ☐ South ☐ West ☐

Turning Traffic:

AM: ☐ Heavy ☐ Light ☒ Intermittant PM: ☐ Heavy ☒ Light To ☒ Intermittant

46

# Crossing Guard Warrant Survey

Location: McLaughlin Rd & Novo Star/Arrowsmith - N, S, & E Legs

☐ Safe Gap Time      Safe Gap Time Calculation (if applicable):  $\left( \frac{W}{3.5} + 4 \right)$        = sec.  
☒ Signalized Intersection turning traffic count

## Morning Intervals

Time (AM)	# of Peds	# of Conflicts	Gaps			# of Gaps
			North Leg	South Leg	East Leg	
7:45 - 7:50						
7:50 - 7:55						
7:55 - 8:00						
8:00 - 8:05						
8:05 - 8:10					0,0	
8:10 - 8:15					,0	
8:15 - 8:20			0,			
8:20 - 8:25						
8:25 - 8:30						
8:30 - 8:35						
8:35 - 8:40			0,			
8:40 - 8:45						
8:45 - 8:50						
8:50 - 8:55						
8:55 - 9:00						

## Afternoon Intervals

Time (PM)	# of Peds	# of Conflicts	Gaps			# of Gaps
			North Leg	South Leg	East Leg	
2:45 - 2:50						
2:50 - 2:55						
2:55 - 3:00						
3:00 - 3:05				,0,		
3:05 - 3:10						
3:10 - 3:15				,0,		
3:15 - 3:20			0,	0,		
3:20 - 3:25					0,	
3:25 - 3:30			,0	,0		
3:30 - 3:35						
3:35 - 3:40						
3:40 - 3:45						
3:45 - 3:50						
3:50 - 3:55						
3:55 - 4:00						

## Recommendations

## Observations

Volume of Traffic (see Intersection Plan):  
 AM: ☐ Heavy ☐ Light ☐ Intermittant      PM: ☐ Heavy ☐ Light ☐ Intermittant

Number of Crossing Pedestrians:  
 AM: North  East  South  West       PM: North  East  South  West

Turning Traffic:  
 AM: ☐ Heavy ☐ Light ☐ Intermittant      PM: ☐ Heavy ☐ Light ☐ Intermittant

4c

# Site Inspection Report



Corporate Services  
Office of the City Clerk

<b>Site</b>	
School: St. Veronica Catholic School	Address: 680 Novo Star Dr Mississauga ON L5W1C7
School: David Leeder Middle School	Address: 6900 Gooderham Estate B. Mississauga ON L5W1B4
School Times: 8:30 AM   3:00 PM	Student Population: 463
No. of School Buses: 326	BUSED
School Times: 8:10 AM   2:10 PM	Student Population: 844
No. of School Buses: 615	BUSED

Location: (Please identify the location with reference to nearest intersection. Indicate nearest school and address)

Mavis Rd & Crawford Mill-Novo Star -N, S & E Legs

Date of Inspection: 2016 03 04	Inspection Time: 8:00 AM   2:10 PM	Requested By: STOPR
Prepared By: V. Mansour	Request For: safety review prior to bus removal	

## Observers

File Number: RT.10	File Number: RT.10	Ward: Ward 11
Observed By: P. Westbrook	<input type="checkbox"/> AM <input checked="" type="checkbox"/> PM <input type="checkbox"/> AM & PM	
Observed By: V. Mansour	<input type="checkbox"/> AM <input type="checkbox"/> PM <input checked="" type="checkbox"/> AM & PM	
Observed By: D. Suess	<input checked="" type="checkbox"/> AM <input type="checkbox"/> PM <input type="checkbox"/> AM & PM	
Observed By: S. Duffin	<input type="checkbox"/> AM <input type="checkbox"/> PM <input checked="" type="checkbox"/> AM & PM	
Observed By: A. Gentile	<input type="checkbox"/> AM <input type="checkbox"/> PM <input checked="" type="checkbox"/> AM & PM	
Observed By:	<input type="checkbox"/> AM <input type="checkbox"/> PM <input type="checkbox"/> AM & PM	

## Details

Weather Conditions:	AM: <input checked="" type="checkbox"/> Dry <input type="checkbox"/> Sunny <input type="checkbox"/> Rain <input type="checkbox"/> Snow <input type="checkbox"/> Other: -5C
	PM: <input checked="" type="checkbox"/> Dry <input type="checkbox"/> Sunny <input type="checkbox"/> Rain <input type="checkbox"/> Snow <input type="checkbox"/> Other: 0C
Type of Crossing:	<input checked="" type="checkbox"/> 4 Way Intersection <input type="checkbox"/> 3 Way Intersection <input type="checkbox"/> Midblock (i.e., not an intersection)
Type of Control:	<input checked="" type="checkbox"/> Traffic Lights <input type="checkbox"/> Yield Signs <input type="checkbox"/> No Control
	<input type="checkbox"/> Stop Signs (Traffic is stopped on one street only) <input type="checkbox"/> All Way Stop (Traffic is stopped in all directions)

## Site Conditions

School Signs:	<input type="checkbox"/> School Area Signs <input type="checkbox"/> School Crossing Signs <input type="checkbox"/> Parking/Stopping Prohibition
Posted Speed Limit:	<input type="checkbox"/> 40 km/hr <input type="checkbox"/> 50 km/h <input checked="" type="checkbox"/> 60 km/hr <input type="checkbox"/> Other:
Visibility of Crossing Pedestrians:	<input type="checkbox"/> Poor <input type="checkbox"/> Fair <input type="checkbox"/> Good Comments:
Sight Obstructions:	<input type="checkbox"/> Hedges <input type="checkbox"/> Trees <input type="checkbox"/> Fences <input type="checkbox"/> Bus Shelter
	<input type="checkbox"/> Newspaper Boxes <input type="checkbox"/> Other (Specify):
Road Grade:	<input checked="" type="checkbox"/> Flat <input type="checkbox"/> Incline <input type="checkbox"/> Decline
Road Geometrics:	<input checked="" type="checkbox"/> Straight <input type="checkbox"/> Curved Comments:
Road Width:	NA feet/metres Curb to Curb: feet/metres Curb to Median: feet/metres
Road Conditions:	AM: <input checked="" type="checkbox"/> Dry <input type="checkbox"/> Wet <input type="checkbox"/> Snow Covered <input type="checkbox"/> Ice
	PM: <input checked="" type="checkbox"/> Dry <input type="checkbox"/> Wet <input type="checkbox"/> Snow Covered <input type="checkbox"/> Ice
Sidewalks:	<input type="checkbox"/> Not Present <input checked="" type="checkbox"/> North <input checked="" type="checkbox"/> South <input checked="" type="checkbox"/> East <input checked="" type="checkbox"/> West
Proximity to School:	<input type="checkbox"/> In Front of <input checked="" type="checkbox"/> Within 300 feet/metres
Route Survey:	<input type="checkbox"/> Shopping Area <input type="checkbox"/> Construction <input type="checkbox"/> Driveway <input type="checkbox"/> Parked Vehicle(s)
	<input checked="" type="checkbox"/> Transit Bus Stop <input type="checkbox"/> Underpass Within feet/metres Other (specify):
Comments / Conflicts:	intersection is well marked with zebra stripes and countdown timers. Vehicles are courteous to crossing pedestrians. No conflicts observed. Pedestrians crossed confidently. Intersection functions well.

4d

# Crossing Guard Warrant Survey

Location: Mavis Rd & Crawford Mill-Novato Star - N,S & E Legs

☐ Safe Gap Time

Safe Gap Time Calculation (if applicable):  $\left( \frac{W}{3.5} + 4 \right)$  = sec.

☒ Signalized Intersection turning traffic count

## Morning Intervals

Time (AM)	# of Peds	# of Conflicts	Gaps			# of Gaps
			North Leg	East Leg	South Leg	
7:45 - 7:50						
7:50 - 7:55						
7:55 - 8:00						
8:00 - 8:05						
8:05 - 8:10						
8:10 - 8:15						
8:15 - 8:20						
8:20 - 8:25						
8:25 - 8:30						
8:30 - 8:35						
8:35 - 8:40						
8:40 - 8:45						
8:45 - 8:50						
8:50 - 8:55						
8:55 - 9:00						

## Afternoon Intervals

Time (PM)	# of Peds	# of Conflicts	Gaps			# of Gaps
			North Leg	East Leg	South	
2:45 - 2:50						
2:50 - 2:55						
2:55 - 3:00						
3:00 - 3:05						
3:05 - 3:10						
3:10 - 3:15	/				0,0	
3:15 - 3:20			,0	0,	0,	
3:20 - 3:25						
3:25 - 3:30	,			0,	,	
3:30 - 3:35	,		,	0,0,		
3:35 - 3:40			,	,	,	
3:40 - 3:45						
3:45 - 3:50						
3:50 - 3:55						
3:55 - 4:00						

CONTINUED NEXT PAGE 3:00 - 3:30

## Recommendations

SEE BELOW

## Observations

Volume of Traffic (see Intersection Plan):

AM: ☐ Heavy ☐ Light ☐ Intermittant PM: ☐ Heavy ☐ Light ☐ Intermittant

Number of Crossing Pedestrians:

AM: North ☐ East ☐ South ☐ West ☐ PM: North 21 East ☐ South ☐ West ☐

Turning Traffic:

AM: ☐ Heavy ☐ Light ☒ Intermittant PM: ☐ Heavy ☒ Light ☒ Intermittant

4e

**Crossing Guard Warrant Survey**

Location: Mavis Rd &amp; Crawford Mill-Novato Star - N, S &amp; E Legs

☐ Safe Gap TimeSafe Gap Time Calculation (if applicable):  $\left( \frac{W}{3.5} + 4 \right)$  = sec.☒ Signalized Intersection turning traffic count**Morning Intervals**

Time (AM)	# of Peds	# of Conflicts	Gaps			# of Gaps
			North Leg	East Leg	South Leg	
7:45 - 7:50						
7:50 - 7:55						
7:55 - 8:00						
8:00 - 8:05						
8:05 - 8:10						
8:10 - 8:15						
8:15 - 8:20						
8:20 - 8:25						
8:25 - 8:30						
8:30 - 8:35						
8:35 - 8:40						
8:40 - 8:45						
8:45 - 8:50						
8:50 - 8:55						
8:55 - 9:00						

**Afternoon Intervals**

Time (PM)	# of Peds	# of Conflicts	Gaps			# of Gaps
			North Leg	East Leg	South	
2:45 - 2:50						
2:50 - 2:55						
2:55 - 3:00						
3:00 - 3:05					0	
3:05 - 3:10						
3:10 - 3:15						
3:15 - 3:20			,0			
3:20 - 3:25				0,	0,	
3:25 - 3:30						
3:30 - 3:35						
3:35 - 3:40						
3:40 - 3:45						
3:45 - 3:50						
3:50 - 3:55						
3:55 - 4:00						

**Recommendations****Observations**

Volume of Traffic (see Intersection Plan):

AM: ☐ Heavy ☐ Light ☐ Intermittant PM: ☐ Heavy ☐ Light ☐ Intermittant

Number of Crossing Pedestrians:

AM: North ☐ East ☐ South ☐ West ☐ PM: North ☐ East ☐ South ☐ West ☐

Turning Traffic:

AM: ☐ Heavy ☐ Light ☐ Intermittant PM: ☐ Heavy ☐ Light ☐ Intermittant

**Additional Comments/Conflicts**McLaughlin  
7 Rd**Additional Recommendations**

- 1) That Transportation & Works be requested to ensure that the traffic signals across Mavis <sup>and</sup> are at slow walking speed for September 2016 when the David Leeder Middle School students and the St. Veronica Middle School students will no longer be bused by Student Transportation of Peel Region.
- 2) That the Principals of David Leeder Middle School and St. Veronica Middle School be requested to remind their students to always activate the ped button before crossing Mavis Rd.

49

W11

## Heather McGuire

---

**From:** Sheelagh Duffin  
**Sent:** 2016/01/08 4:22 PM  
**To:** Anna.Gentile@dpcdsb.org  
**Cc:** Heather McGuire; Angie Melo  
**Subject:** RE: Transportation Reassessment - Middle School Students grades 6-8

Hi Anna,

By copy of this email to Heather McGuire I am requesting that she schedule safety reviews for the students of St. Veronica Catholic School and David Leeder Middle School in advance of bussing being removed at 1) Mavis Road and Crawford Mill Avenue/Novo Star Drive and 2) McLaughlin Road and Novo Star Drive/Arrowsmith Drive. The times of the inspections would be 8:00 – 8:40 am and 2:10 – 3:30 pm.

Thank you.

Sheelagh



Sheelagh Duffin  
Supervisor, Crossing Guards  
T 905-896-5167 | F 905-896-5166  
[sheelagh.duffin@mississauga.ca](mailto:sheelagh.duffin@mississauga.ca)

City of Mississauga | Transportation and Works Department,  
Works Operations and Maintenance Division  
3185 Mavis Road  
Mississauga ON L5C 1T7

Please consider the environment before printing.

**From:** Anna.Gentile@dpcdsb.org [<mailto:Anna.Gentile@dpcdsb.org>]  
**Sent:** 2016/01/07 4:14 PM  
**To:** Sheelagh Duffin  
**Subject:** Transportation Reassessment - Middle School Students grades 6-8

Hello Sheelagh! Happy New Year to you!

STOPR is considering a couple of transportation reassessments for the upcoming school year.

Could Traffic Safety Council perform preliminary site inspections at the following intersections:

Mavis & Crawford Mill Ave/Novo Star Drive  
And  
McLaughlin Road & Novo Star/Arrowsmith Drive

Kindly review intersections and provide comments/recommendations. Affected Schools will be David Leeder Middle School and St. Veronica Elementary School. Students crossing will be in grades 6, 7 & 8.



# Site Inspection Report



Corporate Services  
Office of the City Clerk

<b>Site</b>	
School: Sheridan Park Public School	Address: 2280 Perran Dr Mississauga ON L5K 1M1
School Times: 9:00 AM 3:30 PM	Student Population: 509
No. of School Buses: 338	Based
School:	Address:
School Times:	Student Population:
No. of School Buses:	

Location: (Please identify the location with reference of nearest intersection. Indicate nearest school and address)			
vicinity of Thorn Lodge Dr & Perran Dr.			
Date of Inspection: 2016 03 10	Inspection Time: 8:30 AM 3:30 PM	Requested By: Councillor Ras	
Prepared By: V. Mansour/ S. Beniuk		Request For: guard relocation feasibility	

<b>Observers</b>	
File Number: RT.10	File Number: RT.10
Ward: Ward 2	
Observed By: S. Duffin	<input type="checkbox"/> AM <input type="checkbox"/> PM <input checked="" type="checkbox"/> AM & PM
Observed By: V. Mansour	<input type="checkbox"/> AM <input type="checkbox"/> PM <input checked="" type="checkbox"/> AM & PM
Observed By: D. Suess	<input type="checkbox"/> AM <input type="checkbox"/> PM <input checked="" type="checkbox"/> AM & PM
Observed By: S. Beniuk	<input type="checkbox"/> AM <input type="checkbox"/> PM <input checked="" type="checkbox"/> AM & PM
Observed By:	<input type="checkbox"/> AM <input type="checkbox"/> PM <input type="checkbox"/> AM & PM
Observed By:	<input type="checkbox"/> AM <input type="checkbox"/> PM <input type="checkbox"/> AM & PM

<b>Details</b>	
Weather Conditions:	AM: <input type="checkbox"/> Dry <input type="checkbox"/> Sunny <input checked="" type="checkbox"/> Rain <input type="checkbox"/> Snow <input type="checkbox"/> Other:
	PM: <input type="checkbox"/> Dry <input type="checkbox"/> Sunny <input checked="" type="checkbox"/> Rain <input type="checkbox"/> Snow <input type="checkbox"/> Other:
Type of Crossing:	<input type="checkbox"/> 4 Way Intersection <input type="checkbox"/> 3 Way Intersection <input type="checkbox"/> Midblock (i.e., not an intersection)
Type of Control:	<input type="checkbox"/> Traffic Lights <input type="checkbox"/> Yield Signs <input type="checkbox"/> No Control
	<input type="checkbox"/> Stop Signs (Traffic is stopped on one street only) <input type="checkbox"/> All Way Stop (Traffic is stopped in all directions)

<b>Site Conditions</b>	
School Signs:	<input checked="" type="checkbox"/> School Area Signs <input checked="" type="checkbox"/> School Crossing Signs <input checked="" type="checkbox"/> Parking/Stopping Prohibition
Posted Speed Limit:	<input checked="" type="checkbox"/> 40 km/hr <input type="checkbox"/> 50 km/h <input type="checkbox"/> 60 km/hr <input type="checkbox"/> Other:
Visibility of Crossing Pedestrians:	<input type="checkbox"/> Poor <input type="checkbox"/> Fair <input type="checkbox"/> Good Comments:
Sight Obstructions:	<input type="checkbox"/> Hedges <input type="checkbox"/> Trees <input type="checkbox"/> Fences <input type="checkbox"/> Bus Shelter
	<input type="checkbox"/> Newspaper Boxes <input type="checkbox"/> Other (Specify):
Road Grade:	<input checked="" type="checkbox"/> Flat <input type="checkbox"/> Incline <input type="checkbox"/> Decline
Road Geometrics:	<input checked="" type="checkbox"/> Straight <input type="checkbox"/> Curved north and south Comments: of crosswalk
Road Width:	31 feet/metres Curb to Curb: feet/metres Curb to Median: feet/metres
Road Conditions:	AM: <input type="checkbox"/> Dry <input checked="" type="checkbox"/> Wet <input type="checkbox"/> Snow Covered <input type="checkbox"/> Ice
	PM: <input type="checkbox"/> Dry <input checked="" type="checkbox"/> Wet <input type="checkbox"/> Snow Covered <input type="checkbox"/> Ice
Sidewalks:	<input type="checkbox"/> Not Present <input type="checkbox"/> North <input type="checkbox"/> South <input checked="" type="checkbox"/> East <input checked="" type="checkbox"/> West
Proximity to School:	<input checked="" type="checkbox"/> In Front of <input type="checkbox"/> Within feet/metres
Route Survey:	<input type="checkbox"/> Shopping Area <input type="checkbox"/> Construction <input type="checkbox"/> Driveway <input type="checkbox"/> Parked Vehicle(s)
	<input type="checkbox"/> Transit Bus Stop <input type="checkbox"/> Underpass Within feet/metres Other (specify):
Comments / Conflicts:	

**Crossing Guard Warrant Survey**

Location: vicinity of Thorn Lodge Dr &amp; Perran Dr.

☒ Safe Gap TimeSafe Gap Time Calculation (if applicable):  $\left( \frac{W}{3.5} + 4 \right)$  13 = sec.☐ Signalized Intersection turning traffic count**Morning Intervals**

Time (AM)	# of Peds	# of Conflicts	Gaps	# of Gaps
7:45 - 7:50				
7:50 - 7:55				
7:55 - 8:00				
8:00 - 8:05				
8:05 - 8:10				
8:10 - 8:15				
8:15 - 8:20				
8:20 - 8:25				
8:25 - 8:30				
8:30 - 8:35	//		/// 18, /// 13, /// 14, /// 41, /// 14, /	7
8:35 - 8:40	/		17, /// 23, / 15, / 13, 70, 15, /// 28, ///	12
8:40 - 8:45	//		60, 25, 30, /// 35, 41, 20, 18, 45	14
8:45 - 8:50	////		23, 58, 18, / 15, / 22, /// 40, 18, / 27, /	14
8:50 - 8:55	////		37, 25, / 39, 19, /// 20, /// 30, 15, / 20, / 15, /	13
8:55 - 9:00	////		31, /// 20, /// 17, /// 14, 17, 20, 25, / 19, /// 17, /	11

**Afternoon Intervals**

Time (PM)	# of Peds	# of Conflicts	Gaps	# of Gaps
2:45 - 2:50				
2:50 - 2:55				
2:55 - 3:00				
3:00 - 3:05				
3:05 - 3:10				
3:10 - 3:15				
3:15 - 3:20				
3:20 - 3:25				
3:25 - 3:30				
3:30 - 3:35	////////	////	62, /// 27, /// 23, / 40, /// 16, /// 23, /	12
3:35 - 3:40	////		23, /// 20, /// 30, /// 13, 38, /// 46	10
3:40 - 3:45			/ 17, / 40, 14, 22, / 23, / 19, 29, / 24, /	11
3:45 - 3:50			74, / 19, / 16, / 26, 92, / 18, /	15
3:50 - 3:55			75, /// 24, / 24, 19, 15, / 20	9
3:55 - 4:00			104, 23, / 18, 23, 22, /// 38, / 17, / 40, /	18

**Recommendations**

- 1) That no change be made in location of crossing guard - Appears to work well, guard strategically placed.
- 2) That parking enforcement be requested in PM, 3:20 - 3:40.
- 3) That Transportation & Works review signage.

**Observations**

Volume of Traffic (see Intersection Plan):

AM: ☐ Heavy ☒ Light ☐ Intermittant PM: ☐ Heavy ☒ Light ☐ Intermittant

Number of Crossing Pedestrians:

AM: North ☐ East ☐ South ☐ West 18 PM: North ☐ East ☐ South ☐ West 23

Turning Traffic:

AM: ☐ Heavy ☐ Light ☐ Intermittant PM: ☐ Heavy ☐ Light ☐ Intermittant

**Additional Comments/Conflicts**

SCHOOL CROSSWALK FUNCTIONS WELL, ACCOMODATING STUDENTS THAT LIVE BOTH NORTH AND SOUTH OF THE CROSSWALK. CROSSING LOCATION STRATEGICALLY PLACED. DOES NOT IMPACT TRAFFIC TURNING INTO THE KISS AND RIDE FROM NORTH OF THE SCHOOL INSTEAD PROVIDING ADDITIONAL OPPORTUNITIES FOR VEHICLES TO TURN WHILE THE CROSSING GUARD IS CROSSING STUDENTS. MORE VEHICLES APPROACH THE KISS & RIDE FROM NORTH OF THE SCHOOL.

CURVES ON THORN LODGE DRIVE BOTH NORTH AND SOUTH OF THE EXISTING CROSSWALK WOULD IMPEDE THE VIEW OF THE CROSSING GUARD AND OF TRAFFIC IF THE CROSSWALK WERE TO BE RE-LOCATED EITHER DIRECTION FROM THE EXISTING LOCATION.

GAPS IN TRAFFIC AM & PM ARTIFICIALLY CREATED BY TRAFFIC WAITING TO TURN INTO THE KISS AND RIDE AND BY THE CROSSING GUARD CROSSING STUDENTS

**Additional Recommendations**

5c

W2

**Heather McGuire**

---

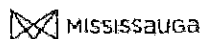
**From:** Sheelagh Duffin  
**Sent:** 2016/02/10 4:38 PM  
**To:** Heather McGuire  
**Cc:** Jennifer Wayne; Angie Melo; Helena Francisco; Andy Bate  
**Subject:** RE: Thornlodge Drive and Perran Drive Traffic concerns

Hi Heather,

Would you kindly schedule a site inspection in the vicinity of Thorn Lodge Drive and Perran Drive for the students of Sheridan Park PS to determine the feasibility of re-locating the crossing guard that crosses students at the Sheridan Park PS driveway to an alternate location that is further from the potential all way stop at the intersection of Thorn Lodge Drive and Perran Drive. The times of the inspection would be 8:30 – 9:00 am and 3:30 – 4:00 pm.

Thank you.

Sheelagh  
5167



Sheelagh Duffin  
Supervisor, Crossing Guards  
T 905-896-5167 | F 905-896-5166  
[sheelagh.duffin@mississauga.ca](mailto:sheelagh.duffin@mississauga.ca)

City of Mississauga | Transportation and Works Department,  
Works Operations and Maintenance Division  
3185 Mavis Road  
Mississauga ON L5C 1T7

Please consider the environment before printing.

**From:** Angie Melo  
**Sent:** 2016/02/10 12:39 PM  
**To:** Helena Francisco  
**Cc:** Jennifer Wayne; Sheelagh Duffin  
**Subject:** RE: Thornlodge Drive and Perran Drive Traffic concerns

Hi Helena

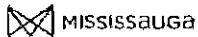
I understand that at a meeting with Andy Bate and Al Sousa, Councillor Ras requested a review of the current location of the crossing guard near Thornlodge and Perran with a view to moving the crossing guard further from the all way stop that is being recommended for Thornlodge and Perran.

Andy Bate will be sending Sheelagh Duffin an email request for a site inspection at this location. Sheelagh Duffin will contact your office directly to advise of the site inspection date/time.

Please keep in mind that once the site inspection is conducted, any recommendations will still need to go through Traffic Safety Council and then to General Committee/Council for final approval. I will keep your office apprised of any details resulting from the site inspection as soon as I receive the Site Inspection Report.

Thank you

5d  
Angie



**Angie Melo**  
Legislative Coordinator  
T 905-615-3200 ext.5423  
[angie.melo@mississauga.ca](mailto:angie.melo@mississauga.ca)

City of Mississauga | Corporate Services Department,  
Legislative Services Division

Please consider the environment before printing.

---

**From:** Helena Francisco  
**Sent:** 2016/02/10 11:48 AM  
**To:** Angie Melo  
**Cc:** Jennifer Waye  
**Subject:** Thornlodge Drive and Perran Drive Traffic concerns

Hi Angie,

Can you please advise when and if TSC is scheduled to visit the above mentioned location?

We are having a community meeting at the end of March and would like to receive the results to be shared with the area Residents.

Cheers,

*Respectfully,*

*Helena Francisco  
Executive Assistant to  
Councillor Karen Ras, Ward 2  
905-896-5201*

*"This e-mail may not be forwarded to anyone for any reason without express written permission of the author."*

# Site Inspection Report



6  
Corporate Services  
Office of the City Clerk

<b>Site</b>	
School: Silverthorn Public School	Address: 3535 Cedar Creek Dr. Mississauga ON L4Y2Y4
School Times: 8:00 AM 3:30 PM	Student Population: 299
No. of School Buses: 154	BUSED
School:	Address:
School Times:	Student Population:
No. of School Buses:	

Location: (Please identify the location with reference to nearest intersection. Indicate nearest school and address)			
Breckenridge Dr & Cedar Creek Dr			
Date of Inspection: 2016 03 02	Inspection Time: 8:30 AM 3:30 PM	Requested By: parent	
Prepared By: D. Yaunan	Request For: crossing guard & safety review		

<b>Observers</b>	
File Number: RT.10	File Number: RT.10
Observed By: S. Duffin	Ward: Ward 3
Observed By: A. Syed	<input type="checkbox"/> AM <input type="checkbox"/> PM <input checked="" type="checkbox"/> AM & PM
Observed By: S. Kumra	<input checked="" type="checkbox"/> AM <input type="checkbox"/> PM <input type="checkbox"/> AM & PM
Observed By: D. Yaunan	<input type="checkbox"/> AM <input checked="" type="checkbox"/> PM <input type="checkbox"/> AM & PM
Observed By: S. Beniuk	<input type="checkbox"/> AM <input checked="" type="checkbox"/> PM <input type="checkbox"/> AM & PM
Observed By:	<input type="checkbox"/> AM <input type="checkbox"/> PM <input type="checkbox"/> AM & PM

<b>Details</b>	
Weather Conditions:	AM: <input checked="" type="checkbox"/> Dry <input type="checkbox"/> Sunny <input type="checkbox"/> Rain <input type="checkbox"/> Snow <input type="checkbox"/> Other: +5C
	PM: <input checked="" type="checkbox"/> Dry <input type="checkbox"/> Sunny <input type="checkbox"/> Rain <input type="checkbox"/> Snow <input type="checkbox"/> Other: +12C
Type of Crossing:	<input type="checkbox"/> 4 Way Intersection <input checked="" type="checkbox"/> 3 Way Intersection <input type="checkbox"/> Midblock (i.e., not an intersection)
Type of Control:	<input type="checkbox"/> Traffic Lights <input type="checkbox"/> Yield Signs <input type="checkbox"/> No Control
	<input checked="" type="checkbox"/> Stop Signs (Traffic is stopped on one street only) <input type="checkbox"/> All Way Stop (Traffic is stopped in all directions)

<b>Site Conditions</b>	
School Signs:	<input type="checkbox"/> School Area Signs <input type="checkbox"/> School Crossing Signs <input type="checkbox"/> Parking/Stopping Prohibition
Posted Speed Limit:	<input type="checkbox"/> 40 km/hr <input checked="" type="checkbox"/> 50 km/h <input type="checkbox"/> 60 km/hr <input type="checkbox"/> Other:
Visibility of Crossing Pedestrians:	<input type="checkbox"/> Poor <input type="checkbox"/> Fair <input checked="" type="checkbox"/> Good Comments:
Sight Obstructions:	<input type="checkbox"/> Hedges <input type="checkbox"/> Trees <input type="checkbox"/> Fences <input type="checkbox"/> Bus Shelter
	<input type="checkbox"/> Newspaper Boxes <input type="checkbox"/> Other (Specify):
Road Grade:	<input checked="" type="checkbox"/> Flat <input type="checkbox"/> Incline <input type="checkbox"/> Decline
Road Geometrics:	<input checked="" type="checkbox"/> Straight <input type="checkbox"/> Curved Comments:
Road Width:	29 feet/metres Curb to Curb: 8.5 feet/metres Curb to Median: feet/metres
Road Conditions:	AM: <input checked="" type="checkbox"/> Dry <input type="checkbox"/> Wet <input type="checkbox"/> Snow Covered <input type="checkbox"/> Ice
	PM: <input checked="" type="checkbox"/> Dry <input type="checkbox"/> Wet <input type="checkbox"/> Snow Covered <input type="checkbox"/> Ice
Sidewalks:	<input type="checkbox"/> Not Present <input checked="" type="checkbox"/> North <input checked="" type="checkbox"/> South <input checked="" type="checkbox"/> East <input checked="" type="checkbox"/> West
Proximity to School:	<input type="checkbox"/> In Front of <input checked="" type="checkbox"/> Within 100 feet/metres
Route Survey:	<input type="checkbox"/> Shopping Area <input type="checkbox"/> Construction <input type="checkbox"/> Driveway <input type="checkbox"/> Parked Vehicle(s)
	<input type="checkbox"/> Transit Bus Stop <input type="checkbox"/> Underpass Within feet/metres Other (specify):
Comments / Conflicts:	No conflicts observed

69

**Crossing Guard Warrant Survey**

Location: Breckenridge Dr &amp; Cedar Creek Dr

☒ Safe Gap TimeSafe Gap Time Calculation (if applicable):  $\left( \frac{W}{3.5} + 4 \right)$  12 = sec.☐ Signalized Intersection turning traffic count**Morning Intervals**

Time (AM)	# of Peds	# of Conflicts	Gaps	# of Gaps
7:45 - 7:50				
7:50 - 7:55				
7:55 - 8:00				
8:00 - 8:05				
8:05 - 8:10				
8:10 - 8:15				
8:15 - 8:20				
8:20 - 8:25				
8:25 - 8:30				
8:30 - 8:35			18,22,39,56,32,74	17
8:35 - 8:40			63,122,22	16
8:40 - 8:45			122,133,28,24,11,59,11	29
8:45 - 8:50			40,56,15,40,16,32,13,32	17
8:50 - 8:55			1,21,48,111,50,111,17,13,111	11
8:55 - 9:00			26,17,13,23,11,20,33,19,111,111	9

**Afternoon Intervals**

Time (PM)	# of Peds	# of Conflicts	Gaps	# of Gaps
2:45 - 2:50				
2:50 - 2:55				
2:55 - 3:00				
3:00 - 3:05				
3:05 - 3:10				
3:10 - 3:15				
3:15 - 3:20				
3:20 - 3:25				
3:25 - 3:30				
3:30 - 3:35	1		1,16,101,20,11,15,111,50,11	15
3:35 - 3:40			24,41,11,36,11,35,11,22,93	18
3:40 - 3:45			56,53,46,78,1	17
3:45 - 3:50			66,111,26,71,29,17	15
3:50 - 3:55			104,104,52,114,1	28
3:55 - 4:00				

**Recommendations**

1) THAT THE WARRANTS FOR A CROSSING GUARD HAVE NOT BEEN MET

**Observations**

Volume of Traffic (see Intersection Plan):

AM: ☐ Heavy ☒ Light ☐ IntermittantPM: ☐ Heavy ☐ Light ☐ Intermittant

Number of Crossing Pedestrians:

AM: North ☐ East ☐ South ☐ West ☐PM: North ☐ East ☐ South ☐ West ☐

Turning Traffic:

AM: ☐ Heavy ☒ Light ☐ IntermittantPM: ☐ Heavy ☒ Light ☐ Intermittant

# Site Inspection Report



66b  
Corporate Services  
Office of the City Clerk

<b>Site</b>	
School: Silverthorn Public School	Address: 3535 Cedar Creek Dr. Mississauga ON L4Y2Y4
School Times: 8:00 AM 3:30 PM	Student Population: 299
No. of School Buses: 154	Bused
School:	Address:
School Times: AM PM	Student Population:
No. of School Buses:	

Location: (Please identify the location with reference of nearest intersection. Indicate nearest school and address)			
in front of Silverthorn Public School @ 3535 Cedar Creek Dr.			
Date of Inspection: 2016 03 02	Inspection Time: 8:30 AM 3:30 PM	Requested By: parent	
Prepared By: P. Westbrook/ A. Liya	Request For: crossing guard & safety review		

<b>Observers</b>			
File Number: RT.10	File Number: RT.10	Ward: Ward 3	
Observed By: S. Duffin	<input type="checkbox"/> AM <input type="checkbox"/> PM <input checked="" type="checkbox"/> AM & PM		
Observed By: M. Sherwani	<input checked="" type="checkbox"/> AM <input type="checkbox"/> PM <input type="checkbox"/> AM & PM		
Observed By: P. Westbrook	<input type="checkbox"/> AM <input type="checkbox"/> PM <input checked="" type="checkbox"/> AM & PM		
Observed By: A. Liya	<input type="checkbox"/> AM <input type="checkbox"/> PM <input checked="" type="checkbox"/> AM & PM		
Observed By:	<input type="checkbox"/> AM <input type="checkbox"/> PM <input type="checkbox"/> AM & PM		
Observed By:	<input type="checkbox"/> AM <input type="checkbox"/> PM <input type="checkbox"/> AM & PM		

<b>Details</b>			
Weather Conditions:	AM: <input checked="" type="checkbox"/> Dry <input type="checkbox"/> Sunny <input type="checkbox"/> Rain <input type="checkbox"/> Snow <input type="checkbox"/> Other: +5C		
	PM: <input checked="" type="checkbox"/> Dry <input type="checkbox"/> Sunny <input type="checkbox"/> Rain <input type="checkbox"/> Snow <input type="checkbox"/> Other: +12C		
Type of Crossing:	<input type="checkbox"/> 4 Way Intersection <input type="checkbox"/> 3 Way Intersection <input checked="" type="checkbox"/> Midblock (i.e., not an intersection)		
Type of Control:	<input type="checkbox"/> Traffic Lights <input type="checkbox"/> Yield Signs <input checked="" type="checkbox"/> No Control		
	<input type="checkbox"/> Stop Signs (Traffic is stopped on one street only) <input type="checkbox"/> All Way Stop (Traffic is stopped in all directions)		

<b>Site Conditions</b>			
School Signs:	<input checked="" type="checkbox"/> School Area Signs <input type="checkbox"/> School Crossing Signs <input type="checkbox"/> Parking/Stopping Prohibition		
Posted Speed Limit:	<input checked="" type="checkbox"/> 40 km/hr <input type="checkbox"/> 50 km/h <input type="checkbox"/> 60 km/hr <input type="checkbox"/> Other:		
Visibility of Crossing Pedestrians:	<input type="checkbox"/> Poor <input type="checkbox"/> Fair <input checked="" type="checkbox"/> Good	Comments:	
Sight Obstructions:	<input type="checkbox"/> Hedges <input type="checkbox"/> Trees <input type="checkbox"/> Fences <input type="checkbox"/> Bus Shelter		
	<input type="checkbox"/> Newspaper Boxes <input type="checkbox"/> Other (Specify):		
Road Grade:	<input checked="" type="checkbox"/> Flat <input type="checkbox"/> Incline <input type="checkbox"/> Decline		
Road Geometrics:	<input type="checkbox"/> Straight <input checked="" type="checkbox"/> Curved	Comments:	
Road Width:	feet/metres Curb to Curb: 8.5 feet/metres Curb to Median: feet/metres		
Road Conditions:	AM: <input checked="" type="checkbox"/> Dry <input type="checkbox"/> Wet <input type="checkbox"/> Snow Covered <input type="checkbox"/> Ice		
	PM: <input checked="" type="checkbox"/> Dry <input type="checkbox"/> Wet <input type="checkbox"/> Snow Covered <input type="checkbox"/> Ice		
Sidewalks:	<input type="checkbox"/> Not Present <input type="checkbox"/> North <input type="checkbox"/> South <input checked="" type="checkbox"/> East <input checked="" type="checkbox"/> West		
Proximity to School:	<input checked="" type="checkbox"/> In Front of <input type="checkbox"/> Within feet/metres		
Route Survey:	<input type="checkbox"/> Shopping Area <input type="checkbox"/> Construction <input type="checkbox"/> Driveway <input type="checkbox"/> Parked Vehicle(s)		
	<input type="checkbox"/> Transit Bus Stop <input type="checkbox"/> Underpass Within feet/metres Other (specify):		

Comments / Conflicts:	No conflicts observed. Drivers were courteous to all walkers.
-----------------------	---------------------------------------------------------------



# Crossing Guard Warrant Survey

Location: in front of Silverthorn Public School @ 3535 Cedar Creek Dr.

☒ Safe Gap Time

Safe Gap Time Calculation (if applicable):  $\left( \frac{W}{3.5} + 4 \right)$  12 = sec.

☐ Signalized Intersection turning traffic count

## Morning Intervals

Time (AM)	# of Peds	# of Conflicts	Gaps	# of Gaps
7:45 - 7:50				
7:50 - 7:55				
7:55 - 8:00				
8:00 - 8:05				
8:05 - 8:10				
8:10 - 8:15				
8:15 - 8:20				
8:20 - 8:25				
8:25 - 8:30				
8:30 - 8:35			16,51,81,/	10
8:35 - 8:40			160,54,/,26,65,23,/	24
8:40 - 8:45			120,/,60,13,16,30,/,111,52,15,/,	24
8:45 - 8:50			24,/,13,20,55,16,/,19,33,/,	15
8:50 - 8:55			19,/,27,/,14,21,/,111,44,36,/,18,/,17,/,	13
8:55 - 9:00			111,14,/,24,17,16,20,13,111,51,111,15	12

## Afternoon Intervals

Time (PM)	# of Peds	# of Conflicts	Gaps	# of Gaps
2:45 - 2:50				
2:50 - 2:55				
2:55 - 3:00				
3:00 - 3:05				
3:05 - 3:10				
3:10 - 3:15				
3:15 - 3:20				
3:20 - 3:25				
3:25 - 3:30			76,27,/	8
3:30 - 3:35	/		14,18,36,/,29,111,13,/,16,/	8
3:35 - 3:40			15,111,14,/,13,24,31,/,15,/,21,26,/,	11
3:40 - 3:45			77,51,/,43,77,27,44,/,14,/,	25
3:45 - 3:50			1,26,59,37,31,13	12
3:50 - 3:55			55,167,41	12
3:55 - 4:00				

## Recommendations

- 1) THAT THE WARRANTS FOR A CROSSING GUARD HAVE NOT BEEN MET.
- 2) THAT TRAFFIC SAFETY COUNCIL REQUEST THAT THE PRINCIPAL ENSURES ALL SCHOOL STAFF ARE EARLY WHEN LOADING SCHOOL BUSES AND MANNING KISS AND RIDE

## Observations

Volume of Traffic (see Intersection Plan):

AM: ☐ Heavy ☒ Light ☐ Intermittant PM: ☐ Heavy ☒ Light ☐ Intermittant

Number of Crossing Pedestrians:

AM: North ☐ East ☐ South ☐ West ☐ PM: North ☐ East ☐ South ☐ West ☐

Turning Traffic:

AM: ☐ Heavy ☐ Light ☐ Intermittant PM: ☐ Heavy ☐ Light ☐ Intermittant

62

## Angie Melo

---

**From:** Heather McGuire  
**Sent:** 2016/02/22 1:47 PM  
**To:** Laura Conquergood  
**Cc:** Angie Melo; Chris Fonseca; Sheelagh Duffin  
**Subject:** RE: ACTION - Laura Conquergood -

Thank you Laura. I will include this correspondence with the original site inspection request that was sent to Traffic Safety Council members. So you are aware, the site inspection has been scheduled for Wednesday, March 2 2016 from 8:30 – 9:00 and 3:30 – 4:00. I will advise you if that changes.

Regards,

Heather

---

**From:** Laura Conquergood  
**Sent:** 2016/02/21 4:06 PM  
**To:** Sheelagh Duffin  
**Cc:** Angie Melo; Chris Fonseca; Heather McGuire  
**Subject:** Re: ACTION - Laura Conquergood

Hi Sheelagh,

Just wanted to drive you an update. On Friday when I was walking my kids to school a child cross cedar creek from broke ridge was almost hit by a car. It missed by about 1 m and stopped in time. The child was crossing the street and didn't look properly.

Thanks

Laura

On Feb 8, 2016, at 12:17 PM, Sheelagh Duffin <[Sheelagh.Duffin@mississauga.ca](mailto:Sheelagh.Duffin@mississauga.ca)> wrote:

Dear Ms. Conquergood,

Thank you for your enquiry concerning a crossing guard and/or a stop sign for the students of Silverthorn PS.

In Mississauga, Traffic Safety Council is the subcommittee of Council that considers matters related to the safety of students and their movement throughout the City of Mississauga. TSC conducts site inspections and safety reviews at locations where there are concerns with student safety. By copy of this email to Heather McGuire, I am requesting that she schedule a site inspection and safety review in front of Silverthorn PS and at the intersection of Breckenridge Road and Cedar Creek Drive to determine if the warrants are met for the implementation of a school crossing guard and/or if there are other safety measures that might be implemented. The times of the inspection would be 8:30 – 9:00 am and 3:30 – 4:00 pm.

You will be notified of the date of the inspection should you wish to attend and of the recommendations going forward to Council once the inspection is completed.

Kindly confirm that Cedar Creek Drive and Breckenridge Road is the intersection that you are requesting consideration be given for the installation of a stop sign.

be

Thank you.

Sheelagh

5167

<image001.png>

Sheelagh Duffin

Supervisor, Crossing Guards

T 905-896-5167 | F 905-896-5166

[sheelagh.duffin@mississauga.ca](mailto:sheelagh.duffin@mississauga.ca)

City of Mississauga | Transportation and Works Department,  
Works Operations and Maintenance Division  
3185 Mavis Road  
Mississauga ON L5C 1T7

Please consider the environment before printing.

---

**From:** Chris Fonseca

**Sent:** 2016/01/27 8:51 AM

**To:** Angie Melo

**Subject:** ACTION - Laura Conquergood -

e

Good Morning Angie,

Please see Mrs. Conquergood's e-mail below. Councillor Fonseca would like Silverthorn PS added to the next TSC Agenda.

Thanks,

Linda

*Linda Downie*

Executive Assistant

Councillor Chris Fonseca, Ward 3

300 City Centre Drive

Mississauga, Ontario L5B 3C1

Telephone: 905-896-5300

Fax: 905-896-5463

<image004.jpg><image005.jpg>

[www.chrisfonseca.ca](http://www.chrisfonseca.ca)

Sign up to receive the City of Mississauga and Region of Peel Alerts at

<http://feeds.feedburner.com/CityOfMississaugaNewsReleases> and

<http://www.peelregion.ca/connecttopeel/>

This e-mail may not be forwarded to anyone for any reason without express written permission of the author.

---

**From:** {

**Sent:** 2016/01/26 3:24 PM

**To:** Chris Fonseca

**Subject:** Inquiry about School crossing

Hi Chris,

b f  
I wanted to find out how I can speak to someone about the crossing outside of my son's school (Silverthorn P.S.). We have to cross from the west side of the road to the east side and some mornings this is a crazy feat with the crazy parents getting into the school.

I don't expect there to be a crossing guard but I wanted to find a safe way for my kids to cross the street. For the next couple years I will be walking with them but when they have to walk on their own I am concern. I would like to discuss with someone how a proposal can be made for a stop sign at Breckenridge and Silvercreek for safe crossing.

If you can help me or point me in the direction of who I could speak with it would be greatly appreciated.

Laura Conqueroood

7.1

**Angie Melo**

---

**From:** Chris Fonseca  
**Sent:** 2016/02/24 11:16 AM  
**To:** Angie Melo  
**Cc:** Traffic Safety; 'Nancy'; Chris Fonseca  
**Subject:** Crossing guard request

Hi Angie,

Can you please set up a Traffic Safety inspection for Blessed Teresa of Calcutta School located at 1120 Runningbrook Drive and the intersections of Tomken and Runningbrook as well as Riverspray and Runningbrook as per Mrs. Nancy Dettore's e-mail below. Please note she has given verbal permission for me to include her e-mail to you and request that she be copied on responses.

Respectfully,

Deanna  
Ward 3

**From:** Nancy  
**Date:** February 23, 2016 at 6:07:52 PM EST  
**To:** Chris Fonseca <[Chris.Fonseca@mississauga.ca](mailto:Chris.Fonseca@mississauga.ca)>  
**Subject:** Crossing guards at Tomken & Runningbrook

Hi Chris,

I am very concerned about the safety of my children and all the other children in this neighborhood. My son attends blessed Teresa of Calcutta school and He is not eligible for bussing. Therefore, I am very concerned that there are no crossing guards at Tomken and Runningbrook which is a major intersection for the children to be crossing the streets all by themselves.

As well as Riverspray and Runningbrook. Cars are parked on Runningbrook and when trying to cross the street to Riverspray, you could not see anything and children can be hurt if a car does not see them.

I am very concerned and worried about the safety of my children as well as all the other children going and coming to and from school.

I would like this matter to be looked at immediately and I would like crossing guards to be placed at both intersections as soon as possible. Safety comes first!!

Looking forward to hearing back from you as soon as possible.

Thanking you in advance.

Regards,  
Nancy

Angie Melo

7.2

**From:** Lucas, Dale <Dale.Lucas@dpcdsb.org>  
**Sent:** 2016/03/03 3:02 PM  
**To:** Sheelagh Duffin; Heather McGuire; Carey, K.J.  
**Cc:** Angie Melo; Peter Westbrook ( ); Chris Fonseca  
**Subject:** RE: Traffic around Sts. Martha & Mary School 1760 Bough Beeches Blvd.

Good Afternoon K.J.

Please find attached email from a Grandmother of 2 students at your school to a City Councilor. I am sure you are aware of traffic issues at the front of the school, Can you make yourself available when I meet with City of Mississauga Traffic Safety?

Thank you

*Dale*

DALE LUCAS  
PROJECTS CO-ORDINATOR  
PLANT DEPARTMENT DPCDSB  
(905)-890-0708 EXT 23265

---

**From:** Sheelagh Duffin [<mailto:Sheelagh.Duffin@mississauga.ca>]  
**Sent:** Thursday, March 03, 2016 10:42 AM  
**To:** Heather McGuire  
**Cc:** Angie Melo; Lucas, Dale; Peter Westbrook ( ); Chris Fonseca  
**Subject:** FW: Traffic around Sts. Martha & Mary School 1760 Bough Beeches Blvd.

Hi Heather,

Would you kindly schedule a safety review in front of Sts. Martha and Mary Catholic School. The times of the site inspection would be 8:30 – 9:00 am and 3:30 – 4:00 pm.

Dale - It would be helpful if you were available to attend to monitor the Kiss and Ride to determine if there are improvements that could be made that would reduce the congestion on the street.

Thank you.

Sheelagh  
5167



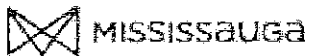
Sheelagh Duffin  
Supervisor, Crossing Guards  
T 905-896-5167 | F 905-896-5166  
[sheelagh.duffin@mississauga.ca](mailto:sheelagh.duffin@mississauga.ca)

City of Mississauga | Transportation and Works Department,  
Works Operations and Maintenance Division  
3185 Mavis Road  
Mississauga ON L5C 1T7

---

**From:** Angie Melo  
**Sent:** 2016/03/02 11:19 AM  
**To:** Sheelagh Duffin  
**Subject:** FW: Traffic around Sts. Martha & Mary School 1760 Bough Beeches Blvd.

For review and consideration for a site inspection



**Angie Melo**  
Legislative Coordinator  
T 905-615-3200 ext.5423  
[angie.melo@mississauga.ca](mailto:angie.melo@mississauga.ca)

City of Mississauga | Corporate Services Department,  
Legislative Services Division

Please consider the environment before printing.

---

**From:** Chris Fonseca  
**Sent:** 2016/03/02 11:12 AM  
**To:** Angie Melo  
**Subject:** RE: Traffic around Sts. Martha & Mary School 1760 Bough Beeches Blvd.

Hi Angie,

Our office received the following complaint (below) this morning regarding the issue of vehicles dropping and picking up children around Sts. Martha and Mary School. Councillor Fonseca has asked if a site inspection can be set up and this added to an upcoming TCS meeting.

Hello Councillor.

I always look forward to your E-Updates - always learn something. This one reminds me of two things I've been meaning to bring to your attention.

First, your article on parking reminds me of a very serious issue I have become increasingly concerned with in our neighbourhood. I pick up my granddaughters every day from school, at Sts. Martha and Mary, just east of Fieldgate, on Bough Beeches. It's a 10-minute walk for us, so I never drive. However, arriving early, I have begun to observe the drivers who come to pick up their children. The situation is appalling. Despite the **clearly posted** signs showing NO STOPPING and NO PARKING boundaries, drivers completely ignore them, to the peril of other drivers, and, most disconcertingly, students. The crossing guard is beside herself. I speak to her daily, and she simply does not know what to do with these people. She confronts them, telling them, nicely, that they cannot park here, as it endangers students by limiting visibility, constricting turning areas for school buses, etc etc. All falls on deaf ears ... "What are you - a cop?"

This past Wednesday, I witnessed a van simply crashing into another vehicle while turning the **wrong way** down a one-way exit ramp! And that was the limit for me.

I implore you to get the police out there on school days at around 3:15, and start plastering tickets EVERYWHERE! They could fund the police budget for a year if they spent a week there.

Regards,

**From:** Sheelagh Duffin  
**Sent:** 2016/03/17 3:08 PM  
**To:** Heather McGuire  
**Cc:** Angie Melo  
**Subject:** Request for a Site Inspection - Barondale Drive and Cortina Crescent (W Leg)

Hi Heather,

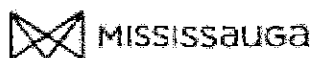
Would you kindly schedule a site inspection and gap study at the intersection of Barondale Drive and Cortina Crescent (W Leg) for the students of Barondale PS. A parent has called asking that the hours of the crossing guard currently in place at this location to cross students for San Lorenzo Ruiz CS be extended to also accommodate students from Barondale PS whose school times are one half hour later. The issue, according to the parent, is that if the parents and students cross Barondale Drive with the crossing guard in place in front of Barondale PS, they then have to cross 3 crescents on the north side of Barondale Drive where parents are parking to pick up their students from Barondale PS. The parent indicates that the drivers are intent on turning into and out of the parking on the crescents and are not paying attention to crossing students. She indicated that they feel safer remaining on the south side of Barondale Drive where there are no driveways to cross or traffic to contend with until they reach the school crossing at Barondale Drive and Cortina Crescent.

The times of the inspection would be 8:15 – 8:45 am and 3:15 – 3:40 pm just after the crossing guard on duty at this location for San Lorenzo Ruiz currently completes crossing for that school.

Would you also please notify the parent of the date and time of the inspection once it is scheduled. Her name is Nazha at

Thank you.

Sheelagh  
5167



MISSISSAUGA

Sheelagh Duffin  
Supervisor, Crossing Guards  
T 905-896-5167 | F 905-896-5166  
[sheelagh.duffin@mississauga.ca](mailto:sheelagh.duffin@mississauga.ca)

City of Mississauga | Transportation and Works Department,  
Works Operations and Maintenance Division  
3185 Mavis Road  
Mississauga ON L5C 1T7

Please consider the environment before printing.



Year  
Month

2016  
1

2016
January

School Name	Offence Code	Values	
		Issued Tickets	Total Visits
All Saints	(blank)		1
Artesian Drive	12	1	1
	(blank)		0
Barondale	3	1	1
	12	1	1
	24	1	0
	27	3	1
	43	7	1
	(blank)		1
Bishop Scalabrini	(blank)		1
Blessed John XXIII Catholic		1	2
Brandon Gate	2	1	1
	43	2	2
	(blank)		1
Brian W Fleming	27	2	1
	42	1	1
	43	1	1
	(blank)		2
Briarwood		8	6
Canadian Martyrs	17	1	1
	27	1	0
	42	1	1
	43	6	3
	(blank)		3
Cashmere Ave	3	1	1
	42	1	1
	43	4	0
	(blank)		3
Champlain Trail	27	1	0
	43	4	3
Cooksville Creek	27	11	4
Corliss	43	1	1
Corpus Christi	(blank)		1
Corsair	(blank)		1
Credit Valley	43	1	1
Darcel Ave Sr.	27	1	1
Derry West Village	43	6	2
Divine Mercy	3	1	1

8a

Year  
Month

2016  
1

2016

January

School Name	Offence Code	Values	
		Issued Tickets	Total Visits
Divine Mercy	27	4	1
Dixie	(blank)		1
Dolphin Sr.	(blank)		2
Dunrankin Drive	43	1	1
Edenrose	27	8	3
	42	2	1
	43	7	1
	(blank)		1
Ellengale	(blank)		1
Elmcrest	42	2	1
Erin Centre Middle	(blank)		2
Fairview	6	1	1
	27	2	2
	43	1	0
Fallingbrook Middle	(blank)		2
Father Daniel Zanon	27	1	1
	(blank)		2
Floradale	24	1	0
	42	4	1
	43	8	4
	(blank)		2
Forest Ave	42	1	1
Forest Glen	8	1	0
	27	1	1
	43	6	2
Glenhaven Sr	(blank)		3
Green Glade Sr.	(blank)		1
Hazel McCallion Sr.	27	1	1
	(blank)		2
Hillcrest Middle	(blank)		2
Hillside Sr.	(blank)		1
Holy Cross	27	2	1
	(blank)		1
Homelands Sr.	(blank)		1
Huntington Ridge	27	7	4
	29	1	0
	43	6	3
Kindree	3	1	1
Levi Creek	43	2	1

Year  
Month

2016  
1

2016
January

School Name	Offence Code	Values	
		Issued Tickets	Total Visits
Levi Creek	(blank)		1
Lorne Park	43	1	1
	(blank)		1
Maple Wood	43	2	1
Mary Fix Catholic	24	1	1
	43	1	0
McKinnon	(blank)		3
Meadowvale Village	(blank)		4
Mentor College	12	2	1
	42	4	1
	43	5	1
Metropolitan Andrei Catholic	27	2	1
	43	8	3
	(blank)		0
Mineola	27	1	1
	(blank)		1
Morning Star Middle	27	1	1
	(blank)		1
Munden Park	(blank)		1
Nahani Way	43	2	2
	(blank)		1
Oscar Peterson	27	1	1
	43	1	1
	(blank)		2
Osprey Woods	27	3	1
	43	1	0
	(blank)		2
Our Lady of Mercy	42	1	1
	43	1	1
Owenwood	(blank)		1
Plowman's Park	27	2	1
Plum Tree Park	27	1	1
	(blank)		1
Queen Elizabeth Sr	(blank)		1
Rick Hansen	15	1	1
	42	7	0
	43	5	1
Ruth Thompson Middle	7	1	0
	43	4	2

8c

Year  
Month

2016  
1

2016

January

School Name	Offence Code	Values	
		Issued Tickets	Total Visits
San Lorenzo Ruiz	(blank)		2
Settler's Green	43	2	1
	(blank)		1
Sheridan Park	(blank)		2
Sherwood Mills	43	1	0
	(blank)		1
Silver Creek	43	1	0
	(blank)		2
St. Albert of Jerusalem	43	3	2
St. Alfred	42	1	1
	43	1	1
	(blank)		0
St. Barbara	(blank)		2
St. Bernadette	43	1	1
	(blank)		0
St. Bernard of Clairvaux Catholic	15	1	1
	27	1	1
	(blank)		1
St. Christopher	(blank)		1
St. David of Wales	43	1	1
St. Dunstan	42	1	1
	(blank)		0
St. Francis of Assisi	15	3	1
	(blank)		1
St. Gertrude	26	1	1
	27	1	1
	43	4	2
	(blank)		0
St. Herbert	27	1	1
	(blank)		1
St. Hilary	3	1	1
	27	4	2
	29	1	0
St. Joseph (Mississauga)	(blank)		2
St. Jude	(blank)		1
St. Julia Catholic	7	1	0
	17	1	0
	42	1	1
	43	5	3

8d

Year  
Month

2016  
1

2016
January

School Name	Values		
	Offence Code	Issued Tickets	Total Visits
St. Louis	43	1	1
	(blank)		1
St. Margaret of Scotland	43	1	1
	(blank)		2
St. Martin	(blank)		1
St. Matthew	(blank)		2
St. Philip	27	1	1
St. Raphael	42	1	0
	(blank)		1
St. Raymond	(blank)		1
St. Richard	(blank)		2
St. Sebastian Catholic	(blank)		1
St. Sofia	(blank)		2
St. Teresa of Avila	43	2	1
	(blank)		1
St. Thomas More	(blank)		1
St. Veronica	43	1	1
	(blank)		2
St. Vincent de Paul	(blank)		1
Sts. Martha & Mary	42	2	1
	(blank)		2
Sts. Peter & Paul	(blank)		1
T.L. Kennedy	27	2	1
Tecumseh	(blank)		1
The Valleys Sr	(blank)		2
Thomas Street Middle	27	2	1
	(blank)		2
Thornwood	43	3	1
	(blank)		1
Trelawny	27	1	1
Vista Heights	(blank)		1
Whitehorn	5	1	1
	12	1	1
	27	1	1
	29	1	1
	43	6	2
Whiteoaks	43	2	1
	(blank)		2
Willow Glen	(blank)		1

8e

Year  
Month

2016  
1

2016
January

School Name	Offence Code	Values	
		Issued Tickets	Total Visits
Willow Way	27	1	1
Miller's Grove	(blank)		1
David Leeder Middle	(blank)		2
Olive Grove	27	5	1
	42	3	1
	43	1	0
	(blank)		2
John Cabot	(blank)		1
Garthwood Park	43	2	1
Loyola Catholic	(blank)		1
St. Marcellinus	(blank)		1
<b>Grand Total</b>		<b>280</b>	<b>254</b>

02 PARKING ON BLVD  
 05 PARKING ON SIDEWALK  
 07 3 METRES OF A FIRE HYDRANT  
 08 PARKING WITHIN 5 METERS OF AS INTER  
 12 IMMOBILE OR UNLICENSED  
 15 PROHIBITED AREA (PARKING)  
 17 PROHIBITED AREA (STOPPING)  
 24 FACING WRONG DIRECTION  
 27 PARKING IN A DESIGNATED FIRE ROUTE  
 28 STOPPING IN A DESIGNATED FIRE ROUTE  
 31 OBSTRUCTING TRAFFIC  
 42 PARKING IN SCHOOL ZONE  
 43 STOPPING IN SCHOOL ZONE

Year  
Month

2016  
2

2016

February

School Name	Offence Code	Values	
		Issued Tickets	Total Visits
Allen A Martin Sr.	(blank)		2
Artesian Drive	15	1	0
	24	1	1
Barondale	43	3	2
	(blank)		1
Bishop Scalabrini	(blank)		1
Brian W Fleming	27	4	2
	43	1	1
Briarwood		4	3
Bristol Rd. Middle	(blank)		3
Britannia	1	15	1
	2	27	0
	27	3	2
	43	4	1
Brookmede	27	1	1
	29	1	0
	(blank)		1
Burnhamthorpe	27	4	1
	42	5	2
	43	4	2
	(blank)		1
Canadian Martyrs	42	1	1
	43	2	2
	(blank)		1
Cashmere Ave	43	2	1
	(blank)		2
Castlebridge	27	4	3
	43	3	1
Champlain Trail	27	1	1
	(blank)		3
Churchill Meadows	15	1	1
	27	2	1
	(blank)		1
Clifton	27	1	1
	(blank)		1
Cooksville Creek	27	4	3
	(blank)		1
Corliss	43	1	1

89

Year  
Month

2016  
2

2016

February

School Name	Offence Code	Values	
		Issued Tickets	Total Visits
Corpus Christi	12	1	1
	27	1	1
	43	1	0
	(blank)		2
Corsair	27	1	1
	43	2	1
Credit Valley	27	8	3
	43	1	0
	(blank)		1
Derry West Village	43	7	1
	(blank)		1
Divine Mercy	27	1	1
	42	2	1
	(blank)		1
Dixie	(blank)		3
Dunrankin Drive	(blank)		2
Edenrose	27	15	5
Erin Centre Middle	(blank)		2
Erin Mills Middle	(blank)		2
Fairview	(blank)		1
Fallingbrook Middle	27	1	1
	43	8	3
Father Daniel Zanon	43	1	1
	(blank)		1
Floradale	42	2	2
	43	2	0
Forest Ave	42	1	1
	43	1	0
Glenhaven Sr	27	1	1
Hazel McCallion Sr.	27	2	0
	43	1	1
	(blank)		1
Holy Cross	(blank)		2
Homelands Sr.	(blank)		1
Huntington Ridge	27	1	1
	43	1	1
	(blank)		3
Janet I McDougald	(blank)		1
Kindree	43	1	1



86

Year  
Month

2016  
2

2016
February

School Name	Offence Code	Values	
		Issued Tickets	Total Visits
King's Masting	(blank)		2
Levi Creek	27	2	1
	43	1	1
	(blank)		1
Lisgar Middle	(blank)		1
Lorne Park	(blank)		1
Marvin Heights	(blank)		1
Mary Fix Catholic	(blank)		1
McKinnon	(blank)		2
Mentor College	42	6	2
Metropolitan Andrei Catholic	27	2	1
	(blank)		1
Middlebury	27	1	1
	(blank)		2
Morning Star Middle	15	1	1
	(blank)		1
Munden Park	(blank)		1
Nahani Way	12	1	0
	27	5	3
	43	2	1
	(blank)		1
Oscar Peterson	27	3	1
	43	5	3
	(blank)		3
Osprey Woods	27	5	1
	43	2	1
Our Lady of Good Voyage	43	1	1
	(blank)		2
Owenwood	(blank)		2
Plum Tree Park	7	1	1
	17	2	1
	27	3	0
	43	5	4
	(blank)		2
Queenston Dr	42	2	1
Rick Hansen	15	1	1
	42	2	2
	43	2	1
Ridgewood	43	5	2

81

Year  
Month

2016  
2

2016

February

School Name	Offence Code	Values	
		Issued Tickets	Total Visits
Ridgewood	(blank)		1
San Lorenzo Ruiz	43	1	1
	(blank)		1
Settler's Green	17	1	0
	27	1	1
	(blank)		1
Shelter Bay	17	1	1
	42	1	1
	43	10	2
	(blank)		1
Sheridan Park	(blank)		2
Sherwood Mills	27	1	1
	43	2	1
	(blank)		1
St. Albert of Jerusalem	24	1	0
	43	1	1
St. Alfred	3	1	0
	12	1	0
	17	1	1
	27	7	1
	43	1	1
St. Barbara	43	3	2
	(blank)		1
St. Basil	42	1	1
	43	4	1
St. Bernadette	43	1	1
St. Bernard of Clairvaux Catholic	(blank)		1
St. Christopher	27	1	1
	(blank)		2
St. Clare	(blank)		1
St. Dominic	(blank)		1
St. Dunstan	(blank)		3
St. Edith Stein	(blank)		1
St. Elizabeth Seton	27	2	1
	(blank)		0
St. Francis of Assisi	43	1	1
	(blank)		2
St. Gertrude	27	1	1
	43	3	1

8j

Year  
Month

2016  
2

2016
February

School Name	Offence Code	Values	
		Issued Tickets	Total Visits
St. Gertrude	(blank)		3
St. Gregory	(blank)		1
St. Herbert	27	1	1
	43	1	1
	(blank)		0
St. Hilary	27	3	2
St. John of the Cross	43	1	1
St. Joseph (Mississauga)	43	1	1
	(blank)		1
St. Jude	3	1	0
	27	4	3
	43	1	1
	(blank)		5
St. Margaret of Scotland	43	1	1
	(blank)		1
St. Martin	42	3	2
St. Matthew	43	1	1
	(blank)		3
St. Philip	43	1	1
	(blank)		1
St. Raphael	27	1	0
	43	1	1
St. Raymond	43	1	1
	(blank)		1
St. Teresa of Avila	43	3	1
St. Therese of the Child Jesus	(blank)		1
St. Thomas More	(blank)		1
St. Timothy	43	1	1
	(blank)		2
St. Vincent de Paul	12	1	0
	42	1	1
Sts. Martha & Mary	24	1	1
	(blank)		1
Sts. Peter & Paul	(blank)		2
The Valleys Sr	27	1	1
	(blank)		2
Thomas Street Middle	27	1	1
Thorn Lodge	43	1	1
Thornwood	27	1	1

8K

Year  
Month

2016  
2

2016

February

School Name	Offence Code	Values	
		Issued Tickets	Total Visits
Thornwood	43	2	2
	(blank)		1
Trelawny	27	2	0
	43	6	3
	(blank)		1
Vista Heights	17	1	1
Whitehorn	24	1	1
	43	2	1
Willow Way	12	1	1
	27	5	4
	43	5	1
	(blank)		1
Miller's Grove	42	1	1
Silverthorn	12	2	1
	43	2	1
Ascension Of Our Lord	(blank)		1
John Cabot	43	2	1
Loyola Catholic	(blank)		1
Mississauga Secondary	27	1	1
Chris Hadfield	12	1	0
	(blank)		2
St. Aloysius Gonzaga Secondary	27	2	1
<b>Grand Total</b>		<b>340</b>	<b>278</b>

02 PARKING ON BLVD

05 PARKING ON SIDEWALK

07 3 METRES OF A FIRE HYDRANT

08 PARKING WITHIN 5 METERS OF AS INTER

12 IMMOBILE OR UNLICENSED

15 PROHIBITED AREA (PARKING)

17 PROHIBITED AREA (STOPPING)

24 FACING WRONG DIRECTION

27 PARKING IN A DESIGNATED FIRE ROUTE

28 STOPPING IN A DESIGNATED FIRE ROUTE

31 OBSTRUCTING TRAFFIC

42 PARKING IN SCHOOL ZONE

43 STOPPING IN SCHOOL ZONE

**TRAFFIC SAFETY COUNCIL**  
**Transportation and Works - Action Items**

Jan-16			
Reference	School / Location	Item	Action
TSC-0003-2016	St. Basil Catholic School	<p>1. That Transportation and Works be requested to review the signage in the St. Basil Catholic School area as follows:</p> <p>a. Changing "No Parking" signs at the school entrance and exit driveway to "No Stopping" signs;</p> <p>b. Adding more "No U Turn" signs to create No U Turn zones;</p> <p>c. Replace "No Stopping" signs opposite the school with "No Stopping" Monday to Friday between 8:00 a.m. to 4:00 p.m. September to June; and</p> <p>d. Add more "No Stopping" signs for better visibility.</p>	<p>a. complete</p> <p>b. complete</p> <p>c. complete</p> <p>d. complete</p>
TSC-0004-2016	Brian W. Fleming Public School	<p>1. That the Transportation and Works Department be requested to review signage in the area for students attending Brian W. Fleming Public School</p>	work order required
TSC-0005-2016	St. Christopher Catholic School, Hillcrest School, Whiteoaks Public School, Lorne Park Secondary School	<p>3. That the Transportation and Works Department be requested to conduct a speed study on Clarkson Road in the area of Birchwood Drive in order to determine if traffic calming measures should be recommended, for the students attending St. Christopher Catholic School, Hillcrest School, Whiteoaks Public School, Lorne Park Secondary School</p>	speed study requested



**Ontario Traffic Council**

[www.etc.org](http://www.etc.org)

# 66th OTC Annual Conference

**MAY 15-17, 2016**

**HORSESHOE  
RESORT  
BARRIE, ON**

Event Hosted by

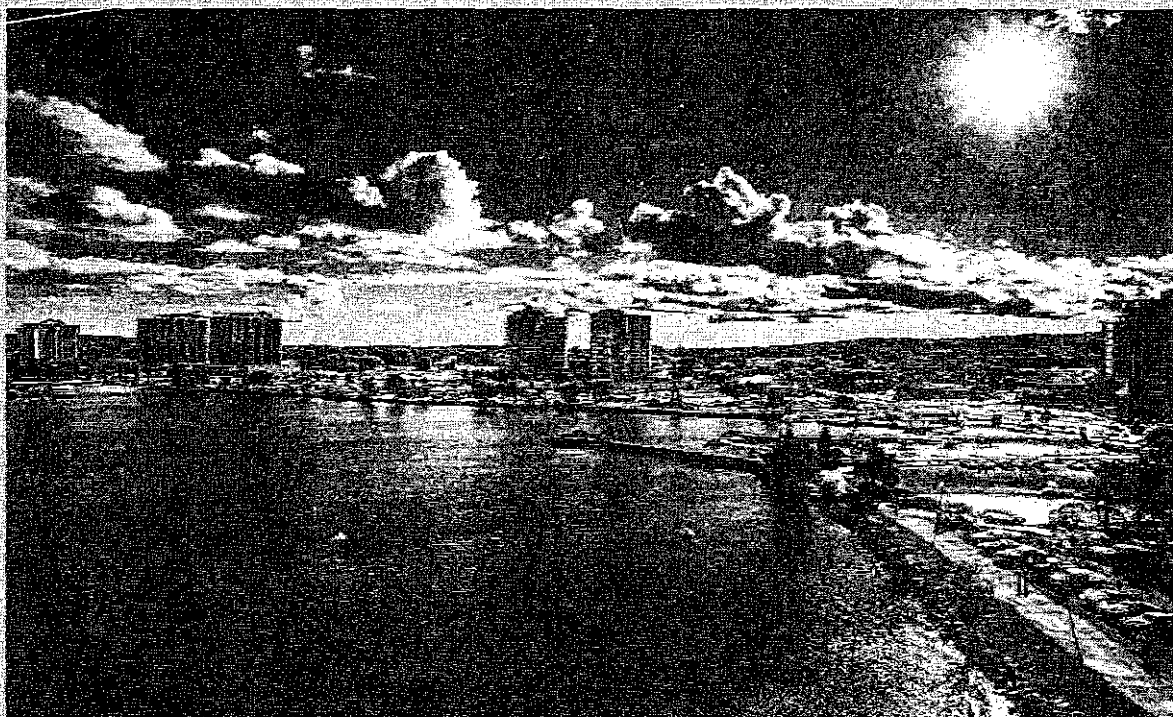
Ontario Traffic  
Council  
170 The Donway W.  
Suite 208  
Toronto, ON  
M3C 2C3

Phone: 647-346-4050

Fax: 647-346-4060

E-mail: [info@etc.org](mailto:info@etc.org)

OTC is online at:  
<http://www.etc.org/>



## Conference Agenda

### SUNDAY, MAY 15

3:00 to 6:00 p.m. **Registration**

3:00 to 6:00 p.m. **Setup for the Exhibitors**

4:00 to 6:00 p.m. **OTC Committee Meetings**

7:30 to 9:00 p.m. **President's Reception**

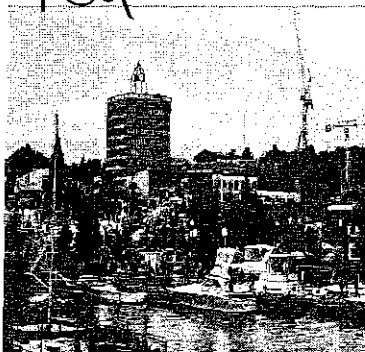
### MONDAY, MAY 16

7:00 to 8:00 a.m. **Extra setup time for the Suppliers Showcase**

8:00 to 8:45 a.m. **Registration & Breakfast**

8:50 to 9:15 a.m. **Opening Session**

The opening of the OTC Conference featuring remarks by City of Barrie Mayor, Jeff Lehman and Dino Bagnariol, Director, Highways Standards Branch, MTO



Above: Barrie's waterfront

MONDAY, MAY 16 (continued)

9:15 to 9:45 a.m. **Session 1: Update from MTO**

Presenter: Sheri Graham, Ministry of Transportation

Join us for an informative session on the activities of the provincial government this past year and to answer your questions about traffic policy from the MTO.

9:45 to 10:30 a.m. **Session 2: Innovative Approach in Planning and Analysis of Proposed HOT Lanes in the GTA**

Presenter: Goran Nikolic, Ontario Ministry of Transportation

The MTO is evaluating the potential implementation of High-Occupancy/Toll (HOT) lanes on Provincial highways in the GTA. HOT lane initiatives recently announced by the Minister of Transportation include a pilot HOT lane project to be implemented on existing High-Occupancy Vehicle (HOV) lanes on the Queen Elizabeth Way through Oakville and Burlington during 2016 and the implementation of HOT lanes on Highway 427 north of Highway 401 when this highway is extended to Major Mackenzie Drive in the next few years.

To facilitate the estimation of HOT lane utilization and revenue potential, the Ministry has developed an innovative traffic simulation framework. This framework, an extension of the AIMSUN traffic simulation software, permits detailed analysis of dynamically-priced HOT lanes where the toll-rate per kilometre for each section of the HOT lane can be changed at 5-minute intervals to ensure the performance of the lane is maintained. In applying this traffic simulation framework to the Highway 427 corridor, several lessons were learned with respect to the implementation of HOT lanes on the typically congested highways in the GTA and their performance over the longer term. Lessons learned during these evaluations are discussed in the context of the current evaluation and feasibility assessment of five additional corridors.

10:30 to 10:50 a.m. **Break and Supplier Showcase**

10:50 to 11:50 a.m. **Session 3: Visibility and Conspicuity Issues in Vehicle and Pedestrian Collisions**

Presenter: Marc Green, Visual Expert Human Factors

Some have claimed that perceptual failure is the cause of 90% of road accidents. As a result, an understanding of accident causation often hinges on the issue of seeing: Should the driver have seen the pedestrian?

Or Sign? Or approaching vehicle? Or construction barrier? In order to understand why a driver failed to see important information it is first necessary to understand how drivers normally see. This talk will explain the main factors involved seeing, visibility, the ability to detect light contrast, and conspicuity, the ability of an object to draw attention. It will cover contrast sensitivity, "inattention blindness," "look but fail to see errors," "confirmation bias," "automatic behavior" and other psychological phenomena. I will explain the scientific basis for vision and conspicuity in general and give examples of how it determines driver collision vehicle control and collision avoidance with pedestrians and other vehicles.



**Ontario Traffic Council**

[www.etc.org](http://www.etc.org)

106  
MONDAY, MAY 16 (continued)

11:50 to 1:00 p.m. **Lunch and Supplier Showcase**

1:00 to 1:40 p.m. ***Session 4: Implementing the City of Barrie's Multi-Modal Active Transportation Master Plan***

Presenter: Ralph Scheunemann, City of Barrie

The Barrie Multi-Modal Active Transportation Master Plan (MMATMP) serves as the City's roadmap to implement a well-balanced transportation network to serve its future transportation needs. The Harvie / Big Bay Point Road Crossing Over Hwy 400 was one of the recommendations in the MMATMP and the City is working closely with MTO to retain a detail design consultant. To advance the MMATMP components within Phase 1 of the annexation area an Infrastructure Implementation Plan was developed and an agreement was reached with the landowner groups in the annexation area to front end the cost of these capital improvements.

1:40 to 2:20 p.m. ***Session 5: Making the Last Mile Work: Interconnecting Systems for Complete Communities***

Presenter: Tamas Hertel, York Region

2:20 to 2:40 p.m. **Break and Supplier Showcase**

2:40 to 3:30 p.m. ***Session 6: Safety and Risk Management of Our Active Transportation System***

Presenter: Russell Brownlee, Giffin Koerth

Many of our Ontario municipalities and agencies have seen significant shifts in demand for active transportation modes over the past 10 years. They have and continue to answer the call, and are aggressively implementing dedicated and share facilities into their existing and new transportation infrastructure. This presentation will discuss a number of the key safety and risk management considerations in the design, operations, and maintenance of these facilities.

**BREAK**

4:30 to 6:00 p.m. **Group Activity: *The Amazing Race-Horseshoe Resort***


In your teams you will use the coordinates provided to orienteer around the resort property, locating different countries and participating in multiple challenges at some of the stations. The objective: To reach every destination, complete the challenges and get to the finish line.

6:30 p.m. **Dinner at Horseshoe Resort**



Above: Spirit Catcher  
Statue, City of Barrie



10c  
  
Above: Heritage Park, City of Barrie

TUESDAY, MAY 17

8:30 to 9:00 a.m. **AGM Registration and Breakfast**

9:10 to 9:30 a.m. **OTC Annual General Meeting**

The AGM features the 2015-2016 Annual Report from the OTC President, presentation of the OTC's Auditor Report for 2015 and an election to fill vacancies on the Board of Directors.

9:30 to 10:15 a.m. ***Session 7: Distracted Driving — From The Perspective of a Collision Reconstructionist***

Presenter: T/Sgt. Brett Carson, OPP

10:15 to 10:35 a.m. **Break and Supplier Showcase**

10:35 to 11:20 a.m. ***Session 8: New Pedestrian Crossover Design Practices***

Presenter: Ali Hadayeghi, CIMA+

The Ministry of Transportation has recently updated Ontario Traffic Manual (OTM) Book 15 – Pedestrian Crossing Treatments with an objective to promote uniformity in planning, design, and operation of pedestrian crossing treatments across Ontario. The manual outlines the legal requirements related to pedestrian crossings and provides various types of pedestrian crossings treatments within the Ontario legal framework. It also provides the guidelines for their design and a procedure for selecting a location specific pedestrian crossing treatment.

11:20 to 12:05 p.m. ***Session 9: Built for Walking: Safe Environments and Active School Transportation***

Presenter: Dr. Linda Rothman, York University

Active school transportation (AST) is an important source of physical activity for children. Only one in three Canadian children use AST; however, school travel represents the majority of children's exposure to traffic. Investigating injury risk during school travel is essential so AST can be promoted while minimizing risk. This presentation describes the relationship between walking to school and child pedestrian motor vehicle collisions and the importance of the built environment.

12:05 to 1:30 p.m. **Closing Lunch, Supplier Showcase and OTC Awards**

1:30 p.m. **Adjournment of the 66th Annual Convention**



**Ontario Traffic Council**

[www.etc.org](http://www.etc.org)

## 66th ANNUAL OTC CONFERENCE - HOTEL INFORMATION

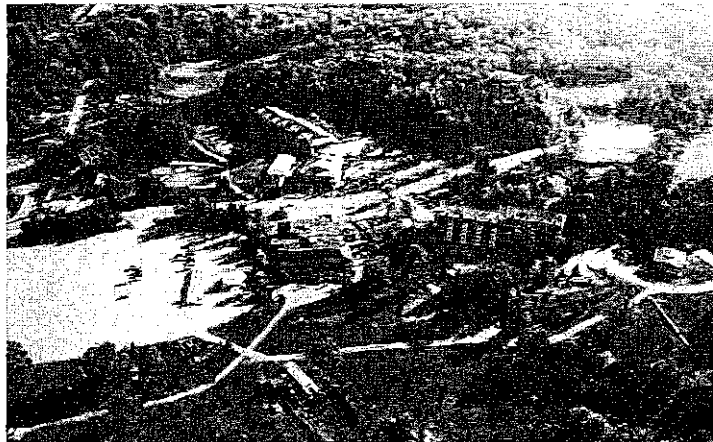
May 15—17, 2015

Horseshoe Resort, 1101 Horseshoe Valley Rd., Barrie, ON

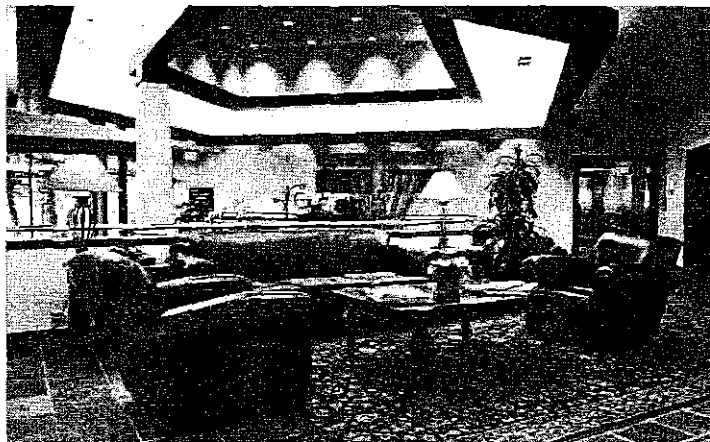
Booking line: 1 (800) 461-5627

Room Rate: \$136/night

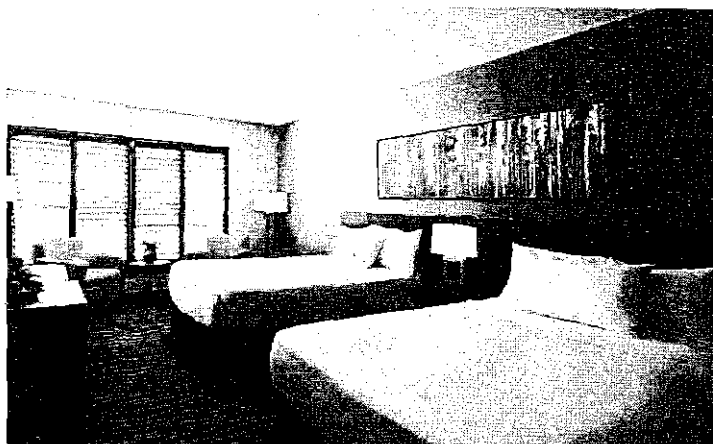
Please indicate that you will be part of the Ontario Traffic Council event.



*Horseshoe Resort: Exterior*



*Horseshoe Resort: Interior*



*Horseshoe Resort: Guest Suite*



10e

REGISTER  
ONLINE  
NOW AT

<http://www.otc.org>



**Ontario Traffic Council**

[www.otc.org](http://www.otc.org)

## 66th ANNUAL OTC CONFERENCE REGISTRATION

May 15-17, 2016

Horseshoe Resort

1101 Horseshoe Valley Rd.

Barrie, ON

Booking line: 1 (800) 461-5627



### FEES

- \$549.00 + HST for Members
- \$649.00 + HST for Non-members

## 66th OTC ANNUAL CONFERENCE REGISTRATION FORM

Name: \_\_\_\_\_

Title: \_\_\_\_\_

Organization Name: \_\_\_\_\_

Address: \_\_\_\_\_

City/Town: \_\_\_\_\_ Postal Code: \_\_\_\_\_

Phone: \_\_\_\_\_ Fax: \_\_\_\_\_

E-mail: \_\_\_\_\_

Call, Mail or Fax your registration form to:

Cheque(s) payable to:

**Ontario Traffic Council**

170 The Donway West, Suite 208

Toronto, Ontario M3C 2G3

Phone: 647-346-4050, Fax: 647-346-4060

E-mail: [info@otc.org](mailto:info@otc.org), Web site: [www.otc.org](http://www.otc.org)

VISA/MC Card # \_\_\_\_\_ Expiry date \_\_\_\_\_

Name on Card \_\_\_\_\_ Signature \_\_\_\_\_



5650 Hurontario Street  
Mississauga, ON, Canada L5R 1C6  
t 905.890.1010 1.800.668.1146  
f 905.890.6747  
[www.peelschools.org](http://www.peelschools.org)

December 10, 2015

Peter Westbrook, Chair  
Mississauga Traffic Safety Council  
City of Mississauga  
300 City Centre Drive  
Mississauga, ON L5B 3C1

Dear Mr. Westbrook:

**RE: Mississauga Traffic Safety Council**

I am pleased to advise that, at the Second Meeting of the Board held on December 1, 2015, Trustee Robert Crocker was again appointed as the Peel District School Board's representative on the Mississauga Traffic Safety Council. Trustee Nokha Dakroub was also appointed to serve as an alternate.

Any information for the meetings can be sent to Trustee Crocker at the H.J.A. Brown Education Centre or forwarded by e-mail to [robert.crocker@peelsb.com](mailto:robert.crocker@peelsb.com). Trustee Dakroub's email address is [nokha.dakroub@peelsb.com](mailto:nokha.dakroub@peelsb.com).

Sincerely,

A handwritten signature in black ink, appearing to read 'T Pontes'.

Tony Pontes  
Director of Education

c: Robert Crocker, Trustee, Mississauga – Wards 6 & 11  
Nokha Dakroub, Trustee, Mississauga – Wards 9 & 10  
David Neale, Controller, Corporate Support Services  
Tom Howe, Manager of Student Transportation Services

Trustees

Janet McDougald, Chair  
Suzanne Nurse, Vice-Chair  
Carrie Andrews  
Stan Cameron  
Robert Crocker  
Nokha Dakroub

David Green  
Sue Lawton  
Brad MacDonald  
Kathy McDonald  
Harkirat Singh  
Rick Williams

Director of Education and Secretary  
Tony Pontes

Associate Director,  
Instructional Support Services  
Scott Moreash

Associate Director,  
Operational Support Services  
Jaspal Gill



# Dufferin-Peel Catholic District School Board

40 Matheson Boulevard West, Mississauga, Ontario L5R 1C5 • Tel: (905) 890-1221 • Fax: (905) 890-7610

City of Mississauga  
Office of the City Clerk  
300 City Centre Drive  
Mississauga, ON  
L5B 3C1

February 22, 2016

Attention: Crystal Greer, City Clerk

Dear Ms. Greer

Re: Representation on Various Committees Established by Outside Agencies

I am pleased to advise you that Trustees Anna Abbruscato, Luz del Rosario, Sharon Hobin, Bruno Iannicca, Esther O'Toole, Mario Pascucci and Thomas Thomas have volunteered to serve on the following committees:

MISSISSAUGA BOARD OF TRADE

Anna Abbruscato, Luz del Rosario, Sharon Hobin,  
Bruno Iannicca, Esther O'Toole, Mario Pascucci,  
and Thomas Thomas

MISSISSAUGA PUBLIC LIBRARY BOARD

Thomas Thomas (2 year term)

MISSISSAUGA TRAFFIC SAFETY COUNCIL

Thomas Thomas (2016)

Information and material for the meetings can be forwarded to the trustees through the Dufferin-Peel Catholic District School Board, Catholic Education Centre, 40 Matheson Boulevard West, Mississauga, ON L5R 1C5, or directly to the trustee's home addresses:

Anna Abbruscato  
Thomas Thomas

The Board would appreciate receiving the dates of scheduled meetings in order to facilitate trustee attendance as much as possible. As well, the Board will try to ensure staff representation in the event that a trustee is unable to attend.

Yours truly,

Marianne Mazzorato,  
Director of Education

MM:cxf

c.c. Trustees Anna Abbruscato, Luz del Rosario, Sharon Hobin, Bruno Iannicca, Esther O'Toole, Mario Pascucci, Thomas Thomas

<b>RECEIVED</b>
REGISTRY No.
DATE MAR 03 2016
FILE No.
<b>CLERK'S DEPARTMENT</b>