

# AGENDA



---

## **FACILITY ACCESSIBILITY DESIGN SUBCOMMITTEE OF THE MISSISSAUGA ACCESSIBILITY ADVISORY COMMITTEE**

THE CORPORATION OF THE CITY OF MISSISSAUGA  
[www.mississauga.ca](http://www.mississauga.ca)

**MONDAY, MAY 25, 2015 – 1:30 P.M.**

Committee Room D, 2<sup>nd</sup> Floor, Civic Centre 300 City Centre Drive,  
Mississauga, Ontario, L5B 3C1

### Members

Clement Lowe, Citizen Member  
Mashkoo Sherwani, Citizen Member  
Asim Zaidi, Citizen Member  
Carol-Ann Chafe, *ex-officio* as Chair of AAC

CONTACT PERSON: Karen Morden, Legislative Coordinator  
Office of the City Clerk, Telephone: 905-615-3200, ext. 5471, Fax: 905-615-4181  
[karen.morden@mississauga.ca](mailto:karen.morden@mississauga.ca)

CALL TO ORDER

APPOINTMENT OF THE CHAIR

ITEMS FOR DISCUSSION

1. Fallingbrook Park and Garnetwood Park Washrooms

David Colussi, Workshop Architecture, Janet Lack, Project Manager, Park Development, and Wojciech Gurak, Project Manager, Facilities and Property Management presentation with respect to Fallingbrook Park and Garnetwood Park washrooms.

DATE OF NEXT MEETING

Accessibility Advisory Committee – Monday, June 1, 2015 at 2:00 PM at Mississauga Valley Community Centre, Program Room 1

Facility Accessibility Design Subcommittee - Monday, June 22, 2015 at 1:30 PM, Committee Room D, 2<sup>nd</sup> Floor, Civic Centre

ADJOURNMENT

**City of Mississauga FADS Presentation**

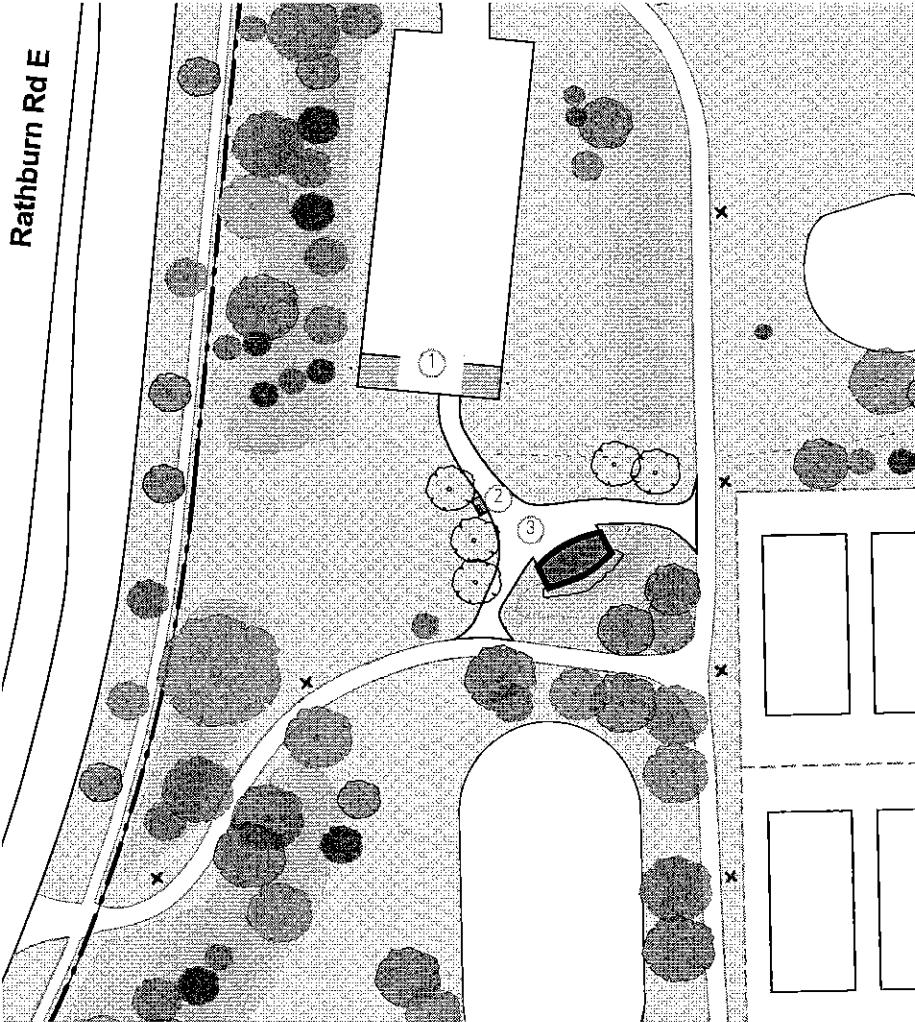
25 May 2015

**Garnetwood Park Washroom Building**

**Fallingbrook Community Park Washroom Building**

Designed in accordance with the  
City of Mississauga Facility Accessibility Design Standards  
2015 Draft Update

**WORKSHOP** architecture inc



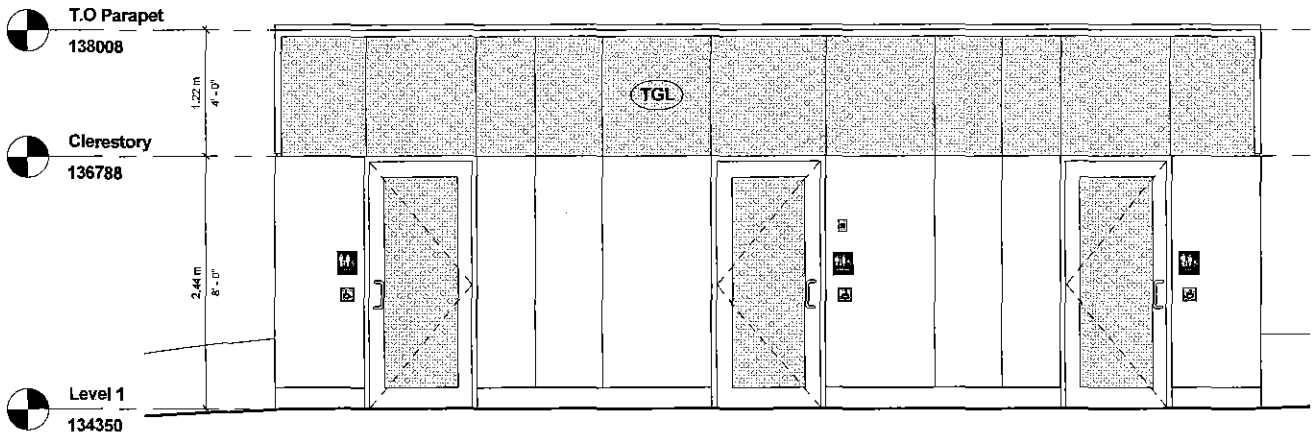
City of Mississauga - Garnetwood Park

Site Commentary

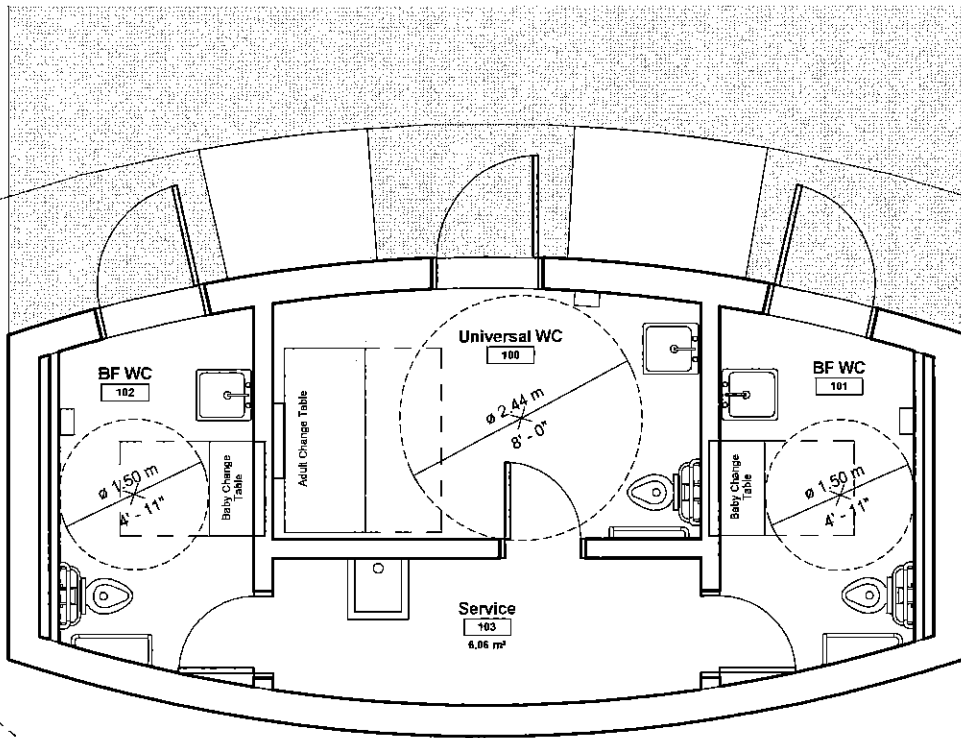
- 1. 2 new accessible parking spaces
- 2. New accessible bench
- 3. New 3m wide asphalt pedestrian pathways (less than 1:20 slope)

Garnetwood Park - partial site plan

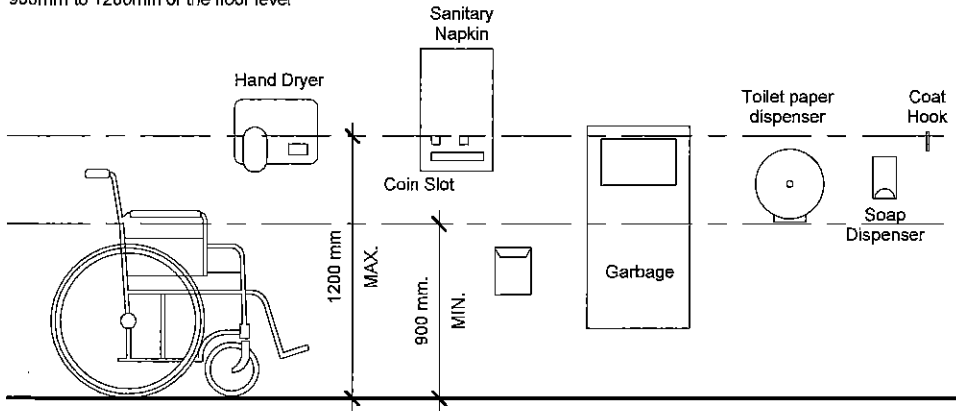
City of Mississauga - Garnetwood Park



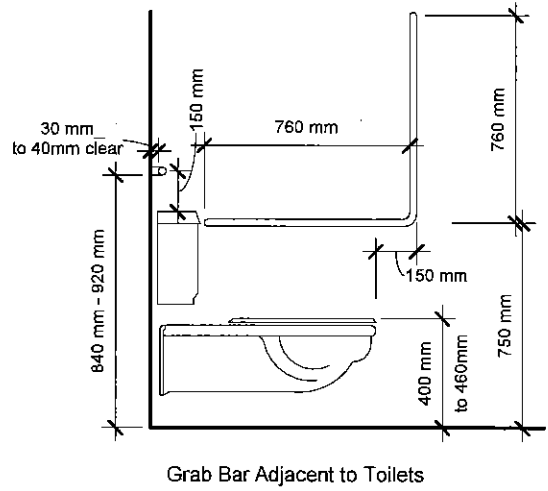
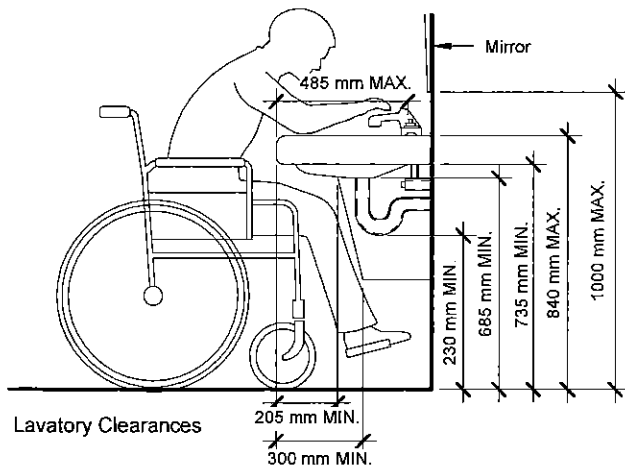
Garnetwood Park - Entrance/Approach

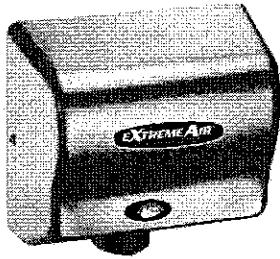


Washroom accesories must be located within 900mm to 1200mm of the floor level!

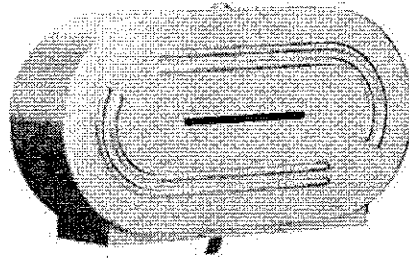


Washroom Accessory Mounting Heights

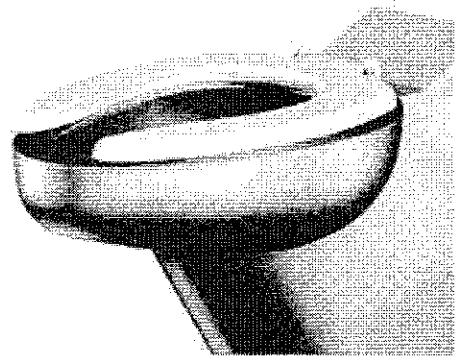




Touch-free Hand Dryer

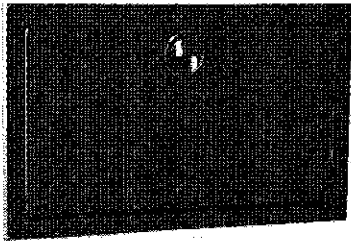


Toilet Paper Dispenser

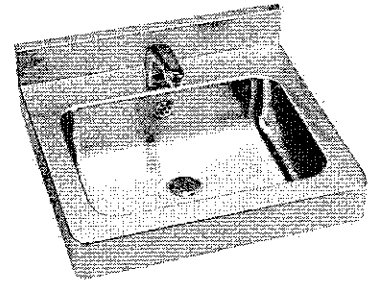
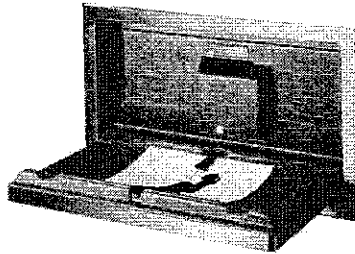


Toilet (with seat)

Washroom Fixtures Examples

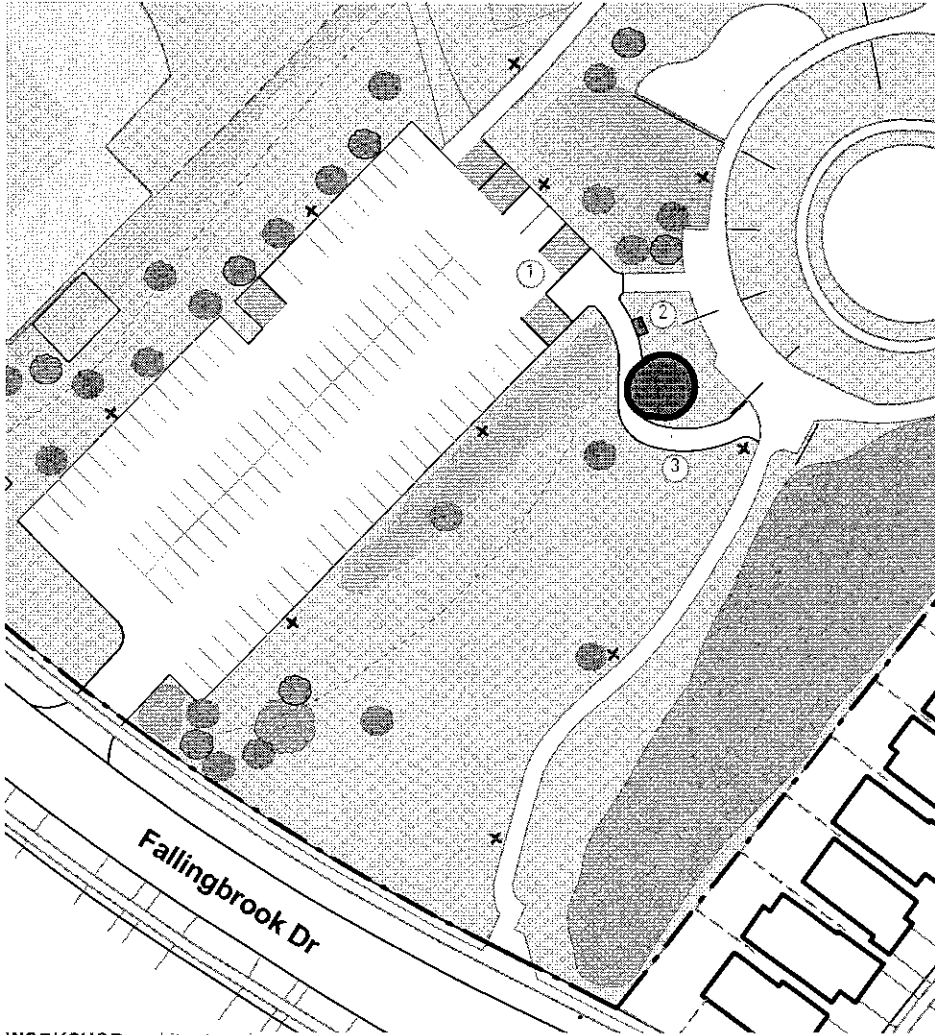


Fold-down Baby Change Table



Wall-mounted Sink with Touch-free Faucet



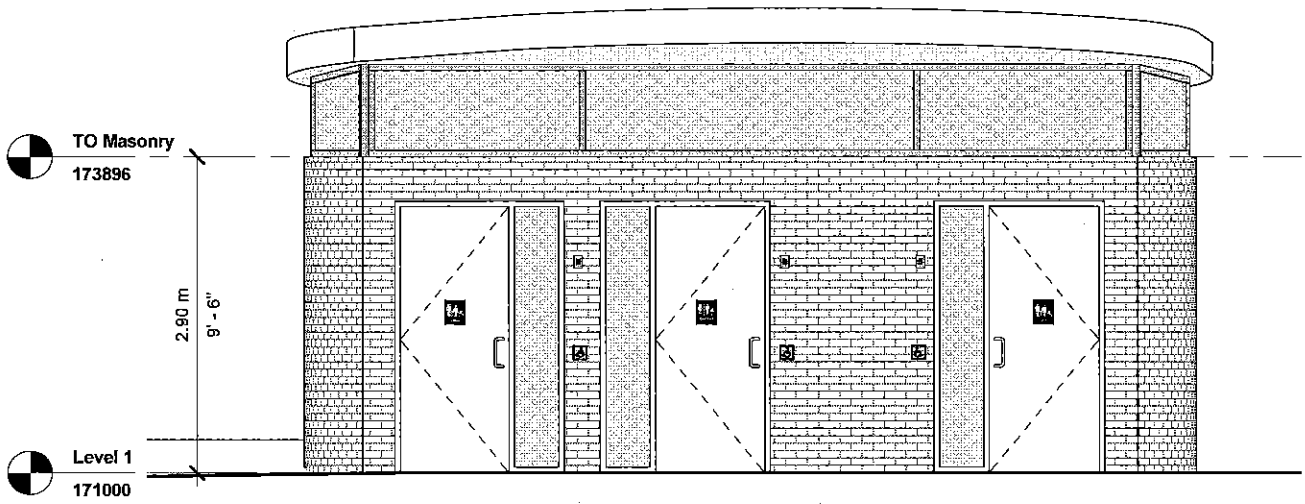


City of Mississauga - Fallingbrook Park

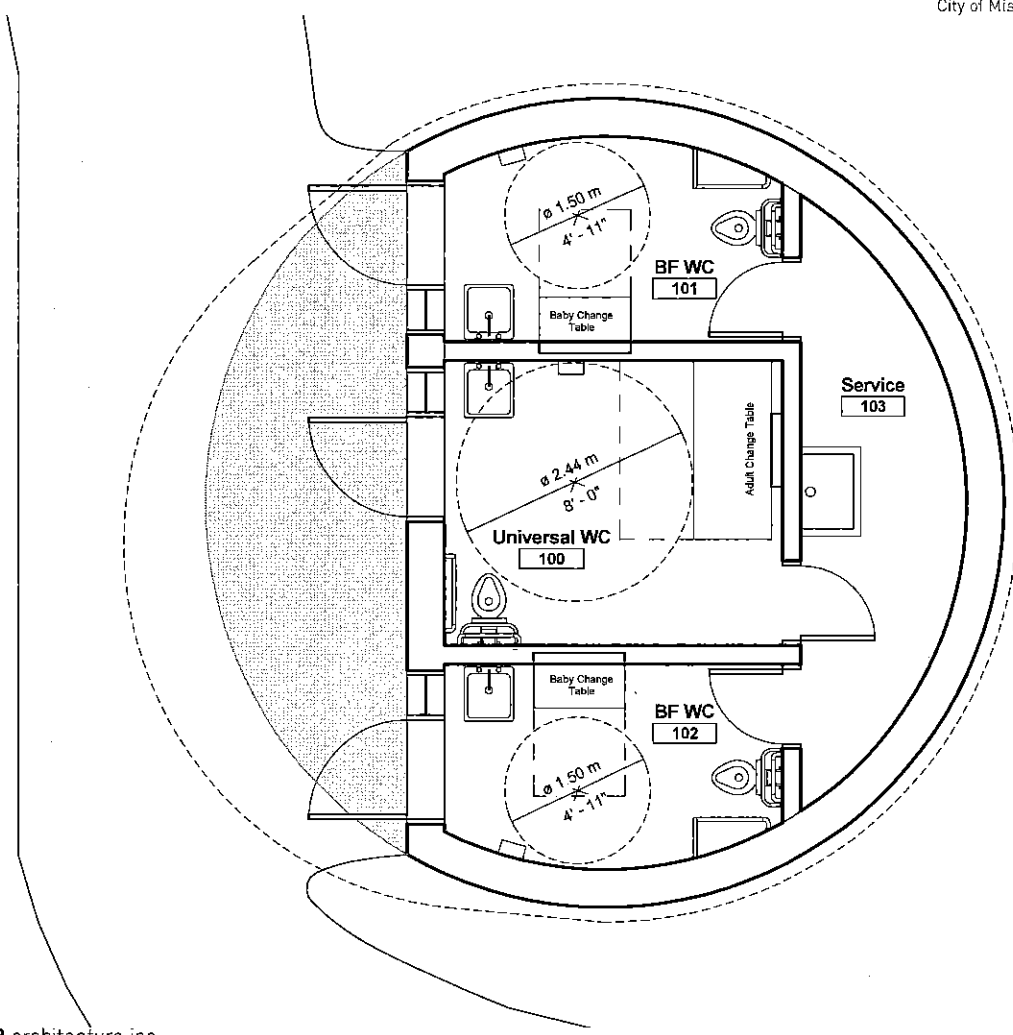
Site Commentary

- 1. 5 new accessible parking spaces
- 2. New accessible bench
- 3. New 3m wide asphalt pedestrian pathways (less than 1:20 slope)

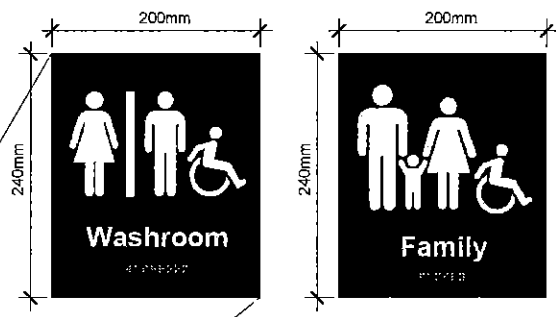
Fallingbrook Community Park - Partial Site Plan



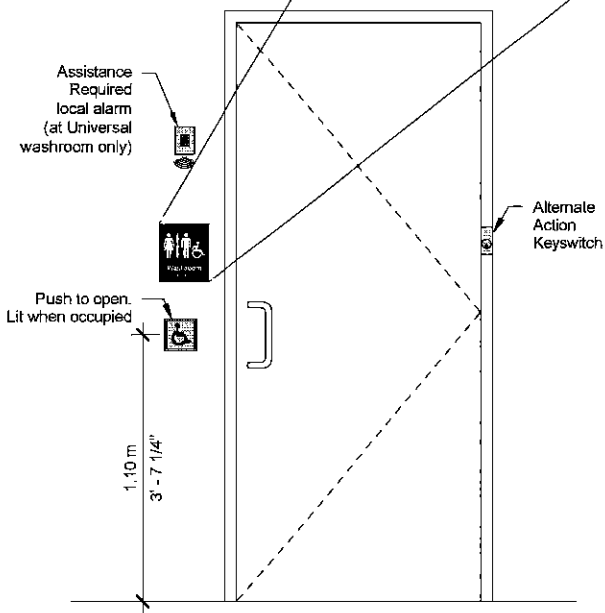
City of Mississauga - Fallingbrook Park



Fallingbrook Park - Accessibility Clearances



Exterior



Interior

