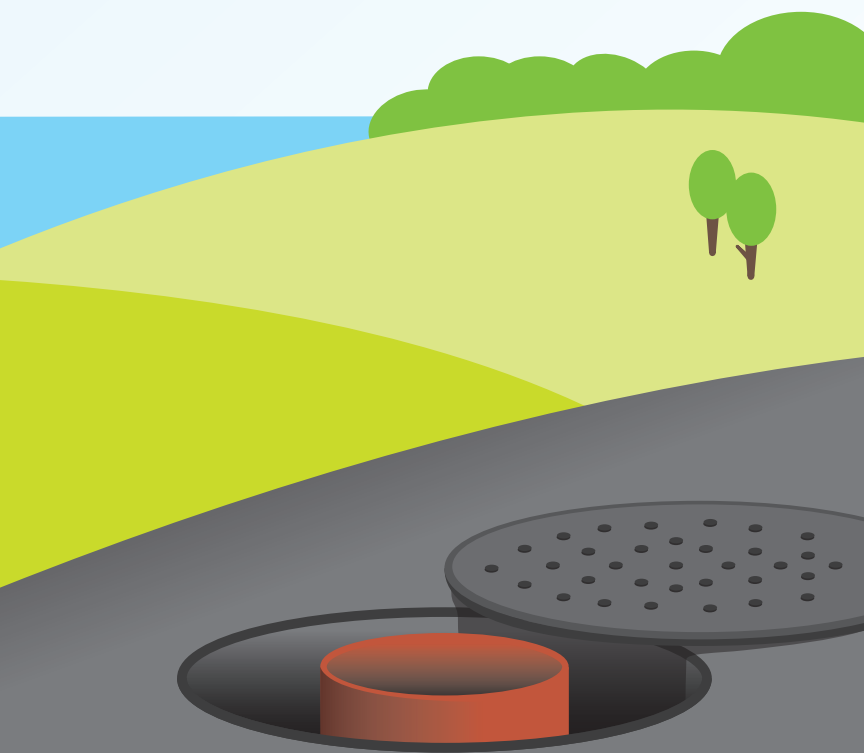


It's Our Environment to Protect

INSPECTING AND MAINTAINING
STORMWATER OIL AND GRIT SEPARATORS

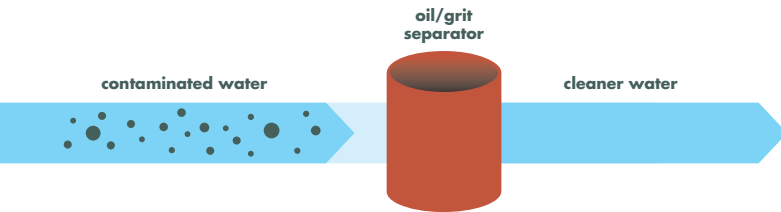


MISSISSAUGA

Leading today for tomorrow

What is a Stormwater Oil and Grit Separator?

A stormwater oil and grit separator is an underground device that captures oil and sediments from stormwater runoff and snowmelt. By capturing these contaminants it prevents them from entering our streams, rivers and eventually Lake Ontario through the City's storm sewer system.



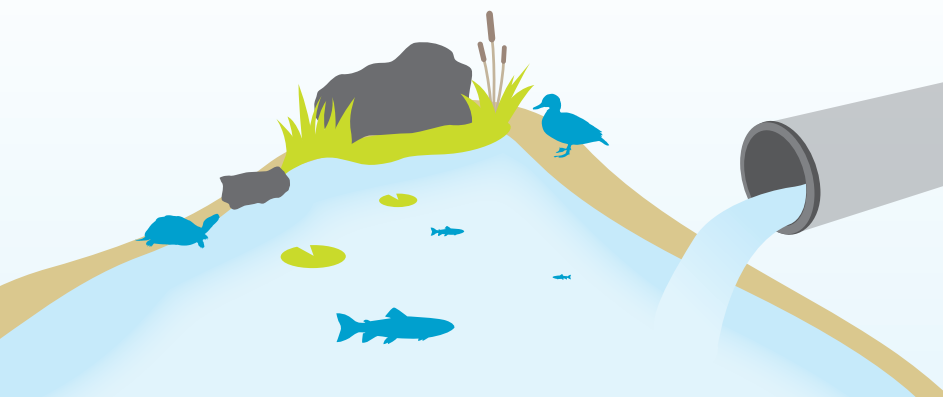
Where are Stormwater Oil and Grit Separators located?

- Industrial, commercial and institutional sites
- Gas stations
- Automotive service stations
- City property such as public works yards, arenas and some roadways where there is a possibility of a spill occurring

How do they work?

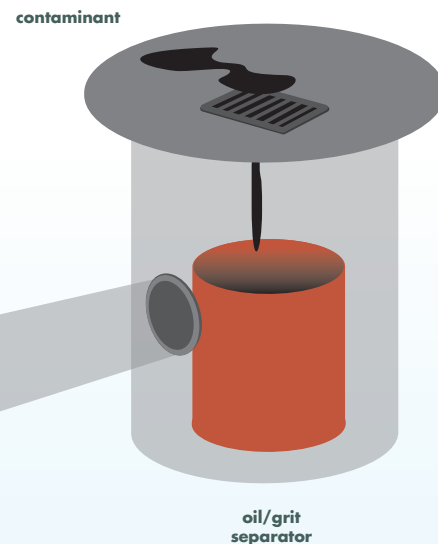
Oils and other pollutants collect on parking lots, driveways and roads and are carried to an oil and grit separator by rain and melted snow. A stormwater oil and grit separator is designed to separate oil and sediments into different containment areas until they can be cleaned out. The oily substances rise to the top of the containment area and sediment settles to the bottom of the unit, allowing cleaner water to drain directly into the City's storm sewer system.

Stormwater oil and grit separators are designed to collect a certain amount of sediment and oil before they need to be cleaned out. Cleaning frequency is dependent on site conditions such as the size of the drainage area and the type of activities undertaken on the site.



How are they inspected and cleaned?

1. Frequent inspections by a qualified service provider should be undertaken during the first years of the unit's service to determine the appropriate ongoing inspection schedule.
2. A qualified inspector will measure the depth of oil and sediment in the unit and compare them to the manufacturer's specifications.
3. If the specified depth of oil or sediment has reached the limit the inspector will advise that it must be cleaned out.
4. If cleaning has been recommended, it is the property owner's responsibility to retain a contractor, licensed by the Ministry of Environment, to ensure that it is properly cleaned out, usually by a vacuum truck. The oil and sediment must be disposed of in accordance with legislation.



Is there a consequence to not maintaining the unit?

If these units are not properly maintained, they will no longer capture oils and sediments and may cause contaminants to enter the storm sewer system. This may result in fines and/or charges laid against the owner under the City's Storm Sewer Use by-law 259-05, as amended.

We all have a role in protecting our environment

Any contaminant that drains into the storm sewer system flows untreated to our creeks and rivers and to Lake Ontario - Mississauga's source of drinking water.

Help protect our environment and take an active role in ensuring your stormwater oil and grit separator is in good working order by having it inspected by a qualified service provider and properly cleaned out when required.



Where can I learn more?

City of Mississauga
Transportation and Works Department
Environmental Services

Phone: Environmental Engineering Technologist
905-615-3200 ext. 5930

E-mail: **water.info@mississauga.ca**

Visit: **mississauga.ca/oilandgritseparators**

If you require this information in an alternate format, please contact Environmental Services at 905-615-3200 ext. 5930 or water.info@mississauga.ca