

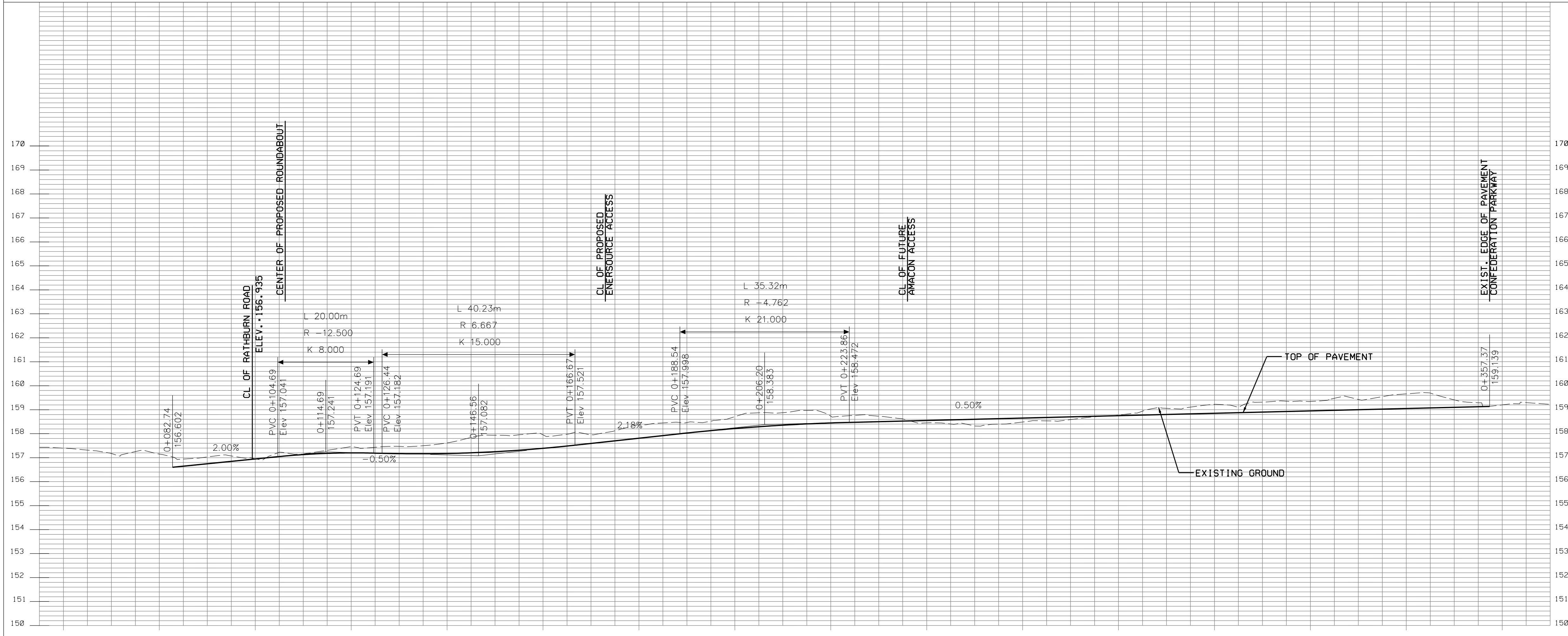
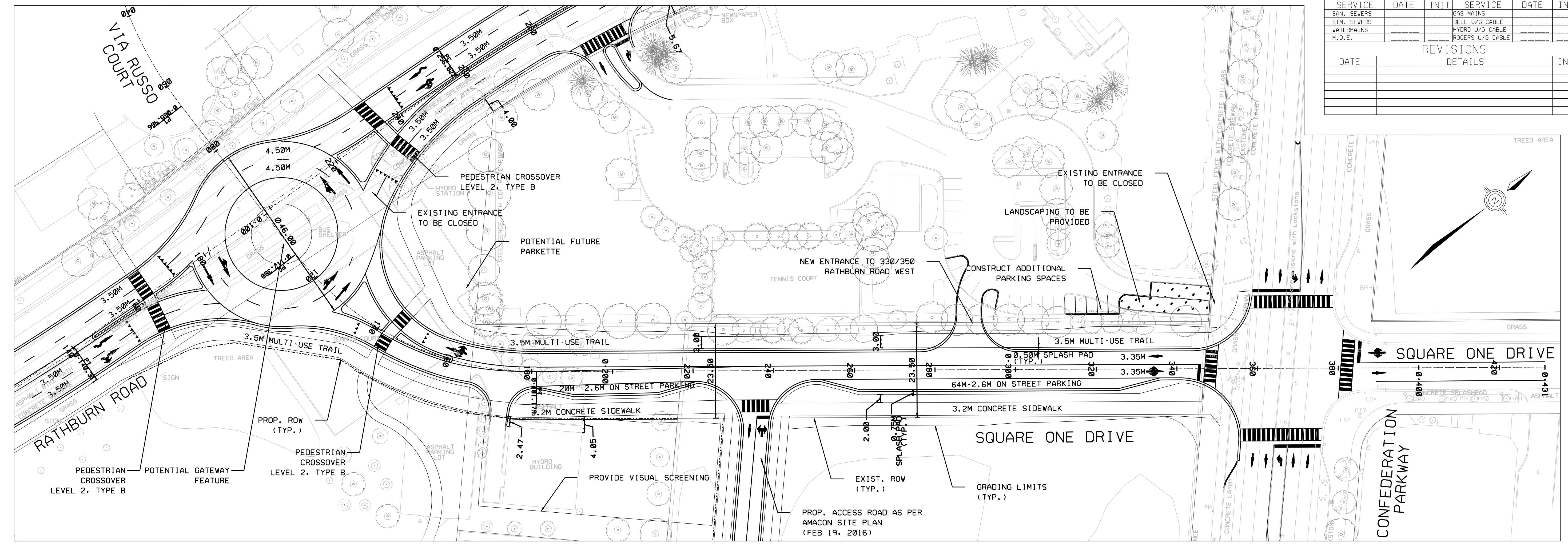
**Square One Drive Extension Municipal Class Environmental Assessment
Environmental Study Report**

Appendix L Preferred Design

Appendix L PREFERRED DESIGN

SERVICE DATA					
SERVICE	DATE	INITIALS	SERVICE	DATE	INITIALS
SAN. SEWERS			GAS MAINS		
STM. SEWERS			BELL U/G CABLE		
WATERMANS			HYDRO U/G CABLE		
M.O.E.			ROGERS U/G CABLE		

REVISIONS		
DATE	DETAILS	INITIALS



- GENERAL NOTES**
- ALL DRIVEWAYS ASPHALT UNLESS OTHERWISE NOTED
 - ALL SERVICE LOCATIONS ARE APPROXIMATE AND MUST BE LOCATED ACCURATELY IN FIELD
 - ALL MEASUREMENTS FOR THIS PROJECT ARE IN METRES AND/OR MILLIMETRES UNLESS OTHERWISE INDICATED
 - ALL SEWERS AND LATERALS TO HAVE CLASS 'B' BEDDING AND SAND COVER BACKFILL UNLESS OTHERWISE INDICATED
 - ALL UTILITY RELOCATION BY OTHERS
 - INFORMATION SHOWN HEREON IS FOR USE BY THE CITY OF MISSISSAUGA, TRANSPORTATION AND WORKS DEPARTMENT, AND IS NOT INTENDED FOR USE BY ANY OTHER PARTIES UNLESS EXPRESSED WRITTEN CONSENT IS OBTAINED. MEASUREMENTS SHOWN MUST BE CONFIRMED BY FIELD SURVEY BEFORE USE.
 - THIS IS NOT A PLAN OF SURVEY

DESIGN BY	APPROVED BY
_____ C.E.T.	_____
DEPARTMENTAL APPROVAL	
SILVIO CESARIO P.ENG.	

MISSISSAUGA

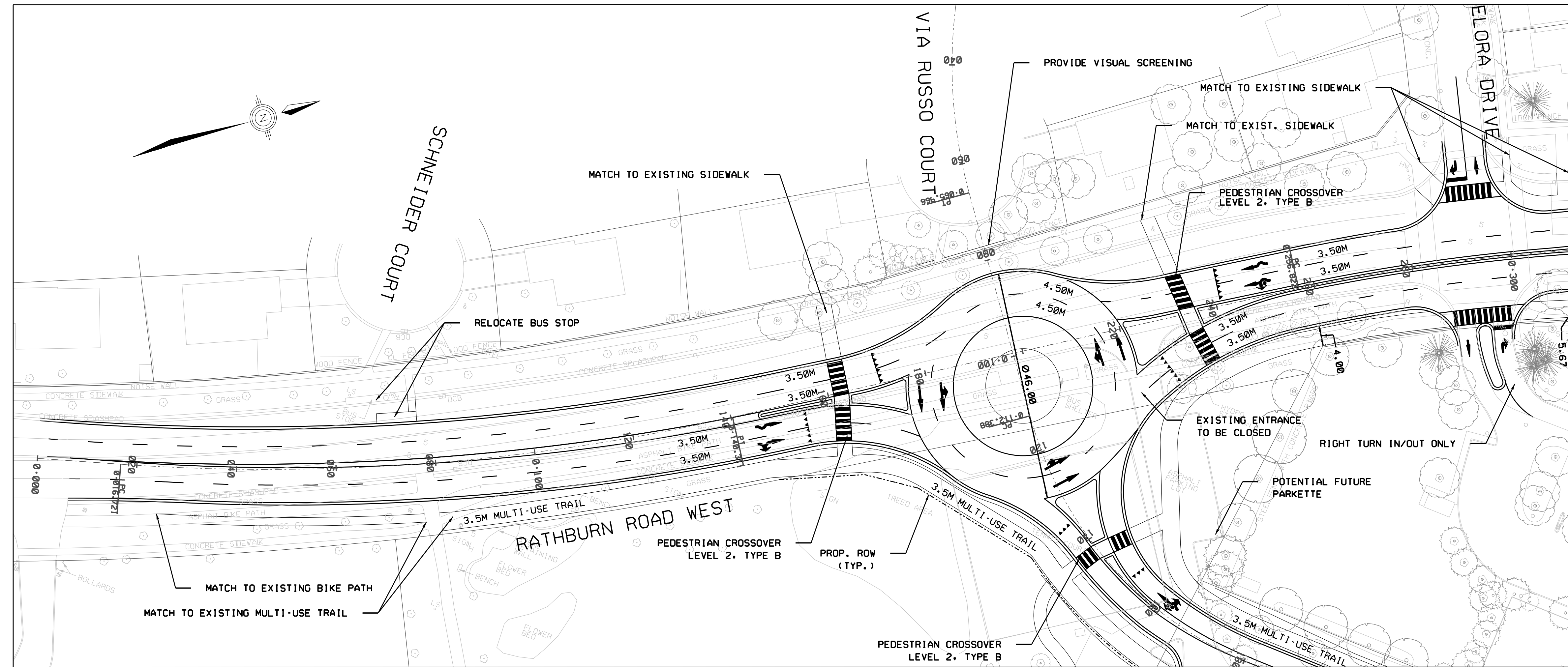
PRODUCED FOR - T&V, ENGINEERING AND WORKS

SQUARE ONE DRIVE EXTENSION CLASS EA

SQUARE ONE DRIVE PLAN AND PROFILE

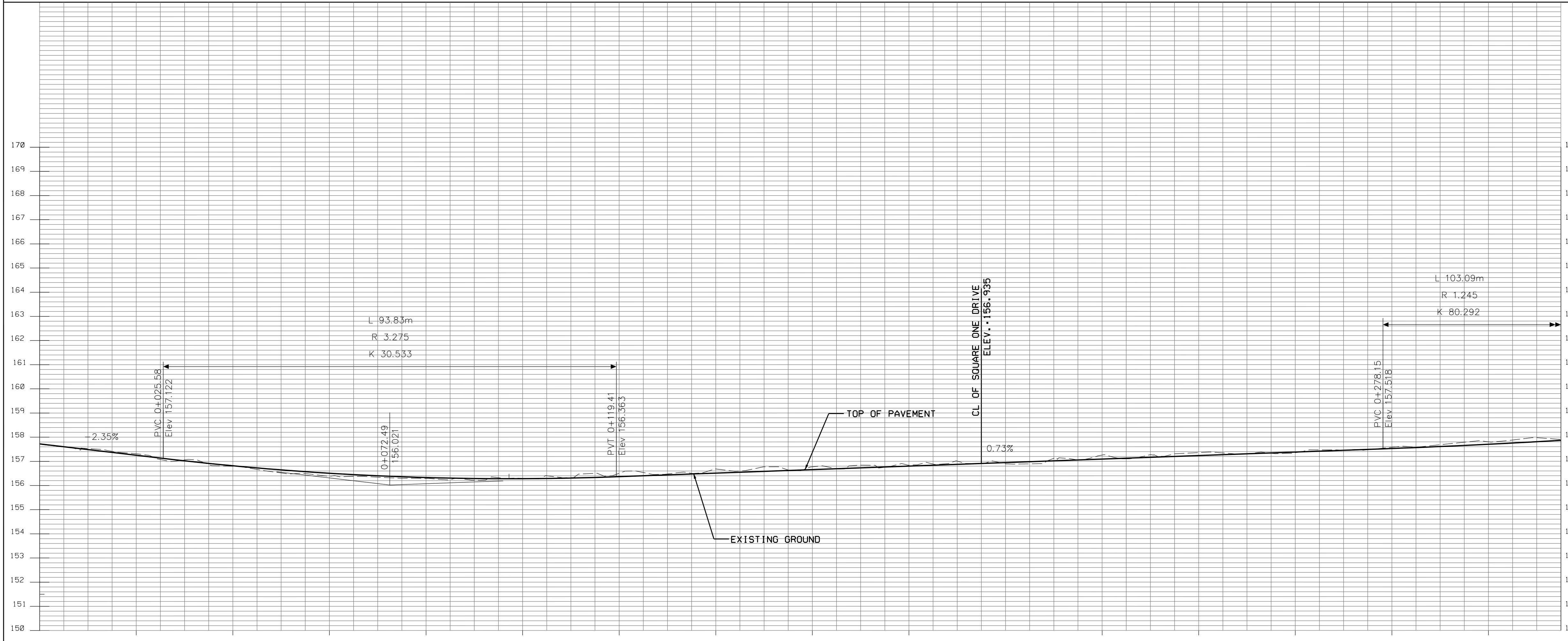
STA 0+060 - STA 0+360

157.40	157.15	156.947	157.201	157.176	157.390	157.811	158.217	158.449	158.552	158.652	158.752	158.852	158.952	159.052	FINAL RD. GR.
0+060	0+080	0+100	0+120	0+140	0+160	0+180	0+200	0+220	0+240	0+260	0+280	0+300	0+320	0+340	159.20 EXIST RD. GR.
DATE 2012/3/23															



SERVICE DATA					
SERVICE	DATE	INIT.	SERVICE	DATE	INIT.
SAN. SEWERS			GAS MAINS		
STM. SEWERS			BELL U/G CABLE		
WATERMAINS			HYDRO U/G CABLE		
M.O.E.			ROGERS U/G CABLE		

REVISIONS		
DATE	DETAILS	INIT.



- GENERAL NOTES
- ALL DRIVEWAYS ASPHALT UNLESS OTHERWISE NOTED
 - ALL SERVICE LOCATIONS ARE APPROXIMATE AND MUST BE LOCATED ACCURATELY IN FIELD
 - ALL MEASUREMENTS FOR THIS PROJECT ARE IN METRES AND/OR MILLIMETRES UNLESS OTHERWISE INDICATED
 - ALL SEWERS AND LATERALS TO HAVE CLASS 'B' BEDDING AND SAND COVER BACKFILL UNLESS OTHERWISE INDICATED
 - ALL UTILITY RELOCATION BY OTHERS
 - INFORMATION SHOWN HEREON IS FOR USE BY THE CITY OF MISSISSAUGA, TRANSPORTATION AND WORKS DEPARTMENT, AND IS NOT INTENDED FOR USE BY ANY OTHER PARTIES UNLESS EXPRESSED WRITTEN CONSENT IS OBTAINED. MEASUREMENTS SHOWN MUST BE CONFIRMED BY FIELD SURVEY BEFORE USE.
 - THIS IS NOT A PLAN OF SURVEY

DESIGN BY	APPROVED BY
_____ C.E.T.	_____
DEPARTMENTAL APPROVAL	
SILVIO CESARIO P.ENG.	

MISSISSAUGA
 PRODUCED FOR - T&V ENGINEERING AND WORKS
 SQUARE ONE DRIVE EXTENSION CLASS EA
 RATHBURN ROAD PLAN AND PROFILE
 STA 0+000 - STA 0+320

157.721	157.252	156.817	156.508	156.330	156.283	156.367	156.513	156.658	156.804	156.949	157.095	157.240	157.386	157.532	157.707	FINAL RD. GR.
157.72	157.31	156.79	156.38	156.29	156.30	156.51	156.69	156.77	156.84	156.90	157.26	157.36	157.36	157.58	157.81	EXIST. RD. GR.
0+000	0+020	0+040	0+060	0+080	0+100	0+120	0+140	0+160	0+180	0+200	0+220	0+240	0+260	0+280	0+300	CHAINAGE

SCALE	HORIZ. 1:500	AREA	PROJECT NO.
	VERT. 1:100		
C.A.O.D. BY	CHECKED BY	DATE	PLAN NO.
		2017/9/29	
		SHEET	OF

