

**Square One Drive Extension Municipal Class Environmental Assessment
Environmental Study Report**

Appendix A Consultation

A.1 STUDY NOTIFICATIONS

CITY OF MISSISSAUGA – NOTICE OF STUDY COMMENCEMENT

Municipal Class Environmental Assessment Study for the extension of Square One Drive

WHAT?

- The City of Mississauga has started studying the extension of Square One Drive, from Rathburn Road West to Confederation Parkway, as part of a study called a Class Environmental Assessment (Class EA).
- Two new intersections – one with Confederation Parkway, and another with Rathburn Road West – would be required for the roadway extension.

WHY?

- To improve access to, from, and within downtown Mississauga, and areas beyond.
- To support “multi-modal” transportation and encourage opportunities to travel by walking, cycling, and transit.
- To create a finer street grid in downtown Mississauga with an urban scale, more walkable blocks, new routing options for local trips, and better transit access.

HOW?

- The study will examine how traffic operates on nearby roadways – both now, and in the future – and determine ways to address any existing roadway safety concerns. It will also examine the impact of extending Square One Drive on the social, cultural, and natural environments, and develop measures to mitigate those impacts.
- Multiple Alternative Designs will be developed and evaluated by the Project Team and refined through public consultation (see below). The Project Team will then select a Preferred Alternative and develop a basic design for the roadway extension (called a preliminary design).
- At the end of the study, an Environmental Study Report (ESR) documenting the entire study process will be available for public review.

GET INVOLVED!

- Consultation is an important part of the Class EA process. Throughout the study, the City will make contact with various agencies and members of the community, and consider their opinions as part of any decisions that are made.
- Two Public Information Centres (PICs) will be held to present information related to the study and answer any questions you may have. Details regarding PICs will be advertised publicly and communicated to you directly as the study progresses.
- To find out more about project announcements and other information please visit the project website:

www.mississauga.ca/squareoneclasssea

WE WANT TO HEAR FROM YOU – PLEASE VISIT THE WEBSITE AND COMPLETE A SURVEY!

(if you require a hard copy of the survey, please contact the Project Team – see below)

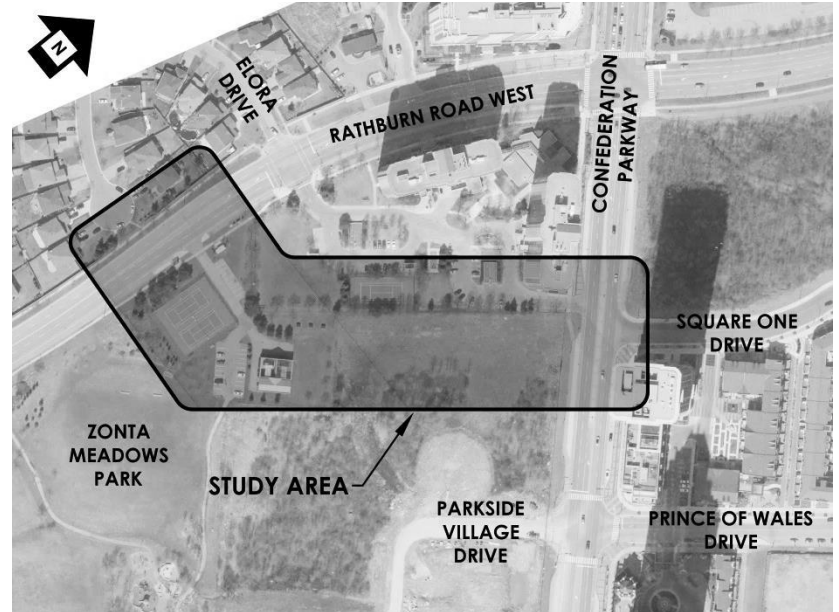
- If you have any questions or comments regarding the study (or wish to be removed from the study mailing list), please contact:

squareoneclasssea@stantec.com

Dana Glofcheskie, P.Eng.
Project Manager
 City of Mississauga
 201 City Centre Dr, Suite 800
 Mississauga, ON L5B 2T4
 (905) 615-3200, ext. 8243

Travis Brown, PMP
Consultant Project Manager
 Stantec Consulting Ltd.
 300W – 675 Cochrane Dr
 Markham, ON L3R 0B8
 (905) 944-6866

WHERE?



This notice signals the commencement of the Class EA, a study which will define the problem, identify/evaluate alternative solutions, and determine a preferred design in consultation with regulatory agencies and the public. The study is being undertaken in accordance with the planning and design process for Schedule 'C' projects, as outlined in the "Municipal Class Environmental Assessment" document (October 2000, amended in 2011), which is approved under the Ontario *Environmental Assessment Act*.

Personal information is collected under the authority of the Environmental Assessment Act and will be used in the assessment process. With exception of personal information, all comments shall become part of the public records. Questions about this collection should be directed to the Project Manager listed above.

This notice was first issued on March 31, 2016.

CITY OF MISSISSAUGA – NOTICE OF PUBLIC INFORMATION CENTRE

Municipal Class Environmental Assessment Study for the extension of Square One Drive

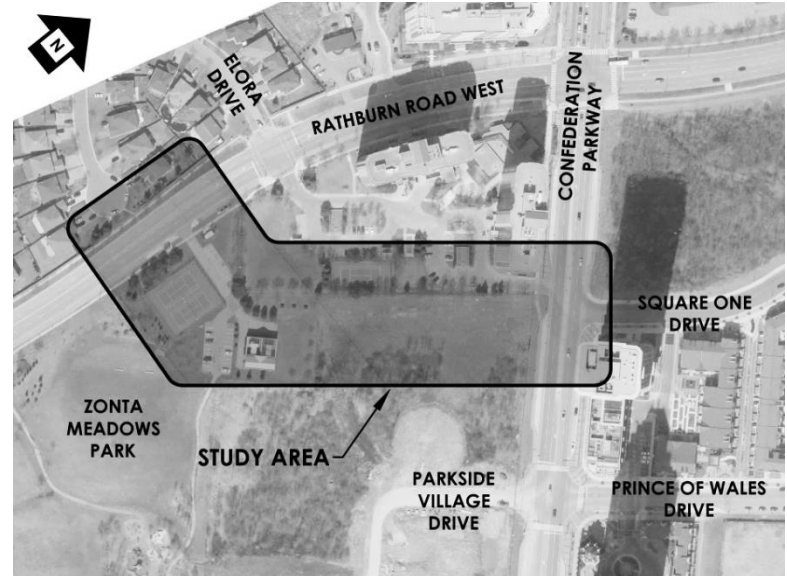
WHAT?

- The City of Mississauga has started studying the extension of Square One Drive, from Rathburn Road West to Confederation Parkway, as part of a study called a Class Environmental Assessment (Class EA).
- Two new intersections – one with Confederation Parkway, and another with Rathburn Road West – would be required for the roadway extension.

WHY?

- To improve access to, from, and within downtown Mississauga, and areas beyond.
- To support “multi-modal” transportation and encourage opportunities to travel by walking, cycling, and transit.
- To create a finer street grid in downtown Mississauga with an urban scale, more walkable blocks, new routing options for local trips, and better transit access.

WHERE?



GET INVOLVED!

- Consultation is an important part of the Class EA process. During the study, the Project Team will contact various agencies, as well as members of the community who live and/or work near the study area (called stakeholders). Their opinions will be considered as part of any decisions that are made.
- Two workshops (called Public Information Centres, or PICs) will take place so that attendees can review study progress, and discuss any questions or comments with the Project Team directly.
- At PIC #1, the Project Team will present information on the study area as it is today, preliminary concepts for the extension of Square One Drive, the Project Team’s evaluation of those concepts, and upcoming study activities.

WE WANT TO HEAR FROM YOU – PLEASE ATTEND PUBLIC INFORMATION CENTRE #1!

5:30 – 8:00pm

Wednesday, June 22, 2016

The Great Hall, Mississauga City Hall, 300 City Centre Dr, Mississauga, ON

To find out more about study announcements and other information, please visit the study website:

www.mississauga.ca/squareoneclassea

If you have any questions or comments regarding the study, or wish to be removed from the study mailing list, please contact:

squareoneclassea@stantec.com

(or complete a comment sheet after the PIC on our study website)

Dana Glofcheskie, P.Eng.
Project Manager
City of Mississauga
201 City Centre Dr, Suite 800
Mississauga, ON L5B 2T4
(905) 615-3200, ext. 8243

Travis Brown, PMP
Consultant Project Manager
Stantec Consulting Ltd.
300W – 675 Cochrane Dr
Markham, ON L3R 0B8
(905) 944-6866

Personal information is collected under the authority of the Environmental Assessment Act and will be used in the assessment process. With exception of personal information, all comments shall become part of the public records. Questions about this collection should be directed to the City of Mississauga Project Manager listed above.

This notice was first published on June 9, 2016.

CITY OF MISSISSAUGA – NOTICE OF PUBLIC INFORMATION CENTRE

Municipal Class Environmental Assessment Study for the extension of Square One Drive

WHAT?

- The City of Mississauga is studying the extension of Square One Drive, from Rathburn Road West to Confederation Parkway, as part of a study called a Class Environmental Assessment (Class EA).

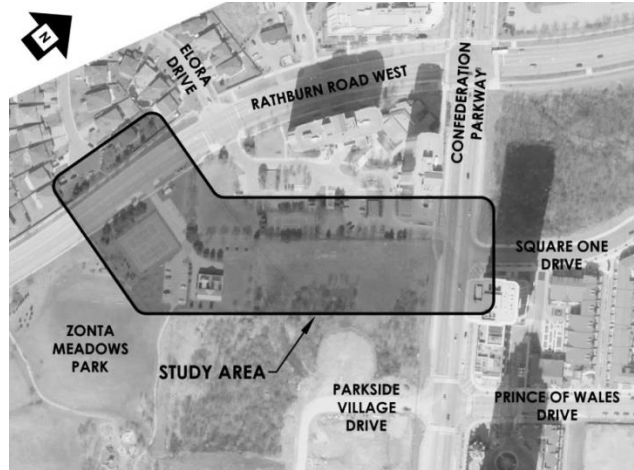
WHY?

- To improve access to, from, and within downtown Mississauga, and areas beyond.
- To support “multi-modal” transportation and encourage opportunities to travel by walking, cycling, and transit.
- To create a finer street grid in downtown Mississauga with an urban scale, more walkable blocks, new routing options for local trips, and better transit access.

HOW?

- By building the extension of Square One Drive as a two-lane local street between Confederation Parkway and Rathburn Road West, including:
 - a sidewalk on the south side of the street and a multi-use trail on the north side of the street
 - on-street parking
 - landscaping, streetscaping, and improved access to Zonta Meadows Park
- a roundabout where the Square One Drive extension meets Rathburn Road West
- removing the traffic signal at the intersection of Rathburn Road West and the east leg of Elora Drive (just west of Confederation Parkway) and extending a raised median through the intersection to restrict it to right-turns in and out only

WHERE?



GET INVOLVED!

- Consultation is an important part of the Class EA process. During the study, the Project Team will contact various agencies, as well as members of the community who live and/or work near the study area (called stakeholders). Their opinions will be considered as part of any decisions that are made.
- Two workshops (called Public Information Centres, or PICs) will take place during the study so that attendees can review progress, and discuss any questions or comments with the Project Team directly. PIC #1 took place on June 22, 2016.
- At PIC #2, the Project Team will present preliminary designs for the extension of Square One Drive, their evaluation of those designs, and upcoming study activities.

WE WANT TO HEAR FROM YOU – PLEASE ATTEND PUBLIC INFORMATION CENTRE #2!

6:00 – 8:00pm

Thursday, November 17, 2016

The Great Hall, Mississauga City Hall, 300 City Centre Dr, Mississauga, ON

To find out more about study announcements and other information, please visit the study website:

www.mississauga.ca/squareoneclassea

If you have any questions or comments regarding the study, or wish to be removed from the study mailing list, please contact:

squareoneclassea@stantec.com

(or complete a comment sheet after the PIC on our study website)

If you are receiving this notice as the tenant of a property near the study area, please provide a copy to your landlord.

Dana Glofcheskie, P.Eng.
Project Manager
 City of Mississauga
 201 City Centre Dr, Suite 800
 Mississauga, ON L5B 2T4
 (905) 615-3200, ext. 8243

Travis Brown, PMP
Consultant Project Manager
 Stantec Consulting Ltd.
 300W – 675 Cochrane Dr
 Markham, ON L3R 0B8
 (905) 944-6866

NOTICE OF STUDY COMPLETION

Municipal Class Environmental Assessment Study for the Extension of Square One Drive

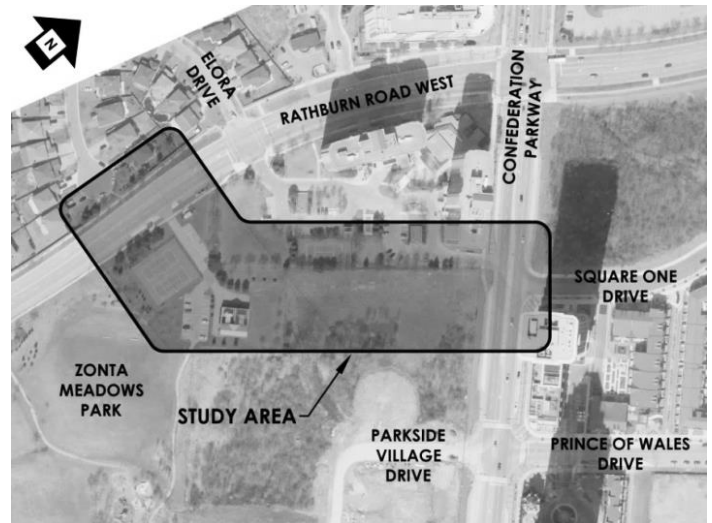
The City of Mississauga has completed a Municipal Class Environmental Study for the extension of Square One Drive, from Rathburn Road West to Confederation Parkway (the "Study"). This Study was conducted in accordance with the planning and design process for 'Schedule C' projects as outlined in the Municipal Engineers Association Municipal Class Environmental Assessment document, as amended in 2015, which is approved under the Ontario *Environmental Assessment Act*.

The Study was undertaken to investigate the need to:

- improve access to, from, and within downtown Mississauga, and areas beyond;
- support multi-modal transportation and encourage opportunities to travel by walking, cycling, and transit; and
- create a finer street grid in downtown Mississauga with an urban scale, more walkable blocks, new routing options for local trips, and better transit access.

Based on the findings of the Study, the Preferred Design for the extension of Square One Drive generally includes the following key elements:

- a sidewalk on the south side of the street and a multi-use trail on the north side of the street;
- on-street parking on the south side of the street;
- a roundabout where the extension of Square One Drive meets Rathburn Road West; and
- removal of the existing traffic signal at the intersection of Rathburn Road West and the east leg of Elora Drive (just west of Confederation Parkway) and construction of a raised median through the intersection to restrict it to right-turns in and out only.



The Environmental Study Report ("ESR") has been prepared to document the planning and decision-making process for this Study. By this Notice, the ESR is being placed on the public record for a thirty (30) day review period from and including November 6, 2017 to December 6, 2017 at the following locations:

The City of Mississauga
Office of the City Clerk
300 City Centre Drive, 2nd Floor
Mississauga, ON L5B 3C1
Telephone: (905) 615-4311
Monday-Friday: 8:30 am to 4:30 pm
Weekends: Closed

Courtneypark Branch Library
730 Courtneypark Drive West
Mississauga, ON L5W 1L9
Telephone: (905) 615-4745
Monday-Friday: 8:00 am to 9:00 pm
Saturday: 9:00 am to 5:00 pm
Sunday: 1:00 pm to 5:00 pm

A copy of the ESR is also available on the City of Mississauga website: www.mississauga.ca/squareoneclassea

Interested persons may provide written comments to the City of Mississauga's Project Manager, Dana Glofcheskie, P.Eng. (see contact information below). If concerns regarding this project cannot be resolved in discussions with the City of Mississauga, a person or party may request the Minister of the Environment and Climate Change to make an order (referred to as a Part II Order) for the project to comply with Part II of the Environmental Assessment Act which addresses Individual Environmental Assessments. The written request must be received by the Minister within the thirty (30) calendar day review period, with a copy to the Director, Environmental Approvals Branch and the City of Mississauga Project Manager.

Honorable Chris Ballard
Minister of Environment and Climate Change
77 Wellesley Street West, 11th Floor
Toronto, ON M7A 2T5
minister.moecc@ontario.ca

Director, Environmental Approvals Branch
Ministry of the Environment and Climate Change
135 St. Clair Avenue West, 1st Floor
Toronto, ON M4V 1P5

City of Mississauga Project Manager
Dana Glofcheskie, P. Eng.
201 City Centre Drive, Suite 800
Mississauga, ON L5B 2T4
Tel: (905) 615-3200, ext. 8243
dana.glofcheskie@mississauga.ca

Personal information is collected under the authority of the Environmental Assessment Act and will be used in the assessment process. With exception of personal information, all comments shall become part of the public records. Questions about this collection should be directed to the City of Mississauga Project Manager listed above.

This notice was first published on November 2, 2017.