



THE CORPORATION OF THE CITY OF MISSISSAUGA

BY-LAW NUMBER 0113-2015

A by-law to amend By-law Number 0225-2007, as amended.

WHEREAS pursuant to section 36 of the *Planning Act*, R.S.O. 1990, c.P.13, as amended, the council of a local municipality may enact a by-law to remove a holding symbol or provision;

NOW THEREFORE the Council of The Corporation of the City of Mississauga ENACTS as follows:

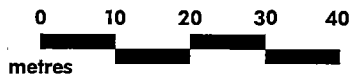
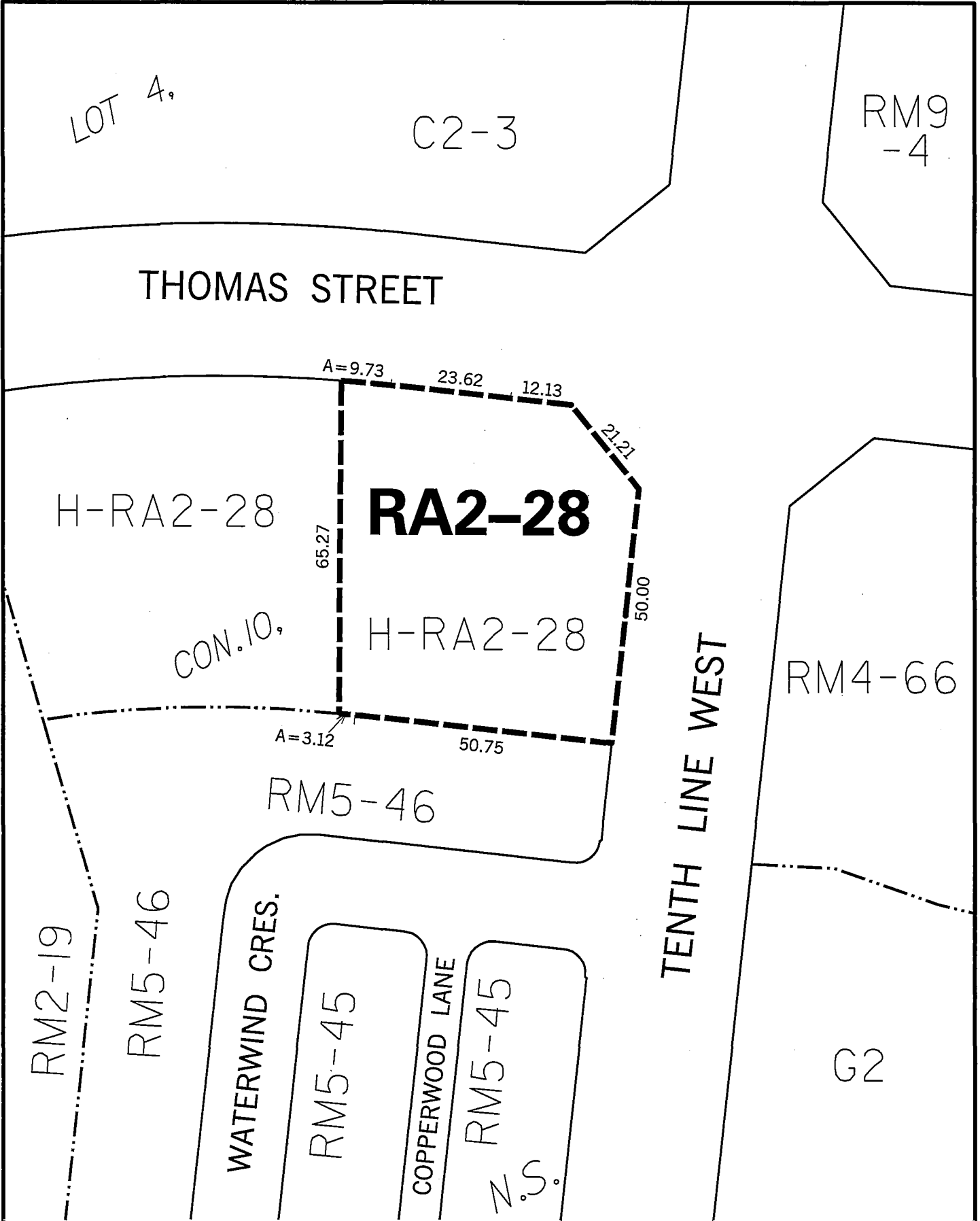
1. Map Number 57 of Schedule "B" to By-law Number 0225-2007, as amended, being a City of Mississauga Zoning By-law, is amended by changing thereon from "H-RA2-28" to "RA2-28", the zoning of Block 2, Plan 43M-1493 and Block 248, Plan 43M-1495, in the City of Mississauga, PROVIDED HOWEVER THAT the "RA2-28" zoning shall only apply to the lands which are shown on the attached Schedule "A", which is deemed to be an integral part of this By-law, outlined in the heaviest broken line with the "RA2-28" zoning indicated thereon.

ENACTED and PASSED this 13 day of May 2015.

APPROVED AS TO FORM City Solicitor MISSISSAUGA			
MST			
Date	04	5	15

Bonnie Cowhig  
MAYOR

W. O. Zubrow  
CLERK



This is not a Plan of Survey. For accurate boundary information refer to Plan 43R-35334.

**THIS IS SCHEDULE "A" TO  
BY-LAW 0113-2015**

**PASSED BY COUNCIL ON  
May 13, 2015**

**CITY OF MISSISSAUGA**

## APPENDIX "A" TO BY-LAW NUMBER 0113-2015

### Explanation of the Purpose and Effect of the By-law

This By-law removes the holding provision on the property outlined on the attached Schedule "A" from "H-RA2-28" (Apartment Dwellings - Exception) to "RA2-28" (Apartment Dwellings - Exception).

Upon removal of the "H" provision, "RA2-28" zoning permits an apartment dwelling, a long-term care dwelling and a retirement dwelling.

### Location of Lands Affected

Lands located at the southwest corner of Thomas Street and Tenth Line West in the City of Mississauga, as shown on the attached Map designated as Schedule "A".

Further information regarding this By-law may be obtained from Lauren Eramo-Russo of the City Planning and Building Department at 905-615-3200 ext. 5403.

### NOTE:

PURSUANT TO SECTION 36 OF THE *PLANNING ACT*, R.S.O. 1990, c.P.13, AS AMENDED, THIS BY-LAW SHALL COME INTO FORCE UPON THE DATE OF ENACTMENT BY CITY COUNCIL.

k:\plan\devcont\group\wpdata\bylaws\cd.21-tho.ler.jmcc.docx