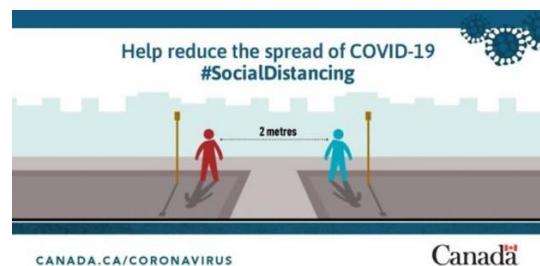
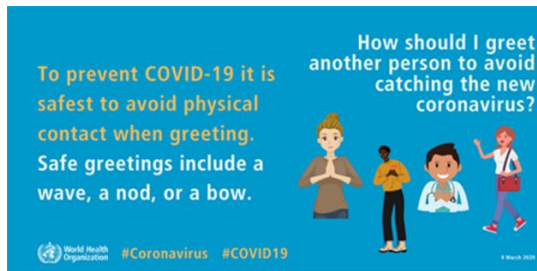


A Guide to Responsible Physical Distancing for Boaters



The following pages outline current guidelines and responsibilities of what boaters should **expect** and are required to **respect** when coming to the marina. This guide has been adapted from the Boating Ontario Association's 'A Guide to Responsible Social Distancing for all Boaters'. **This information may change based on recommendations or guidance from the Province or Peel Public Health.**

These guidelines have been put in place to help protect the health and safety of our staff as well as our boaters. They are subject to change and will remain in place as long as directed by our government, health care professionals and as deemed necessary by management. We encourage all boaters to regularly check government websites for current regulations and recommendations.

For more information please visit: mississauga.ca/coronavirus.

Arrival

Parking Areas

- Leave space between vehicles / park in every other spot where possible
- If two vehicles arrive at the same moment and park beside each other one vehicle / family waits in their vehicle while the first to arrive unloads and moves from their vehicle to their boat

Route from Vehicle to Boat

- Proceed directly to your boat fully respecting Physical Distancing (2 metres / 6 feet)

Loading/Unloading

- In order to reduce the number of high touch point surfaces, dock carts will not be available. We suggest packing bags and bins accordingly.

Contractors

- All contractors are to check-in with marina staff prior to accessing the docks. Contractors will not be permitted on the marina docks after business hours unless deemed an emergency by the Marina Supervisor.

Marina Life

As our situation evolves park amenities near our Marinas such as picnic areas, playgrounds, etc. will be opened under Provincial and Peel Public Health directives.

Garbage and Recycling

- Garbage and recycling will be available daily

Washrooms

- Boaters are encouraged to use onboard facilities as much as possible.
- Washrooms will be open and limited to one boater at a time; they will be closed for frequent cleaning (four times a day).

Showers

- Boaters are encouraged to use onboard facilities as much as possible.
- One shower will be available; shower will be closed for frequent cleanings (four times a day).

Laundry Facilities

- Boaters are encouraged to use onboard facilities as much as possible.
- Laundry facilities will be cleaned on a regular basis.

Marina Services

Transactions

- We are unable to accept cash transactions at this time.
- Credit/debit cards will be accepted for payment.
- Our credit/debit machine will be regularly cleaned.

Fuel Dock

- As per the Technical Standards & Safety Authority (TSSA), only marina staff are permitted to fill a vessel and all non-staff must be off the boat before fueling can begin. Boaters are to move away from the boat to allow safe physical distancing for our fuel dock attendants.
- We encourage you to allow our staff to fill your fuel tank when we launch. Please call or email the marina to discuss your needs.
- To limit the number of boats and therefore the number of people on the docks, only one boat at a time will be allowed at the fuel dock.

Pump out services

- Pump outs will still be available. Marina staff are to use their keys to remove and replace the waste cap and will be the only ones handling the pump out process. Our staff will be wearing personal protective equipment during the procedure.
- To limit the number of boats and therefore the number of people on a dock, we will only be allowing one boat at a time.

On and Around the Docks

Food and Drink

- All food and drink is to be consumed on your boat only. Eating or drinking on the marina property or anywhere on the docks will not be permitted.
- Our concession stand remains closed. Date of opening is unknown at this time.

Barbecues

- Boaters are encouraged to use onboard cooking facilities
- Barbecues will not be permitted on the dock system.

Social Gatherings

- Gatherings are not to take place on the docks, walkways, shore or elsewhere on the marina property.
- Gatherings on your boat should be limited to members of your immediate household and should not be greater than 5 people.
- All marina-sponsored events will be modified or postponed.

Walking on Docks

Our docks are narrow and physical distancing recommendations cannot be met. Please look at foot traffic on the docks and wait until anyone on the dock has reached their boat or land before proceeding to access the docks.

We encourage all boaters to respect physical distancing at all moments on the property and on the water. Only go boating with those in your immediate household. We encourage all boaters to wash/sanitize their hands frequently and use recommended Personal Protective Equipment to protect themselves wherever possible.

The summer of 2020 presents a wonderful opportunity to get off the docks, venture out onto the water, find a new bay, cove or fishing hole and enjoy your boat. Please be mindful while you are out there—rafting multiple boats together is not recommended.

We look forward to serving you and your family and to safely continuing to take care of all your boating needs.



How to Social Distance on a Boat

 Only boat with those in your immediate household - no guests!

Prearrange fueling & maintain distance at fuel and service docks 

 Keep your distance on the water - no rafting

Don't beach your boat right beside another boat 

Have a great time on your boat & on the water - but do so safely!

Boating
Ontario