



DO YOU HAVE A DIAGNOSED DISABILITY & ARE LOOKING FOR EMPLOYMENT?

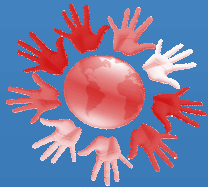
THE YMCA IS OPENING IT'S DOORS WITH THE ACCESS TO EMPLOYMENT PROGRAM



THE ACCESS TO EMPLOYMENT PROGRAM IS DESIGNED TO PROVIDE INDIVIDUALS WITH A DIAGNOSED DISABILITY WHO ARE:

- Seeking part-time or full-time employment
- At least 16 years of age
- Living in the Peel Region
- Able to prepare for, accept and maintain employment
- Legally entitled to work in Canada
- Currently an Ontario Disability Support Program client, or are able to meet all ODSP eligibility requirements

The Access to Employment Project provides the opportunity for individuals with a diagnosed disability to equip themselves with transferable skills!



Whether the individual is looking for part-time or full-time employment; the Access to Employment Program can help!

FOR MORE INFORMATION PLEASE CONTACT:

**LAURA F
(905) 276-9322 EXT 227**



Our Mission

The YMCA of Greater Toronto is a charity offering opportunities for personal growth, community involvement and leadership.

Our Vision

Our communities will be home to the healthiest children, teens and young adults.

Our Values

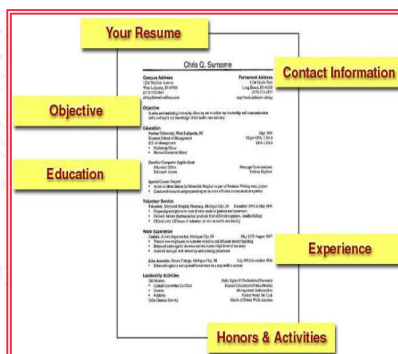
The YMCA of Greater Toronto is guided by values that inform the way we act and the decisions we make:

Caring, Health, Honesty, Inclusiveness, Respect &

Responsibility.

Building healthy communities

ACCESS TO EMPLOYMENT OFFERS ASSISTANCE WITH:



Cover Letter & Resume Assistance



Job Searching & Job Matching Assistance



Interview Skills & Preparation

YMCA PEEL EMPLOYMENT & COMMUNITY

151 CITY CENTRE DRIVE, SUITE #800

MISSISSAUGA, ON, L5B 1M7

PHONE: (905) 276-9322 FAX: (905) 276-9327



Ontario

MINISTRY OF COMMUNITY AND SOCIAL SERVICES