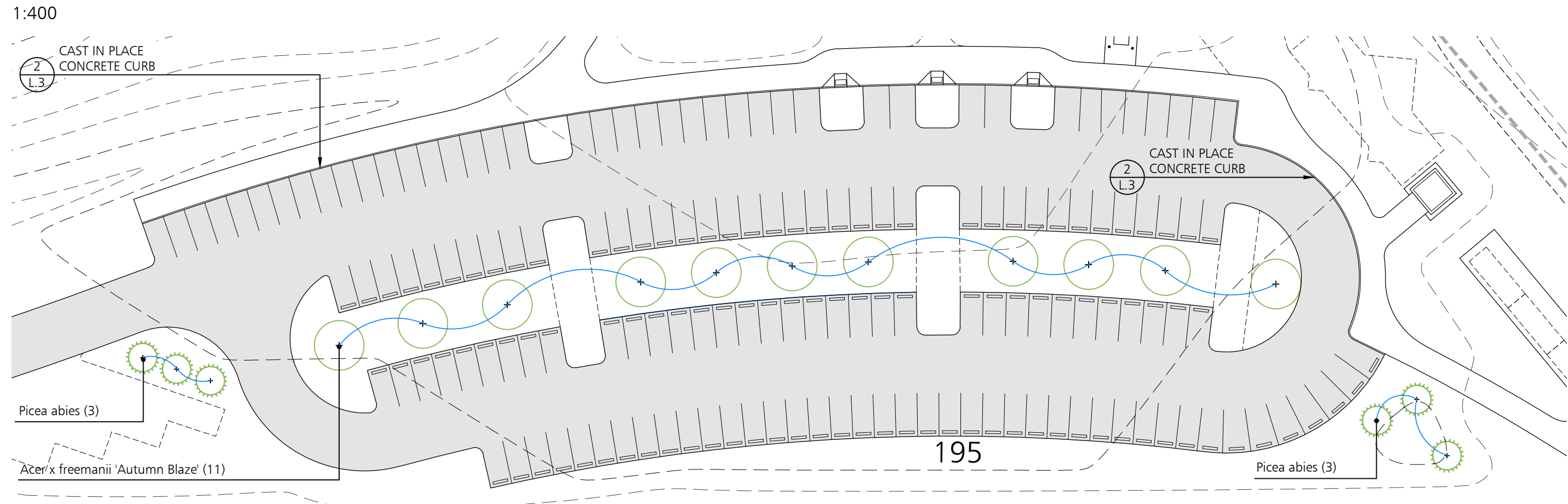
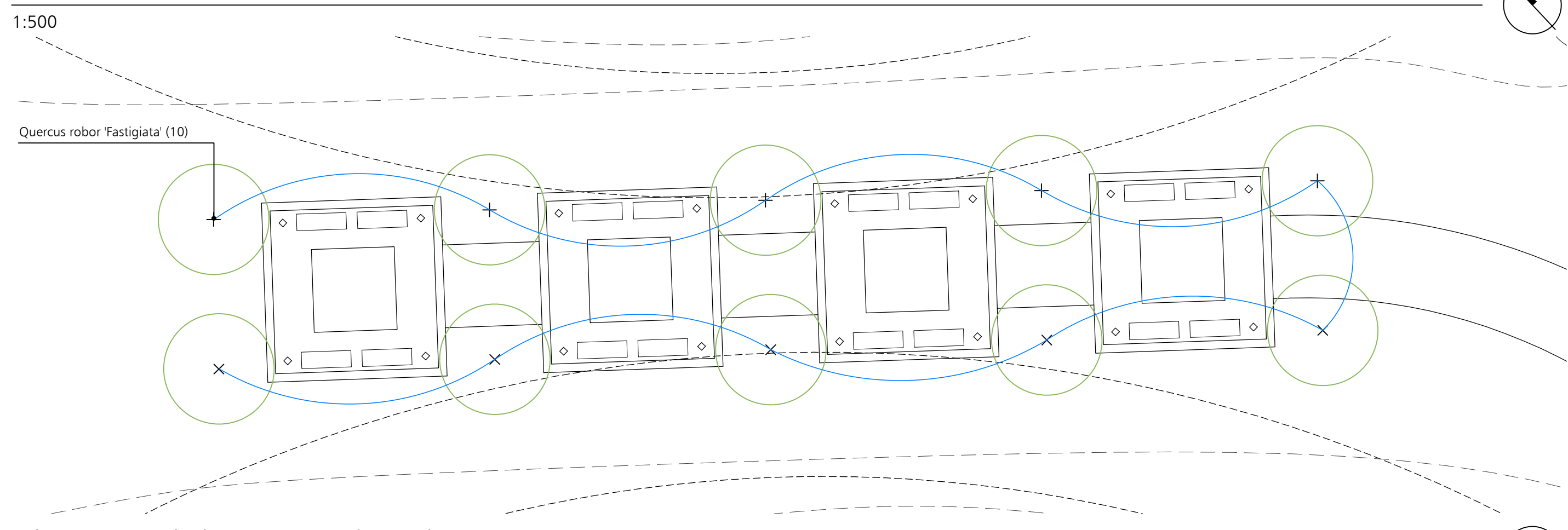


Enlargement B - Main Entrance Landscape Plan (6525 Danville Rd.)



Enlargement C - Parking Lot Landscape Plan



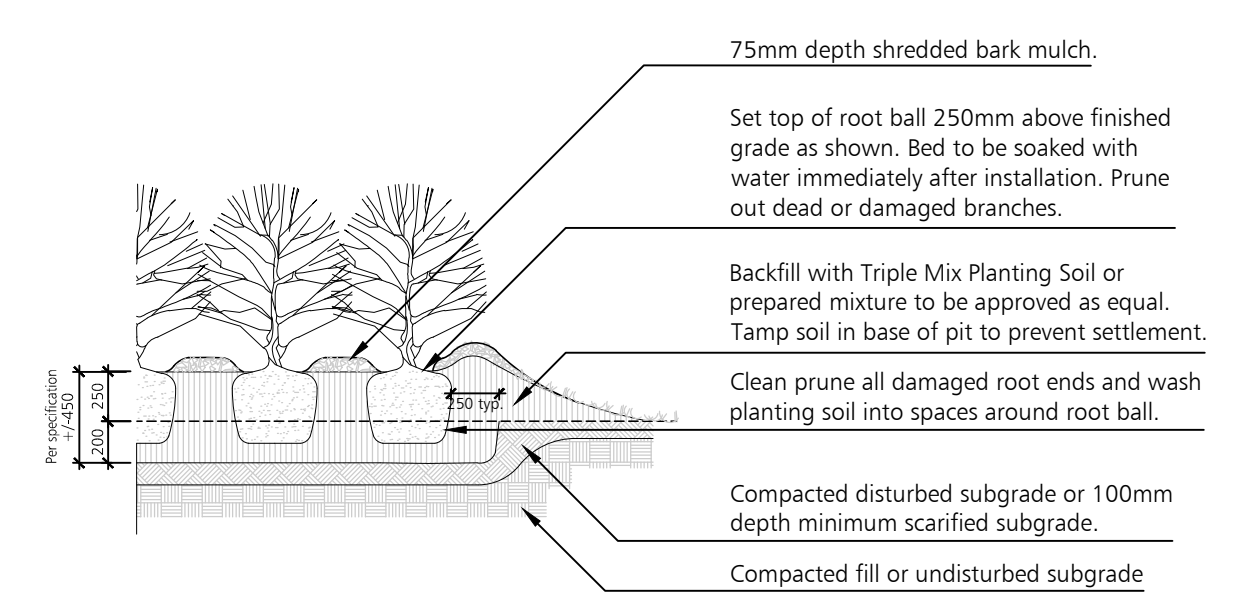
Enlargement D - Shade Structures Landscape Plan

PLANT LIST

| BOTANICAL NAME | COMMON NAME | QUANTITY | CALIPER | HEIGHT/SPREAD | CONDITION |
|--------------------------------------|-------------------------|----------|---------|---------------|------------|
| TREES | | | | | |
| Acer saccharum 'Legacy' | Legacy Sugar Maple | 6 | 70mm | | WB or B&B |
| Acer x freemanii 'Autumn Blaze' | Autumn Blaze Maple | 17 | 70mm | | WB or B&B |
| Crataegus laevigata 'Paul's Scarlet' | Paul's Scarlet Hawthorn | 6 | 50mm | | WB or B&B |
| Quercus robur 'Fastigiata' | Pyramidal English Oak | 10 | 70mm | | WB or B&B |
| Picea abies | Norway Spruce | 11 | | 2100mm HT. | WB or B&B |
| Picea pungens | Colorado Spruce | 9 | | 2100mm HT. | WB or B&B |
| Thuja occidentalis | Eastern White Cedar | 30 | | 2100mm HT. | WB or B&B |
| SHRUBS | | | | | |
| Cornus alba 'Elegantissima' | Silver Edge Dogwood | 6 | | 600mm HT. | 3 Gal. Pot |
| Cornus alba 'Gouchaultii' | Golden Leaf Dogwood | 6 | | 600mm HT. | 3 Gal. Pot |
| Cornus sericea | Red Osier Dogwood | 6 | | 600mm HT. | 3 Gal. Pot |
| ORNAMENTAL GRASSES | | | | | |
| Miscanthus sinensis 'Adagio' | Adagio Maiden Grass | 54 | | | 1 Gal. Pot |

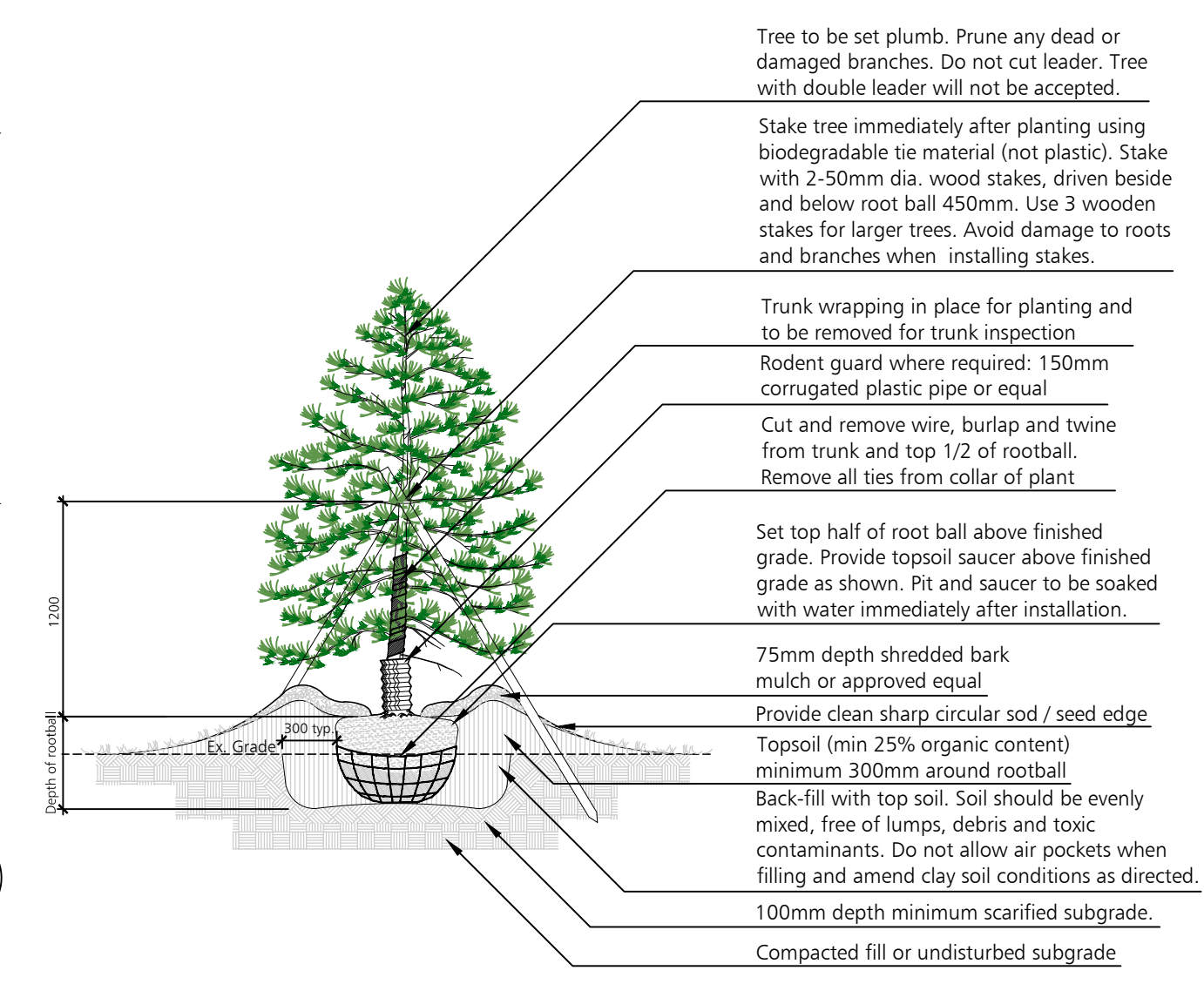
- NOTES:**
- Plant material to conform to the Canadian Nursery Trades association metric Guide Specifications for Nursery Stock, latest edition.
 - Contractor to verify quantities listed: plant quantities to be supplied as shown in plan in case of discrepancies between plan and quantities listed.
 - All plant material to be sourced from nurseries with an 800km radius.
 - Provide two year warranty for all plant material.

- Planting Specifications**
- Coordinate shipping of plants and excavation of holes to ensure minimum time lapse between digging and planting.
 - Tie branches of tree and shrubs securely and protect plant material against abrasion, exposure, and extreme temperature during transit. Avoid binding of planting stock with rope or wire which would damage bark, break branches or destroy natural shape of plant. Give full support to root ball of large trees during lifting.
 - Cover plant foliage with tarpaulin and protect bare roots by means to prevent loss of moisture during transit and storage.
 - Provide two year warranty for plant material as itemized on plant list. At end of warranty inspection, all plant material will be in vigorous growing condition, free of pests and disease and true to natural form.
 - During warranty period, remove from site any plant material that has died or failed to grow satisfactorily as determined by owner/architect/landscape architect. Extend warranty on replacement plant material for a period equal to the length of original warranty period. Remove trunk wrapping, tree stakes and guy wired at the end of the warranty period. Upon request, remove trunk wrapping for visual inspection and rewrap.
 - Plant material: comply with metric guide - specification for nursery stock, 1984 edition of Canadian Nursery Trades Association referring to size and development of plant material and root ball. Measure plants when branches are in their natural position. Height and spread dimensions refer to main body of plant and not from branch tip to branch tip. Use trees and shrubs of no. 1 grade.
 - Stake out all tree locations and planting beds and obtain approval from architect/landscape architect/owner before excavation. The location of trees and planting areas where shown on drawings is approximate only and may require adjustment due to site conditions or as directed by the consultant.
 - Plant only under conditions that are conducive to health and physical conditions of plants.
 - Provide planting schedule, extending planting operations over a long period. Using limited crew will not be accepted.
 - Excavate planting pits and beds to depth indicated on details. Fill with a planting mixture of one part peat moss, six parts topsoil with commercial bonemeal for planting holes in heavy soils if natural drainage does not exist. Have method approved.
 - Immediately following any planting operations, remove all debris and excess material from site, leaving the site neat and tidy.
 - It is the contractor's responsibility to maintain plant material for 30 days following planting or until time of final acceptance. Maintenance of plant material during warranty period is the owner's responsibility.
 - Maintenance tasks until time of final acceptance to include all of the following:
 1. Watering
 2. Fertilizing
 3. Weed Control
 4. Insect and Fungus Control
 5. Pruning
 - Submit separate maintenance cost for consideration by owner during warranty period only. Refer to maintenance specifications.



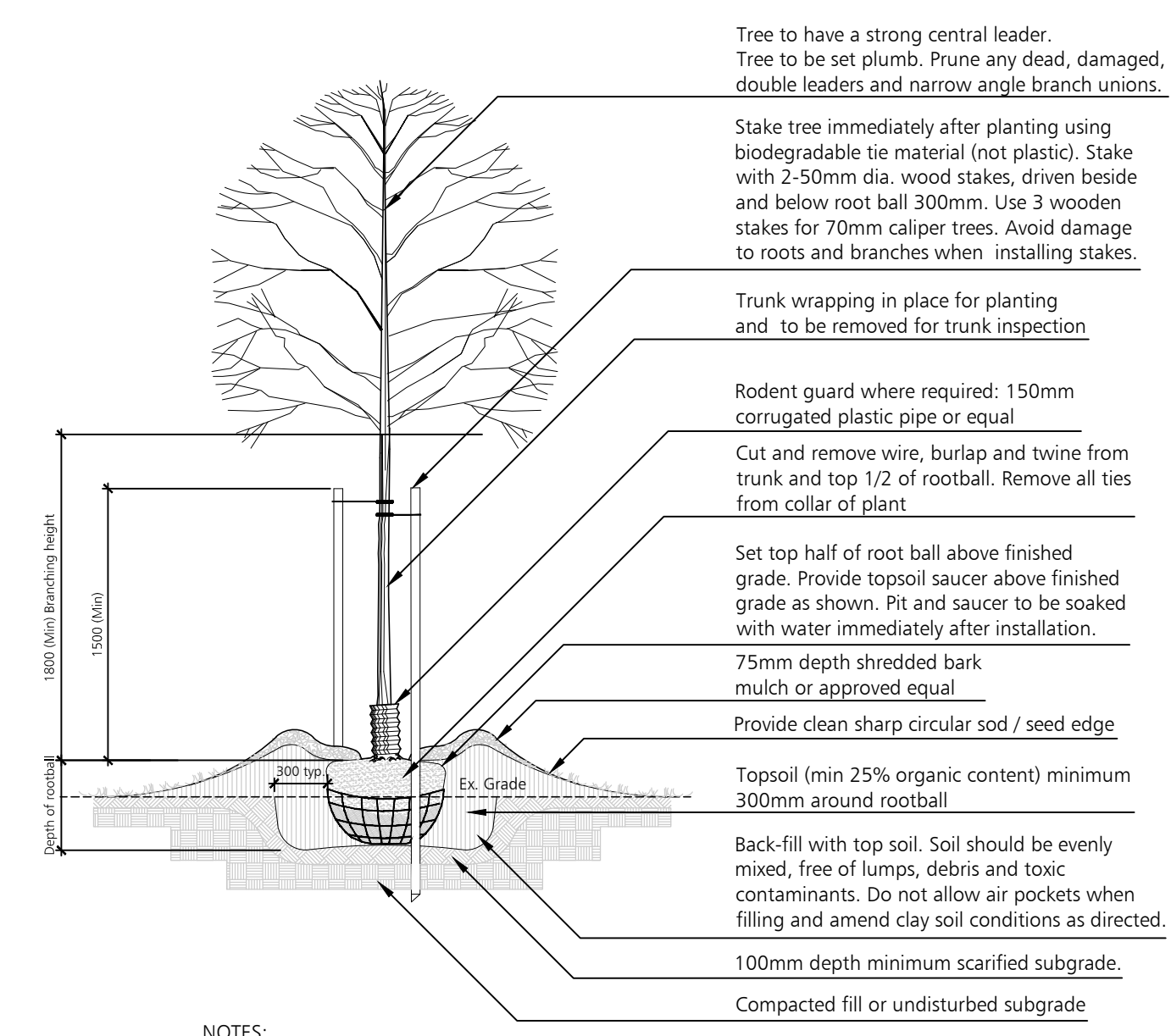
- NOTES:**
- Remove container and maintain soil ball intact. Container to be cut carefully away from root system so as not disturb soil ball.

Shrubs



- NOTES:**
- No tree pits shall be left open over night.
 - Sides surfaces of all tree pits to be scarified.
 - Trees to be planted by hand or backhoe. No tree spades or auguring permitted.
 - Remove stakes at close of second growing season or upon expiry of warranty period.

Coniferous Tree



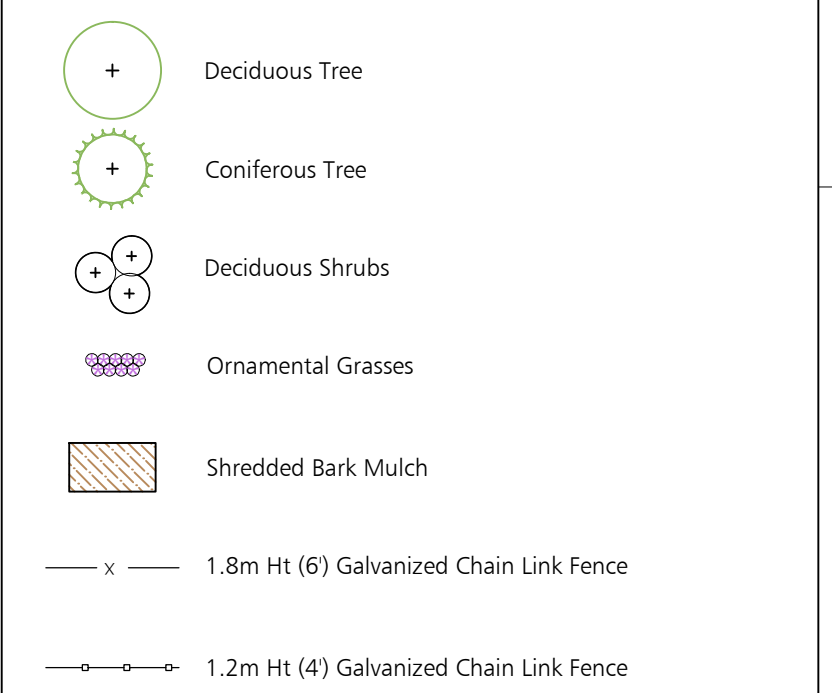
- NOTES:**
- No tree pits shall be left open over night.
 - Sides surfaces of all tree pits to be scarified.
 - Trees to be planted by hand or backhoe. No tree spades or auguring permitted.
 - Remove stakes at close of second growing season or upon expiry of warranty period.

Deciduous Tree

PLANTING DETAILS

N.T.S.

Planting Legend



Note: All Drawings by Baker Turner inc. to be Printed in Colour.

REVISIONS

| DATE | DESCRIPTION |
|------------|-----------------------|
| Aug 25, 15 | Issued for Tender |
| Aug 20, 15 | Issued for Review |
| May 26, 15 | Issued for Discussion |

NOTE: Contractor is to check and verify all dimensions and conditions on the project, and is to immediately report any discrepancies to the landscape architect before proceeding with the work.



Suite 300
8501 Mississauga Road
Brampton Ontario L6Y 5G8
Tel: (905) 453-9398
Fax: (905) 453-9376
email: tba@bakerturner.com

Project Title
City of Mississauga
Park 302 - Phase 1b
6525 and 6275 Danville Road
Mississauga, ON
Landscape Plan and Details

| Date | Issued |
|---------------|-------------|
| December 2014 | |
| Job Number | Drawn By |
| BTI-1136 | MT |
| Scale | Checked By |
| As Shown | TB |
| Sheet Number | File Number |
| L.2 of 6 | |