



Port Credit Harbour West Parks (PCHWP) Preliminary Design & Development Plan

Welcome to the Public Open House

May 30, 2017

Agenda

1. Introductions & Meeting Purpose (5 min)
2. Project Background Overview (5 min)
 - Work completed to date
 - Project timing
3. Current Phase of Work (20 min)
 - Preliminary Design & Development Plan Options
 - Next steps
4. Questions from Participants (15 min)
5. Feedback Session (45 min)

Project Team

- City of Mississauga
(Jill Goldie, Jane Darragh, Randy Jamieson, Lindsay McCain)
- Dillon Consulting Limited
(Ian Dance, Karla Kolli, Mark Hillmer)
- Shoreplan Engineering (Milo Sturm)
- GeoProcess Research Associates
- MJS Consultants Inc.

Meeting Purpose

- Update you on the status of the PCHWP project
- Get your feedback on the 3 concept options being considered

Meeting Participant Photos

- Please be aware that photos of meeting participants will be taken by the City of Mississauga Staff and Consultants for use in future project or City related publications and/or documentation.
- Should you have any concerns or do not wish to be photographed please advise City staff.
- Thank you



Project Background Overview

Port Credit Harbour West Parks (PCHWP)

Preliminary Design & Development Plan



SHOREPLAN



Vision

The City's vision for Port Credit Harbour West Parks is to develop a vibrant waterfront destination that **integrates programmable and flexible multi-use civic spaces, continuous water's edge promenade, open green spaces** and facilities that support **waterfront recreational uses** with the **natural and cultural heritage features** of the project area.

Policy Context

- Old Port Credit Village Heritage Conservation District Plan – *Update Currently Underway*
- Mississauga Waterfront Parks Strategy
- Mississauga Official Plan
- Port Credit Local Area Plan
- Lake Ontario Integrated Shoreline Strategy (CVC)

PORT CREDIT HARBOUR WEST PARKS

PRELIMINARY DESIGN + DEVELOPMENT PLAN

PCHWP Environmental Study Report (2013)

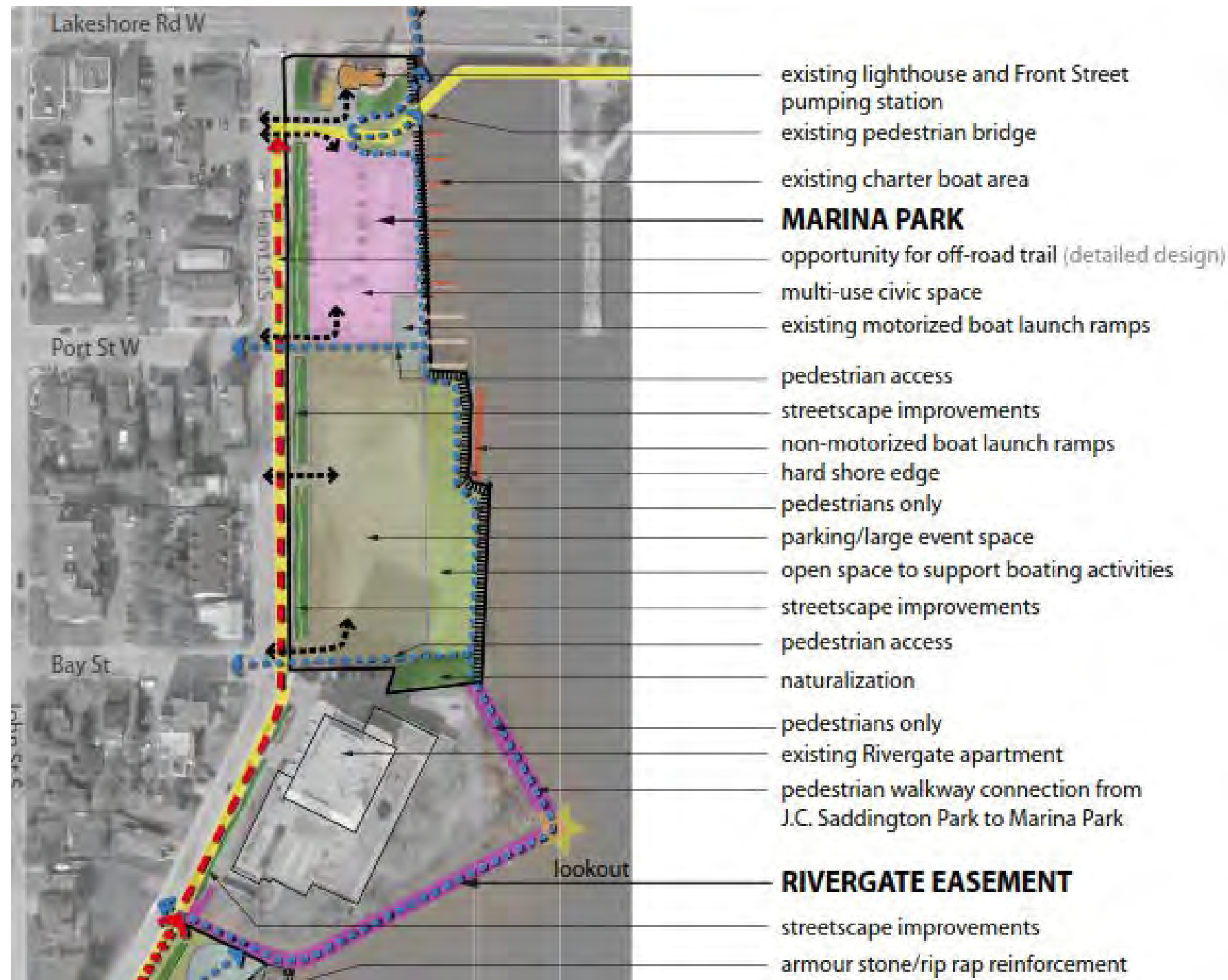


PORT CREDIT HARBOUR WEST PARKS
LARGE BLOCK CONCEPT PLAN
JULY 2013

PORT CREDIT MEMORIAL PARK (WEST)

- existing canoe club
- existing launch ramp and docks
- existing rowing club
- existing launch ramp and docks
- street tree planting
- street tree planting
- trail (3.0m wide)
- open green space
- hard shore edge
- natural shore edge
- parking area
- multi-use civic space
- underpass connection between Port Credit Memorial Park (West) and Marina Park

PCHWP Environmental Study Report (2013)



Purpose of Project

- Refine the Class EA Large Block Concept Plan into development plan with detailed costing, for:
 - Port Credit Memorial Park West
 - Lakeshore Road bridge underpass
 - Marina Park
 - Rivergate easement

**J.C. Saddington Park is excluded from scope of the current phase due to budget*

Project Timing

Overall Implementation Timing

- **2017** Preliminary Design and Development Plan
- **2018/2020** Detailed Design, Agency Consultation and Approvals
- **2021/2022** Construction – *subject to budget approval, phasing and outcome of the Region's Front Street Station Class EA.*



Current Phase

Port Credit Harbour West Parks (PCHWP)

Preliminary Design & Development Plan



SHOREPLAN



Preliminary Design & Development Plan

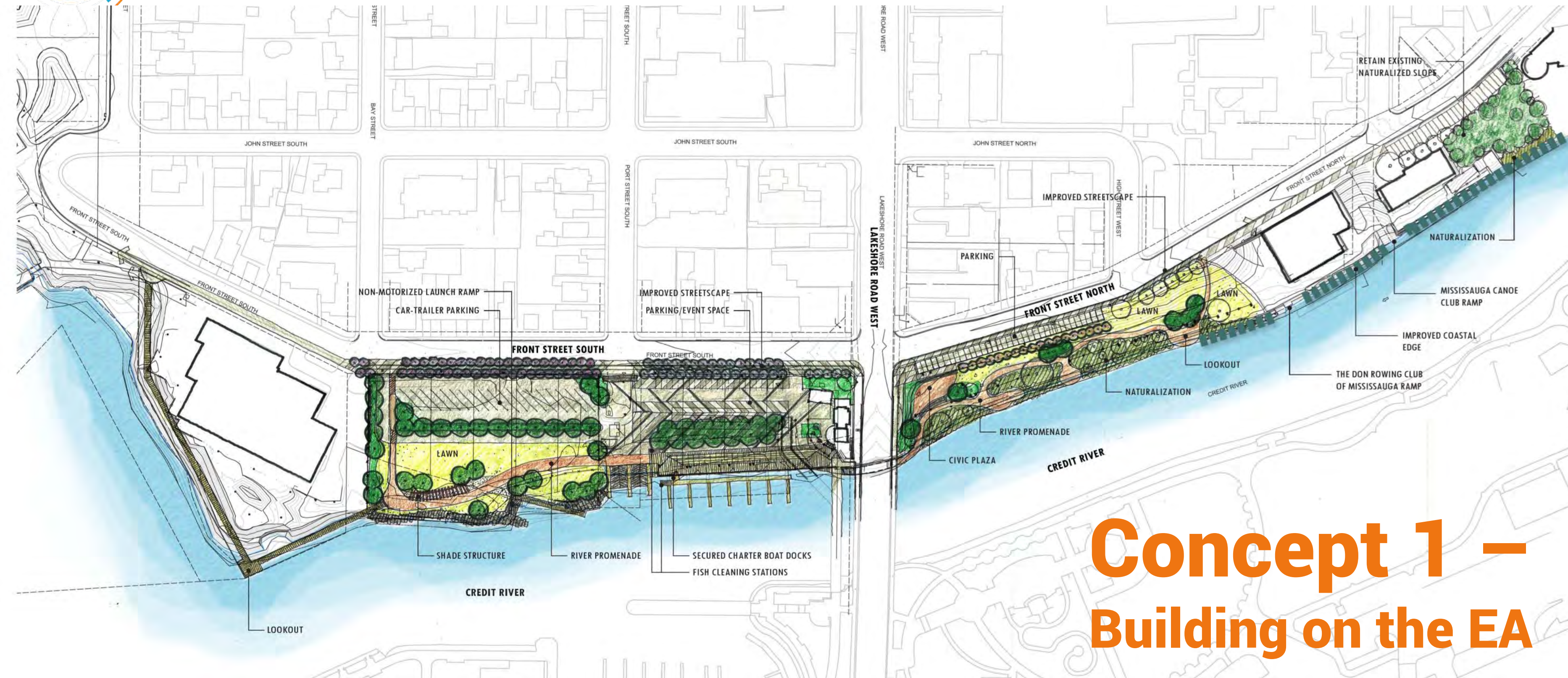
This phase of work will include:

- Pre-engineering investigations and site analysis;
- Site servicing update and investigations;
- Program refinement;
- Stakeholder and public consultation;
- Preliminary park design options;
- Final development plan; and
- Refined costing.

PORT CREDIT HARBOUR WEST PARKS

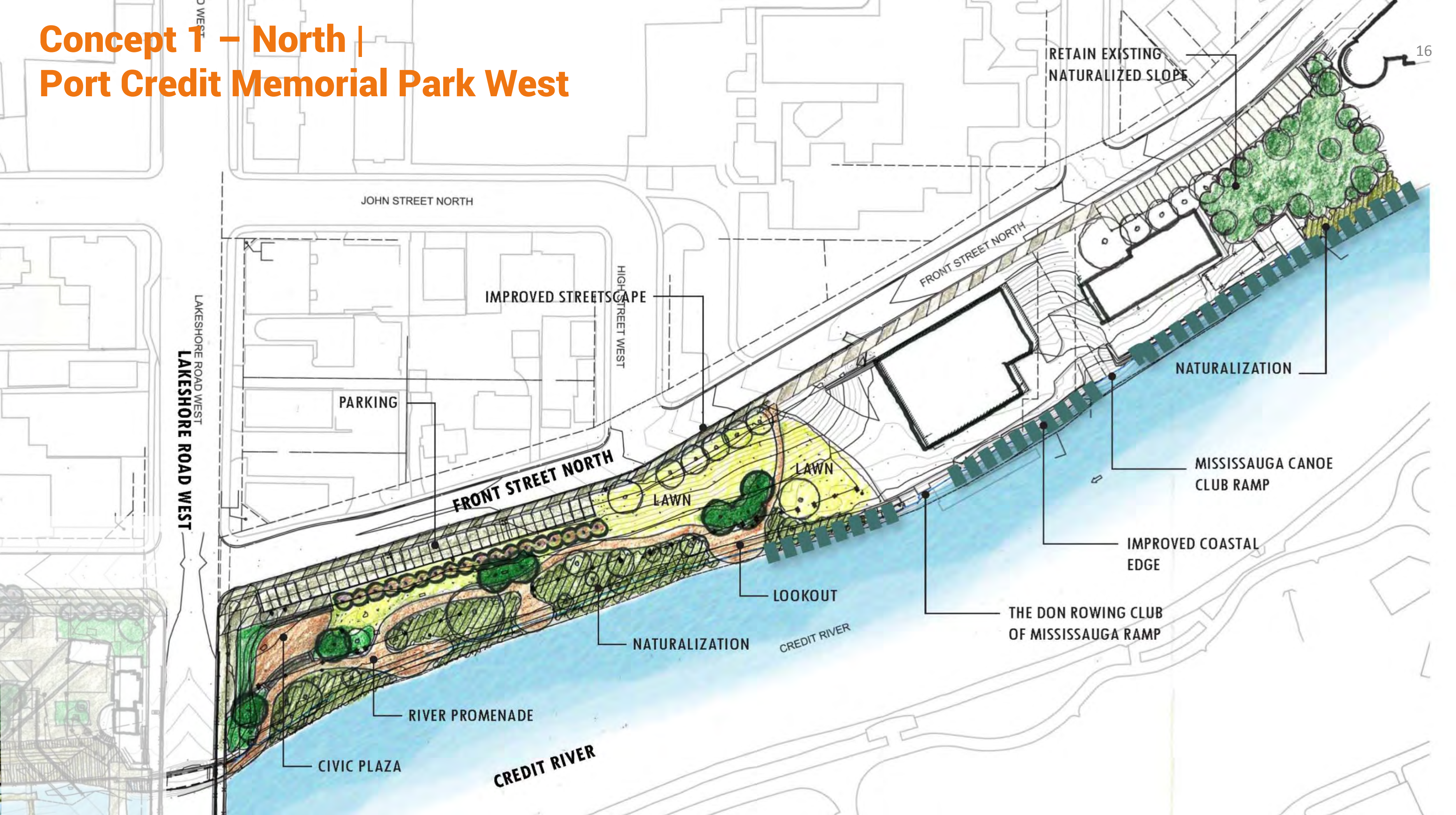
15

PRELIMINARY DESIGN + DEVELOPMENT PLAN

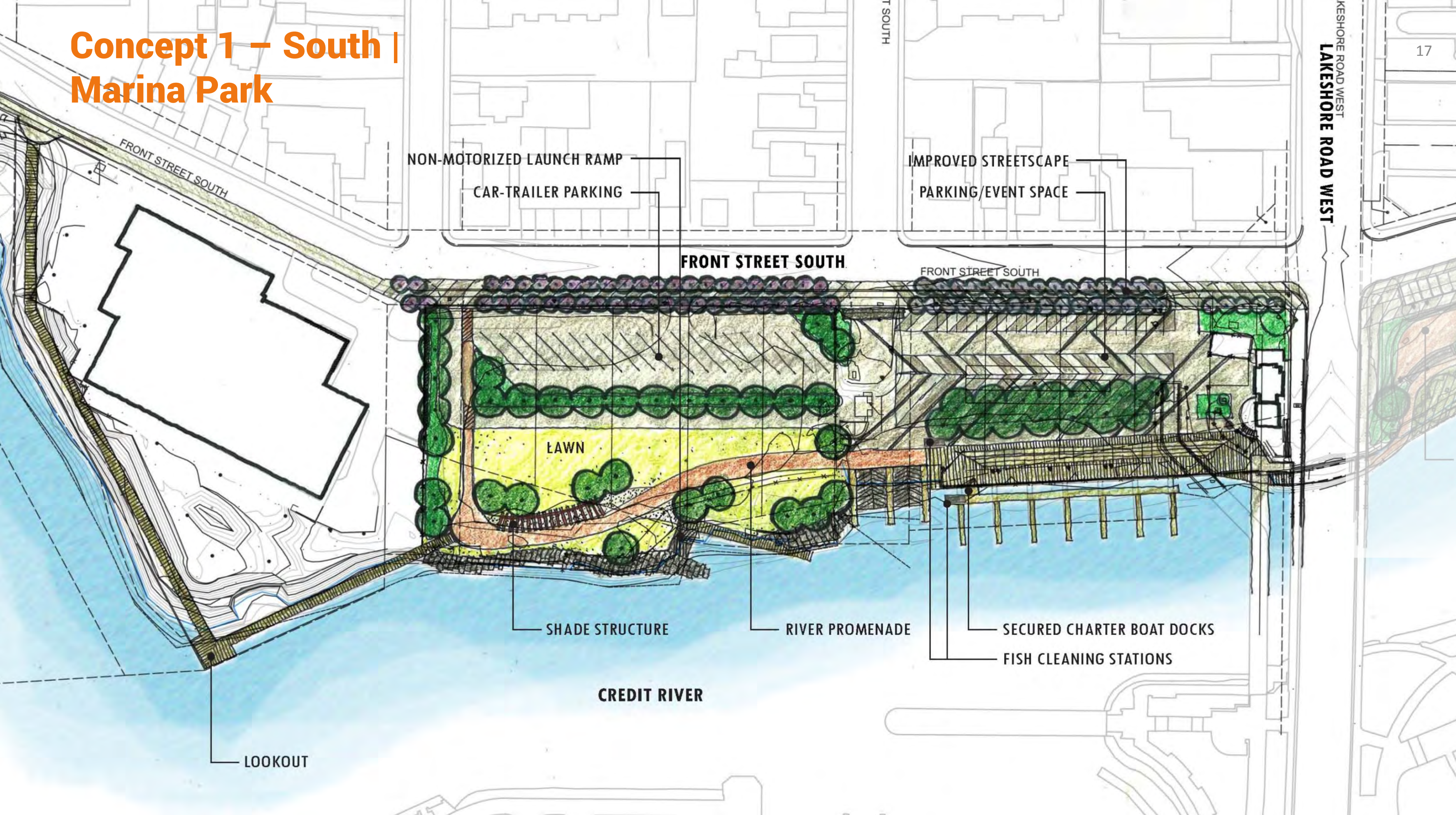


**Concept 1 –
Building on the EA**

Concept 1 – North | Port Credit Memorial Park West



Concept 1 – South | Marina Park



NON-MOTORIZED LAUNCH RAMP

CAR-TRAILER PARKING

IMPROVED STREETScape

PARKING/EVENT SPACE

FRONT STREET SOUTH

FRONT STREET SOUTH

LAWN

SHADE STRUCTURE

RIVER PROMENADE

SECURED CHARTER BOAT DOCKS

FISH CLEANING STATIONS

CREDIT RIVER

LOOKOUT

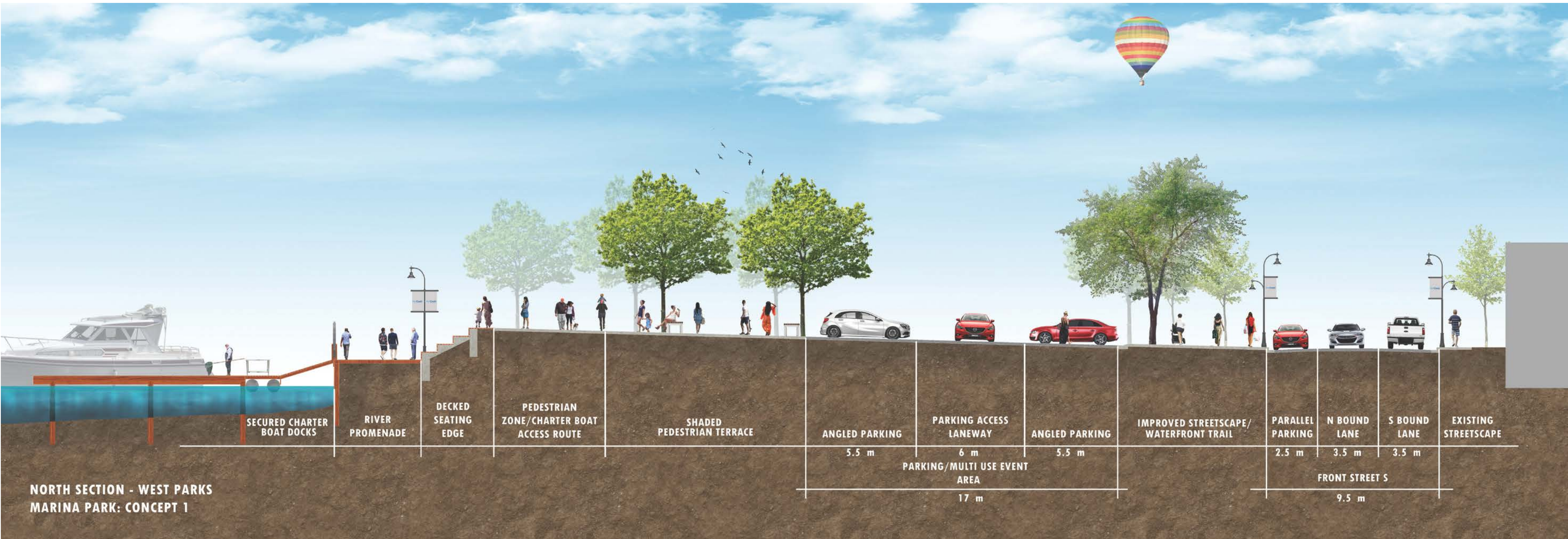
LAKESHORE ROAD WEST

PORT CREDIT HARBOUR WEST PARKS

18

PRELIMINARY DESIGN + DEVELOPMENT PLAN

Concept 1 – Marina Park North Section



Concept 1
South



PORT CREDIT HARBOUR WEST PARKS

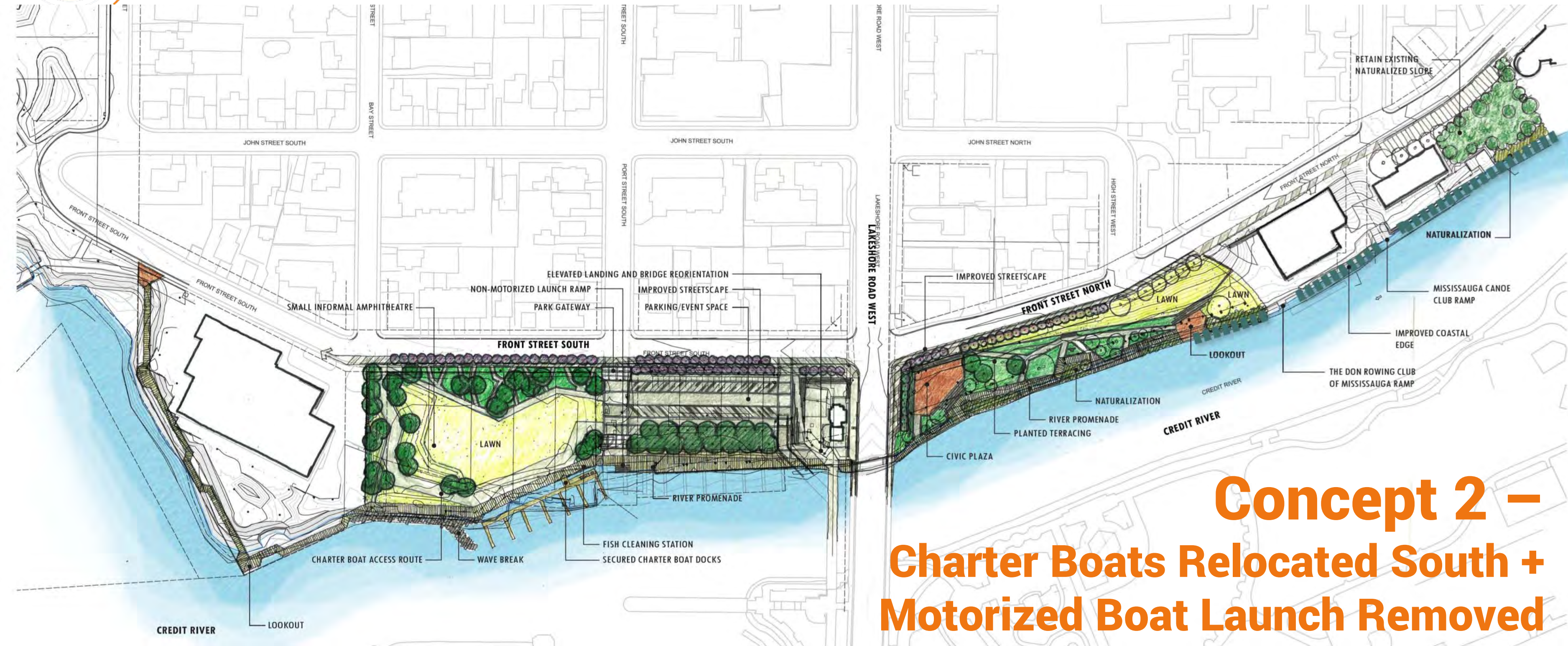
PRELIMINARY DESIGN + DEVELOPMENT PLAN

Concept 1 – Circulation

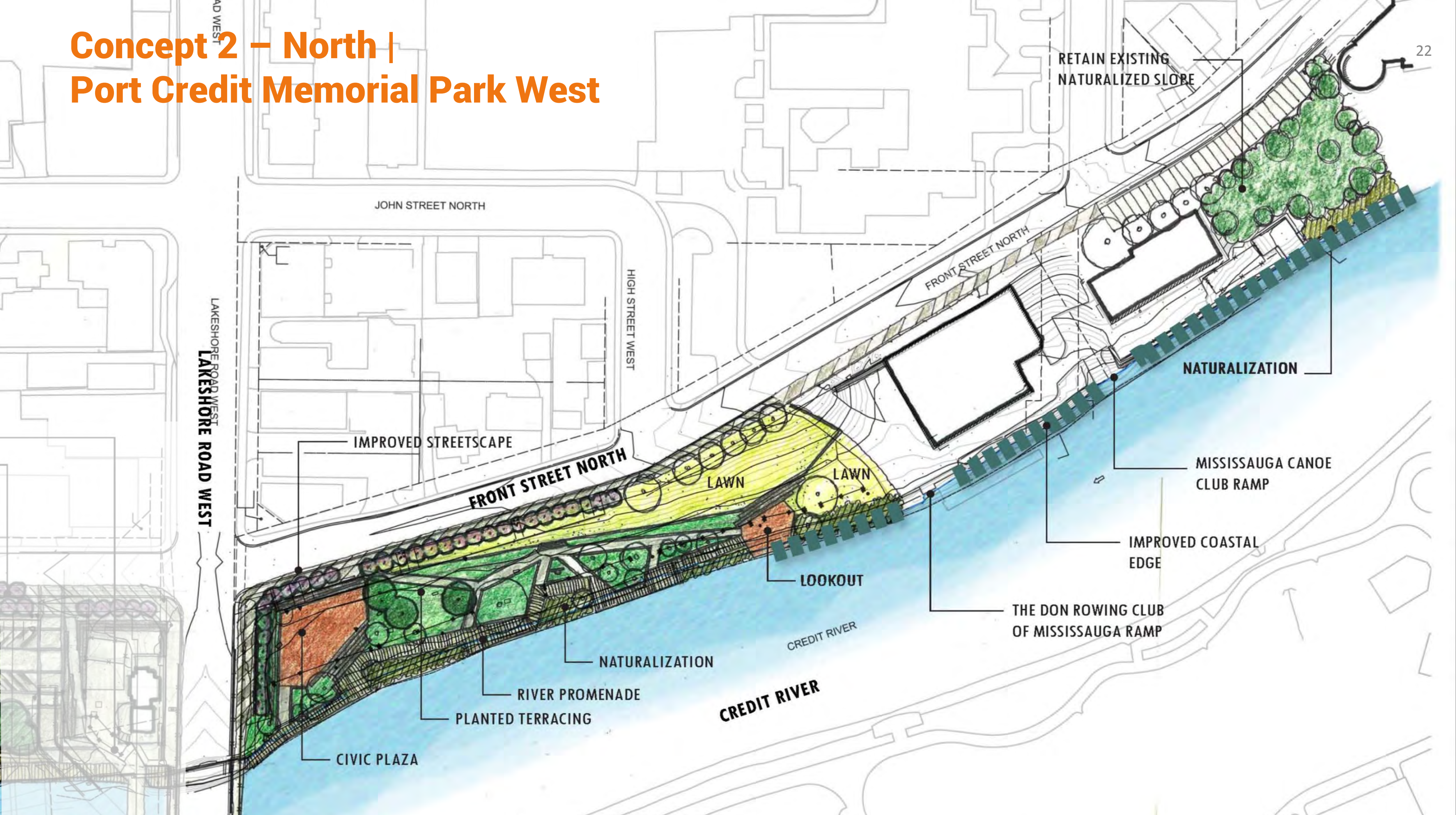


PORT CREDIT HARBOUR WEST PARKS

PRELIMINARY DESIGN + DEVELOPMENT PLAN



Concept 2 – North |
Port Credit Memorial Park West

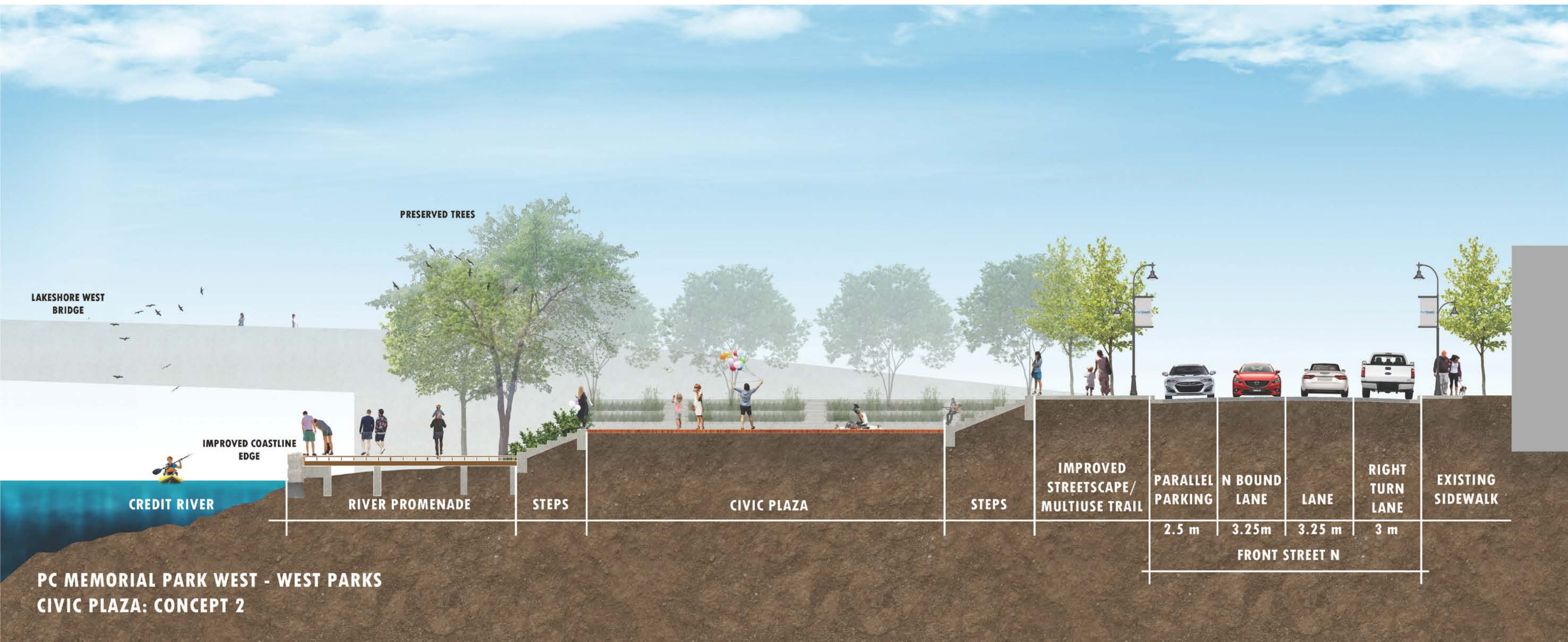


PORT CREDIT HARBOUR WEST PARKS



PRELIMINARY DESIGN + DEVELOPMENT PLAN

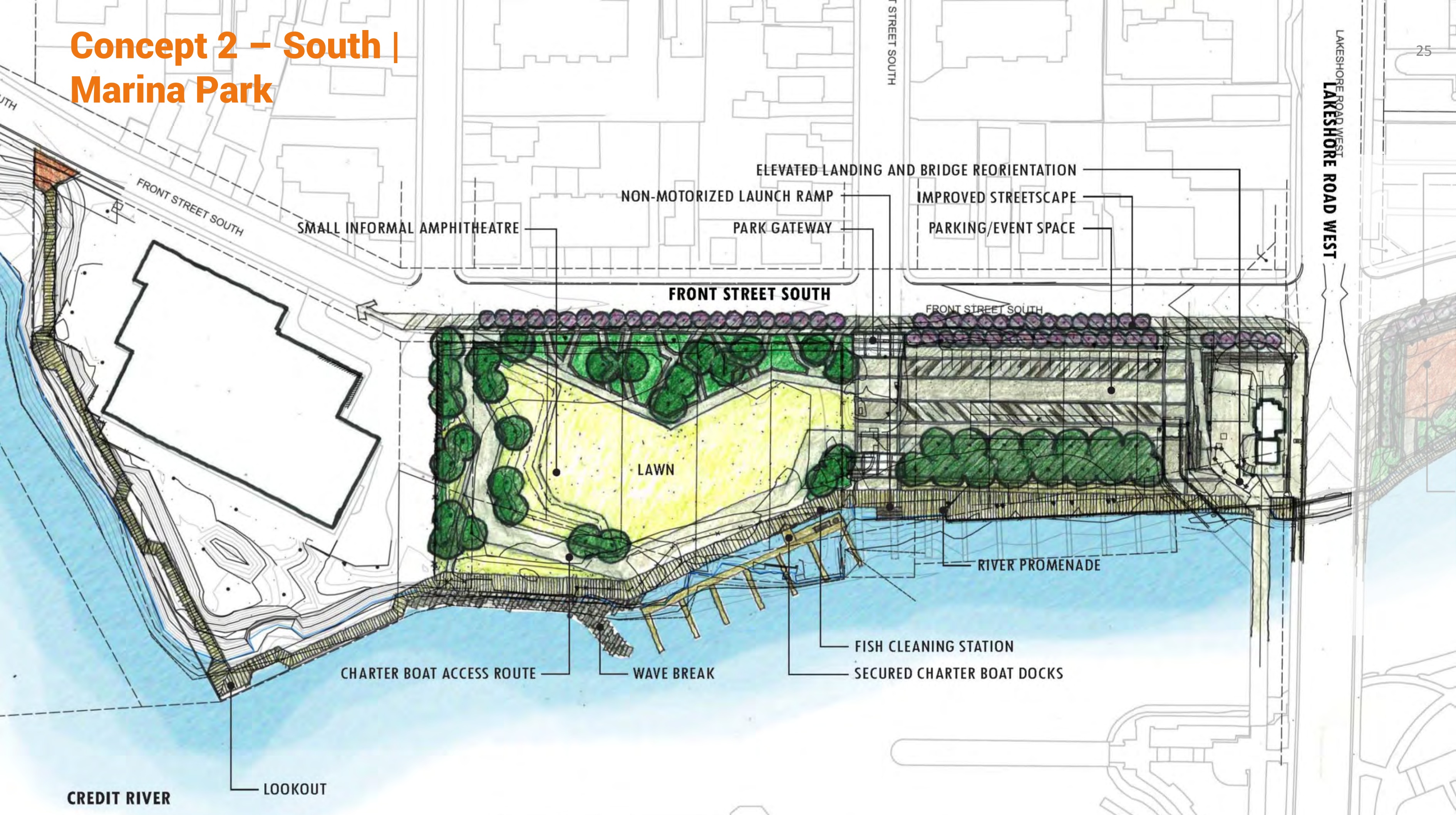
Concept 2 – PC Memorial Park West Civic Plaza Section



**Concept 2
North**



Concept 2 – South | Marina Park



PORT CREDIT HARBOUR WEST PARKS

PRELIMINARY DESIGN + DEVELOPMENT PLAN

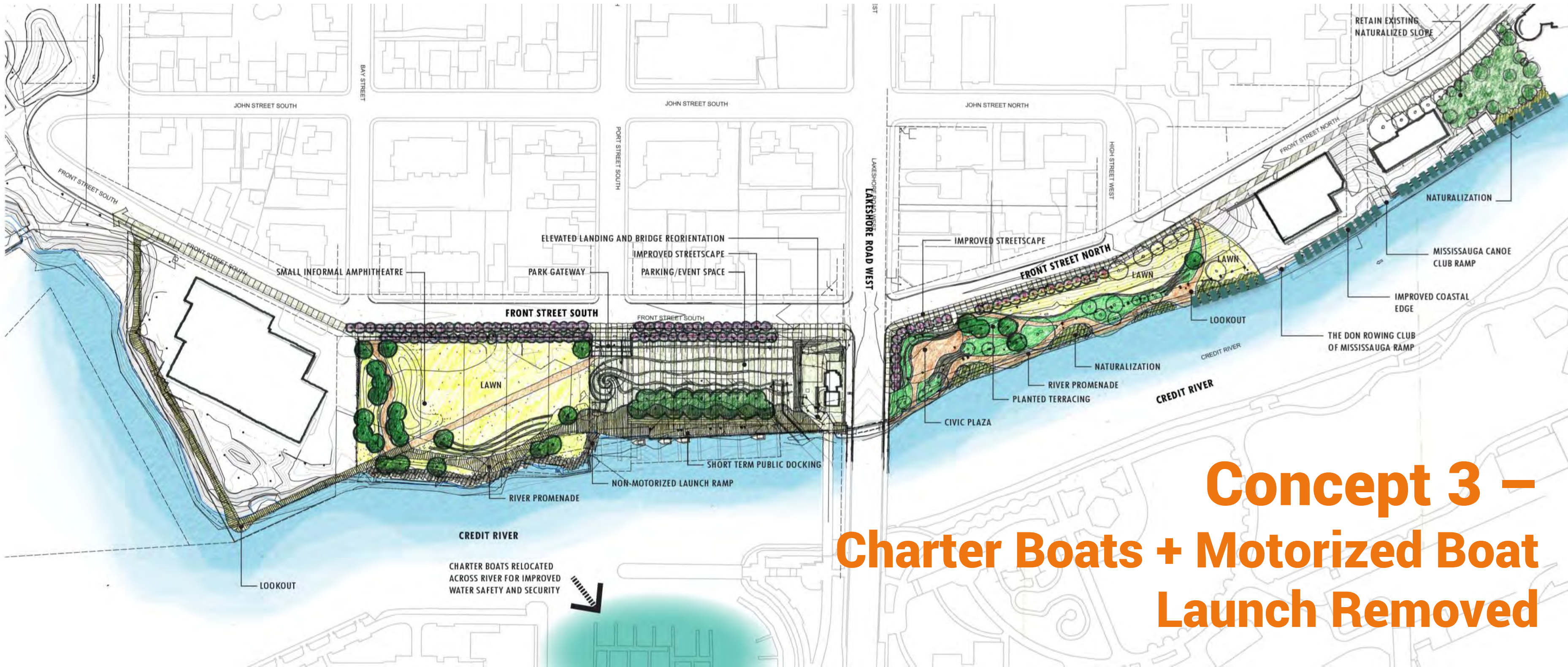
Concept 2 – Circulation



PORT CREDIT HARBOUR WEST PARKS

27

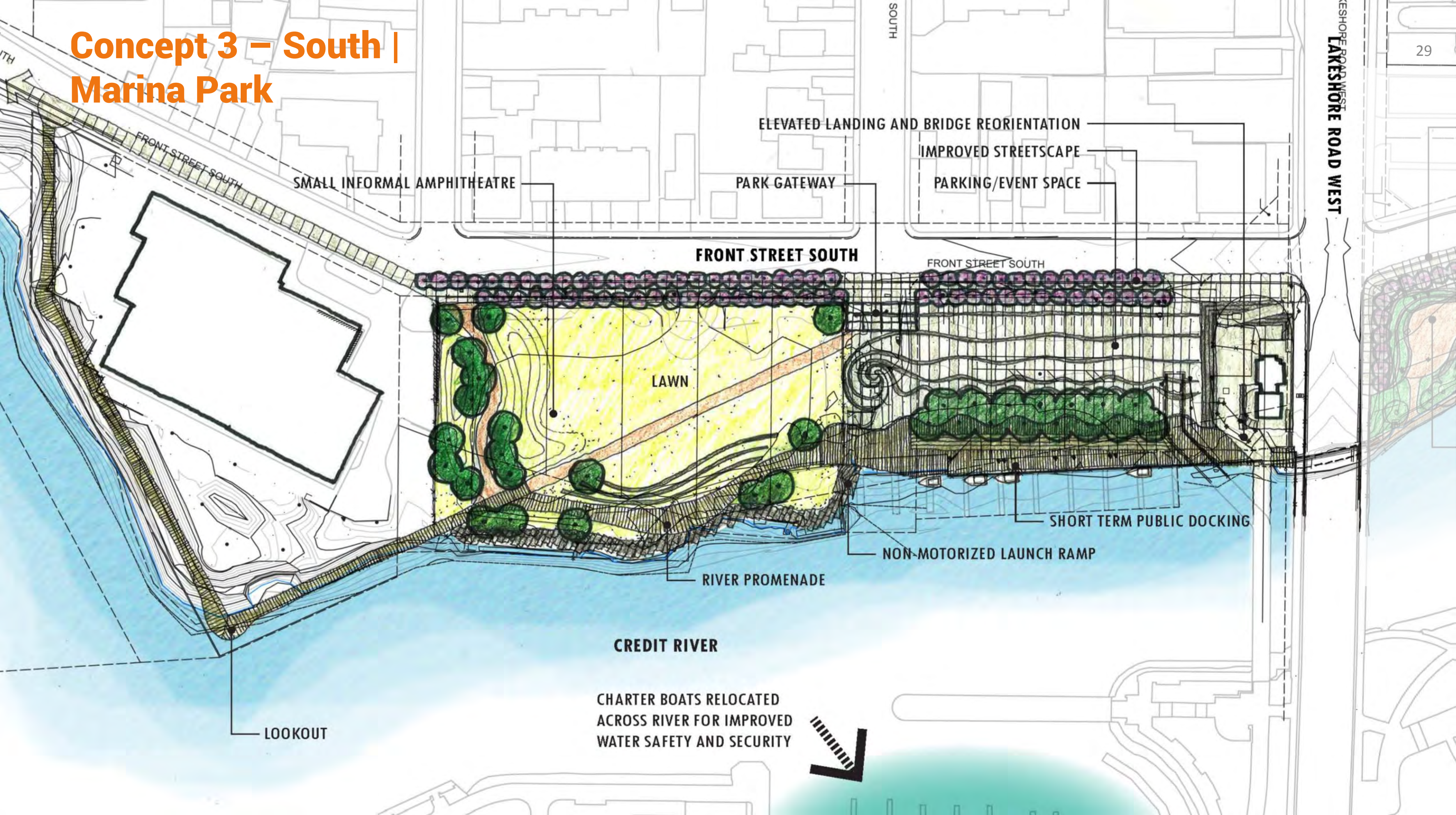
PRELIMINARY DESIGN + DEVELOPMENT PLAN



Concept 3 – North | Port Credit Memorial Park West



Concept 3 – South | Marina Park



LAKE SHORE ROAD WEST

PORT CREDIT HARBOUR WEST PARKS

PRELIMINARY DESIGN + DEVELOPMENT PLAN

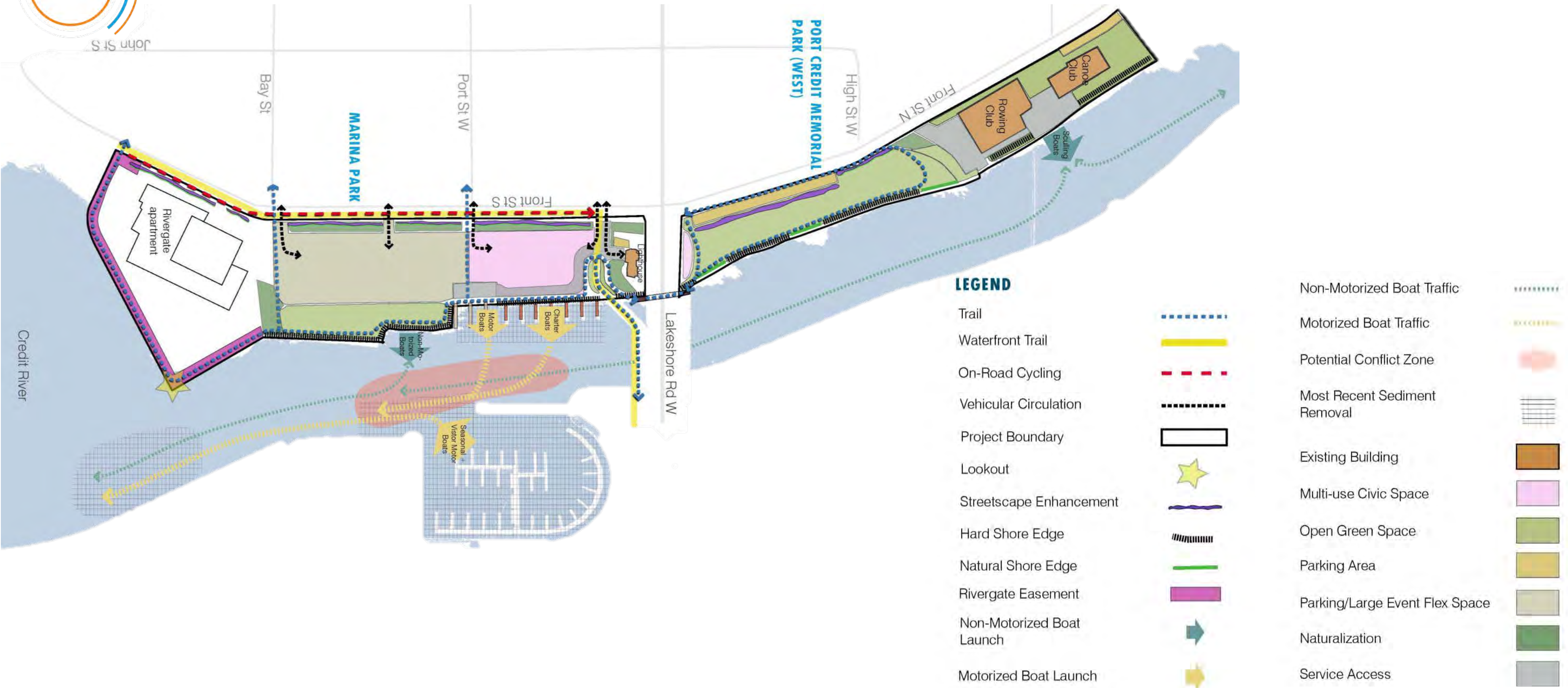
Concept 3 - Circulation



PORT CREDIT HARBOUR WEST PARKS

PRELIMINARY DESIGN + DEVELOPMENT PLAN

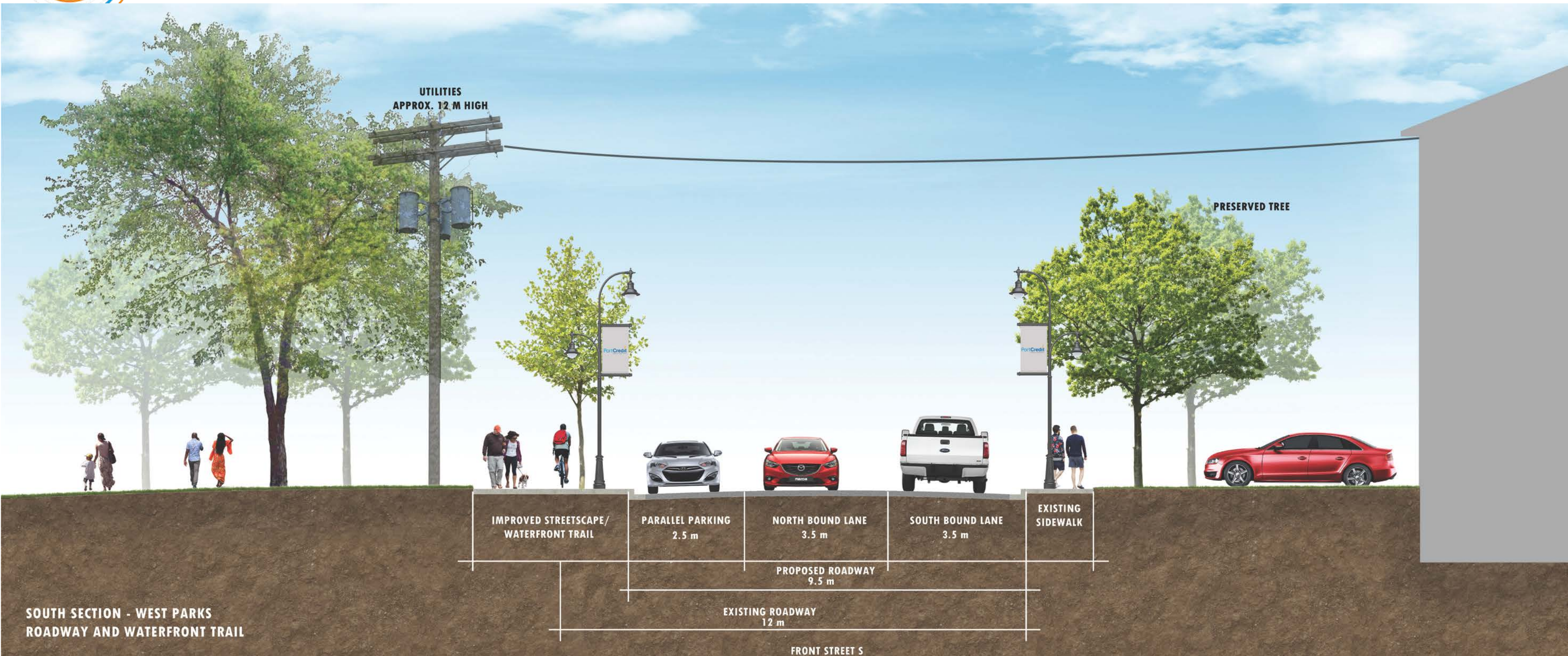
Boating Circulation Plan



PORT CREDIT HARBOUR WEST PARKS

PRELIMINARY DESIGN + DEVELOPMENT PLAN

Front Street South Cross Section



Concept 3
Front
Street –
Street View
Perspective



Next Steps

- Feedback will be consolidated and reviewed
- Project Team will use input to optimize the concepts
- One preferred concept will be prepared
- Integrate pre-engineering studies
- Integrate comments from Committees, stakeholders and approval authorities
- Final Development Plan will be posted on the City's website and displayed in both the PC Memorial Arena and PC Library in the fall of 2017
- Implementation staged over time

What do you like about the options?
What would make the options better?
What are your concerns?



Feedback Session

Port Credit Harbour West Parks (PCHWP)

Preliminary Design & Development Plan



SHOREPLAN





Thank You!

Port Credit Harbour West Parks (PCHWP)

Preliminary Design & Development Plan



SHOREPLAN

