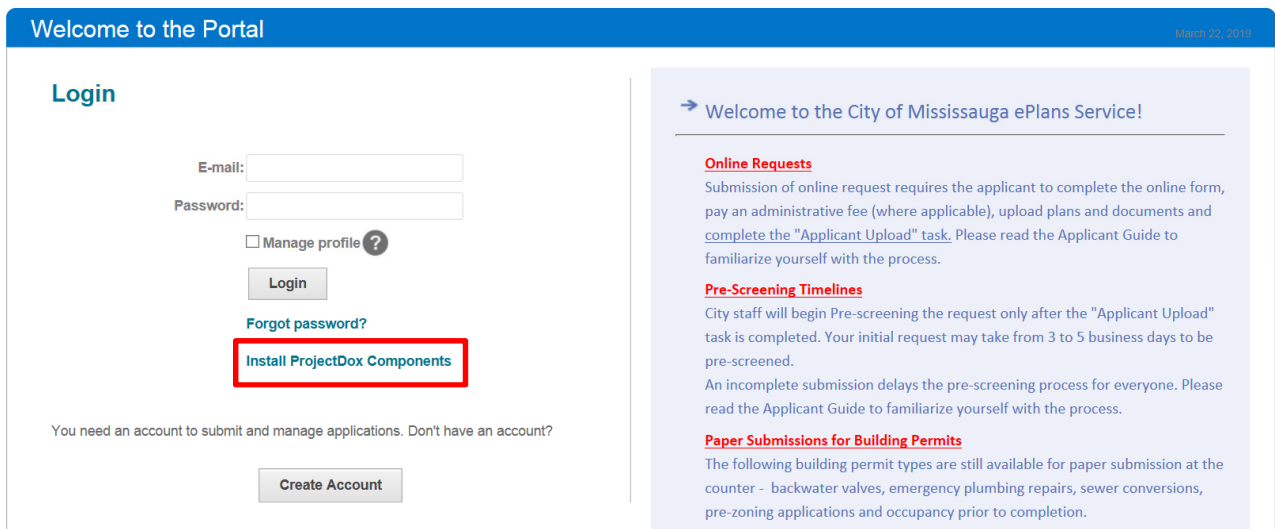


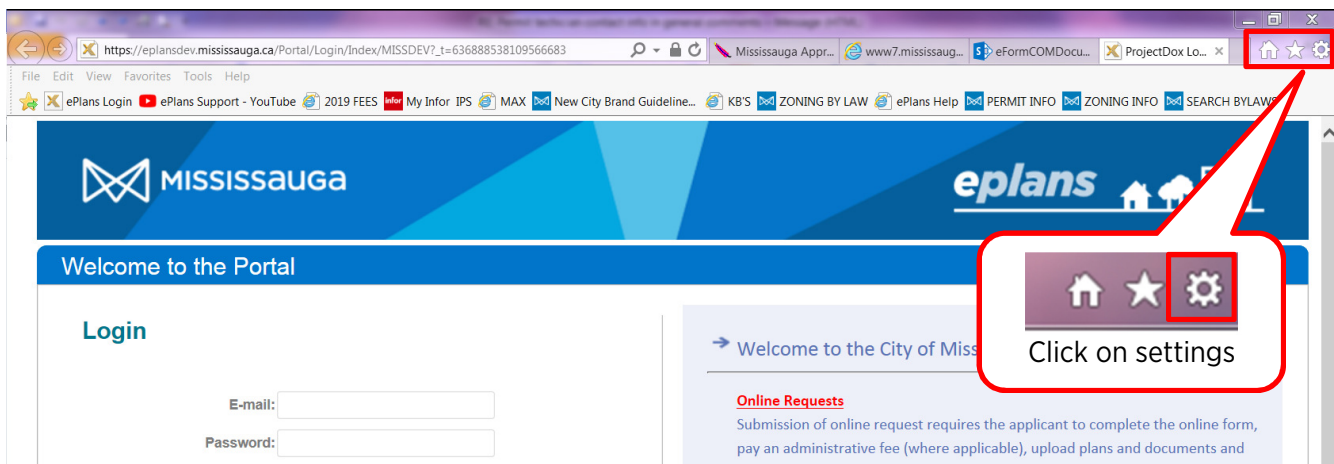
HOW TO: INSTALL PROJECTDOX COMPONENTS

In order for ePlans to function correctly, you must install ProjectDox components. This is only applicable if you are using an Internet Explorer browser. You will need to install these components on each device you plan to use.

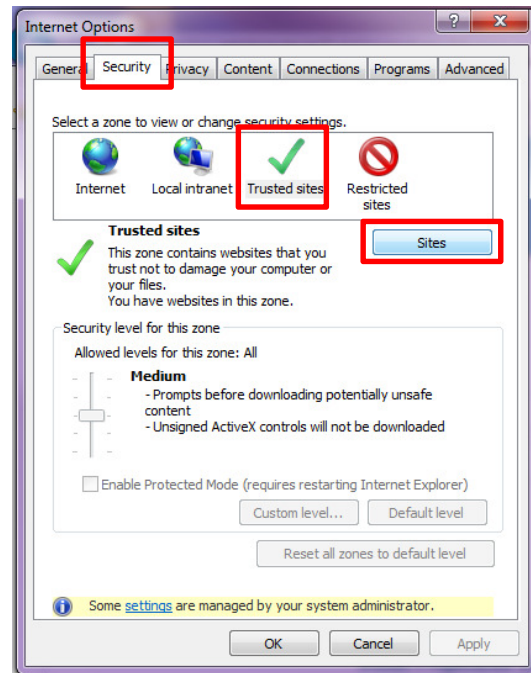
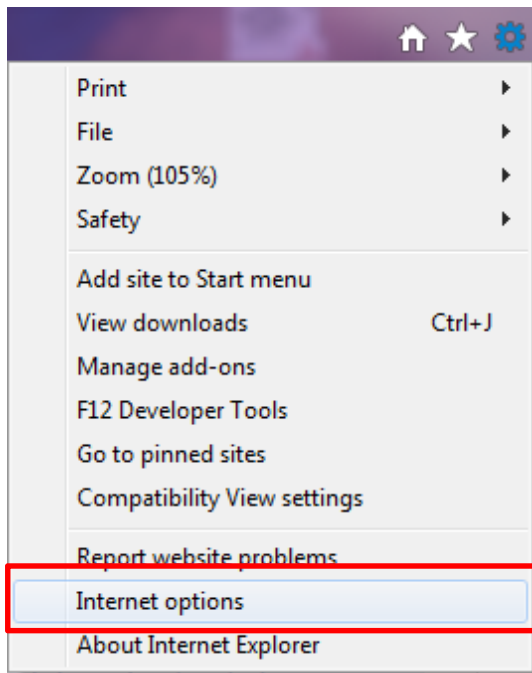
1. Visit www.mississauga.ca/eplans
2. Click on "Install ProjectDox Components" and follow the on screen prompts.



3. Add eplans.mississauga.ca as a trusted site using your browser settings



- 4. Click on internet options
- 5. Click on the security tab, trusted sites and then “sites”



- 6. Click “add” and then “ok” to close the internet options.

