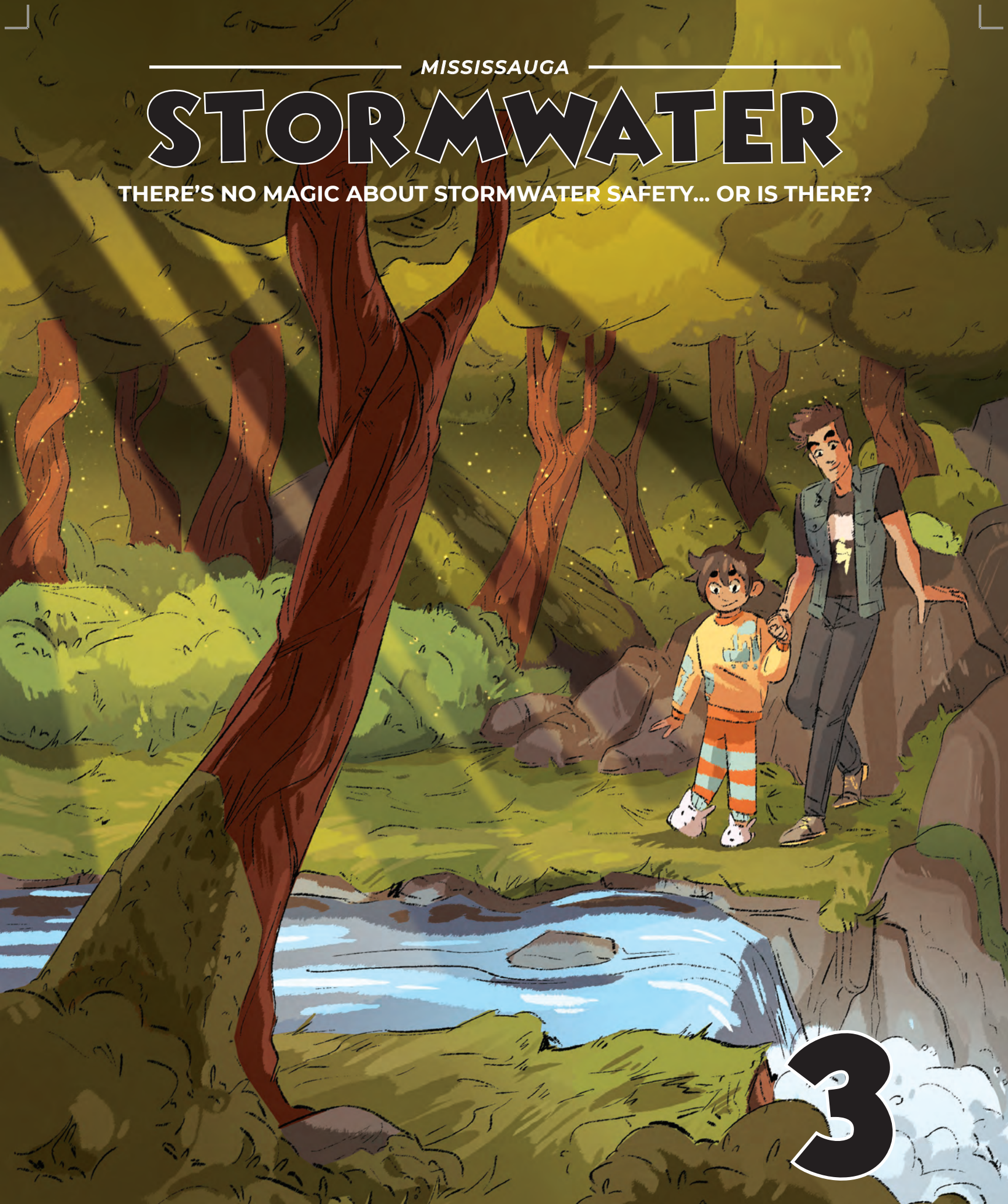
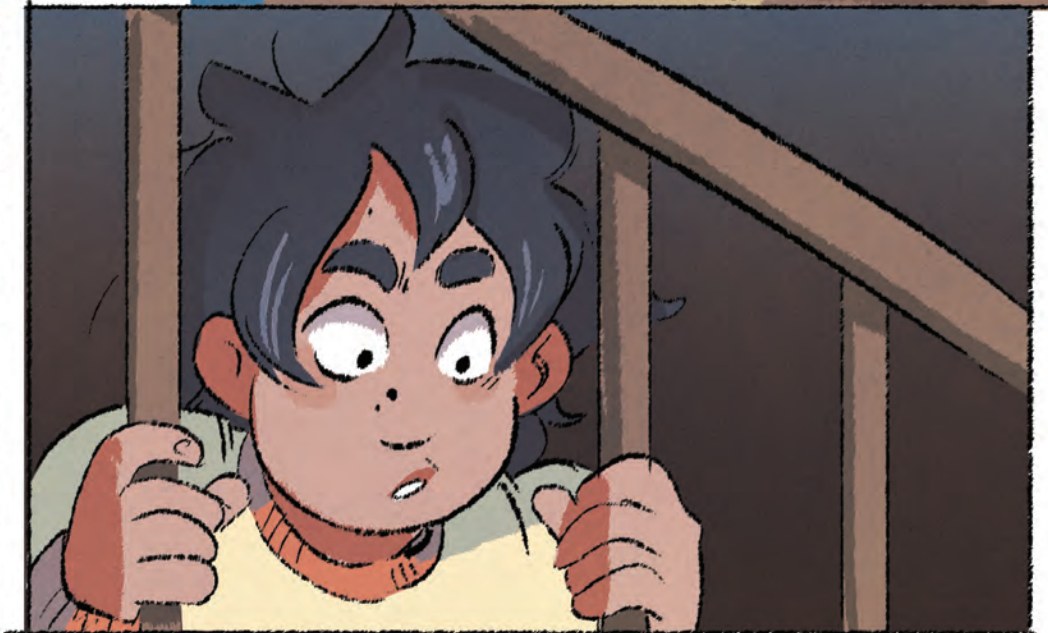


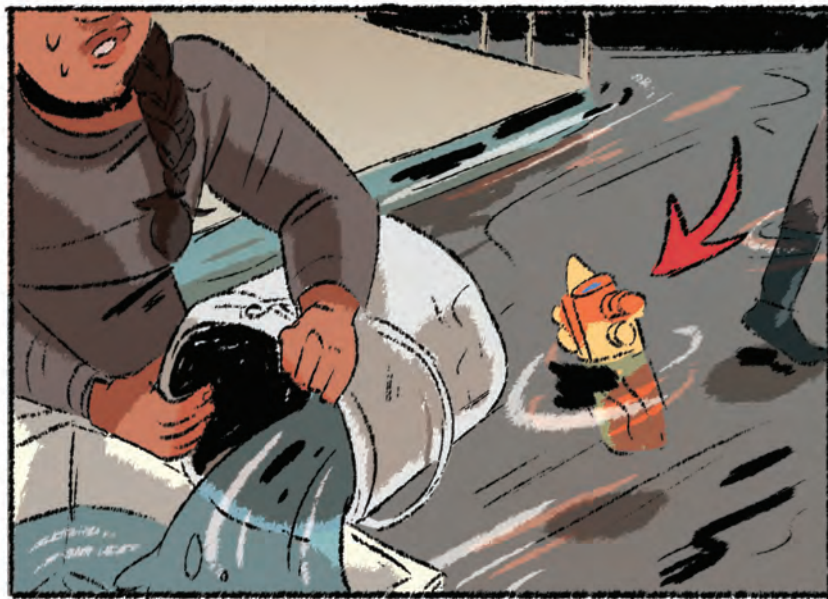
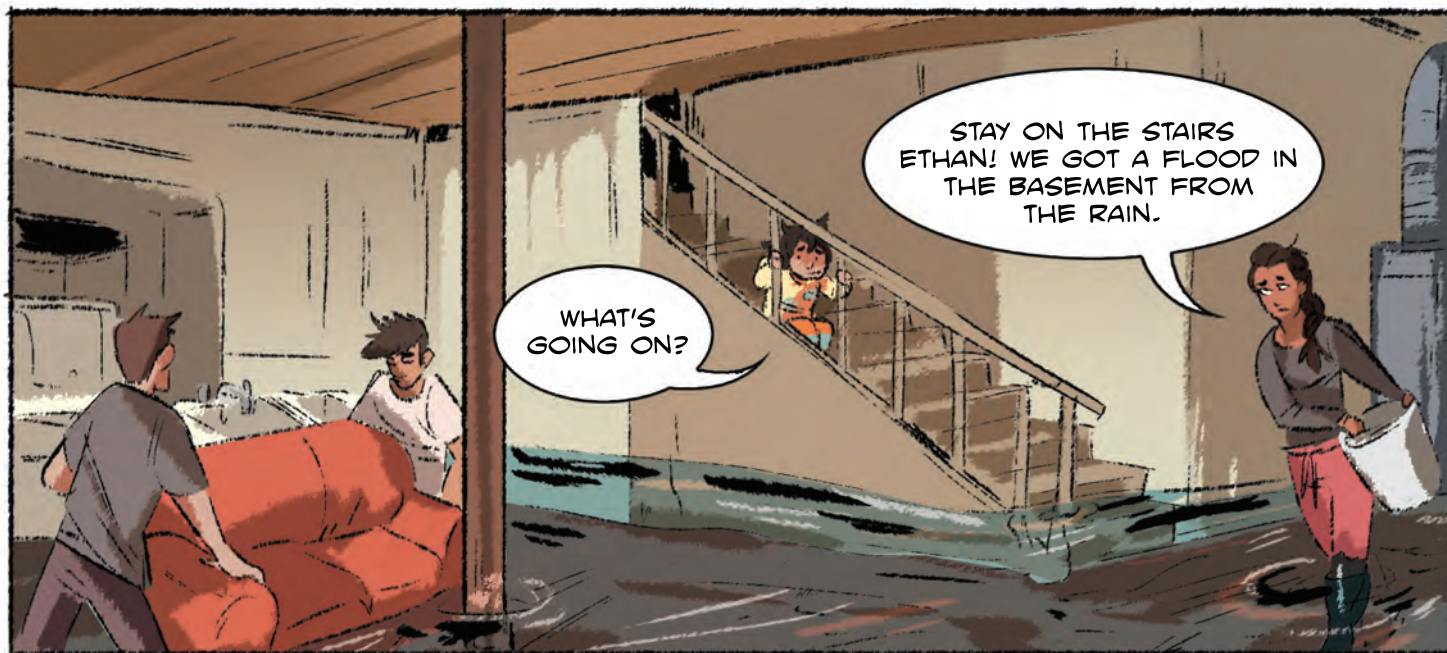
MISSISSAUGA

STORMWATER

THERE'S NO MAGIC ABOUT STORMWATER SAFETY... OR IS THERE?

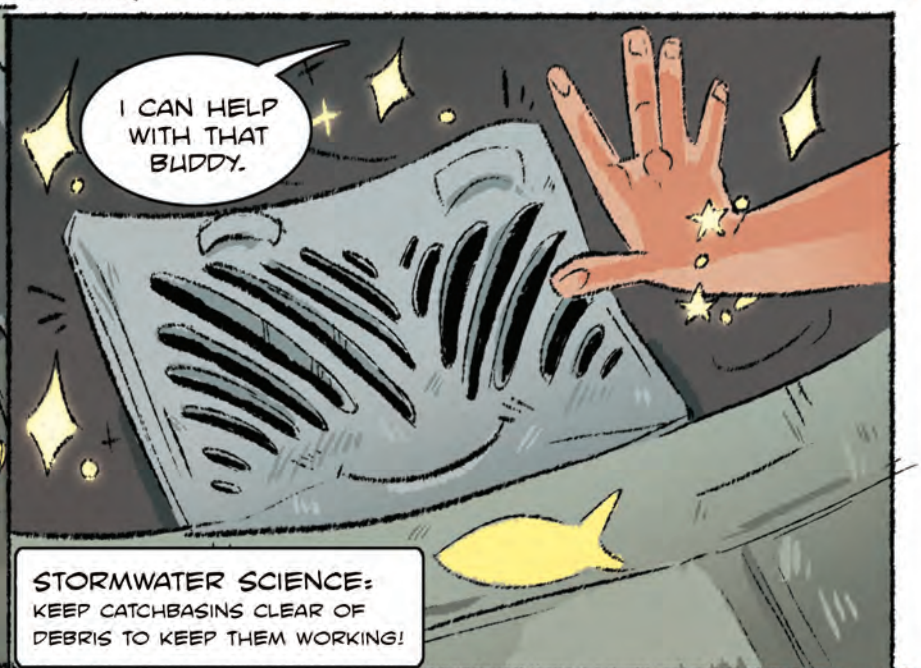
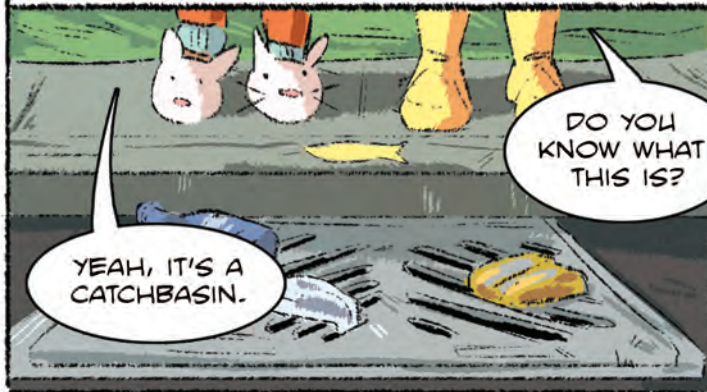


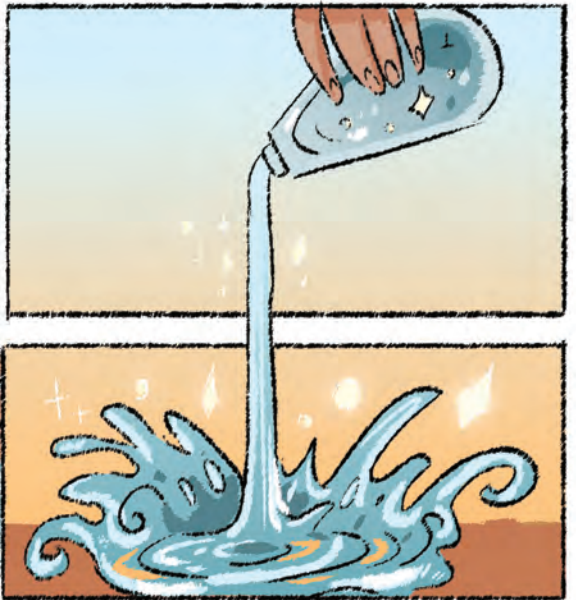


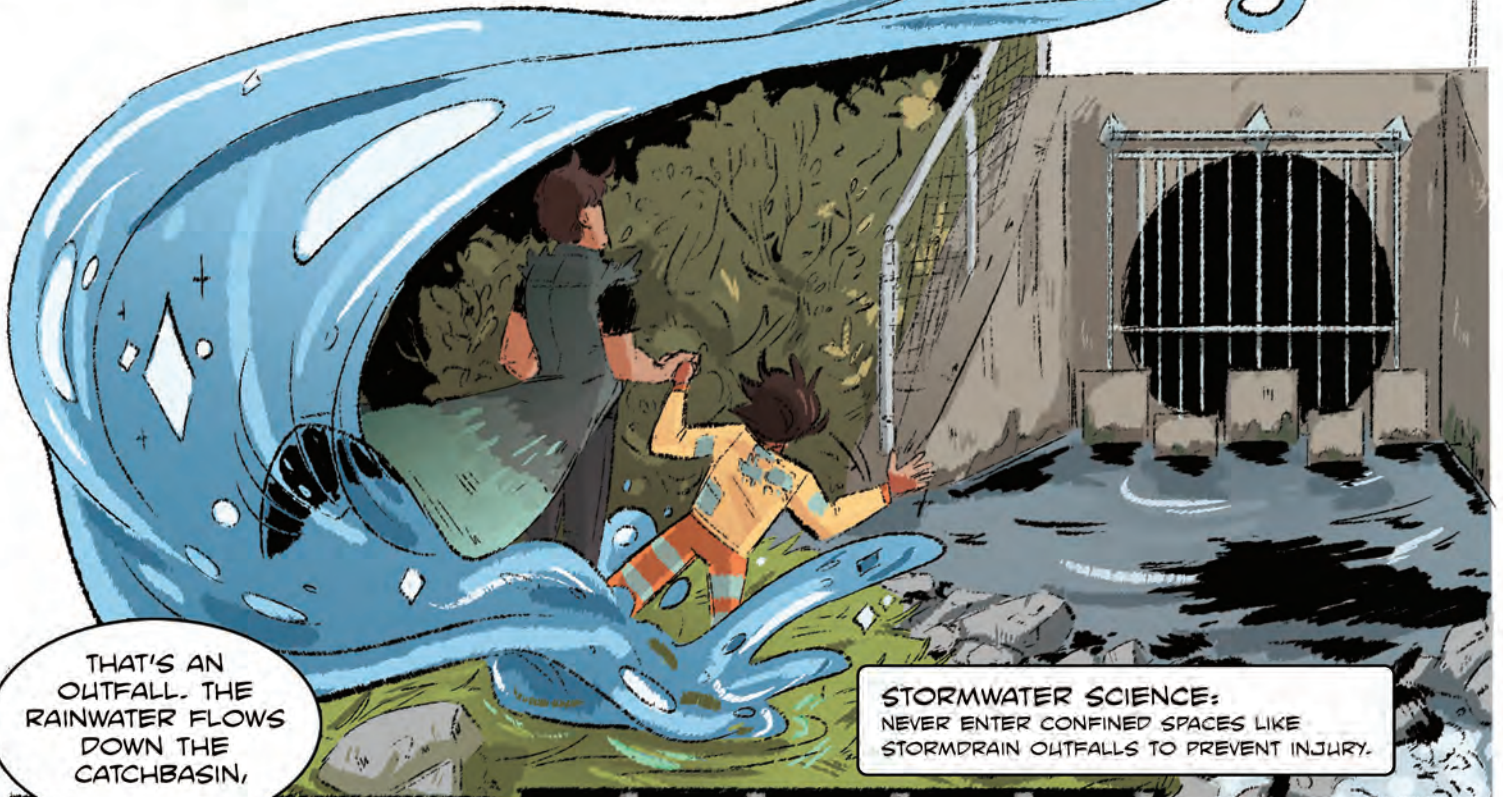












THAT'S AN
OUTFALL. THE
RAINWATER FLOWS
DOWN THE
CATCHBASIN,

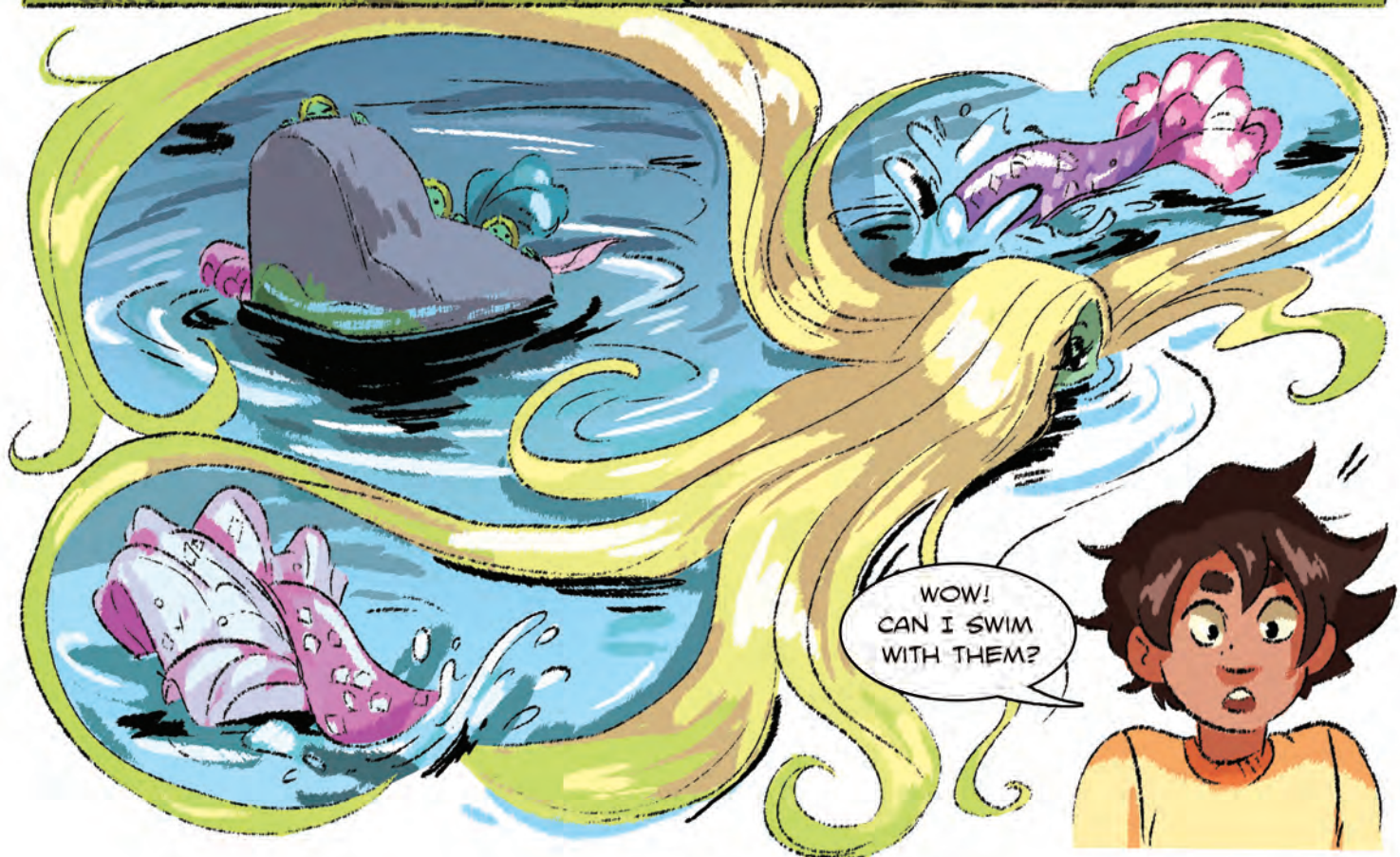
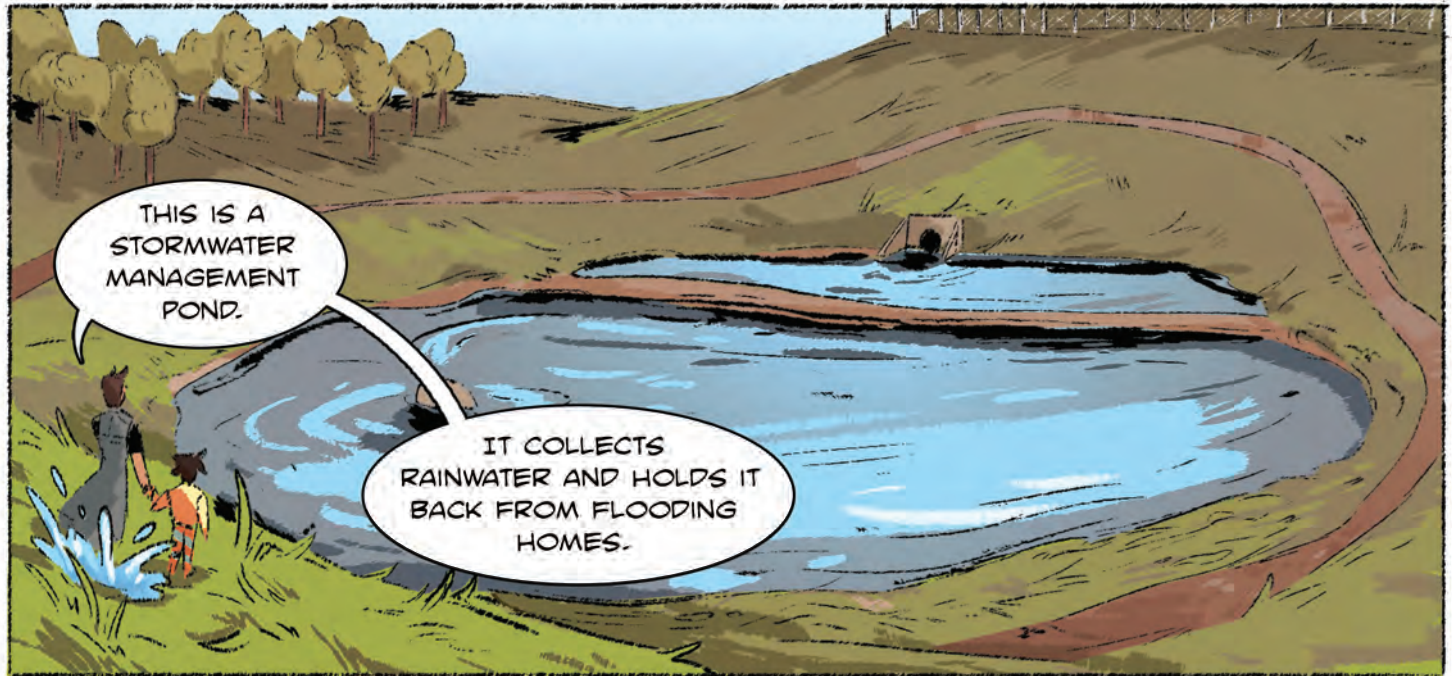
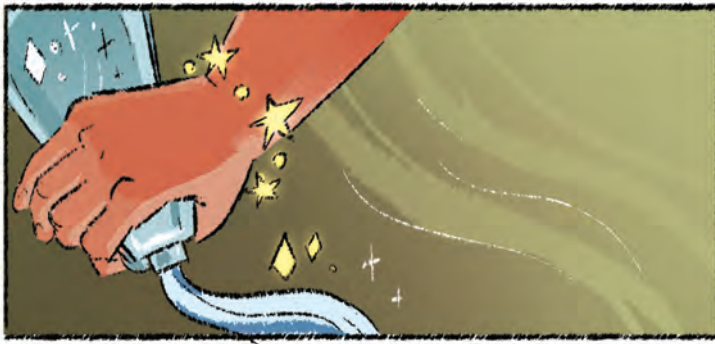
STORMWATER SCIENCE:
NEVER ENTER CONFINED SPACES LIKE
STORMDRAIN OUTFALLS TO PREVENT INJURY.

ALONG THE
STORM DRAINS
AND COMES
OUT HERE.

OH NO.
YOU DON'T WANT
TO GO IN THERE.
THERE'S A CAGE ON IT
FOR A REASON.

COOL!
CAN WE
GO IN?







OH NO.
THAT'S NO PLACE
FOR PEOPLE.

THEY MAY HELP
HOLD BACK FLOODWATER,
BUT THEY DON'T WANT
ANYONE TO GO INTO
THEIR POND....

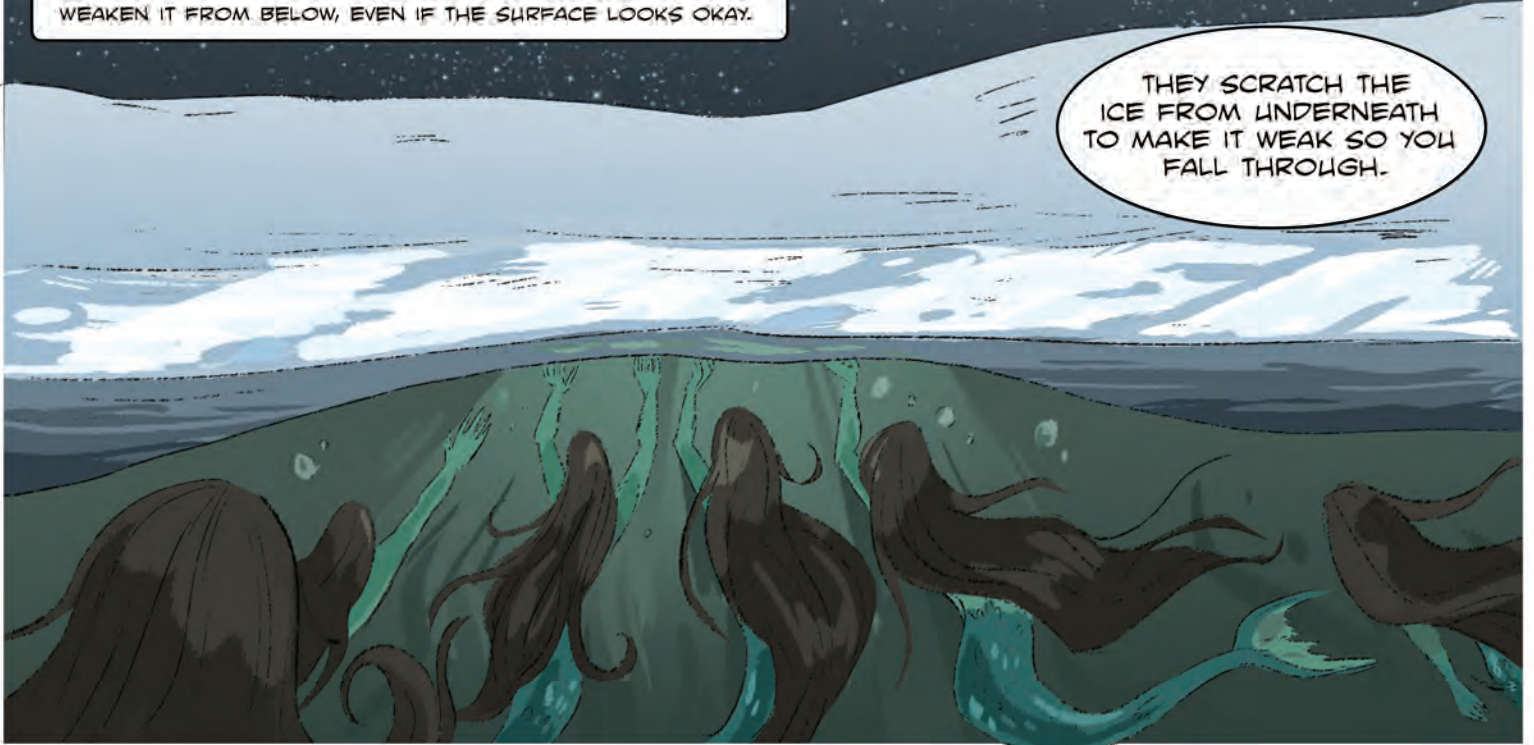


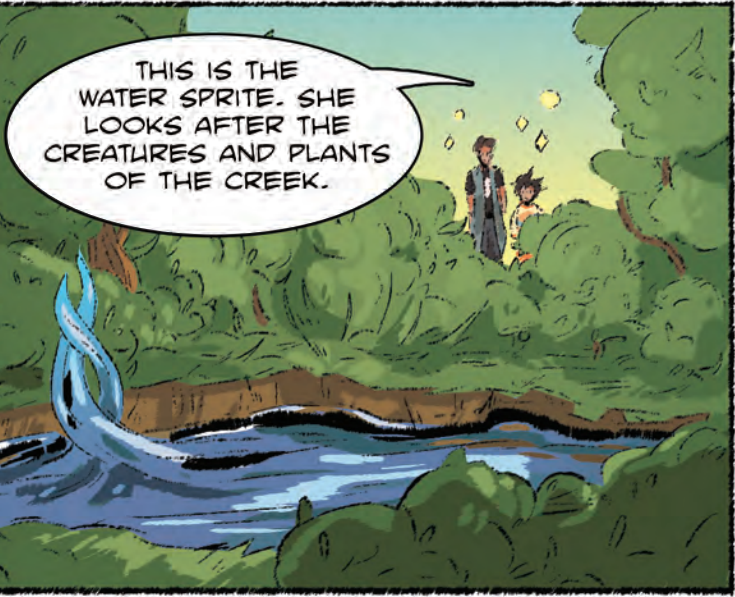
...THEY'LL EVEN
GET YOU IN THE
WINTER IF YOU GO OUT
ON THE ICE.

STORMWATER SCIENCE:

ALWAYS STAY CLEAR OF STORMWATER PONDS, INCLUDING THE ICE. IT'S NEVER SAFE! CONTINUOUS CURRENTS UNDER THE ICE WEAKEN IT FROM BELOW, EVEN IF THE SURFACE LOOKS OKAY.

THEY SCRATCH THE
ICE FROM UNDERNEATH
TO MAKE IT WEAK SO YOU
FALL THROUGH.





THIS IS THE WATER SPRITE. SHE LOOKS AFTER THE CREATURES AND PLANTS OF THE CREEK.



WELCOME TO MY CREEK. YOU CALL IT SHERIDAN CREEK BUT I CALL IT HOME.



HAVE YOU ALWAYS BEEN HERE?

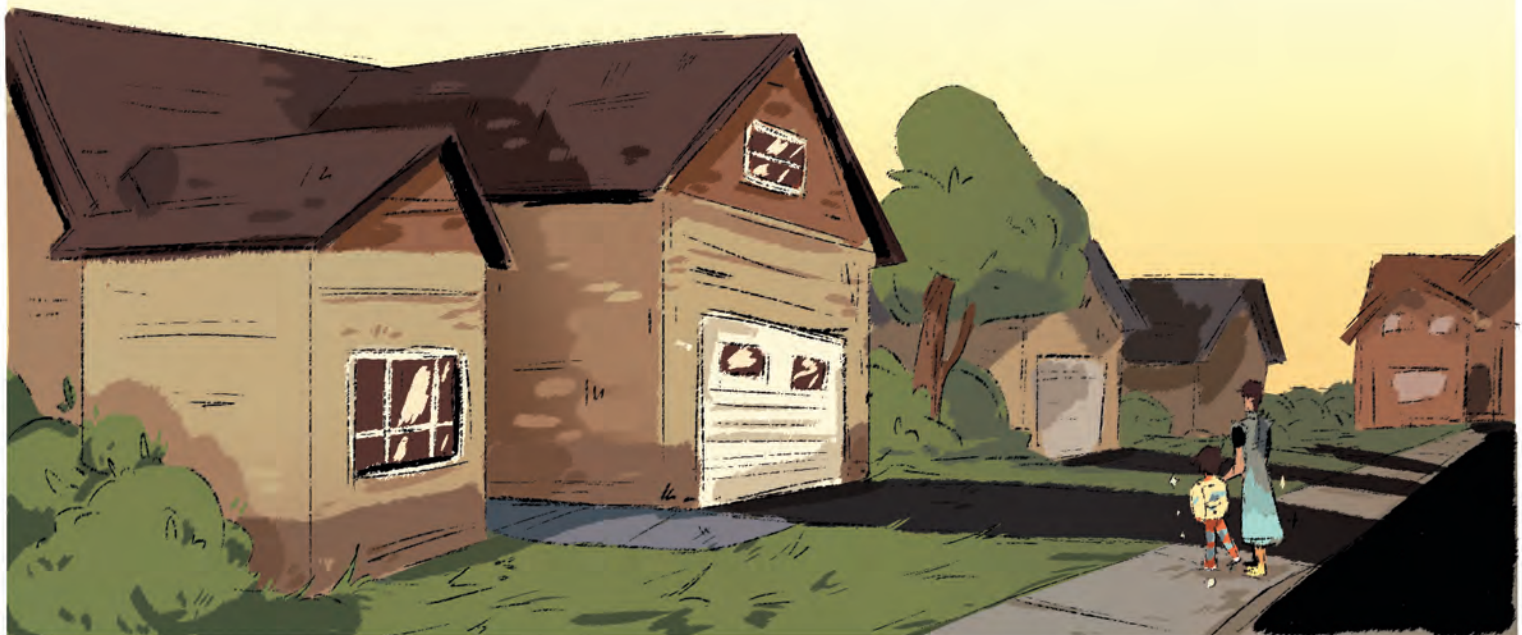


YES. I CAN'T LEAVE MY WATERSHED...

EVERY CREEK HAS ITS OWN WATER SPRITE.



...BUT THAT MEANS WHEN THE WATER GETS POLLUTED, I GET SICK.





BUT IF THE
WATER BELONGS IN
THE CATCHBASIN AND THE
OUTFALL AND THE POND
AND THE CREEK,

WHY IS IT IN
MY HOUSE? AND
WHAT ABOUT MY
TRAIN???

WHAT
ABOUT ME?

I'M STILL SOGGY
AND IT MAKES IT DIFFICULT
TO KEEP ALL OF YOU DRY.
I NEED YOUR HELP.

WHAT CAN
I DO?

SP/ISH!



LOTS. LET ME SHOW YOU.

YOUR PARENTS CAN FIX THE GRADING AND SLOPE SO THE RAINWATER RUNS AWAY FROM ME;

DISCONNECT MY DOWNSPOUTS;

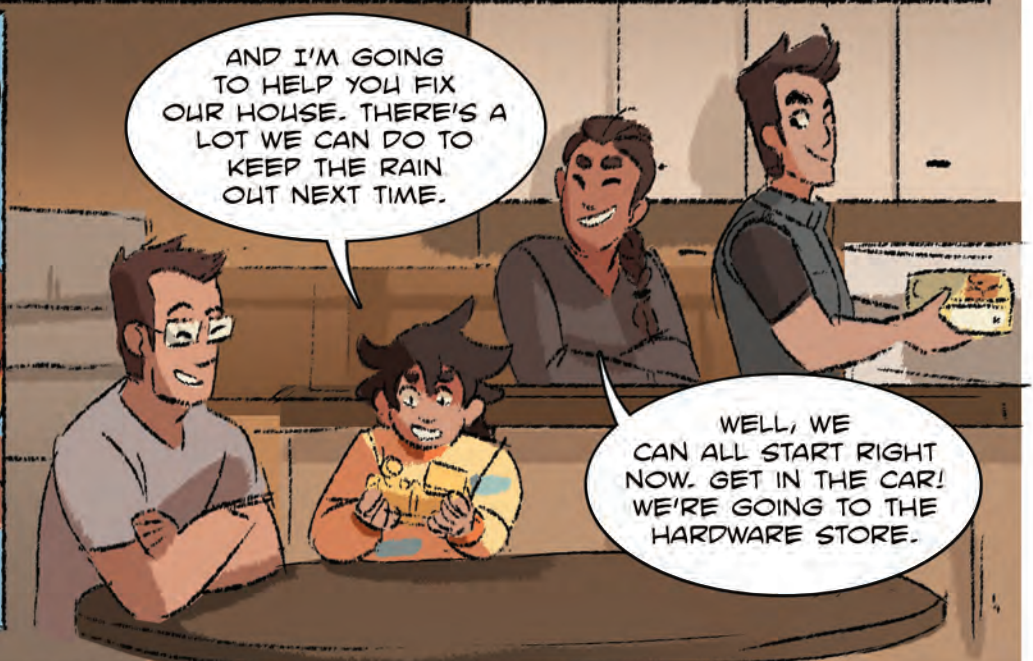
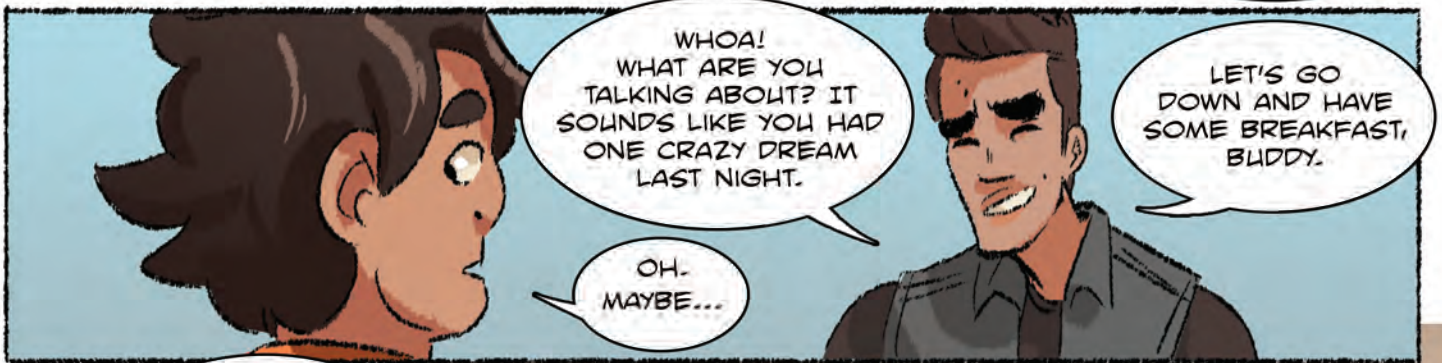
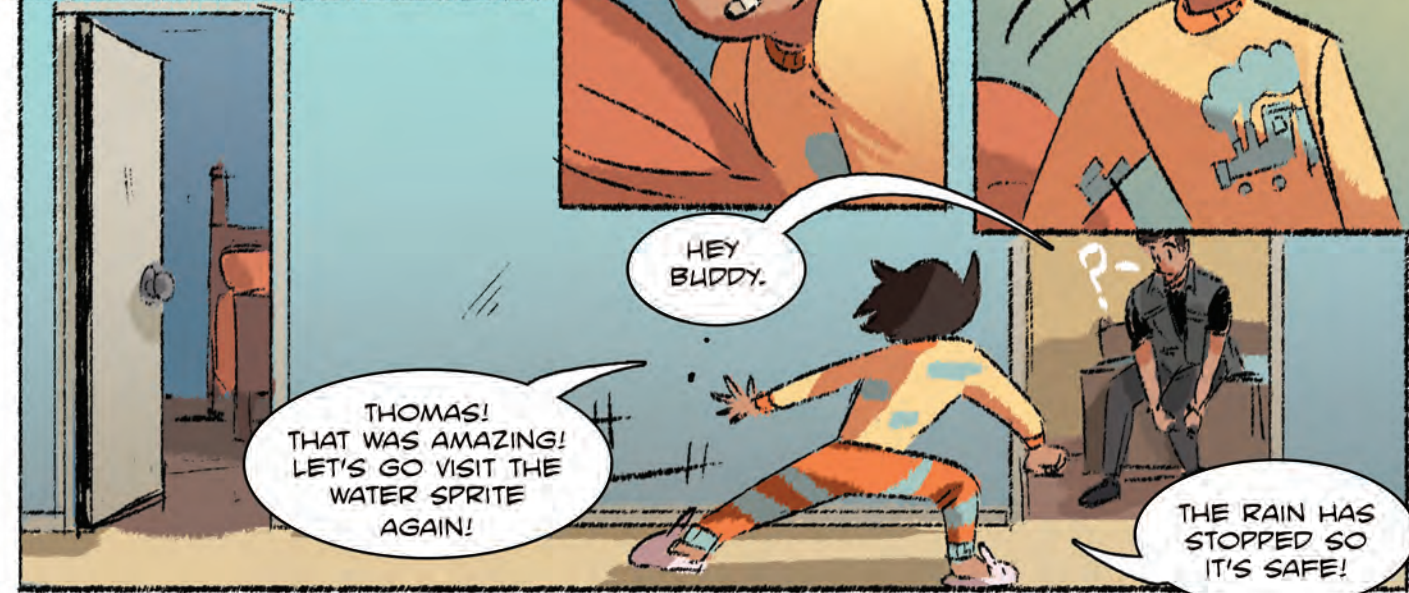
FIX ANY CRACKS IN MY FOUNDATION OR AROUND MY WINDOWS AND DOORS;

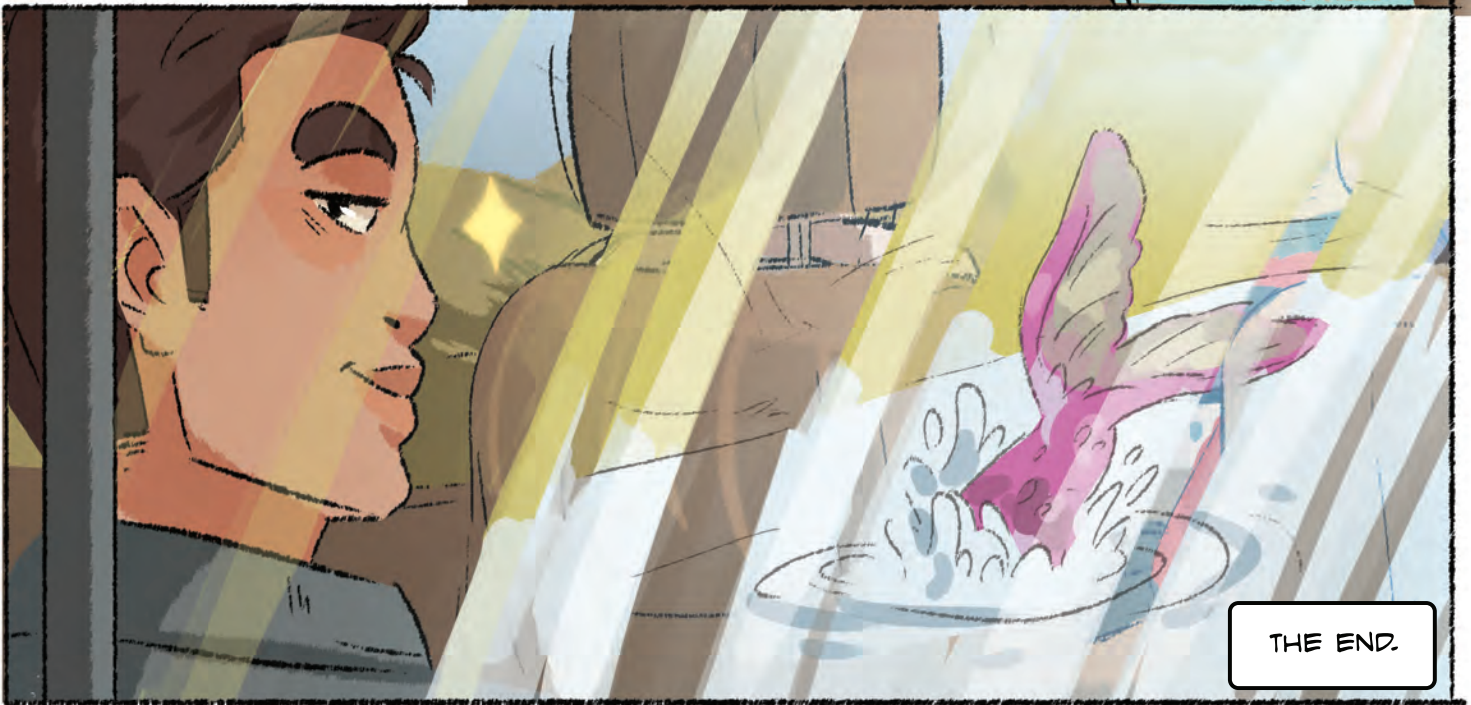
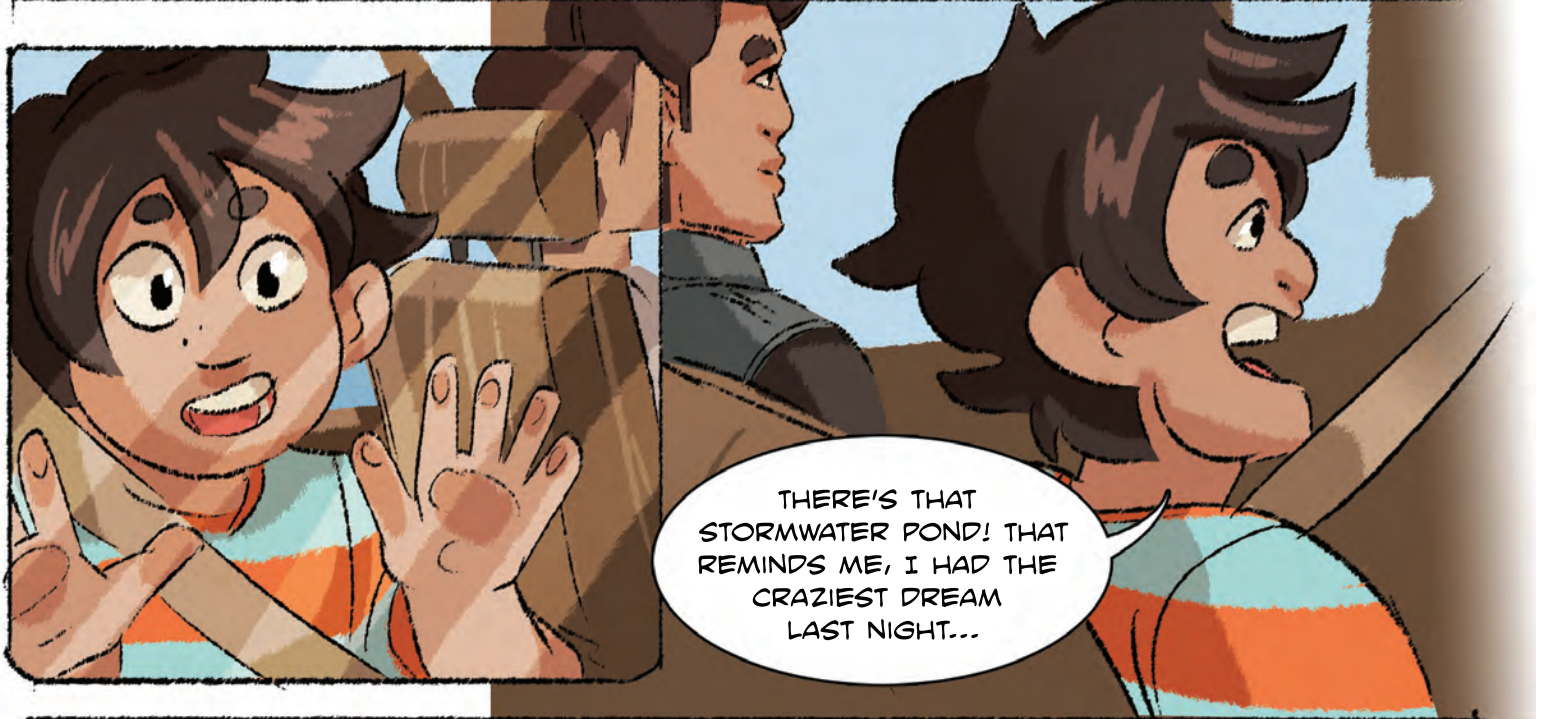
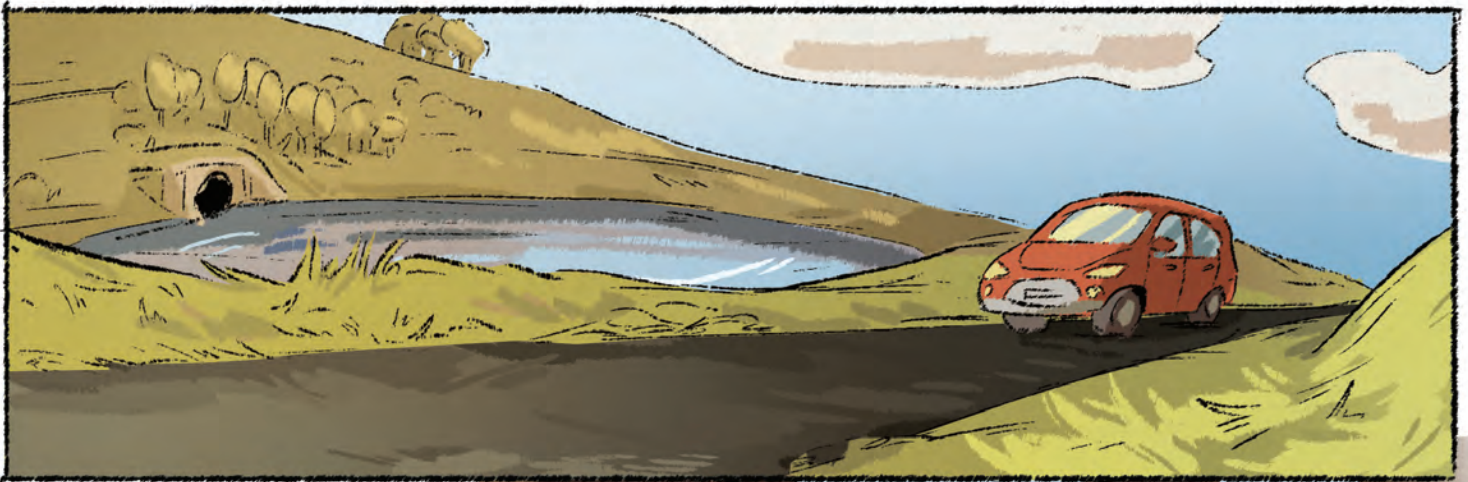
YOUR PARENTS CAN EVEN INSTALL A BACKFLOW VALVE OR A SUMP PUMP.

IF YOU AND YOUR PARENTS CAN LOOK AFTER ME, I DO BETTER AT KEEPING YOU ALL DRY. EVEN YOUR TRAIN.

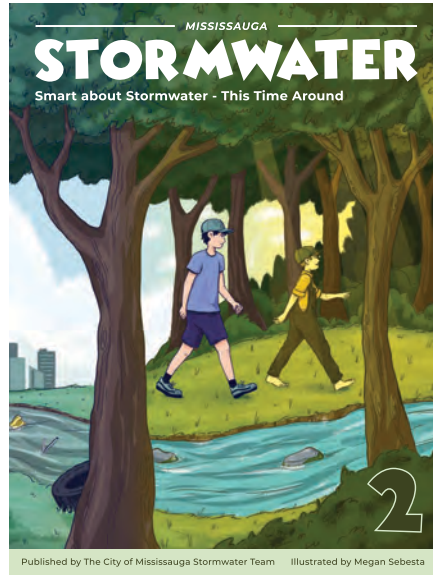
I PROMISE.

DON'T FORGET MY TRAIN.





Stormwater Comics Series



Watch for the other titles in the series!



STORMWATER SAFETY

SMART STORMWATER TIPS:

1. Clear catchbasins of leaves and debris from the boulevard so water can flow.
2. Keep clear of creeks during and after heavy rain when the water level rises.
3. Stay away from Stormwater channels, outlets and ponds.
4. Always slow down and follow safety instructions near road construction work.

To report spills or discharges into the storm system: call 3-1-1 or 905-615-4311 outside of the city.
 Website: mississauga.ca/portal/stormwater
 E-mail: stormwater@mississauga.ca
 Instagram: @saugastormwater

Illustrated by Michelle Dix
 Website: michelledix.com
 Instagram: @MichelleDixArt

THERE'S TIME TO LEARN ABOUT STORMWATER...

Young Ethan takes a magical journey to discover stormwater infrastructure and learns how to stay safe around stormwater.

The Stormwater Team would like to thank the TD Friends of the Environment Foundation for their kind financial support of the creation of these stormwater educational comics. We would also like to thank our artists (all recent graduates of Sheridan College's Visual Arts program) for their amazing energy, hard work and creativity and to the youth of Mississauga for whom these messages are intended. Stay positive, stay informed and your choices and actions can make a difference.

- The Stormwater Team

Watch for the little brook trout, Gill Downtrout, hiding in the illustrations to lead you to tips about stormwater!



page 5, 10, 13



This publication is provided for information purposes only. The Corporation of the City of Mississauga ("City") or its licensors own the copyright to all material in this publication. The City or the applicable third party licensor retains ownership to the copyright in all content in this publication including images, illustrations, designs, and written and other materials ("Content"). The Content includes valuable trade-marks, names, copyrights, and other proprietary material owned and used by the City and/or third party licensors. The trademarks and other intellectual property owned, controlled or licensed by the City are protected by intellectual property laws and regulations. You may copy material in limited quantities from this publication for your personal non-commercial use provided that the City's copyright and/or trade-mark notices remain affixed to the copied material. The Content may not otherwise be used or transmitted without the prior written permission of the City except in accordance with the provisions of the Copyright Act.

Financially Supported By:



TD Friends of the Environment Foundation