

ROADS

- 1. ALL FILL WITHIN ROAD ALLOWANCE AND EASEMENTS TO BE COMPACTED TO MIN 95% STANDARD PROCTOR DENSITY. THE BUTTABILITY AND COMPACTATION OF ALL MATERIALS TO BE CONFIRMED BY A RECOGNIZED SOIL CONSULTANT TO THE CITY ENGINEER...

CONNECTIONS

- 1. SANITARY: A) SINGLE AND DOUBLE MIN. 125mm DIA PVC SDR-26. B) CONNECTIONS TO SEWER TO BE MADE WITH MANUFACTURED TEE OR WYE WHERE APPLICABLE AND SHALL BE COLOUR CODED AS FOLLOWS...

GENERAL NOTES

- 1. THE CONTRACTOR IS TO CHECK AND VERIFY ALL DIMENSIONS. IF ANY DISCREPANCIES, THEY MUST BE REPORTED TO THE ENGINEER IMMEDIATELY PRIOR TO CONSTRUCTION.

STORM SEWERS

- 1. ALL STORM SEWER MATERIALS AND CONSTRUCTION METHODS MUST CORRESPOND TO CURRENT MUNICIPAL STANDARDS AND SPECIFICATIONS.

SANITARY SEWERS

- 1. ALL SANITARY SEWER MATERIALS AND CONSTRUCTION METHODS MUST CORRESPOND TO CURRENT STANDARDS AND SPECIFICATIONS.

WATERMAINS

- 1. ALL MATERIALS AND CONSTRUCTION METHODS MUST CORRESPOND TO THE CURRENT PEEL PUBLIC WORKS STANDARDS AND SPECIFICATIONS.

C.M. BENCHMARK No. 1352 ELEVATION: 84.522

DESCRIPTION: ELEVATION SHOWN HEREON ARE REFERRED TO THE CITY OF MISSISSAUGA No. 102 HAVING AN ELEVATION OF 84.522 METRES. BENCHMARK IS LOCATED ON THE NORTH FACE AT THE EAST CORNER OF RED BRICK OFFICE BUILDING No. 1352 ON THE SOUTH SIDE OF LAKESHORE ROAD EAST (HWY No. 2).

SKIRA & ASSOCIATES LTD. CONSULTING ENGINEERS 3464 Semenyk Court, Suite 100, Mississauga, Ontario L5C 4P8

PROPOSED CONDOMINIUM BUILDING

LOTS 6, 7, 8, 9 AND PART OF LANE REGISTERED PLAN A-20

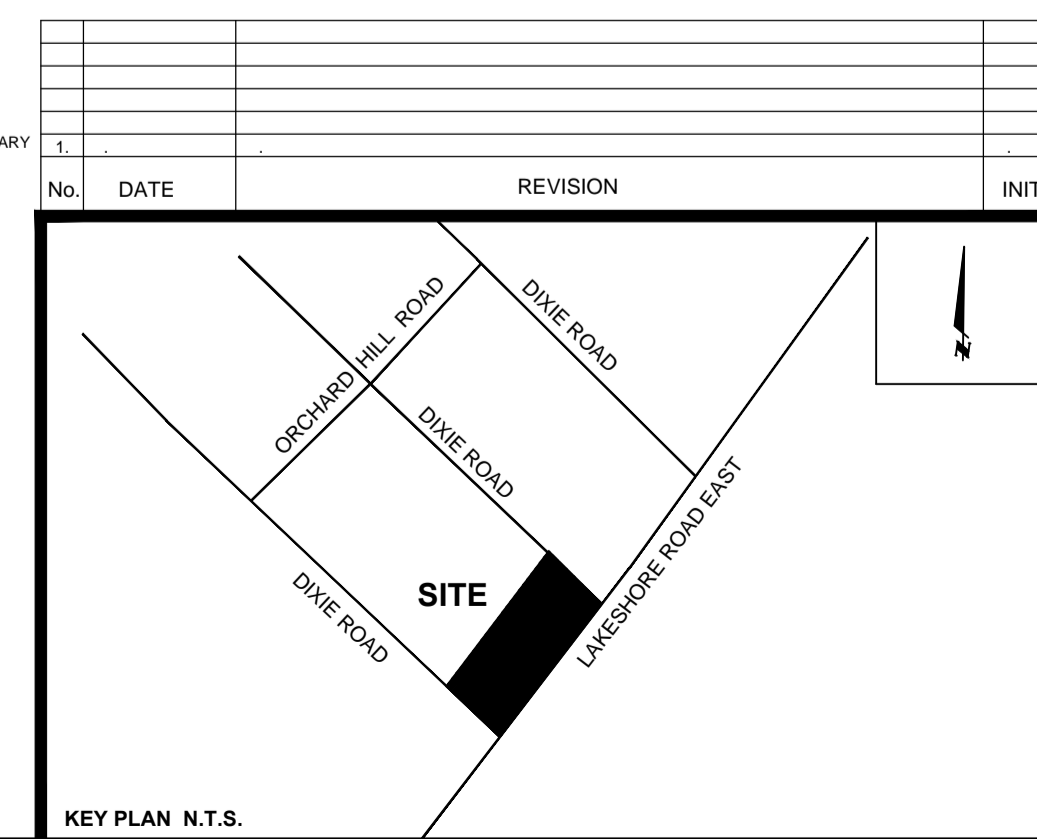
1381 LAKESHORE STREET EAST

CITY PARK HOMES 950 NASHVILLE RD. VAUGHAN, ON, PH: (905) 552-5200

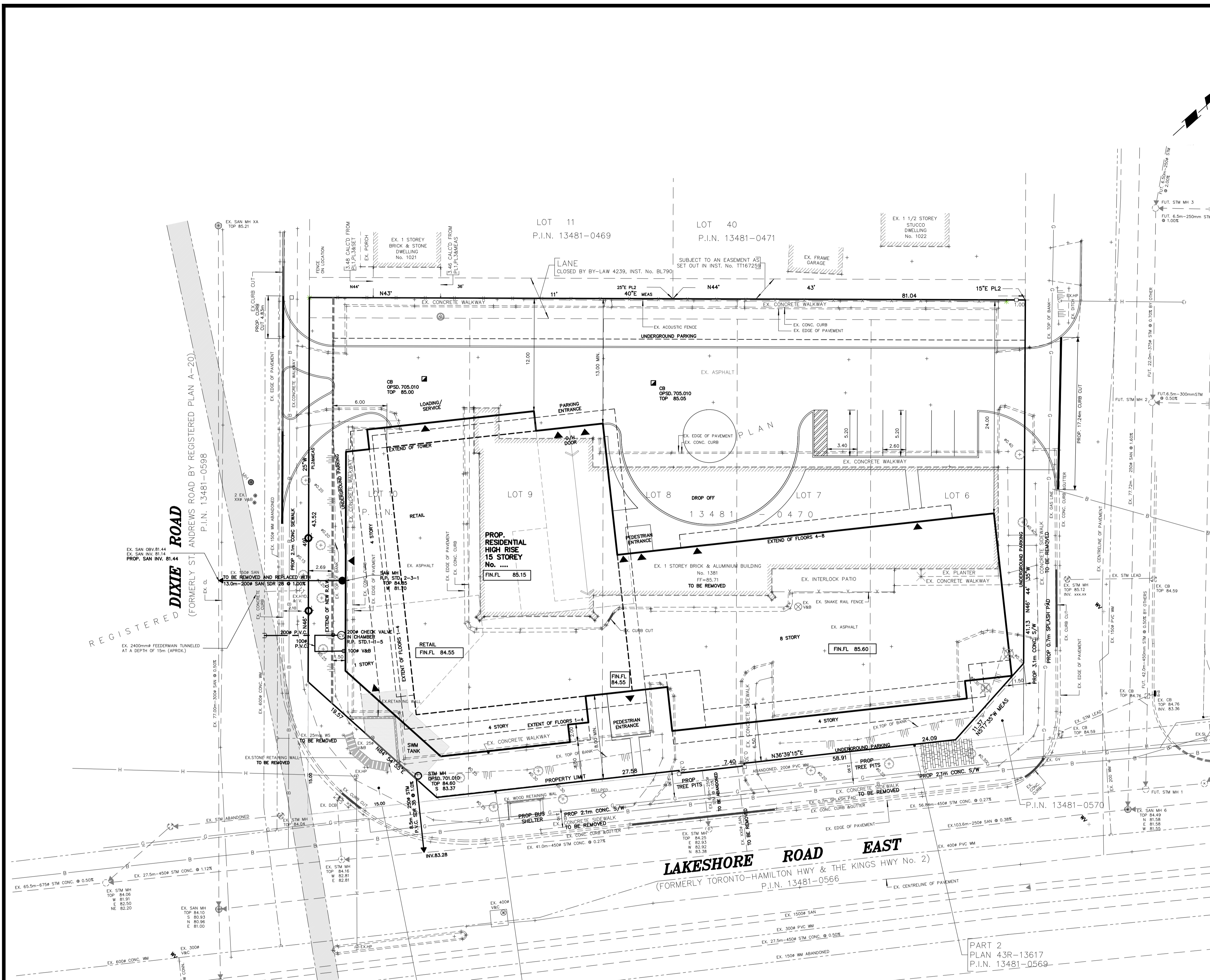


OVERALL SERVING PLAN

Table with columns: DATE, AREA, DWG No., SCALE, DRAWN BY, PROJECT No., CITY FILE, REGION FILE.



- LEGEND: EXISTING ELEVATION TO REMAIN, EXISTING ELEVATION, DIRECTION OF SURFACE FLOW, PROPOSED ELEVATION, PROPOSED CATCHBASIN WITH TEMPORARY SEDIMENT CONTROL.



PART 3 PLAN 43R-13647 P.I.N. 13481-0568

PART 2 PLAN 43R-13617 P.I.N. 13481-0569

DIXIE ROAD REGISTERED PLAN A-20 (FORMERLY ST. ANDREWS ROAD BY REGISTERED PLAN A-20) P.I.N. 13481-0598

LAKESHORE ROAD EAST (FORMERLY TORONTO-HAMILTON HWY & THE KINGS HWY No. 2) P.I.N. 13481-0566

CHERRIBELL ROAD (FORMERLY CHERRIBELL DRIVE) P.I.N. A-70