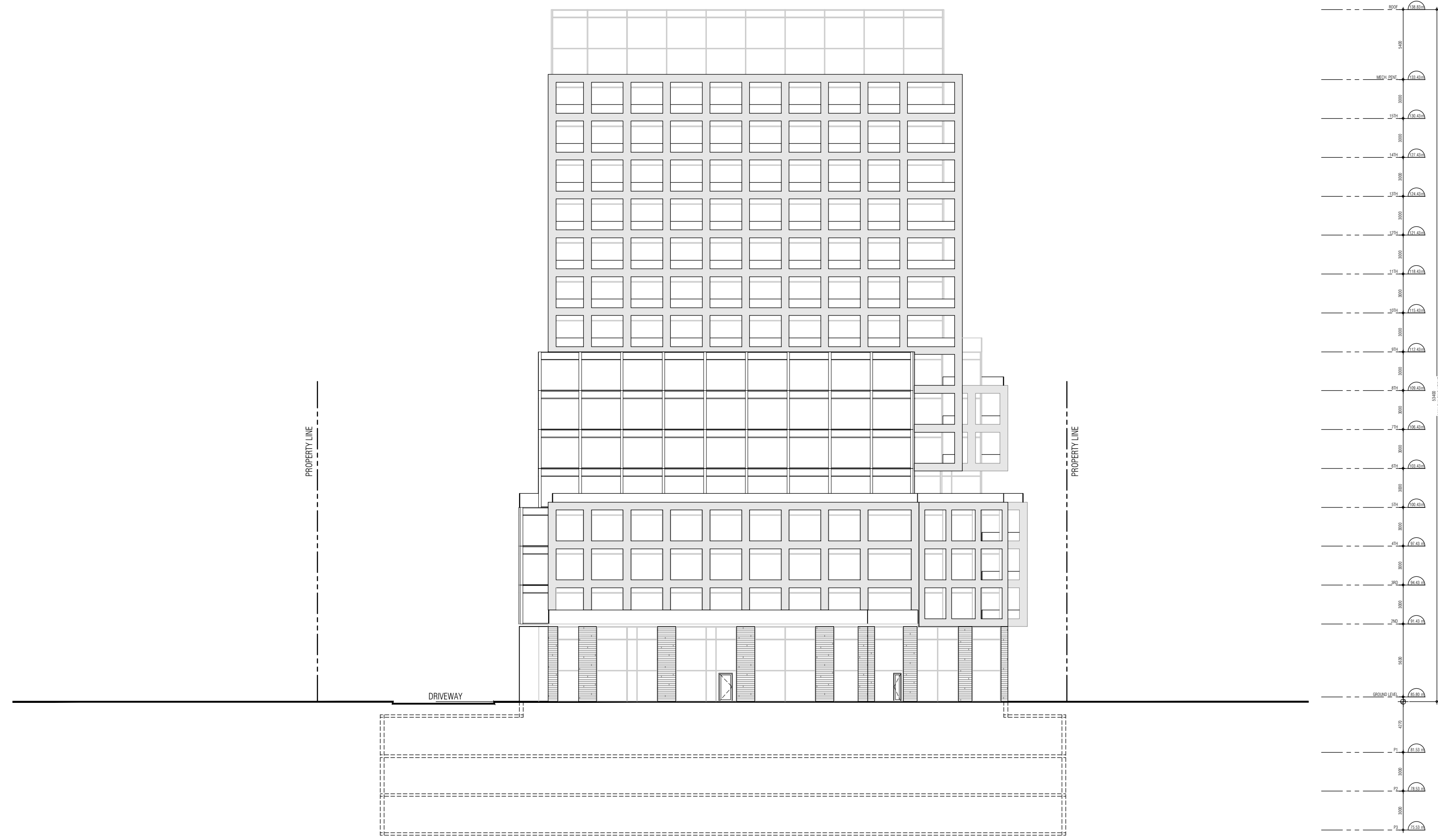


NORTH ELEVATION



WEST ELEVATION

THIS DRAWING, AS AN INSTRUMENT OF SERVICE, IS PROVIDED BY AND IS THE PROPERTY OF GRAZIANI-CORAZZA ARCHITECTS INC. THE CONTRACTOR MUST VERIFY AND ACCEPT RESPONSIBILITY FOR ALL DIMENSIONS AND CONDITIONS ON SITE AND MUST NOTIFY GRAZIANI-CORAZZA ARCHITECTS INC. OF ANY VARIATIONS FROM THE SUPPLIED INFORMATION. GRAZIANI-CORAZZA ARCHITECTS INC. IS NOT RESPONSIBLE FOR THE ACCURACY OF SURVEY, STRUCTURAL, MECHANICAL, ELECTRICAL, AND OTHER ENGINEERING INFORMATION SHOWN ON THIS DRAWING. REFER TO THE APPROPRIATE ENGINEERING DRAWINGS BEFORE PROCEEDING WITH THE WORK. CONSTRUCTION MUST CONFORM TO ALL APPLICABLE CODES AND REQUIREMENTS OF THE AUTHORITIES HAVING JURISDICTION. UNLESS OTHERWISE NOTED, NO INVESTIGATION HAS BEEN UNDERTAKEN OR REPORTED ON BY THIS OFFICE IN REGARDS TO THE ENVIRONMENTAL CONDITION OF THIS SITE.

THIS DRAWING IS NOT TO BE SCALED. ALL ARCHITECTURAL SYMBOLS INDICATED ON THIS DRAWING ARE GRAPHIC REPRESENTATIONS ONLY.

CONDITIONS FOR ELECTRONIC INFORMATION TRANSFER:
ELECTRONIC INFORMATION IS SUPPLIED TO THE OTHER ASSOCIATED FIRMS TO ASSIST THEM IN THE EXECUTION OF THEIR WORK. REVIEW. THE RECEIVING FIRMS MUST DETERMINE THE COMPLETENESS / APPROPRIATENESS / RELEVANCE OF THE INFORMATION IN RESPECT TO THEIR PARTICULAR RESPONSIBILITY.

GRAZIANI-CORAZZA ARCHITECTS INC. SHALL NOT BE RESPONSIBLE FOR:
1. ERRORS, OMISSIONS, INCOMPLETENESS DUE TO LOSS OF INFORMATION IN WHOLE OR PART WHEN INFORMATION IS TRANSFERRED.
2. TRANSMISSION OF ANY VIRUS OR DAMAGE TO THE RECEIVING ELECTRONIC SYSTEM WHEN INFORMATION IS TRANSFERRED.

- 1. JUNE 26 2020 ISSUED FOR ZBA BC
- 2. SEP.02.2020 RE-ISSUED FOR ZBA BC

APPLICANT INFORMATION
CITY PARK HOMES
850 NASHVILLE ROAD
KLEBURG, ONTARIO
T. 905.562.5200
L3J 1C2

**GRAZIANI
CORAZZA
ARCHITECTS**
1200 SHAWANON DRIVE, SUITE 100 MISSISSAUGA, ONTARIO L4W 1C3
T. 905.795.2801 F. 905.795.2844 WWW.GC-ARCHITECTS.COM

Mixed Use

Lakeshore City Park
1381 Lakeshore Road East
Mississauga Ontario

PROJECT ARCHITECT: B.G.
ASSISTANT DESIGNER: R.L.
DRAWN BY: J.L.
CHECKED BY: D.B.
PLOT DATE: SEP.01.2020
JOB #: 1629.18

**North & West
Elevations**

1:250 **A402**