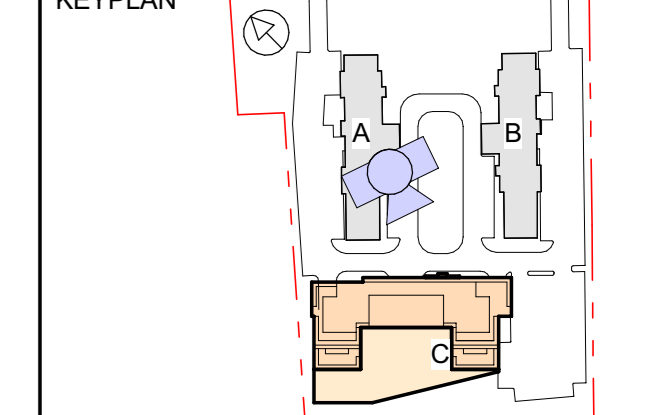




CLIENT
RANEE MANAGEMENT
 4122 Bathurst St., Toronto, ON M3H 3P2
 TEL: 416-756-3962

COPYRIGHT
 The content herein is the property of IBI Group Architects. All rights reserved. No part of this document may be reproduced, stored in a retrieval system, or transmitted in any form or by any means, electronic, mechanical, photocopying, recording, or by any information storage and retrieval system, without the prior written permission of IBI Group Architects. IBI Group Architects is a member of the IBI Group of companies.

IBI Group Architects (Canada) Inc.
 is a member of the IBI Group of companies.



ISSUES	DESCRIPTION	DATE
No.		
1	ISSUED FOR RE-ZONING/OPA	2020-08-31

SEAL

IBI GROUP
 2570 - 2590 Argyle Rd. Floor
 Toronto, ON M3H 2Y7, Canada
 Tel: 416 596 1000 Fax: 416 596 0644
 ibigroup.com

PROJECT
ARGYLE
 2570 - 2590 Argyle Rd.
 CITY OF MISSISSAUGA, ON
 PART OF BLOCK A
 REGISTERED PLAN E - 23

PROJECT NO:
 120325
 DRAWN BY:
 PROJECT MGR:

CHECKED BY:
 APPROVED BY:

SHEET TITLE
PERSPECTIVE EAST ELEVATION

SHEET NUMBER
A503

ISSUE
1

03 - EAST ELEVATION- PERSPECTIVE

2020-08-28 5:28:05 PM