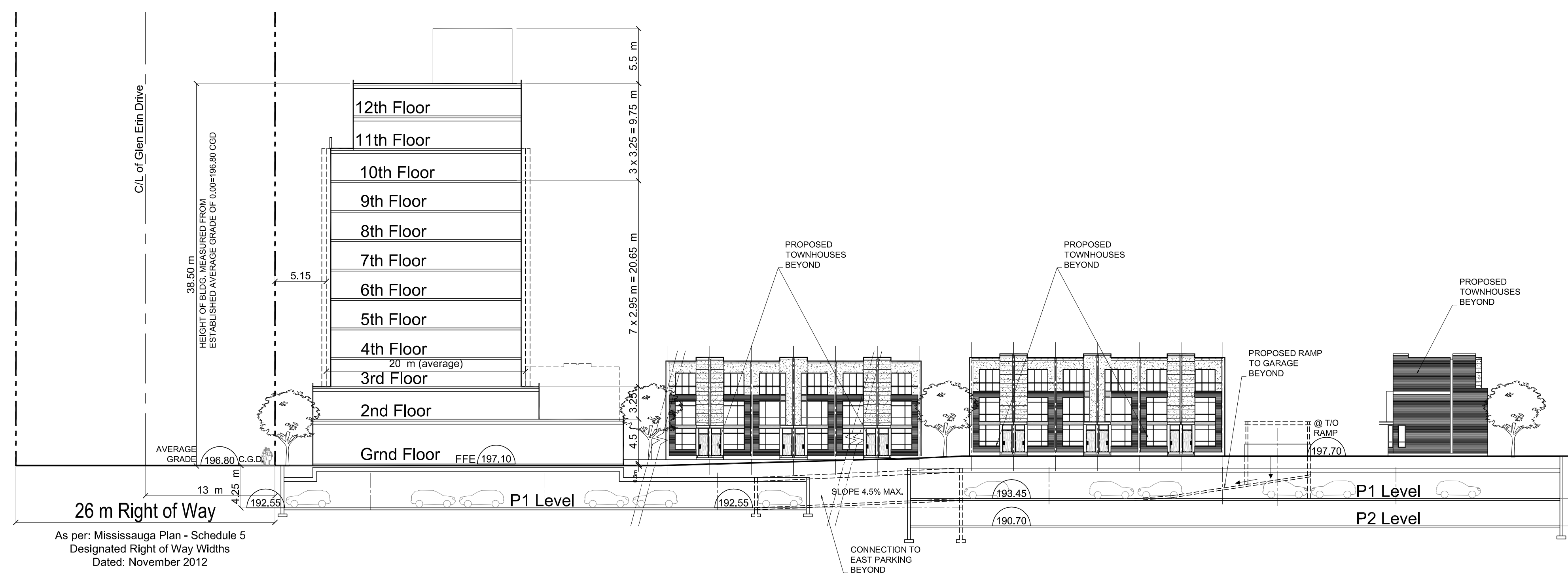


South-North Site Section / View from East



West-East Site Section / View from South

ISSUE:		
No	DATE	DESCRIPTION
1	2019-Oct-18	FOR REVIEW and COMMENTS
2	2019-Nov-29	FOR DARC REVIEW
3	2020-Apr-14	TO CONSULTANTS
4	2020-May-01	TO CONSULTANTS
5	2020-June-04	TO CONSULTANTS
6	2020-June-19	TO CONSULTANTS
7	2020-July-14	RE-ZONING APPLICATION
8	2020-Aug-07	Re-zoning Application

6	2020-July-21	COORDINATION
5	n/a	
4	2020-July-02	COORDINATION
3	2020-June-19	COORDINATION
2	2020-June-04	COORDINATION
1	2020-Jan-31	DARC REVIEW COMMENTS

REVISION:

Starwood Group Inc.

IBI IBI GROUP ARCHITECTS (CANADA) INC.
 7th Floor-55 St. Clair Avenue West
 Toronto ON M4V 2Y7 Canada
 tel 416 596 1830 fax 416 596 0644
 ibigroup.com

© COPYRIGHT IBI GROUP ARCHITECTS (CANADA) INC.
 ALL RIGHTS RESERVED.

IBI GROUP ARCHITECTS (CANADA) INC. RETAINS ALL RIGHTS OF OWNERSHIP AND COPYRIGHT IN THE ELECTRONIC FILES AND REPRODUCTIONS THEREOF. THEY MAY BE REPRODUCED ONLY FOR LEGITIMATE PURPOSES RELATING TO THE SPECIFIC PROJECT FOR WHICH THEY WERE PRODUCED. THEY MAY NOT BE ALTERED IN ANY WAY WITHOUT THE EXPRESS WRITTEN APPROVAL OF THE ARCHITECTS.

**6719 Glen Erin Drive
 Mississauga, Ontario**

SITE SECTIONS

Scale:	1 : 300
Date created:	2019-Aug-01
Proj. No:	25205
Dwg. No:	A-4.1

As per: Mississauga Plan - Schedule 5
 Designated Right of Way Widths
 Dated: November 2012