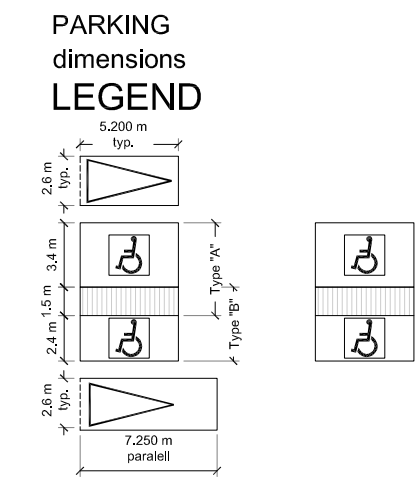
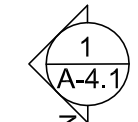
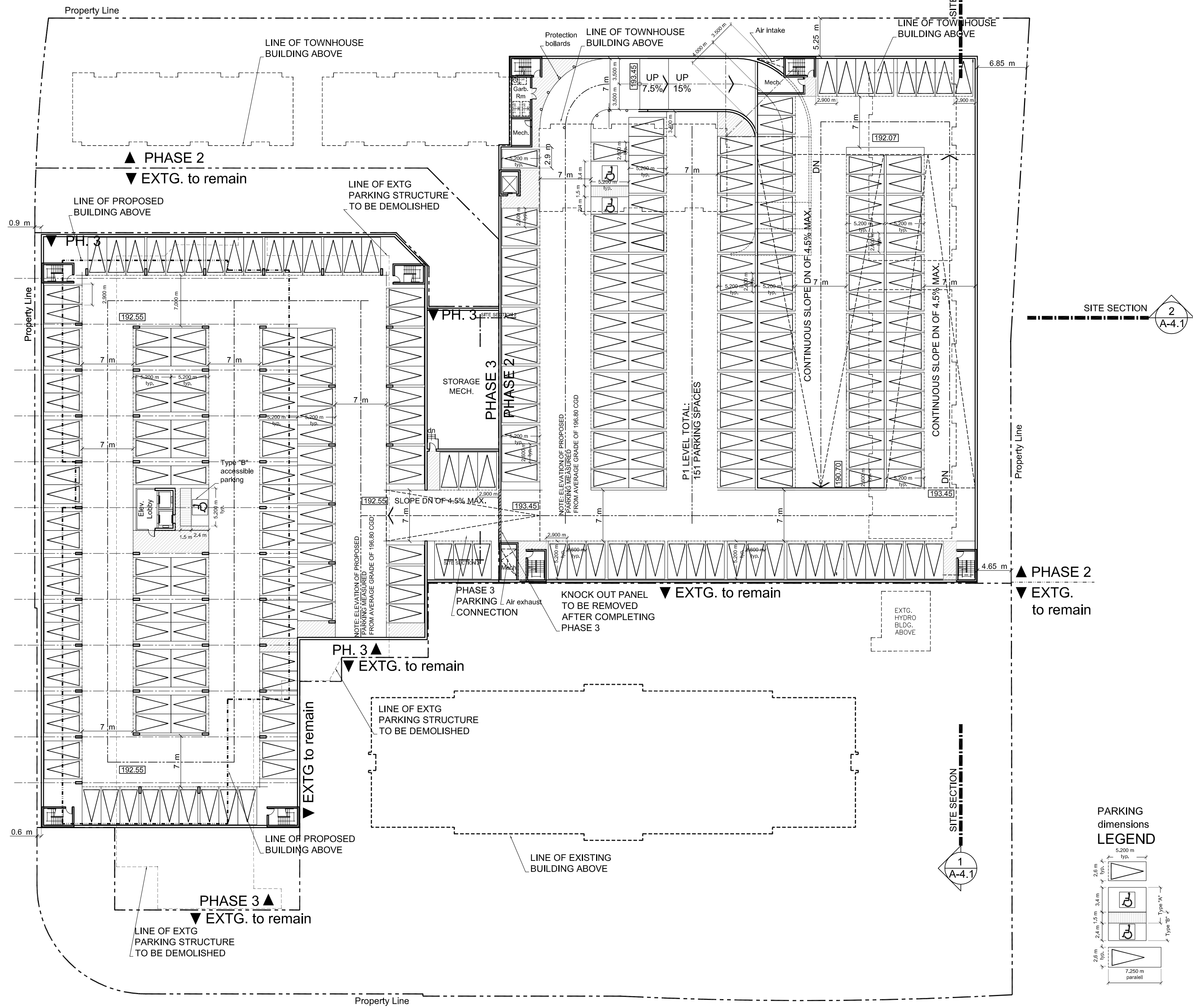


ISSUE:		
No	DATE	DESCRIPTION
1	2019-Oct-18	FOR REVIEW and COMMENTS
2	2019-Nov-29	FOR DARC REVIEW
3	2020-Apr-14	TO CONSULTANTS
4	2020-May-01	TO CONSULTANTS
5	2020-June-04	TO CONSULTANTS
6	2020-June-19	TO CONSULTANTS
7	2020-July-14	RE-ZONING APPLICATION
8	2020-Aug-07	Re-zoning Application



No	DATE	DESCRIPTION
4	2020-July-02	COORDINATION
3	2020-June-19	COORDINATION
2	2020-June-04	COORDINATION
1	2020-Jan-31	DARC REVIEW COMMENTS

REVISION:

**Starwood Group Inc.**

**IBI** IBI GROUP ARCHITECTS (CANADA) INC.  
 7th Floor-55 St. Clair Avenue West  
 Toronto ON M4V 2Y7 Canada  
 tel 416 596 1830 fax 416 596 0644  
 ibigroup.com

© COPYRIGHT IBI GROUP ARCHITECTS (CANADA) INC. ALL RIGHTS RESERVED.

IBI GROUP ARCHITECTS (CANADA) INC. RETAINS ALL RIGHTS OF OWNERSHIP AND COPYRIGHT IN THE ELECTRONIC FILES AND REPRODUCTIONS THEREOF. THEY MAY BE REPRODUCED ONLY FOR LEGITIMATE PURPOSES RELATING TO THE SPECIFIC PROJECT FOR WHICH THEY WERE PRODUCED. THEY MAY NOT BE ALTERED IN ANY WAY WITHOUT THE EXPRESS WRITTEN APPROVAL OF THE ARCHITECTS.

**6719 Glen Erin Drive  
 Mississauga, Ontario**

**P1 PARKING  
 LEVELPLAN**

	Scale:	<b>1 : 400</b>
	Date created:	<b>2019-Aug-01</b>
	Proj. No:	<b>25205</b>
	Dwg. No:	<b>A-2.1</b>