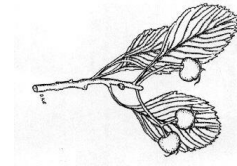


Arborist Report for Wyndham Street & Main Street junction

Mississauga, Ontario



DAWhiteTreeCare.com

Tel: 416 431 2453, E-mail: DAWhiteTreeCare@GMail.com

D. Andrew White M. Sc. ISA Certified Arborist ON-0734. 78 Marcella St. Toronto, ON, M1G 1L2.

1. Introduction

The following is an arborist report for the property at Wyndham Street and Main Street junction Drive, in Mississauga Ontario. The purpose of this report was to ascertain the potential impacts of the proposed construction of a new development on the trees on the site and on adjacent properties.

2. Methods

An on-site inspection was made on October 13, 2017. The sizes of individual trees were measured as diameter at breast height (DBH), breast height being 137 cm from ground level. The locations of these trees are indicated on the modified site plan (Fig. 1). From the data collected plant Condition Rating (CR), Location Rating (LR), Species Rating (SR), and minimum Tree Protection Zones (TPZ), were estimated.

It is necessary to protect all trees designated for preservation during both demolition and construction. This tree protection can be accomplished by protecting the said trees with *tree protection barriers*.

Tree barriers for road allowance areas would be composed of a 1.2 metres (4 ft.) high orange plastic web snow fencing secured on 2"x4" wood frames. Usually, tree protection barriers, not on road allowance, are to be 1.2 metres (4 ft.) high, and composed of plywood

3. Discussion

There are plans to develop the site at Wyndham Street and Main Street junction several non-exempt trees would need to be injured or removed, in order to allow for the proposed development (Table 1, Fig. 1).

Roadside Trees:

One (1) roadside tree over 15cm DBH would be removed (Table 1, Fig. 1 Trees #4). The tree is in conflict with the proposed development.

One (1) exempt roadside tree (DBH less than 15cm) would also need to be removed. (Table 1, Fig. 1 Trees #3).

Three (3) roadside trees are to be preserved. (Table 1, Fig. 1 Trees #5a, 5b, 10).

Table #1. Road Allowance Tree Protection & Replacement Chart

Tree number (No.), species, Comments with: diameter at breast height (DBH); and Condition Rating (CR).

No.	Tree Species	DBH	Comments
#4	Manitoba Maple	78+	Remove: In conflict with the entrance to Block 3 townhouse 2 replacement trees required CR: 55%
#3	Black Locust	<15	Remove: Exempt Tree CR: 70%
#5a, 5b & 10	Green Ash Norway Maple	<15	Protect: Proposed grade changes beyond TPZ of trees. Mitigation: The tree would be protected by a web-fence barrier TPZ: 1.8 m (min)

Private Trees:

Ten (10) privately owned trees over 50cm DBH would be removed. These trees are in conflict with the proposed development. (Table 2, Fig. 1 Trees #2, 9, 18, 20, 22, 23, 24, 29, 31, 32).

Twenty-five (25) private owned trees over 15cm DBH would be removed. These trees are in conflict with the proposed development. . (Table 2, Fig. 1 Trees #6, 7, 8, 12, 13, 14, 15, 16, 17, 21, 25, 26, 27, 28, 30, 44, 45, 46, 47, 48, 49, 50, 51, 52, 53).

One (1) exempt privately owned tree (DBH less than 15cm) would also need to be removed. This tree is in conflict with the proposed development (Table 2, Fig. 1 Tree # 19).

Thirty (30) privately owned trees are to be preserved. Four (4) of which are at risk of injury due to construction of the proposed development.

Table #2. Private Tree Protection & Replacement Chart

Tree number (No.), species, Comments with: diameter at breast height (DBH); and Condition Rating (CR).

No.	Tree Species	DBH	Comments
#2, 9, 18, 20, 22, 23, 24, 29, 31, 32)	Black Locust White pine White spruce Manitoba maple Black walnut Sugar maple	50+	Remove: In conflict with the proposed development 20 replacement trees required
#6, 7, 8, 12, 13, 14, 15, 16, 17, 21, 25, 26, 27, 28, 30, 44, 45, 46, 47, 48, 49, 50, 51, 52, 53	Sugar Maple Blue Spruce White Pine White Mulberry White Cedar White Spruce Black Locust Norway Maple Manitoba Maple Pear Tree	15-50	Remove: In conflict with the proposed development 25 replacement trees required
#19	Black Locust	<15	Remove: Exempt Tree
#33, 34, 35, 36, 38, 40, 41, 42, 43, 54 -70	Black Walnut Manitoba Maple Black Locust Norway Maple	15+	Protect: Proposed grade changes beyond TPZ of trees - no replacement trees required. Mitigation: No protection fencing required – trees are far away enough from construction areas
#1, 11, 37 ,39	White Elm Juniper Manitoba Maple	24+	Risk of Injury: proposed grade changes within TPZ of trees. Mitigation: These trees would be protected by a web-fence barrier TPZ: 1.8 m (min)

Neighbours' Trees:

All trees on a neighbouring property could be retained without risk of injury. The tree would be over its TPZ from the worksite (Table 3, Fig. 1, Tree #71-82).

Table #3. Neighbouring Tree Protection & Replacement Chart

Tree number (No.), species, Comments with: diameter at breast height (DBH); and Condition Rating (CR).

No.	Tree Species	DBH	Comments
#71-82	Black Walnut Sugar Maple White Elm Green Ash Black Locust Manitoba Maple Basswood	20+	Proposed grade changes beyond TPZ of trees – no replacement trees required. Mitigation: No protection fencing required – trees are far away enough from construction areas TPZ: 1.8 m (min)

3.2 Replacement Trees:

MSLA Landscape Architects has developed a landscape plan for the Wyndham & Main St property (*L2-01 – MSLA Landscape Plan*).

The City of Mississauga tree replacement requirements are as follows:

- If you remove a healthy tree with a diameter that is 49 cm or less, one replacement tree is required.
- If you remove a healthy tree with a diameter of 50 cm or greater, two replacement trees are required.
- Replacement trees must be at least 1.8 m tall if coniferous or at least 6 cm in diameter if deciduous

Eleven (11) trees with a DBH over 50cm are being removed. Therefore twenty-two (22) replacement trees would be required

Twenty-five (25) trees with a DBH less than 49cm are being removed. Therefore twenty-five (25) replacement trees would be required.

A total of forty-seven (47) replacement trees would be required.

Tree locations would be such as not to interfere with underground or overhead utility lines. The trees are to be planted after the construction and landscaping work on the site have been completed. The trees would best be transplanted during the spring or autumn. Mid-summer transplanting should be avoided. These trees are to be maintained in good condition. Supplemental watering may be required during the drier periods of the year, especially during the first two or three years after their transplantation

4. Conclusions

In order to allow for the development at Wyndham St. & Main St. Thirty-six (36) trees over 15cm DBH would have to be removed.

Thirty-five (35) privately owned tree over 15 cm DBH would be removed.
Forty-five (45) replacement trees required.

One (1) road allowance tree over 15cm DBH would be removed.
Two (2) replacement trees required.

No (0) trees on neighbouring properties are at risk of injury or removal

All of the trees to be retained are to be protected by barriers during the demolition and construction work on the site.

MSLA Landscape Architects is developing a landscape plan & tree replacement plan for the Wyndham St. & Main St. property.

D. Andrew White M. Sc.



Existing Tree Schedule

No.	Tree Species	DBH (cm)	Location	CR (%)	TC	Comments
#1	white elm	36-39	SE Main St.	55	City	To be Preserved
#2	black locust	86	SE tag# 13	60	private	To be Removed
#3	black locust	8-12	SW coppice	70	City	To be Removed
#4	Manitoba maple	78	SW Main St.	55	City	To be Removed
#5	green ash	8-10	SW corner	70	City	To be Preserved
#5b	green ash	8-10	SW corner	70	City	To be Preserved
#6	sugar maple	34	SW Wyndham St.	65	private	To be Removed
#7	honey locust	35	SW Wyndham St.	65	private	To be Removed
#8	blue spruce	24	SW Wyndham St.	70	private	To be Removed
#9	white pine	71	W near house	65	private	To be Removed
#10	Norway maple	10	SW Main St.	70	City	To be Preserved
#11	juniper	24	W near house	65	private	To be Removed
#12	white mulberry	29-34	SW field tag# 5	65	private	To be Removed
#13	white cedar	28-34	SW field	60	private	To be Removed
#14	white cedar	36	SW field	65	private	To be Removed
#15	white cedar	29	SW field tag# 7	65	private	To be Removed
#16	white cedar	43-44	SW field tag# 8	60	private	To be Removed
#17	white spruce	28	SW side tag# 10	65	private	To be Removed
#18	white spruce	56	SW side tag# 11	65	private	To be Removed
#19	black locust	9-12	S side	70	private	To be Removed
#20	black locust	62	S side	65	private	To be Removed
#21	Norway maple	43	S side	65	private	To be Removed
#22	Manitoba maple	69	S side	70	private	To be Removed
#23	black walnut	52	E field tag# 18	65	private	To be Removed
#24	black locust	30-58	S side tag# 68	70	private	To be Removed
#25	Manitoba maple	46-48	SE side tag# 22	65	private	To be Removed
#26	Manitoba maple	39	SE side	65	private	To be Removed
#27	Manitoba maple	22	SE side	65	private	To be Removed
#28	Manitoba maple	20	SE side	65	private	To be Removed
#29	black locust	55	SE side tag #14	65	private	To be Removed
#30	black locust	42	SE side tag #13	65	private	To be Removed
#31	Manitoba maple	38-96	SE side	55	private	To be Removed
#32	sugar maple	52	SE side	60	private	To be Removed
#33	black walnut	15-18	SE corner	70	private	To be Preserved
#34	Manitoba maple	16-29	SE margin	65	private	To be Preserved
#35	Manitoba maple	29-44	SE margin	60	private	To be Preserved
#36	Manitoba maple	32-38	SE margin	60	private	To be Preserved
#37	Manitoba maple	39-54	SE margin	55	private	To be Preserved
#38	black walnut	45	E margin	65	private	To be Preserved
#39	Manitoba maple	59	E margin	60	private	To be Preserved
#40	Manitoba maple	19-22	E margin	55	private	To be Preserved
#41	black locust	39	N side tag# 47	65	private	To be Preserved

No.	Tree Species	DBH (cm)	Location	CR (%)	TC	Comments
#42	black locust	14	N side tag# 42	70	private	To be Preserved
#43	black locust	15	N side tag# 45	70	private	To be Preserved
#44	black locust	24	N side tag# 44	65	private	To be Preserved
#45	black walnut	18	N side tag# 41	70	private	To be Preserved
#46	black locust	29	N side tag# 48	70	private	To be Preserved
#47	black locust	44	NW side tag# 72	65	private	To be Removed
#48	black locust	39	NW side tag# 71	65	private	To be Removed
#49	black locust	39	NW side	65	private	To be Removed
#50	black locust	38	NW side	65	private	To be Removed
#51	black locust	34	NW side	65	private	To be Removed
#52	black locust	32-34	NW side tag# 75	65	private	To be Removed
#53	pear tree	18	NW corner	60	private	To be Removed
#54	black walnut	19	N side tag #49	70	private	To be Preserved
#55	black locust	28	N side tag #41	70	private	To be Preserved
#56	black locust	27	N side tag #50	70	private	To be Preserved
#57	black walnut	39	N side tag# 51	65	private	To be Preserved
#58	black locust	29	N side tag# 62	65	private	To be Preserved
#59	black locust	74	N side tag# 63	60	private	To be Preserved
#60	black locust	30	N side tag# 56	65	private	To be Preserved
#61	black locust	36-42	N side	60	private	To be Preserved
#62	black locust	88	N side tag# 65 ?	40	private	To be Preserved
#63	black locust	46	N side tag# 64	65	private	To be Preserved
#64	black locust	62-83	N side	55	private	To be Preserved
#65	black locust	48-64	NW side	60	private	To be Preserved
#66	black locust	72	NW side	55	private	To be Preserved
#67	black locust	52	NW side	60	private	To be Preserved
#68	Norway maple	16	NW side	70	private	To be Preserved
#69	black walnut	28	NW side tag# 85	65	private	To be Preserved
#70	black locust	36	NW side tag# 84	65	private	To be Preserved
#71	black walnut	28	E offsite	65	neighbour	To be Preserved
#72	sugar maple	64	E offsite	60	neighbour	To be Preserved
#73	black walnut	38	E offsite	65	neighbour	To be Preserved
#74	white elm	28	E offsite	60	neighbour	To be Preserved
#75	sugar maple	62	NE offsite	60	neighbour	To be Preserved
#76	sugar maple	82	NE offsite	55	neighbour	To be Preserved
#77	sugar maple	20	NE offsite	70	neighbour	To be Preserved
#78	green ash	30	NE offsite, dead	0	neighbour	To Remain
#79	black locust	58-62	N offsite	60	neighbour	To be Preserved
#80	Manitoba maple	42	N offsite	65	neighbour	To be Preserved
#81	basswood	56-62	NW offsite	55	neighbour	To be Preserved
#82	black locust	38-44	NE offsite	65	neighbour	To be Preserved

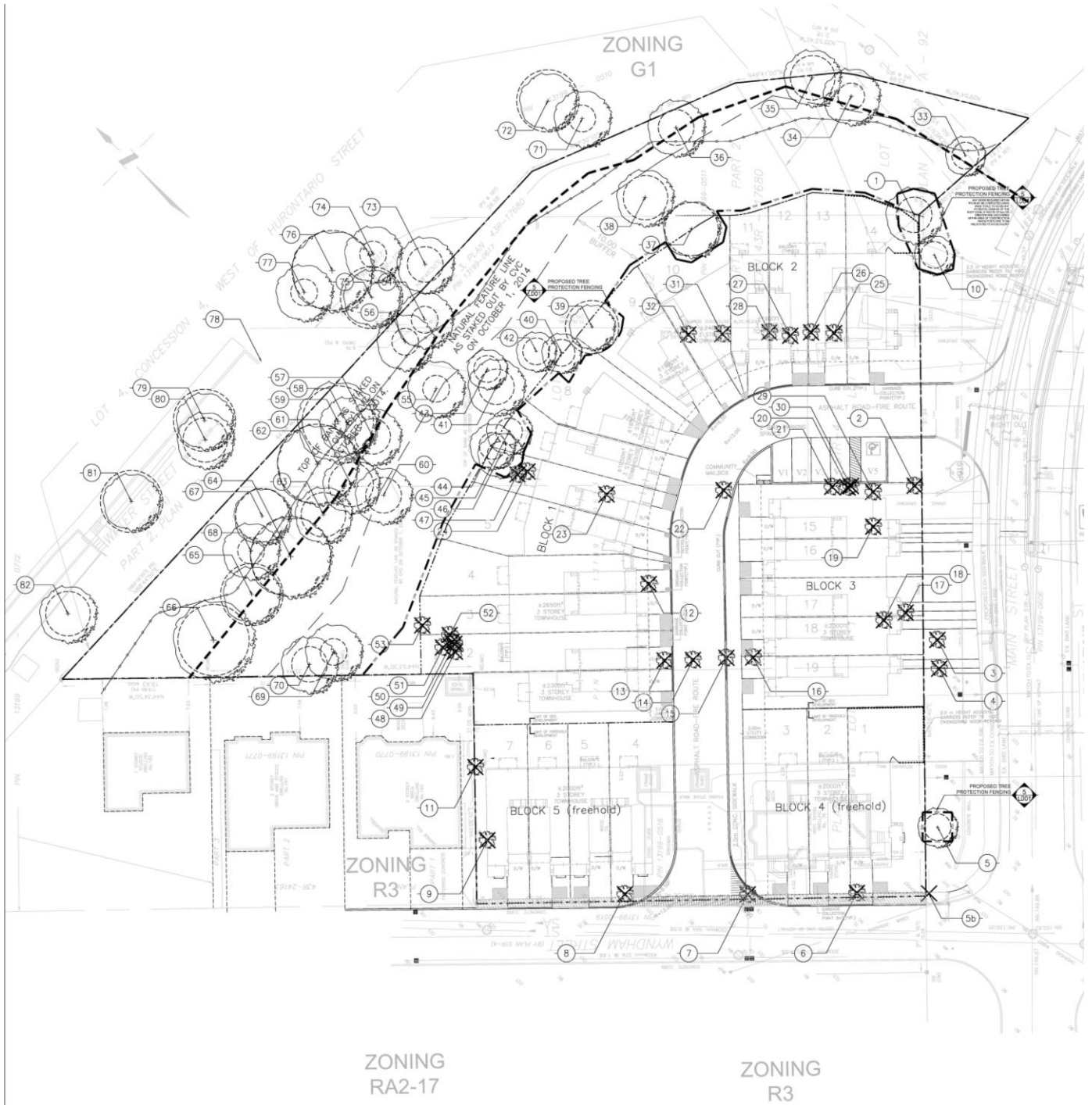


Figure #1: Tree locations on the Wyndham Street and Main Street junction development site

5. References

1- Council of Tree Landscape Appraisers. 2000. Guide for Plant Appraisal. 9th Edition. International Society of Arboriculture.

2- International Society of Arboriculture of Ontario. 1998. Ontario Supplement to Guide for Plant Appraisal 8th Edition. Ontario Chapter, International Society of Arboriculture.

3- City of Mississauga. 2001. THE TREE PERMIT BY-LAW NUMBER 474-05. Corporation of the City of Mississauga, ON.

4- City of Mississauga. 2017. Application to Permit the Injury or Destruction of Trees on Private Property. City of Mississauga Community Services Department.