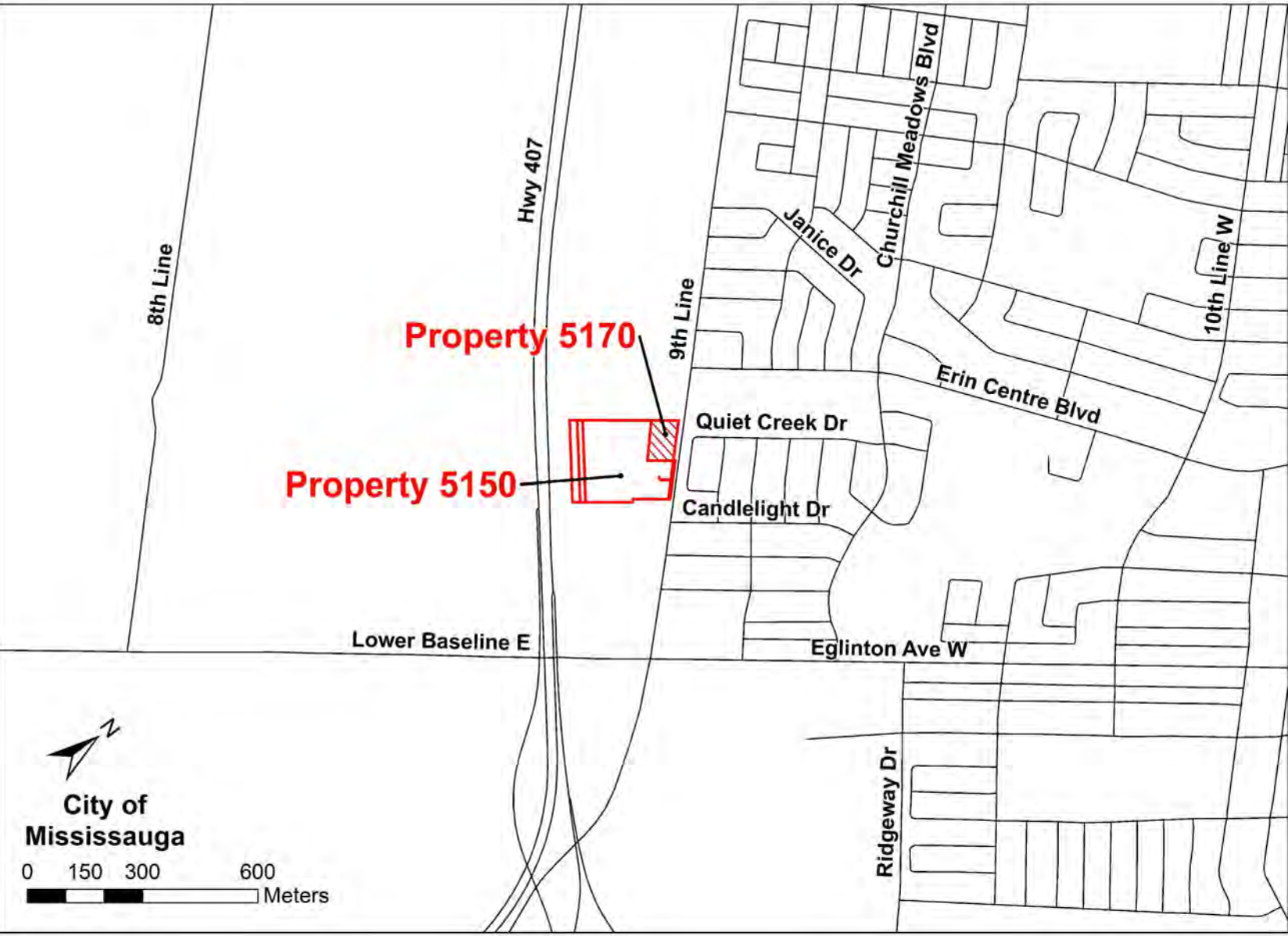


5150 Ninth Line Tree Management Plan Mattamy (Ninth Line) Ltd.

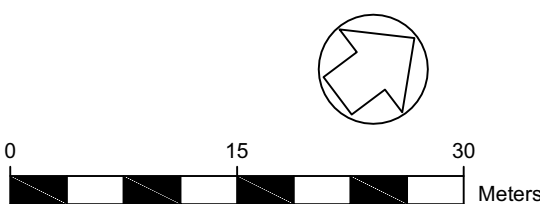
5150 Ninth Line, Mississauga



LEGEND

- | | | | |
|-----|--------------------------------|--|---|
| (B) | Boundary Tree | | Dripline and Tree Protection Zone |
| (M) | Municipal Tree | | Dripline - Removal |
| | Tree Identified for Protection | | Portion of Hedge Identified for Removal |
| | Tree Identified for Removal | | Tree Protection Fence |

- RECOMMENDATIONS:**
Trees outside of the subject lands shall be protected from the impacts of grading, manoeuvring of machinery, material laydown, and other construction related activities. The following recommendations are intended to isolate trees from the impacts of construction:
- Delineation of the disturbance limits within work areas should be clearly defined on construction drawings and on site prior to construction;
 - No trees shall be pruned or removed or impacted without prior approval from the City;
 - It is the responsibility of the project team to become directly acquainted with the site, to carefully examine the location of the proposed work, and to notify the City of any discrepancies in the site conditions;
 - The Site Supervisor shall be familiar with these recommendations and be cognizant of the purpose and function of Tree Protection Zones (TPZ);
 - Trees on neighbouring non-participating properties or on the property boundary shall be left in place until such time that the ownership is confirmed or upon written authorization for removal;
 - Tree protection hoarding/barrier shall be installed as detailed in Appendix B of this report and City specification, or a suitable alternative as approved by the City (i.e. Erosion and Sediment Control fence);
 - Tree protection hoarding/barrier must be erect prior to commencement of work;
 - Any area inside a TPZ must be left undisturbed (including overhead);
 - Heavy machinery is not to be operated within the TPZ (including overhead swinging of machine arms);
 - Construction materials or equipment are not to be stored within the TPZ or dripline of the trees;
 - No signs or objects should be displayed or affixed to any retained trees;
 - Disposal of any liquids shall not occur within the TPZ;
 - For project planning and scheduling purposes, removal of vegetation should occur:
 - outside of the bird nesting season to comply with the Migratory Birds Convention Act (MBCA), and the Fish and Wildlife Conservation Act (FWCA). Together, these Acts protect birds, nests, and eggs of regulated species (game birds, raptors, owls, migratory song birds). The nesting season is generally considered to be late March to late August (<https://www.ec.gc.ca>); and,
 - outside of the bat summer roosting period considered April 1-September 30 to avoid impacts to bats protected by the FWCA and the Endangered Species Act;
 - Vegetation removals are preferred during November to March to minimize impacts on wildlife;
 - This report is intended to satisfy the municipal requirements for arborist reports and tree removals only. The proponent should be aware that additional studies may be required in relation to natural heritage significance;
 - Should any additional, incidental or accidental tree injuries occur during construction, a qualified professional should be consulted to determine if additional mitigation measures should be employed; and,
 - Ash tree removals are subject to CFIA Regulation D-03-08, which details the phytosanitary requirements to prevent the entry into, and spread of the Emerald Ash Borer (EAB), *Agrilus planipennis* Fairmaire. The tree removal contractor shall comply with the conditions set by D-03-08 when conducting Ash tree removal.



Concept Plan vers: Sep 25, 2020

Project: TA8851-01

Figure: 3

Scale: 1:500

Prepared by: KC

Verified by: MJO

Date: Oct 1, 2020

HIGHWAY 407

±12m TRANSIT CORRIDOR

14m MTO SETBACK

CEC ROAD "D"

FUTURE COMMUNITY CENTRE & PARK TO NORTH

WOODLOT

10m BUFFER

LANDSCAPE BUFFER (2.8m)

CEC ROAD "E"

5170 Ninth Line

0.3m Reserve

Written authorization from owner and City to be obtained prior to removal of boundary trees.

5160 Ninth Line

5150 Ninth Line

AMENITY

736m

CEC ROAD "A"

CEC ROAD "B"

CEC ROAD "C"

CEC ROAD "D"

CEC ROAD "E"

CEC ROAD "F"

CEC ROAD "G"

CEC ROAD "H"

CEC ROAD "I"

CEC ROAD "J"

CEC ROAD "K"

CEC ROAD "L"

CEC ROAD "M"

CEC ROAD "N"

CEC ROAD "O"

CEC ROAD "P"

CEC ROAD "Q"

CEC ROAD "R"

CEC ROAD "S"

CEC ROAD "T"

CEC ROAD "U"

CEC ROAD "V"

CEC ROAD "W"

CEC ROAD "X"

CEC ROAD "Y"

CEC ROAD "Z"

CEC ROAD "AA"

CEC ROAD "AB"

CEC ROAD "AC"

CEC ROAD "AD"

CEC ROAD "AE"

CEC ROAD "AF"

CEC ROAD "AG"

CEC ROAD "AH"

CEC ROAD "AI"

CEC ROAD "AJ"

CEC ROAD "AK"

CEC ROAD "AL"

CEC ROAD "AM"

CEC ROAD "AN"

CEC ROAD "AO"

CEC ROAD "AP"

CEC ROAD "AQ"

CEC ROAD "AR"

CEC ROAD "AS"

CEC ROAD "AT"

CEC ROAD "AU"

CEC ROAD "AV"

CEC ROAD "AW"

CEC ROAD "AX"

CEC ROAD "AY"

CEC ROAD "AZ"

CEC ROAD "BA"

CEC ROAD "BB"

CEC ROAD "BC"

CEC ROAD "BD"

CEC ROAD "BE"

CEC ROAD "BF"

CEC ROAD "BG"

CEC ROAD "BH"

CEC ROAD "BI"

CEC ROAD "BJ"

CEC ROAD "BK"

CEC ROAD "BL"

CEC ROAD "BM"

CEC ROAD "BN"

CEC ROAD "BO"

CEC ROAD "BP"

CEC ROAD "BQ"

CEC ROAD "BR"

CEC ROAD "BS"

CEC ROAD "BT"

CEC ROAD "BU"

CEC ROAD "BV"

CEC ROAD "BW"

CEC ROAD "BX"

CEC ROAD "BY"

CEC ROAD "BZ"

CEC ROAD "CA"

CEC ROAD "CB"

CEC ROAD "CC"

CEC ROAD "CD"

CEC ROAD "CE"

CEC ROAD "CF"

CEC ROAD "CG"

CEC ROAD "CH"

CEC ROAD "CI"

CEC ROAD "CJ"

CEC ROAD "CK"

CEC ROAD "CL"

CEC ROAD "CM"

CEC ROAD "CN"

CEC ROAD "CO"

CEC ROAD "CP"

CEC ROAD "CQ"

CEC ROAD "CR"

CEC ROAD "CS"

CEC ROAD "CT"

CEC ROAD "CU"

CEC ROAD "CV"

CEC ROAD "CW"

CEC ROAD "CX"

CEC ROAD "CY"

CEC ROAD "CZ"

CEC ROAD "DA"

CEC ROAD "DB"

CEC ROAD "DC"

CEC ROAD "DD"

CEC ROAD "DE"

CEC ROAD "DF"

CEC ROAD "DG"

CEC ROAD "DH"

CEC ROAD "DI"

CEC ROAD "DJ"

CEC ROAD "DK"

CEC ROAD "DL"

CEC ROAD "DM"

CEC ROAD "DN"

CEC ROAD "DO"

CEC ROAD "DP"

CEC ROAD "DQ"

CEC ROAD "DR"

CEC ROAD "DS"

CEC ROAD "DT"

CEC ROAD "DU"

CEC ROAD "DV"

CEC ROAD "DW"

CEC ROAD "DX"

CEC ROAD "DY"

CEC ROAD "DZ"

CEC ROAD "EA"

CEC ROAD "EB"

CEC ROAD "EC"

CEC ROAD "ED"

CEC ROAD "EE"

CEC ROAD "EF"

CEC ROAD "EG"

CEC ROAD "EH"

CEC ROAD "EI"

CEC ROAD "EJ"

CEC ROAD "EK"

CEC ROAD "EL"

CEC ROAD "EM"

CEC ROAD "EN"

CEC ROAD "EO"

CEC ROAD "EP"

CEC ROAD "EQ"

CEC ROAD "ER"

CEC ROAD "ES"

CEC ROAD "ET"

CEC ROAD "EU"

CEC ROAD "EV"

CEC ROAD "EW"

CEC ROAD "EX"

CEC ROAD "EY"

CEC ROAD "EZ"

CEC ROAD "FA"

CEC ROAD "FB"

CEC ROAD "FC"

CEC ROAD "FD"

CEC ROAD "FE"

CEC ROAD "FF"

CEC ROAD "FG"

CEC ROAD "FH"

CEC ROAD "FI"

CEC ROAD "FJ"

CEC ROAD "FK"

CEC ROAD "FL"

CEC ROAD "FM"

CEC ROAD "FN"

CEC ROAD "FO"

CEC ROAD "FP"

CEC ROAD "FQ"

CEC ROAD "FR"

CEC ROAD "FS"

CEC ROAD "FT"

CEC ROAD "FU"

CEC ROAD "FV"

CEC ROAD "FW"

CEC ROAD "FX"

CEC ROAD "FY"

CEC ROAD "FZ"

CEC ROAD "GA"

CEC ROAD "GB"

CEC ROAD "GC"

CEC ROAD "GD"

CEC ROAD "GE"

CEC ROAD "GF"

CEC ROAD "GG"

CEC ROAD "GH"

CEC ROAD "GI"

CEC ROAD "GJ"

CEC ROAD "GK"

CEC ROAD "GL"

CEC ROAD "GM"

CEC ROAD "GN"

CEC ROAD "GO"

CEC ROAD "GP"

CEC ROAD "GQ"

CEC ROAD "GR"

CEC ROAD "GS"

CEC ROAD "GT"

CEC ROAD "GU"

CEC ROAD "GV"

CEC ROAD "GW"

CEC ROAD "GX"

CEC ROAD "GY"

CEC ROAD "GZ"

CEC ROAD "HA"

CEC ROAD "HB"

CEC ROAD "HC"

CEC ROAD "HD"

CEC ROAD "HE"

CEC ROAD "HF"

CEC ROAD "HG"

CEC ROAD "HH"

CEC ROAD "HI"

CEC ROAD "HJ"

CEC ROAD "HK"

CEC ROAD "HL"

CEC ROAD "HM"

CEC ROAD "HN"

CEC ROAD "HO"

CEC ROAD "HP"

CEC ROAD "HQ"

CEC ROAD "HR"

CEC ROAD "HS"

CEC ROAD "HT"

CEC ROAD "HU"

CEC ROAD "HV"

CEC ROAD "HW"

CEC ROAD "HX"

CEC ROAD "HY"

CEC ROAD "HZ"

CEC ROAD "IA"

CEC ROAD "IB"

CEC ROAD "IC"

CEC ROAD "ID"

CEC ROAD "IE"

CEC ROAD "IF"

CEC ROAD "IG"

CEC ROAD "IH"

CEC ROAD "II"

CEC ROAD "IJ"

CEC ROAD "IK"

CEC ROAD "IL"

CEC ROAD "IM"

CEC ROAD "IN"

CEC ROAD "IO"

CEC ROAD "IP"

CEC ROAD "IQ"

CEC ROAD "IR"

CEC ROAD "IS"