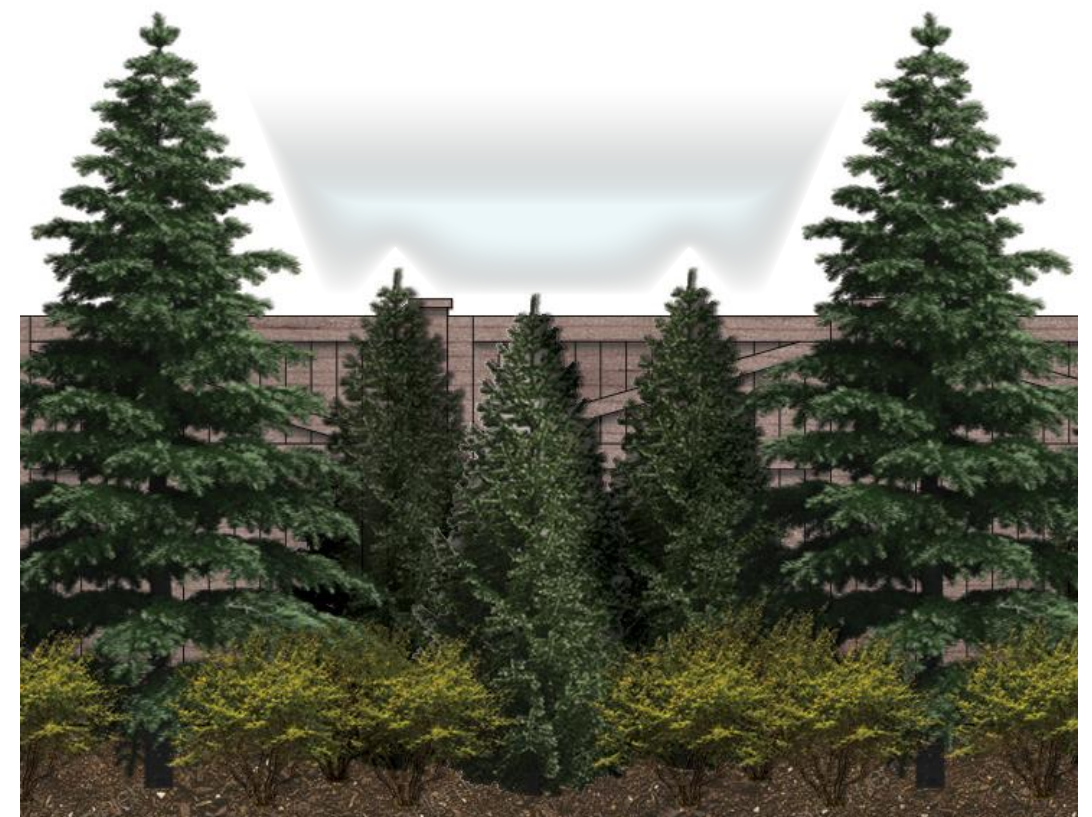


"A 3.1m high noise barrier is required along the side property line (East Unit) flanking onto Ninth Line and returned along the rear property line (2 Easterly Units). Figure 2 (p.14 of the *Preliminary Environmental Noise Assessment*) shows the extent and height of the noise barriers. Therefore, a buffer would be required to accommodate an approximately 0.7m high berm and retaining wall at the side for the lot flanking onto Ninth Line and a retaining wall at the rear property line as shown on the preliminary grading plan prepared by Urbantech dated April 2020. The exact noise barrier heights can be determined once final plan and grading information are available." *Preliminary Environmental Noise Assessment, May 2020, p. 9*

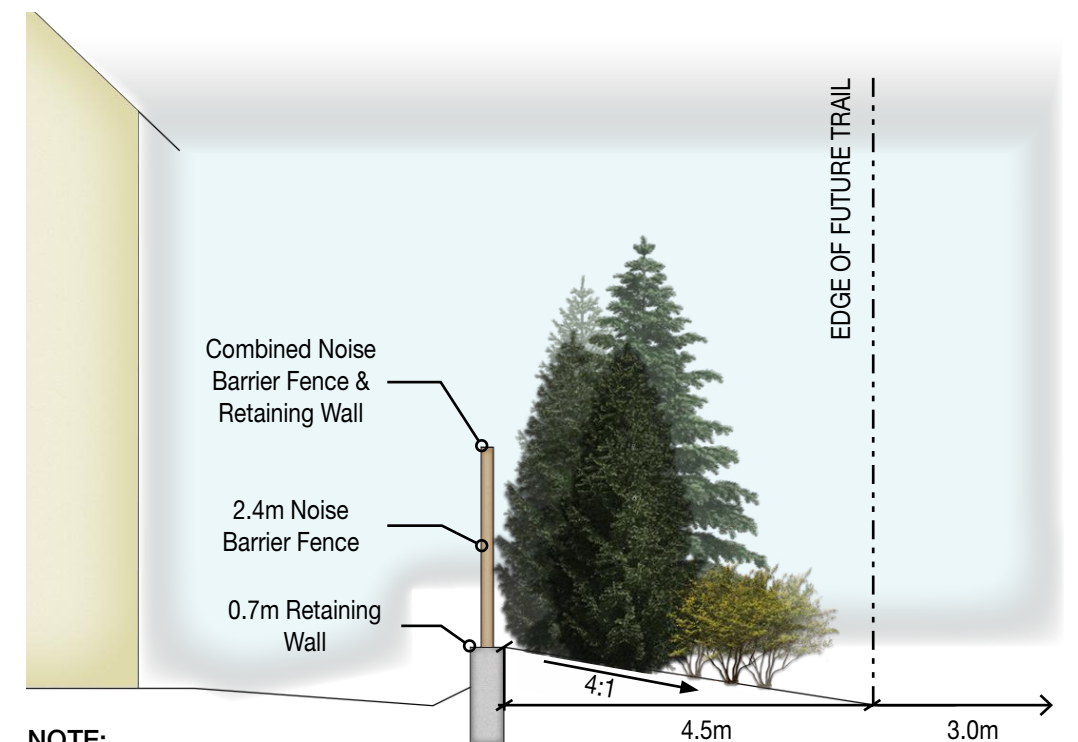
Potential Plant Species



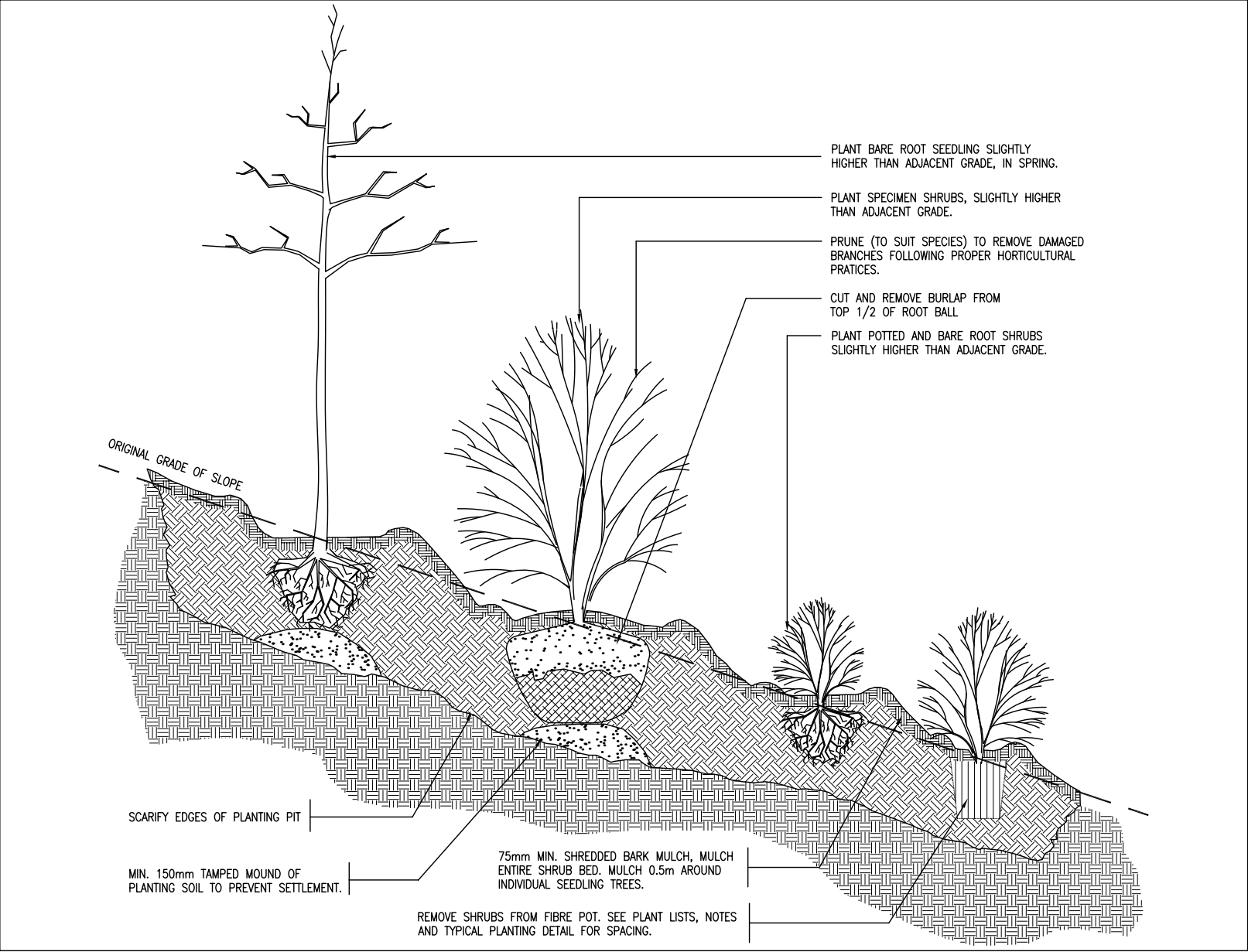
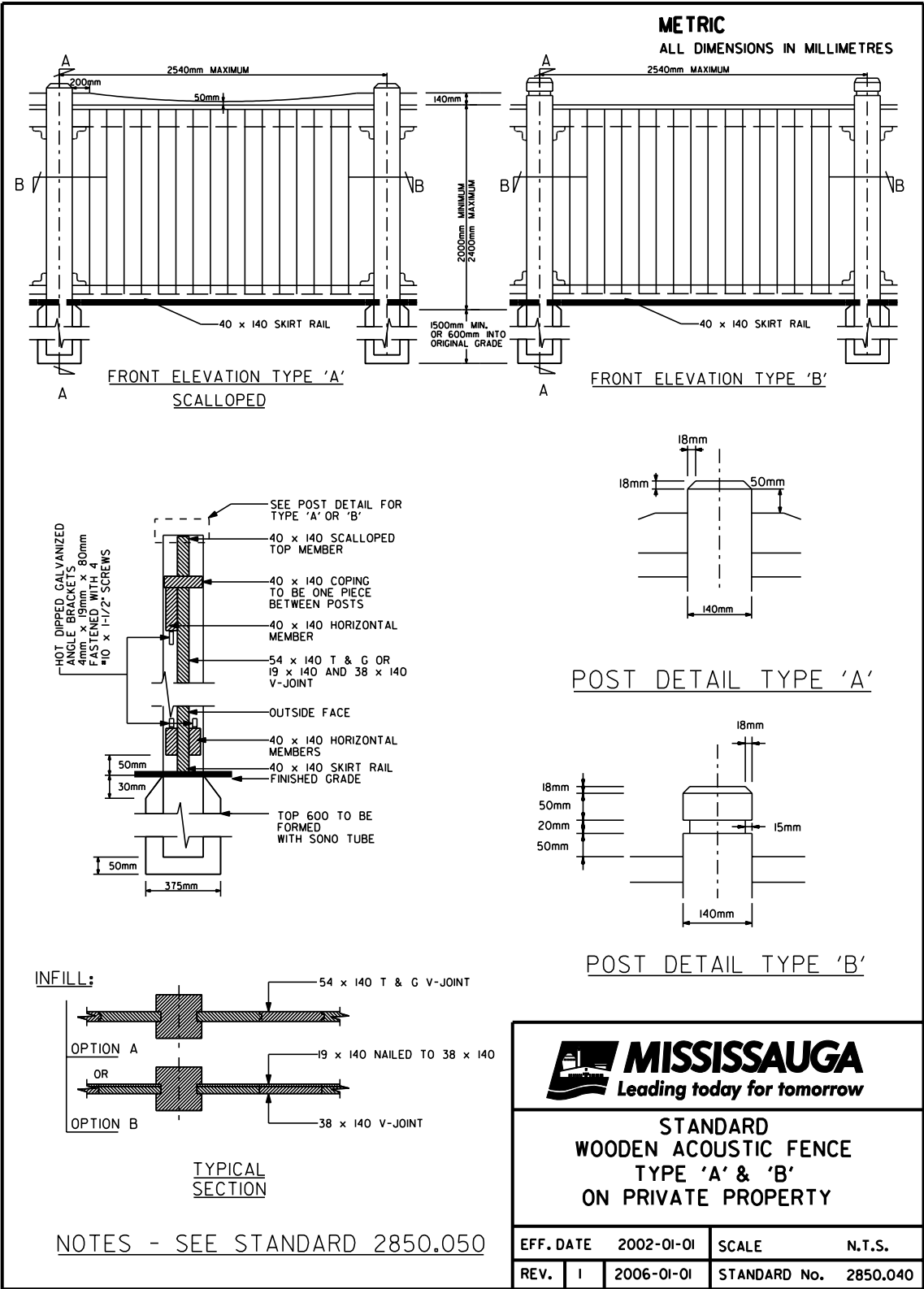
Noise Barrier Fence Conceptual Landscape Elevation



Combined Noise Barrier Fence & Retaining Wall with Landscape Berm Cross-Section (Derived from Preliminary Environmental Noise Assessment)



NOTE:
Drawing is conceptual in nature, subject to revisions in detailed design stage.



Planting on Slope Details